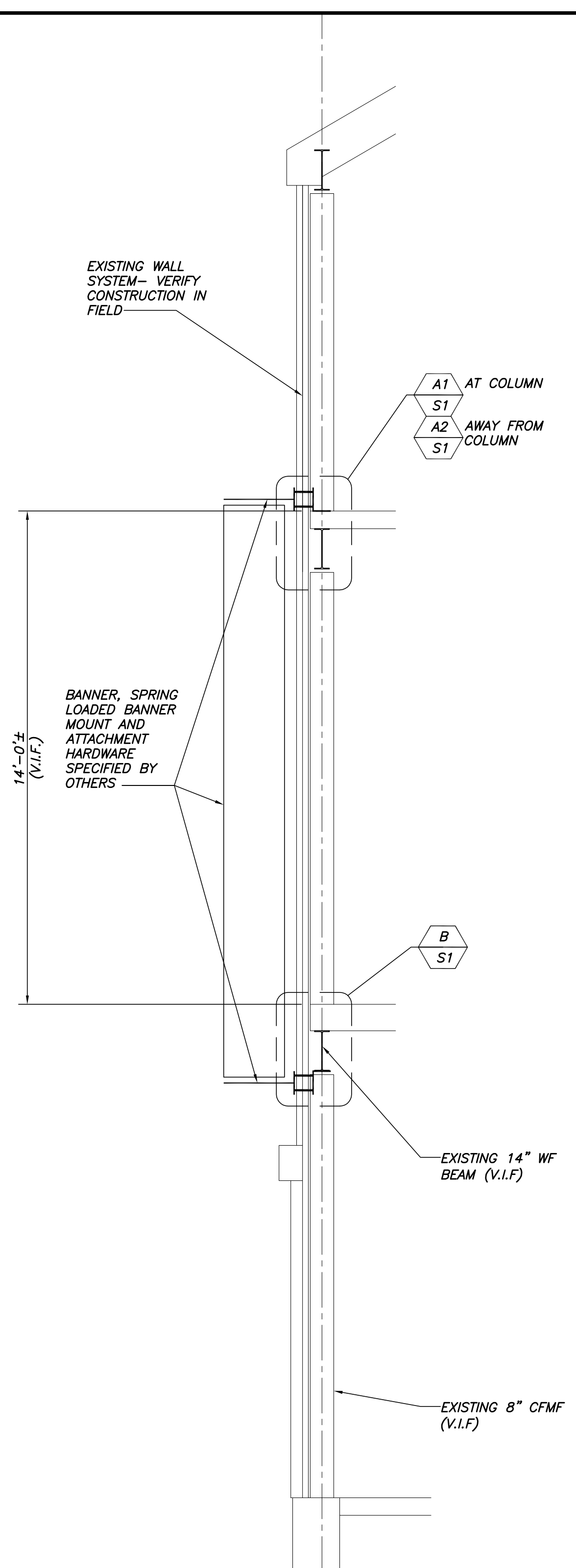


**GENERAL NOTES**

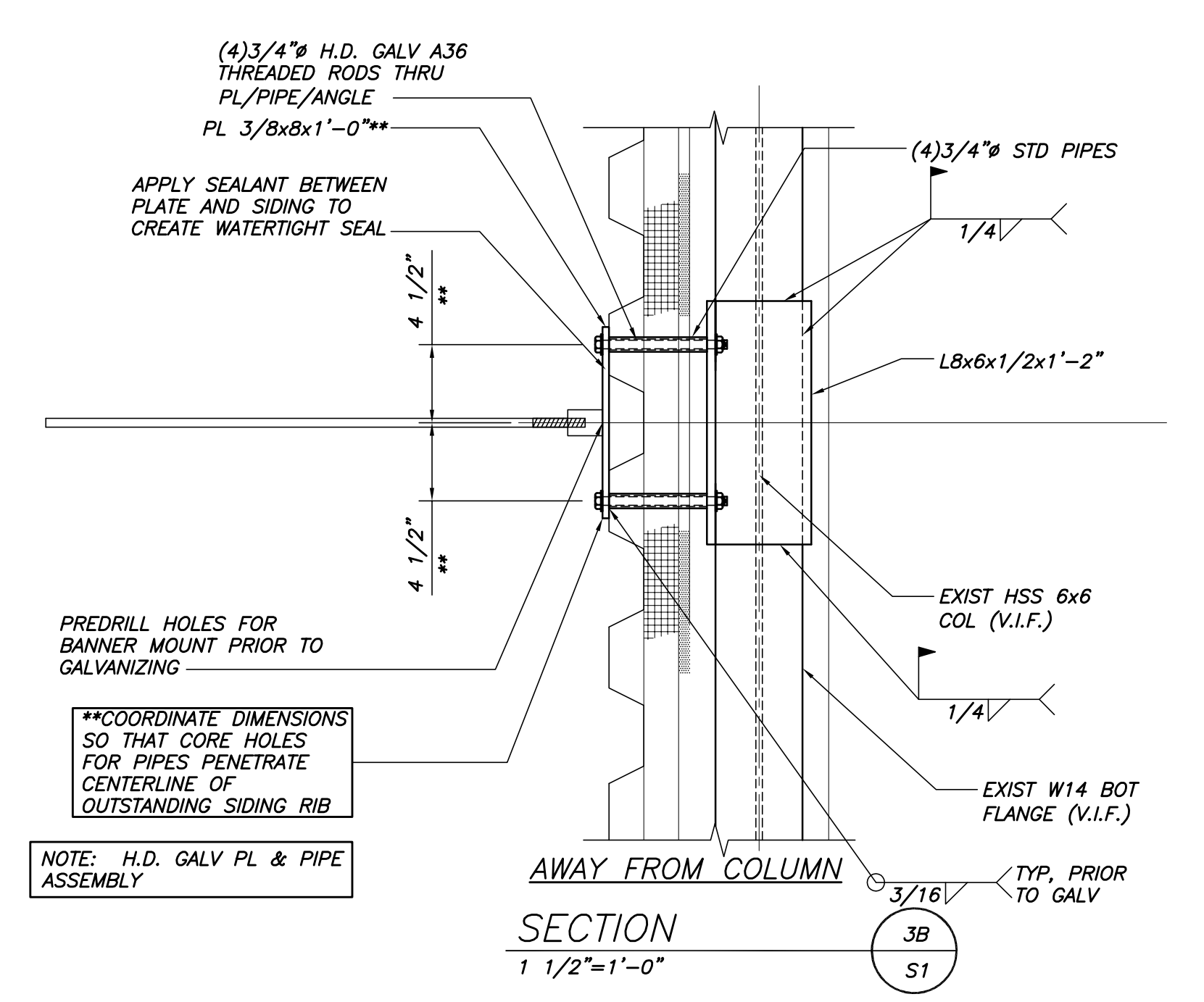
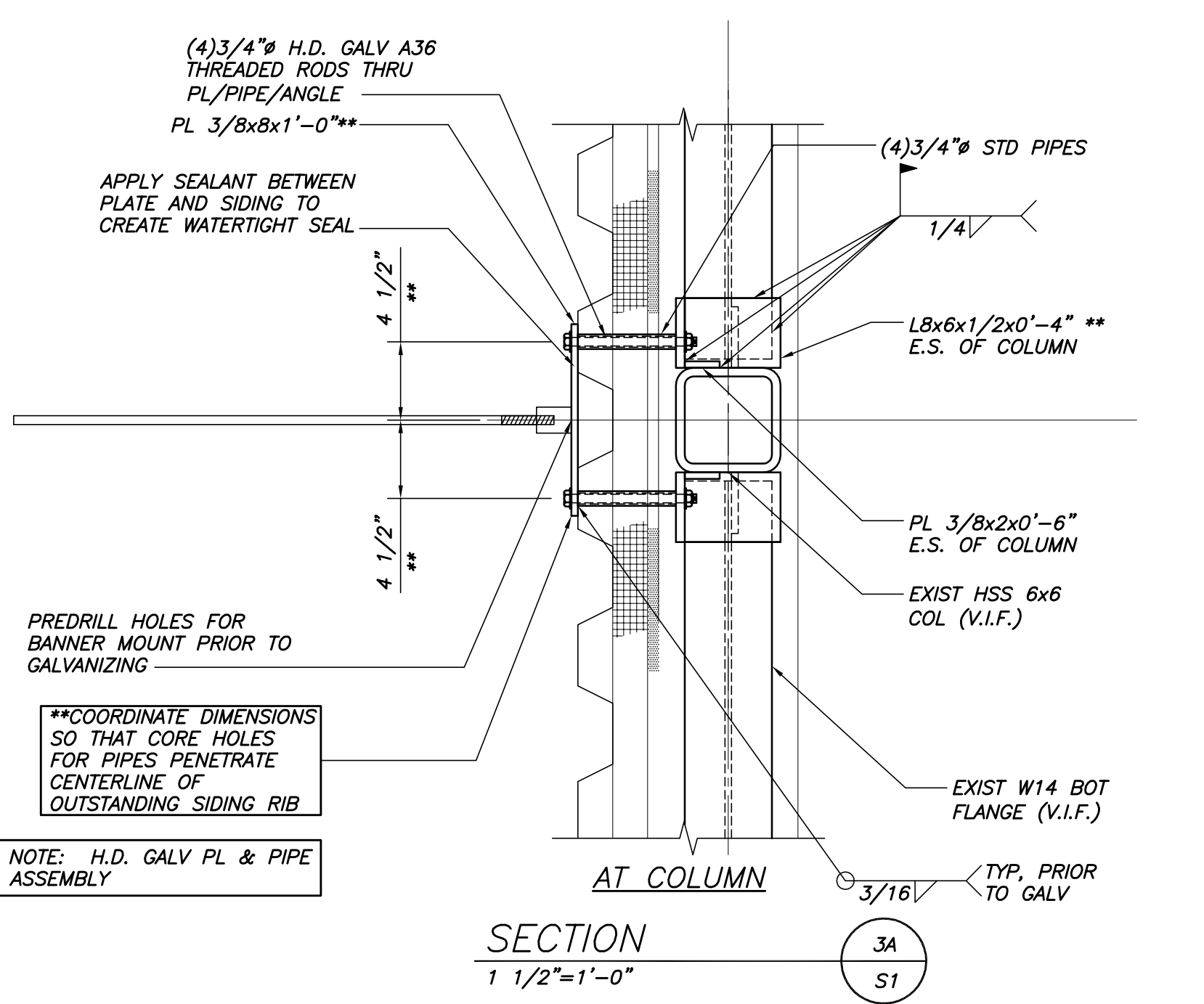
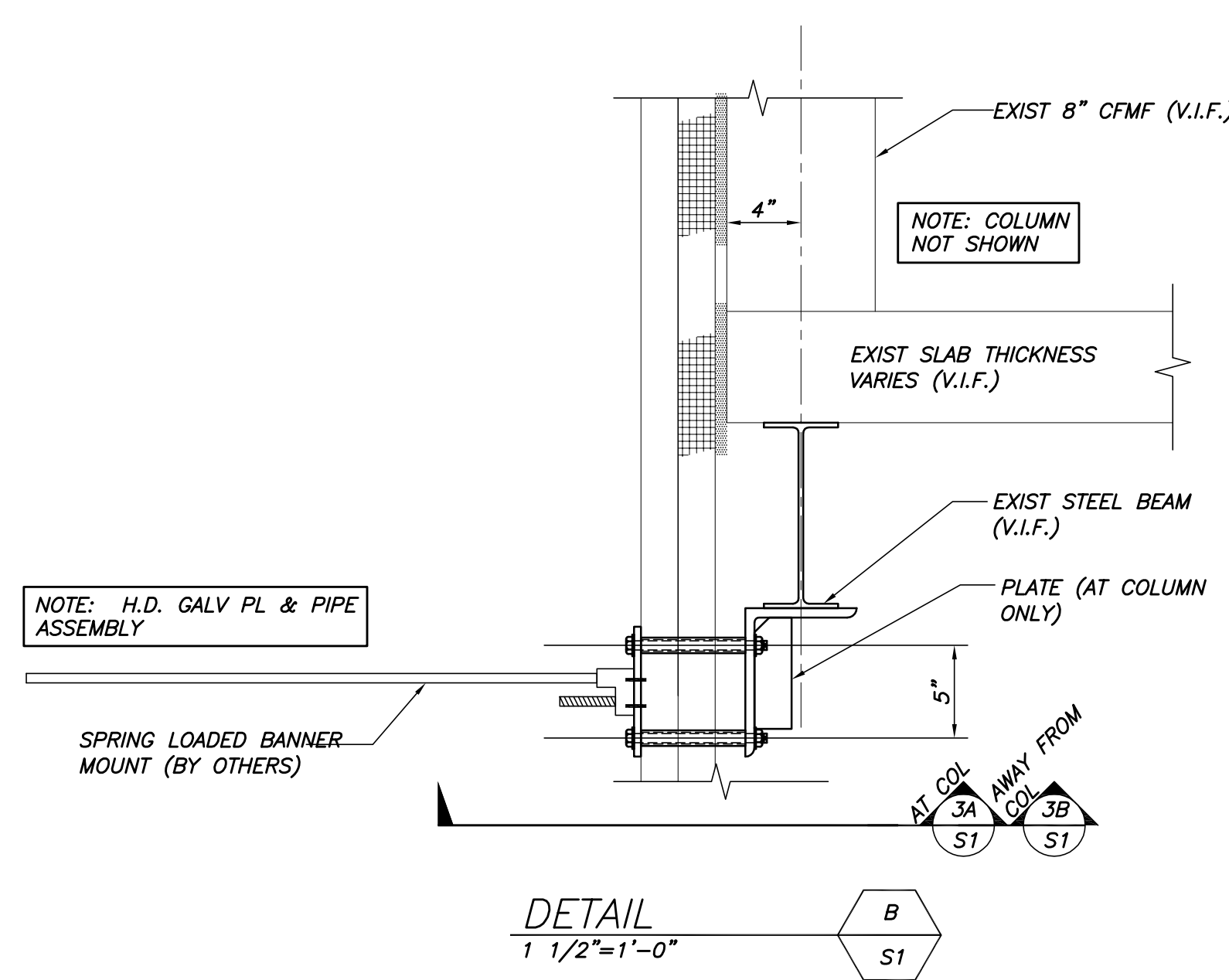
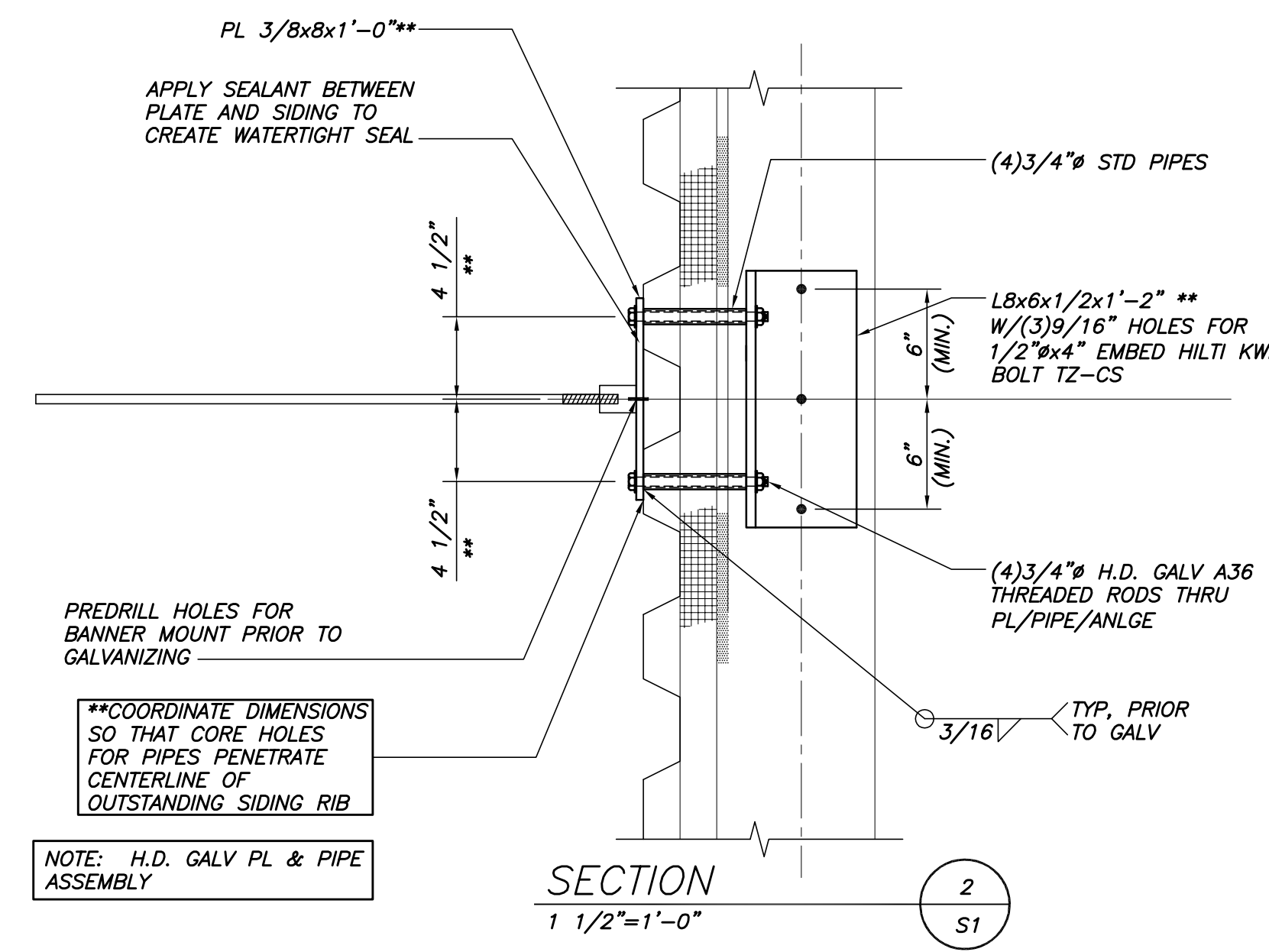
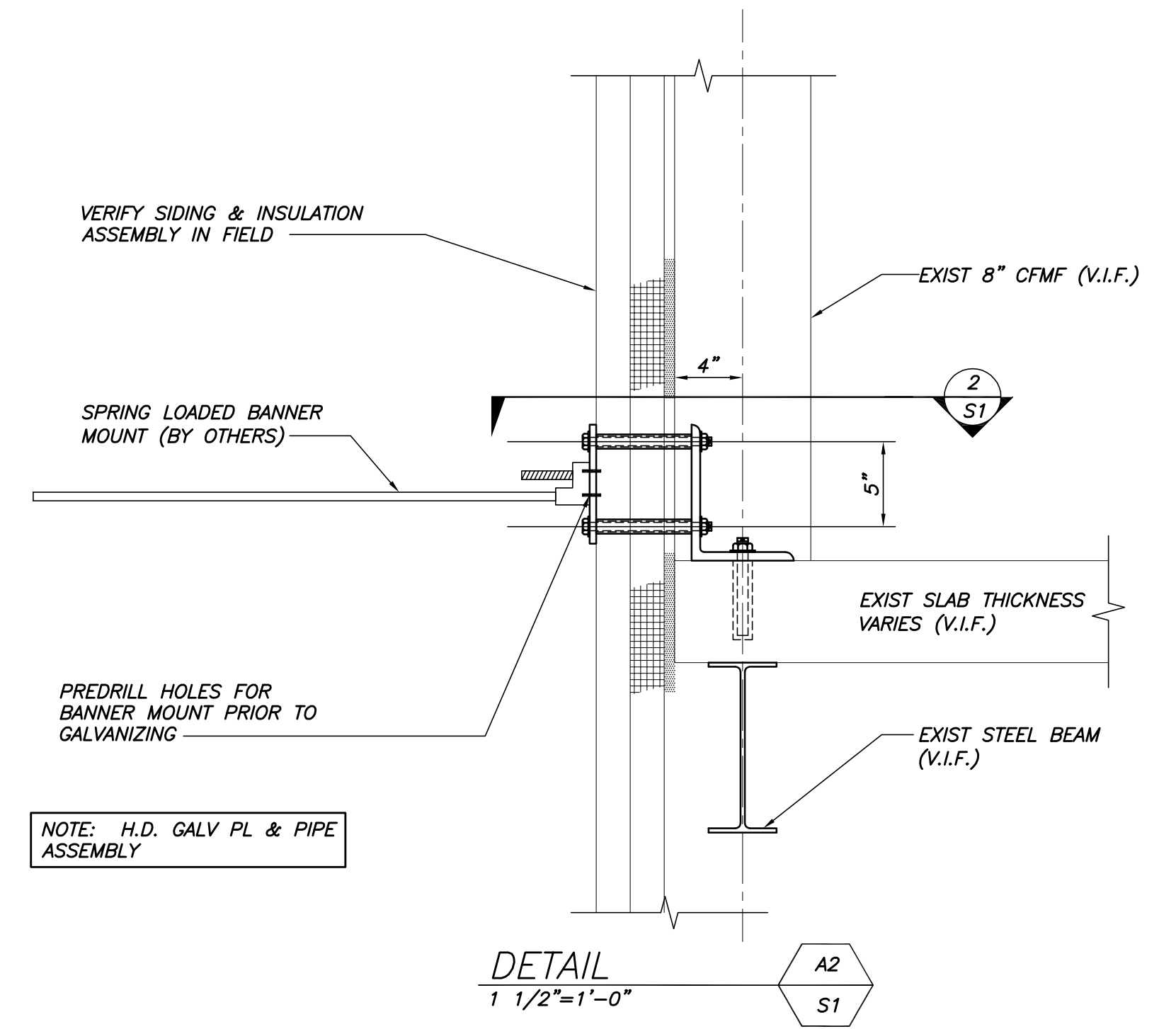
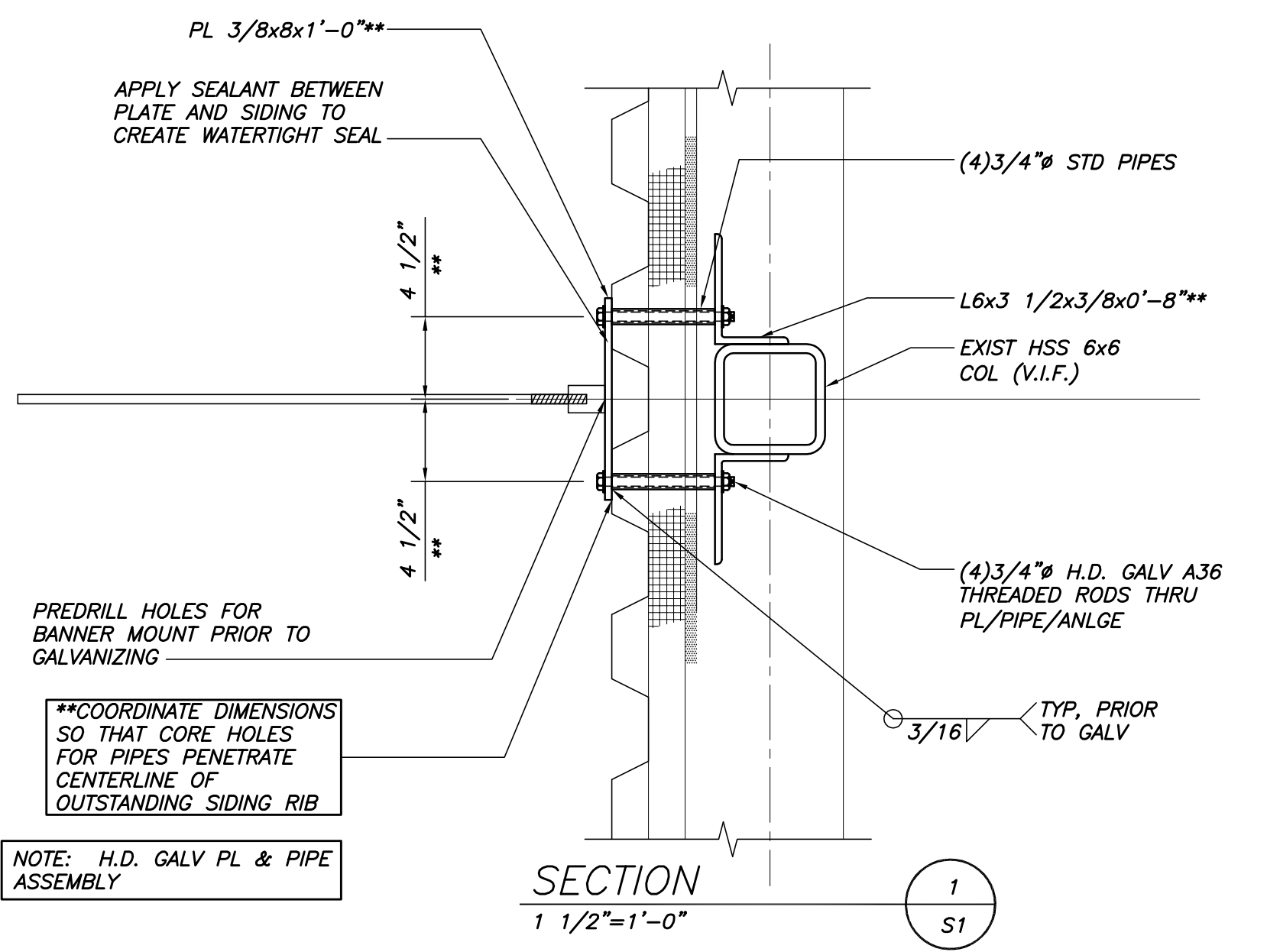
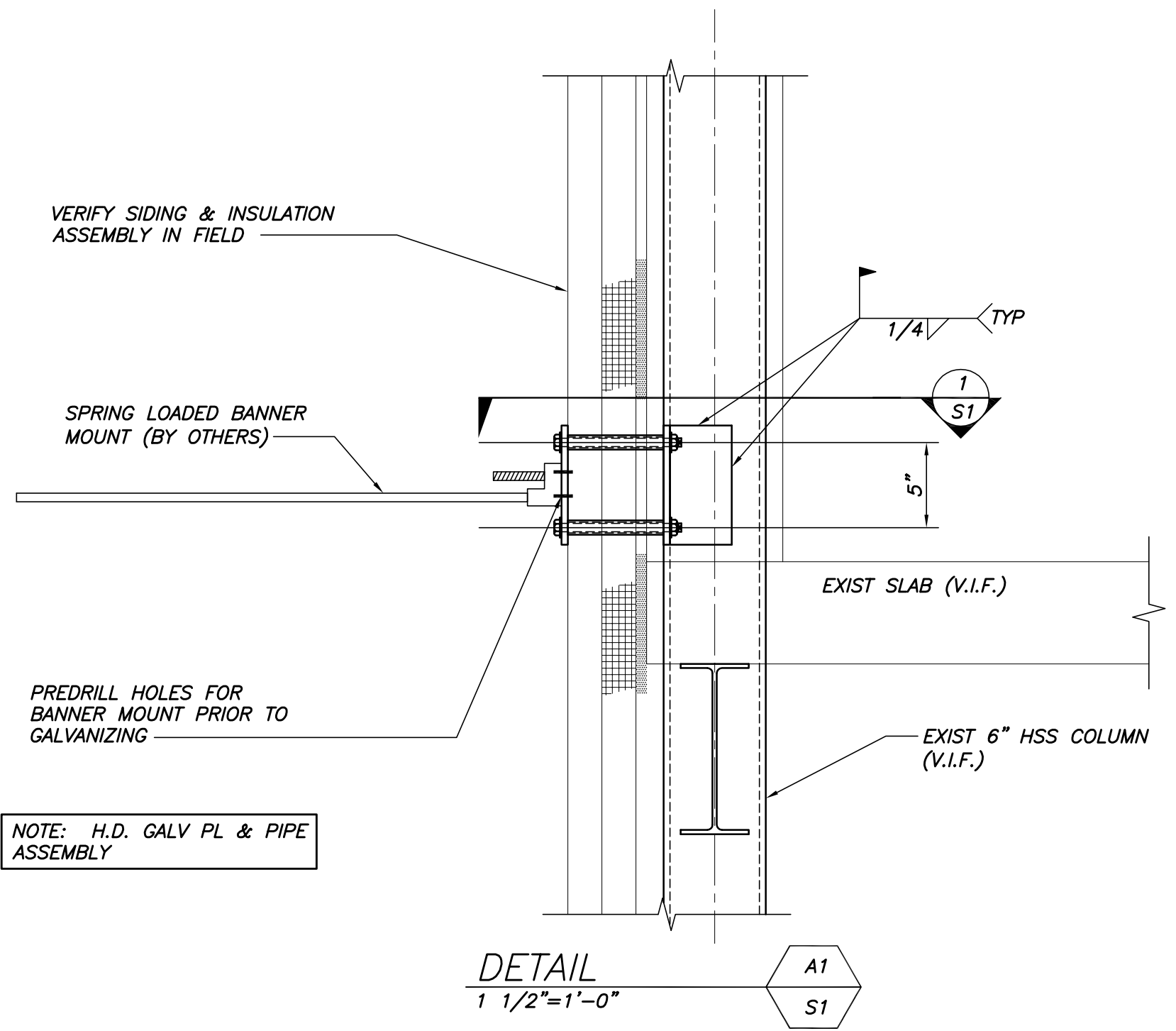
- THE FOLLOWING NOTES ARE INTENDED TO BE USED AS OUTLINED SPECIFICATIONS FOR THIS PROJECT. THE REFERENCED STANDARDS ARE CONSIDERED TO BE PART OF THE WORK.
- STRUCTURAL DRAWINGS SHALL BE USED IN CONJUNCTION WITH ARCHITECTURAL AND BANNER DRAWINGS. CONSULT THESE DRAWINGS FOR DIMENSIONS AND OTHER INFORMATION NOT PROVIDED.
- ALL DIMENSIONS AND CONDITIONS MUST BE VERIFIED IN THE FIELD. ANY DISCREPANCIES SHALL BE BROUGHT TO THE ATTENTION OF THE ARCHITECT BEFORE PROCEEDING WITH THE AFFECTED PART OF THE WORK.
- SECTIONS AND DETAILS SHOWN ON ANY STRUCTURAL DRAWINGS SHALL BE CONSIDERED TYPICAL FOR SIMILAR CONDITIONS AS DETERMINED BY THE ENGINEER.
- ALL APPLICABLE FEDERAL, STATE, AND MUNICIPAL REGULATIONS SHALL BE FOLLOWED, INCLUDING THE FEDERAL DEPARTMENT OF LABOR OCCUPATIONAL SAFETY AND HEALTH ACT (OSHA).

**STEEL NOTES**

- STRUCTURAL STEEL FABRICATION, ERECTION, AND CONNECTION DESIGN SHALL CONFORM TO AISC "SPECIFICATION FOR THE DESIGN FABRICATIONS, AND ERECTION OF STRUCTURAL STEEL" 13TH EDITION, AND THE "CODE OF STANDARD PRACTICE", LATEST EDITION.
- STRUCTURAL STEEL: STEEL PLATES, SHAPES, AND BARS, SHALL CONFORM TO ASTM A36 UNLESS NOTED OTHERWISE (U.N.O.).
- STRUCTURAL PIPE: CONFORM TO ASTM A53 TYPE E,  $F_y = 35$  KSI.
- WHERE WELDING IS INDICATED, ALL WELDING SHALL CONFORM TO AWS D1.1—LATEST EDITION. ELECTRODES SHALL CONFORM TO AWS A5.1 E70XX SERIES WITH PROPER ROD TO PRODUCE OPTIMUM WELD (LOW HYDROGEN).
- DESIGN AND DETAIL ALL CONNECTIONS ACCORDING TO AISC STANDARD CONNECTION TABLES. DESIGN STANDARD BEAM CONNECTIONS FOR THE MAXIMUM LOAD CAPACITY OF THE MEMBER. BRACING CONNECTIONS HAVE BEEN DETAILED ON THE DRAWINGS.
- STEEL BRACKET PLATE AND PIPE ASSEMBLY SHALL BE PREFABRICATED AND HOT DIPPED GALVANIZED. THREADED RODS EXTENDING THROUGH BUILDING ENVELOPE, AND CORRESPONDING NUTS AND WASHERS SHALL BE HOT DIPPED GALVANIZED. STEEL ANGLE INSIDE BUILDING ENVELOPE SHALL BE BARE STEEL.
- INSTALL ADHESIVE ANCHORS PER MANUFACTURER'S INSTRUCTIONS.



**TYPICAL WALL SECTION**  
NOT TO SCALE



THIS DRAWING IS AN INSTRUMENT OF SERVICE AND SHALL REMAIN THE PROPERTY OF BECKER STRUCTURAL ENGINEERS INC. IT SHALL NOT BE REPRODUCED, COPIED, LENT OR DEPOSED OF DIRECTLY OR INDIRECTLY FOR ANY PURPOSE OTHER THAN FOR WHICH IT IS SPECIFICALLY FURNISHED AND MUST BE RETURNED TO BECKER STRUCTURAL ENGINEERS INC. ON COMPLETION OF WORK, IF REQUESTED.

Approved	
Issued For	
Date	
Rev No	

Designed	Scale
EAR	NOTED
Drawn	Date
MK	10/25/13
Checked	Becker Job Number
PBB	3123