

NOTE: TANK ARRANGEMENT IS SHOWN FOR INFORMATION ONLY. CONTRACTOR TO FIELD VERIFY ORIENTATION WITH CLIENT FIELD REPRESENTATIVE AND REFER TO TANK AND PIPING PLAN FOR SITE ORIENTATION. CONCRETE CROWNING REQUIRED AT ALL MANHOLES. SLOPE CONCRETE AWAY FROM ALL MANHOLE COVERS TO AVOID ACCUMULATION OF WATER. SEE DETAIL 001 ON GCM10 FOR TYPICAL CROWNING.

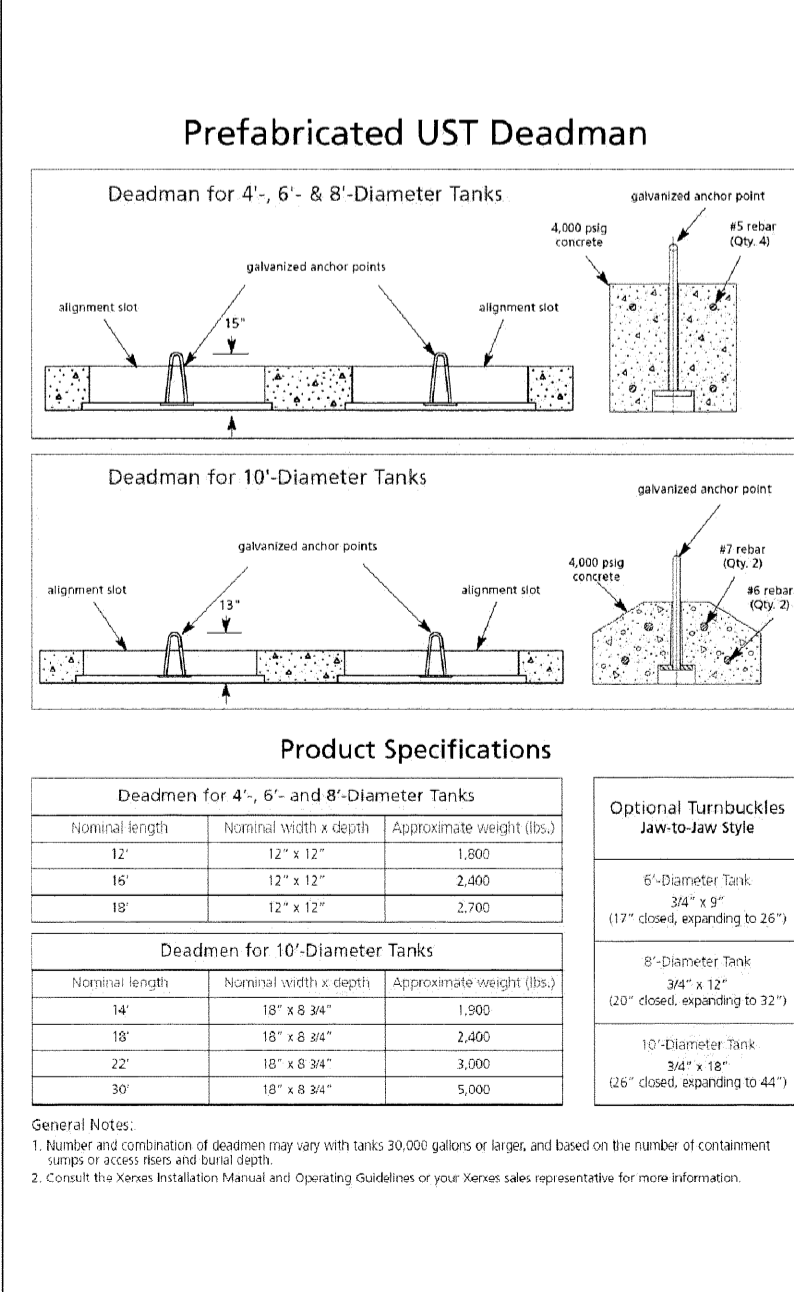
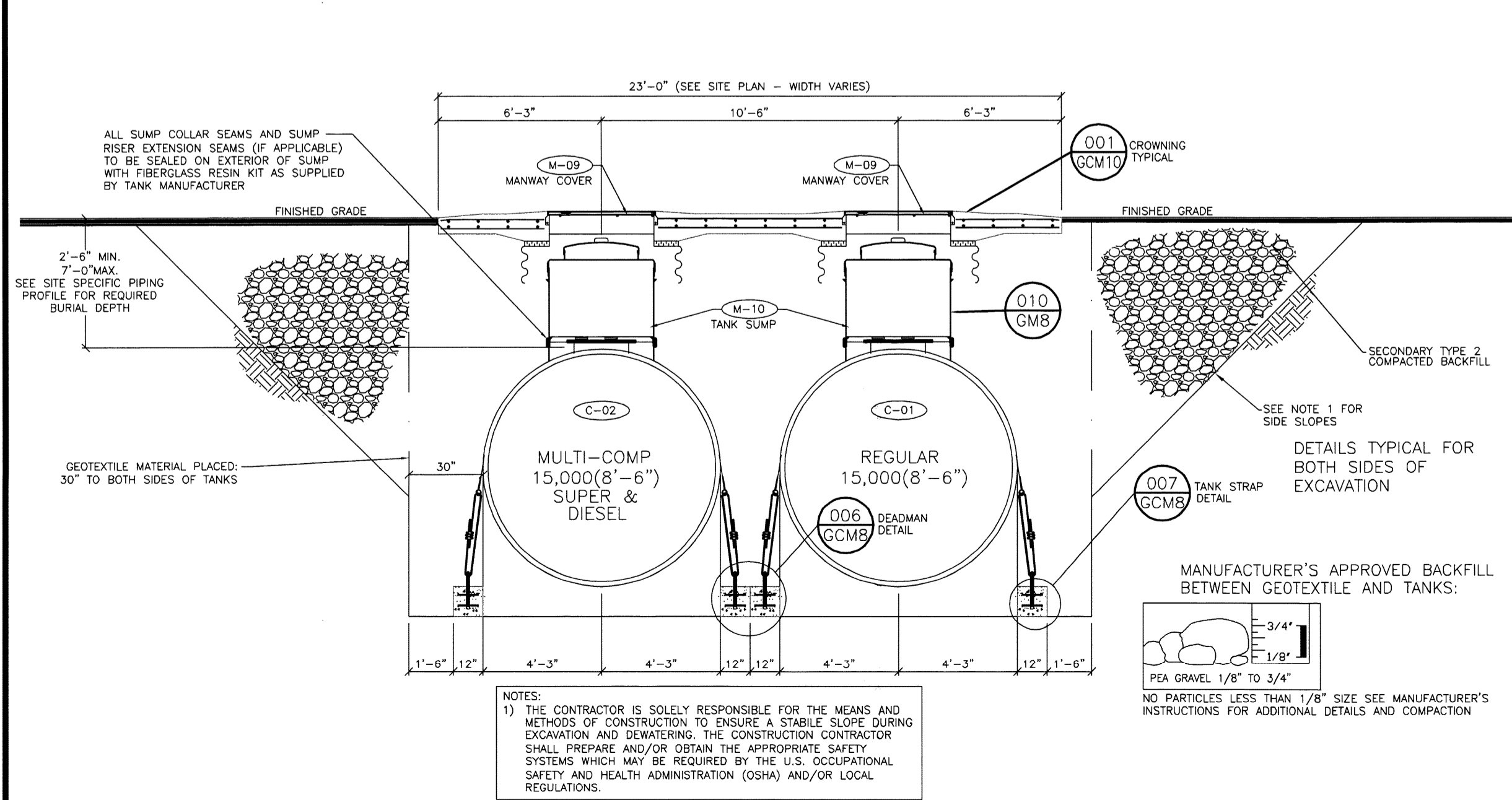
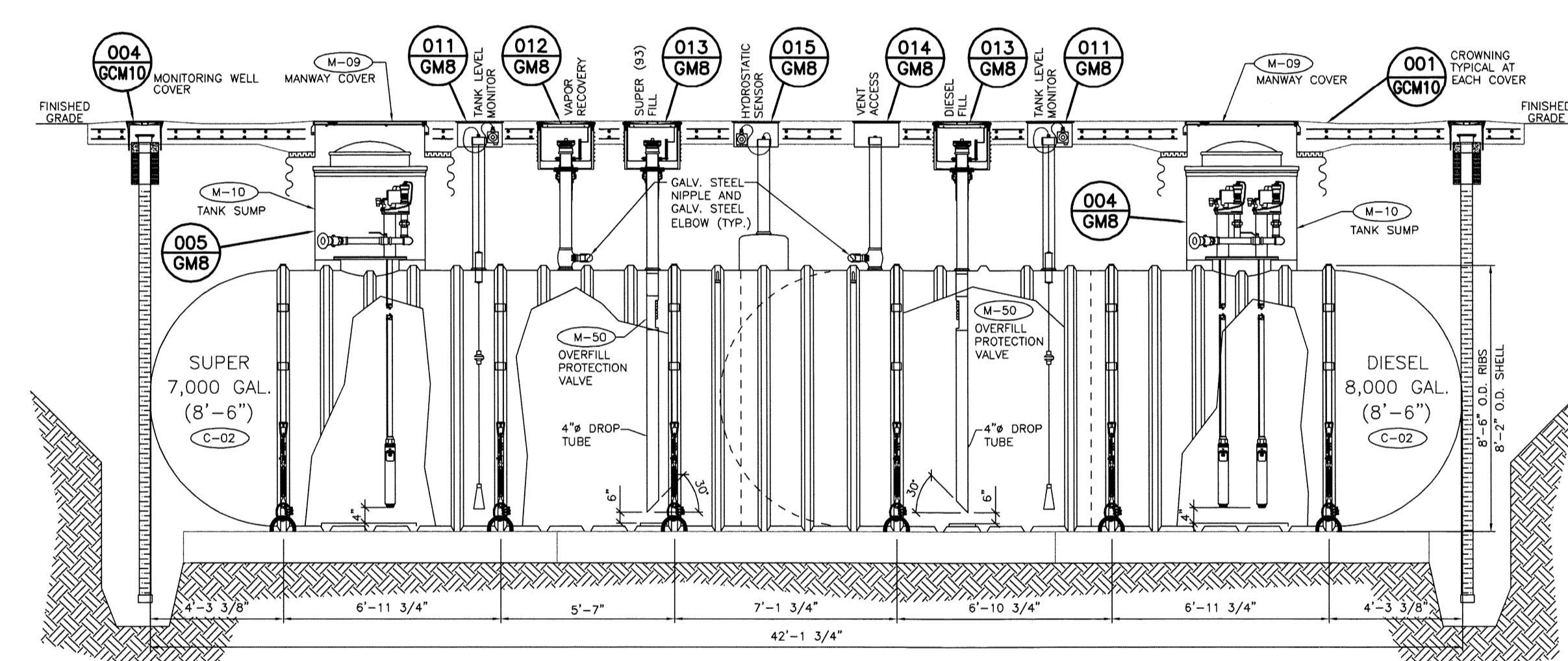
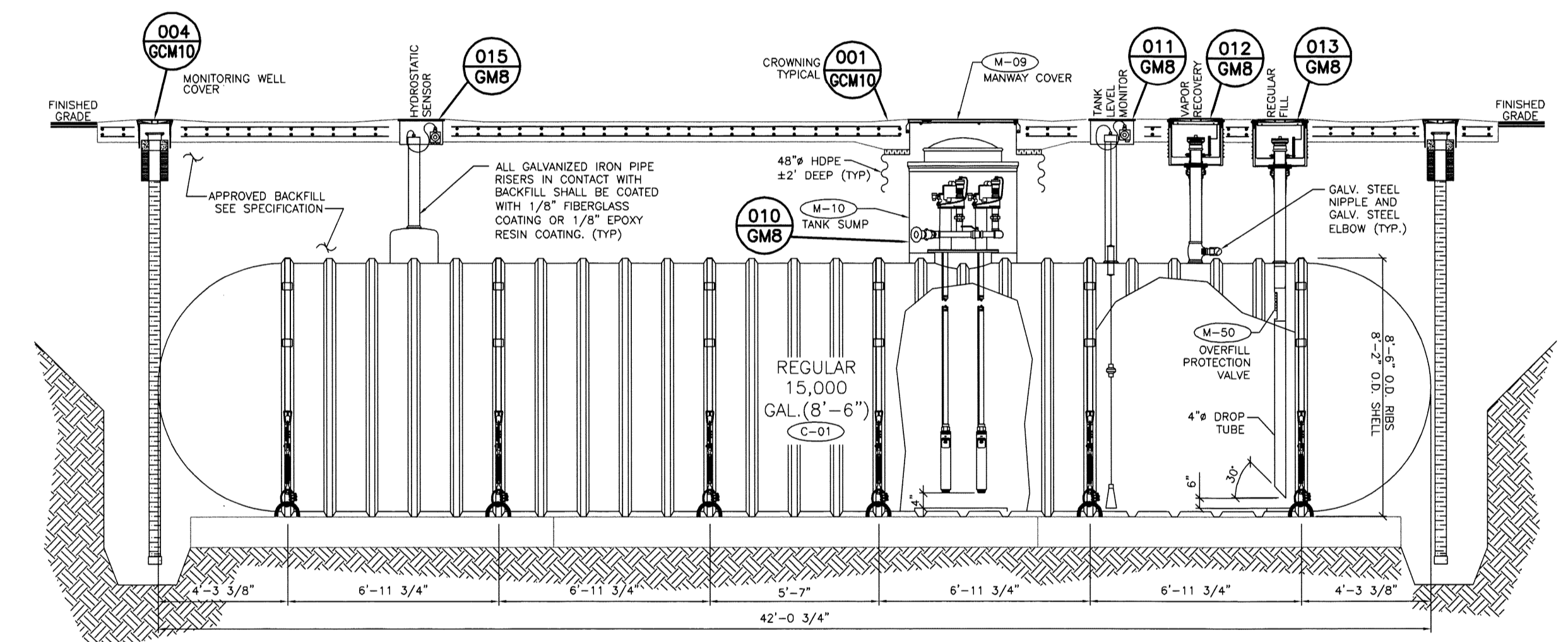
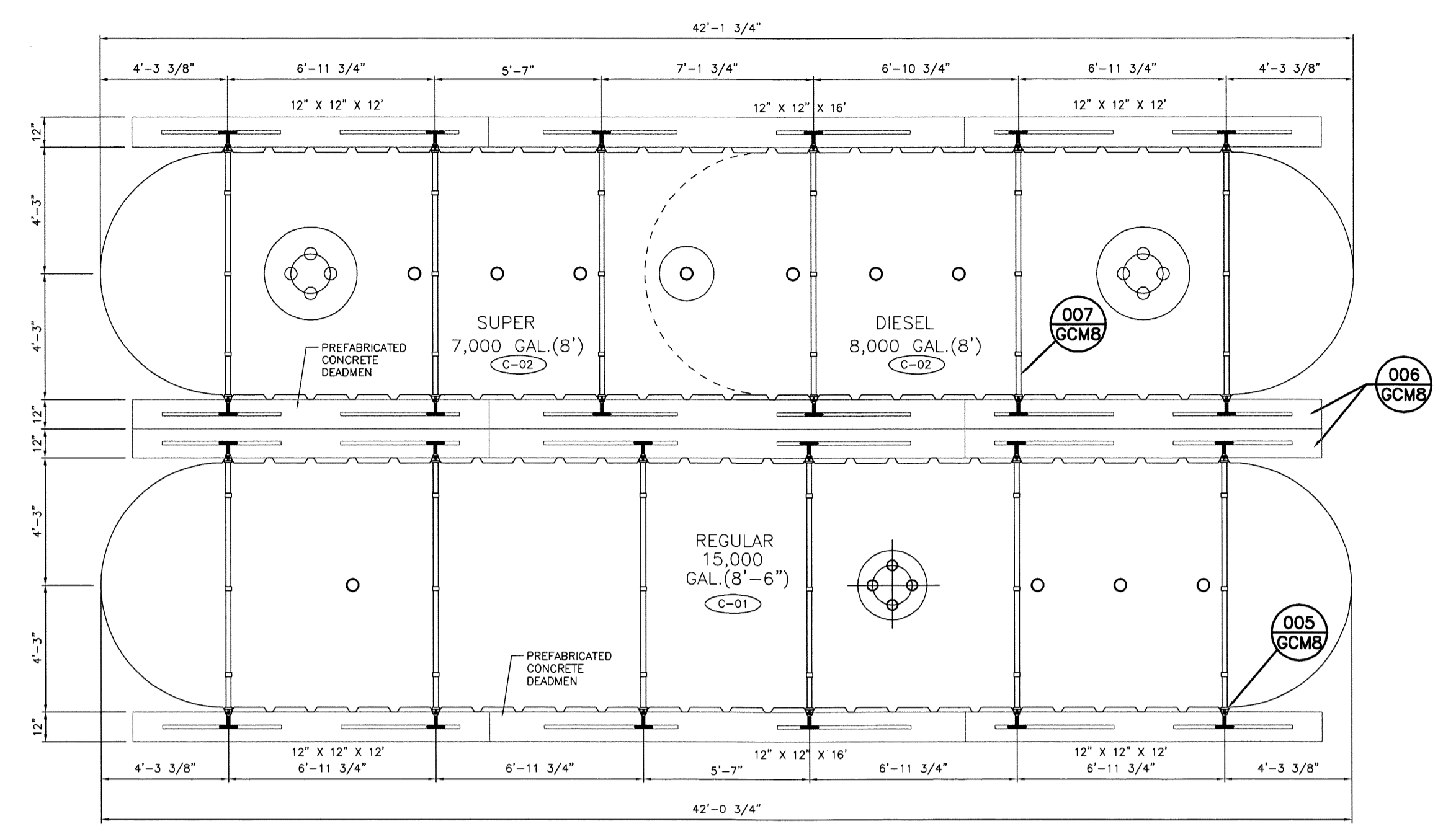
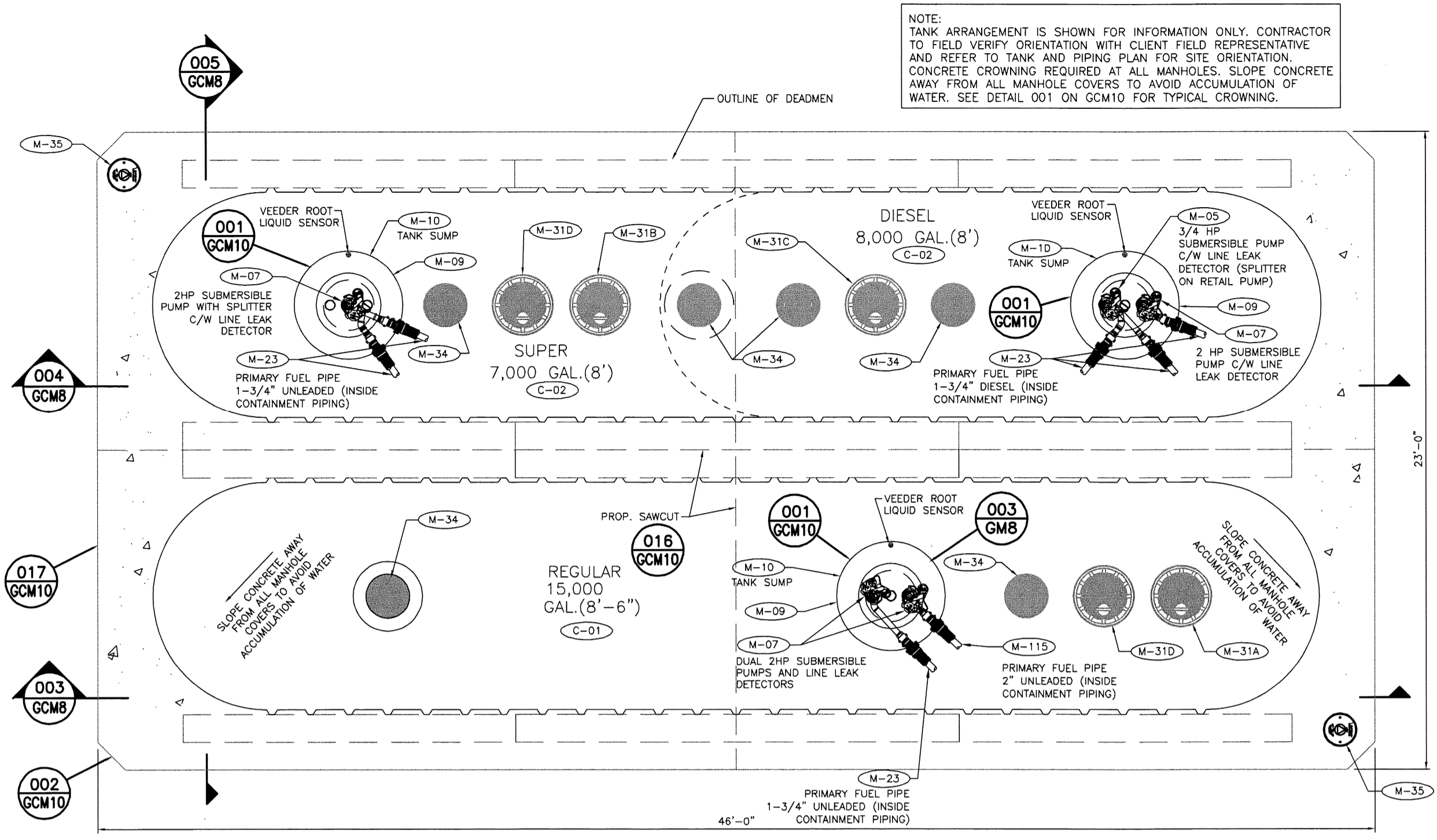
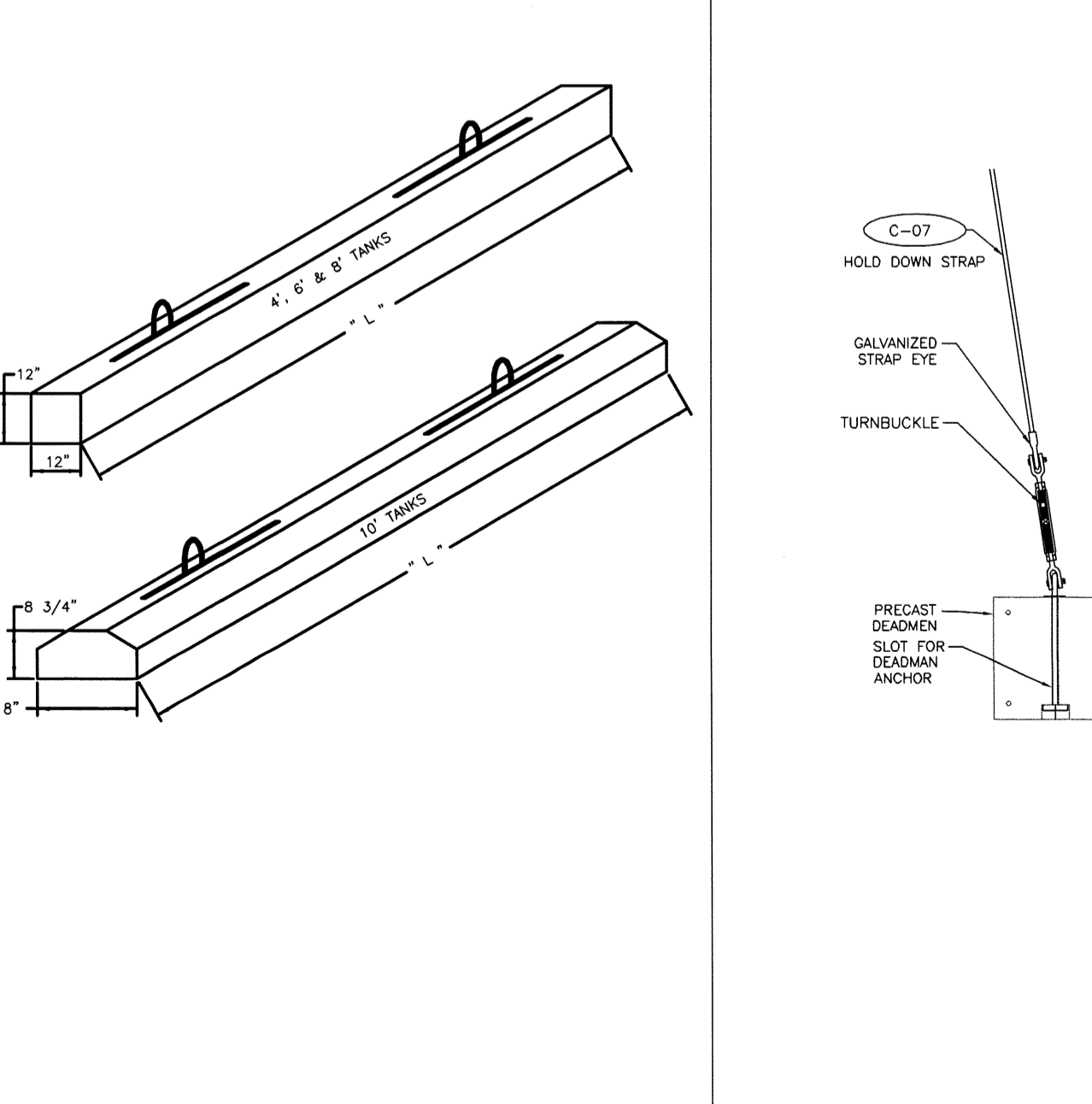


Table with columns for tank capacity, dimensions, and deadman specifications. Includes ZCL Composites Inc. logo and product specifications for various tank sizes.



- ☐ SUPERSEDES ALL PREVIOUS ISSUES
☐ APPROVED FOR CONSTRUCTION
☐ PRELIMINARY-NOT FOR CONSTRUCTION
☐ ISSUED TO: \_\_\_\_\_

DATE \_\_\_\_\_

Revision table with columns for REV, DATE, BY, and REVISION.

Table with columns for REV, DATE, BY, and REVISION.

REVISIONS section with MHF Design Consultants, Inc. logo and contact information.

Professional Engineer seal for Frank C. Monteiro, State of Maine, License No. 7201.

IRVING logo and project information including drawing number (GCM8) and date (1/26/16).

IRVING OIL logo and address: 190 COMMERCE WAY, PORTSMOUTH, NH 03801.

PROJECT: 393 COMMERCIAL STREET, PORTLAND, MAINE

SHEET TITLE: TANK, PIPING & TANK APRON PLAN

Table with columns for PROJECT, DRAWING NO. (GCM8), and REVISION.

COMPANY SUPERVISOR AND CONTRACTOR TO VERIFY ALL MEASUREMENTS ON WORK OR AT SITE. THIS DRAWING IS THE PROPERTY OF IRVING OIL LTD. AND SHALL BE RETURNED ON COMPLETION OF WORK.

F:\Projects\_GAD\3880\15\_3880\_GCM8.dwg Layout1 1/26/16 5:33pm DSA