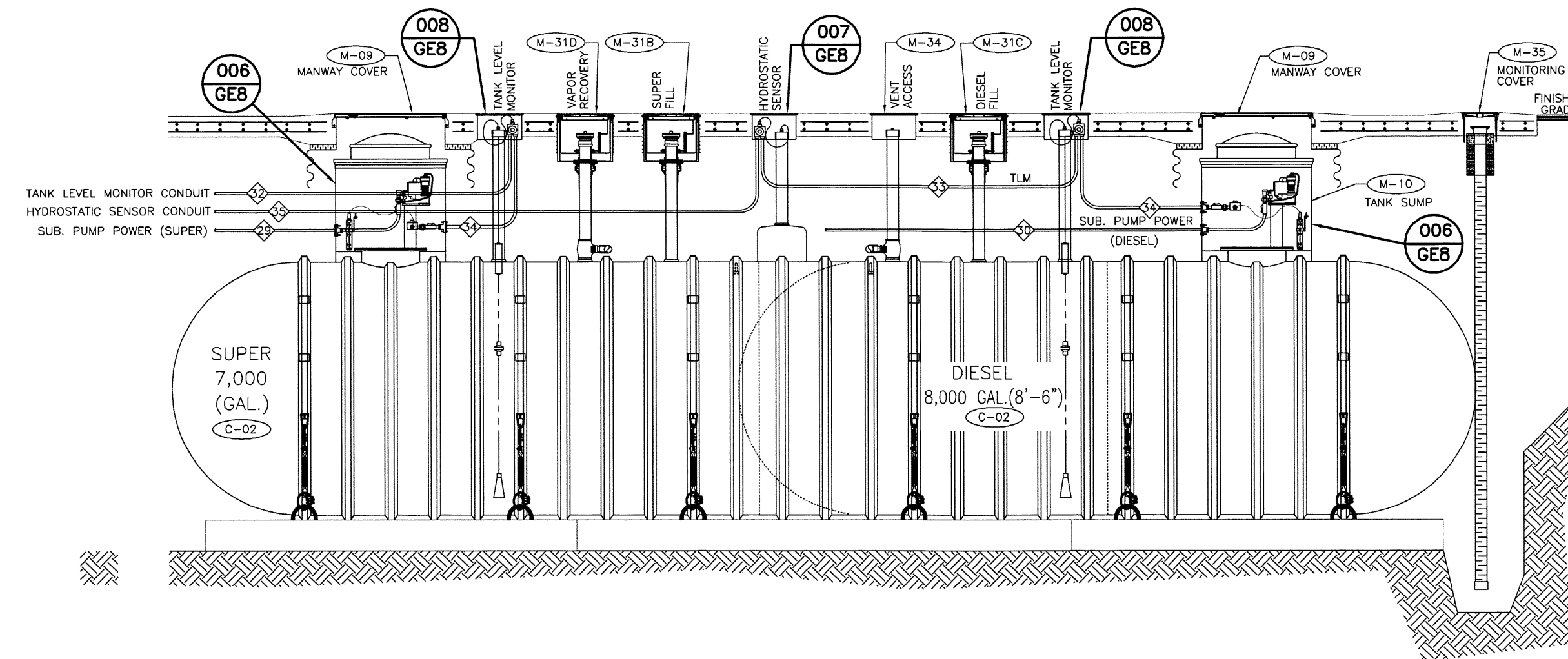
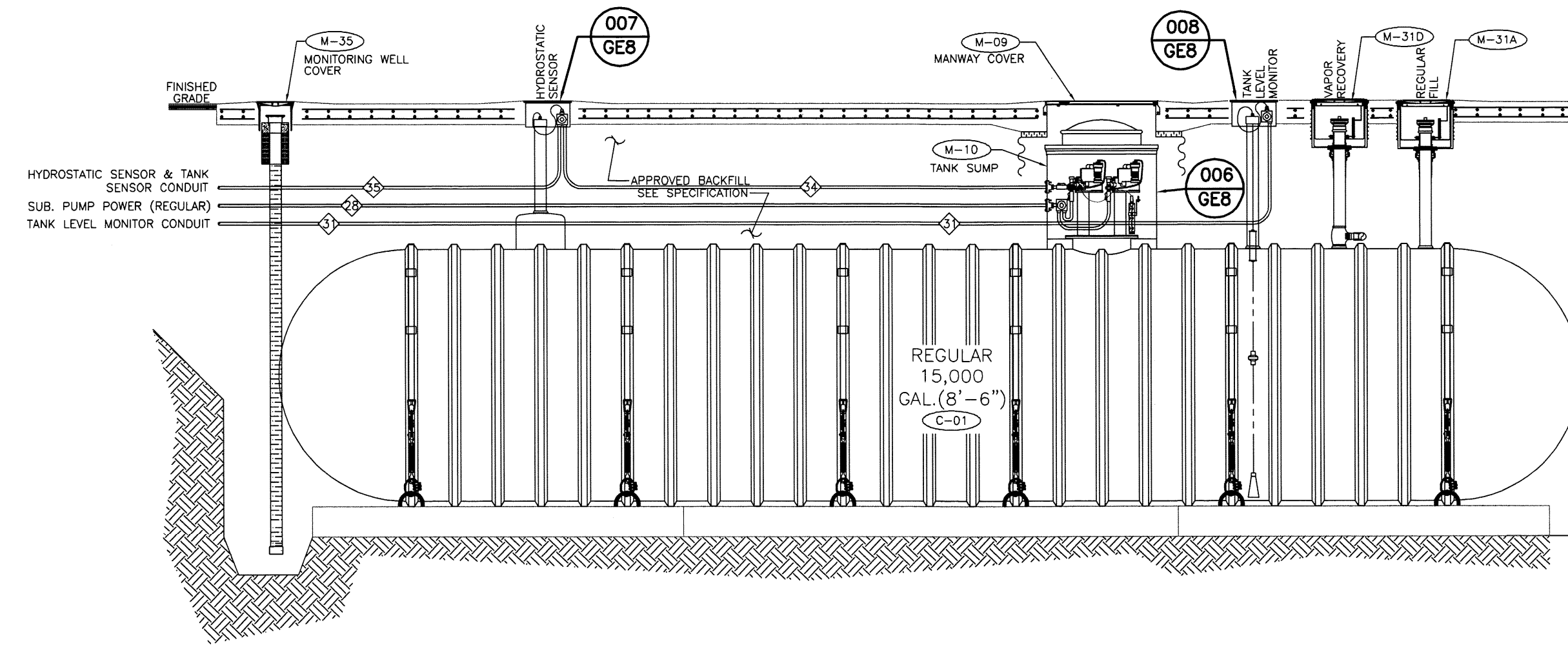
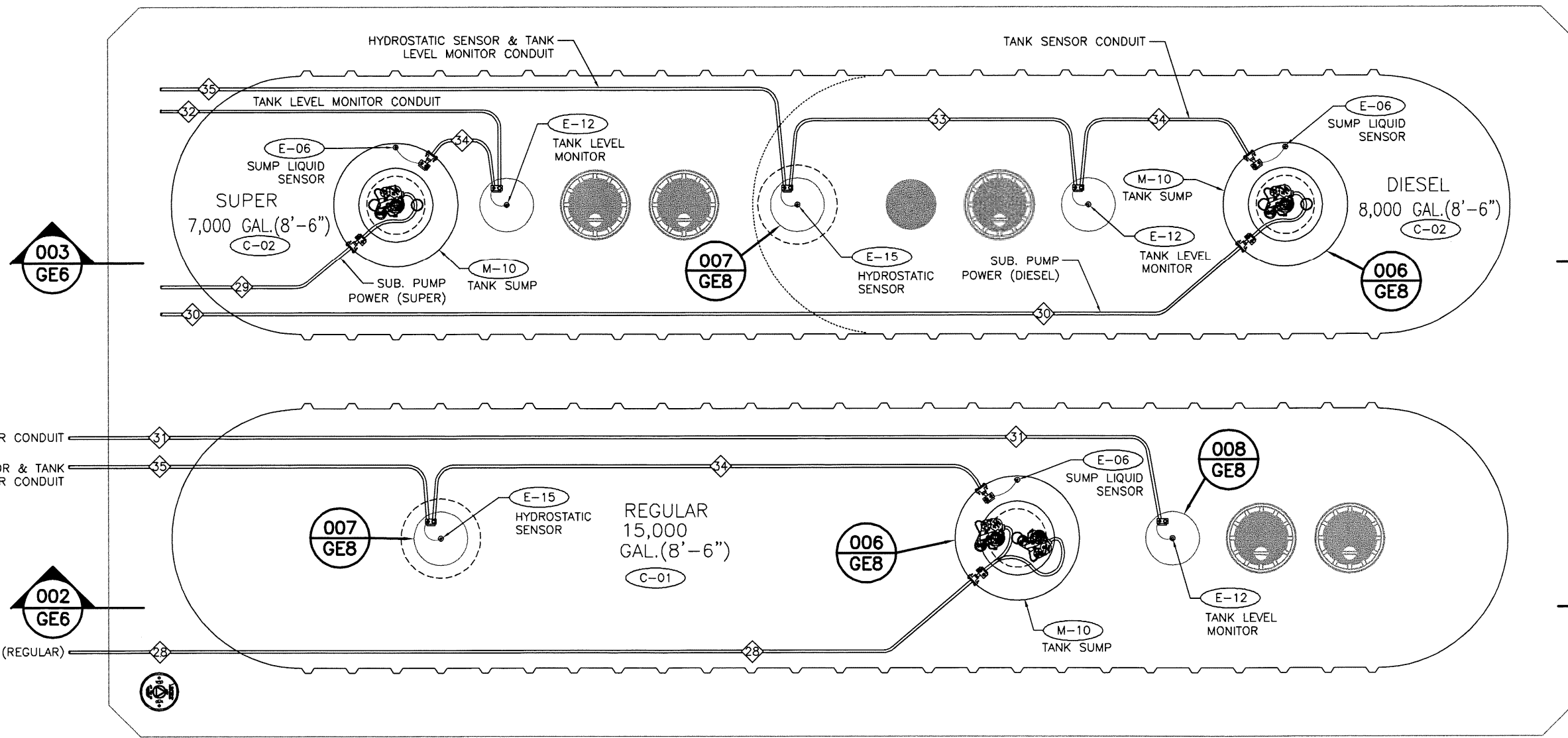


- SUPERSEDES ALL PREVIOUS ISSUES
- APPROVED FOR CONSTRUCTION
- PRELIMINARY-NOT FOR CONSTRUCTION
- ISSUED TO: \_\_\_\_\_

DATE \_\_\_\_\_



CONDUIT SCHEDULE			
INDIVIDUAL CONDUIT RUNS		INDIVIDUAL CONDUIT RUNS	
No.	USE	CONDUIT SIZE	WIRE SIZE
<b>DISPENSER APRON</b>			
1	- DISPENSER SUMP SENSOR - HOME RUN	(1" ø)	4PR #18 AWG INDIVIDUALLY SHIELDED
2	- DISPENSER SUMP SENSOR - IN LINE	(1" ø)	4PR #18 AWG INDIVIDUALLY SHIELDED
3	- DISPENSER NO. 1 POWER / DATA - HOME RUN	(1" ø)	8C #12 AWG THHN
4	- DISPENSER NO. 2 POWER / DATA - HOME RUN	(1" ø)	8C #12 AWG THHN
5	- DISPENSER NO. 3 POWER / DATA - HOME RUN	(1" ø)	8C #12 AWG THHN
6	- DISPENSER NO. 4 POWER / DATA - HOME RUN	(1" ø)	8C #12 AWG THHN
7	- DISPENSER NO. 5 POWER / DATA - HOME RUN	(1" ø)	8C #12 AWG THHN
8	- DISPENSER NO. 6 POWER / DATA - HOME RUN	(1" ø)	8C #12 AWG THHN
9	- DISPENSER NO. 7 POWER / DATA - HOME RUN	(1" ø)	8C #12 AWG THHN
10	- DISPENSER NO. 8 POWER / DATA - HOME RUN	(1" ø)	8C #12 AWG THHN
11	- DISPENSER NO. 1 SPARE / (CATS) - HOME RUN	(1" ø)	(1/4" PULL ROPE)
12	- DISPENSER NO. 2 SPARE / (CATS) - HOME RUN	(1" ø)	(1/4" PULL ROPE)
13	- DISPENSER NO. 3 SPARE / (CATS) - HOME RUN	(1" ø)	(1/4" PULL ROPE)
14	- DISPENSER NO. 4 SPARE / (CATS) - HOME RUN	(1" ø)	(1/4" PULL ROPE)
15	- DISPENSER NO. 5 SPARE / (CATS) - HOME RUN	(1" ø)	(1/4" PULL ROPE)
16	- DISPENSER NO. 6 SPARE / (CATS) - HOME RUN	(1" ø)	(1/4" PULL ROPE)
17	- DISPENSER NO. 7 SPARE / (CATS) - HOME RUN	(1" ø)	(1/4" PULL ROPE)
18	- DISPENSER INTERCOM - HOME RUN	(1" ø)	4PR #18 AWG UNSHIELDED TWISTED PAIR
19	- DISPENSER INTERCOM - IN LINE	(1" ø)	4PR #18 AWG UNSHIELDED TWISTED PAIR
20	- CANOPY LIGHTING - HOME RUN	(1" ø)	12C #12 AWG THHN
21	- FIRE SUPPRESSION - HOME RUN	(1" ø)	(1/4" PULL ROPE)
22	- CANOPY CAMERA - HOME RUN	(1" ø)	12C #12 AWG THHN
23	- SPARE - HOME RUN	(1" ø)	(1/4" PULL ROPE)
<b>TANK FARM</b>			
24	- SUBMERSIBLE PUMP (REGULAR)	(1" ø)	8C #10 AWG THHN
25	- SUBMERSIBLE PUMP (PREMIUM)	(1" ø)	8C #10 AWG THHN
26	- SUBMERSIBLE PUMP (DIESEL)	(1" ø)	8C #10 AWG THHN
27	- TANK LEVEL MONITOR (REGULAR TANK)	(1" ø)	8C #12 AWG THHN
28	- TANK LEVEL MONITOR (PREMIUM COMPARTMENT)	(1" ø)	8C #12 AWG THHN
29	- TANK LEVEL MONITOR (DIESEL COMPARTMENT)	(1" ø)	8C #12 AWG THHN
30	- TANK SUMP SENSORS	(1" ø)	4PR #18 AWG INDIVIDUALLY SHIELDED
31	- INTERSTITIAL SENSORS	(1" ø)	4PR #18 AWG INDIVIDUALLY SHIELDED
32	- OVERFILL ALARM	(1" ø)	(1/4" PULL ROPE)
33	- OVERFILL ALARM ACKNOWLEDGEMENT SWITCH	(1" ø)	(1/4" PULL ROPE)
34	- DISPENSER NO. 7 POWER / DATA - HOME RUN	(1" ø)	8C #12 AWG THHN
35	- DISPENSER NO. 8 POWER / DATA - HOME RUN	(1" ø)	8C #12 AWG THHN
36	- DISPENSER NO. 9 POWER / DATA - HOME RUN	(1" ø)	8C #12 AWG THHN
37	- DISPENSER NO. 10 POWER / DATA - HOME RUN	(1" ø)	8C #12 AWG THHN
38	- DISPENSER NO. 11 POWER / DATA - HOME RUN	(1" ø)	8C #12 AWG THHN
39	- DISPENSER NO. 12 POWER / DATA - HOME RUN	(1" ø)	8C #12 AWG THHN
40	- DISPENSER NO. 13 POWER / DATA - HOME RUN	(1" ø)	8C #12 AWG THHN
41	- DISPENSER NO. 7 SPARE / (CATS) - HOME RUN	(1" ø)	(1/4" PULL ROPE)
42	- DISPENSER NO. 8 SPARE / (CATS) - HOME RUN	(1" ø)	(1/4" PULL ROPE)
43	- DISPENSER NO. 9 SPARE / (CATS) - HOME RUN	(1" ø)	(1/4" PULL ROPE)
44	- DISPENSER NO. 10 SPARE / (CATS) - HOME RUN	(1" ø)	(1/4" PULL ROPE)
45	- DISPENSER NO. 11 SPARE / (CATS) - HOME RUN	(1" ø)	(1/4" PULL ROPE)
46	- DISPENSER NO. 12 SPARE / (CATS) - HOME RUN	(1" ø)	(1/4" PULL ROPE)
47	- DISPENSER NO. 13 SPARE / (CATS) - HOME RUN	(1" ø)	(1/4" PULL ROPE)

REVISIONS

**IRVING OIL**  
190 COMMERCE WAY  
PORTSMOUTH, NH 03801

PROJECT: 393 COMMERCIAL STREET  
PORTLAND, MAINE

SHEET TITLE: **TANK ELECTRICAL LAYOUT AND DETAILS**

PROJECT: GE6 DRAWING NO: REVISION: -

COMPANY SUPERVISOR AND CONTRACTOR TO VERIFY ALL MEASUREMENTS ON WORK OR AT SITE. THIS DRAWING IS THE PROPERTY OF IRVING OIL LTD. AND SHALL BE RETURNED ON COMPLETION OF WORK.

F:\Projects\CAD\388015\3880 GE6.dwg GE6 1/27/16 9:38am DSA