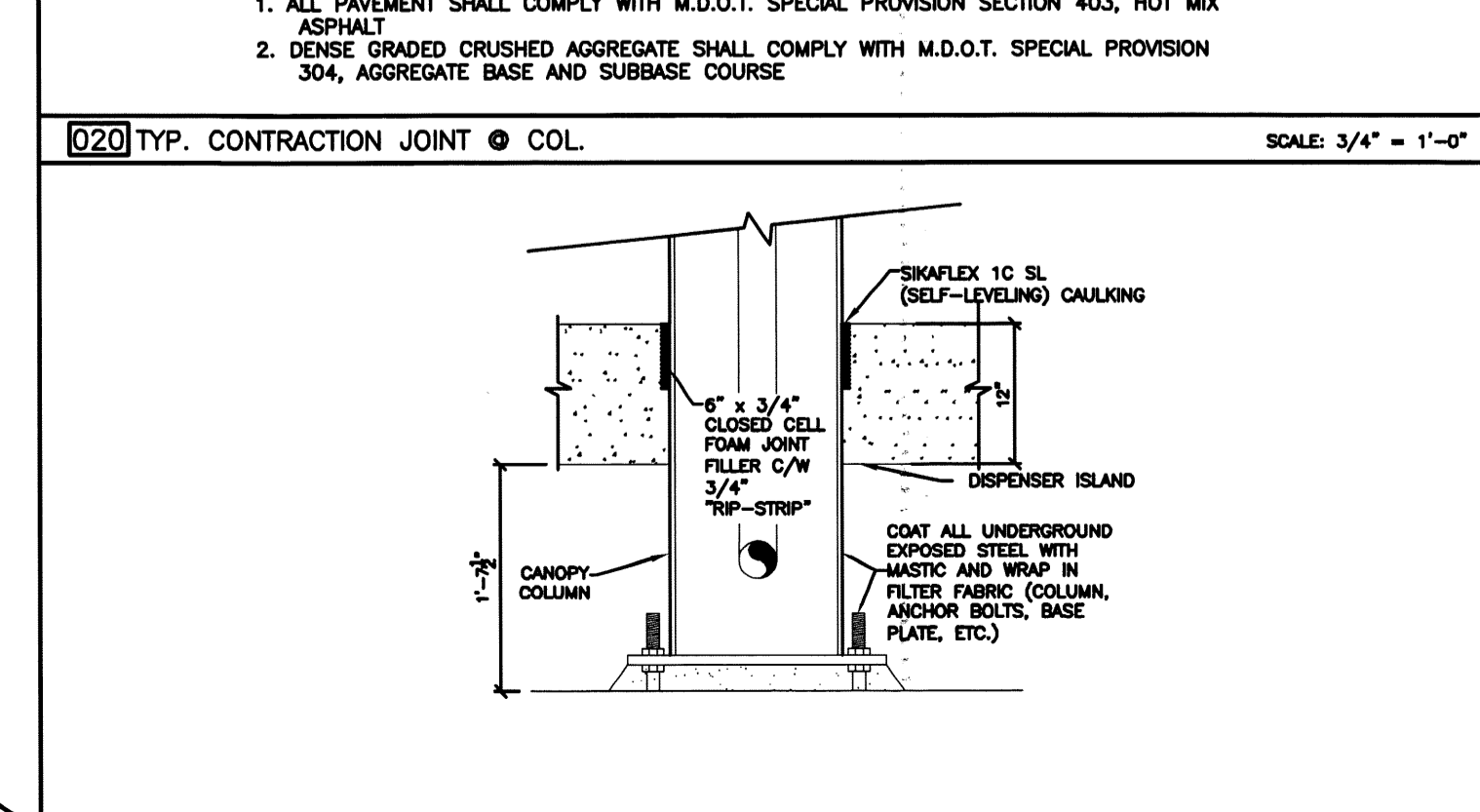
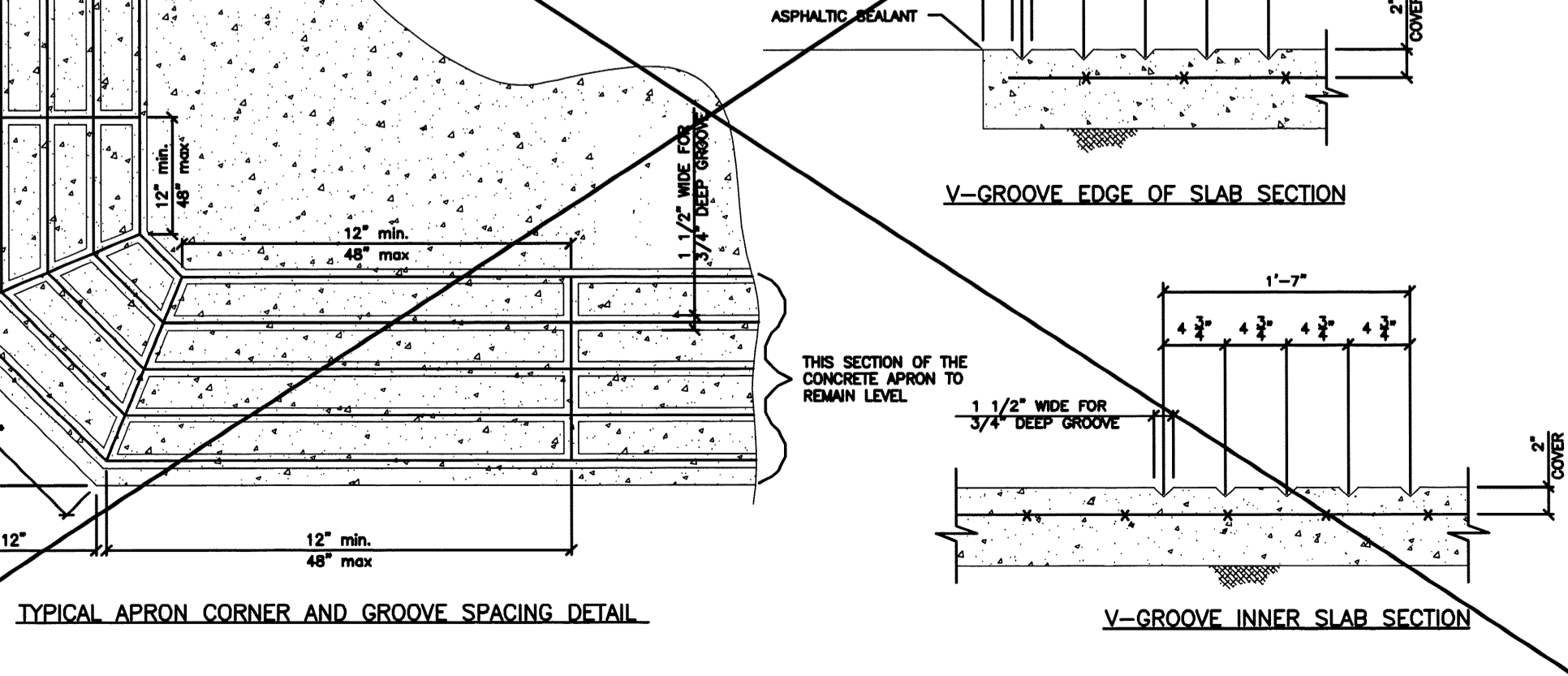
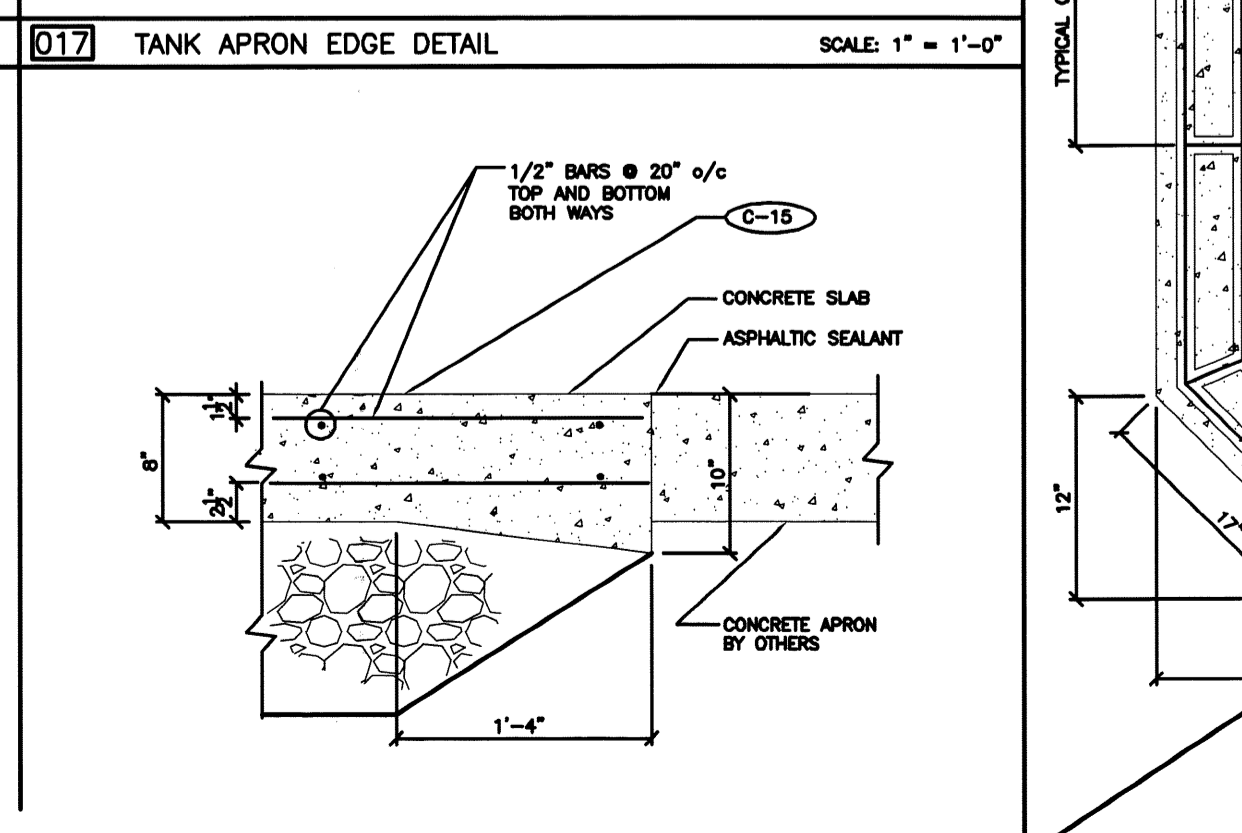
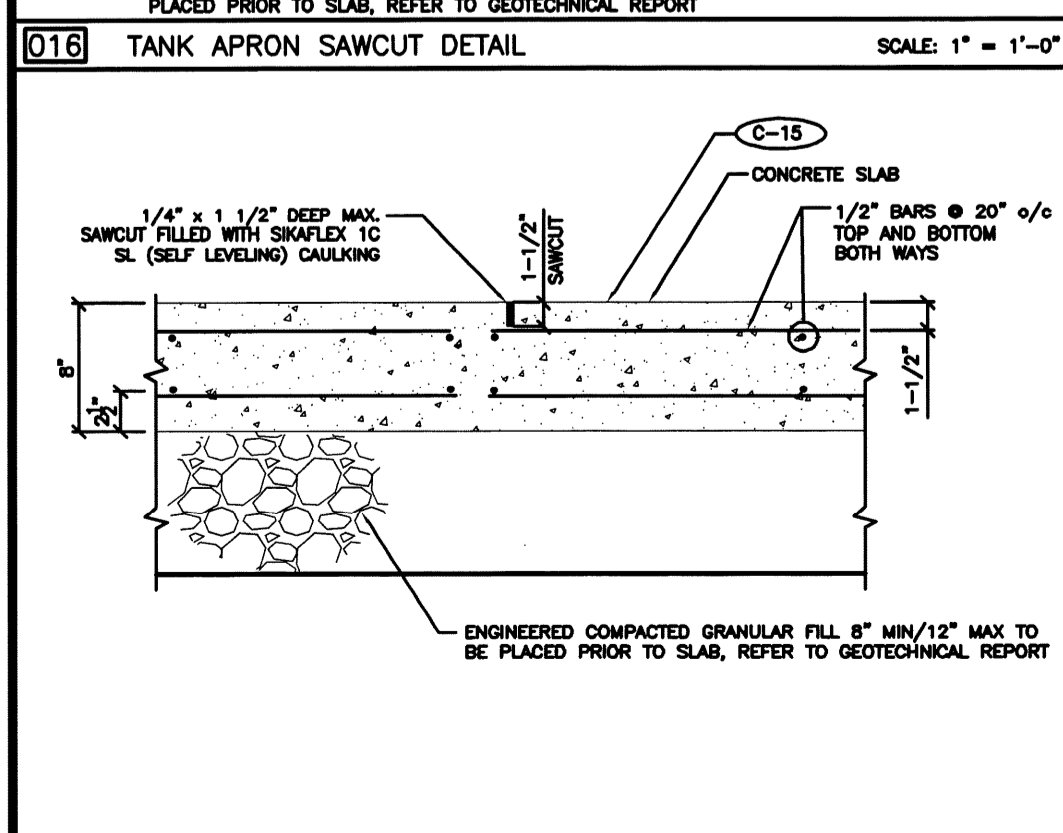
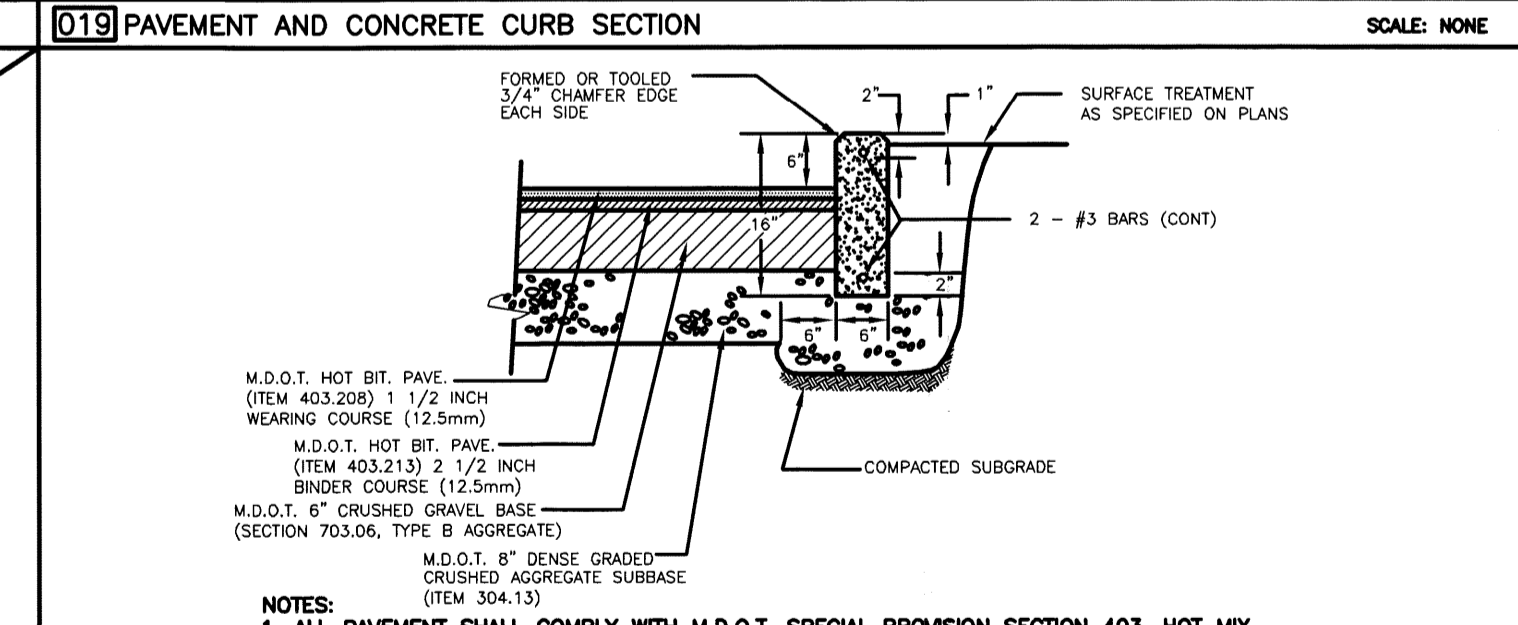
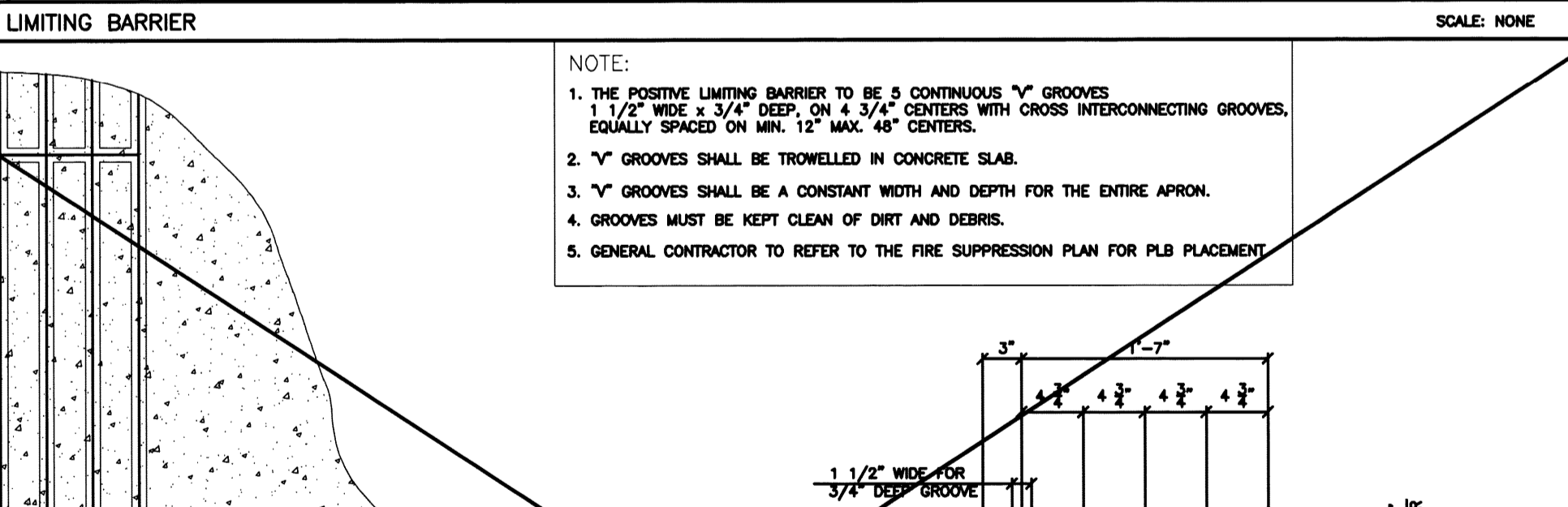
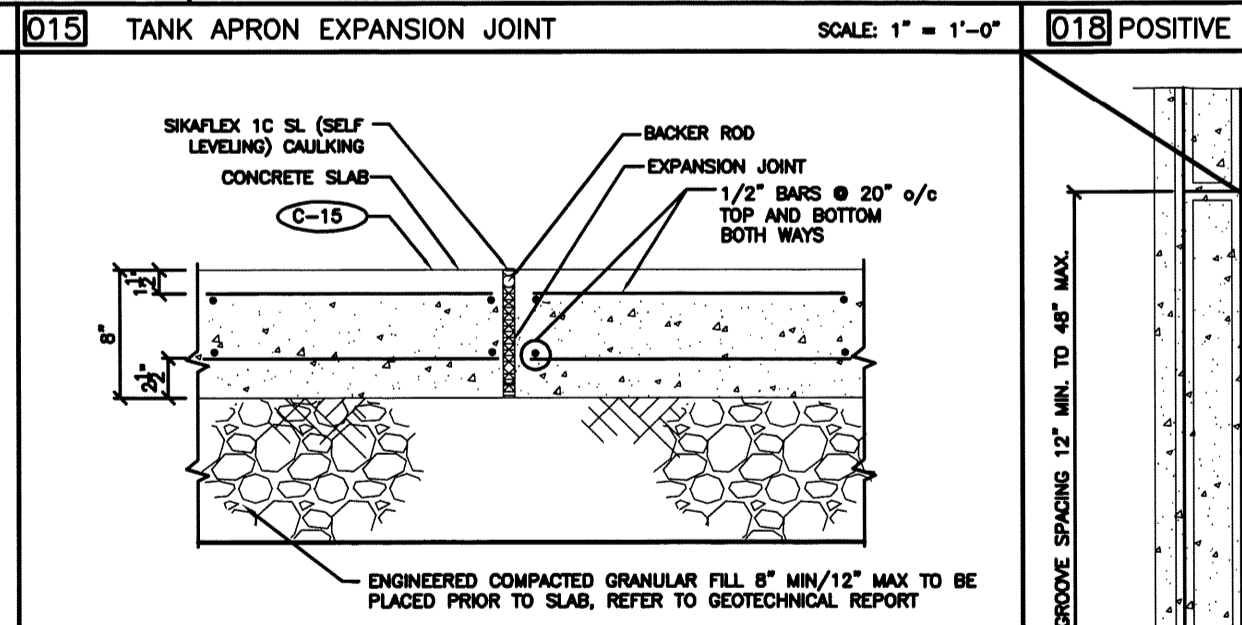
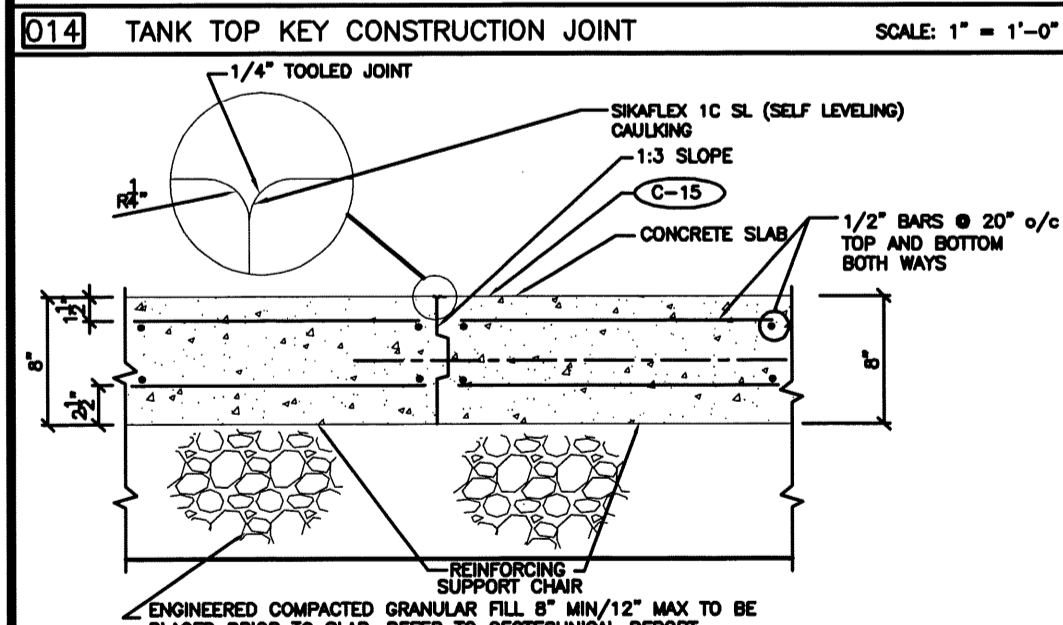
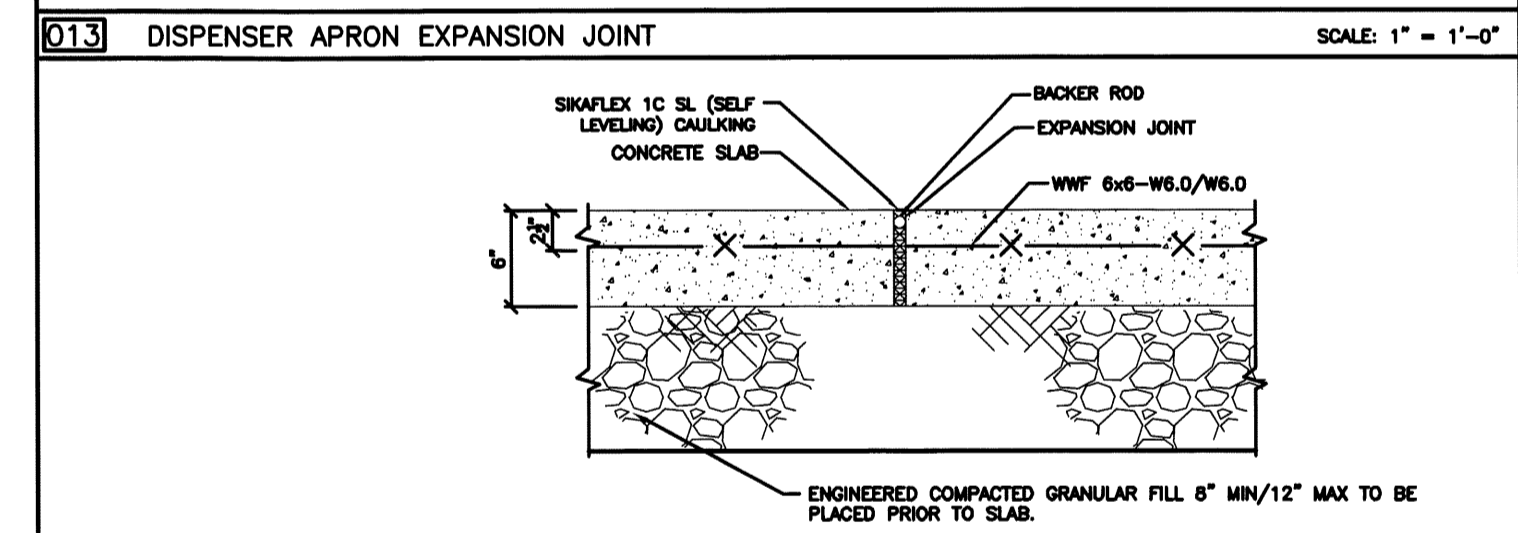
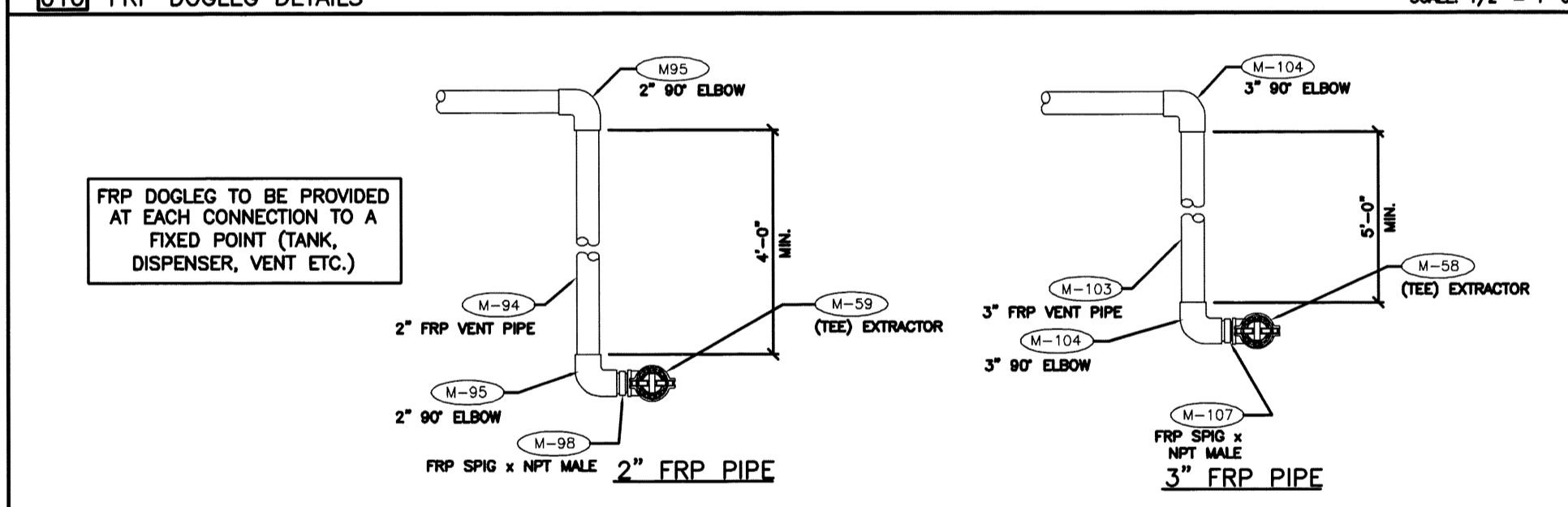
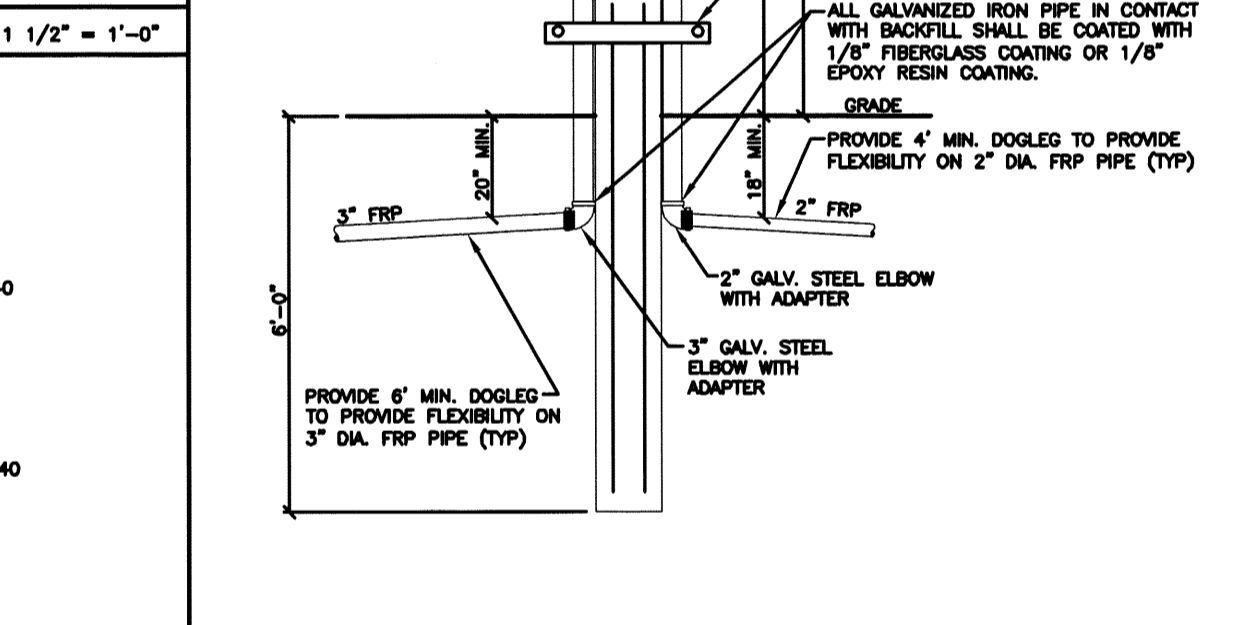
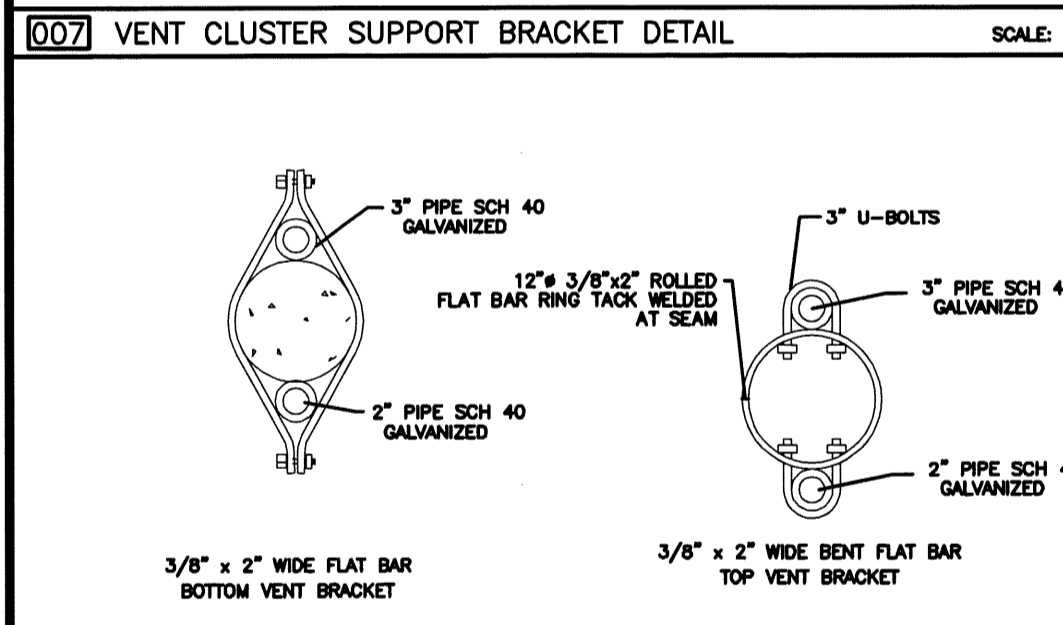
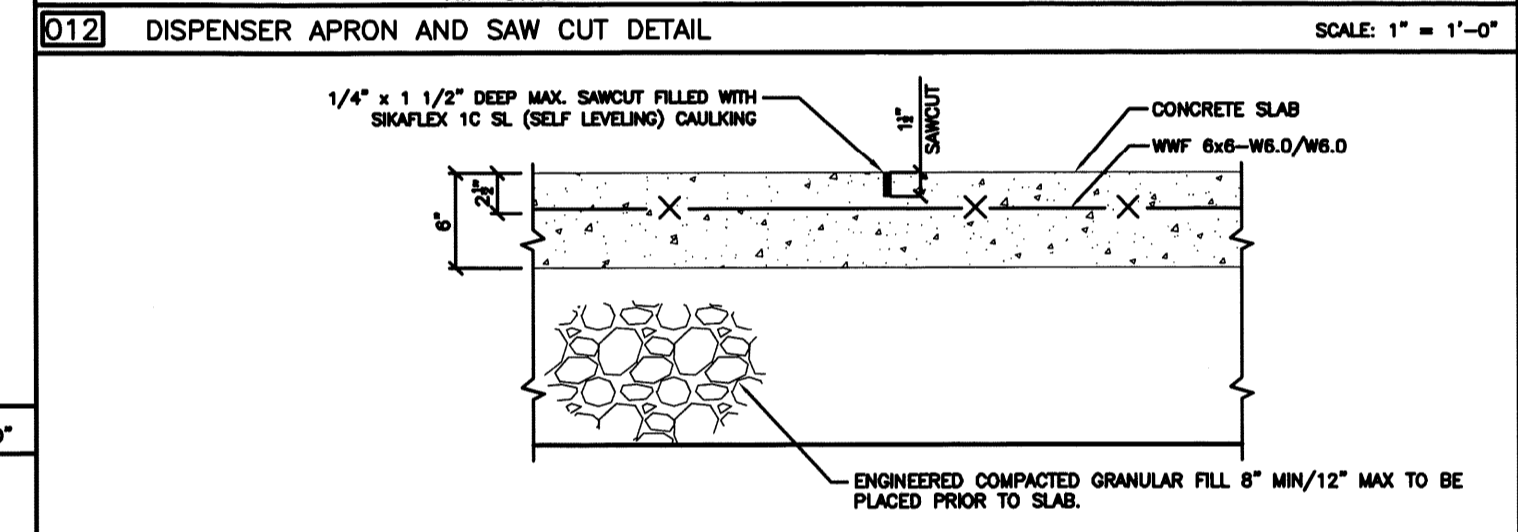
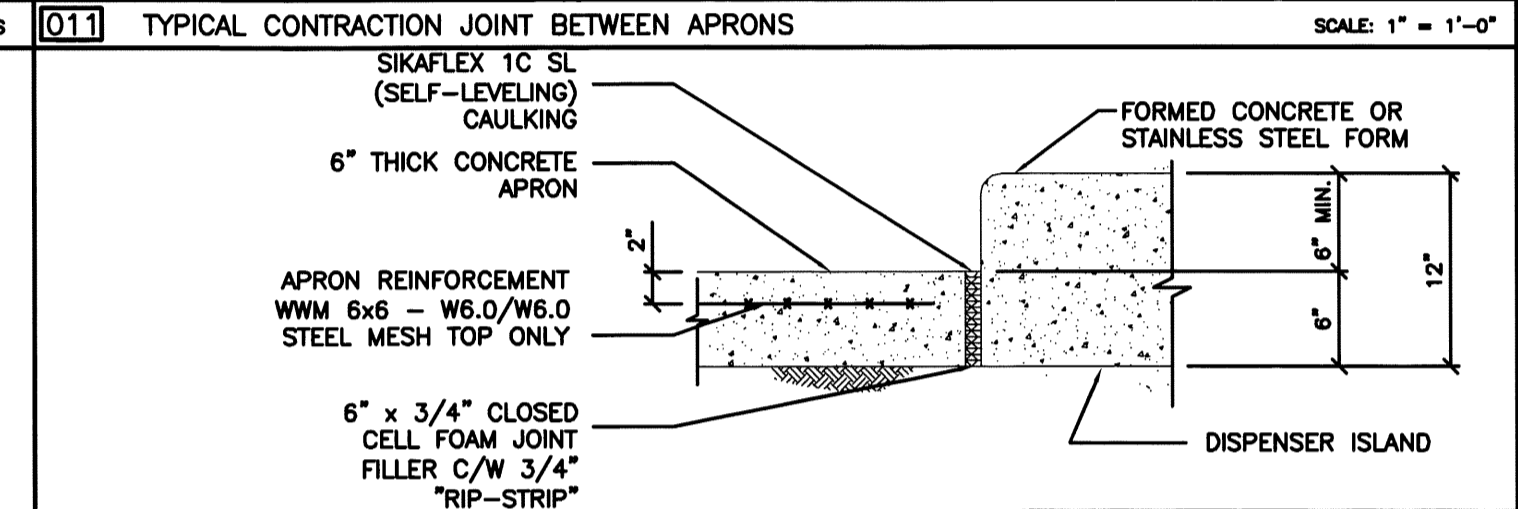
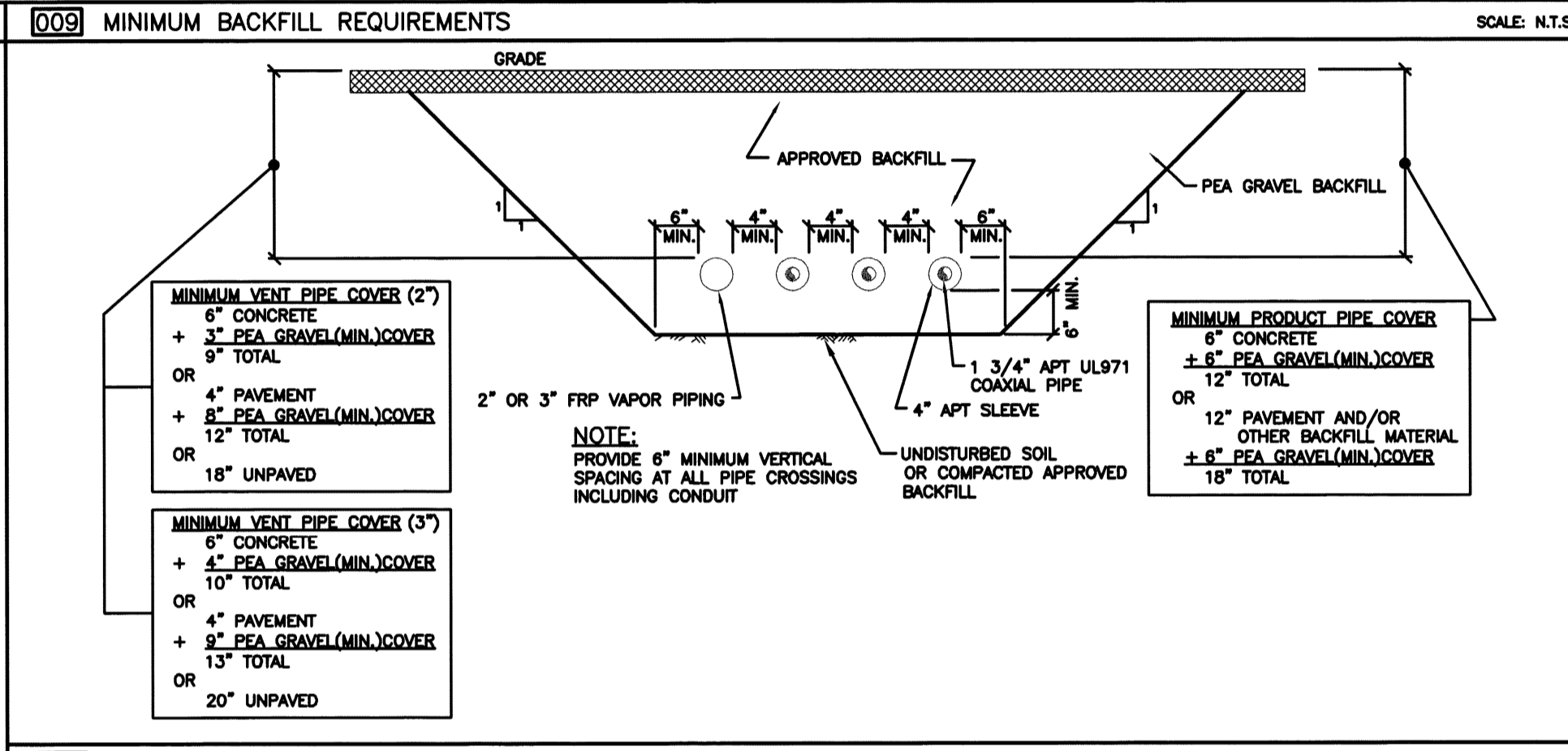
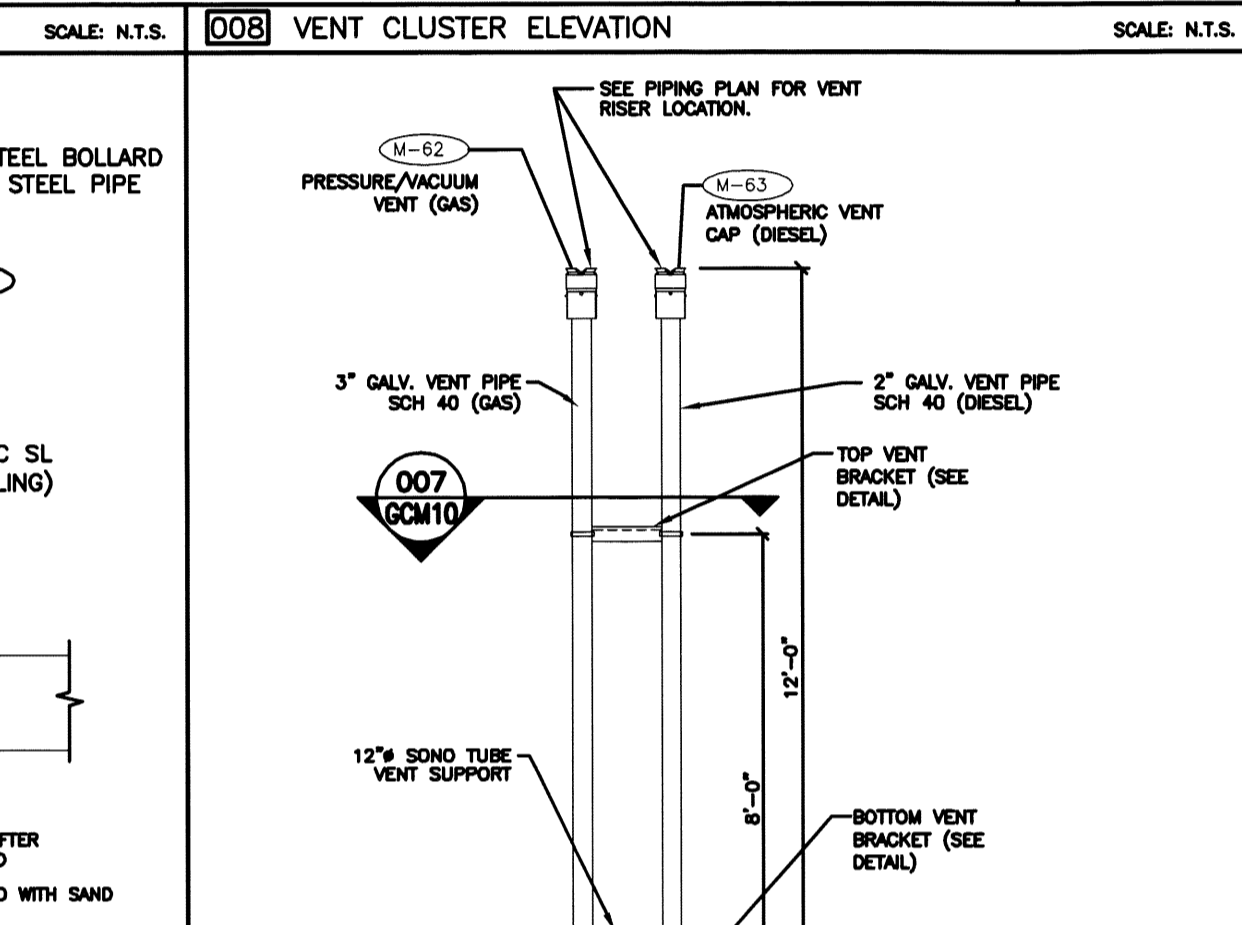
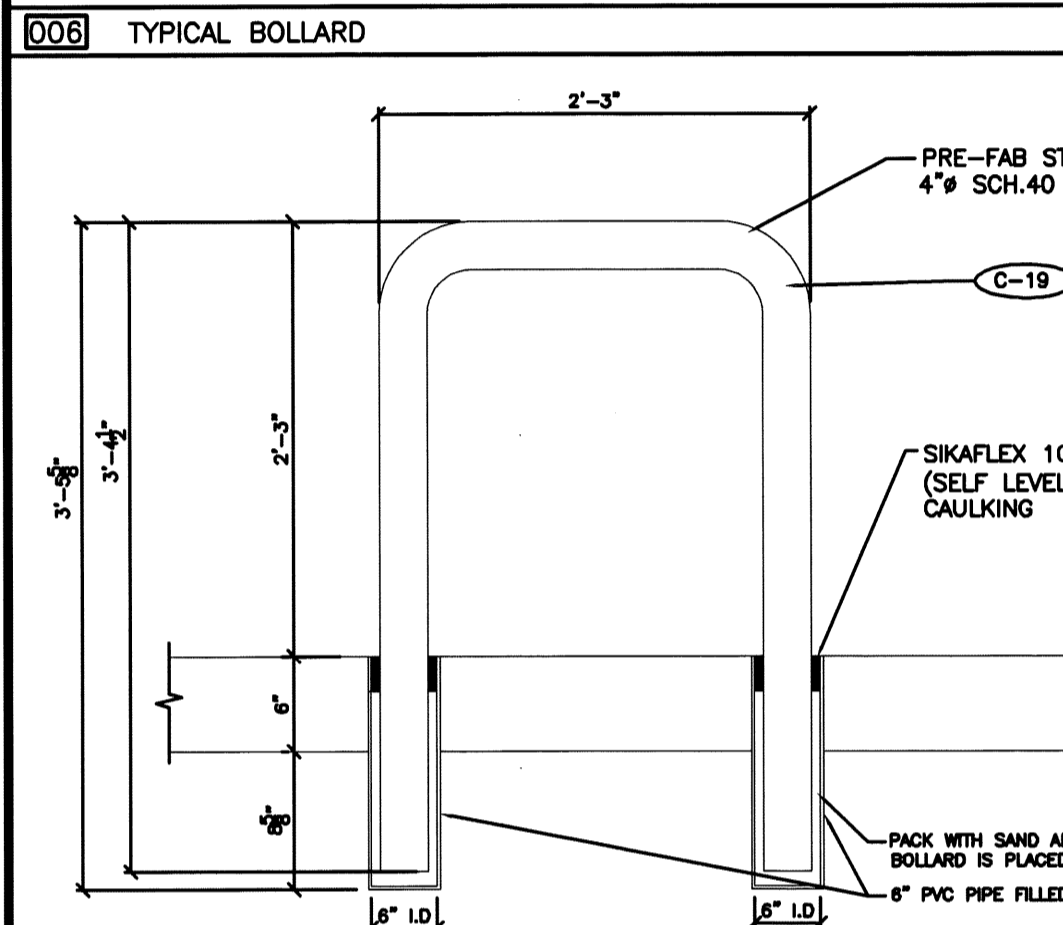


SUPERSEDES ALL PREVIOUS ISSUES
 APPROVED FOR CONSTRUCTION
 PRELIMINARY—NOT FOR CONSTRUCTION
 ISSUED TO: _____
 _____ DATE _____

- NOTES:
- CONCRETE SPECIFICATIONS:
 SOIL BEARING CAPACITY REQ'D : AS PER GEOTECHNICAL REPORT
 CONC. STRENGTH : 4000psi (281 kg/cm²) @ 28 DAYS
 3% TO 7% AIR, TROWELLED SMOOTH FINISH WITH TWO COATS SEALING/CURING COMPOUND.
 CANOPY FOOTING CONC. STRENGTH : REFER TO DRAWINGS PROVIDED BY MANUFACTURER.
 CONCRETE TO BE REINFORCED WITH STEEL MESH
 IF APPLICABLE REBAR YIELD STRENGTH : 60 k.s.i.
 - COORDINATE APRON ELEVATIONS ON THIS DRAWING WITH CIVIL DRAWINGS AND FIELD ELEVATIONS WHEN PROVIDED.
 - DISPENSER SUMPS TO BE SET IN PLACE AND USED AS A FORM TO POUR CONCRETE AROUND.
 - ALL EQUIPMENT INSTALLATIONS MUST COMPLY WITH MANUFACTURER'S SPECIFICATIONS.
 - ALL EQUIPMENT AND CONSTRUCTION ARE NEW.



REV	DATE	BY	REVISION

REVISONS

MHF Design Consultants, Inc.
 44 Siles Road, Suite One
 Salem, New Hampshire 03079
 (603) 893-0720
 ENGINEERS • PLANNERS • SURVEYORS
 www.mhfdesign.com

FRANK C. MONTEIRO
 7201
 LICENSED PROFESSIONAL ENGINEER
 STATE OF MAINE

IRVING
 SCALE: AS NOTED
 DATE: 1/26/16
 DRAWN BY: DSA
 DESIGNED BY: HS
 APPROVED BY: HS
 PROPERTY NO.: N/A
 REF-BLK: REF-BLK: REF-BLK:
 CAD FILE: 3880_GCM10.dwg
 PLOTTED: REF-BLK: REF-BLK:

IRVING OIL
 190 COMMERCE WAY
 PORTSMOUTH, NH 03801

PROJECT: 393 COMMERCIAL STREET
 PORTLAND, MAINE

SHEET TITLE: CONCRETE & PIPING DETAILS

PROJECT: _____ DRAWING NO: GCM10 REVISION: _____

COMPANY SUPERVISOR AND CONTRACTOR TO VERIFY ALL MEASUREMENTS ON WORK OR AT SITE. THIS DRAWING IS THE PROPERTY OF IRVING OIL LTD. AND SHALL BE RETURNED ON COMPLETION OF WORK.

F:\Projects\GCM10.dwg DET 1/26/16 5:37pm DSA