

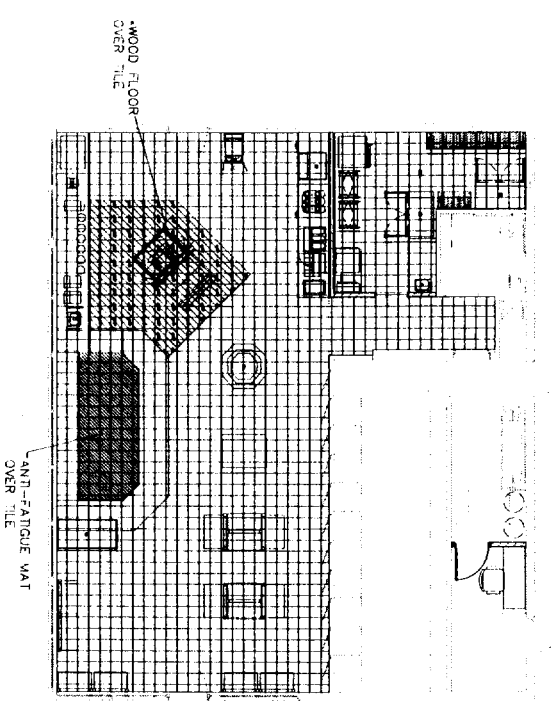
- SUPERSEDES ALL PREVIOUS ISSUES
- APPROVED FOR CONSTRUCTION
- PRELIMINARY-NOT FOR CONSTRUCTION
- ISSUED TO: _____
- BY _____ DATE _____

LEGEND	
	RECESSED FLUORESCENT LIGHTING: LSI CATALOG # PN118-112FD-SSO
	RECESSED FLUORESCENT LIGHTING: WITH EMERGENCY LIGHT: LSI CATALOG # PN118-112FD-EM-LM735-SSO
	RECESSED FLUORESCENT LIGHTING: LSI CATALOG # PN118-112FD-SSO
	RECESSED FLUORESCENT LIGHTING: WITH EMERGENCY LIGHT: LSI CATALOG # PN118-112FD-EM-LM735-SSO
	EXIT LIGHT SINGLE FACED CEILING MOUNTED LUMACELL EP450
	ACCENT LIGHTING LSI CATALOG # 7MM-NWW-232-SSO-LM735
	ACCENT LIGHTING LSI CATALOG # NWW-240BX-SSO
	EXHAUST FAN.

1. THE ELECTRICAL CONTRACTOR SHALL INSTALL ALL LIGHT FIXTURES AND WIRING PER THE NATIONAL ELECTRIC CODE.

EXHAUST THROUGH

REFERENCE NOTES:
 -2'-0" SOUND BATT ABOVE MANAGERS CI

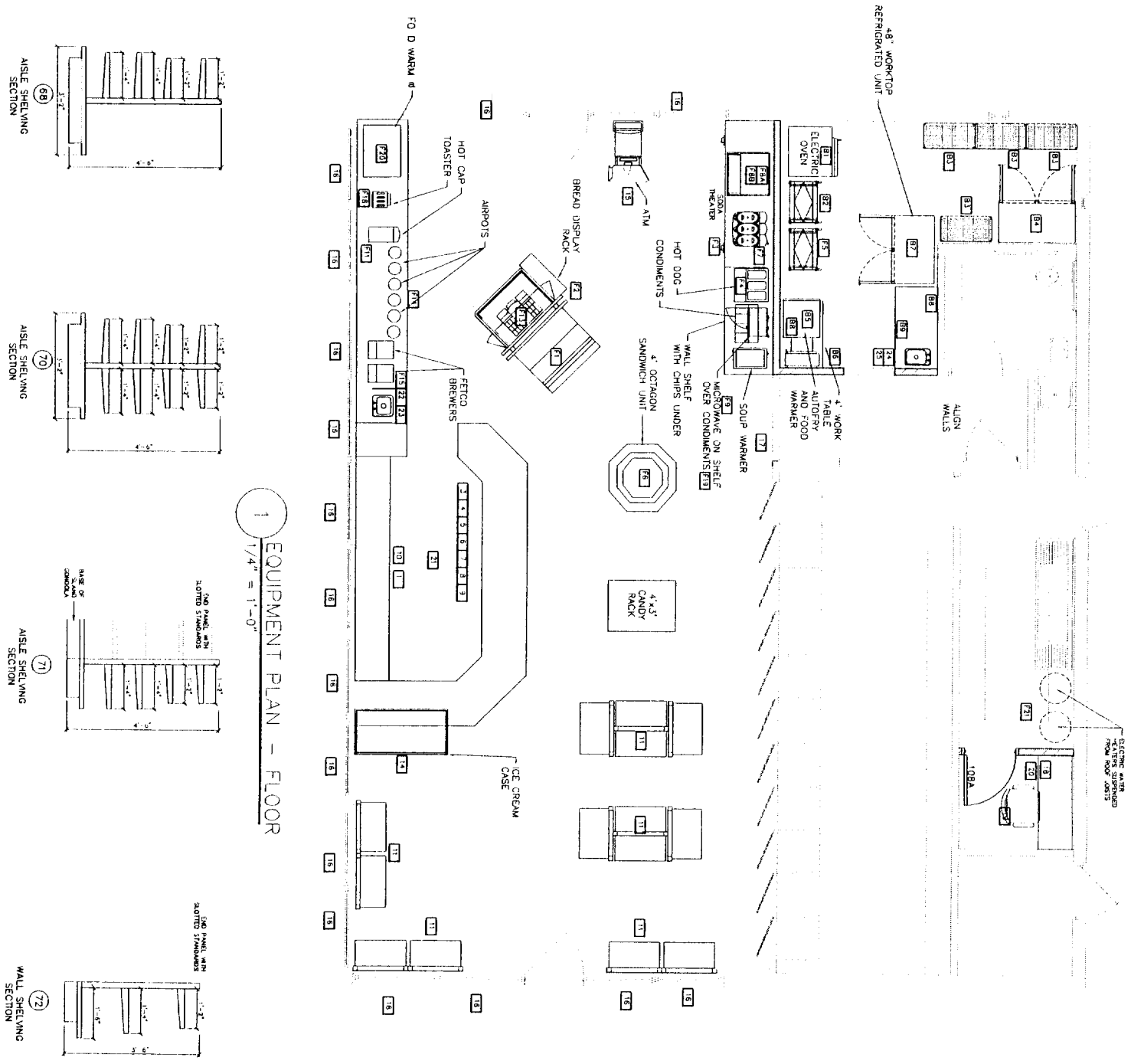


GENERAL NOTE:
 AT ANY CHANGE OF FLOOR ELEVATION, MAXIMUM HEIGHT TO BE LESS THAN 3/4" AND PROVIDES SLOPE BEVEL OVER 1/2" HORIZONTAL.

LEGEND
 FLOOR TILE
 FLOOR RECEPTACLE
 FLOOR DRAIN

FLOOR TILE PLAN
 SCALE: 1/8" = 1'-0"
 2
 16

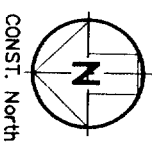
 Bangor Office 115 Main St. PO Box 2610 Bangor, ME 04402-2610 T. 207-947-0153 Portsmouth Office 400 The Hill, Suite 2 Portsmouth, NH 03810 T. 603-427-5400	
DRAWN BY: TAC SCALE: 1/8" = 1'-0" DATE: 5/02/05 CNO TILE DISTRIBUTION PLOTTER: HP GL3000	DESIGNED BY: APPROVED BY: PROJECT NO.: PROPERTY NO.:
PROJECT: PORTLAND, ME COMMERCIAL STREET SHEET TITLE: FLOOR TILE AND REFLECTED CEILING PLAN DRAWING NO.: A3 REVISION: A	
COMPANY'S SUPERVISOR AND CONTRACTOR TO VERIFY ALL DIMENSIONS ON WORK SHOWN ON THIS DRAWING IS THE PROPERTY OF AMES A/E, LTD. AND SHALL BE RETURNED ON COMPLETION OF WORK.	



1 EQUIPMENT PLAN - FLOOR
 1/4" = 1'-0"

SYMBOL	DESCRIPTION
B1	CABLE CONNECTION CABINET/PROTECTOR
B2	36" BAKERY RACK
B3	SHELVING RACK
B4	2-TONNAGE FREEZER
B5	HEAT LAMP
B6	AUTOPAN
B7	FOOD PREP UNIT
B8	SHELVING
B9	WORK TABLE
1	BANQUET SERVICE CABINET
2	COFFEE ISLAND
3	FAST FOOD COUNTER
4	COOL DRYER
5	SOA 3/4" N-BOX SYSTEM
6	SANDWICH / REFRIG. CABINET
7	FROZEN BEVERAGE MACHINE
8	SOA FOUNTAIN - SOA DISPENSER
9	SOA FOUNTAIN - ICE MAKER
10	WINDMILL
11	CARBONATED DISPENSER
12	CREAM DISPENSER
13	APPARTS
14	TOASTER
15	TOASTER CENTER
16	MONUMENT CENTER
17	HOT FOOD REFRIGERATOR
18	WATER HEATER
19	ANTI FATIGUE MAT
20	TRANSACTION ISLAND COUNTER
21	IMPACT UNIT
22	TRANSACTION ISLAND CASH REGISTER
23	TRANSACTION ISLAND SAFE
24	TRANSACTION ISLAND LOTTO MACHINE
25	TRANSACTION ISLAND LOTTO MACHINE
26	TRANSACTION COUNTER SCALE
27	CREDIT CARD TERMINAL
28	COFFEE DISPENSER UNIT
29	NOT USED
30	ICE CREAM / FROZEN FOOD
31	SMILING MACHINE
32	SUNSHINE
33	WARNING DANGER SIGN
34	MANAGER'S OFFICE COUNTER
35	OFFICE CHAIR
36	COMPUTER & PRINTER
37	FIRE EXTINGUISHERS
38	PAPER TOWEL DISPENSER
39	SOAP DISPENSER
40	HAIRER SOAP DISPENSERS
41	SOAP & LOTION DISPENSERS

SUPERSEDES ALL PREVIOUS ISSUES
 APPROVED FOR CONSTRUCTION
 PRELIMINARY—NOT FOR CONSTRUCTION
 ISSUED TO: _____
 BY _____ DATE _____



CONST. North

REFERENCE DRAWINGS

REV. DATE BY REVISION

AMES A/E
 ARCHITECTS & ENGINEERS
 Portland Office: 400 The Hill, Suite 2
 Bangor, ME 04402-2810
 Portland, NH 03810
 T. 603-427-5400
 Bangor Office: 115 Main St, PO Box 2610
 Bangor, ME 04402-2810
 T. 207-947-0153

IRVING
 SCALE: 1/4" = 1'-0"
 DATE: 5/02/05
 PROJECT NO. 5/02/05
 DRAWING NO. 100

IRVING OIL

PROJECT: PORTLAND, ME
 COMMERCIAL STREET

SHEET TITLE: EQUIPMENT PLAN

PROJECT: NO. NAME NO. REVISIONS
 A A.A. A

EQUIPMENT SCHEDULE

BAKERY EQUIPMENT SCHEDULE (Preparation Area)

SYMBOL	DESCRIPTION	MANUFACTURER	MODEL #	DIMENSIONS			ELECTRICAL		MECHANICAL			REMARKS	QTY.	RESPONSIBILITY	
				LENGTH	DEPTH	HEIGHT	VOLTS	AMPS	CM	DIM	VENT	GEN		SUPPLY	INSTALL
B1	2-3/4" CONNECTION DRY/POUNDER	SECURE	58A-28-3	28"	31"	67"	120/1PH					YES			FC
B2	3FT BAKERY KAX	WETRO	1838B	36"	6"	8"	115 V						HOOPER 10.75 120 3.0 AMP'S	1	QC
B3	SHELVING RACK	WETRO	1444W2	48"	24"	34"	115 V						4" X 3 SHELF'S	2	QC
B4	2-SLOPE REFRIGERATOR	WETRO	1444	54"	29 1/2"	31 1/4"	115 V/1PH						SELF CONTAINED	1	QC
B5	HEAT LAMP	HATCO	GHM-18	8"	2"	2"	120 V/1PH							1	QC
B6	AUXiliary	WILSON TECHNOLOGY	WT-10	27 1/2"	26 1/2"	25"	240/1PH	120 AMP'S						1	QC
B7	FOOD PREP UNIT	THE	ESB-48-18M	48 1/8"	34 1/8"	48"	115 V/1PH	2.0 AMP'S						1	QC
B8	SHELVING	SHAWMUT	SM 4536	36"	27"	35"							STAINLESS STEEL	1	QC
B9	WORK TABLE	CUSTOM												1	QC

FOOD SERVICE EQUIPMENT SCHEDULE (Fastfood Area)

F1	BAKERY DISPLAY CASE	CUSTOM		96"	54"	36"	115 V							1	QC
F2	COFFEE ISLAND	CUSTOM		36"	34"	36"	115 V							1	QC
F3	FASTFOOD COUNTER	CUSTOM					115 V							1	QC
F4	DOG CROPET	CHALLENGE SPRING	SPT2250	24.5"	24.5"	28"	120V/1PH	11.0					SEE CASKETWORK DRAWINGS	1	QC
F5	SOBA BAG-N-BOX SYSTEM	PEPS	35-SS3	33"	17 1/2"	48 1/2"	115V - 1/2PH						SELF CONTAINED	1	QC
F6	SANDWICH / PRODUCE CASE	SOUTHERN STORE TX	SP7-03	55 1/2"	45"	48"	208/1PH	13.9 AMP'S						1	QC
F7	PROTEIN REVENGE MACHINE	DECIWAHE	WT-2-DU-BL	14"	18 1/2"	36"	115V - 1/2PH	1.0					3/4" COP AND LID HOOPER UNITS, REQUIRES FILTERED WATER	1	QC
F8	SOBA FOUNTAIN - SOBA DISPENSER	PEPS	35-SS7	35 1/2"	36"	36"	115V - 1/2PH	1.0					REQUIRES FILTERED WATER, INSTALL RECEPT AT 36" ABOVE COUNTER	1	QC
F9	SOBA FOUNTAIN - ICE WATER	PEPS	35-SS7	35 1/2"	36"	36"	115V							1	QC
F10	WATER DISPENSER	PEPS	35-SS7	35 1/2"	36"	36"	120/208/1	2					1/4" WATER LINE REQUIRED, REQUIRES FILTERED WATER	1	QC
F11	CARDPUNCH DISPENSER	SECURE	4K-CM-10	15"	30"	35"	120V/240V	5		1/4"			REFRIGERATED UNIT	1	QC
F12	SERIAL DISPENSER	WETRO	103	40 1/2"	20 1/2"	45"	120/60 Hz	3.0						1	QC
F13	COOL STRAW	FETCO	LEMUS	9" DIA	22"	22"								1	QC
F14	HEATER	FETCO	325-T08L	12 3/4"	17 1/2"	37 1/4"	120/208/1	22.1		1/4"			1/4" WATER LINE REQUIRED, REQUIRES FILTERED WATER	1	QC
F15	TOASTER	CHALMERS	7M-409	11 1/4"	15"	9 3/4"	120	18.1						2	QC
F16	CONDIMENT CENTER	CHEM-FRENCH	CH-164	27"	27"	18"	120/1PH	3.0						1	QC
F17	HOT FOOD DISPENSER	MATCO	3P353S-150	42 1/8"	26 5/8"	33 3/8"	208 / 1 PH	10.0					PROVIDE PLASTIC DIMP PANS AND SUPPORTS	2	QC
F18	WATER REHEATER	A.O. SMITHS	DEL-30				208 / 1 PH							2	QC

RETAIL EQUIPMENT SCHEDULE

R1	LAMINATED UNIT												SIZE TO BE DETERMINED	1	QC
R2	TRANSACTION ISLAND COUNTER	CUSTOM					120/60/1						SEE CASKETWORK DRAWINGS	1	QC
R3	IMPACT UNIT	VERPHONE	DMM-480	8"	8 1/2"	3 1/2"							INSTALLED ON TRANSACTION COUNTERTOP	2	NCR/OC
R4	TRANSACTION ISLAND CASH REGISTER	IBM	4844	21"	16"	31"	110V/60	0.5					INSTALLED IN TRANSACTION COUNTER AND BOLTED TO FLOOR.	1	NCR/OC
R5	TRANSACTION ISLAND SAFE	TOPIC	1ACCE II	21"	16"	31"							BOLT INTO COUNTERTOP	1	QC
R6	TRANSACTION ISLAND LOTTO CASE	CUSTOM											INSTALLED ON TRANSACTION COUNTERTOP	1	QC
R7	TRANSACTION ISLAND LOTTO MACHINE	CUSTOM											INSTALLED IN TRANSACTION COUNTER DRAWER UNIT	1	QC
R8	TRANSACTION COUNTER SCALE	ETC	SL-2300	13 1/2"	13 1/2"								COMBINATION MANUFACTURE SHIPMENT ITEM	2	QC
R9	CREDIT CARD WORKSTATION	COMBETTE MANUFACTURE											LOCATED ON ROOF	1	QC
R10	COMBETTE DISPLAY UNIT	ROYTON		15-0"	36"	54"	208-120/1PH	38						1	QC
R11	AGEE SHELVING UNIT													1	QC
R12	NOT USED													1	QC
R13	ICE CREAM / FROZEN FOOD	MASTER-BLJ	SI-60	71 5/8"	32 3/16"	28 3/4"	115 V	10.3					SELF CONTAINED UNIT	1	QC
R14	ICE CREAM / FROZEN FOOD	MASTER-BLJ	SI-60	71 5/8"	32 3/16"	28 3/4"	115 V	10.3					SUPPLIED BY BANK	1	QC
R15	BANKING MACHINE	SQUARESPACE	1-2										SEE CASKETWORK DRAWINGS	4	QC
R16	BANKING MACHINE	SQUARESPACE	1-2										SEE CASKETWORK DRAWINGS	4	QC
R17	WASHROOM WAXMELER SOA	CUSTOM												1	QC
R18	MANAGER'S OFFICE COUNTER	ERGONOMICS	IGN A7201											1	QC
R19	OFFICE CHAIR	IBM												1	QC
R20	COMPUTER & PRINTER	IBM												1	QC
R21	FINE STRONGARMERS	BOBICK	B-2-55	9 3/4"	11 3/16"	4"							REQUIRE 1/4" WATER LINE, REQUIRES FILTERED WATER AT LOCATIONS	3	QC
R22	PAVER TONE DISPENSER	WAMBERY CLANK	9979B	13 1/2"	8 3/8"	11 1/2"							RECESSED IN COUNTER TOP	1	QC
R23	SOAP DISPENSER	WAMBERY CLANK	9979B	13 1/2"	8 3/8"	11 1/2"							SURFACE MOUNTED	1	QC
R24	PAVER TONE DISPENSER	WAMBERY CLANK	9979B	13 1/2"	8 3/8"	11 1/2"							SURFACE MOUNTED	1	QC
R25	SOAP & LOTION DISPENSERS	WAMBERY CLANK	9182	6 1/2"	4 8/8"	10 4/5"							SURFACE MOUNTED	1	QC

SUPERSEDES ALL PREVIOUS ISSUES
 APPROVED FOR CONSTRUCTION
 PRELIMINARY-NOT FOR CONSTRUCTION
 ISSUED TO: _____
 BY _____ DATE _____

THIS DRAWING MUST BE COORDINATED WITH ALL ARCH. ELEC.
 MECH. PLUMBING CONTRACTORS AND CONSTRUCTION
 CONTRACTOR MUST REPORT ANY DISCREPANCIES TO THE OWNER
 PRIOR TO ORDERING MATERIAL OR BEGINNING OF SERVICES.

ABBREVIATION LEGEND

S/C	SPRING 36
E/C	ELECTRICAL CONTRACTOR
M/C	MECHANICAL CONTRACTOR
P/C	PLUMBING CONTRACTOR
E/C	ELECTRICAL CONTRACTOR
S/S	STAINLESS STEEL
F.C.	FRATURE CONTRACTOR

REFERENCE DRAWINGS

DRAWING	DATE	TITLE

REVOLUTIONS

REV	DATE	BY	REASON

AMES A/E
 ARCHITECTS & ENGINEERS
 Portsmouth Office
 115 Main St., PO Box 2610
 Portsmouth, NH 03810
 T. 603.427.5100

IRVING OIL

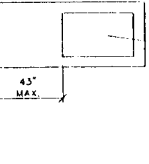
PORTLAND, ME
 COMMERCIAL STREET
 EQUIPMENT SCHEDULE

PROJECT: _____ DRAWING NO: **A5** REVISION: **A**
 SCALE: _____ APPROVED BY: _____
 DATE: **5/02/05** PROJECT NO.: _____
 CADD FILE CONTROLLING NUMBER: **HW 031200**

DOOR OR OPENING NUMBER	DOORS				FRAMES		DOOR STYLE	HARDW SET N:	DOOR SWING	REMARKS
	MAT.	FIN.	W	H	MAT.	FIN.				
101	S.C.	2"	5'-8"	1'-3/4"	S.S.	PH.	A	3	R/L	
102										
103										
104										
105										
106										
107										
108										
109										
110										

ROOM NO.	ROOM NAME	FLOOR		BASE	NORTH WALL		SOUTH WALL		WEST WALL		EAST WALL		CEILING	
		MAT.	FIN.		MAT.	FIN.	MAT.	FIN.	MAT.	FIN.	MAT.	FIN.	MAT.	FIN.
101	ENTRY / EXIT													
102	RETAIL AREA													
103	TRANSACTION AREA													
104	PREP AREA													
105	CORRIDOR													
106	WASHROOM													
107	RECEIVING													
108	MANAGER'S OFFICE													
109	WALK-IN COOLER													
110	ELEC RM													

NOTE: 1) HARDWARE & SEALS TO BE APPLIED TO ALL EXPOSED CONCRETE AREAS.
 2) FILL ALL SAW CUT JOINTS, CHISEL AND GRIND TO MATCH ADJACENT WALLS. VERIFY COLOR W/ OWNER PRIOR TO COMPLETING WORK.
 3) DEMAND THE SHOP DRAWING FOR FLOOR TILE CUT TO 4" W 6" CUT SIDE DOWN.



A
DOOR STILES

ABBREVIATION	DESCRIPTION
AC	ACRYLIC
CMC	CONCRETE
H.M.	HOLLOW METAL
AL	ALUMINUM
CA	CLEAR ANODIZED ALUMINUM
PG	PAINT GRADE DOOR
PH	PAINT
ST.G.	STURBOROUGH SANDING SYSTEM
EXT.	EXTENSION WALL
NSI	INSULATION
NSI	5/8" GYPSUM WALLBOARD
DB2	5/8" TYPE 4 GYPSUM WALLBOARD
DB3	MOSTURE RESISTANT GYPSUM WALLBOARD
TBB	TIE BRACKER BOARD
RT	FLOOR TILE
RT	FLOOR TILE
RT	WOOD
AC.T.	ACOUSTICAL CEILING TILE
P.S.	PRESSED STEEL FRAME
N.A.	NOT APPLICABLE
S.C.	SOLID CORE WOOD
N.A.L.	NON-HAZARDOUS CEILING TILE
FRP	FIBER REINFORCED PANELS

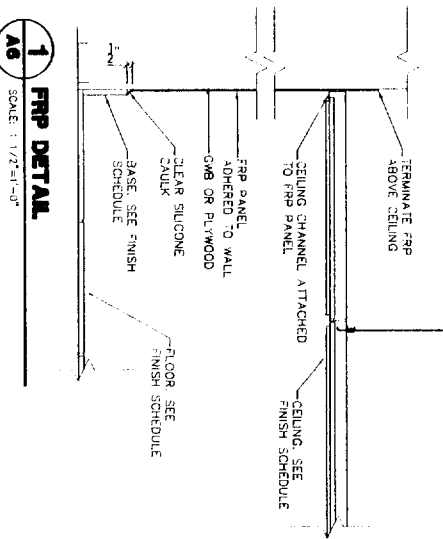
HARDWARE SCHEDULE

SET	DESCRIPTION	MANUFACTURER
SET 1	3 ONLY BUTTS F8B179 4-1/2" x 4" x 3/8" 1 ONLY KICK PLATE K10A 12" x 3" x 3/8" 1 ONLY DOOR SWEEP W-24 x 3" x 3/8" 1 ONLY WEATHER STRIPPING W-20" (INSTALL BEFORE FRAME SET & DOOR CLOSERS)	STANLEY STANLEY METAL KN CHROMER NATIONAL GUARD
SET 2	3 ONLY BUTTS F8B179 4-1/2" x 4" x 3/8" 1 ONLY KICK PLATE K10A 12" x 3" x 3/8" 1 ONLY DOOR SWEEP W-24 x 3" x 3/8" 1 ONLY WEATHER STRIPPING W-20" (INSTALL BEFORE FRAME SET & DOOR CLOSERS)	STANLEY STANLEY METAL KN CHROMER NATIONAL GUARD
SET 3	1 ONLY LEVER TYPE LOCK SET 24-28 55004-KL C280 1 ONLY DOOR CLOSER 1431-140 FN 1 ONLY KICK PLATE 12" x 3" x 3/8" 1 ONLY WEATHER STRIPPING W-20" (INSTALL BEFORE FRAME SET & DOOR CLOSERS)	STANLEY STANLEY METAL KN CHROMER NATIONAL GUARD
SET 4	1 ONLY LEVER TYPE LOCK SET 24-28 55004-KL C280 1 ONLY DOOR CLOSER 1431-140 FN 1 ONLY KICK PLATE 12" x 3" x 3/8" 1 ONLY WEATHER STRIPPING W-20" (INSTALL BEFORE FRAME SET & DOOR CLOSERS)	STANLEY STANLEY METAL KN CHROMER NATIONAL GUARD
SET 5	1 ONLY LEVER TYPE LOCK SET 24-28 55004-KL C280 1 ONLY DOOR CLOSER 1431-140 FN 1 ONLY KICK PLATE 12" x 3" x 3/8" 1 ONLY WEATHER STRIPPING W-20" (INSTALL BEFORE FRAME SET & DOOR CLOSERS)	STANLEY STANLEY METAL KN CHROMER NATIONAL GUARD
SET 6	1 ONLY LEVER TYPE LOCK SET 24-28 55004-KL C280 1 ONLY DOOR CLOSER 1431-140 FN 1 ONLY KICK PLATE 12" x 3" x 3/8" 1 ONLY WEATHER STRIPPING W-20" (INSTALL BEFORE FRAME SET & DOOR CLOSERS)	STANLEY STANLEY METAL KN CHROMER NATIONAL GUARD

NOTES:
 1) ALL GLASS TO BE INSTALLED SO THAT THEY CANNOT BE SEEN FROM FRONT OF DOOR.

FINISHES MATERIAL SCHEDULE

SYMBOL	DESCRIPTION	MANUFACTURER	SIZE	COLOR	NUMBER	REMARKS
FLOORING	FIELD TILE - PORCELAIN	OLYMPIA (TRAVLER)	12" x 12"	SPALE		SUPPLIED BY DOMING TILE (800-759-1414)
	TILE - BASE	OLYMPIA (DIAMANTE)	4" x 8"	SPALE		
	WOOD BASE - INVL	JOHNSONITE	4"	WANAITE		
	WOOD FLOOR	ANTICO	12" x 12" x 1/8"	ANTIQUE WOOD	483-18	INSTALL OVER FIELD TILE
	CLEAR SEALER	JOHNSONITE	12" x 12" x 1/8"	SPRINKLE WHITE	51558	
	SEE SPEC			SEE SPEC		
	TOE KICK COVE BASE	JOHNSONITE	12" x 12" x 1/8"	STONE BEIGE	57005	SUPPLIED & INSTALLED ON CABINET TOE KICK BY FLOORING INSTALLER
	WALL COVERING					
	CERAMIC WALL TILE	OLYMPIA (WALLE LEAF)	4 1/4" x 4 1/4"	AMERICAN STD. BONE	44820	
	PAINT FINISH	BEIJAMIN MOORE		LONDON BRICK - BEW GLOSS	2019-50	PAINT COLOR TO BE CONFIRMED BY IOC PRIOR TO APPLICATION
	CEILING PAINT	BEIJAMIN MOORE		CEILING WHITE		PAINT ALL EXPOSED STRUCTURE
	FIBERGLASS REINFORCED PANELS	KAL-LITE	4 x 10 SHEETS	ALUMINO		C/W ALL ACCESSORIES AND TRIM PIECES SEE DETAIL 1/414
	WALL PROTECTION SYSTEM	KORODIUM	4x8 SHEETS	YELLOW	7	C/W ALL ACCESSORIES AND TRIM PIECES COLOR TO BE CONFIRMED BY IOC PRIOR TO APPLICATION



1 FRP DETAIL
 SCALE: 1/2"=1'-0"

SUPERSEDES ALL PREVIOUS ISSUES
 APPROVED FOR CONSTRUCTION
 PRELIMINARY-NOT FOR CONSTRUCTION
 ISSUED TO: _____
 BY: _____ DATE: _____

REFERENCE DRAWINGS

REVISIONS

AMES A/E
 ARCHITECTS & ENGINEERS
 Bangor Office
 115 Main St., Box 2810
 Bangor, ME 04402-2810
 F: 207-947-0153

Portland Office
 400 The Hill, Suite 2
 Portsmouth, NH 03810
 F: 603-421-5400

IRVING OIL

SCALE: R/M
 DATE: 5/02/05
 PROJECT: PORTLAND, ME COMMERCIAL STREET

IRVING OIL
 PORTLAND, ME
 COMMERCIAL STREET

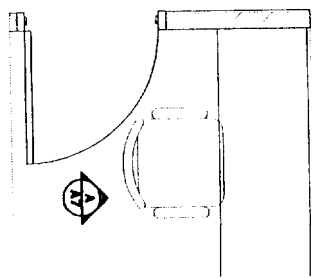
SHEET TITLE: DOOR AND FINISH SCHEDULES

PROJECT: PORTLAND, ME COMMERCIAL STREET

SCALE: A6

DATE: 5/02/05

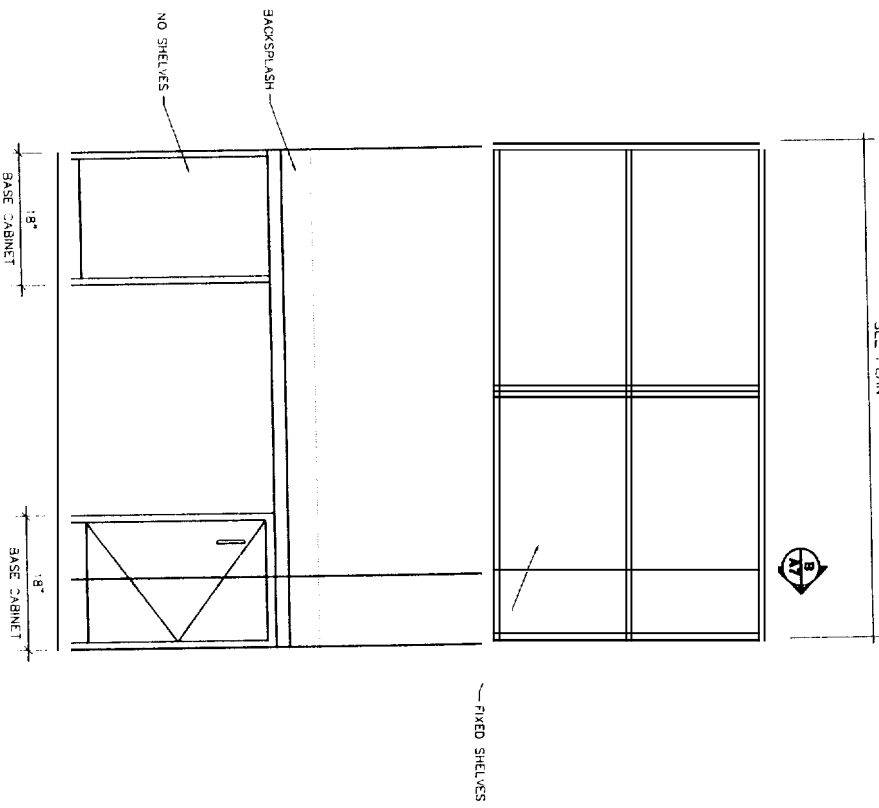
COMPANY SUPERVISOR AND CONTRACTOR TO VERIFY ALL DIMENSIONS ON WORK OR AT SITE AND SIGN DRAWING IS THE PROPERTY OF IRVING OIL, LTD. AND SHALL BE RETURNED IN COMPLETE CONDITION TO IRVING OIL, LTD.



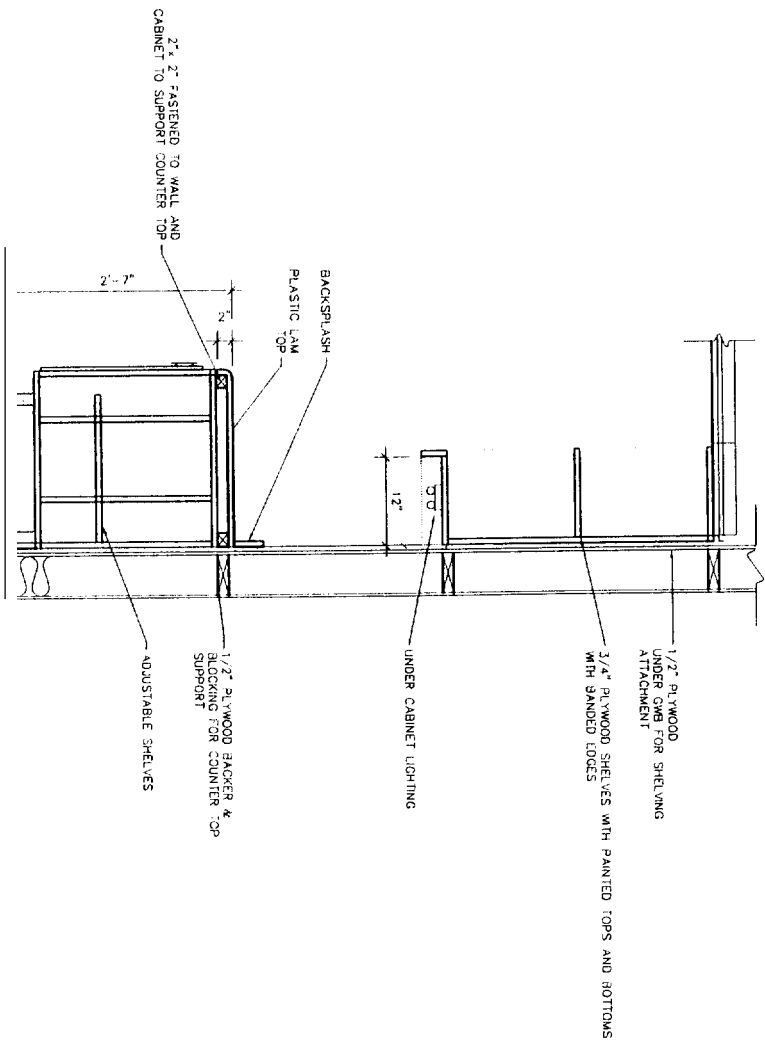
OFFICE PLAN
 1/2" = 1'-0"

NOTE: MILLWORK SHOWN ON THIS DRAWING WILL BE PURCHASED BY YOU AND INSTALLED BY THE MILLWORK MANUFACTURER.

SEE PLAN



ELEVATION
 1/2" = 1'-0"



SECTION THRU CABINETRY
 1/2" = 1'-0"

- SUPERSEDES ALL PREVIOUS ISSUES
 - APPROVED FOR CONSTRUCTION
 - PRELIMINARY--NOT FOR CONSTRUCTION
 - ISSUED TO: _____
- BY _____ DATE _____

DATE	BY	REVISION

DATE	BY	REVISION

AMES A/E
 ARCHITECTS & ENGINEERS
 Bangor Office
 115 Main St. PO Box 2610
 Bangor, ME 04402-2610
 T: 207/947-0153

Portland Office
 400 The Hill, Suite 2
 Portsmouth, NH 03810
 T: 603-427-3400

IRVING

DATE FILE: 05/02/05
 FILED: May 03 2005

DRAWN BY:	DESIGNED BY:
SCALE:	APPROVED BY:
AS SHOWN	
DATE:	PROPERTY NO.:
5/02/05	

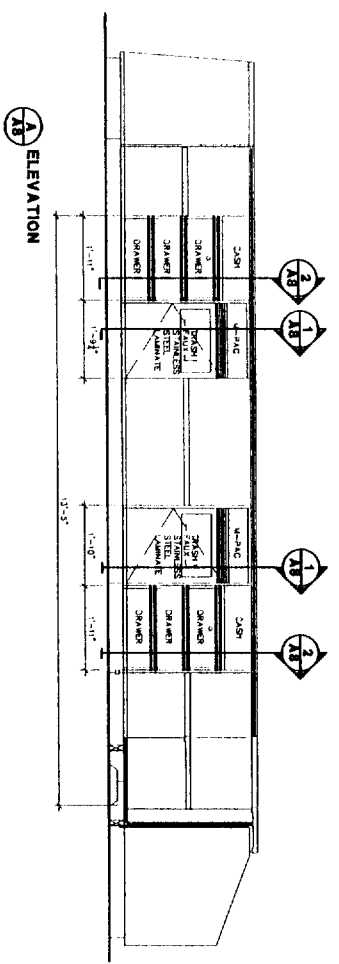
IRVING OIL

PROJECT:
PORTLAND, ME
COMMERCIAL STREET

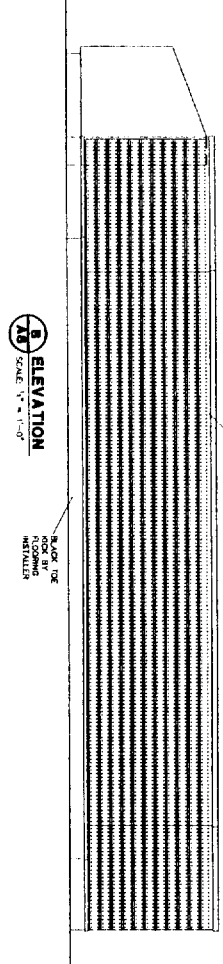
SHEET TITLE:
MANAGER'S OFFICE
ELEVATIONS AND DETAILS

PROJECT: _____ DRAWING NO: **A7** REVISION: **A**

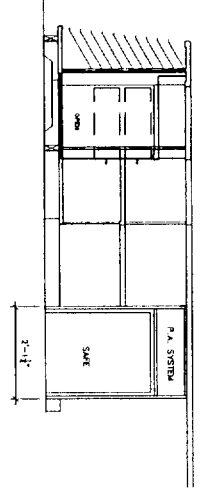
COMPLETE SUPERVISION AND CONTRACTOR TO VERIFY ALL DIMENSIONS ON WORK ON THE SITE. THIS DRAWING IS THE PROPERTY OF IRVING OIL LTD. AND SHALL BE RETURNED BY COMPLETION OF WORK.



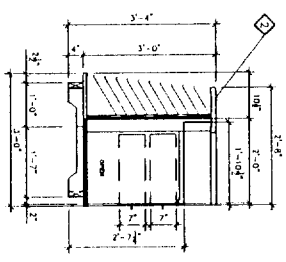
A-A ELEVATION
 SCALE: 1" = 1'-0"



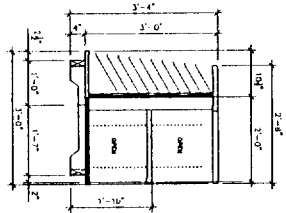
B-B ELEVATION
 SCALE: 1" = 1'-0"



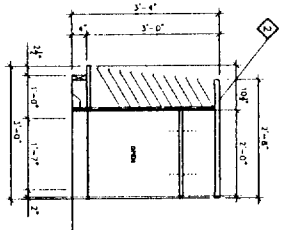
C-C ELEVATION
 SCALE: 1" = 1'-0"



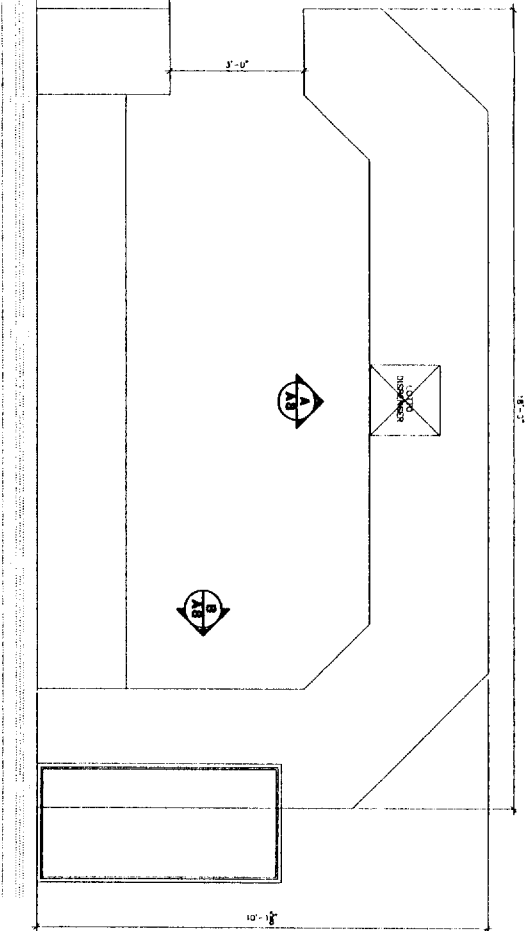
A-A SECTION
 SCALE: 1" = 1'-0"



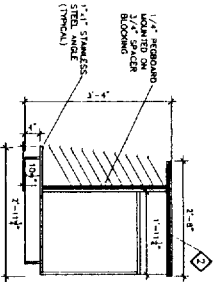
B-B SECTION
 SCALE: 1" = 1'-0"



C-C SECTION
 SCALE: 1" = 1'-0"



TRANSACTION COUNTER PLAN / B
 SCALE: 1" = 1'-0"

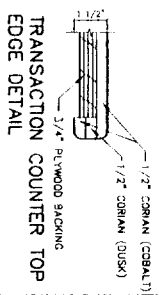


D-D SECTION
 SCALE: 1" = 1'-0"

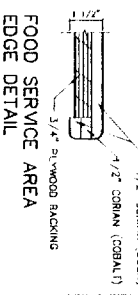
NOTE: MILLWORK SHOWN ON THIS DRAWING WILL BE PURCHASED BY IOC AND INSTALLED BY THE MILLWORK MANUFACTURER.
 NOTE: ONE PORTION OF THE CHECKOUT COUNTER MUST BE 35" MAX. HEIGHT FOR A WIDTH OF 35" MIN FOR ADA COMPLIANCE.

FINISHES MATERIAL SCHEDULE

CABINET COLORS	DESCRIPTION	MAN.	COLOR	NUMBER	REMARKS
◆	TRANSACTION COUNTER TOP	COBAIN	DIERRA DUSK		EDGE NOTE: SEE DETAIL THIS PAGE
◆	TRANSACTION - COUNTER TOP	COBAIN	COBALT	# 1555	EDGE NOTE: SEE DETAIL THIS PAGE
◆	SELF-SERVICE RECESS-FACE			# 1555	3/4" WOP UNIT C/W SANDERLIN P/NK
◆	SELF-SERVICE BODY			# 1555	3/4" WOP UNIT
◆	NOT USED				
◆	TRANSACTION BODY AND SHELVING			# 1555	3/4" WOP UNIT
◆	TRANSACTION SHELF EDGE STRIP	COBAIN	SEBRA DUSK		TO MATCH
◆	NOT USED				
◆	NOT USED				
◆	MANAGER OFFICE COUNTERTOP	ARBORITE	ARBITE	S492	
◆	MANAGER OFFICE CABINETRY FINISH	BEN MOORE	SANDERLIN	# 1555	3/4" WOP UNIT
◆	PREP. COUNTERTOP BASE WOP W/ SANDERLIN P/NK				
◆	PREP. COUNTERS				



TRANSACTION COUNTER TOP EDGE DETAIL



FOOD SERVICE AREA EDGE DETAIL

- SUPERSEDES ALL PREVIOUS ISSUES
- APPROVED FOR CONSTRUCTION
- PRELIMINARY-NOT FOR CONSTRUCTION
- ISSUED TO: _____

BY _____ DATE _____

REFERENCE DRAWINGS

REVISIONS

AMES A/E
 ARCHITECTS & ENGINEERS
 Bangor Office
 115 Main St. PO Box 2610
 Bangor, ME 04402-2610
 T: 207-947-0153

Portland Office
 400 The Hill, Suite 2
 Portland, NH 03810
 T: 603-427-5400

IRVING
 SCALE: AS SHOWN
 DATE: 5/02/05
 PROJECT NO.: _____

IRVING OIL

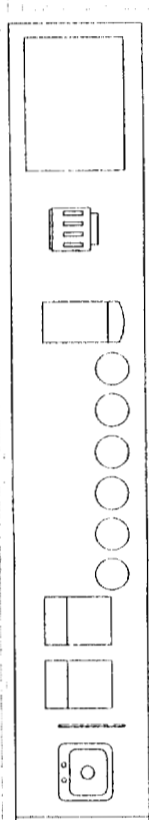
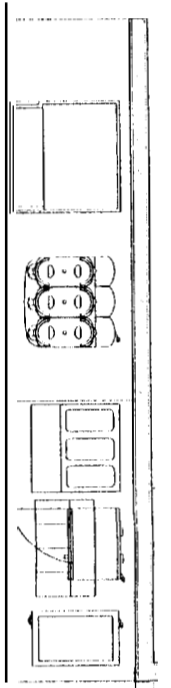
PORTLAND, ME
COMMERCIAL STREET

TRANSACTION ISLAND
PLAN AND DETAILS

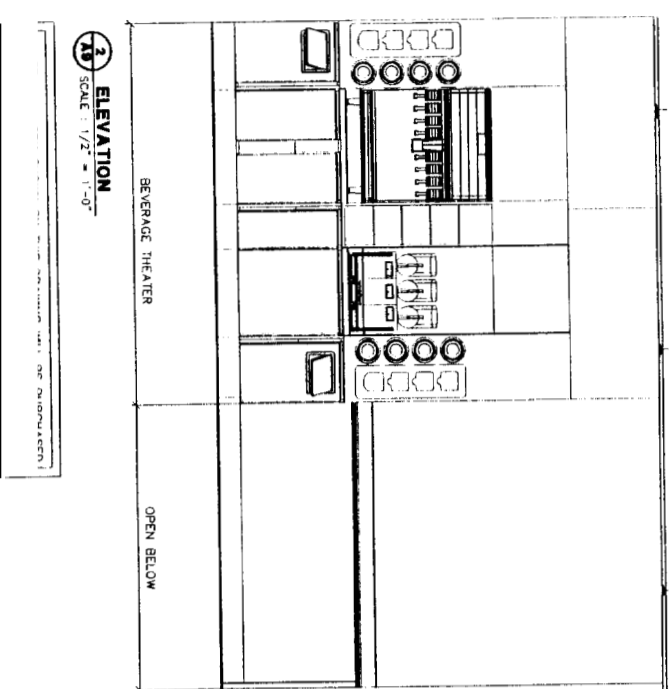
PROJECT: _____ DRAWING NO: **A8** REVISION: **A**

CONTRACTOR: _____

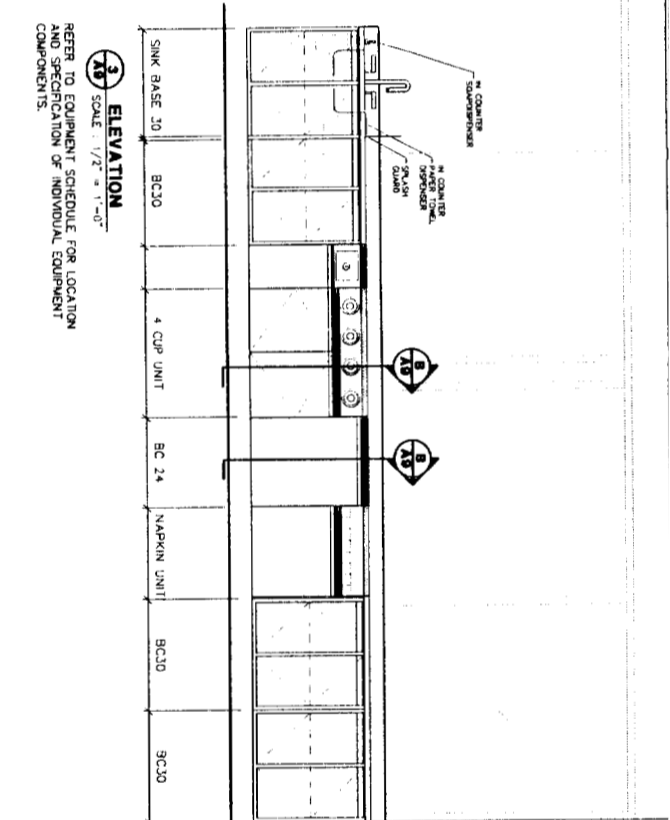
CONTRACT ADMINISTRATION AND CONSTRUCTION TO VERIFY ALL DIMENSIONS OF WORK ON SITE. THE DRAWING IS THE PROPERTY OF IRVING OIL, LTD. AND SHALL BE RETURNED ON COMPLETION OF WORK.



1B FOOD SERVICE AREA PLAN VIEW
SCALE: 1/2" = 1'-0"

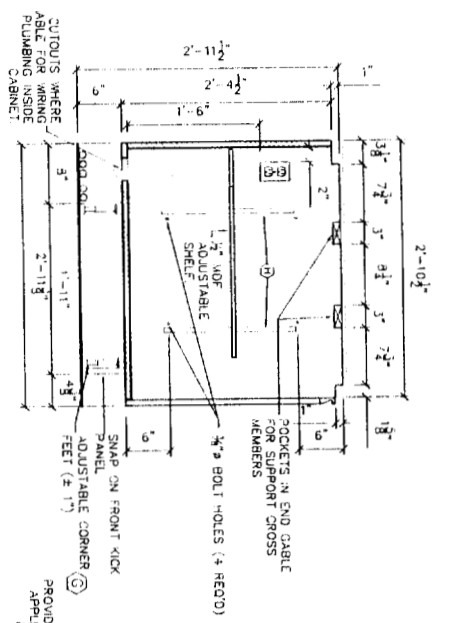


2 ELEVATION
SCALE: 1/2" = 1'-0"

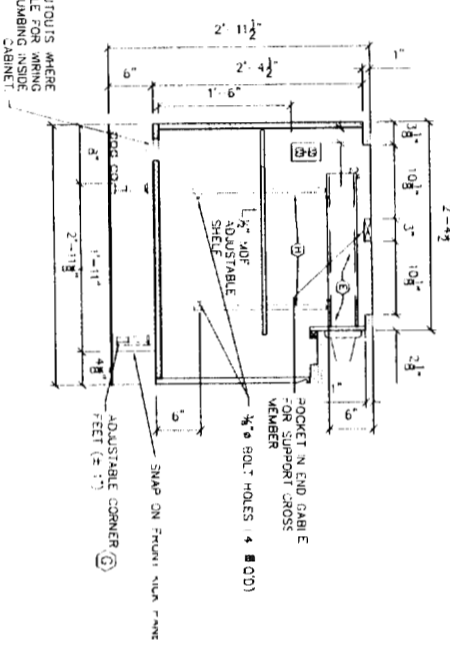


3 ELEVATION
SCALE: 1/2" = 1'-0"

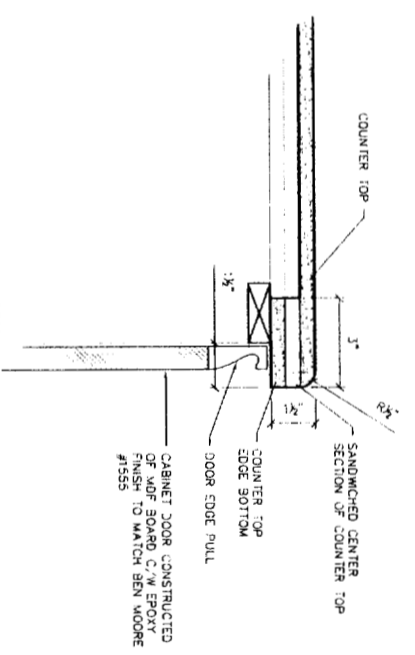
REFER TO EQUIPMENT SCHEDULE FOR LOCATION AND SPECIFICATION OF INDIVIDUAL EQUIPMENT COMPONENTS.



A-A SECTION
SCALE: 1" = 1'-0"



B-B SECTION
SCALE: 1" = 1'-0"



C-C COUNTER TOP SECTION AND FRONT
SCALE: 1" = 1'-0"

- SUPERSEDES ALL PREVIOUS ISSUES
- APPROVED FOR CONSTRUCTION
- PRELIMINARY-NOT FOR CONSTRUCTION
- ISSUED TO: _____
- BY: _____ DATE: _____

DATE	BY	REVISIONS

DATE	BY	REVISIONS

DATE	BY	REVISIONS

AMES A/E
ARCHITECTS & ENGINEERS
Bangor Office
115 Main St., PO Box 2610
Bangor, ME 04402-2610
T: 207.947.0153

Portland Office
400 The Hill, Suite 2
Portland, ME 04103
T: 603.427.5400

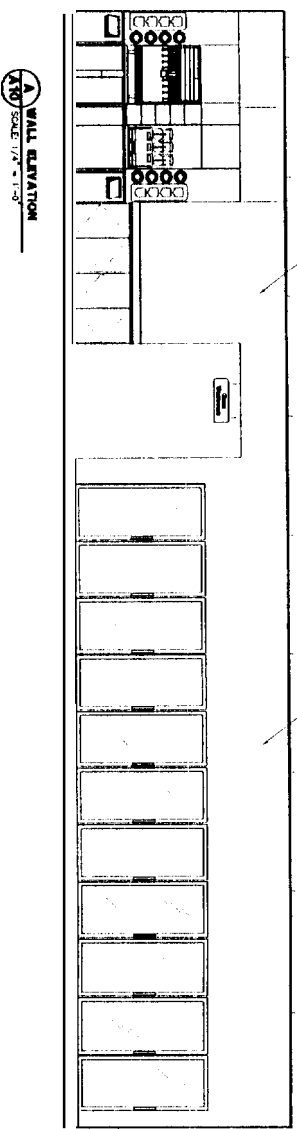
DATE: 5/02/05	SCALE: AS SHOWN
PROJECT: PORTLAND, ME COMMERCIAL STREET	DATE: 5/02/05
SHEET TITLE: FOOD SERVICE AREA PLAN AND DETAILS	SCALE: AS SHOWN

IRVING OIL

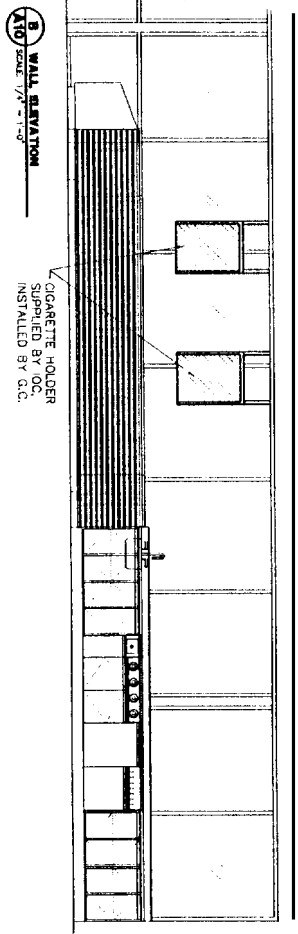
PORTLAND, ME
COMMERCIAL STREET
FOOD SERVICE AREA
PLAN AND DETAILS

PROJECT: PORTLAND, ME COMMERCIAL STREET
SHEET TITLE: FOOD SERVICE AREA PLAN AND DETAILS
SCALE: AS SHOWN

WASHROOM AND
 SIGNAGE TO BE
 INSTALLED BY
 O.C.



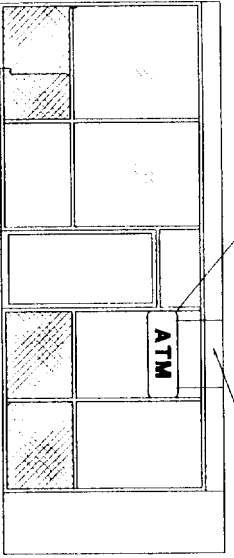
A10 WALL ELEVATION
 SCALE: 1/8" = 1'-0"



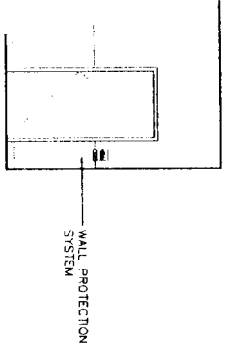
B10 WALL ELEVATION
 SCALE: 1/8" = 1'-0"

CIGARETTE HOLDER
 SUPPLIED BY O.C.
 INSTALLED BY O.C.

SIGN SUPPLIED BY O.C.
 INSTALLED BY O.C.

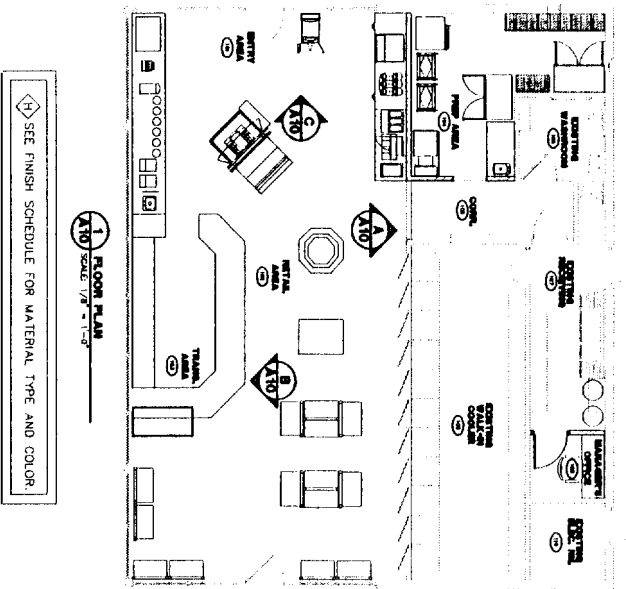


C10 WALL ELEVATION
 SCALE: 1/8" = 1'-0"



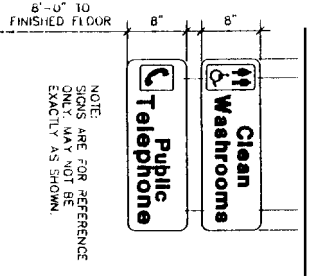
A10 WASHROOM SIGN ELEVATION
 SCALE: 1/8" = 1'-0"

WALL PROTECTION
 SYSTEM



A10 FLOOR PLAN
 SCALE: 1/8" = 1'-0"

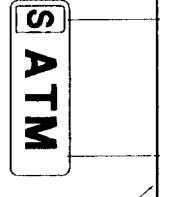
SEE FINISH SCHEDULE FOR MATERIAL TYPE AND COLOR.



A10 WASHROOM SIGN ELEVATION
 SCALE: 1/8" = 1'-0"

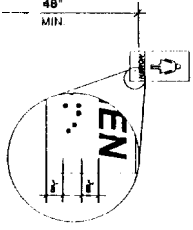
NOTE:
 SIGNS ARE FOR REFERENCE
 ONLY. MAY NOT BE
 EXACTLY AS SHOWN.

6'-0" TO
 FINISHED FLOOR



A10 ATM MACHINE SIGN
 SCALE: 1/8" = 1'-0"

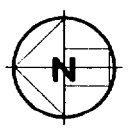
BOTTOM OF SUSPENDED
 CEILING



A10 SIGN DISTRIBUTION LETTER
 SCALE: 1/8" = 1'-0"

- SUPERSEDES ALL PREVIOUS ISSUES
- APPROVED FOR CONSTRUCTION
- PRELIMINARY-NOT FOR CONSTRUCTION
- ISSUED TO: _____

BY _____ DATE _____



Const. North

NO.	DATE	BY	REVISIONS

AMES A/E
 ARCHITECTS & ENGINEERS
 Bangor Office
 115 Main St., PO Box 2610
 Bangor, ME 04402-2610
 T: 207/947-0153

Portland Office
 400 The Hill, Suite 2
 Portland, ME 04103
 T: 803-427-5100

IRVING

DRAWN BY:	CHECKED BY:
SCALE:	APPROVED BY:
AS SHOWN	
DATE:	PROJECT NO.:
5/02/05	
CAD FILE DISTRIBUTION:	LETTER: Rev. 01/2005

IRVING OIL

PROJECT:
PORTLAND, ME
COMMERCIAL STREET

SHEET TITLE:
RETAIL AREA ELEVATIONS
AND DETAILS

PROJECT:	DRAWING NO.:	REVISION:
	A10	A

GENERAL SUPPLIER AND CONTRACTOR TO VERIFY ALL MEASUREMENTS ON SITE
 AT ALL TIMES. THE DRAWING IS THE PROPERTY OF IRVING OIL, LTD. AND SHALL BE
 RETURNED TO IRVING OIL, LTD. UPON COMPLETION OF THE PROJECT.

INDEX TO SPECIFICATION

INDEX TO SPECIFICATION

SECTIONS 00 - 00 - ROOMING AND CONTRACTING REQUIREMENTS

GENERAL NOTES

GENERAL NOTES

GENERAL NOTES

GENERAL NOTES

GENERAL NOTES

GENERAL NOTES

GENERAL NOTES

GENERAL NOTES

GENERAL NOTES

GENERAL NOTES

GENERAL NOTES

GENERAL NOTES

GENERAL NOTES

GENERAL NOTES

GENERAL NOTES

GENERAL NOTES

GENERAL NOTES

GENERAL NOTES

GENERAL NOTES

GENERAL NOTES

GENERAL NOTES

GENERAL NOTES

GENERAL NOTES

GENERAL NOTES

GENERAL NOTES

GENERAL NOTES

GENERAL NOTES

GENERAL NOTES

GENERAL NOTES

GENERAL NOTES

GENERAL NOTES

GENERAL NOTES

GENERAL NOTES

GENERAL NOTES

GENERAL NOTES

GENERAL NOTES

GENERAL NOTES

GENERAL NOTES

GENERAL NOTES

GENERAL NOTES

GENERAL NOTES

GENERAL NOTES

GENERAL NOTES

GENERAL NOTES

GENERAL NOTES

GENERAL NOTES

GENERAL NOTES

GENERAL NOTES

GENERAL NOTES

GENERAL NOTES

GENERAL NOTES

GENERAL NOTES

GENERAL NOTES

GENERAL NOTES

GENERAL NOTES

GENERAL NOTES

GENERAL NOTES

GENERAL NOTES

GENERAL NOTES

GENERAL NOTES

GENERAL NOTES

GENERAL NOTES

GENERAL NOTES

GENERAL NOTES

GENERAL NOTES

GENERAL NOTES

GENERAL NOTES

GENERAL NOTES

GENERAL NOTES

GENERAL NOTES

GENERAL NOTES

GENERAL NOTES

GENERAL NOTES

GENERAL NOTES

GENERAL NOTES

GENERAL NOTES

GENERAL NOTES

GENERAL NOTES

GENERAL NOTES

GENERAL NOTES

GENERAL NOTES

GENERAL NOTES

GENERAL NOTES

GENERAL NOTES

GENERAL NOTES

GENERAL NOTES

GENERAL NOTES

GENERAL NOTES

GENERAL NOTES

GENERAL NOTES

GENERAL NOTES

GENERAL NOTES

GENERAL NOTES

DIVISION 03 - METALS
SECTION 0310 - STRUCTURAL STEEL & STEEL JOISTS
 Refer to Structural Drawings
 Refer to Structural Drawings

DIVISION 05 - METAL FABRICATIONS
 1. Shop drawings shall show dimensions, materials, thicknesses, finishes, connections, and fasteners. Shop drawings shall indicate a primary order, including all required details, quantities and quantities, and shall be prepared by a Structural Steel fabricator with experience in the fabrication of metal structures. Shop drawings shall be prepared by the contractor and shall show details for the installation of the metal fabrications.
 2. Steel sections and plates, to ASTM A 36/A 36M Grade 50W.
 3. Shop drawings for steel connections to be shown. AISC 358, 360, 365, 370, 375, 380, 385, 390, 395, 400, 405, 410, 415, 420, 425, 430, 435, 440, 445, 450, 455, 460, 465, 470, 475, 480, 485, 490, 495, 500, 505, 510, 515, 520, 525, 530, 535, 540, 545, 550, 555, 560, 565, 570, 575, 580, 585, 590, 595, 600, 605, 610, 615, 620, 625, 630, 635, 640, 645, 650, 655, 660, 665, 670, 675, 680, 685, 690, 695, 700, 705, 710, 715, 720, 725, 730, 735, 740, 745, 750, 755, 760, 765, 770, 775, 780, 785, 790, 795, 800, 805, 810, 815, 820, 825, 830, 835, 840, 845, 850, 855, 860, 865, 870, 875, 880, 885, 890, 895, 900, 905, 910, 915, 920, 925, 930, 935, 940, 945, 950, 955, 960, 965, 970, 975, 980, 985, 990, 995, 1000, 1005, 1010, 1015, 1020, 1025, 1030, 1035, 1040, 1045, 1050, 1055, 1060, 1065, 1070, 1075, 1080, 1085, 1090, 1095, 1100, 1105, 1110, 1115, 1120, 1125, 1130, 1135, 1140, 1145, 1150, 1155, 1160, 1165, 1170, 1175, 1180, 1185, 1190, 1195, 1200, 1205, 1210, 1215, 1220, 1225, 1230, 1235, 1240, 1245, 1250, 1255, 1260, 1265, 1270, 1275, 1280, 1285, 1290, 1295, 1300, 1305, 1310, 1315, 1320, 1325, 1330, 1335, 1340, 1345, 1350, 1355, 1360, 1365, 1370, 1375, 1380, 1385, 1390, 1395, 1400, 1405, 1410, 1415, 1420, 1425, 1430, 1435, 1440, 1445, 1450, 1455, 1460, 1465, 1470, 1475, 1480, 1485, 1490, 1495, 1500, 1505, 1510, 1515, 1520, 1525, 1530, 1535, 1540, 1545, 1550, 1555, 1560, 1565, 1570, 1575, 1580, 1585, 1590, 1595, 1600, 1605, 1610, 1615, 1620, 1625, 1630, 1635, 1640, 1645, 1650, 1655, 1660, 1665, 1670, 1675, 1680, 1685, 1690, 1695, 1700, 1705, 1710, 1715, 1720, 1725, 1730, 1735, 1740, 1745, 1750, 1755, 1760, 1765, 1770, 1775, 1780, 1785, 1790, 1795, 1800, 1805, 1810, 1815, 1820, 1825, 1830, 1835, 1840, 1845, 1850, 1855, 1860, 1865, 1870, 1875, 1880, 1885, 1890, 1895, 1900, 1905, 1910, 1915, 1920, 1925, 1930, 1935, 1940, 1945, 1950, 1955, 1960, 1965, 1970, 1975, 1980, 1985, 1990, 1995, 2000, 2005, 2010, 2015, 2020, 2025, 2030, 2035, 2040, 2045, 2050, 2055, 2060, 2065, 2070, 2075, 2080, 2085, 2090, 2095, 2100, 2105, 2110, 2115, 2120, 2125, 2130, 2135, 2140, 2145, 2150, 2155, 2160, 2165, 2170, 2175, 2180, 2185, 2190, 2195, 2200, 2205, 2210, 2215, 2220, 2225, 2230, 2235, 2240, 2245, 2250, 2255, 2260, 2265, 2270, 2275, 2280, 2285, 2290, 2295, 2300, 2305, 2310, 2315, 2320, 2325, 2330, 2335, 2340, 2345, 2350, 2355, 2360, 2365, 2370, 2375, 2380, 2385, 2390, 2395, 2400, 2405, 2410, 2415, 2420, 2425, 2430, 2435, 2440, 2445, 2450, 2455, 2460, 2465, 2470, 2475, 2480, 2485, 2490, 2495, 2500, 2505, 2510, 2515, 2520, 2525, 2530, 2535, 2540, 2545, 2550, 2555, 2560, 2565, 2570, 2575, 2580, 2585, 2590, 2595, 2600, 2605, 2610, 2615, 2620, 2625, 2630, 2635, 2640, 2645, 2650, 2655, 2660, 2665, 2670, 2675, 2680, 2685, 2690, 2695, 2700, 2705, 2710, 2715, 2720, 2725, 2730, 2735, 2740, 2745, 2750, 2755, 2760, 2765, 2770, 2775, 2780, 2785, 2790, 2795, 2800, 2805, 2810, 2815, 2820, 2825, 2830, 2835, 2840, 2845, 2850, 2855, 2860, 2865, 2870, 2875, 2880, 2885, 2890, 2895, 2900, 2905, 2910, 2915, 2920, 2925, 2930, 2935, 2940, 2945, 2950, 2955, 2960, 2965, 2970, 2975, 2980, 2985, 2990, 2995, 3000, 3005, 3010, 3015, 3020, 3025, 3030, 3035, 3040, 3045, 3050, 3055, 3060, 3065, 3070, 3075, 3080, 3085, 3090, 3095, 3100, 3105, 3110, 3115, 3120, 3125, 3130, 3135, 3140, 3145, 3150, 3155, 3160, 3165, 3170, 3175, 3180, 3185, 3190, 3195, 3200, 3205, 3210, 3215, 3220, 3225, 3230, 3235, 3240, 3245, 3250, 3255, 3260, 3265, 3270, 3275, 3280, 3285, 3290, 3295, 3300, 3305, 3310, 3315, 3320, 3325, 3330, 3335, 3340, 3345, 3350, 3355, 3360, 3365, 3370, 3375, 3380, 3385, 3390, 3395, 3400, 3405, 3410, 3415, 3420, 3425, 3430, 3435, 3440, 3445, 3450, 3455, 3460, 3465, 3470, 3475, 3480, 3485, 3490, 3495, 3500, 3505, 3510, 3515, 3520, 3525, 3530, 3535, 3540, 3545, 3550, 3555, 3560, 3565, 3570, 3575, 3580, 3585, 3590, 3595, 3600, 3605, 3610, 3615, 3620, 3625, 3630, 3635, 3640, 3645, 3650, 3655, 3660, 3665, 3670, 3675, 3680, 3685, 3690, 3695, 3700, 3705, 3710, 3715, 3720, 3725, 3730, 3735, 3740, 3745, 3750, 3755, 3760, 3765, 3770, 3775, 3780, 3785, 3790, 3795, 3800, 3805, 3810, 3815, 3820, 3825, 3830, 3835, 3840, 3845, 3850, 3855, 3860, 3865, 3870, 3875, 3880, 3885, 3890, 3895, 3900, 3905, 3910, 3915, 3920, 3925, 3930, 3935, 3940, 3945, 3950, 3955, 3960, 3965, 3970, 3975, 3980, 3985, 3990, 3995, 4000, 4005, 4010, 4015, 4020, 4025, 4030, 4035, 4040, 4045, 4050, 4055, 4060, 4065, 4070, 4075, 4080, 4085, 4090, 4095, 4100, 4105, 4110, 4115, 4120, 4125, 4130, 4135, 4140, 4145, 4150, 4155, 4160, 4165, 4170, 4175, 4180, 4185, 4190, 4195, 4200, 4205, 4210, 4215, 4220, 4225, 4230, 4235, 4240, 4245, 4250, 4255, 4260, 4265, 4270, 4275, 4280, 4285, 4290, 4295, 4300, 4305, 4310, 4315, 4320, 4325, 4330, 4335, 4340, 4345, 4350, 4355, 4360, 4365, 4370, 4375, 4380, 4385, 4390, 4395, 4400, 4405, 4410, 4415, 4420, 4425, 4430, 4435, 4440, 4445, 4450, 4455, 4460, 4465, 4470, 4475, 4480, 4485, 4490, 4495, 4500, 4505, 4510, 4515, 4520, 4525, 4530, 4535, 4540, 4545, 4550, 4555, 4560, 4565, 4570, 4575, 4580, 4585, 4590, 4595, 4600, 4605, 4610, 4615, 4620, 4625, 4630, 4635, 4640, 4645, 4650, 4655, 4660, 4665, 4670, 4675, 4680, 4685, 4690, 4695, 4700, 4705, 4710, 4715, 4720, 4725, 4730, 4735, 4740, 4745, 4750, 4755, 4760, 4765, 4770, 4775, 4780, 4785, 4790, 4795, 4800, 4805, 4810, 4815, 4820, 4825, 4830, 4835, 4840, 4845, 4850, 4855, 4860, 4865, 4870, 4875, 4880, 4885, 4890, 4895, 4900, 4905, 4910, 4915, 4920, 4925, 4930, 4935, 4940, 4945, 4950, 4955, 4960, 4965, 4970, 4975, 4980, 4985, 4990, 4995, 5000, 5005, 5010, 5015, 5020, 5025, 5030, 5035, 5040, 5045, 5050, 5055, 5060, 5065, 5070, 5075, 5080, 5085, 5090, 5095, 5100, 5105, 5110, 5115, 5120, 5125, 5130, 5135, 5140, 5145, 5150, 5155, 5160, 5165, 5170, 5175, 5180, 5185, 5190, 5195, 5200, 5205, 5210, 5215, 5220, 5225, 5230, 5235, 5240, 5245, 5250, 5255, 5260, 5265, 5270, 5275, 5280, 5285, 5290, 5295, 5300, 5305, 5310, 5315, 5320, 5325, 5330, 5335, 5340, 5345, 5350, 5355, 5360, 5365, 5370, 5375, 5380, 5385, 5390, 5395, 5400, 5405, 5410, 5415, 5420, 5425, 5430, 5435, 5440, 5445, 5450, 5455, 5460, 5465, 5470, 5475, 5480, 5485, 5490, 5495, 5500, 5505, 5510, 5515, 5520, 5525, 5530, 5535, 5540, 5545, 5550, 5555, 5560, 5565, 5570, 5575, 5580, 5585, 5590, 5595, 5600, 5605, 5610, 5615, 5620, 5625, 5630, 5635, 5640, 5645, 5650, 5655, 5660, 5665, 5670, 5675, 5680, 5685, 5690, 5695, 5700, 5705, 5710, 5715, 5720, 5725, 5730, 5735, 5740, 5745, 5750, 5755, 5760, 5765, 5770, 5775, 5780, 5785, 5790, 5795, 5800, 5805, 5810, 5815, 5820, 5825, 5830, 5835, 5840, 5845, 5850, 5855, 5860, 5865, 5870, 5875, 5880, 5885, 5890, 5895, 5900, 5905, 5910, 5915, 5920, 5925, 5930, 5935, 5940, 5945, 5950, 5955, 5960, 5965, 5970, 5975, 5980, 5985, 5990, 5995, 6000, 6005, 6010, 6015, 6020, 6025, 6030, 6035, 6040, 6045, 6050, 6055, 6060, 6065, 6070, 6075, 6080, 6085, 6090, 6095, 6100, 6105, 6110, 6115, 6120, 6125, 6130, 6135, 6140, 6145, 6150, 6155, 6160, 6165, 6170, 6175, 6180, 6185, 6190, 6195, 6200, 6205, 6210, 6215, 6220, 6225, 6230, 6235, 6240, 6245, 6250, 6255, 6260, 6265, 6270, 6275, 6280, 6285, 6290, 6295, 6300, 6305, 6310, 6315, 6320, 6325, 6330, 6335, 6340, 6345, 6350, 6355, 6360, 6365, 6370, 6375, 6380, 6385, 6390, 6395, 6400, 6405, 6410, 6415, 6420, 6425, 6430, 6435, 6440, 6445, 6450, 6455, 6460, 6465, 6470, 6475, 6480, 6485, 6490, 6495, 6500, 6505, 6510, 6515, 6520, 6525, 6530, 6535, 6540, 6545, 6550, 6555, 6560, 6565, 6570, 6575, 6580, 6585, 6590, 6595, 6600, 6605, 6610, 6615, 6620, 6625, 6630, 6635, 6640, 6645, 6650, 6655, 6660, 6665, 6670, 6675, 6680, 6685, 6690, 6695, 6700, 6705, 6710, 6715, 6720, 6725, 6730, 6735, 6740, 6745, 6750, 6755, 6760, 6765, 6770, 6775, 6780, 6785, 6790, 6795, 6800, 6805, 6810, 6815, 6820, 6825, 6830, 6835, 6840, 6845, 6850, 6855, 6860, 6865, 6870, 6875, 6880, 6885, 6890, 6895, 6900, 6905, 6910, 6915, 6920, 6925, 6930, 6935, 6940, 6945, 6950, 6955, 6960, 6965, 6970, 6975, 6980, 6985, 6990, 6995, 7000, 7005, 7010, 7015, 7020, 7025, 7030, 7035, 7040, 7045, 7050, 7055, 7060, 7065, 7070, 7075, 7080, 7085, 7090, 7095, 7100, 7105, 7110, 7115, 7120, 7125, 7130, 7135, 7140, 7145, 7150, 7155, 7160, 7165, 7170, 7175, 7180, 7185, 7190, 7195, 7200, 7205, 7210, 7215, 7220, 7225, 7230, 7235, 7240, 7245, 7250, 7255, 7260, 7265, 7270, 7275, 7280, 7285, 7290, 7295, 7300, 7305, 7310, 7315, 7320, 7325, 7330, 7335, 7340, 7345, 7350, 7355, 7360, 7365, 7370, 7375, 7380, 7385, 7390, 7395, 7400, 7405, 7410, 7415, 7420, 7425,

