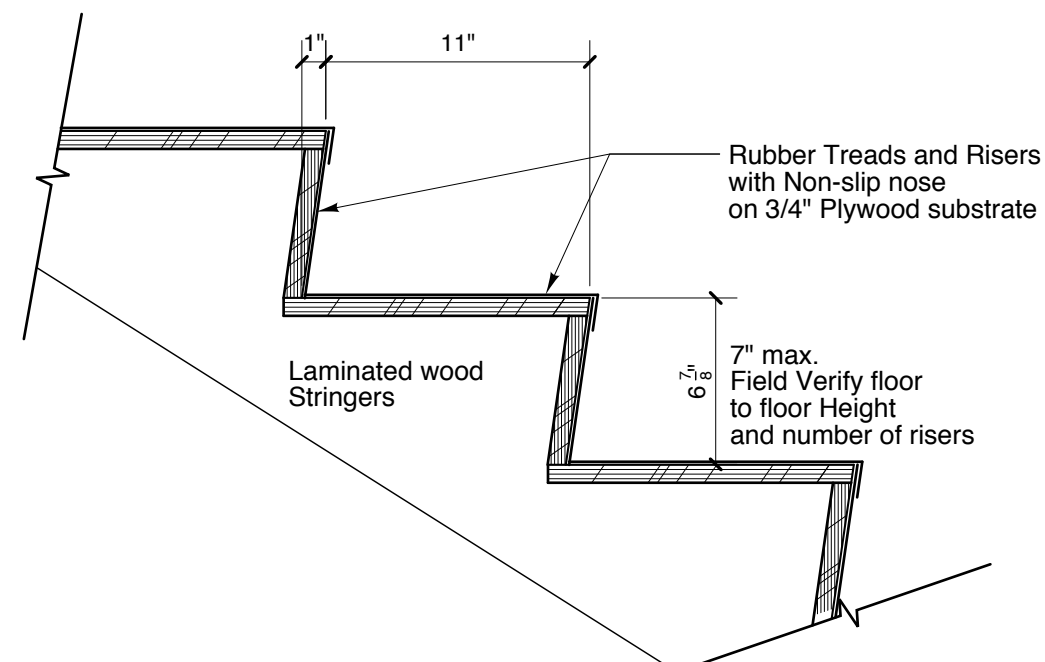


1 NEW STAIR SECTION

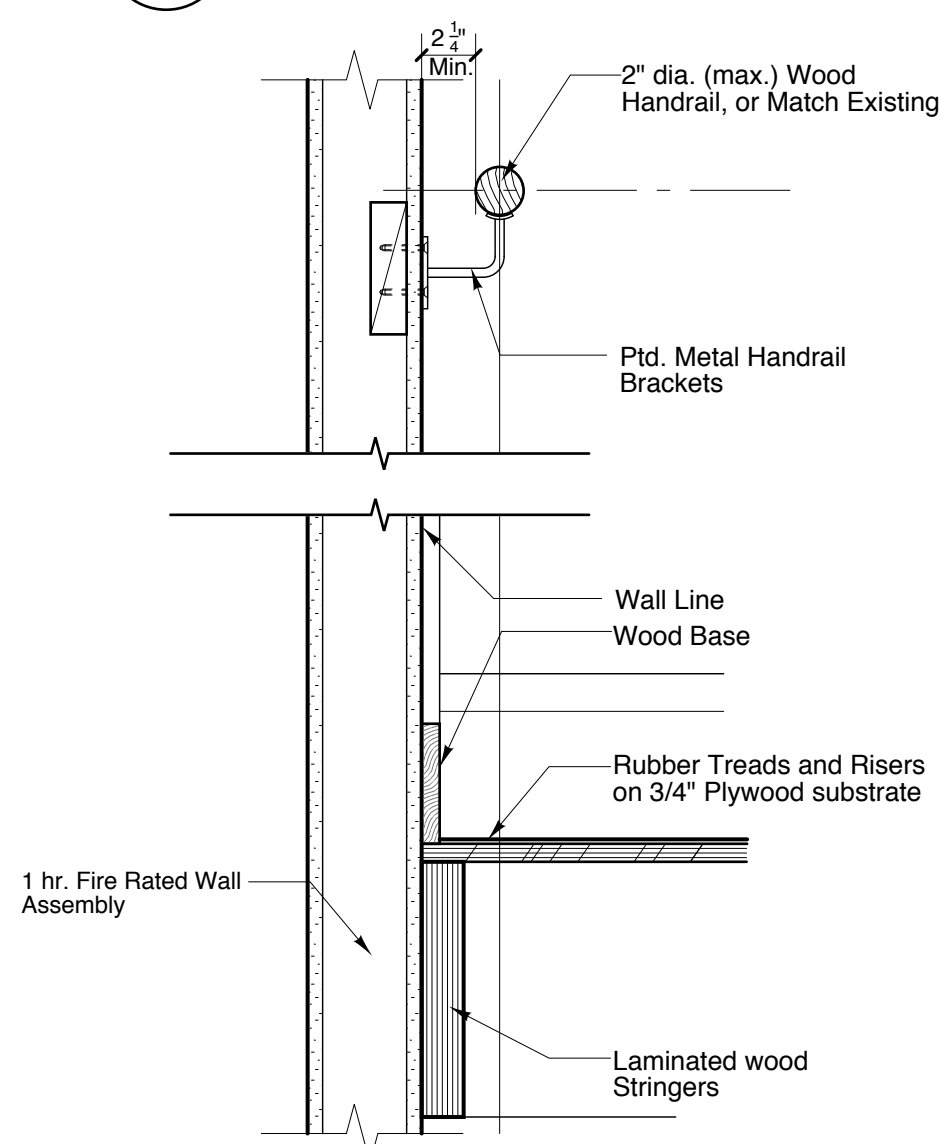
SCALE: 1/4" = 1'-0"

NOTE: SHADED AREAS SHOWN ARE EXISTING



2 DETAIL AT TREAD AND RISER (TYPICAL)

SCALE: 1 1/2" = 1'-0"



3 DETAIL AT WALL RAILING (TYPICAL)

SCALE: 1 1/2" = 1'-0"

HARDWARE SETS

HW1 Classroom Doors 001, 002, 003, 004, 005	Hinges Lever Lockset "Classroom Intruder Function" Closer Door Stop Silencers
HW2 Restroom Doors 008 and 009	Hinges Push-Pull SET Closer Door Stop Silencers
HW3 Storage or Utility Room Doors 011, 013, 014	Hinges Lever Lockset "Utility Function F84" Door Stop Silencers
HW4 Pair Doors 006	Hinges Sound gaskets, Jamb Head and Sill Sound Gasket Astrgal Lever Lockset "Utility Function F84" Silencers
HW5 Doors to Existing Storage 004B, 003B	Lever Lockset "Utility Function F84" Hinges Silencers
HW6 Stair Door 012	Hinges Fire Rated Exit Device (Non-rated Panic device for Doors in Non rated Smoke Partitions) Closer Silencers Stop
HW7 Ext. Exit Door 010	Hinges Exit Device and Closer Weatherstripping and Bottom Sweep Threshold Silencers

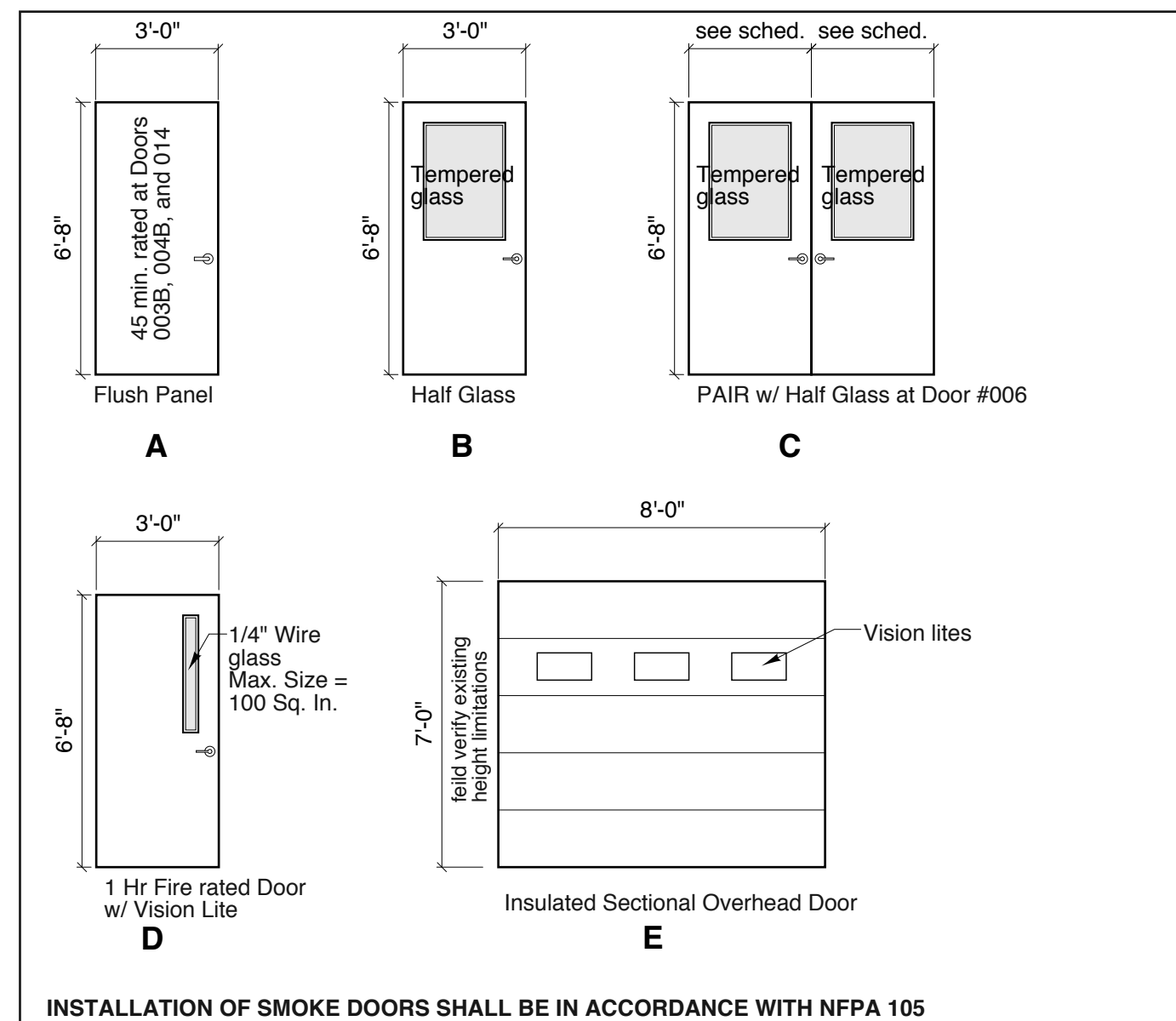
TYPICAL ROOM FINISHES

ROOM	WALLS	WALL BASE	FLOOR	CEILING	REMARKS
Typical Classroom	Painted Gyp. Bd.	Vinyl or Rubber	Carpet	Acoust. Lay-In Panels	
Fabrication Lab	Painted Gyp. Bd.	Vinyl or Rubber	Existing or sealed Conc.	Acoust. Lay-In Panels	
Restrooms	*Painted Gyp. Bd.	Vinyl or Rubber	Cer. Tile	Acoust. Lay-In Panels	*Cer. Tile on walls up to 4' abv fir behind all fixtures
New Stair	Painted Gyp. Bd.	Vinyl or Rubber	Rubber	Acoust. Lay-In Panels	
Corridors	Painted Gyp. Bd.	Vinyl or Rubber	Carpet	Acoust. Lay-In Panels	

DOOR SCHEDULE

Door No.	LOCATION		DOOR				FRAME		HARDWARE	COMMENTS	
	From	To	Size	Type	Material	Finish	Type	Material	Group		
LOWER FLOOR LEVEL											
001	Corridor 010	Classroom 001	3'-0" x 6'-8" x 1 3/4"	B	SC Wood			HM	HW1	Installation of smoke doors shall be in accordance with NFPA 105 and Testing of UL 1784	
002	Corridor 010	Classroom 002	3'-0" x 6'-8" x 1 3/4"	B	SC Wood			HM	HW1		
003	Corridor 010	Science Lab 003	3'-0" x 6'-8" x 1 3/4"	B	SC Wood			HM	HW1		
003B	Mstr. Science Lab 003	Existing Storage	3'-0" x 6'-8" x 1 3/4"	A	SC Wood			HM	HW5		45 min. rated door
004	Corridor 010	Classroom 004	3'-0" x 6'-8" x 1 3/4"	B	SC Wood			HM	HW1		
004B	Classroom 004	Unused	3'-0" x 6'-8" x 1 3/4"	A	SC Wood			HM	HW5		45 min. rated door
005	Corridor 010	Fabrication Lab 005	3'-0" x 6'-8" x 1 3/4"	B	SC Wood			HM	HW1		
005B	Fabrication Lab 005	Exterior	8'-0" x 7'-0"	E	Insul. Metal						sectional Overhead roll-up Door (to be determined)
006	Fabrication Lab 005	CNC Router 006	PAIR of 3'-0"x6'-8" x 1 3/4"	C	SC Wood			HM	HW4		Provide sound seal gaskets
007	Corridor 010	Lift	3'-0" x 6'-8" x 1 3/4"	D	SC Wood			HM			Door provided by Lift Co.
008	Corridor 010	Women 008	3'-0" x 6'-8" x 1 3/4"	A	SC Wood			HM	HW2		
009	Corridor 010	Men 009	3'-0" x 6'-8" x 1 3/4"	A	SC Wood			HM	HW2		
010	Corridor 010	Exterior	3'-0" x 6'-8" x 1 3/4"	A	Insul. Metal			HM	HW7		
011	Corridor 010	Storage 011	3'-0" x 6'-8" x 1 3/4"	A	SC Wood			HM	HW3		
012	Corridor 010	New Stair 012	3'-0" x 6'-8" x 1 3/4"	D	SC Wood			HM	HW6	1 hr rated door	
013	Science Lab 003	Closet 013	1'-6"x6'-8" x 1 3/4"	A	SC Wood			HM	HW3		
014	Science Lab 003	Storage 014	3'-0" x 6'-8" x 1 3/4"	A	SC Wood			HM	HW3	45 min. rated door	

NEW DOOR TYPES Doors in Smoke Partitions to meet UL test 1784 for gasketing requirements and NFPA 105.



INSTALLATION OF SMOKE DOORS SHALL BE IN ACCORDANCE WITH NFPA 105

TYPICAL DOOR AND HARDWARE NOTES:

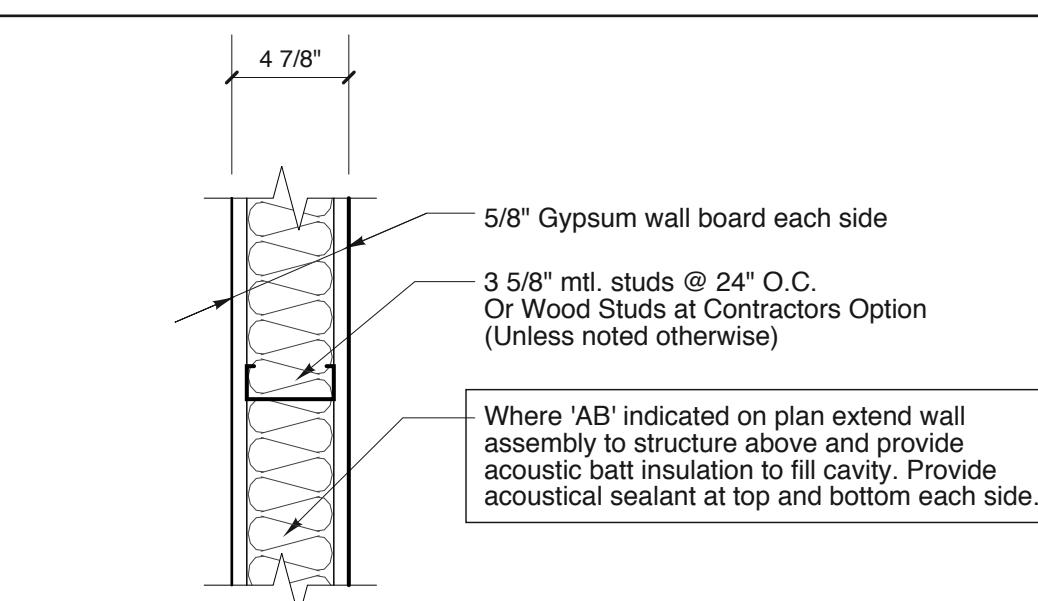
- All Doors To Be 3'-0" Wide, Unless Otherwise Noted.
 - All Door Glazing and Sidelight Glazing to be 1/4" Tempered Safety Glass.
 - All Door Locksets And Passages Sets To Be Lever Handle Type.
 - All Interior Doors Into Egress Stairs To Be Min. (1) Hr Rated With Panic Type Exit Devices and Closers.
- EXIT DEVICES**
- Manufacturers: Subject to compliance with requirements, provide products by one of the following:
 - Precision Hardware, Inc. (PH).
 - Sargent Manufacturing Company, Div. of ESSEX Industries, Inc. (SGT).
 - Von Duprin; an Ingersoll-Rand Company (VD).
 - Products: All exit devices for this project shall be one of the following:
 - Precision Olympian Series
 - The 80 Series exit device by Sargent & Co.
 - 98 Series by Von Duprin Division
 - Standard: BHMA A156.3.
 - BHMA Grade: Grade 1.
 - Certified Products: Provide exit devices listed in BHMA's "Directory of Certified Exit Devices."
 - Panic Exit Devices: Listed and labeled by a testing and inspecting agency acceptable to authorities having jurisdiction, for panic protection, based on testing according to UL 305.
 - Fire Exit Devices: Complying with NFPA 80 that are listed and labeled by a testing and inspecting agency acceptable to authorities having jurisdiction, for fire and panic protection, based on testing according to UL 305 and NFPA 252. Only fire exit devices may be used for fire doors.

PARTITION NOTES:

- All partitions not dimensioned are constructed with 3 5/8" metal studs or 2x4 wood studs.
 - Where wall is in-filled, or adjustment to existing wall, match existing wall thickness.
 - Extend all partitions to structure above, unless noted otherwise. Provide slip-track, or other acceptable means of allowing deflection in the roof, at all full-height partitions.
- Use moisture resistant gypsum wall board at wet locations, including (but not limited to, toilet rooms.)

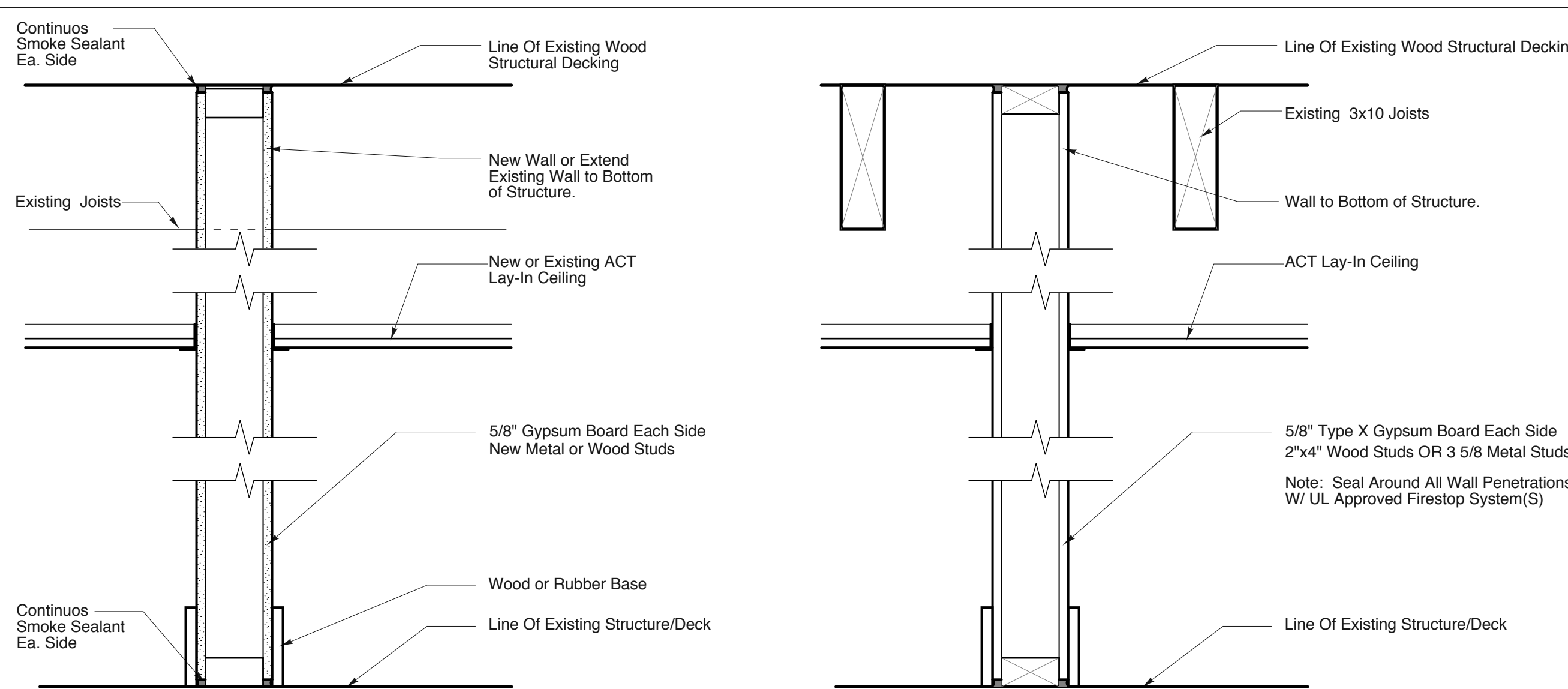
PARTITION TYPES:

- P1** Typical new wall. See Detail below.
- P1-AB.** Typical new wall - Extend to structure above with Gyp. Bd. each side. Provide slip-track or other acceptable means of allowing deflection in the roof, at all full-height partitions. Fill with acoustic batts per detail below.
- P2** New Smoke Partition to be extend to structure above. See partition detail.
- P2-AB.** New Smoke Partition - Fill with acoustic batts.
- P3** New One Hour Rated Partition- see partition detail.



P1 TYPICAL NEW STUD PARTITION

TYPICAL NON RATED PARTITION NOTED P1 OR P1-AB ON PLAN



P2 TYPICAL SMOKE PARTITION

SPACE AROUND PENETRATING ITEMS AND JOINTS SHALL BE FILLED WITH AN APPROVED MATERIAL TO LIMIT THE FREE PASSAGE OF SMOKE

INSTALLATION OF SMOKE DOORS SHALL BE IN ACCORDANCE WITH NFPA 105

P3 1hr RATED METAL OR WOOD STUD PARTITION

WOOD STUD ASSEMBLY 1-HOUR FIRE RATING - UL U309 or U314
METAL STUD ASSEMBLY 1-HOUR FIRE RATING - UL U465

Copyright 2014 Richard J Renner Architects

RRA
REGISTERED ARCHITECT
RICHARD J. RENNER
STATE OF MAINE
Richard Renner | Architects
Sherborn, MA
508.651.2385
Portland, ME
207.773.9699

Consultants:

LOWER FLOOR INTERIOR UPFIT
Baxter Academy
54 York Street
Portland, Maine

Door & Hardware Schedules Wall Details
Drawn by: RRA
Scale: AS NOTED
Date: 04-03-14
File Name:
Project No. 2012.10.03
Revised:

Baxter Academy Lower Flr. Upfit

A1.2