

SECTION 26 06 50.16

LIGHTING FIXTURE SCHEDULE

**SEE ATTACHED**

Project: **CCSB Compass Health Tenant Fit Up**  
Location: Portland, Maine  
Date: June 18, 2011

### LIGHTING FIXTURE SCHEDULE

Only the luminaires listed in this schedule will be accepted for approval. Lamp numbers refer to *Osram Sylvania* designations. Also approved are equal lamps manufactured by *General Electric*, and *Philips*. All fixtures are 120 volt, unless specifically noted otherwise.



**Dimensions:** Width = 11-3/4" Length = 48" Recess Height = 3-3/4"

Type: **A6**

Description: Recessed 1 x 4 static fluorescent troffer with flush frame for suspended acoustic tile ceilings. and an acrylic prismatic lens diffuser. Provide an electronic, programmed start non-dimming ballast.

Lamps: (2) F028/835/XP/SS/ECO

Manufacturers: *Columbia* # 4PS14-232G-FSA12-EP120

**Dimensions:** Width = 11-3/4" Length = 48" Recess Height = 3-3/4"

Type: **A7**

Description: Similar to Type A6 except with flush aluminum frame and gasketed door for damp location label.

Lamps: (2) F028/835/XP/SS/ECO

Manufacturers: *Columbia* # 4PS14-232G-FAA12-EP120



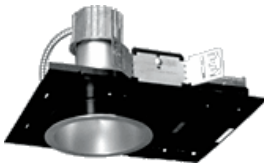
**Dimensions:** Length = 4' - 0" Width = 8 3/4" Recess Height = 7 3/4"

Type: **A15**

Description: Recessed open perimeter light with direct light distribution. Provide electronic, low harmonic ballast. Provide all necessary fittings including end caps, etc. to make a complete system. Provide trim suitable for installation in a gypboard ceiling.

Lamps: (1) FO32/835/XP/ECO

Manufacturers: *Focal Point Lighting* # FW4-NS-1T8-1C-120-S-RC-HW-4'



**Dimensions:** Aperture = 5 3/4" Diameter = 7"  
 Recess Height = 11 3/8"

Type: **B4**

Description: Recess down-light with regressed prismatic lens. Install fixtures within shower enclosures within bathrooms as shown on plans. Provide electronic non-dimming ballast. Luminaire shall be UL listed for wet locations.

Lamps: (1) CF26DD/E/835

Manufacturers: *Prescolite* # CFQ626EB-STF602-SS-PL-WT



**Dimensions:** Aperture = 4 1/2" Diameter = 6"  
Recess Height = 9 7/8"

**Type:** B5

**Description:** Recess down-light with regressed prismatic lens. Install fixtures within shower enclosures within bathrooms as shown on plans. Provide electronic non-dimming ballast. Luminaire shall be UL listed for wet locations.

**Lamps:** (1) CF26DT/E/IN/827ECO

**Manufacturers:** Prescolite # D432EB-4D5 BLANK LW-120V

---



**Dimensions:** Length = 11 3/4" Height = 5 1/8" Projection = 2 3/4"

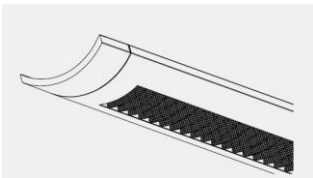
**Type:** E3

**Description:** Wall mounted emergency light with twin 6-watt halogen lamps and an integral 6-volt battery rated to operate the fixture for 90 minutes upon loss of normal power. Luminaire finish color shall be white.

**Lamps:** (2) 6W Halogen (by manufacturer)

**Manufacturers:** Dual-Lite # SL1-6H

---



**Dimensions:** Length = 4' - 0" Width = 9" Luminaire Height = 2.6"

**Type:** N8

**Description:** Suspended luminaire with 72% downlight/28% uplight distribution. Luminaire shall have white center downlight louvers and a top perforated metal shield. Luminaire finish shall be white. Suspend luminaire to a height of 8' 6" AFF. Provide electronic programmed start non-dimming ballast. Provide integral PIR occupancy sensor mounted at end of luminaire.

**Lamps:** (3) FO28/835/XP/SS/ECO

**Manufacturers:** Finelite # S12-ID-WCB-4'-3T8-SC-91W-STO-120-AC-FE-C4-.88-OBO

---

**Dimensions:** Length = 8' - 0" Width = 9" Luminaire Height = 2.6"

**Type:** N9

**Description:** Similar to Type N8 except 8 foot length and without integral occupancy sensor and with dual circuit to operate two outside lamps separately from center lamp.

**Lamps:** (6) FO28/835/XP/SS/ECO

**Manufacturers:** Finelite # S12-ID-WCB-8'-3T8-DC-91W-STO-120-AC-FE-C4-.88

---



**Dimensions:** Diameter = 12” Luminaire Height = 8” Overall Height = 22 ½”

**Type:** R1

**Description:** Suspended luminaire with clear prismatic acrylic refractor. Fixture canopy and stem shall be white. Provide integral electronic non-dimming ballast. Install luminaire canopy directly to ceiling deck between joists.

**Lamps:** (1) CF42DT/E/IN/835/ECO

**Manufacturers:** *Luraline Lighting* # SL1200 STEM-42TE/120/O

---



**Dimensions:** Diameter = 9.75” Overall Height = 37.1”

**Type:** R9

**Description:** Suspended luminaire with blown glass diffuser and satin chrome trim finish. Install luminaire canopy directly to ceiling deck between joists. Suspend luminaire with cord with bottom of luminaire at 8’-0” AFF.

**Lamps:** (2) CF26DD/E/835

**Manufacturers:** *Eureka Lighting* # 4212LG-SC-2402G-2805-WH-2XCF.D.26

---



**Dimensions:** Length= 13” Height = 9”

**Type:** X4

**Description:** Wall mounted, single sided exit sign with red letters and white housing. Provide directional arrows as indicated on the plans. Exit sign hall include an integral battery rated to operate the sign for 90 minutes upon loss of normal power.

**Lamps:** LED (by manufacturer)

**Manufacturers:** *Dual-Lite* # LX-U-R-W-E

---