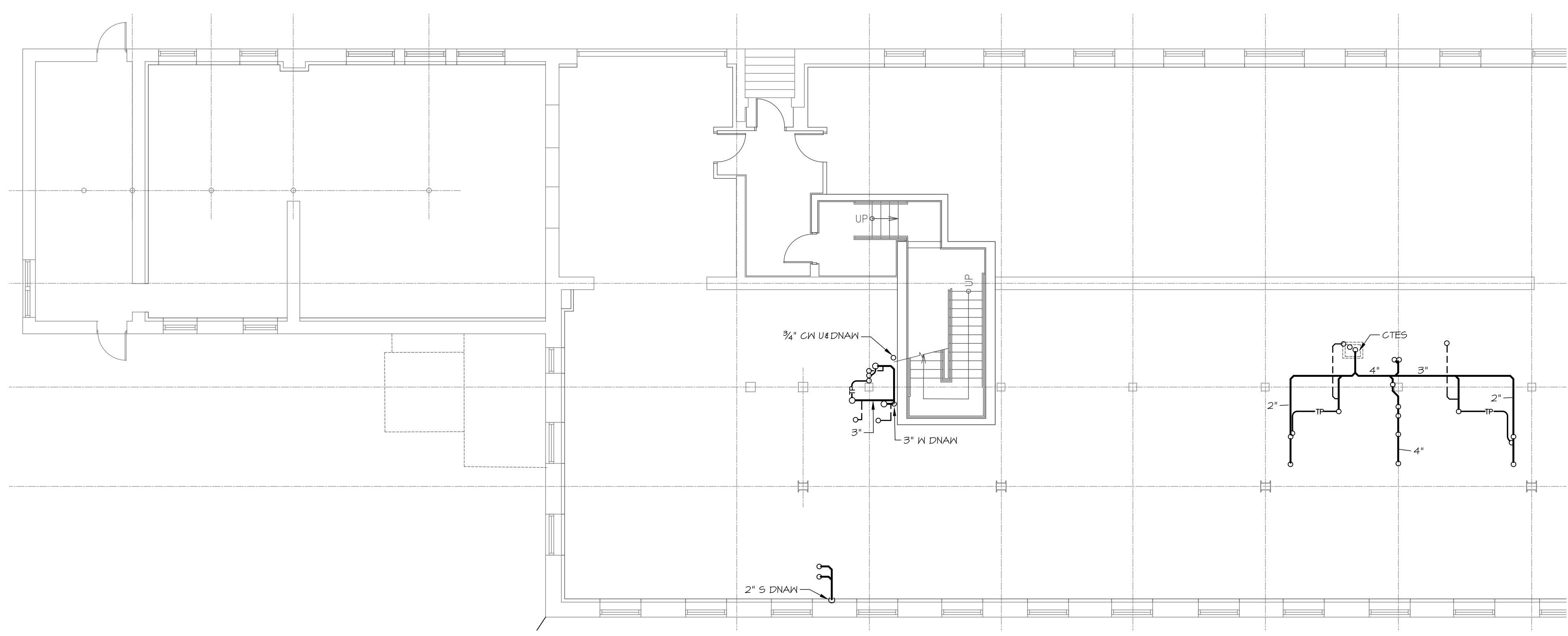
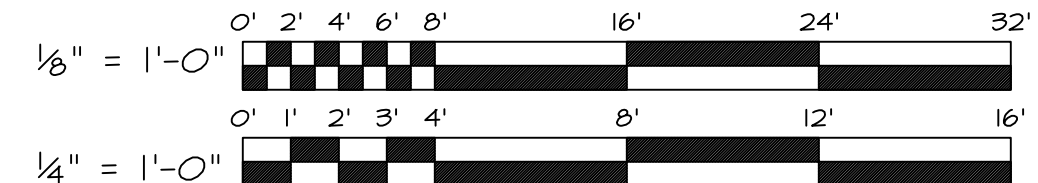


1 **COMPASS HEALTH
BASEMENT PLUMBING PLAN**
SCALE: 1/8" = 1'-0"



2 **COMPASS HEALTH
1st FLOOR PLUMBING PLAN**
SCALE: 1/8" = 1'-0"



MECHANICAL SYSTEMS ENGINEERS
ROYAL RIVER CENTER, UNIT #10
10 FOREST FALLS DRIVE
YARMOUTH, MAINE 04096
(207) 846-1441

© COPYRIGHT 2011 M.S.E. Proj. 1121

COMPASS HEALTH Tenant Fit up

Merrill's Wharf, Portland, Maine

Winton Scott Architects
5 Milk St. Portland, ME 04101
207.774.6680 | wintonscott.com

**Mechanical Systems
Engineers**
Royal River Center #10
10 Forest Falls Dr., Yarmouth, ME 04096
207.846.1441 |

Bartlett Design
942 Washington St., Bath, ME 04530
207.443.5447 |
bartlettdesigninc@comcast.net

SCALE: 1/8" = 1'-0"

**BASEMENT AND
1ST FLOOR
PLUMBING PLANS**

P1.2

JULY 01, 2011