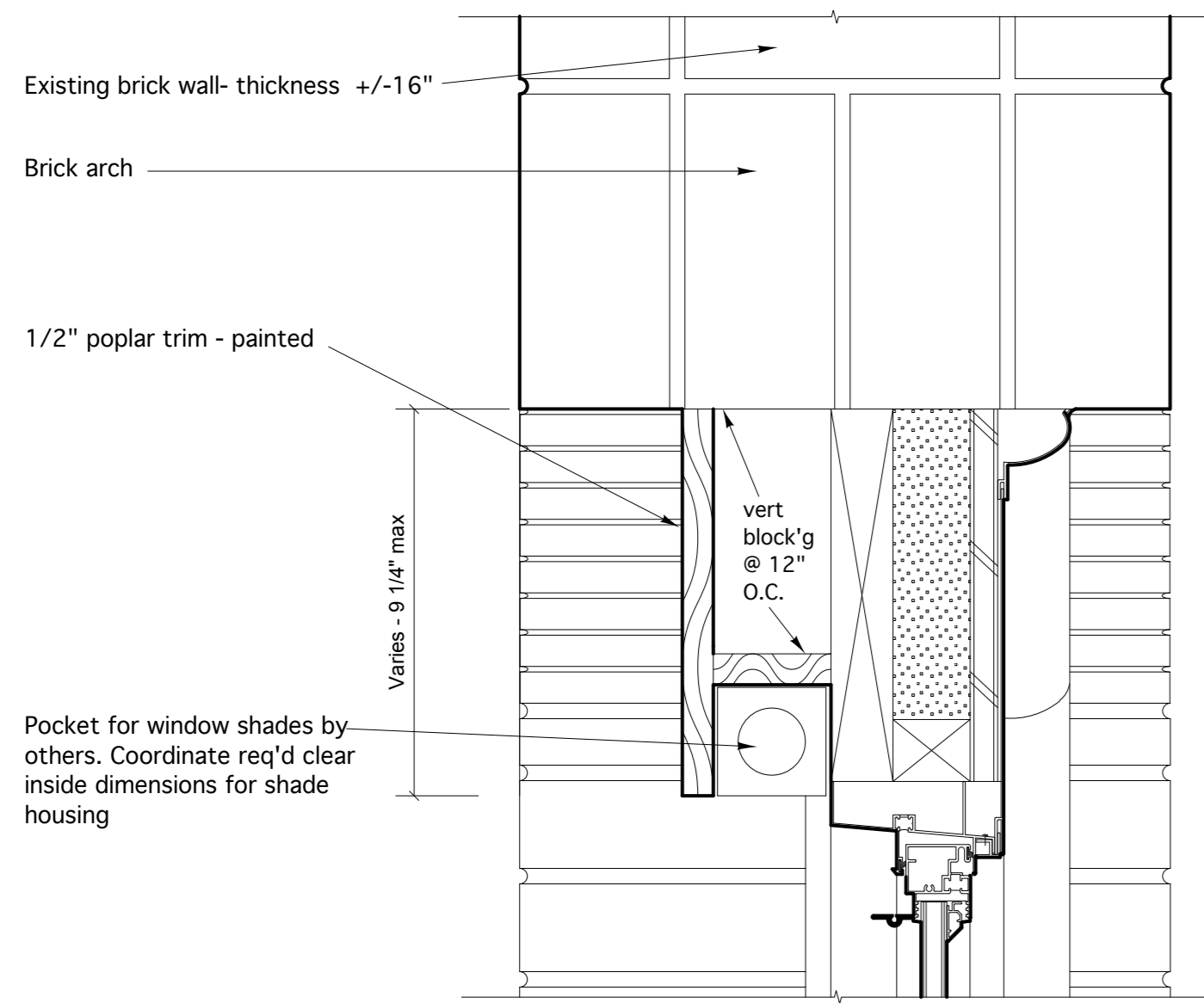
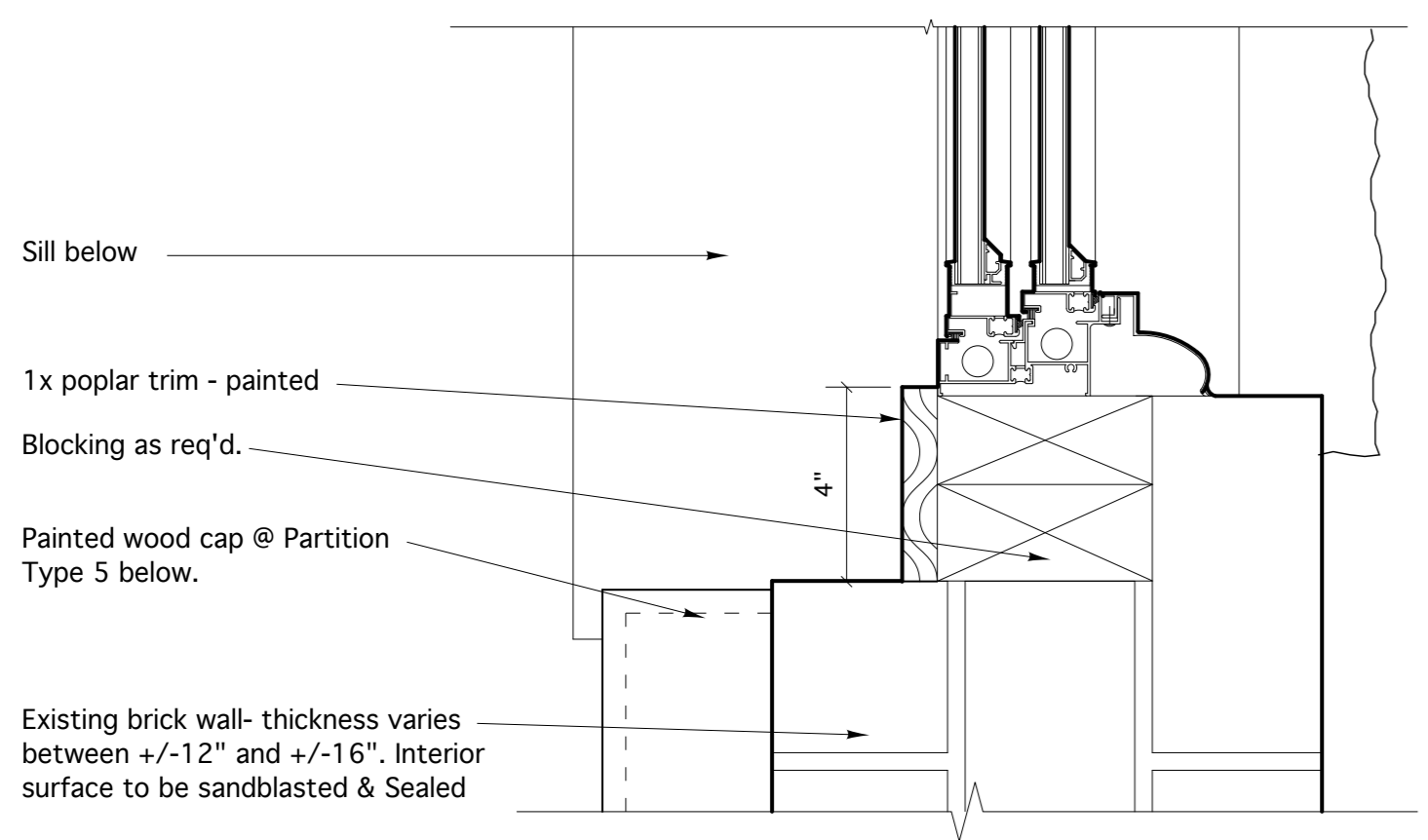


COMPASS HEALTH
Tenant Fit up
 Merrill's Wharf, Portland, Maine



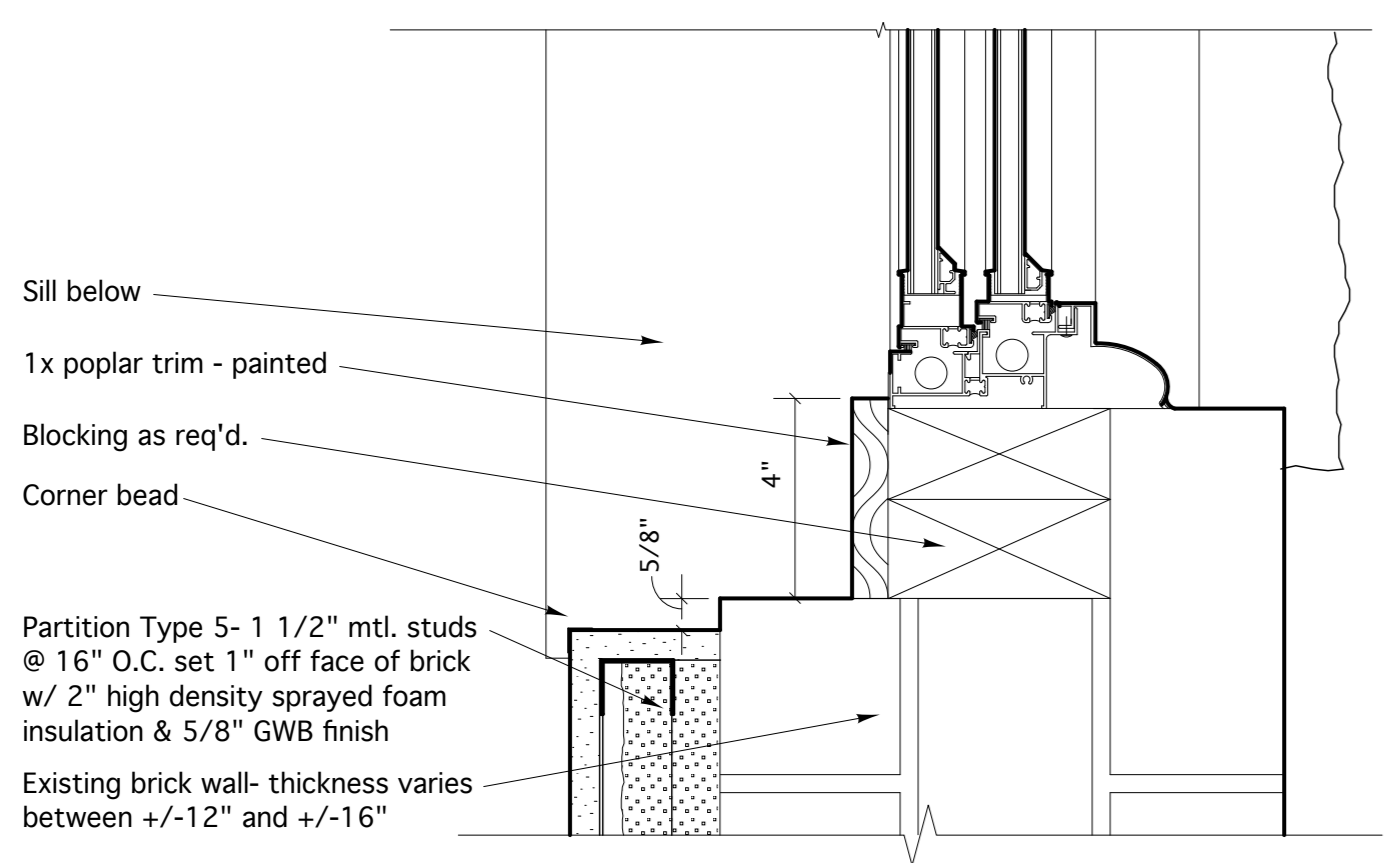
TYPICAL WINDOW HEAD TRIM DETAIL @ BRICK ARCH

Scale: 3"=1'-0"



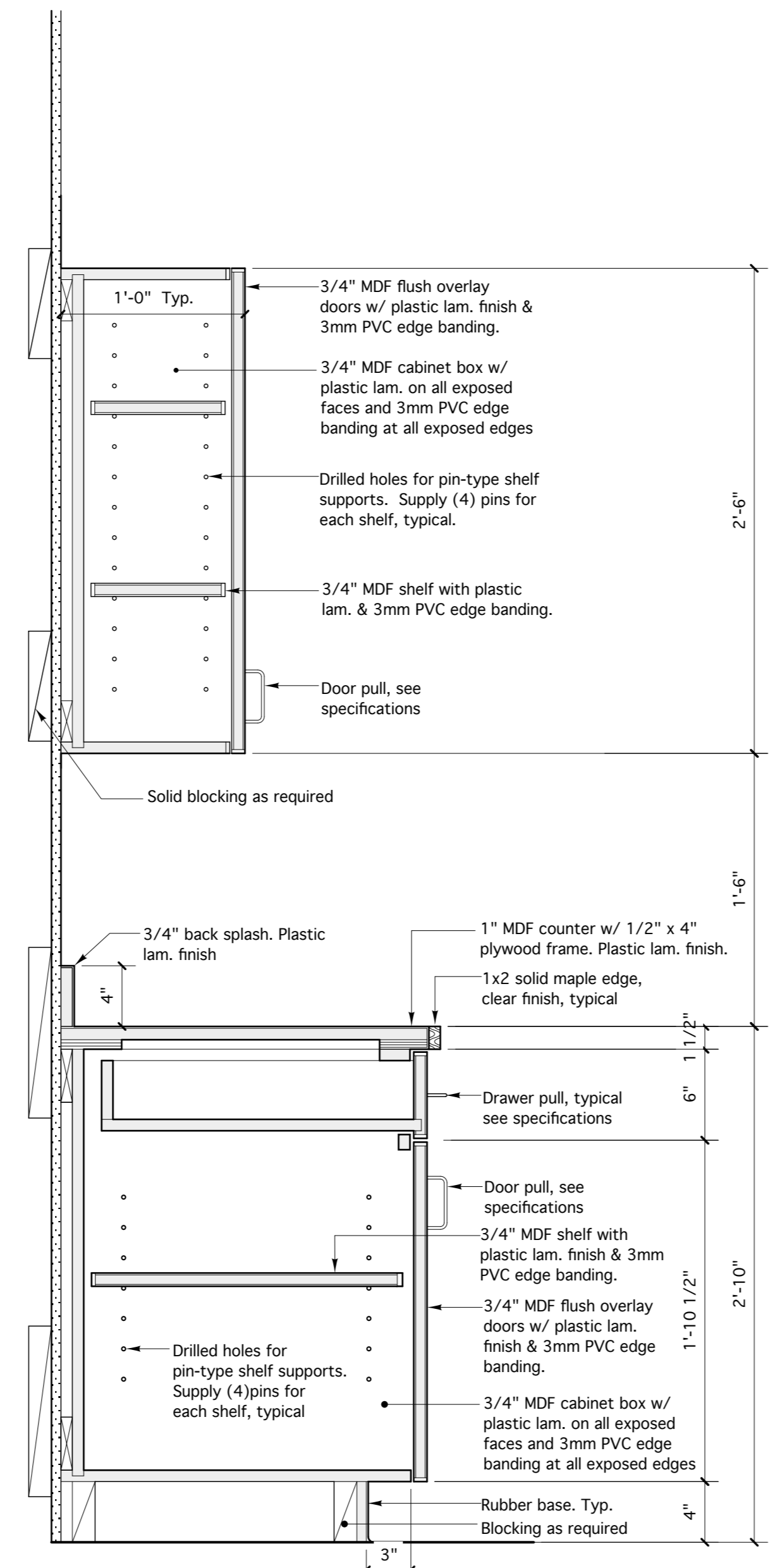
JAMB CONDITION @ Above 48" A.F.F.

Scale: 3"=1'-0"



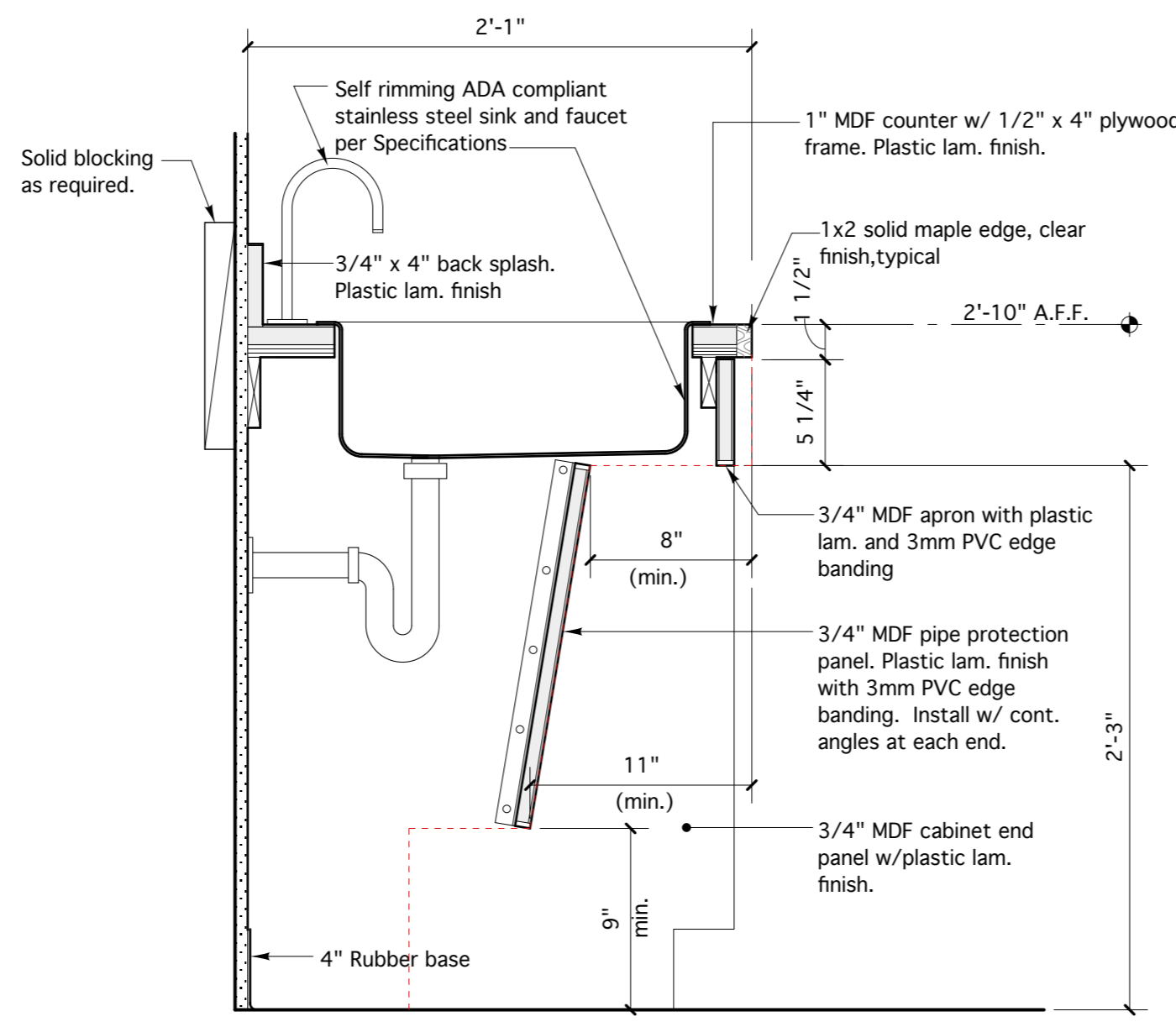
JAMB CONDITION @ Below 48" A.F.F.

Scale: 3"=1'-0"



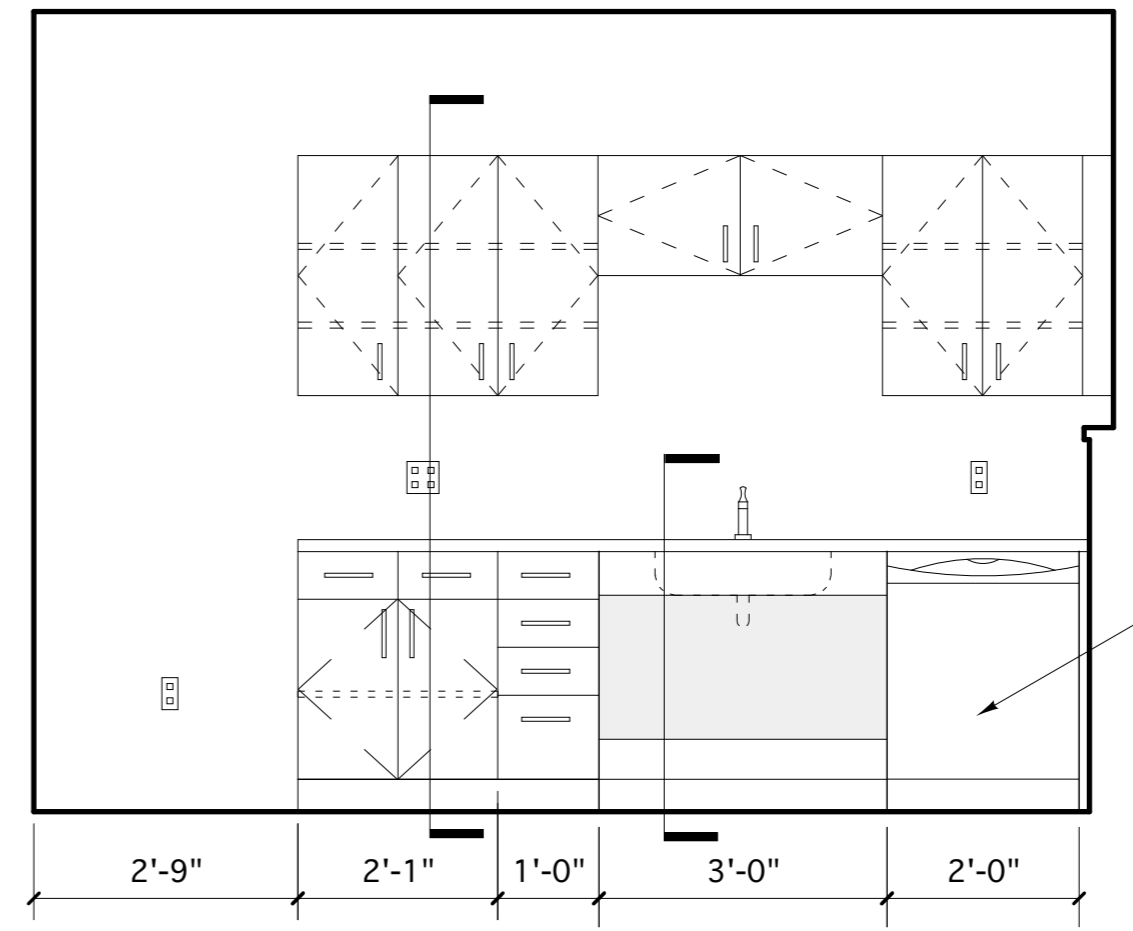
SECTION DETAIL AT KITCHEN COUNTER AND CABINETS

1 1/2" = 1'-0"



SECTION DETAIL AT KITCHEN SINK

1 1/2" = 1'-0"



BREAK ROOM ELEVATION

1/2" = 1'-0"

Winton Scott Architects
 5 Milk St. Portland, ME 04101
 207.774.6680 | wintonscott.com

Mechanical Systems Engineers
 Royal River Center #10
 10 Forest Falls Dr., Yarmouth, ME 04096
 207.846.1441 |

Bartlett Design
 942 Washington St., Bath, ME 04530
 207.443.5447 | bartlettdesigninc@comcast.net>

SCALE: AS NOTED

Misc. Details

A3.1