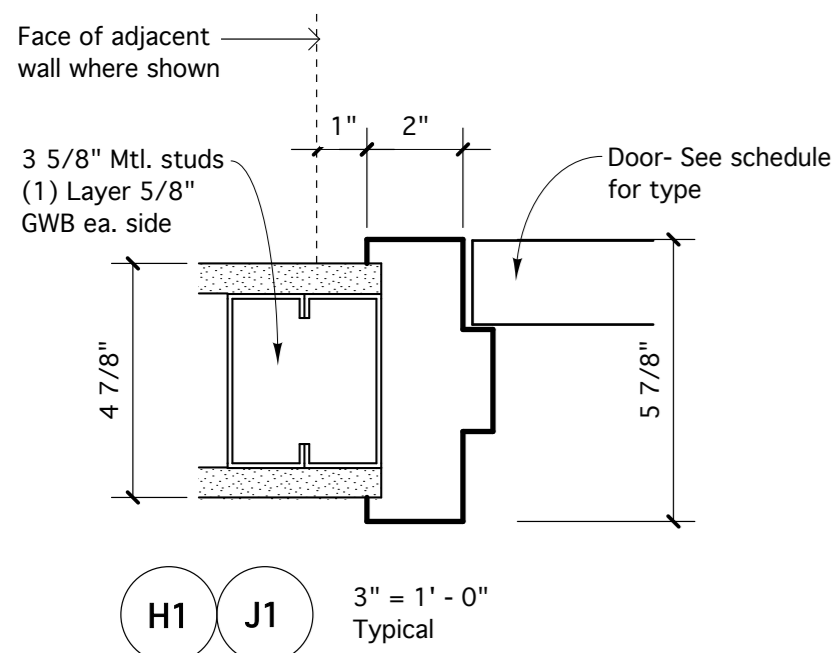
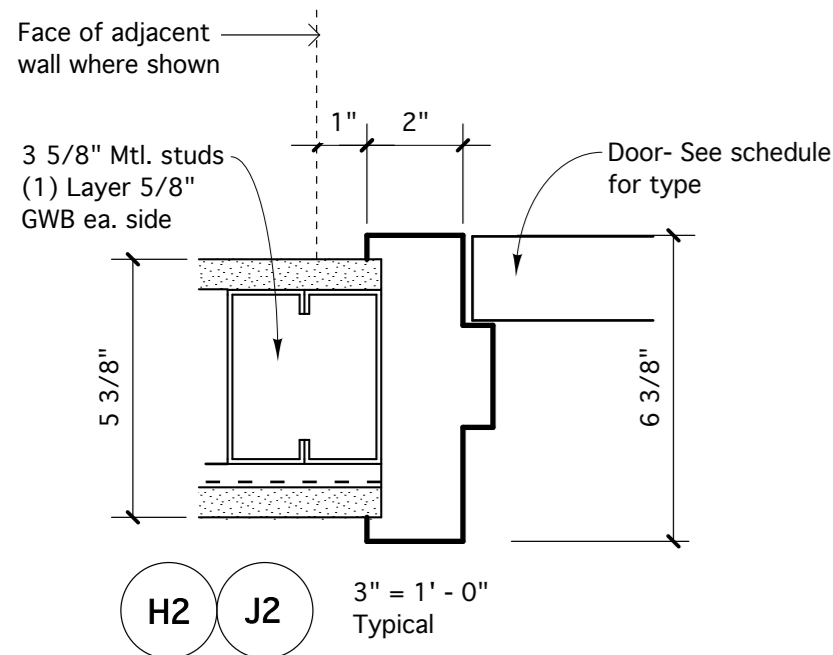


DOOR & FRAME SCHEDULE

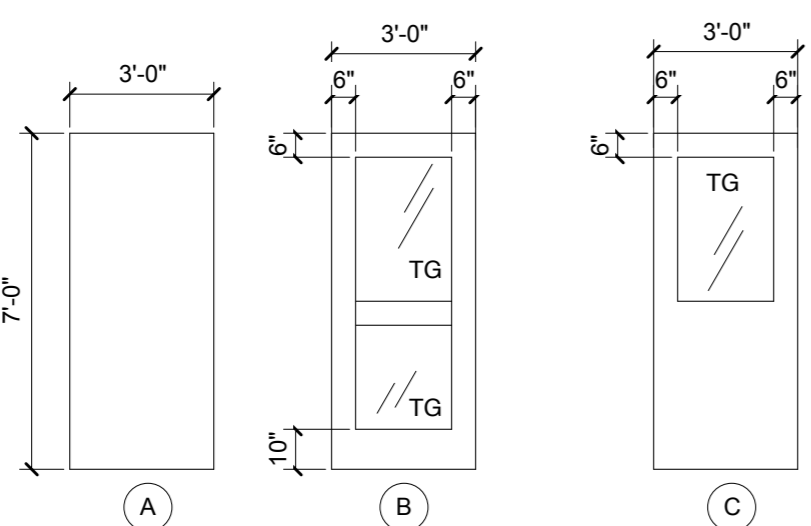
Door No.	Size (W x H)	Thickness	Door			Frame			Details				Hardware	Label	Remarks
			Material	Finish	Type	Material	Finish	Type	Head	Jamb	Threshold				
SECOND FLOOR															
201	3'-0" X 7'-0"	1 3/4"	SCWD	Cir. F.	B	HM	Ptd	F1	H1	J1	T2		HW1	--	
202	3'-0" X 7'-0"	1 3/4"	SCWD	Cir. F.	B	HM	Ptd	F1	H1	J1	--		HW1	--	
203	3'-0" X 7'-0"	1 3/4"	SCWD	Cir. F.	B	HM	Ptd	F1	H1	J1	--		HW1	--	
204	3'-0" X 7'-0"	1 3/4"	SCWD	Cir. F.	B	HM	Ptd	F1	H1	J1	--		HW1	--	
205	3'-0" X 7'-0"	1 3/4"	SCWD	Cir. F.	B	HM	Ptd	F1	H1	J1	--		HW1	--	
208	3'-0" X 7'-0"	1 3/4"	SCWD	Cir. F.	A	HM	Ptd	F1	H1	J1	--		HW2	--	
209	3'-0" X 7'-0"	1 3/4"	SCWD	Cir. F.	B	HM	Ptd	F2	H2	J2	T2		HW1	--	
210	3'-0" X 7'-0"	1 3/4"	SCWD	Cir. F.	B	HM	Ptd	F3	H1	J1	--		HW4	--	
211	3'-0" X 7'-0"	1 3/4"	SCWD	Cir. F.	A	HM	Ptd	F1	H1	J1	T1		HW3	--	
211.1	2'-0" X 7'-0"	1 3/4"	SCWD	Cir. F.	A	HM	Ptd	F1	H1	J1	--		HW3	--	
212	3'-0" X 7'-0"	1 3/4"	SCWD	Cir. F.	A	HM	Ptd	F1	H1	J1	T1		HW5	-- 1" Undercut	
213	3'-0" X 7'-0"	1 3/4"	SCWD	Cir. F.	A	HM	Ptd	F1	H1	J1	T1		HW5	-- 1" Undercut	
214	3'-0" X 7'-0"	1 3/4"	SCWD	Cir. F.	C	HM	Ptd	F1	H2	J2	--		HW1	--	
215	3'-0" X 7'-0"	1 3/4"	SCWD	Cir. F.	A	HM	Ptd	F1	H1	J1	T1		HW6	-- 1" Undercut	
216	3'-0" X 7'-0"	1 3/4"	SCWD	Cir. F.	A	HM	Ptd	F1	H1	J1	T1		HW6	-- 1" Undercut	
217	3'-0" X 7'-0"	1 3/4"	SCWD	Cir. F.	B	HM	Ptd	F2	H2	J2	T2		HW1	--	

ABBREVIATIONS	
SCWD	Solid Core wood door
Cir. F.	Clear Finish
HM	Hollow Metal
Ptd	Painted
HW	Hardware Set
TG	Tempered Glass



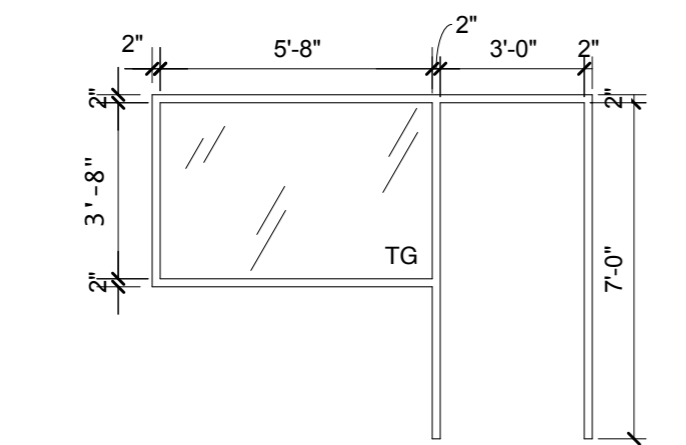
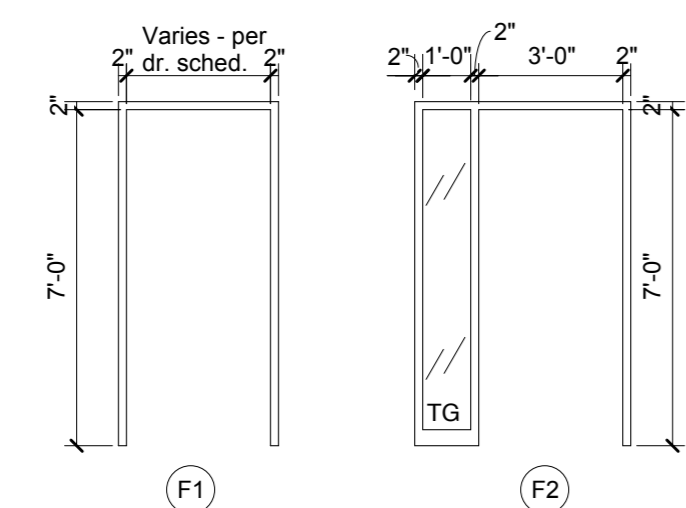
FRAME DETAILS

3" = 1'-0"



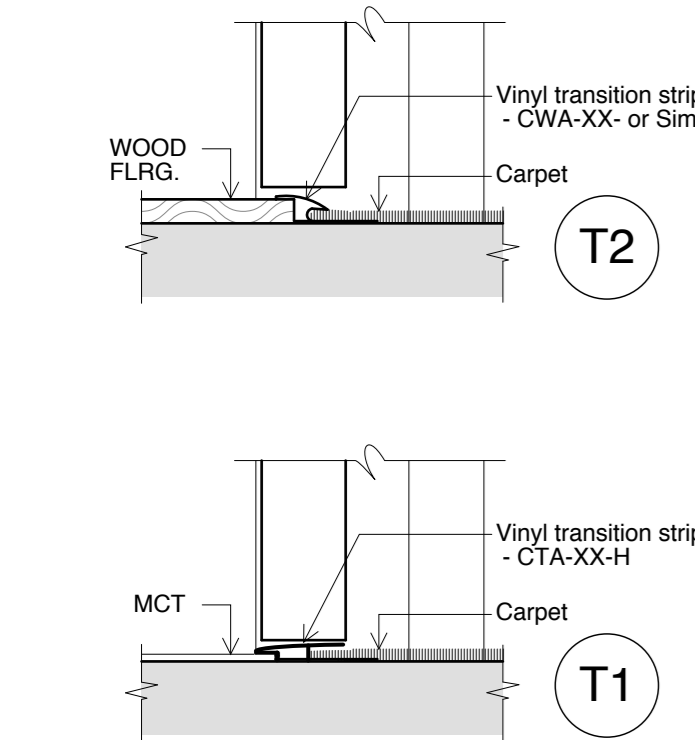
DOOR TYPES (Clear finish Maple)

1/4" = 1'-0"



FRAME TYPES

1/4" = 1'-0"



TRANSITION DETAILS

3" = 1'-0"

FLOORING TYPES LEGEND

- CPT 1 Mannington Broadloom "Unedited"; Color: Argali #8506 w/ Ultrabac RE Backing
- CPT 2 Mannington Broadloom "Chain of Thought"; Color: Argali #8506 w/ Ultrabac RE Backing
- CPT 3 Mannington Broadloom "Variations III"; Color: Argali #8506 w/ Ultrabac RE Backing
- WD FLRG Pre-finished Maple flooring
- MCT 1 Forbo Marmoleum Composition Tile 13"x13" Color: TBD.

----- Indicates area to receive 5" clear finish Maple base. All other areas to receive 4" resilient base

HARDWARE TYPES

- HW1 - HINGES, HEAVY DUTY CYLINDRICAL LOCKSET-ENTRANCE FUNCTION W/ LEVER HANDLE, SILENCERS, STOP.
- HW2 - HINGES, DUMMY LOCKSET W/ LEVER HANDLE, MAGNETIC CATCH SILENCERS, STOP.
- HW3 - HINGES, HEAVY DUTY CYLINDRICAL LOCKSET-STORE ROOM FUNCTION W/ LEVER HANDLE, SILENCERS, STOP.
- HW4 - HINGES, HEAVY DUTY CYLINDRICAL LOCKSET-CLASSROOM FUNCTION W/ LEVER HANDLE, SILENCERS, STOP.
- HW 5 - HINGES, HEAVY DUTY CYLINDRICAL LOCKSET- PRIVACY FUNCTION W/ LEVER HANDLE, SILENCERS, STOP.
- HW 6 - HINGES, PULL, PUSH PLATE, CLOSER, KICK PLATE, SILENCERS, STOP.

HARDWARE NOTES:

HARDWARE TO BE COMMERCIAL GRADE (SCHLAGE L SERIES) IN BRUSHED CHROME FINISH.

BATHROOM ACCESSORIES SCHEDULE

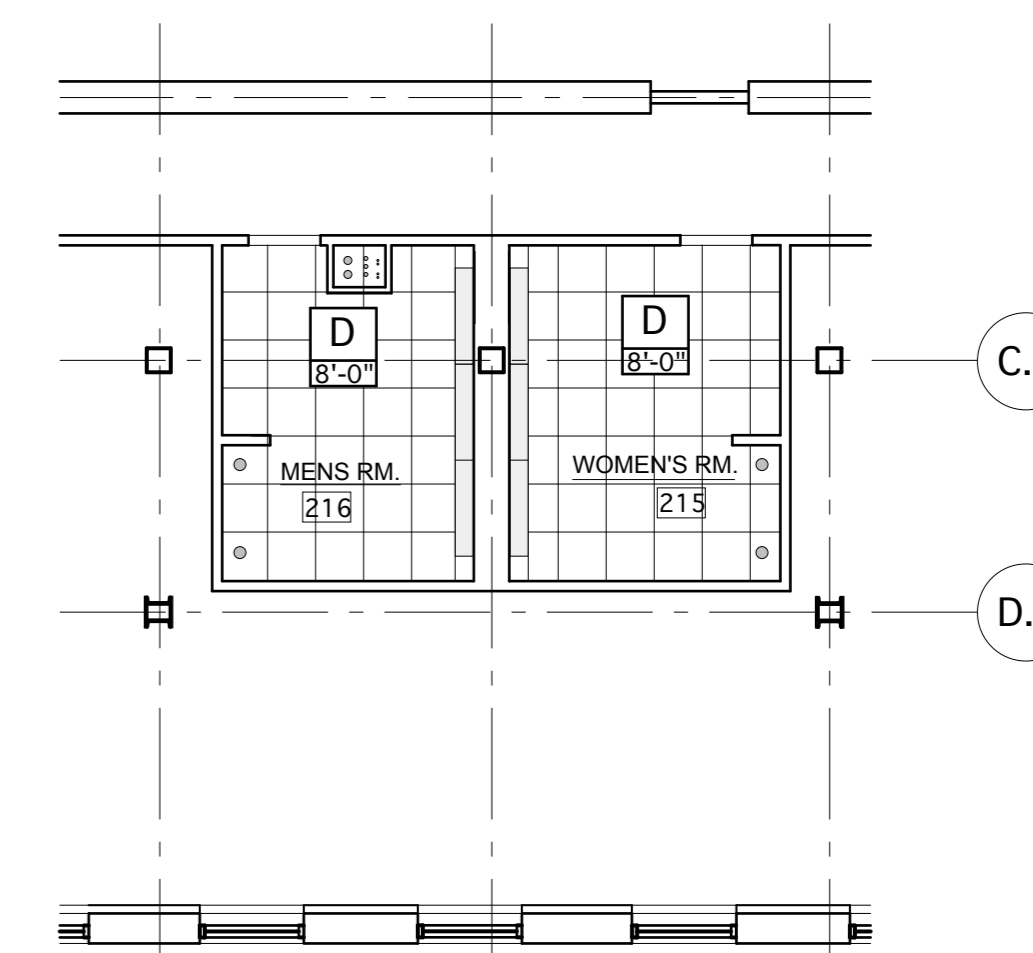
- A. TOILET TISSUE HOLDER: Bobrick No. B-2888
- B. SANITARY NAPKIN DISPOSAL: Bobrick No. B-254.
- C. GRAB BAR 42" : Bobrick No. B-5806 Series
- D. GRAB BAR 36" : Bobrick No. B-5806 Series
- E. PAPER TOWEL/WASTE RECEPTACLE: Bobrick No. B-38032
- F. COUNTER MNTD. SOAP DISPENSER: Bobrick No. B-2112

BATHROOM FINISH NOTES:

FLOOR FINISH TO BE CERAMIC TILE WITH CERAMIC BASE:

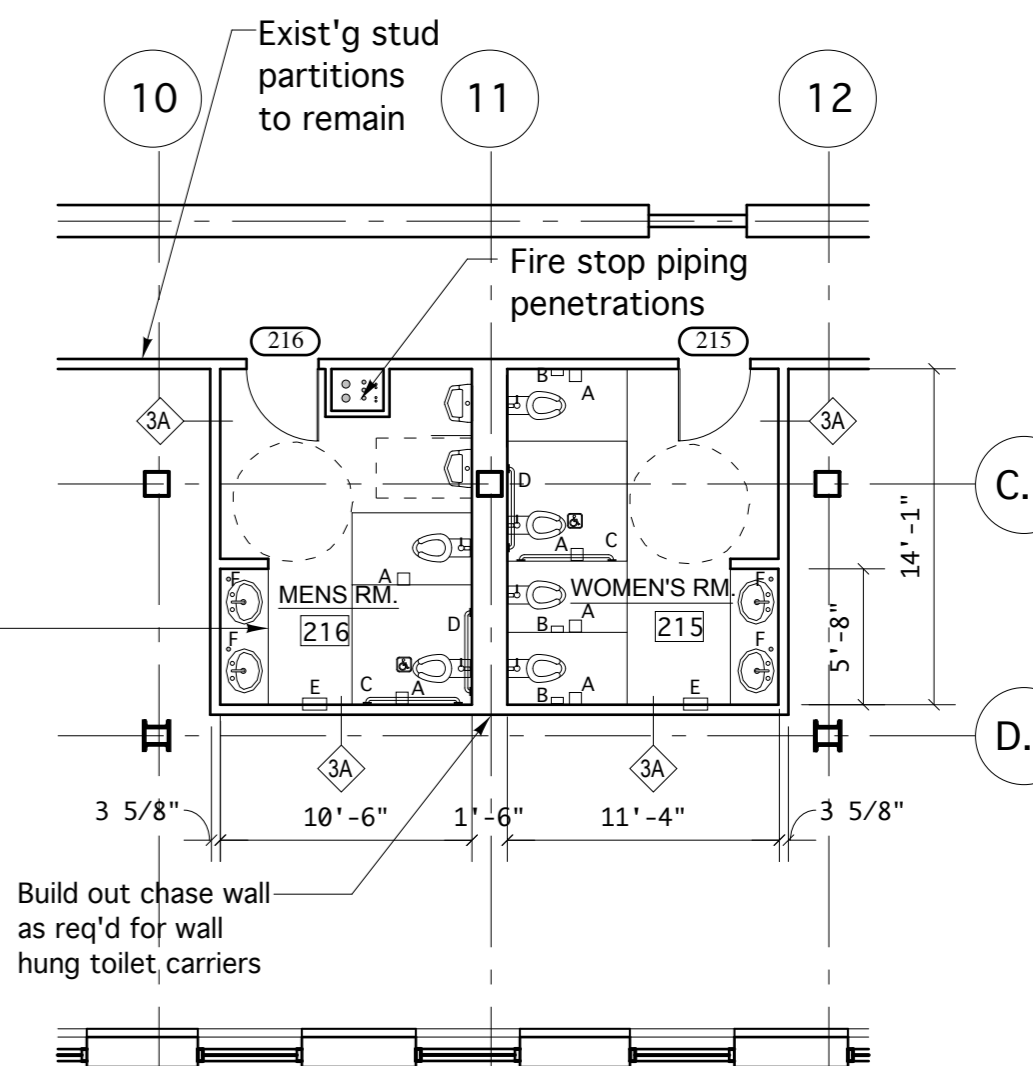
"VALLE D'AOSTA" GLAZED PORCELAIN TILE, 13"X20" BY DAL TILE OR SIMILAR SELECTED BY ARCHITECT WITH 6" PORCELAIN BASE

TOILET PARTITIONS TO BE ENAMELED METAL, FLOOR MOUNTED OVERHEAD BRACED.



COMMON BATHROOM CEILING PLAN

1/8" = 1'-0"

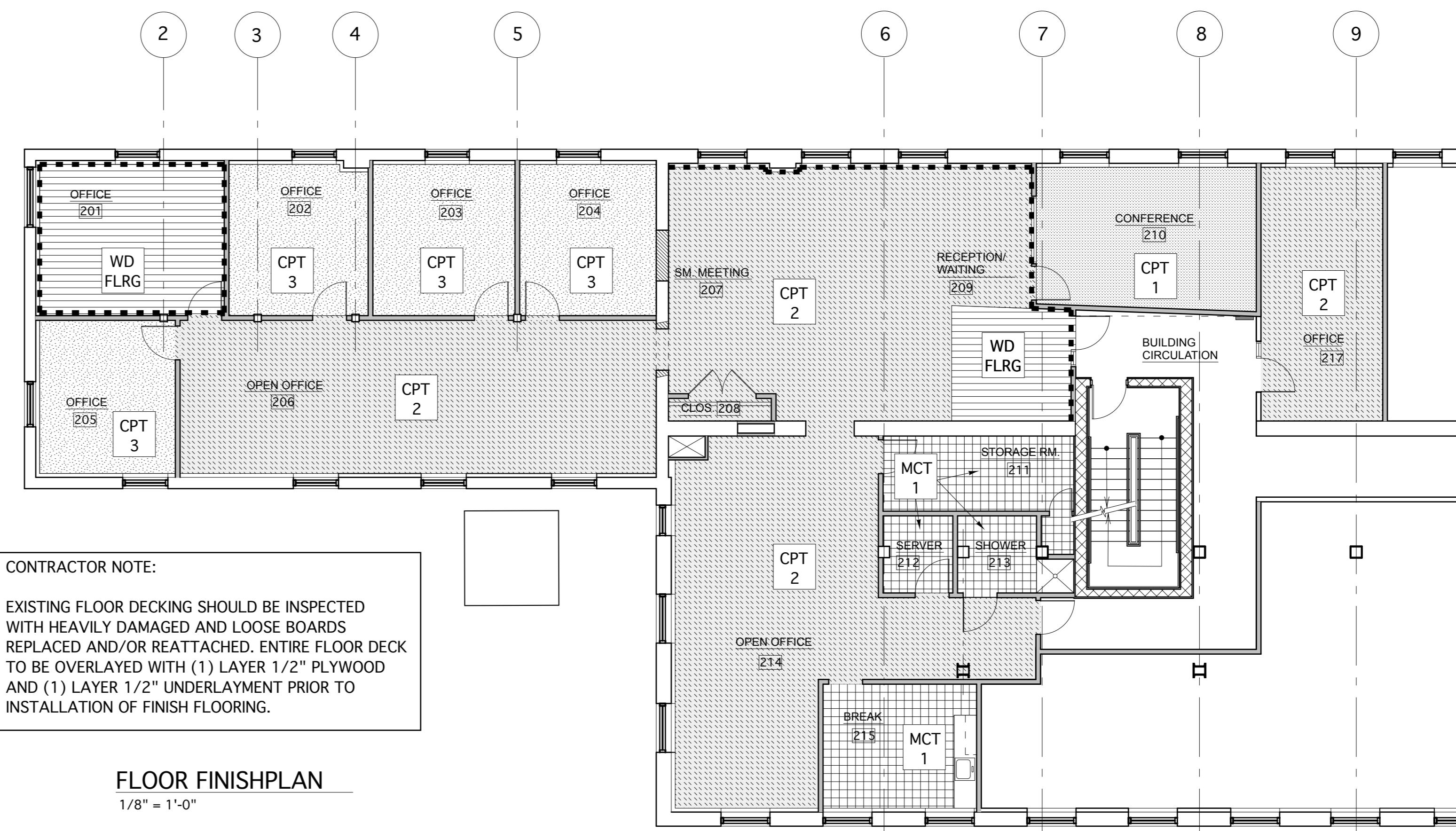


COMMON BATHROOM PLAN

1/8" = 1'-0"

4' high 1/4" glass mirror w/ polished edges . Extend full length of counter top, bottom of mirror to abutt top of splash-typical at both toilet rooms.

Vanity is aone piece unit w/ integrated sinks. ENTIRE UNIT TO BE SUPPLIED BY PLUMBING CONTRACTOR. SEE PLUMBING DRAWINGS & SPECS.

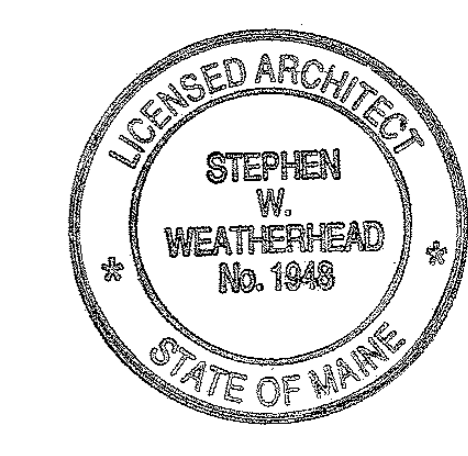


CONTRACTOR NOTE:

EXISTING FLOOR DECKING SHOULD BE INSPECTED WITH HEAVILY DAMAGED AND LOOSE BOARDS REPLACED AND/OR REATTACHED. ENTIRE FLOOR DECK TO BE OVERLAYED WITH (1) LAYER 1/2" PLYWOOD AND (1) LAYER 1/2" UNDERLAYMENT PRIOR TO INSTALLATION OF FINISH FLOORING.

FLOOR FINISHPLAN

1/8" = 1'-0"



COMPASS HEALTH
Tenant Fit up
 Merrill's Wharf, Portland, Maine

Winton Scott Architects
 5 Milk St. Portland, ME 04101
 207.774.6680 | wintonscott.com

Mechanical Systems Engineers
 Royal River Center #10
 10 Forest Falls Dr., Yarmouth, ME 04096
 207.846.1441 |

Bartlett Design
 942 Washington St., Bath, ME 04530
 207.443.5447 | bartlettdesigninc@comcast.net>

SCALE: AS NOTED

Door Schedule/ Finish Plan / Bathroom Plans & Details

A2.1