

SECTION 26 06 50.16

LIGHTING FIXTURE SCHEDULE

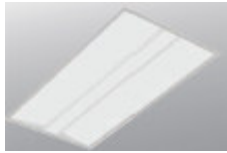
**SEE ATTACHED**

Project: **Cumberland Cold Storage Building**  
Location: Portland, Maine  
Date: September 23, 2010

**LIGHTING FIXTURE SCHEDULE**

Lighting Fixture Schedule based on luminaire selection made by  
**Visnick & Caulfield Associates**  
 500 Boylston Street, Boston, Massachusetts

Only the luminaires listed in this schedule will be accepted for approval. Lamp numbers refer to *Osram Sylvania* designations. Also approved are equal lamps manufactured by *General Electric*, and *Philips*. All fixtures are 277 volt, unless specifically noted otherwise.



**Dimensions: Length = 48" Width = 23 13/16" Recess Height = 4 3/8"**

Type: **A1**  
Description: Recessed 2 x 4 direct/indirect troffer with flat acrylic lens panels. Provide electronic, non-dimming, low harmonic ballast.  
Lamps: (2) FP54/835/HO  
Manufacturers: *Ledalite* # 3324-D1-ST-H254-S-1-2-E

**Dimensions: Length/Width = 23 3/4" Recess Height = 3 1/4"**

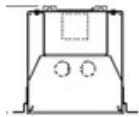
Type: **A2**  
Description: Similar to Type A1 except 2 x 2 size.  
Lamps: (1) FT40DL/835/RS/ECO  
Manufacturers: *Ledalite* # 3322-D1-ST-B140-S-1-2-E

**Dimensions: Length/Width = 23 3/4" Recess Height = 3 1/4"**

Type: **A2D**  
Description: Similar to Type A1 except 2 x 2 size and with electronic dimming ballast.  
Lamps: (1) FT40DL/835/RS/ECO  
Manufacturers: *Ledalite* # 3322-D1-ST-B140-S-7-2-E

Type: **A3: NOT USED**

Type: **A4: NOT USED**



**Dimensions: Length = 6'-0" Width = 4 3/8" Recess Height = 4 1/2"**

Type: **A5**  
Description: Recessed luminaire with matte white acrylic lens. Provide Advance Mark X electronic, dimming, low harmonic ballast, or equal.  
Lamps: (4) FP39/835/HO/ECO  
Manufacturers: *Pinnacle* # E4A-2T5HO-6'-SF-277-1D-W



**Dimensions:** Aperture = 6" Recess Height = 7 1/8"

**Type:** B1

**Description:** Recessed open downlight with clear semi-specular aluminum reflector.

**Lamps:** (16) LED by Manufacturer

**Manufacturers:** *Omega Lighting* # OM6LED-27-277/R6LED-35K-MD-CSS

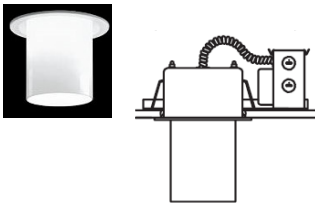
**Dimensions:** Aperture = 6" Recess Height = 7 1/8"

**Type:** B1D

**Description:** Identical to Type B1 except with dimming driver.

**Lamps:** (16) LED by Manufacturer

**Manufacturers:** *Omega Lighting* # OM6LED-27-277/R6LED-35K-MD-CSS



**Dimensions:** Trim Diameter = 6.5" Recess Height = 4"  
Dropped Diffuser Height = 5.5" Diffuser Diameter = 4.4"

**Type:** B2

**Description:** Recessed downlight with dropped cylindrical hand-blown white opal glass diffuser. Luminaire shall include electronic non-dimming ballast.

**Lamps:** (1) CF18DD/E/835

**Manufacturers:** *Louis Poulsen* # BAL-1/18/CF GX24q-2-277V-WHT

**Dimensions:** Aperture = 6" Recess Height = 7 1/8"

**Type:** B3

**Description:** Similar to Type B1 except UL listed for wet locations.

**Lamps:** (16) LED by Manufacturer

**Manufacturers:** *Omega Lighting* # OM6LED-27-277/R6LED-35K-MD-CSS

**Type:** B4: NOT USED

**Type:** B5: NOT USED



**Dimensions:** Aperture = 3"sq Recess Height = 6"

**Type:** B6

**Description:** Recessed downlight with regressed, beveled trim. Provide integral ballast.

**Lamps:** (1) CMH20MR16/830/FL (*General Electric*)

**Manufacturers:** *Tech Lighting* # E3S-F-B-C20-D-N-M-277

**Dimensions: Aperture = 3”sq Recess Height = 6”**

**Type: B7**

**Description:** Similar to Type B6 except with adjustable lamp socket.

**Lamps:** (1) CMH20MR16/830/FL (*General Electric*)

**Manufacturers:** *Tech Lighting # E3S-F-B-C20-A-N-M-277*

---

**Dimensions: Aperture = 3”round Recess Height = 6”**

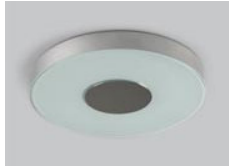
**Type: B8**

**Description:** Similar to Type B6 except with round trim opening and LED lamps with 25-degree optics.

**Lamps:** LED (by manufacturer)

**Manufacturers:** *Tech Lighting # E3R-F-B-L32-D-N- 277*

---



**Dimensions: Diameter = 14.57” Height = 2.03”**

**Type: C1**

**Description:** Surface ceiling light with satin chrome finish.

**Lamps:** (1) FPC40/835

**Manufacturers:** *Eureka Lighting # 4620 SC FRO F.T5.C.40*

---



**Dimensions: Length = 11 3/4” Height = 5 1/8”  
Projection = 2 3/4”**

**Type: E1**

**Description:** Wall mounted emergency light with twin 6-watt halogen lamps and an integral 6-volt battery rated to operate the fixture for 90 minutes upon loss of normal power. Luminaire finish color shall be white.

**Lamps:** (2) 6W Halogen (by manufacturer)

**Manufacturers:** *Dual-Lite # SL1-6H*

---

**Dimensions: Length = 11 3/4” Height = 5 1/8”  
Projection = 2 3/4”**

**Type: E2**

**Description:** Identical to Type E1 except mounted on wood column. Install top of luminaire immediately below bottom of intersecting beam.

**Lamps:** (2) 6W Halogen (by manufacturer)

**Manufacturers:** *Dual-Lite # SL1-6H*

---



**Dimensions: Length = 4' - 0" Width = 12" Luminaire Height = 3 1/4"**

**Type: N1**

**Description:** Suspended luminaire with 20% indirect/80% direct lighting distribution. Luminaire shall have perforated center basket and flat acrylic side lens. Luminaire finish shall be white. Consult Architect for pendant cable length. Provide electronic non-dimming ballast.

**Lamps:** (1) FP54/835/HO

**Manufacturers:** *Ledalite # 7306-H01-1-G-04-1-2-E-W*

**Dimensions: Length = 8' - 0" Width = 12" Luminaire Height = 3 1/4"**

**Type: N2**

**Description:** Similar to Type N1 except 8 foot length. Consult Architect for pendant cable length. Provide electronic non-dimming ballast.

**Lamps:** (2) FP54/835/HO

**Manufacturers:** *Ledalite # 7306-H01-1-G-08-1-2-E-W*

**Dimensions: Length = 4' - 0" Width = 12" Luminaire Height = 3 1/4"**

**Type: N3**

**Description:** Similar to Type N1 except with 60% indirect/40% direct lighting distribution. Consult Architect for pendant cable length. Provide electronic non-dimming ballast.

**Lamps:** (1) FP54/835/HO

**Manufacturers:** *Ledalite # 7306-H01-1-N-04-1-2-E-W*

**Dimensions: Length = 8' - 0" Width = 12" Luminaire Height = 3 1/4"**

**Type: N4**

**Description:** Similar to Type N1 except with 60% indirect/40% direct lighting distribution and 8 foot length. Consult Architect for pendant cable length. Provide electronic non-dimming ballast.

**Lamps:** (2) FP54/835/HO

**Manufacturers:** *Ledalite # 7306-H01-1-N-08-1-2-E-W*



**Dimensions: Overall Length = 8' - 0" Diameter = 1.25"**

**Type: N5**

**Description:** Suspended indirect tube light with satin clear housing finish and with satin ice clear diffuser lens. Suspend luminaire with adjustable aircraft cable to height as directed by Architect. Provide electronic non-dimming ballast.

**Lamps:** (2) FP28/835/ECO

**Manufacturers:** *Birchwood Lighting # HAI-125-CSS-T5-CR08-2-EB-SC-SIC/CSS-HAI125-UP-SCR-CU24-NC-CU-SC-MF*



**Dimensions: Height = 7" Diameter = 4"**

**Type: N6**

**Description:** Suspended decorative luminaire with transparent cylinder shade over a white case glass cylinder. Suspend luminaire to height as directed by Architect. Provide electronic non-dimming ballast within ceiling canopy.

**Lamps:** (1) CF18DD/E/835/ECO

**Manufacturers:** *Tech Lighting # Echo 700TDECP-S-X-X-CF277*

---



**Dimensions: Diameter = 11" Diffuser Height = 9.4"**

**Type: R1**

**Description:** Suspended luminaire with soda-lime glass diffuser with translucent acrylic coating. Consult Architect for pendant cable length.

**Lamps:** (1) CF42DT/E/835

**Manufacturers:** *Prisma Lighting # OPTA-28-073740/2787*

---



**Dimensions: Diameter = 10.5" Diffuser Height = 14.5"**

**Type: R2**

**Description:** Suspended luminaire with opal acrylic diffuser with etched lower band and decorative bottom glass disc. Consult Architect for pendant cable length.

**Lamps:** (1) CF42DT/E/835

**Manufacturers:** *Beta Calco # 44 0930/C1*

---

**Dimensions: Diameter = 10.5" Diffuser Height = 14.5"**

**Type: R2E**

**Description:** Identical to Type R2 except with integral emergency battery rated to operate fixture for 90 minutes upon loss of normal power.

**Lamps:** (1) CF42DT/E/835

**Manufacturers:** *Beta Calco # 44 0930/EM/C1*

---



**Dimensions: Diameter = 59.1" Luminaire Height = 8.1"**

**Type: R3**

**Description:** Suspended luminaire with indirect/direct distribution. Luminaire shall be suspended with aircraft cable to a height as directed by the Architect. Luminaire shall include a bottom opal polycarbonate diffuser with a polyurethane shade in a color to be selected by the Architect. Luminaire shall include integral electronic non-dimming ballasts.

**Lamps:** (10) FT55DL/835/ECO

**Manufacturers:** *Targetti Lighting* # ERCOLE 59.1 10/55W/CF 2611 120-277 X UP/DOWN

---

**Dimensions: Diameter = 49.1" Luminaire Height = 7.9"**

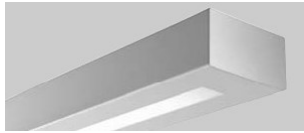
**Type: R4**

**Description:** Similar to Type R3 except smaller in diameter.

**Lamps:** (10) FT36DL/835/ECO

**Manufacturers:** *Targetti Lighting* # ERCOLE 59.1 10/36W/CF 2611 120-277 X UP/DOWN

---



**Dimensions: Length = 8'-0" Luminaire Height = 2 1/4"**

**Type: R5**

**Description:** Suspended luminaire with indirect/direct distribution, and shall be suspended with aircraft cable to a height as directed by the Architect. Luminaire shall include a bottom flat acrylic panel diffuser. Luminaire finish color shall be selected by the Architect. Luminaire shall include integral electronic non-dimming ballast.

**Lamps:** (2) FP28/835/ECO

**Manufacturers:** *Ledalite* # 7505-F01-Q-N-04-1-2-E-X

---



**Dimensions: Diameter = 11.5" Luminaire Height = 5.2"**

**Type: R6**

**Description:** Suspended luminaire with direct distribution. Luminaire shall be suspended with aircraft cable to a height as directed by the Architect. Luminaire shall include a bottom blown glass opal diffuser with a polyurethane shade in a color to be selected by the Architect. Luminaire shall include integral electronic non-dimming ballasts.

**Lamps:** (1) CF32DT/E/IN/835/ECO

**Manufacturers:** *Targetti Lighting* # NUDA 11.5 1/32W/CF GX24q-3 120-277V-X-X

---



**Dimensions:** Width = 5.5” Height = 5.75” Length = 10’- 0”

**Type:** R7

**Description:** LED wall wash strip light with integral reflector, cool white LED lamps, and an integral driver. Luminaire shall be installed within built architectural ceiling cove as detailed on the architectural drawings. Provide a continuous 10 foot overall length.

**Lamps:** LED (by manufacturer)

**Manufacturers:** *PureLighting* # SH10-3-SP10-CW

---



**Dimensions:** Diameter = 1.9” Luminaire Height = 6.3”

**Type:** R8

**Description:** Suspended luminaire with cylindrical satin nickel shade. Luminaire shall be suspended with white cable to a height as directed by the Architect. Provide a remote power supply unit to be installed in Closet 518.

**Lamps:** (1) 50T4Q/CL/AX

**Manufacturers:** *Inter-Lux/Steng* # KLB-NS-MNS-GWS-10 (luminaire)

*Q-Tran* # Q6S-300DT-277/12V-3x20+CK-S+JBP (power supply unit)

---



**Dimensions:** Diameter = 3.94” Diffuser Height = 15.57”

**Type:** R9

**Description:** Suspended luminaire with frosted cylinder diffuser and satin chrome trim finish. Suspend luminaire with adjustable aircraft cable so that bottom of luminaire is equal to acrylic ceiling panel.

**Lamps:** (1) CF26DD/E/835

**Manufacturers:** *Eureka Lighting* # 4233-XB CFR C CF.T.32

---



**Dimensions:** Length = 21.3” Width = 2.5”

**Type:** SA

**Description:** Undercabinet light with 12-ft low voltage power cable with inline switch, 6” patch cable, cable management clips, and a dedicated 21-watt power supply. Luminaire shall be rated 120 volts.

**Lamps:** (6) 1-watt LED (by manufacturer)

**Manufacturers:** *Finelite* # UC-6W-S

---





**Dimensions: Length = 14 5/8" Height = 8 7/8" Projection = 13"**

**Type: S1**

**Description:** Wall mounted area light with flush, flat diffuser lens to provide full cut-off optics. Luminaire internal reflector shall provide type IV distribution. Luminaire housing shall be made of die-cast, low copper aluminum alloy. Luminaire shall be UL listed for wet locations. Luminaire finish color shall be black. Mount luminaire at height as indicated on the plans.

**Lamps:** (1) MP150/U/MED

**Manufacturers:** *Kim Lighting # WD14D4/150PMH277/BL*

**Dimensions: Length = 14 5/8" Height = 8 7/8" Projection = 13"**

**Type: S2**

**Description:** Identical to Type S1 except with type III distribution.

**Lamps:** (1) MP150/U/MED

**Manufacturers:** *Kim Lighting # WD14D3/150PMH277/BL*



**Luminaire Dimensions: Width = 15" Projection = 26 15/16"**

**Type: S3**

**Description:** Pole mounted area light with flush, flat diffuser lens to provide full cut-off optics. Luminaire internal LED array shall provide type IV distribution. Luminaire housing shall be made of die-cast, low copper aluminum alloy. Luminaire shall be UL listed for wet locations. Luminaire and pole finish color shall be black. Mount luminaire on a 20 foot tall round straight aluminum pole.

**Lamps:** (60) LED (by manufacturer)

**Manufacturers:** *Kim Lighting # ISA/WP9LE4/L5K277/BL (luminaire)*  
*Kim Lighting # PRA20-4188/BL A/SA*

**Luminaire Dimensions: Width = 15" Projection = 26 15/16"**

**Type: S4**

**Description:** Identical to Type S3 except wall mounted. Mount at height as indicated on plans.

**Lamps:** (60) LED (by manufacturer)

**Manufacturers:** *Kim Lighting # ISA/WP9LE4/L5K277/BL-IW (luminaire)*

**Type: T1**

**Description:** Wall mounted, low-voltage single circuit track lighting system. Track finish shall be satin nickel. Provide straight and curved track profiles in lengths as indicated on drawings. Provide all necessary fittings and hanging components to make a complete track system. Install transformers at locations as indicated on the plans.

**Lamps:** (1)

**Manufacturers:** *Tech Lighting #700WMOS-S/700MOA-S/XX (track)*  
*Q-Tran # Q6S-300DT-277/12V-3x20+CK-S+JBP (transformer for 4, 3, or 5 lighting heads)*  
*Q-Tran # Q6S-150DT-277/12V-3x20+CK-S+JBP (transformer for 2 lighting heads)*



**Luminaire Dimensions: Projection = 18"**

Type: T2

Description: Track lighting head to be installed on Type T1 lighting track. Luminaire finish shall be satin nickel. Luminaire shall include a front face lens holder with a UV filter. Provide quantity of luminaires as shown at each location on the plans.

Lamps: (1)

Manufacturers: *TechLighting* # GEORGI 700WMGRG-S/700A06-CH/140UV-MR16



**Luminaire Dimensions: Projection = 2.3"**

Type: T3

Description: Track lighting head to be installed on a mono-point base with an integral transformer. Luminaire finish shall be satin nickel. Luminaire shall include a front face lens holder with a UV filter.

Lamps: (1)

Manufacturers: *TechLighting* # CAM 700-FJ-36-S/700A06-CH/140UV-MR16 (lighting head)  
*Tech Lighting* # 700FJ4RF-S (mono-point base)

**Dimensions: Height= 56.8" Width = 2.75" Projection =4"**

Type: WC

Description: Decorative wall sconce with cast aluminum housing and white acrylic cylindrical diffuser.

Lamps: (2) FP14/835/ECO

Manufacturers: *LumenArt* # STD-2X14-277V-AC



**Dimensions: Length= 4'- 0" Width = 1.25" Arm Length = 18"**

Type: W1

Description: Small-profile cantilevered wall mounted luminaire with white acrylic lens. Luminaire shall include rotating arm bracket with custom cover plate. Consult Architect for mounting height.

Lamps: (1) FP54/835/HO/ECO

Manufacturers: *Birchwood* # KEL-125-RAB-1-T5HO-CR4'-2-EB-BZ-SIC (luminaire)  
*Birchwood* # RAB-HAI125-18-CMP/2"SQ/CCP-MF (bracket arms)

**Dimensions: Length= 94 1/8" Width = 1.25" Arm Length = 18"**

Type: W2

Description: Similar to Type W1 except 8 foot long.

Lamps: (2) FP54/835/HO/ECO

Manufacturers: *Birchwood* # KEL-125-RAB-1-T5HO-CR8'-2-EB-BZ-SIC (luminaire)  
*Birchwood* # RAB-HAI125-18-CMP/2"SQ/CCP-MF (bracket arms)  
*Birchwood* # EX2B-A-WO-T5-1-1-XX-WA-UNV-1C-CC-DG

Types: **W – W4**      **Not Used**

**Dimensions:**      **Length= (as indicated on plans)    Width = 1.25"**  
**Arm Length = 30"**

Type: **W5A**

Description:      Similar to Type W1 except stack mounted and with 30-inch extension arms. Provide continuous lengths as indicated on the plans. See architectural drawings for mounting details.

Lamps:              FP54/835/HO/ECO and/or FP39/835/HO/ECO and/or FP24/835/HO/ECO  
 (use lamp configurations as required to make up lengths as indicated on plans)

Manufacturers: *Birchwood # KEL-125-STKSS-T5HO-CRXX-2-EB-SC-SIC (luminaire)*  
*Birchwood # STKSS-KEL125-SA-CU30"-MF-CU (bracket arms)*

**Dimensions:**      **Length= (as indicated on plans)    Width = 1.25"**  
**Arm Length = 30"**

Type: **W5B**

Description:      Similar to Type W1 except stack mounted and with 42-inch extension arms. Provide continuous lengths as indicated on the plans. See architectural drawings for mounting details.

Lamps:              FP54/835/HO/ECO and/or FP39/835/HO/ECO and/or FP24/835/HO/ECO  
 (use lamp configurations as required to make up lengths as indicated on plans)

Manufacturers: *Birchwood # KEL-125-STKSS-T5HO-CRXX-2-EB-SC-SIC (luminaire)*  
*Birchwood # STKSS-KEL125-SA-CU42"-MF-CU (bracket arms)*



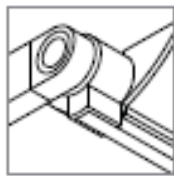
**Dimensions:**      **Overall Length= 12'- 0"    Width = 1.25"**  
**Arm Length = 9"**

Type: **W6**

Description:      Small-profile cantilevered stack mounted luminaire with white acrylic lens and dual straight extension arms. See architectural drawings for mounting details.

Lamps:              (8) FP39/835/HO/ECO

Manufacturers: *Birchwood # KEL-125-STKDS-T5HO-CR12'-2-EB-SC-SIC (luminaire)*  
*Birchwood # STKDS-KEL125-9-MF-CU (bracket arms)*



**Dimensions:**      **Length= 4'-0"    Arm Projection = 3"**

Type: **W7**

Description:      Small-profile surface wall mounted linear luminaire with indirect/direct lighting distribution. Luminaire shall include white acrylic front face diffuser. Luminaire finish shall be aluminum. Mount luminaire to beam face as directed by Architect.

Lamps:              (1) FP54/830/HO/ECO

Manufacturers: *Vode Lighting # BE-K1-A-ST-3-IB-A-HO4'-A-QF*

Types: **W8 – W10 Not Used**

---



**Dimensions: Length= 23.2” Height = 2.9” Projection =2.4”**

Type: **W11**

Description: Surface wall light with indirect/direct distribution. Luminaire shall include a white aluminum face shield. Install luminaire at height as indicated by Architect.

Lamps: (1) FP14/835/ECO

Manufacturers: *Inter-Lux/Schmitz* # 18137.25

---

**Dimensions: Length= 46.4” Height = 2.9” Projection =2.4”**

Type: **W12**

Description: Similar to Type W12 except with two tandem lengths with a continuous 4 foot fascia.

Lamps: (2) FP14/835/ECO

Manufacturers: *Inter-Lux/Schmitz* # MOD-18137.25

---



**Dimensions: Length= 15 3/8” Height = 11 5/8”**

Type: **X1**

Description: Wall mounted, single sided exit sign with edge-lit clear face panel. Luminaire housing shall have stainless steel finish. Letters shall be red. Provide directional arrows as indicated on the plans. Exit sign shall include an integral battery rated to operate the sign for 90 minutes upon loss of normal power.

Lamps: LED (by manufacturer)

Manufacturers: *Alkco* # WGLO-LED-X-RC/SS

---

**Dimensions: Length= 17 1/8” Projection = 8”**

Type: **X2**

Description: Similar to type X1 except suspended with stem.

Lamps: LED (by manufacturer)

Manufacturers: *Alkco* # SGLO-LED-X1-R/SS/PGL02-RC

---

**Dimensions: Length= 17 1/8” Projection = 8”**

Type: **X3**

Description: Similar to type X1 except recessed ceiling mount with double face.

Lamps: LED (by manufacturer)

Manufacturers: *Alkco* # RGLO-LED-X2-R/SS/PGL02-RC

---