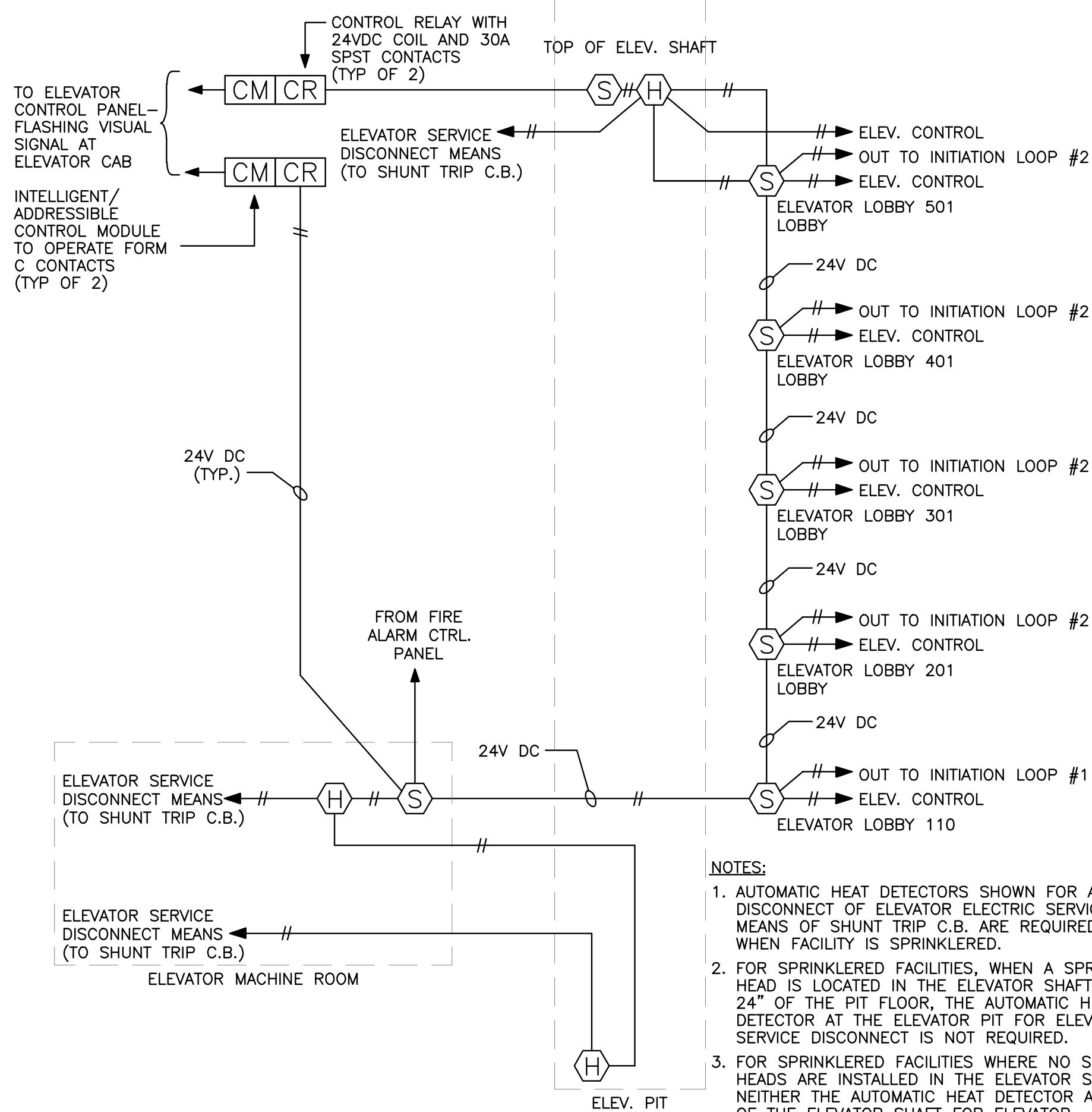


INSTALL DUCT DETECTORS IN CONFORMANCE WITH NFPA 90A
 PROVIDE SINGLE DUCT DETECTOR FOR HVAC UNITS SIZED 2000 CFM - 4000 CFM.
 PROVIDE DUCT DETECTORS IN BOTH SUPPLY AND RETURN DUCTS FOR HVAC UNITS
 SIZED ABOVE 4000 CFM.

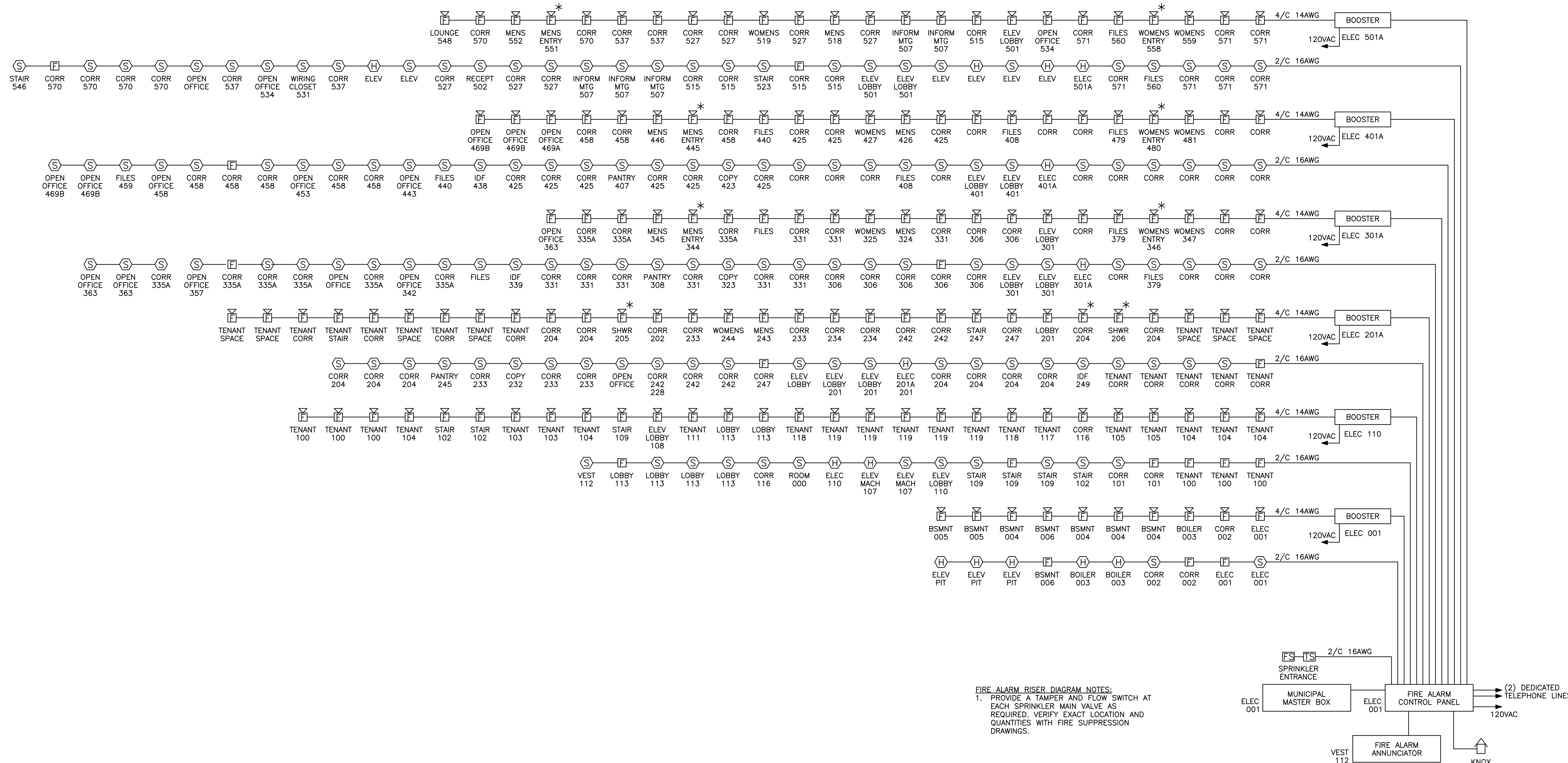
SCALE: NONE HVAC FIRE ALARM INTERFACE WIRING DIAGRAM 3



- NOTES:
1. AUTOMATIC HEAT DETECTORS SHOWN FOR AUTOMATIC DISCONNECT OF ELEVATOR ELECTRIC SERVICE BY MEANS OF SHUNT TRIP C.B. ARE REQUIRED ONLY WHEN FACILITY IS SPRINKLERED.
 2. FOR SPRINKLERED FACILITIES, WHEN A SPRINKLER HEAD IS LOCATED IN THE ELEVATOR SHAFT WITHIN 24" OF THE PIT FLOOR, THE AUTOMATIC HEAT DETECTOR AT THE ELEVATOR PIT FOR ELEVATOR SERVICE DISCONNECT IS NOT REQUIRED.
 3. FOR SPRINKLERED FACILITIES WHERE NO SPRINKLER HEADS ARE INSTALLED IN THE ELEVATOR SHAFT, NEITHER THE AUTOMATIC HEAT DETECTOR AT THE TOP OF THE ELEVATOR SHAFT FOR ELEVATOR DISCONNECT, NOR THE AUTOMATIC SMOKE DETECTOR AT THE TOP OF THE ELEVATOR ARE REQUIRED.
 4. TYPICAL FOR EACH ELEVATOR.

INSTALL DETECTORS AND WIRING IN CONFORMANCE WITH STATE ELEVATOR CODE.

SCALE: NONE ELEVATOR FIRE ALARM INTERFACE WIRING DIAGRAM 2



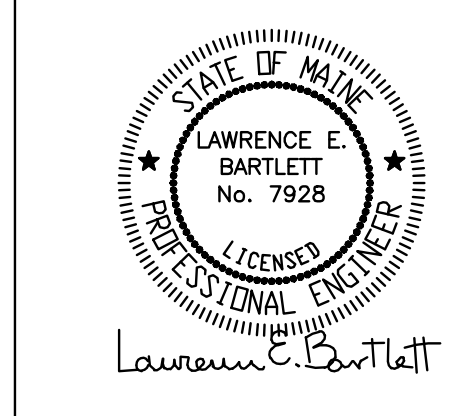
- FIRE ALARM RISER DIAGRAM NOTES:
1. PROVIDE A TAMPER AND FLOW SWITCH AT EACH SPRINKLER MAIN VALVE AS REQUIRED. VERIFY EXACT LOCATION AND QUANTITIES WITH FIRE SUPPRESSION DRAWINGS.

SCALE: NONE FIRE ALARM RISER DIAGRAM 1

REV #	DATE	DESCRIPTION

Renovations To:
CUMBERLAND COLD STORAGE BUILDING
 Merrill's Wharf, Portland, Maine

FIRE ALARM
 RISER DIAGRAMS
E3.2
 09.23.2010



Blais Civil Engineers, PA
 780 Broadway
 South Portland, ME 04106
 T. 207.767.7300
 sbblaise@blaisce.com

Bartlett Design
 942 Washington Street
 Bath, ME 04530
 T. 207.443.5447
 bartdes@blazenetme.net

Mechanical Systems Engineers
 Royal River Center, Unit #10
 10 Forest Falls Drive, Yarmouth, ME 04096
 T. 207.846.1441 F. 207.846.1443

Carroll Associates Landscape Architects
 217 Commercial Street, Suite 200
 Portland, ME 04101
 T. 207.772.1552 F. 207.0712

Becker Structural Engineers, Inc.
 75 York Street
 Portland, ME 04101
 T. 207.879.1838 F. 207.879.1822
 www.beckerstructural.com

Winton Scott Architects, PA
 5 Milk Street
 Portland, ME 04101
 T. 207.774.4811
 www.wintonscott.com

Permit Set
 Not For Construction