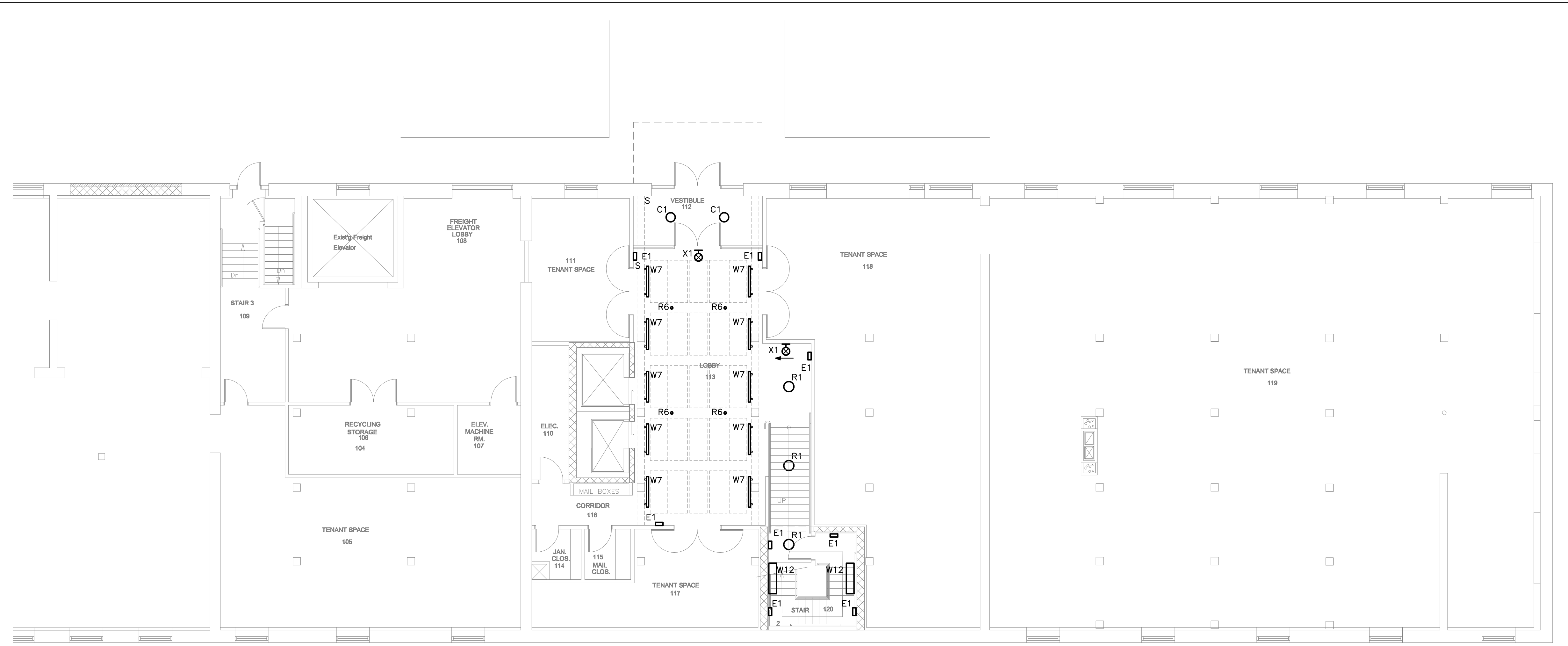
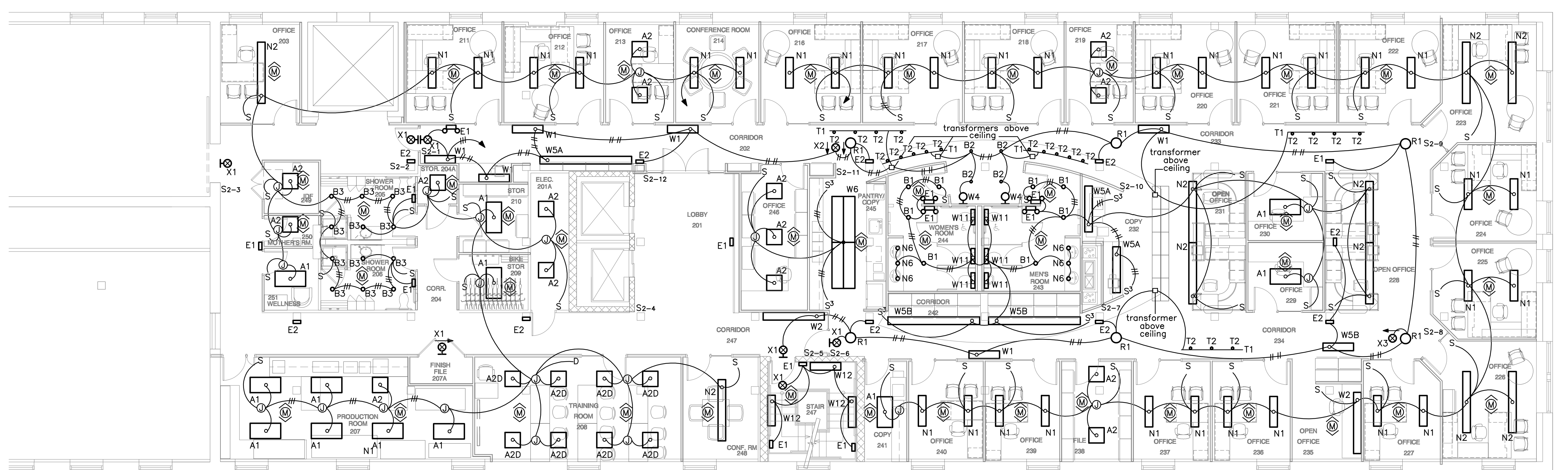


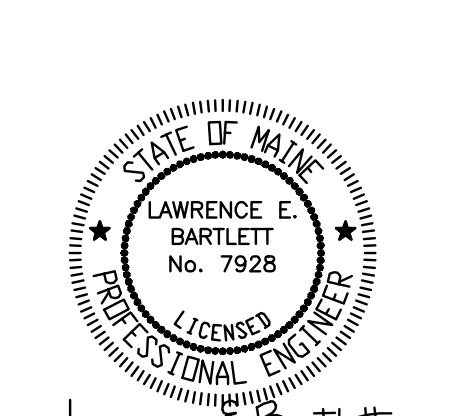
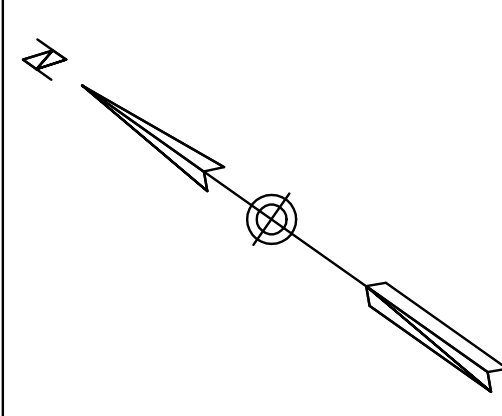
SCALE: 1/8" = 1'-0" PARTIAL BASMENT POWER PLAN 2



SCALE: 1/8" = 1'-0" PARTIAL FIRST FLOOR POWER PLAN 1



SCALE: 1/8" = 1'-0" PARTIAL SECOND FLOOR LIGHTING PLAN 3



Blais Civil Engineers, PA
780 Broadway
South Portland, ME 04106
T. 207.767.7300
sblaise@blaiscec.com

Bartlett Design
942 Washington Street
Bath, ME 04530
T. 207.443.5447 F. 207.443.5560
bartdes@blaisenme.net

Mechanical Systems Engineers
Royal River Center, Unit #10
10 Forest Falls Drive, Yarmouth, ME 04096
T. 207.846.1441 F. 207.846.1443

Carroll Associates Landscape Architects
217 Commercial Street, Suite 200
Portland, ME 04101
T. 207.772.1552 F. 207.0712

Becker Structural Engineers, Inc.
75 York Street
Portland, ME 04101
T. 207.879.1836 F. 207.879.1822
www.beckerstructural.com

Winton Scott Architects, PA
5 Milk Street
Portland, ME 04101
T. 207.774.4811
www.wintonscott.com

REV #	DATE	DESCRIPTION

Renovations To:
CUMBERLAND COLD STORAGE BUILDING
Merrill's Wharf, Portland, Maine

Permit Set
Not For Construction

PARTIAL
BASEMENT FIRST
& SECOND FLOOR
LIGHTING PLANS
E2.1
09.23.2010