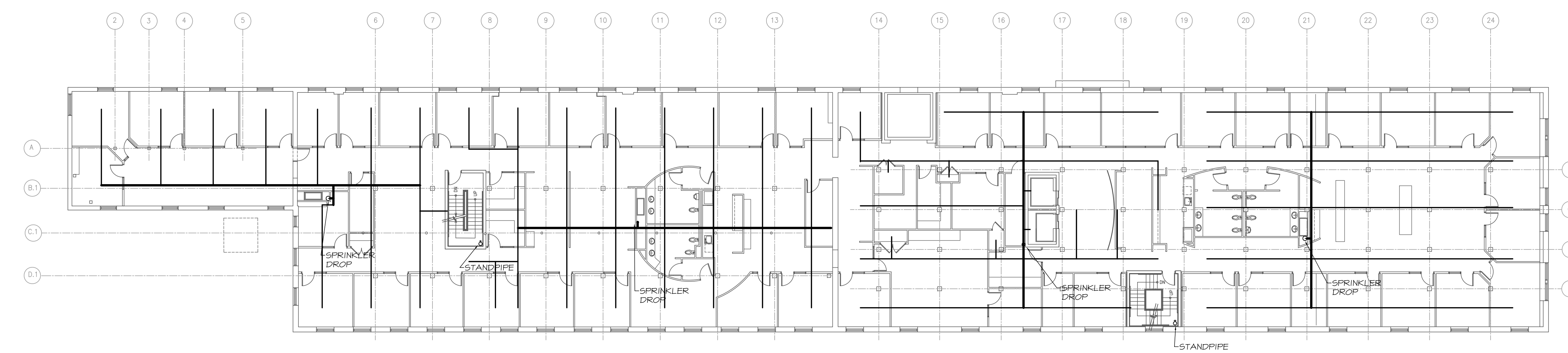
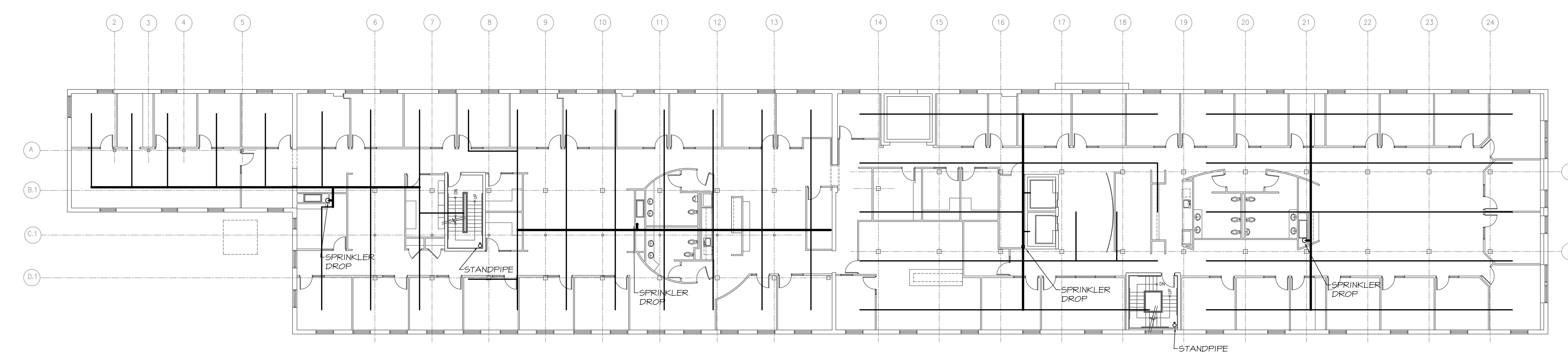


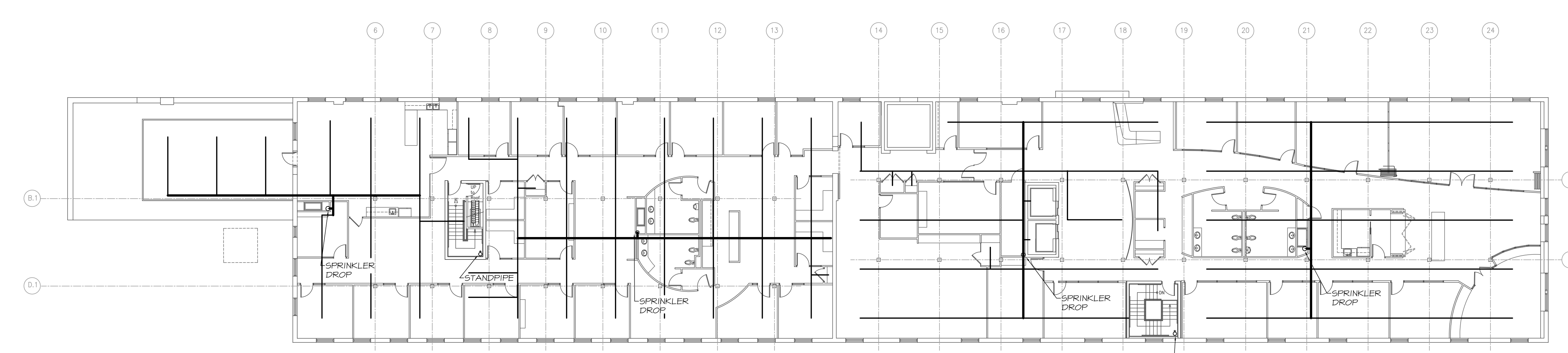
NOTE: THESE PLANS ARE FOR CONCEPT ILLUSTRATION ONLY TO AID THE SPRINKLER DESIGN / BUILD CONTRACTOR IN UNDERSTANDING SOME OF THE SPACE LIMITATIONS. THE PIPE LOCATIONS ARE APPROXIMATE AND FINAL LAYOUT IS THE RESPONSIBILITY OF THE SPRINKLER CONTRACTOR.



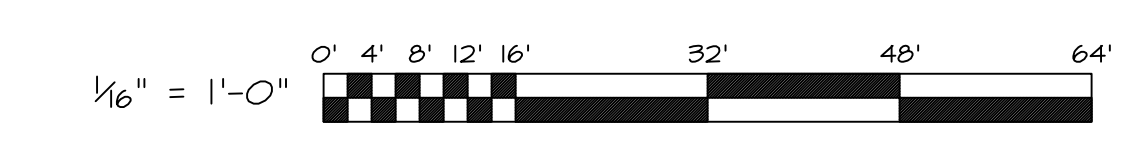
**THIRD FLOOR SPRINKLER CONCEPT PLAN**  
SCALE: 1/16" = 1'-0"



**FOURTH FLOOR SPRINKLER CONCEPT PLAN**  
SCALE: 1/16" = 1'-0"



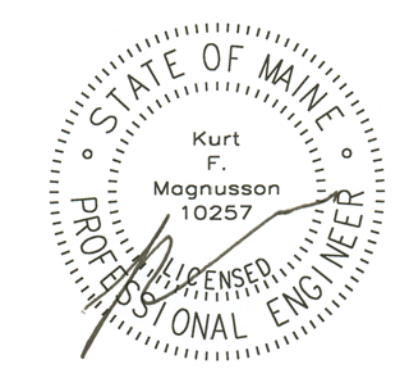
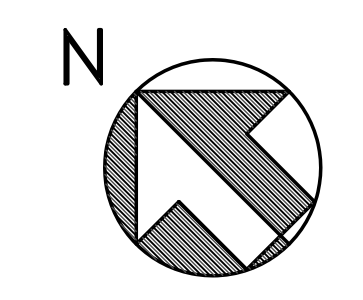
**FIFTH FLOOR SPRINKLER CONCEPT PLAN**  
SCALE: 1/16" = 1'-0"



PERMIT SET  
NOT FOR  
CONSTRUCTION

**MECHANICAL SYSTEMS ENGINEERS**  
ROYAL RIVER CENTER, UNIT #10  
10 FOREST FALLS DRIVE  
YARMOUTH, MAINE 04096  
VOICE: (207) 846-1441  
FAX: (207) 846-1443  
© COPYRIGHT 2010  
M.S.E. Proj. 1020

September 22, 2010 - 1:42 pm  
\\Merri\Projects\Drawings\1020 SP1-SP2.dwg



**Blais Civil Engineers, PA**  
780 Broadway  
South Portland, Maine 04106  
T. 207.767.7300  
sblaise@blaisece.com

**Bartlett Design**  
942 Washington Street  
Bath, Maine 04530  
T. 207.443.5447 F. 207.443.5560  
bartdes@blazenetme.net

**Mechanical Systems Engineers**  
Royal River Center, Unit #10  
10 Forest Falls Drive, Yarmouth, Maine 04096  
T. 207.846.1441 F. 207.846.1443

**Carroll Associates Landscape Architects**  
217 Commercial Street, Suite 200  
Portland, Maine 04101  
T. 207.772.1552 F. 207.772.0712

**Becker Structural Engineers, Inc.**  
75 York Street, Portland, Maine 04101  
T. 207.879.1838 F. 207.879.1822  
www.beckerstructural.com

**Winton Scott Architects, PA**  
5 Milk Street, Portland, Maine 04101  
207.774.4811 www.wintonscott.com

REV #	DATE	DESCRIPTION

Renovations To:  
**CUMBERLAND COLD STORAGE BUILDING**  
Merrill's Wharf, Portland, Maine

SPRINKLER  
CONCEPT PLANS

**SP2**