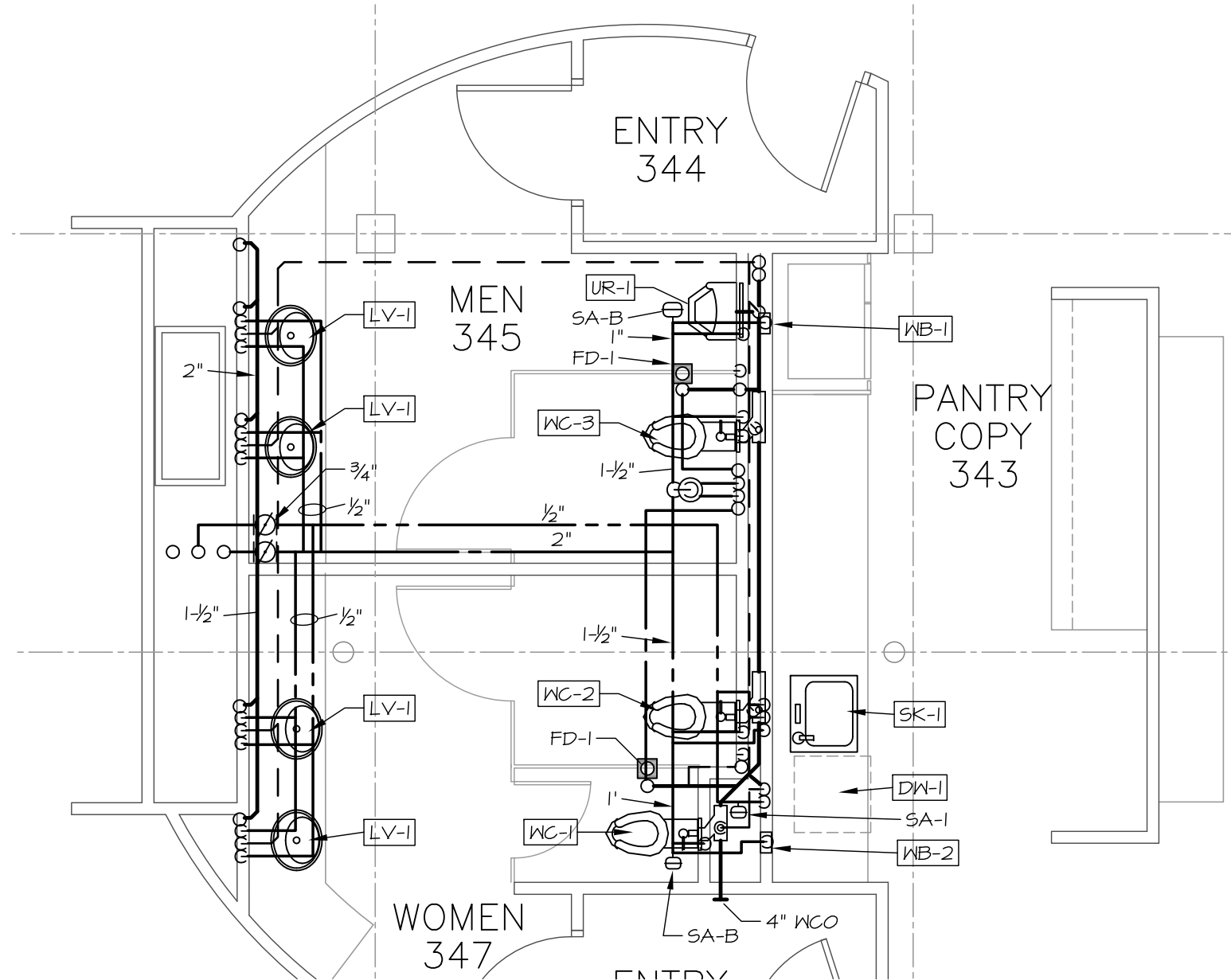


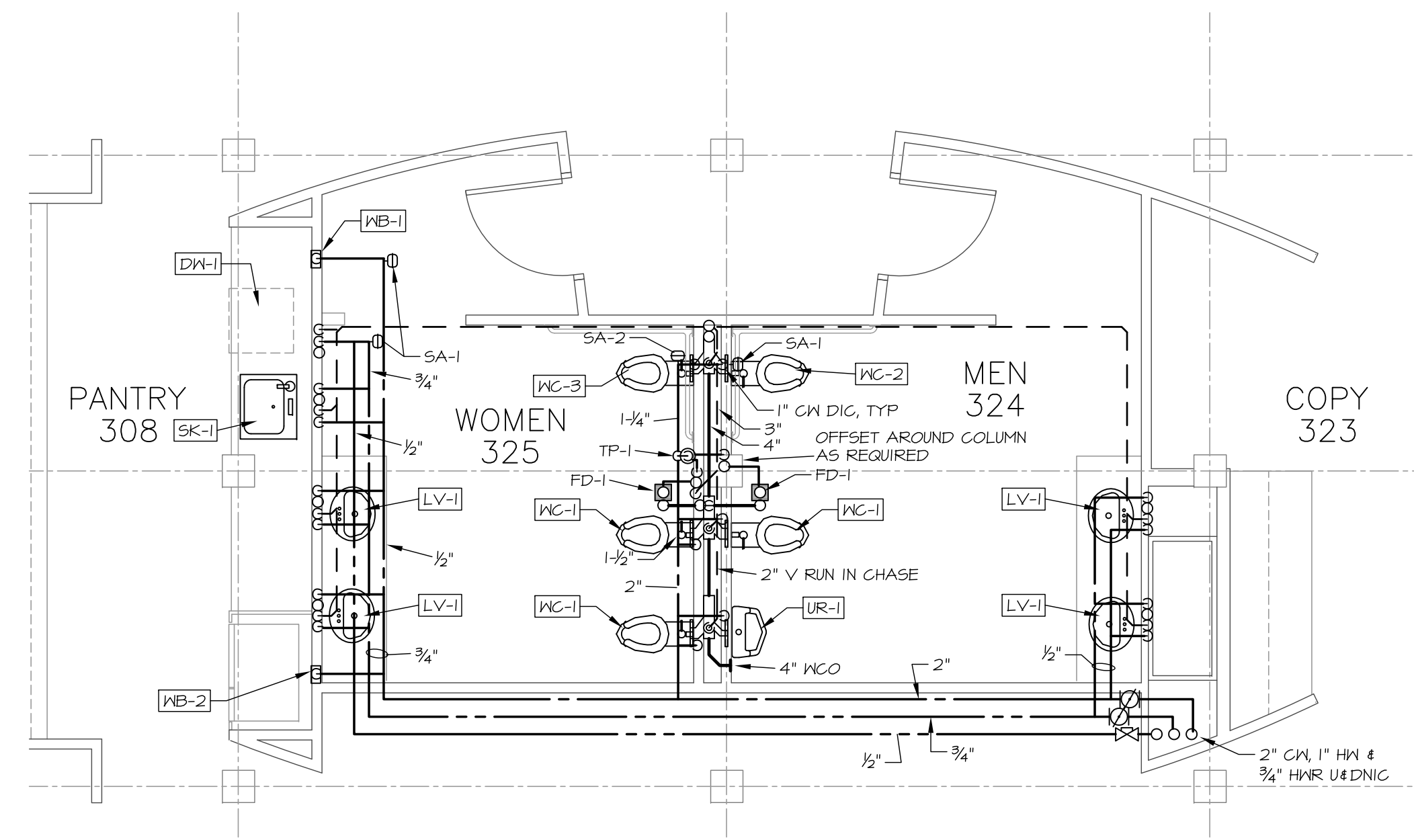
3RD FLOOR PLUMBING PLAN

SCALE: 1/8" = 1'-0"



GROUP BATHROOMS PLUMBING PLAN

SCALE: 1/4" = 1'-0"



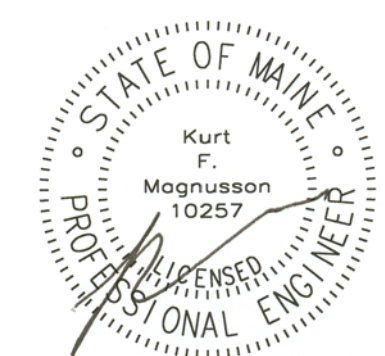
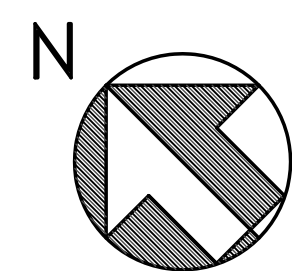
GROUP BATHROOMS PLUMBING PLAN

SCALE: 1/4" = 1'-0"



**MECHANICAL SYSTEMS ENGINEERS**  
 ROYAL RIVER CENTER, UNIT #10  
 10 FOREST FALLS DRIVE  
 YARMOUTH, MAINE 04096  
 VOICE: (207) 846-1441  
 FAX: (207) 846-1443  
 © COPYRIGHT 2010  
 M.S.E. Proj. 1020

September 22, 2010 - 12:49 pm \\Merrill\Projects\1020\_Cumberland Cold Storage Drawings\1020\_P1-P7.dwg



**Blais Civil Engineers, PA**  
 780 Broadway  
 South Portland, Maine 04106  
 T. 207.767.7300  
 sblaise@blaise.com

**Bartlett Design**  
 942 Washington Street  
 Bath, Maine 04530  
 T. 207.443.5447 F. 207.443.5560  
 bartdes@blazenetme.net

**Mechanical Systems Engineers**  
 Royal River Center, Unit #10  
 10 Forest Falls Drive, Yarmouth, Maine 04096  
 T. 207.846.1441 F. 207.846.1443

**Carroll Associates Landscape Architects**  
 217 Commercial Street, Suite 200  
 Portland, Maine 04101  
 T. 207.772.1552 F. 207.772.0712

**Becker Structural Engineers, Inc.**  
 75 York Street, Portland, Maine 04101  
 T. 207.879.1838 F. 207.879.1822  
 www.beckerstructural.com

**Winton Scott Architects, PA**  
 5 Milk Street, Portland, Maine 04101  
 207.774.4811 www.wintonscott.com

REV #	DATE	DESCRIPTION

Renovations To:  
**CUMBERLAND COLD STORAGE BUILDING**  
 Merrill's Wharf, Portland, Maine

3rd FLOOR PLUMBING PLAN

**P4**

9.23.2010