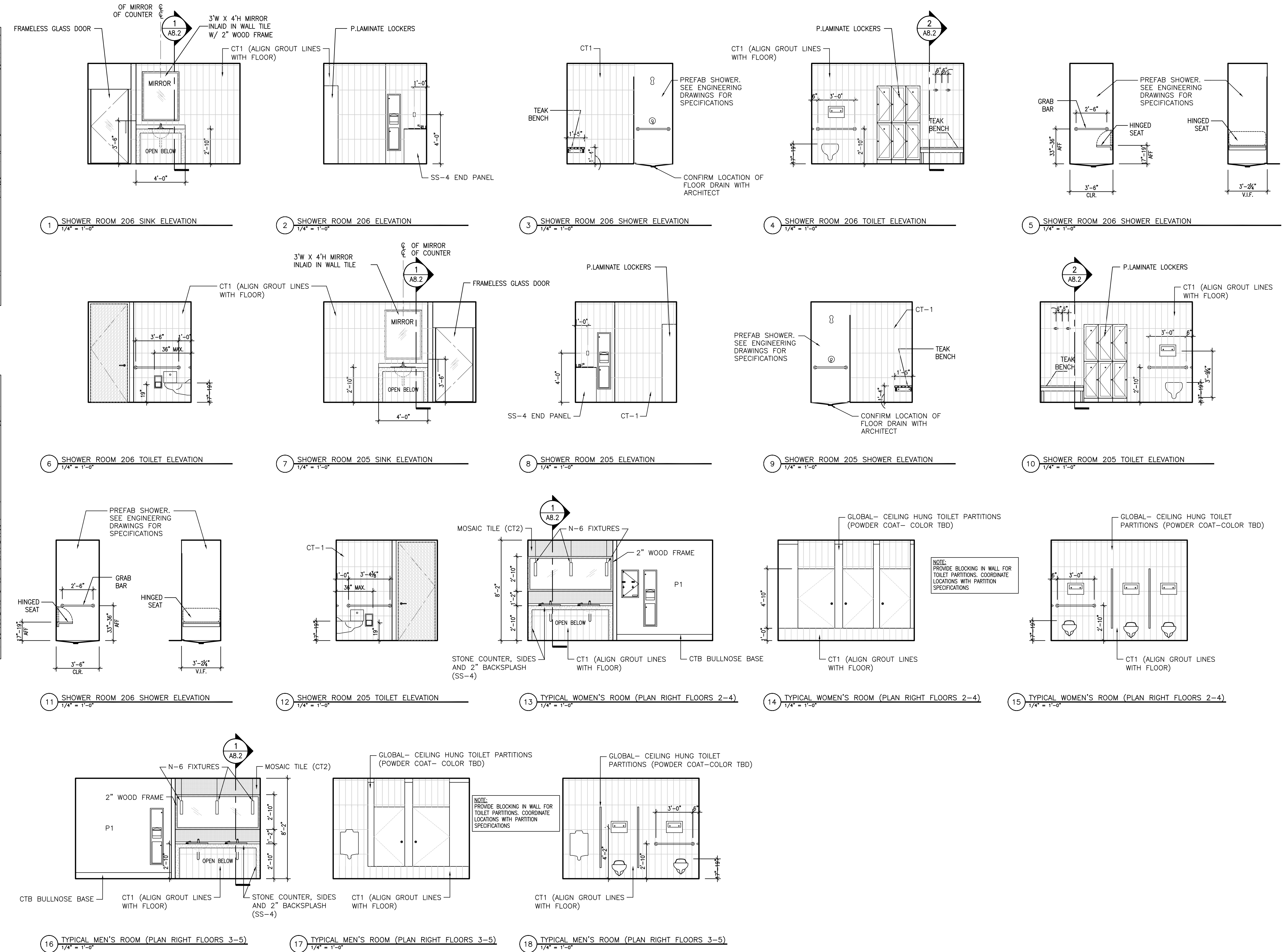


TYPICAL ELEVATIONS



FINISH SPECIFICATIONS

FLOOR FINISH	
CT	MANUFACTURER: CREATIVE MATERIALS/ BRUSH STROKE STYLE: BEIGE STROKE COLOR: S557 SIZE: 12"X24" NOTES: ALL RESTROOMS, SEE ELEVATIONS FOR LOCATIONS
WALL FINISH	
PT1	MANUFACTURER: BENJAMIN MOORE NUMBER: NAVAJO WHITE- OC-93 NOTES: GENERAL PAINT
CT1	MANUFACTURER: CREATIVE MATERIALS/BRUSH STROKE STYLE: BEIGE STROKE COLOR: S557 SIZE: 6"X24" NOTES: ALL RESTROOMS, SEE ELEVATIONS FOR LOCATIONS
CT2	MANUFACTURER: OCCASIDE GLASS TILE STYLE: TESSERA FIELD COLOR: COPPERTONE BLEND (#06,#08,#957) NOTES: ALL RESTROOMS, SEE ELEVATIONS FOR LOCATIONS
WALL BASE FINISH	
CTB	6"X24" BULLNOSE WALL BASE MANUFACTURER: CREATIVE MATERIALS/ BRUSH STROKE STYLE: BEIGE STROKE COLOR: S557 SIZE: 6"X24" NOTES: ALL RESTROOMS
MILLWORK FINISH	
SS-4	MANUFACTURER: CELADOR COLOR: #101/ WHITE POLISHED FINISH NOTES: BATHROOM COUNTERS

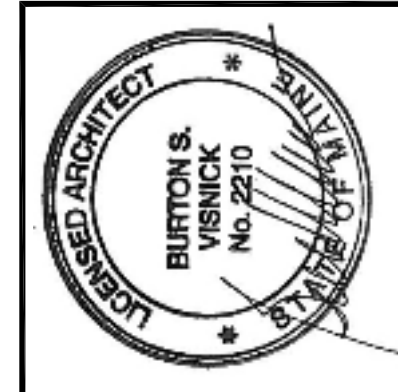
ACCESSORIES SPECIFICATIONS

TA-1	SURFACE MOUNTED MULTI-ROLL TOILET TISSUE DISPENSER. BOBRICK, B-7686
TA-2	SURFACE MOUNTED PAPER TOWEL DISPENSER AND WASTE RECEPTACLE. BOBRICK, B-380349
TA-3	LAVATORY-MOUNTED AUTOMATIC SOAP DISPENSER. BOBRICK, B-826.18
TA-4	SURFACE MOUNTED SANITARY NAPKIN DISPOSAL BOBRICK, B-354
TA-5	SURFACE MOUNTED SANITARY NAPKIN VENDOR. BOBRICK, B-280025
TA-6	STAINLESS STEEL GRAB BAR BOBRICK, B-68137
TA-7	CEILING HUNG TOILET PARTITIONS MANUFACTURER: GLOBAL PARTITIONS COLOR: POWDER COAT, COLOR TBD NOTES: ALL DOORS SHALL HAVE COAT HOOK. LOCATION: ALL RESTROOMS ON FLOORS 2,3 & 4. REFER TO ELEVATIONS
TA-8	FULL HEIGHT PLASTIC LAMINATE TOILET PARTITIONS MANUFACTURER: AUTOMATION SOLUTIONS INC. THRUSLINGTON "OASIS FULL HEIGHT" COLOR: LAMINART, COLOR TBD NOTES: ALL DOORS SHALL HAVE COAT HOOK LOCATION: RESTROOMS ON FLOOR 5 ONLY
TA-9	LOCKERS MANUFACTURER: AUTOMATION SOLUTIONS, INC PROSPEC LAMINATE LOCKERS WITH ALUMINUM BODIES COLOR: LAMINART, COLOR TBD LOCKS: ALUMINUM HASP AND CLASP

ARCHITECTURAL NOTES

- METHOD FOR DIMENSIONING WALLS & OPENINGS: FINISH FACE TO FINISH FACE, UNLESS NOTED OTHERWISE.
 - PROVIDE WATER RESISTANT GYP. BD. ON ROOM SIDE FOR TOILET ROOMS
 - REFER TO MECHANICAL AND PLUMBING DRAWINGS FOR ADDITIONAL NOTES.
 - REFER TO ELECTRICAL DRAWINGS FOR POWER IN THESE ROOMS.
 - PROVIDE IN WALL BLOCKING IN ALL RESTROOMS FOR TOILET PARTITIONS. COORDINATE WITH SPECIFICATIONS.
- | | |
|-------|---|
| TA-10 | ROBE/COAT HOOK
BOBRICK, B-672 |
| TA-11 | ADA UNDERCOUNTER SINK & FAUCET
SEE ENGINEER'S DRAWING FOR SPECIFICATION |
| TA-12 | WALL HUNG ELONGATED TOILET
SEE ENGINEER'S DRAWING FOR SPECIFICATION |
| TA-13 | WALL HUNG URINAL
SEE ENGINEER'S DRAWING FOR SPECIFICATION |
| TA-14 | RECESSED MIRROR
SIZE: REFER TO ELEVATIONS
FRAME: 2" WOOD (CHERRY) FRAME
COLOR: LAMINART, COLOR TBD |
| TA-15 | SURFACE MOUNTED SEAT COVER DISPENSER
BOBRICK, B-221 |
| TA-16 | PREFABRICATED SHOWER
SEE ENGINEER'S DRAWINGS FOR SPECIFICATION |
| TA-17 | FRAMELESS PIVOT CLEAR GLASS SHOWER DOOR
KOHLER, K-702013-L-BN |

VISNICK & CAULFIELD ASSOCIATES, INC.
ARCHITECTS & INTERIOR DESIGNERS
500 BOSTON STREET, 2ND FLOOR
PORTLAND, ME 04101
PH: 617.487.0990 FX: 617.487.0988



PROJECT
PIERCE ATWOOD
WATERFRONT
PORTLAND, MAINE

NO.	DATE	REVISION

TITLE
RESTROOM PLANS AND TYPICAL ELEVATIONS
SCALE: 1/4" = 1'-0"
DATE: 09.23.10
PROJECT NO.: 2010.063
DRAWN AD: CHK: RC

DRAWING NO.
A-8.1