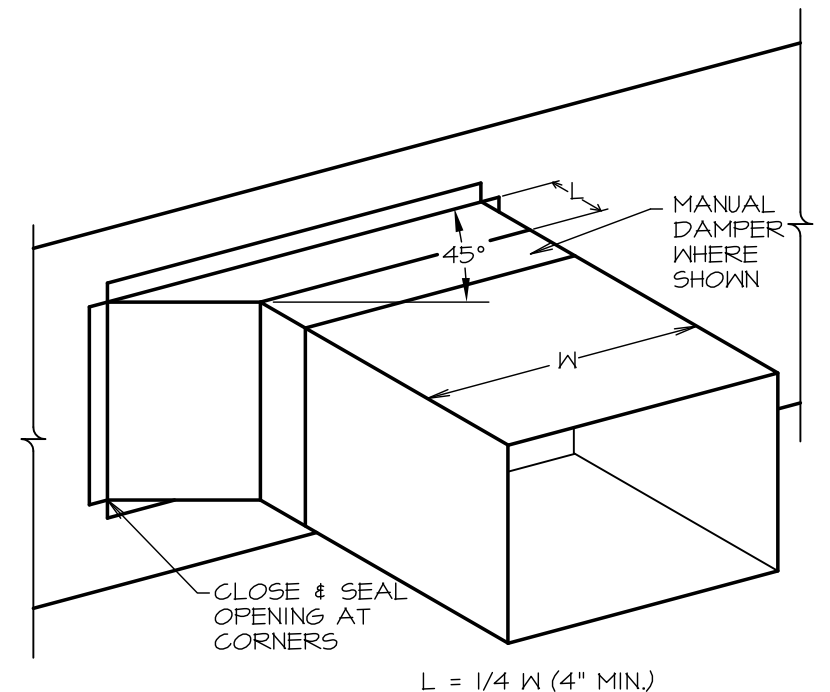
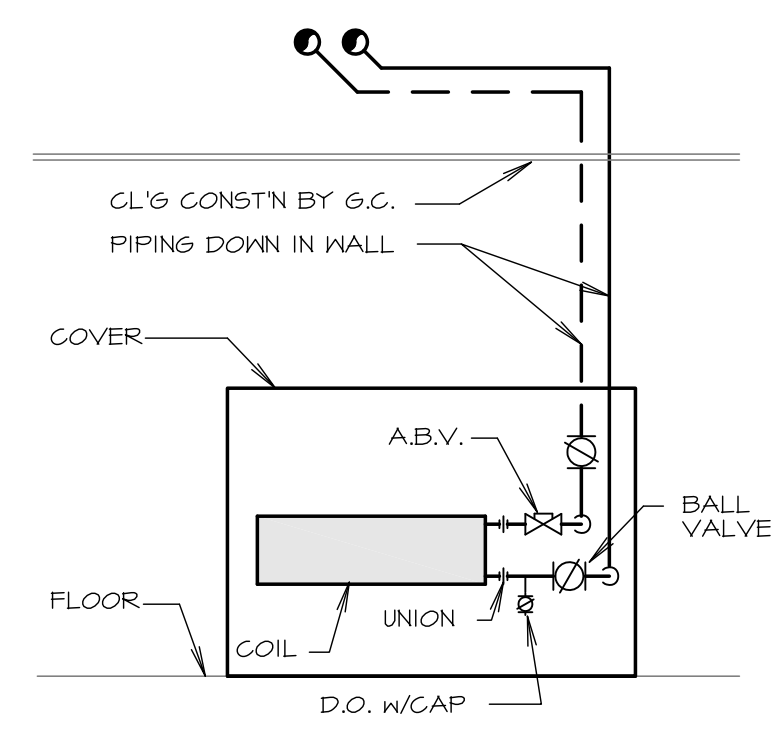


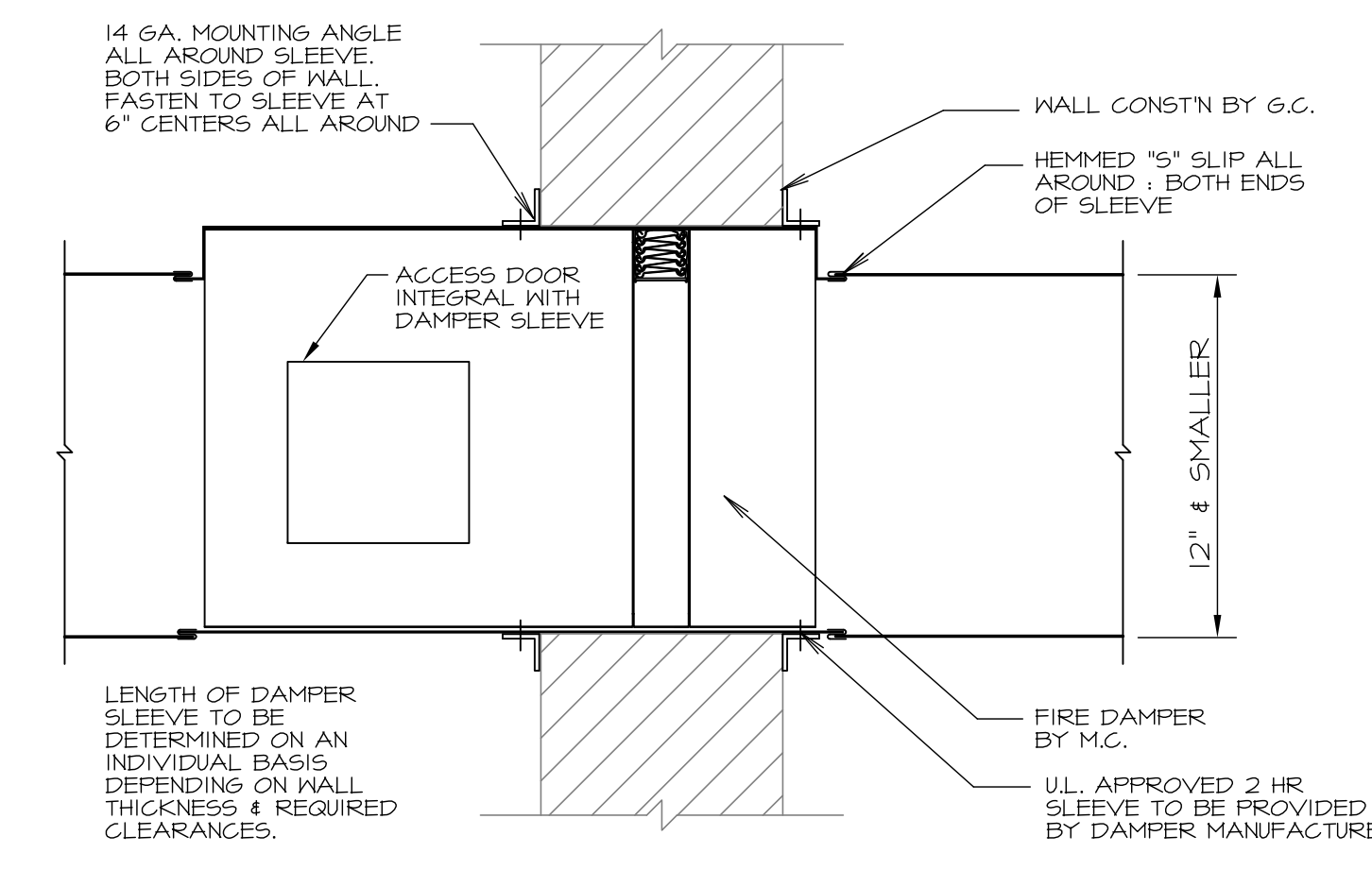
**1 FLEXIBLE DUCT & DIFFUSER CONNECTION DETAIL**  
NO SCALE



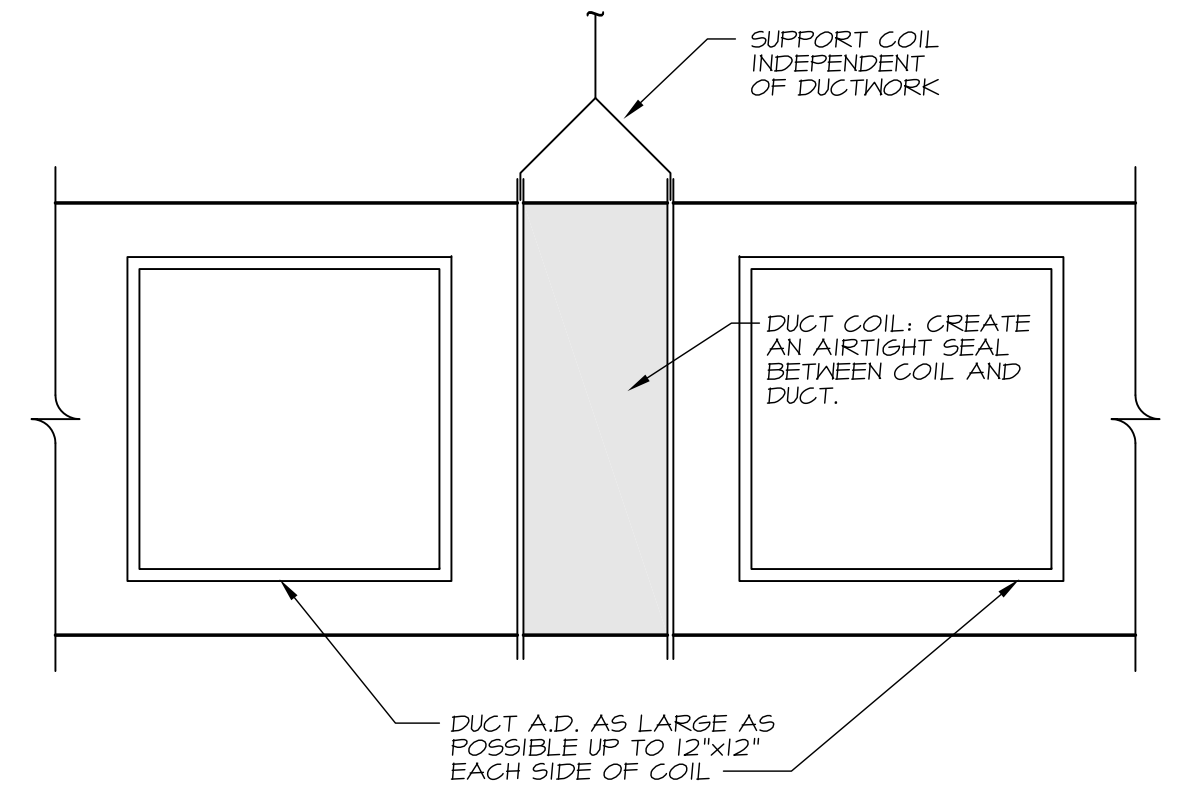
**2 BRANCH DUCT CONNECTION**  
NO SCALE



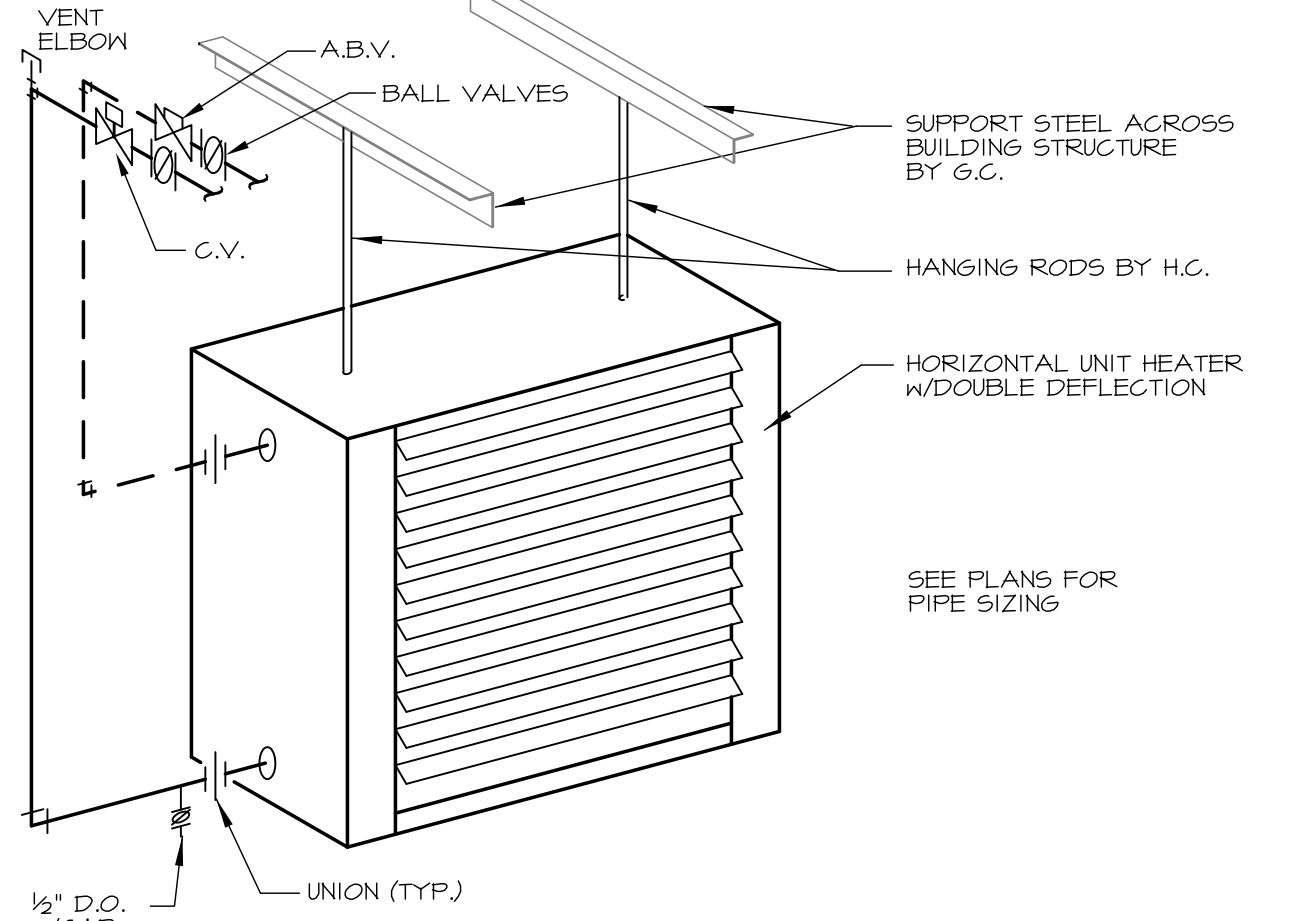
**3 DOWNFEED CABINET UNIT HEATER**  
NO SCALE



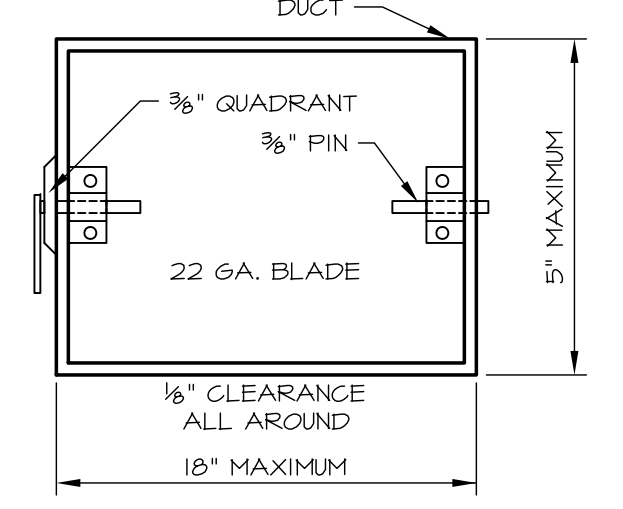
**4 WALL FIRE DAMPER STYLE 'B'**  
NO SCALE



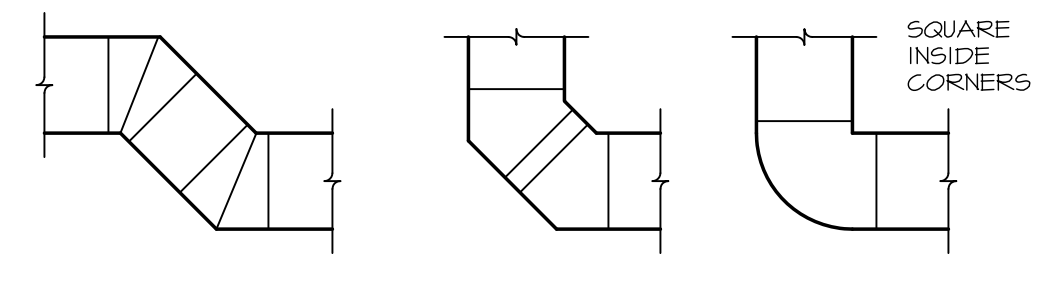
**5 DUCT REHEAT COIL**  
NO SCALE



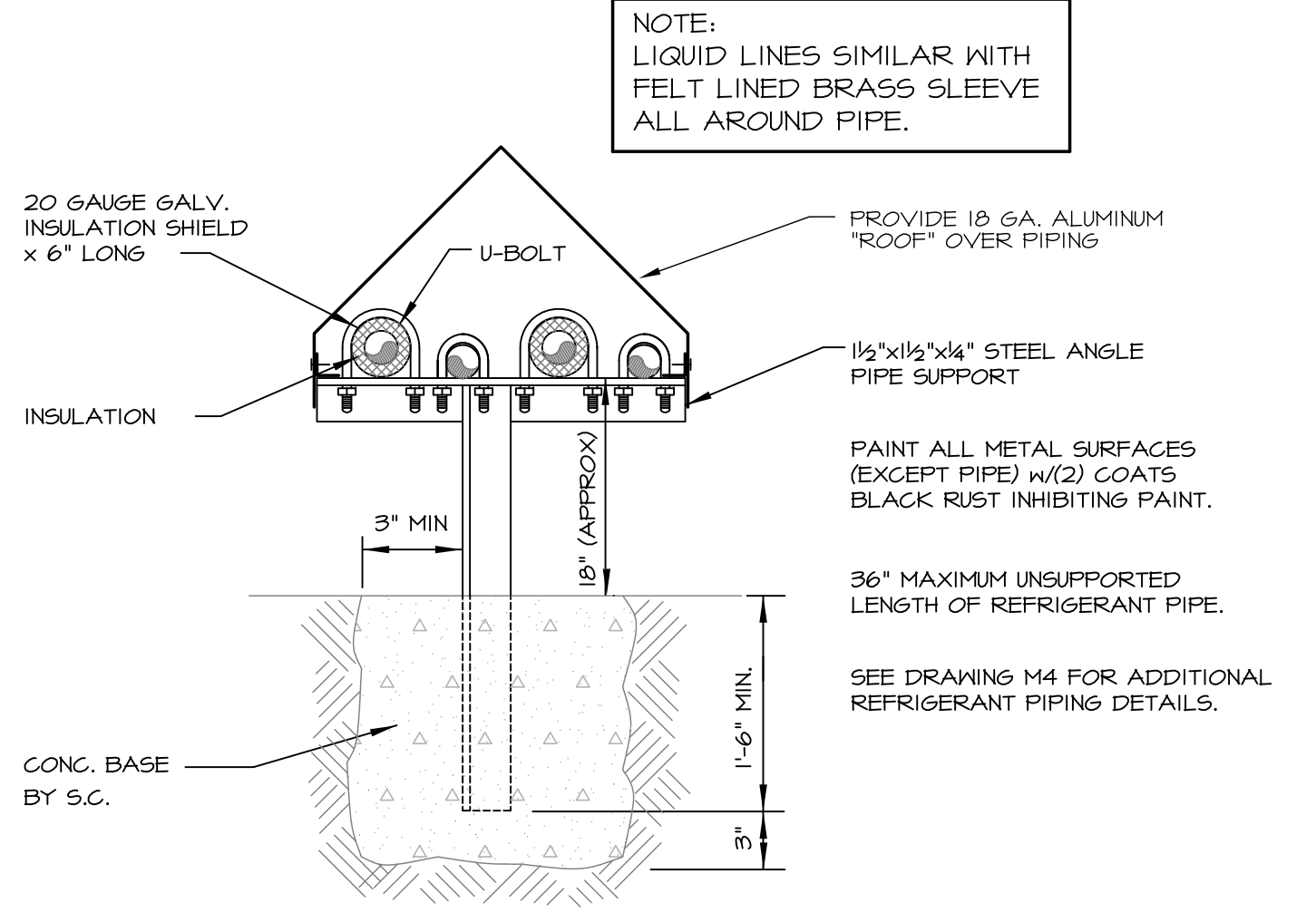
**6 DOWNFEED HORIZONTAL UNIT HEATER**  
NO SCALE



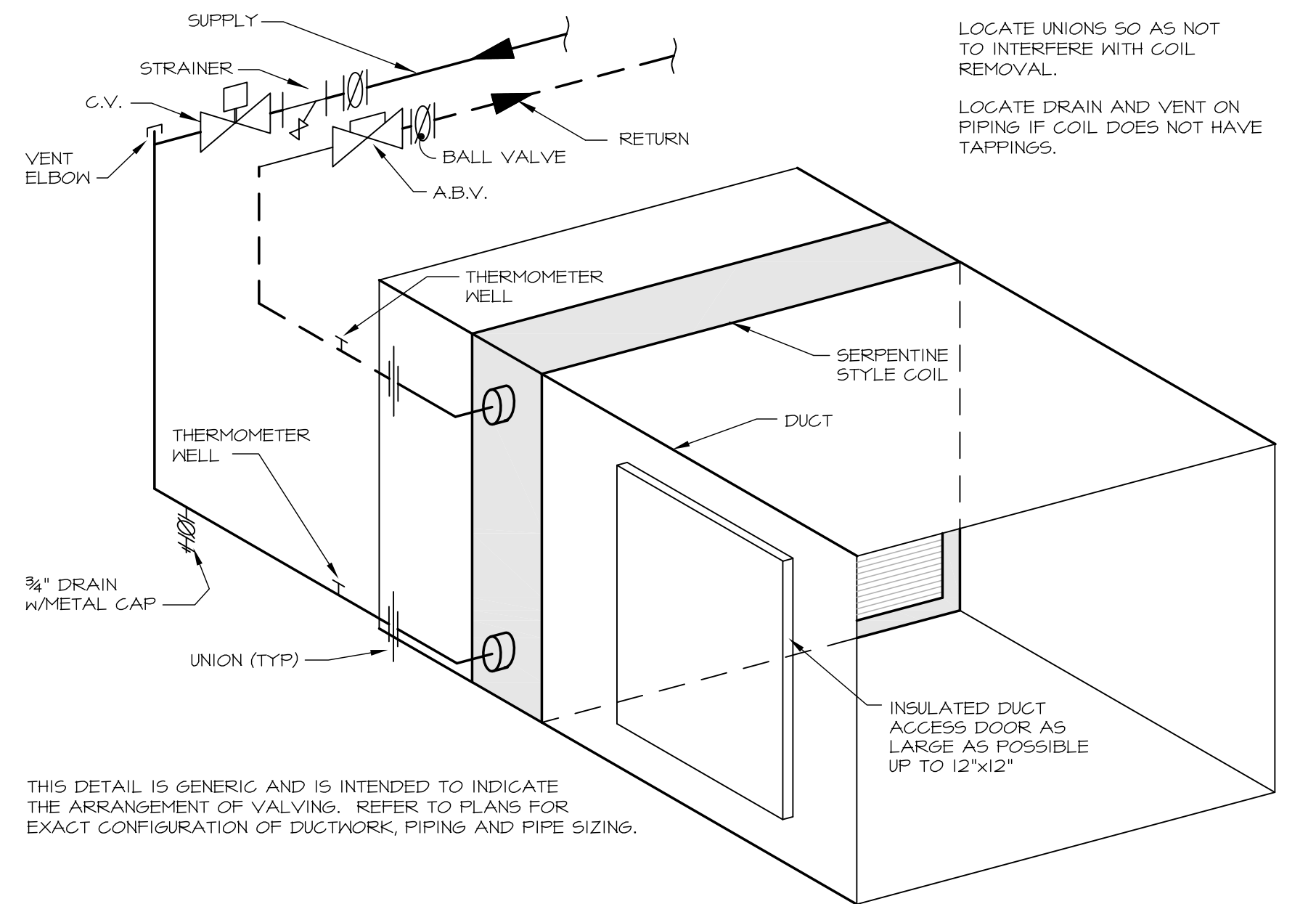
**7 SHOP FABRICATED MANUAL DAMPER**  
NO SCALE



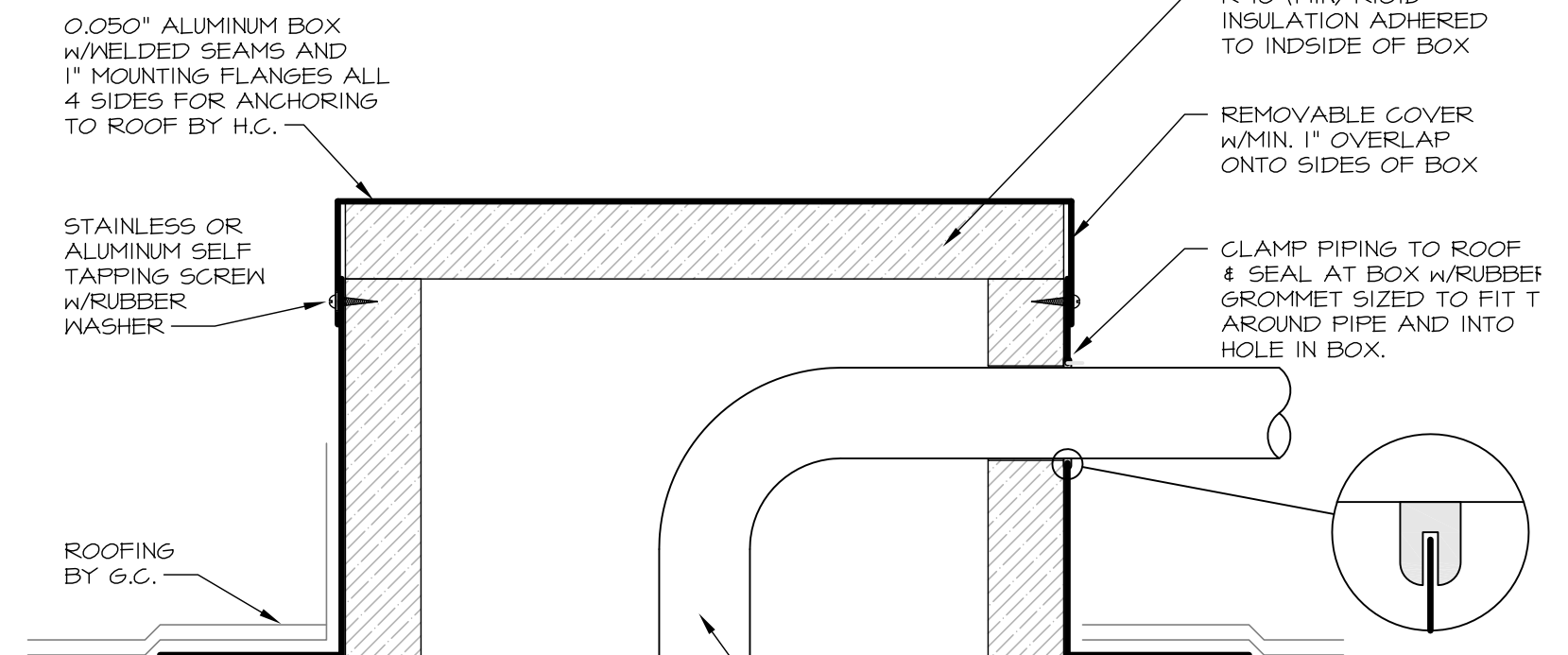
**8 UNACCEPTABLE DUCT FITTINGS**  
NO SCALE



**9 EXTERIOR REFRIGERANT PIPE SUPPORT**  
NO SCALE



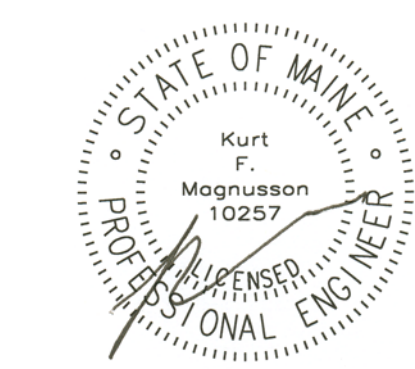
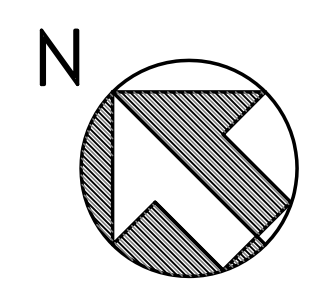
**10 DUCT HOT WATER COIL DETAIL**  
NO SCALE



**11 REFRIGERANT PIPE THRU ROOF**  
NO SCALE

SYMBOLS AND ABBREVIATIONS					
ABV	AUTOMATIC BALANCING VALVE	LBH	LEAVING WET BULB	---	WATER SUPPLY PIPING
AC	AIR CONDITIONING	MBH	THOUSAND BTU PER HOUR	- - - - -	WATER RETURN PIPING
AD	ACCESS DOOR	MBV	MANUAL BALANCING VALVE	---	COLD WATER PIPING
AFF	ABOVE FINISH FLOOR	MD	MANUAL DAMPER	- L -	REFRIGERANT LIQUID PIPING
AHJ	AIR HANDLING UNIT	MOD	MOTOR OPERATED DAMPER	- S -	REFRIGERANT SUCTION PIPING
AP	ACCESS PANEL	MV	MANUAL VENT	- X -	PIPE ANCHOR
APD	AIR PRESSURE DROP	NG	NATURAL GAS	- U -	UNION
ATC	AUTOMATIC TEMP. CONTROL	NTS	NOT TO SCALE	- F -	FLANGE
AV	AUTOMATIC VENT	OA	OUTDOOR AIR	- G -	GATE VALVE
B	BOILER	OD	OUTSIDE DIMENSION	- R -	GLOBE VALVE
BD	BACKDRAFT DAMPER	OU	OUTDOOR UNIT	- C -	CHECK VALVE
CD	CONDENSATE DRAIN	F	FAN	- B -	BALANCING VALVE
CFM	CUBIC FEET PER MINUTE	FC	FLUING CONTRACTOR	- 2 -	CONTROL VALVE (TWO WAY)
CUH	CABINET UNIT HEATER	FD	RUMP DISCHARGE	- 3 -	CONTROL VALVE (THREE WAY)
CV	CONTROL VALVE	FG	PRESSURE GAUGE	- 4 -	PRESSURE REDUCING VALVE
D	DRAIN	FRV	PRESSURE REDUCING VALVE	- 5 -	BALL VALVE
DC	DUST COLLECTOR	R	RETURN	- 6 -	STRAINER
DIC	DOWN IN CORNER/CHASE	RA	RETURN AIR	- 7 -	INVERTED ECCENTRIC REDUCER
DIFF	DIFFUSER	RF	RETURN FAN	- 8 -	THERMOSTAT
D/W	DOWN IN WALL	RG	RETURN GRILLE	- 9 -	DOOR LOUVER
DO	DRAIN-OFF	RHC	REHEAT COIL	- 10 -	MANUAL DAMPER
DSD	DUCT SMOKE DETECTOR	RIC	RETURN IN COVER	- 11 -	FLEXIBLE DUCT
EAT	ENTERING AIR TEMPERATURE	RIS	RUBBER-IN-SHEAR	- 12 -	LAY-IN DIFFUSER
EC	ELECTRICAL CONTRACTOR	RL	REFRIGERANT LIQUID	- 13 -	SURFACE MOUNT DIFFUSER
EDB	ENTERING DRY BULB	RS	REFRIGERANT SUCTION	- 14 -	SUPPLY AIR DUCT
EF	EXHAUST FAN	RR	RETURN REGISTER	- 15 -	RETURN / RELIEF AIR DUCT
EG	EXHAUST GRILLE	RV	RELIEF VALVE	- 16 -	
ER	EXHAUST REGISTER	S	SUPPLY	- 17 -	
ESP	EXTERNAL STATIC PRESSURE	SA	SUPPLY AIR	- 18 -	
ENB	ENTERING WET BULB	SC	SITE CONTRACTOR	- 19 -	
EHT	ENTERING WATER TEMPERATURE	SF	SUPPLY FAN	- 20 -	
FC	FLEXIBLE CONNECTOR	SG	SUPPLY GRILLE	- 21 -	
FD	FIRE DAMPER	SP	STATIC PRESSURE	- 22 -	
FS	FLOW SENSOR	SR	SUPPLY REGISTER	- 23 -	
FV	FACE VELOCITY	SV	SAFETY VALVE	- 24 -	
GC	GENERAL CONTRACTOR	T	THERMOMETER	- 25 -	
GPH	GALLONS PER HOUR	TC	TEMPERATURE CONTROL	- 26 -	
GPM	GALLONS PER MINUTE	TCP	TEMPERATURE CONTROL PANEL	- 27 -	
GV	GATE VALVE	TG	TRANSFER GRILLE	- 28 -	
H	HUMIDIFIER	TSP	TOTAL STATIC PRESSURE	- 29 -	
HC	HEATING CONTRACTOR	TSTAT	THERMOSTAT	- 30 -	
HRU	HEAT RECOVERY UNIT	TV	TURNING VANE	- 31 -	
H/R	HOT WATER RETURN	UC	UNDERCUT	- 32 -	
H/S	HOT WATER SUPPLY	UH	UNIT HEATER	- 33 -	
HVAC	HEATING, VENTILATING AND AIR CONDITIONING	V	VENT	- 34 -	
IER	INVERTED ECCENTRIC REDUCER	VI	VIBRATION ISOLATOR	- 35 -	
L	LOUVER	WPD	WATER PRESSURE DROP	- 36 -	
LAT	LEAVING AIR TEMPERATURE	WTD	WATER TEMPERATURE DROP	- 37 -	
LDB	LEAVING DRY BULB	WTR	WATER TEMPERATURE RISE	- 38 -	

September 25, 2015 8:25 AM \\Viergeist\Projects\1020\_Cumberland Cold Storage\Drawings\1020\_M15-M16.dwg



**Blais Civil Engineers, PA**  
780 Broadway  
South Portland, Maine 04106  
T. 207.767.7300  
sblaise@blaiseco.com

**Bartlett Design**  
942 Washington Street  
Bath, Maine 04530  
T. 207.443.5447 F. 207.443.5560  
bartdes@blazenetme.net

**Mechanical Systems Engineers**  
Royal River Center, Unit #10  
10 Forest Falls Drive, Yarmouth, Maine 04096  
T. 207.846.1441 F. 207.846.1443

**Carroll Associates Landscape Architects**  
217 Commercial Street, Suite 200  
Portland, Maine 04101  
T. 207.772.1552 F. 207.772.0172

**Becker Structural Engineers, Inc.**  
75 York Street, Portland, Maine 04101  
T. 207.879.1838 F. 207.879.1822  
www.beckerstructural.com

**Winton Scott Architects, PA**  
5 Milk Street, Portland, Maine 04101  
207.774.4811 www.wintonscott.com

REV #	DATE	DESCRIPTION

Renovations To:  
**CUMBERLAND COLD STORAGE BUILDING**  
Merrill's Wharf, Portland, Maine



MECHANICAL SYSTEMS ENGINEERS  
ROYAL RIVER CENTER, UNIT #10  
10 FOREST FALLS DRIVE  
YARMOUTH, MAINE 04096  
VOICE: (207) 846-1441  
FAX: (207) 846-1443  
© September 2015  
M.S.E. Proj. 1020

PERMIT SET  
NOT FOR  
CONSTRUCTION

GENERAL MECHANICAL DETAILS  
**M15**