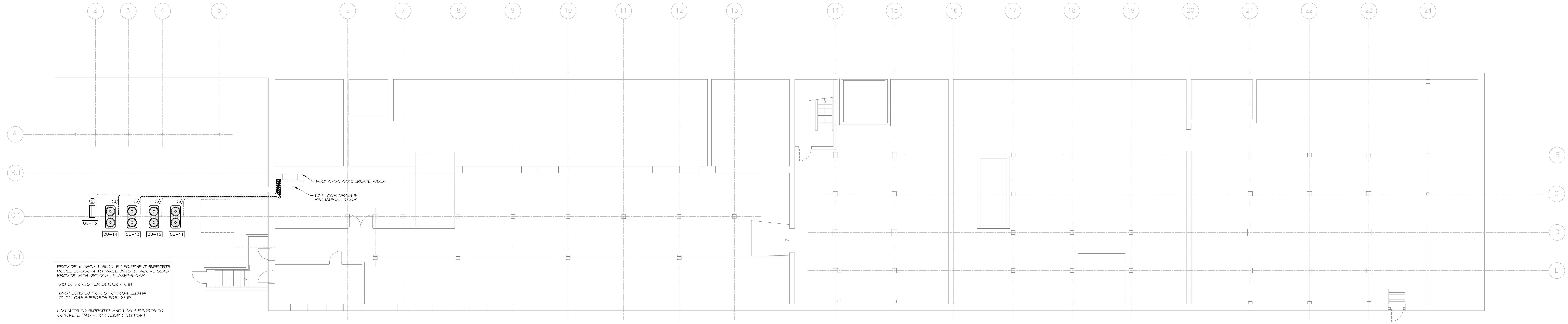


September 23, 2010 10:28 am  
\\server1\Projects\1020 Cumberland Cold Storage\Drawings\1020\_M6-M12.dwg

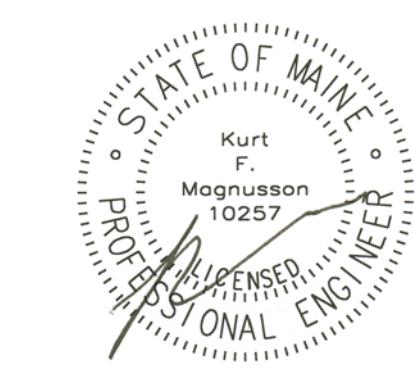
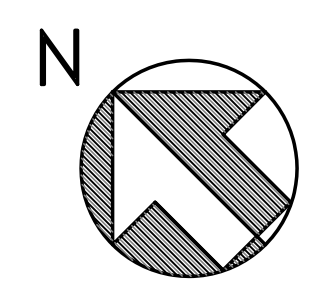


PROVIDE 4 INSTALL BUCKLEY EQUIPMENT SUPPORTS MODEL ES-300-4 TO RAISE UNITS 16" ABOVE SLAB PROVIDE WITH OPTIONAL FLASHING CAP  
TWO SUPPORTS PER OUTDOOR UNIT  
6'-0" LONG SUPPORTS FOR OU-HU213414  
2'-0" LONG SUPPORTS FOR OU-15  
LAG UNITS TO SUPPORTS AND LAG SUPPORTS TO CONCRETE PAD - FOR SEISMIC SUPPORT

REFRIGERANT PIPING	
① 1/4" LIQUID 1/2" GAS	ACR BENDABLE TUBING, INSULATED
② 3/8" LIQUID 3/8" GAS	ACR BENDABLE TUBING, INSULATED
③ 3/8" LIQUID 1-1/8" GAS	TYPE 'K' COPPER PIPE, INSULATED
④ 1/2" LIQUID 1-1/8" GAS	TYPE 'K' COPPER PIPE, INSULATED

PERMIT SET  
NOT FOR  
CONSTRUCTION

**MECHANICAL SYSTEMS ENGINEERS**  
ROYAL RIVER CENTER, UNIT #10  
10 FOREST FALLS DRIVE  
YARMOUTH, MAINE 04096  
VOICE: (207) 846-1441  
FAX: (207) 846-1443  
©COPYRIGHT 2010  
M.S.E. Proj. 1020



**Blais Civil Engineers, PA**  
780 Broadway  
South Portland, Maine 04106  
T. 207.767.7300  
sblaise@blaisece.com

**Bartlett Design**  
942 Washington Street  
Bath, Maine 04530  
T. 207.443.5447 F. 207.443.5560  
bartdes@blazenetme.net

**Mechanical Systems Engineers**  
Royal River Center, Unit #10  
10 Forest Falls Drive, Yarmouth, Maine 04096  
T. 207.846.1441 F. 207.846.1443

**Carroll Associates Landscape Architects**  
217 Commercial Street, Suite 200  
Portland, Maine 04101  
T. 207.772.1552 F. 207.772.0712

**Becker Structural Engineers, Inc.**  
75 York Street, Portland, Maine 04101  
T. 207.879.1838 F. 207.879.1822  
www.beckerstructural.com

**Winton Scott Architects, PA**  
5 Milk Street, Portland, Maine 04101  
207.774.4811 www.wintonscott.com

REV #	DATE	DESCRIPTION

Renovations To:  
**CUMBERLAND COLD STORAGE BUILDING**  
Merrill's Wharf, Portland, Maine

**BASEMENT MECHANICAL PIPING PLAN**

**M6**

9.23.2010