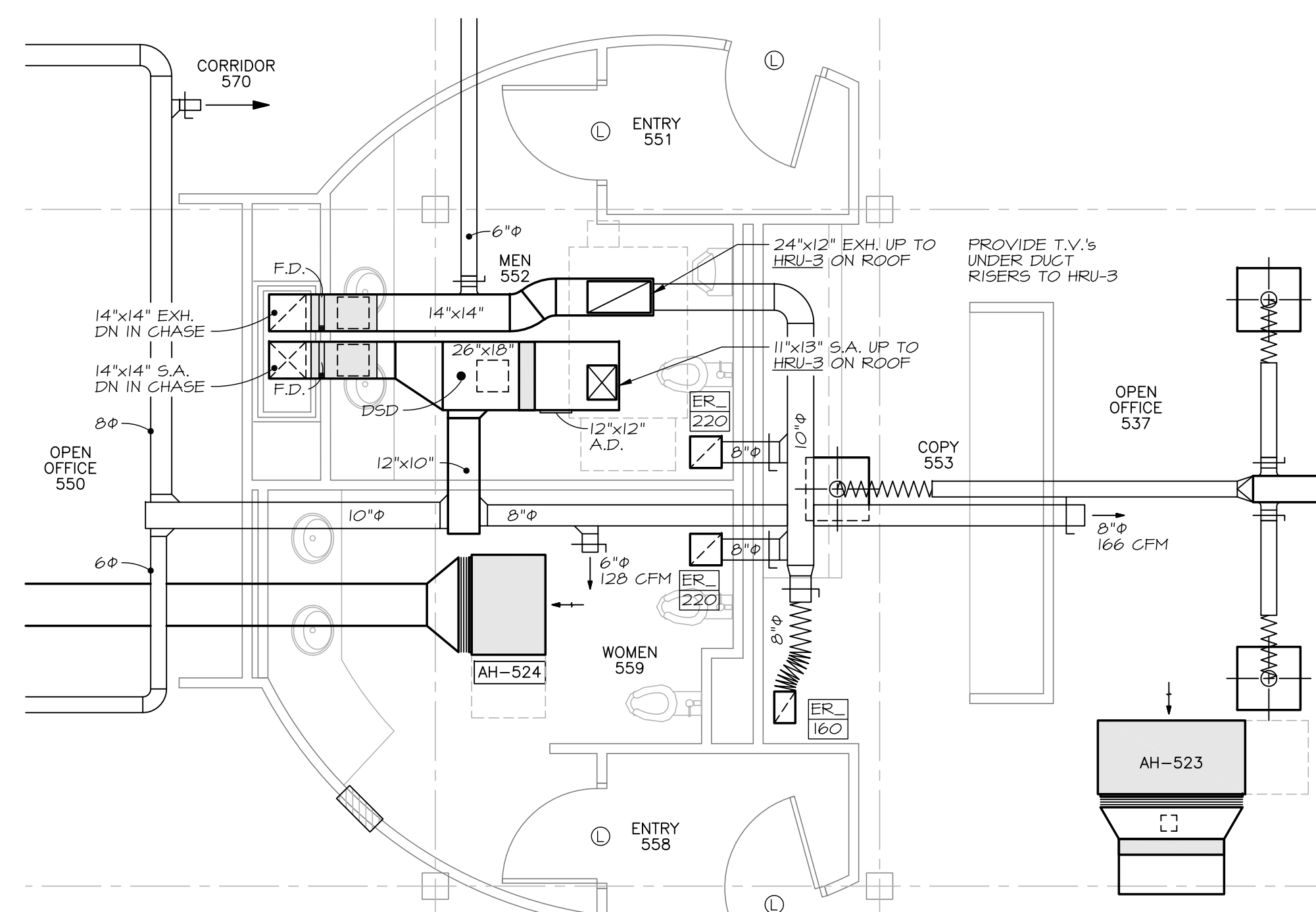


1 5th FLOOR DUCTWORK PLAN
SCALE: 1/8" = 1'-0"

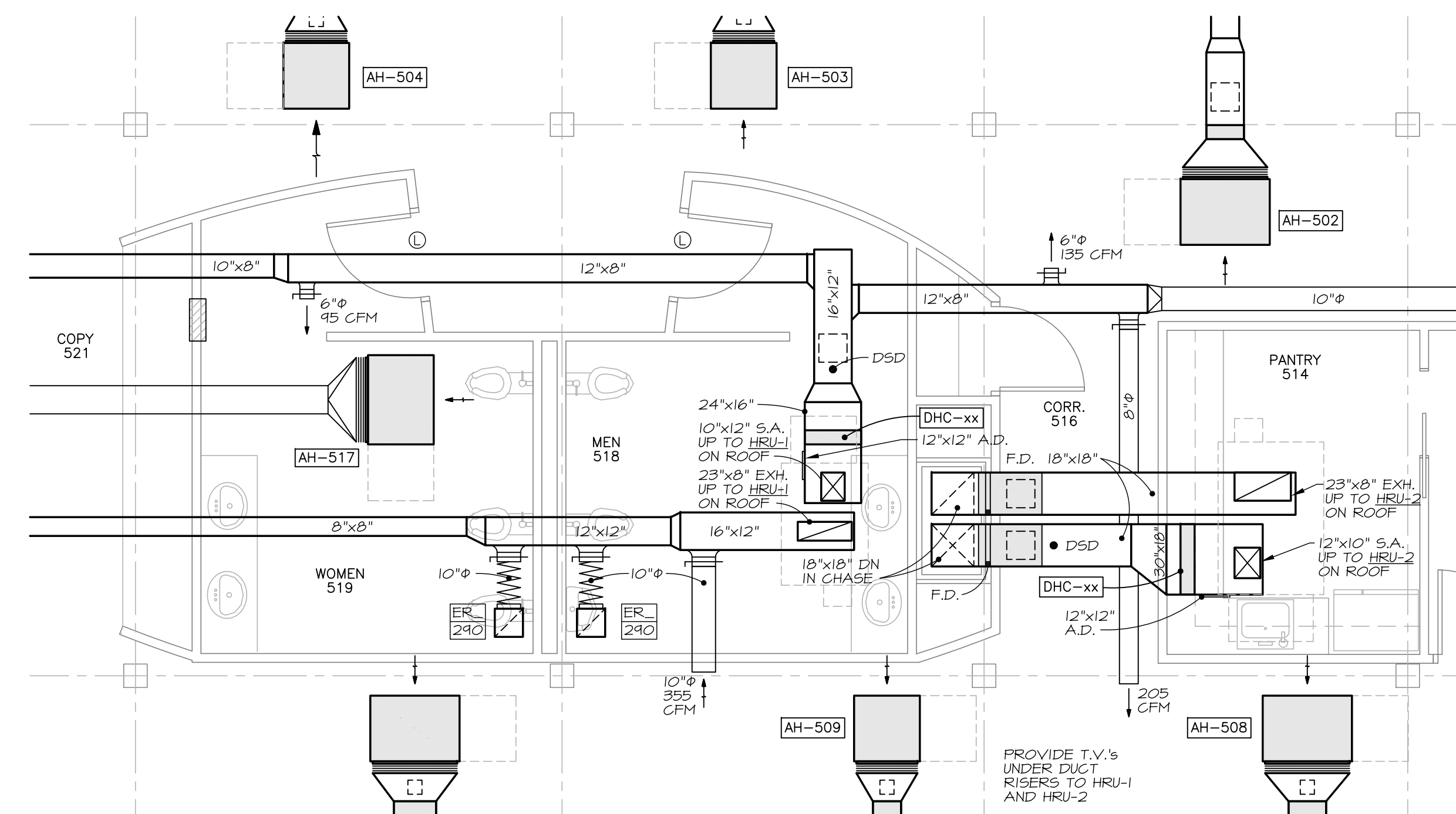
MOUNT THERMOSTATS
BESIDE ROOM LIGHT
SWITCHES.

LOCATE DUCTWORK AROUND
THE OUTSIDE OF TOILET AREAS
TO AVOID RECESSED LIGHTING
IN GYPSUM CEILINGS

REFER TO REFLECTED CEILING
PLAN A-4.5 FOR EXACT
PLACEMENT OF CEILING
REGISTERS & DIFFUSERS



2 ENLARGED PLAN - NORTH TOILETS
SCALE: 1/4" = 1'-0"



3 ENLARGED PLAN - SOUTH TOILETS
SCALE: 1/4" = 1'-0"



PERMIT SET
NOT FOR
CONSTRUCTION

MECHANICAL SYSTEMS ENGINEERS
ROYAL RIVER CENTER, UNIT #10
10 FOREST FALLS DRIVE
YARMOUTH, MAINE 04096
VOICE: (207) 846-1441
FAX: (207) 846-1443
© copyright 2018
M.S.E. Proj. 1020

Blais Civil
Engineers, PA
780 Broadway
South Portland, Maine 04106
T. 207.767.7300
sblaise@blaisce.com

Bartlett Design
942 Washington Street
Bath, Maine 04530
T. 207.443.5447 F. 207.443.5560
bartdes@blazenetme.net

Mechanical Systems
Engineers
Royal River Center, Unit #10
10 Forest Falls Drive, Yarmouth, Maine 04096
T. 207.846.1441 F. 207.846.1443

Carroll Associates
Landscape Architects
217 Commercial Street, Suite 200
Portland, Maine 04101
T. 207.772.1552 F. 207.772.0172

Becker Structural
Engineers, Inc.
75 York Street, Portland, Maine 04101
T. 207.879.1838 F. 207.879.1822
www.beckerstructural.com

Winton Scott
Architects, PA
5 Milk Street, Portland, Maine 04101
207.774.4811 www.wintonscott.com

REV #	DATE	DESCRIPTION

Renovations To:
CUMBERLAND COLD STORAGE BUILDING
Merrill's Wharf, Portland, Maine

5th FLOOR
MECHANICAL
DUCTWORK

M5

9.23.2010