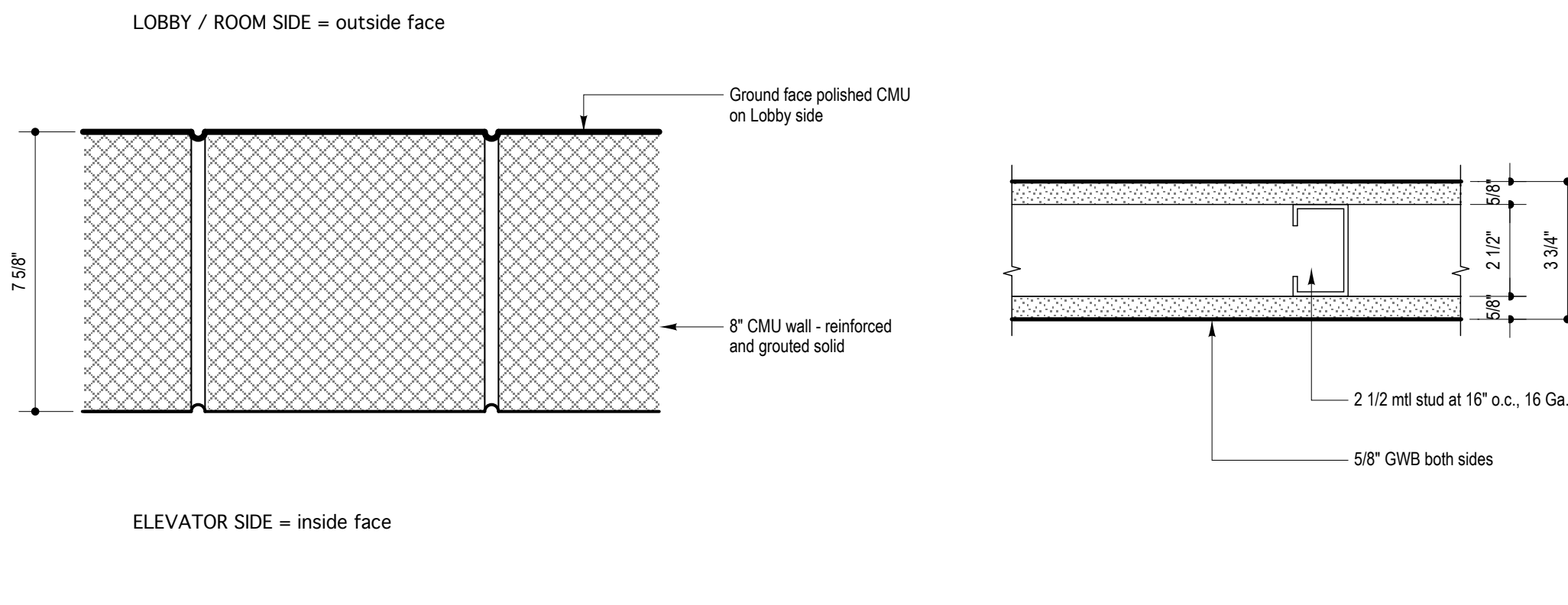
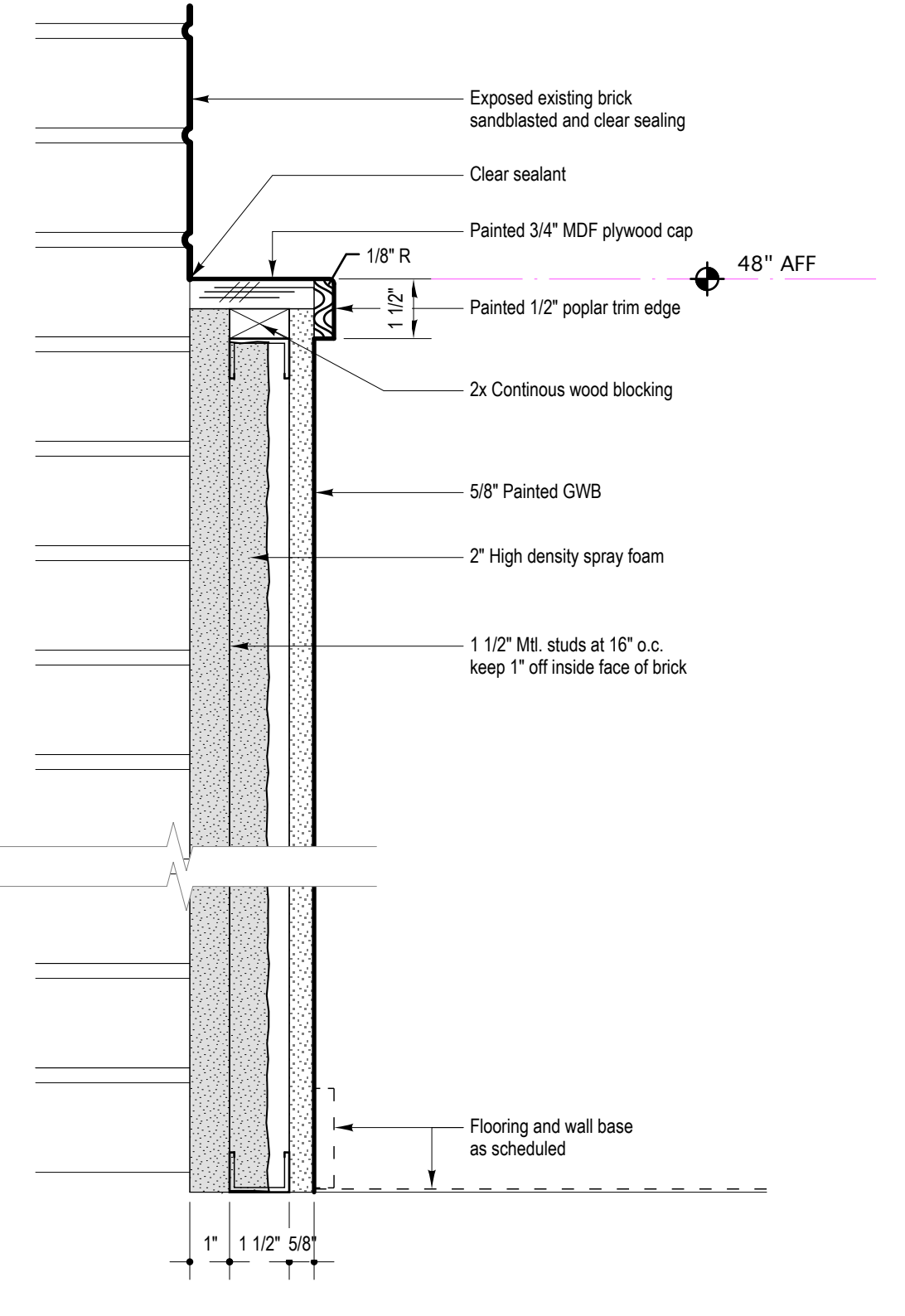


- 1 2-hour fire rated - UL 263 as shown
- 1A 2-hour fire rated - UL 263 omit furring and GWB on inside face
- 1B 2-hour fire rated - UL 263 use 12" CMU, use 2 1/2" mtl stud in lieu of 7/8" furring on outside face
- 1C 2-hour fire rated - UL 263 use 12" CMU
- 1D 2-hour fire rated - UL 263 use 12" CMU, omit furring and GWB on outside face
- 1E 2-hour fire rated - UL 263 omit furring and GWB on outside face
- 1F 2-hour fire rated - UL 263 use 2 1/2" mtl stud in lieu of 7/8" furring on outside face

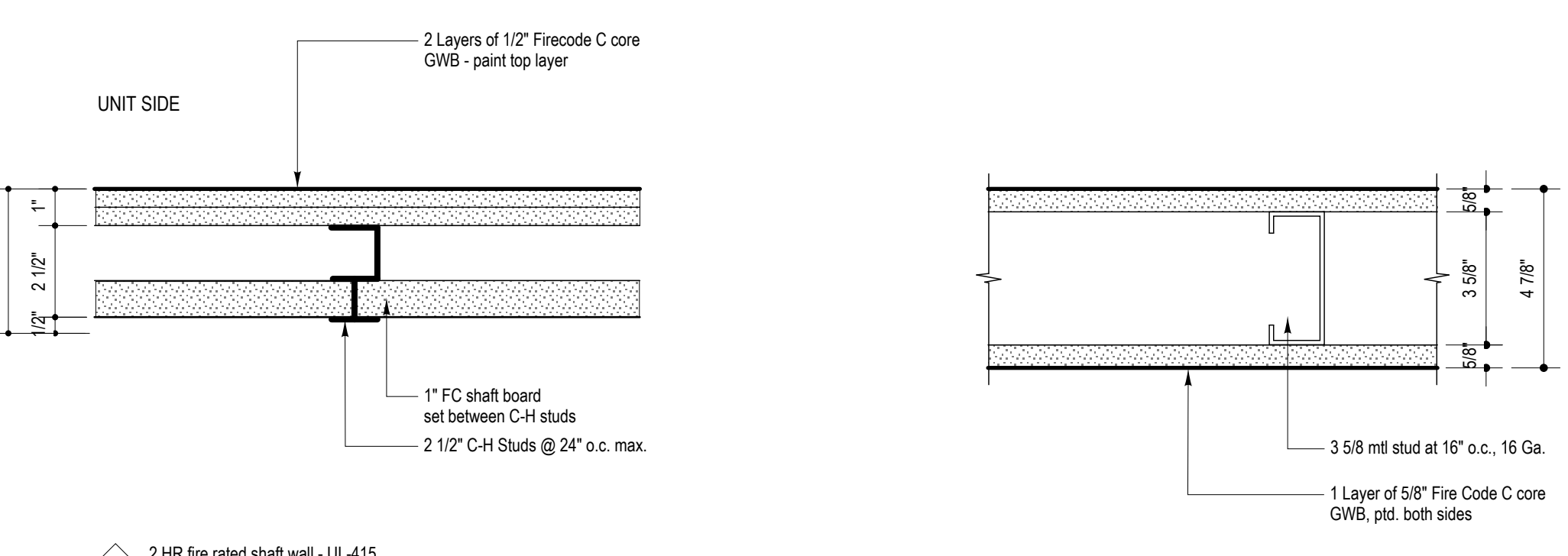


- 2 2-hour fire rated - UL 263 as shown
- 2A 2-hour fire rated - UL 263 Standard face finish CMU
- 2B 2-hour fire rated - UL 263 Standard face finish CMU, use 7/8" mtl hat channel furring and 5/8" Fire Code C core GWB, ptd. on outside face
- 2C 2-hour fire rated - UL 263 Standard face finish CMU, use 2 1/2" mtl stud and 5/8" Fire Code C core GWB, ptd. on outside face
- 2D 2-hour fire rated - UL 263 use 12" standard face finish CMU
- 2E non-rated wall Standard face finish CMU

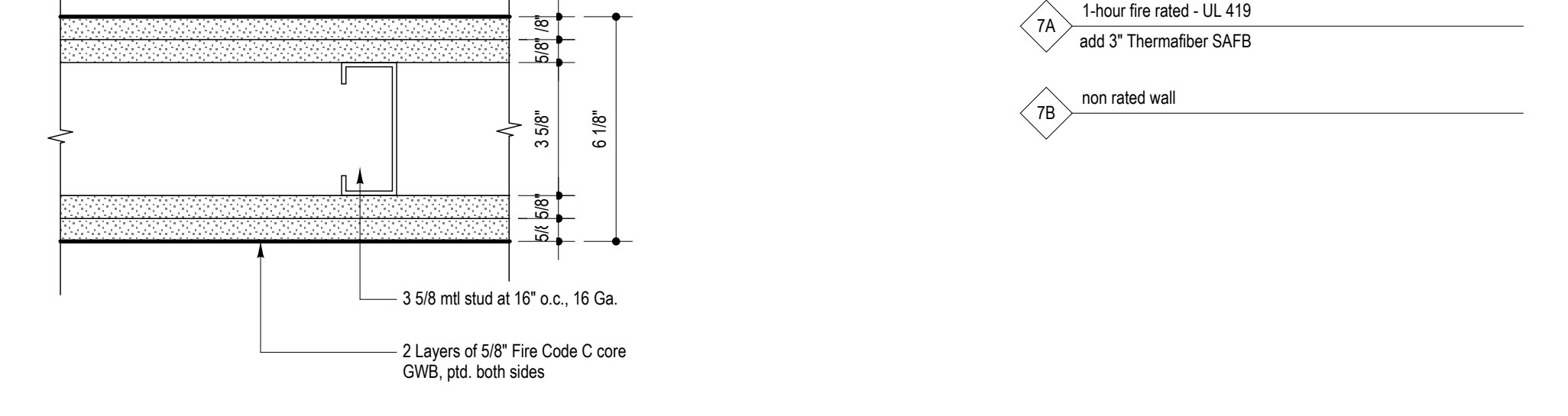
- 3 Non-rated partition as shown
- 3A Non-rated partition add 2 1/2" acoustical batt insulation
- 3B Non-rated partition omit drywall on chase side (or room side where indicated on plan)
- 3C 1HR rated partition - UL 419 use 5/8" Fire Code C core GWB both sides



- 5 Exterior Wall Finish as shown
- 5A Exterior Wall Finish full height, floor to underside of deck, omit wood cap use 2 1/2" mtl stud, keep 1/2" off face of brick



- 4 2 HR fire rated shaft wall - UL-415 as shown



- 6 2-hour fire rated - UL xxx As shown
- 6A 2-hour fire rated - UL xxx add 3" Thermafiber SAFB

NOTE: SEE FINISH SCHEDULE FOR ADDITIONAL WALL FINISHES ATTACHED TO DRYWALL ON ALL 7-SERIES PARTITIONS

- 7 1-hour fire rated - UL 419 As shown
- 7A 1-hour fire rated - UL 419 add 3" Thermafiber SAFB
- 7B non-rated wall

**FINISH SCHEDULE**

**BASEMENT FLOOR**

Room #	Room Name	Floor	Base	Walls	Ceiling	Remarks
001	ELECTRICAL ROOM	SEALED CONCRETE	N/A	EXIST/NEW CMU	PTD GWB - 1HR FIRE RATED	
002	CORRIDOR	SEALED CONCRETE	N/A	EXIST/NEW CMU	EXPOSED STRUCT	
003	BOILER ROOM	SEALED CONCRETE	N/A	EXIST/NEW CMU	PTD GWB	
004	BASEMENT	EXISTING	N/A	EXISTING	EXPOSED STRUCT	
005	BASEMENT	EXISTING	N/A	EXISTING	EXPOSED STRUCT	
006	BASEMENT	EXISTING	N/A	EXISTING	EXPOSED STRUCT	
007	STAIR 3	EXISTING	N/A	EXISTING	EXPOSED STRUCT	
008	CRAWL SPACE	EXISTING	N/A	EXISTING	EXPOSED STRUCT	
009	CRAWL SPACE	EXISTING	N/A	EXISTING	EXPOSED STRUCT	

**FIRST FLOOR**

Room #	Room Name	Floor	Base	Walls	Ceiling	Remarks
100	TENANT SPACE	EXISTING	N/A	PTD GWB / BRICK	EXPOSED STRUCT	
101	CORRIDOR	RUBBER	4" RUBBER	PTD GWB	PTD GWB	
102	STAIR 1	CRPT 1	PTD STRINGER	PTD GWB	PTD GWB / PTD STRUCTURE	
103	TENANT SPACE	EXISTING	N/A	PTD GWB / BRICK	EXPOSED STRUCT	
104	TENANT SPACE	EXISTING	N/A	PTD GWB / BRICK	EXPOSED STRUCT	
105	TENANT SPACE	EXISTING	N/A	PTD GWB / BRICK	EXPOSED STRUCT	
106	RECYCLING STORAGE	PTD EXISTING	4" RUBBER	PTD GWB	ACT	
107	ELEVATOR MACHINE ROOM	PTD EXISTING	4" RUBBER	PTD GWB	PTD GWB - 2HR FIRE RATED	
108	FREIGHT ELEVATOR LOBBY	PTD EXISTING	4" RUBBER	PTD GWB / BRICK	EXPOSED STRUCT	
109	STAIR 3	RUBBER	4" RUBBER	PTD GWB / BRICK	EXPOSED STRUCT	
110	ELECTRICAL ROOM	VCT	4" RUBBER	PTD GWB / CMU	ACT	
111	TENANT SPACE	EXISTING	N/A	PTD GWB / BRICK	EXPOSED STRUCT	
112	VESTIBULE	CERMC TILE 1 / ENTRY MAT	CERMC TILE 1	CLR FINISH WD PNL.S	PTD GWB	
113	LOBBY	CERMC TILE 1	CERMC TILE 1	CLR FINISH WD PNL.S	GLASS PNL.S / EXPOSED STRUCT	
114	JANITOR CLOSET	VCT	4" RUBBER	PTD GWB	ACT	
115	MAIL ROOM	VCT	4" RUBBER	PTD GWB	ACT	
116	CORRIDOR	CERMC TILE 1	CERMC TILE 1	CLR FINISH WD PNL.S	EXPOSED STRUCT	
117	TENANT SPACE	EXISTING	N/A	PTD GWB / BRICK	EXPOSED STRUCT	
118	TENANT SPACE	EXISTING	N/A	PTD GWB / BRICK	EXPOSED STRUCT	
119	TENANT SPACE	EXISTING	N/A	PTD GWB / BRICK	EXPOSED STRUCT	
120	STAIR 2	CERMC TILE 1 / CRPT 1	PTD STRINGER	PTD GWB	PTD GWB / PTD STRUCTURE	

**SECOND FLOOR**

Room #	Room Name	Floor	Base	Walls	Ceiling	Remarks
201	LOBBY	CERMC TILE 2	CERMC TILE 2	PTD GWB	EXPOSED STRUCT	
201A	ELECTRICAL ROOM	VCT	4" RUBBER	PTD GWB / PTD CMU	ACT	
247	CORRIDOR	CRPT 1	4" RUBBER	PTD GWB / PTD CMU	EXPOSED STRUCT	
247	STAIR 2	CRPT 1	PTD STRINGER	PTD GWB / PTD CMU	PTD GWB / PTD STRUCT	
255	STAIR 1	CRPT 1	PTD STRINGER	PTD GWB / PTD CMU	PTD GWB / PTD STRUCT	
256	TENANT SPACE	EXISTING	EXISTING	PTD GWB / BRICK	EXPOSED STRUCT	
257	TENANT SPACE	EXISTING	EXISTING	PTD GWB / BRICK	EXPOSED STRUCT	
258	TENANT SPACE	EXISTING	EXISTING	PTD GWB / BRICK	EXPOSED STRUCT	
259	CORRIDOR	EXISTING	4" RUBBER	PTD GWB / BRICK	EXPOSED STRUCT	

**THIRD FLOOR**

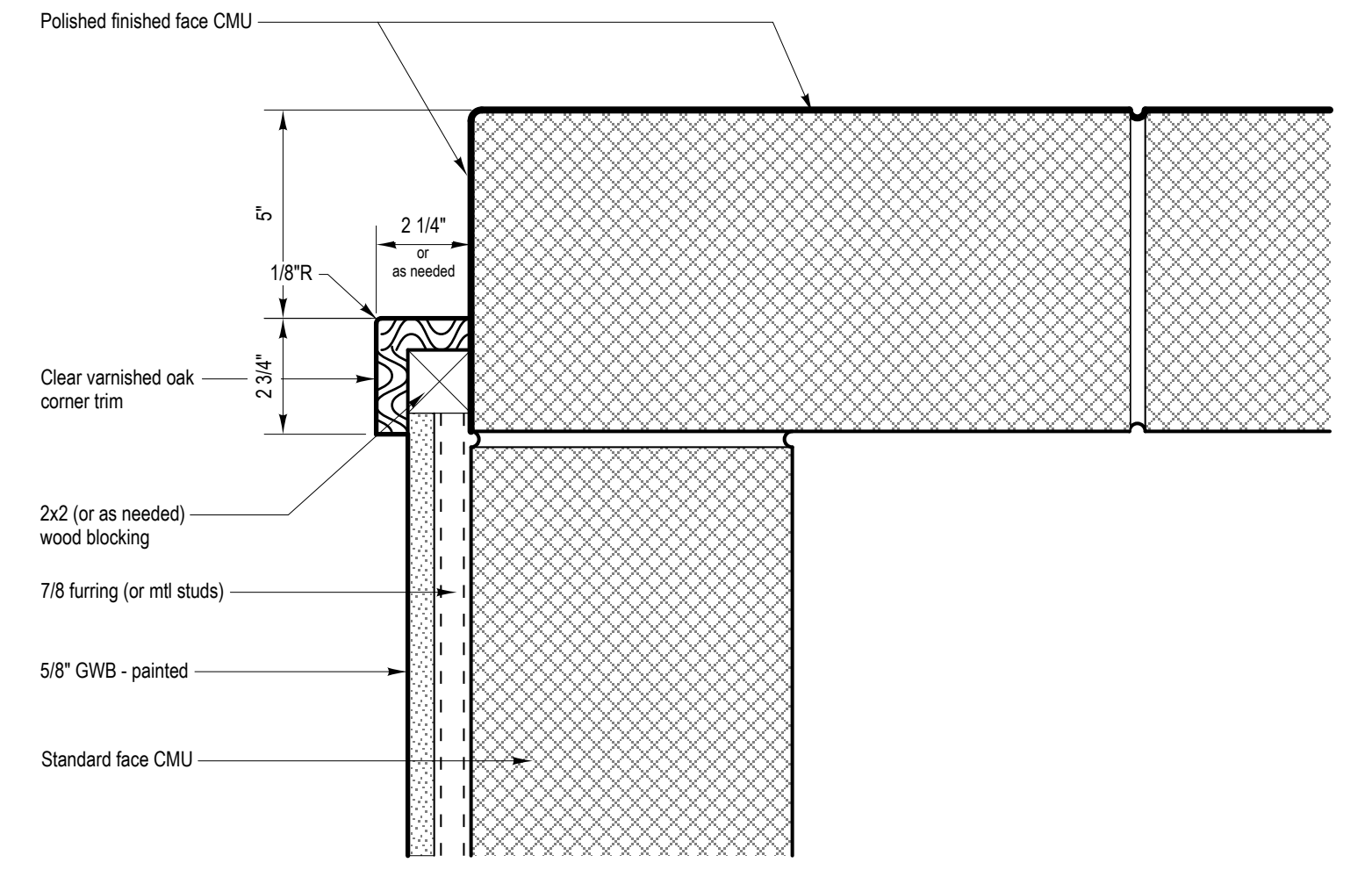
Room #	Room Name	Floor	Base	Walls	Ceiling	Remarks
301A	ELECTRICAL ROOM	VCT	4" RUBBER	PTD GWB / PTD CMU	ACT	
305	STAIR 2	CRPT 1	PTD STRINGER	PTD GWB	PTD GWB / PTD STRUCT	
355	STAIR 1	CRPT 1	PTD STRINGER	PTD GWB	PTD GWB / PTD STRUCT	

**FOURTH FLOOR**

Room #	Room Name	Floor	Base	Walls	Ceiling	Remarks
401A	ELECTRICAL ROOM	VCT	4" RUBBER	PTD GWB / CMU	ACT	
405	STAIR 2	CRPT 1	PTD STRINGER	PTD GWB	PTD GWB / PTD STRUCT	
456	STAIR 1	CRPT 1	PTD STRINGER	PTD GWB	PTD GWB / PTD STRUCT	

**FIFTH FLOOR**

Room #	Room Name	Floor	Base	Walls	Ceiling	Remarks
501A	ELECTRICAL ROOM	VCT	4" RUBBER	PTD GWB / CMU	ACT	
523	STAIR 2	CRPT 1	PTD STRINGER	PTD GWB	PTD GWB / PTD STRUCT	
456	STAIR 1	CRPT 1	PTD STRINGER	PTD GWB	PTD GWB / PTD STRUCT	



**A DETAIL AT FINISHED CMU CORNER AT ELEVATOR**  
3" = 1'-0"

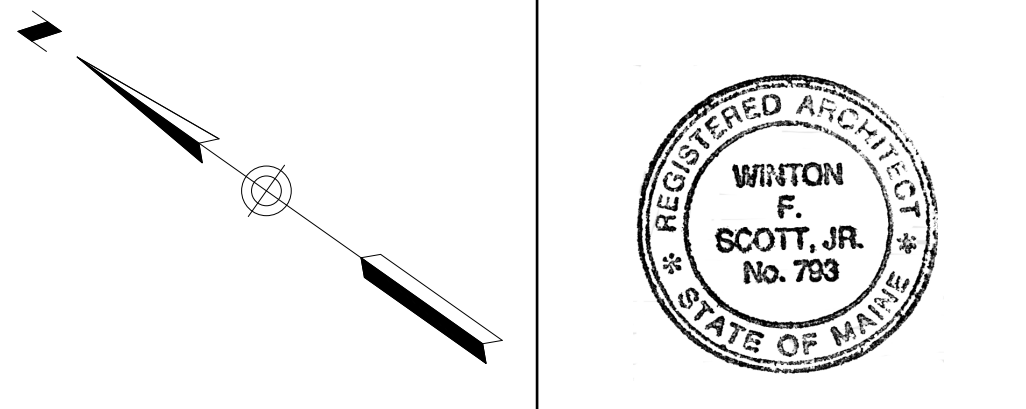
**ABBREVIATIONS**

VCT	VINYL COMPOSITION TILE
CERMC	CERAMIC
CRPT	CARPET
GWB	GYPSSUM WALL BOARD
CMU	CONCRETE MASONRY UNIT
ACT	ACOUSTICAL CEILING TILE
PTD	PAINTED
PNL.S	PANELS
STRUCT	STRUCTURE
WD	WOOD

**NOTES & LEGEND**

- 1- ALL EXPOSED STRUCTURE AND BRICK SHALL BE SANDBLASTED AND SEALED
- 2- CERMC TILE 1 - PER SPECIFICATIONS
- 3- CERMC TILE 2 - MATCH TILE SPECIFIED IN TENANT FIT-UP DRAWINGS AT ELEVATOR LOBBY AT FLOORS 3, 4, AND 5
- 4- CRPT 1 - MATCH C1 CARPET IN TENANT FIT-UP DRAWINGS

**PERMIT SET-NOT FOR CONSTRUCTION**



**Blais Civil Engineers, PA**  
780 Broadway  
South Portland, ME 04106  
T. 207.767.7300  
sblaise@blaisece.com

**Bartlett Design**  
942 Washington Street  
Bath, ME 04530  
T. 207.443.5447 F. 207.443.5560  
bartdes@blazenet.me

**Mechanical Systems Engineers**  
Royal River Center, Unit #10  
10 Forest Falls Drive, Yarmouth, ME 04096  
T. 207.846.1441 F. 207.846.1443

**Carroll Associates Landscape Architects**  
217 Commercial Street, Suite 200  
Portland, ME 04101  
T. 207.772.1552 F. 207.0712

**Becker Structural Engineers, Inc.**  
75 York Street, Portland, ME 04101  
T. 207.879.1838 F. 207.879.1822  
www.beckerstructural.com

**Winton Scott Architects, PA**  
5 Milk Street, Portland, ME 04101  
207.774.4811 www.wintonscott.com

REV #	DATE	DESCRIPTION

Renovations To:  
**CUMBERLAND COLD STORAGE BUILDING**  
Merrill's Wharf, Portland, Maine

PARTITION TYPES & FINISH SCHEDULE  
**A6.1**  
9.23.2010