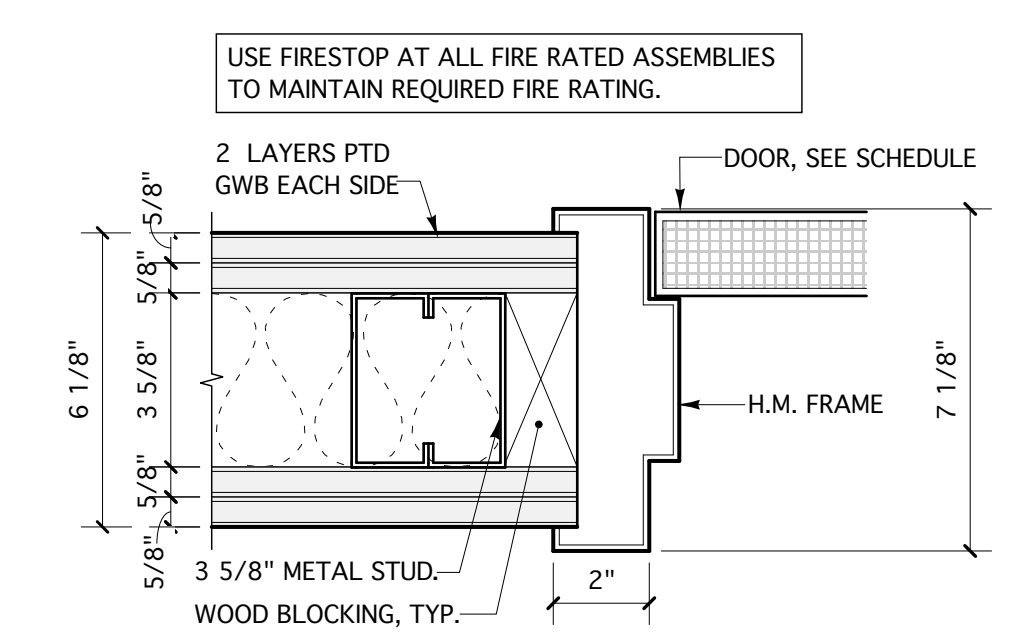
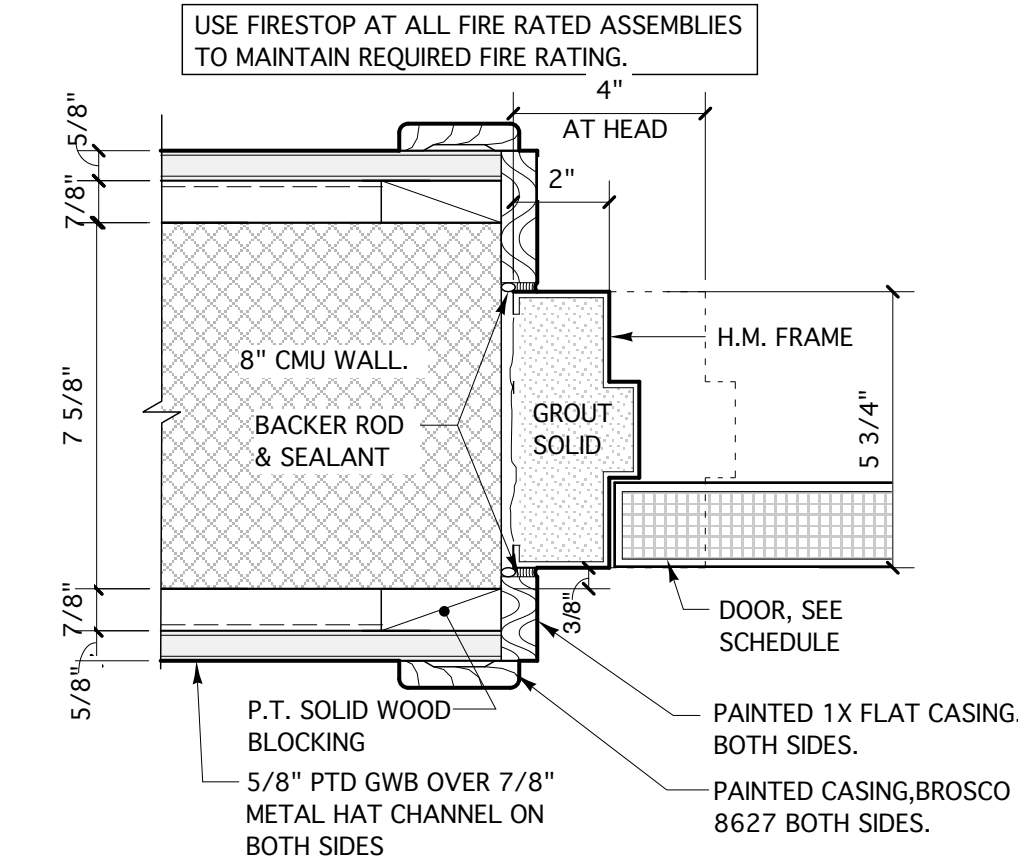


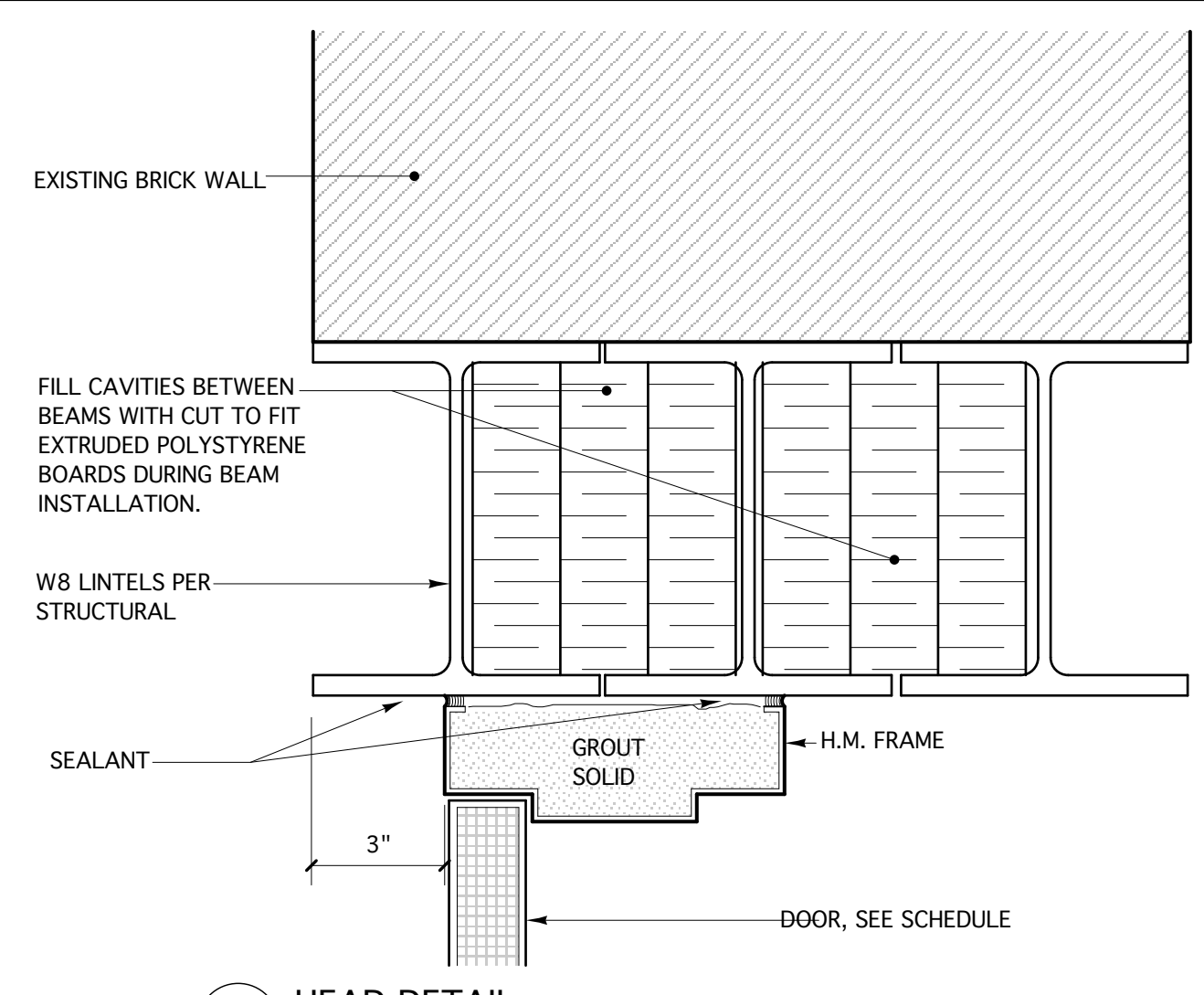
J1 H1 JAMB DETAIL / HEAD SIMILAR
SCALE: 3" = 1'-0"



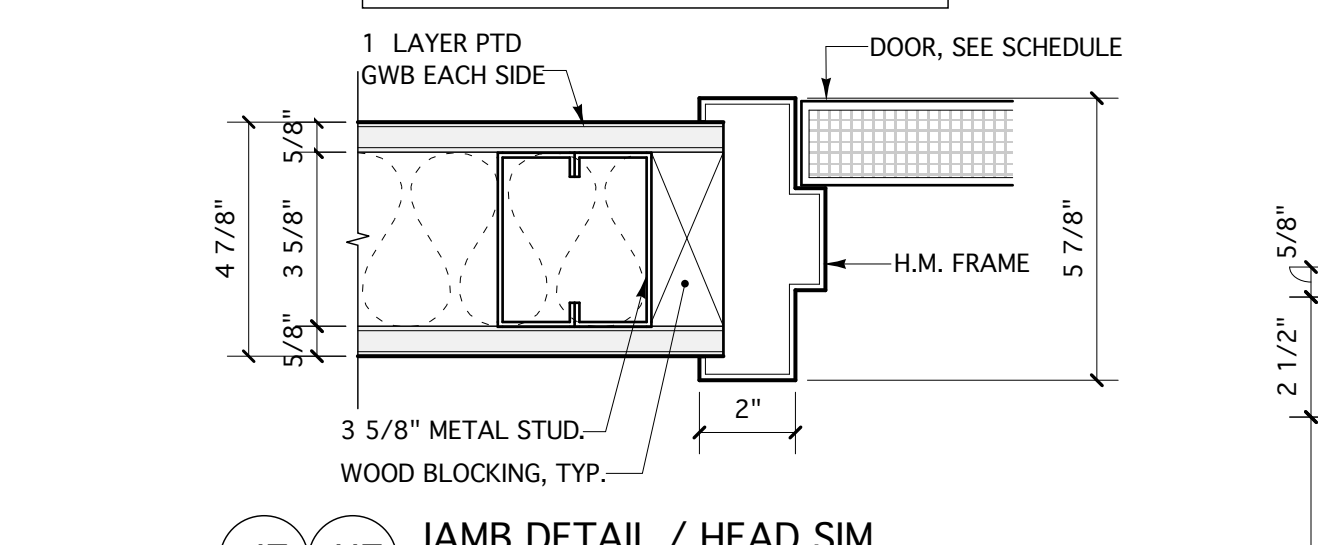
J5 H5 JAMB DETAIL / HEAD SIM
SCALE: 3" = 1'-0"



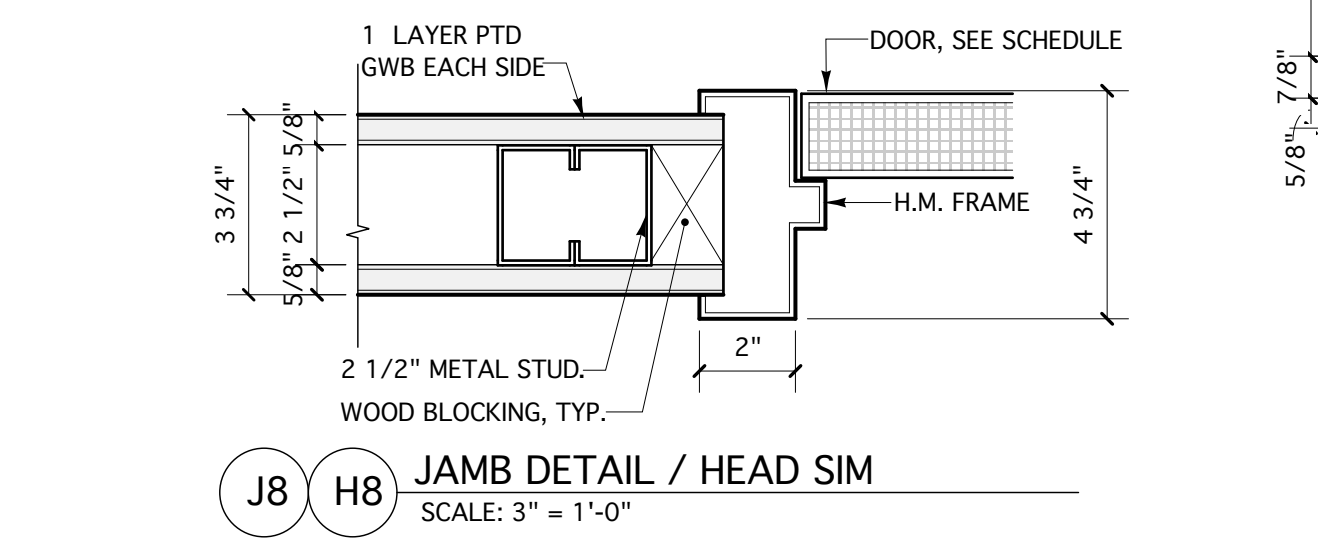
J6 H6 JAMB DETAIL / HEAD SIMILAR
SCALE: 3" = 1'-0"



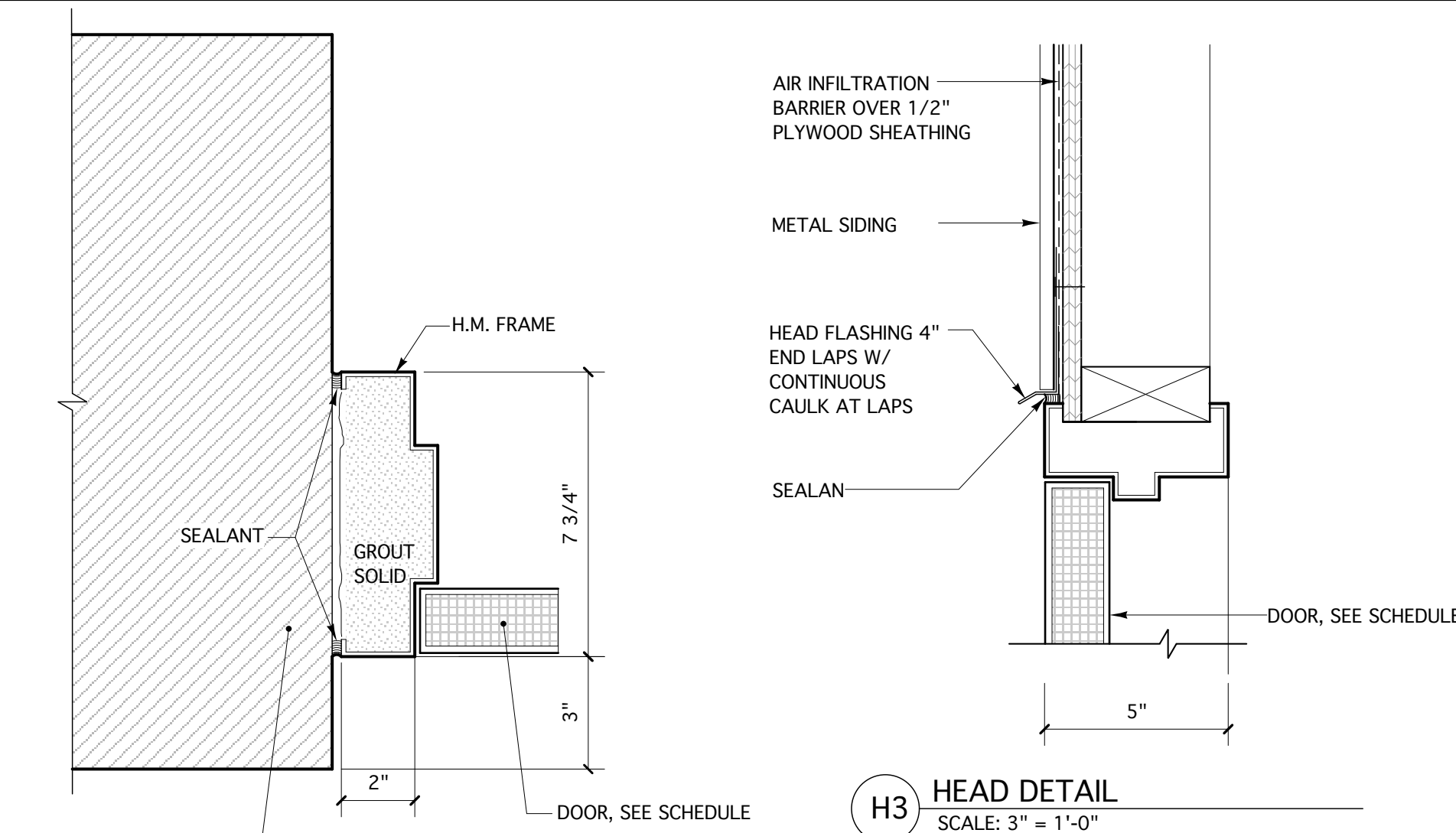
H2 HEAD DETAIL
SCALE: 3" = 1'-0"



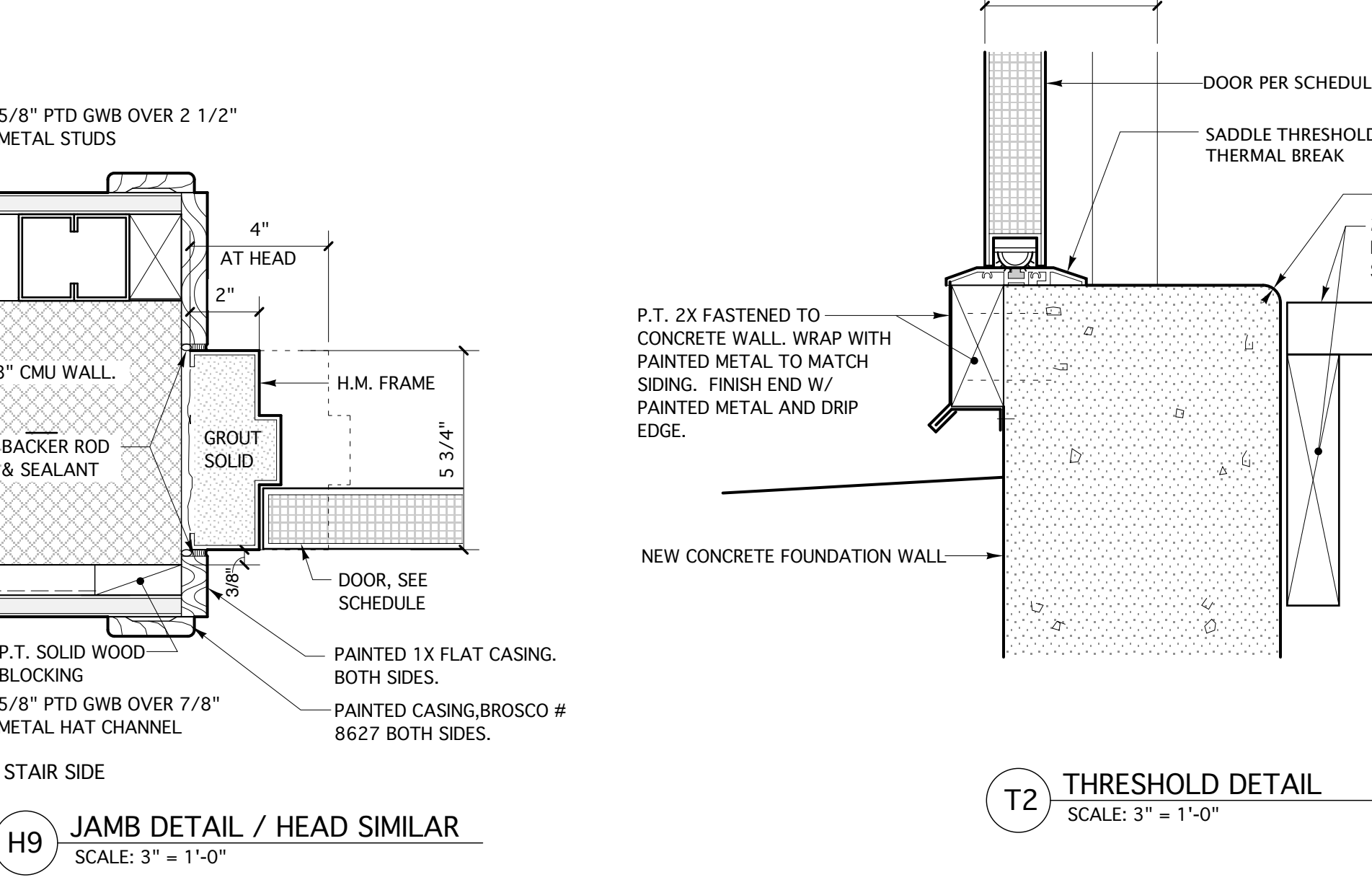
J7 H7 JAMB DETAIL / HEAD SIM
SCALE: 3" = 1'-0"



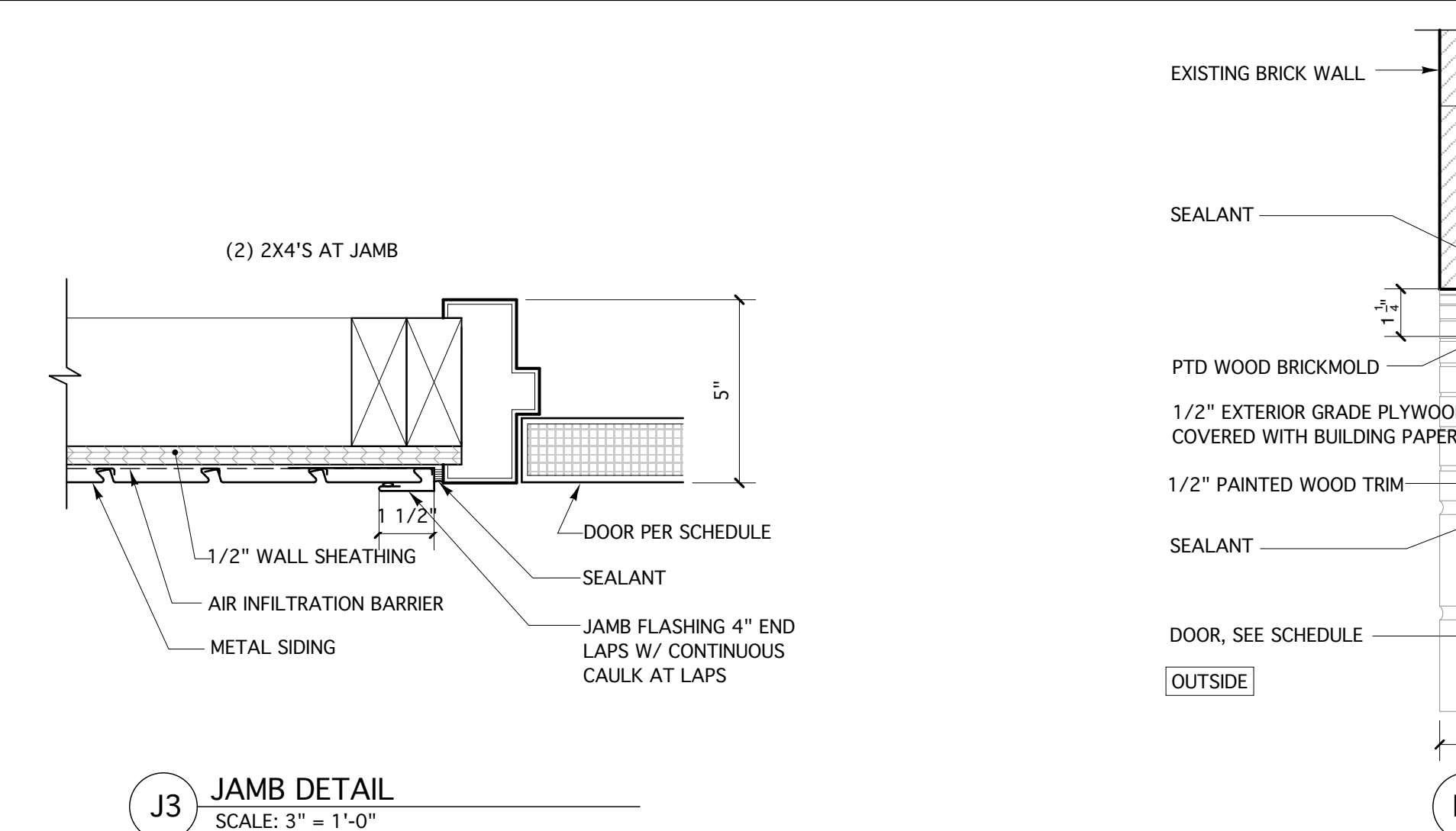
J8 H8 JAMB DETAIL / HEAD SIM
SCALE: 3" = 1'-0"



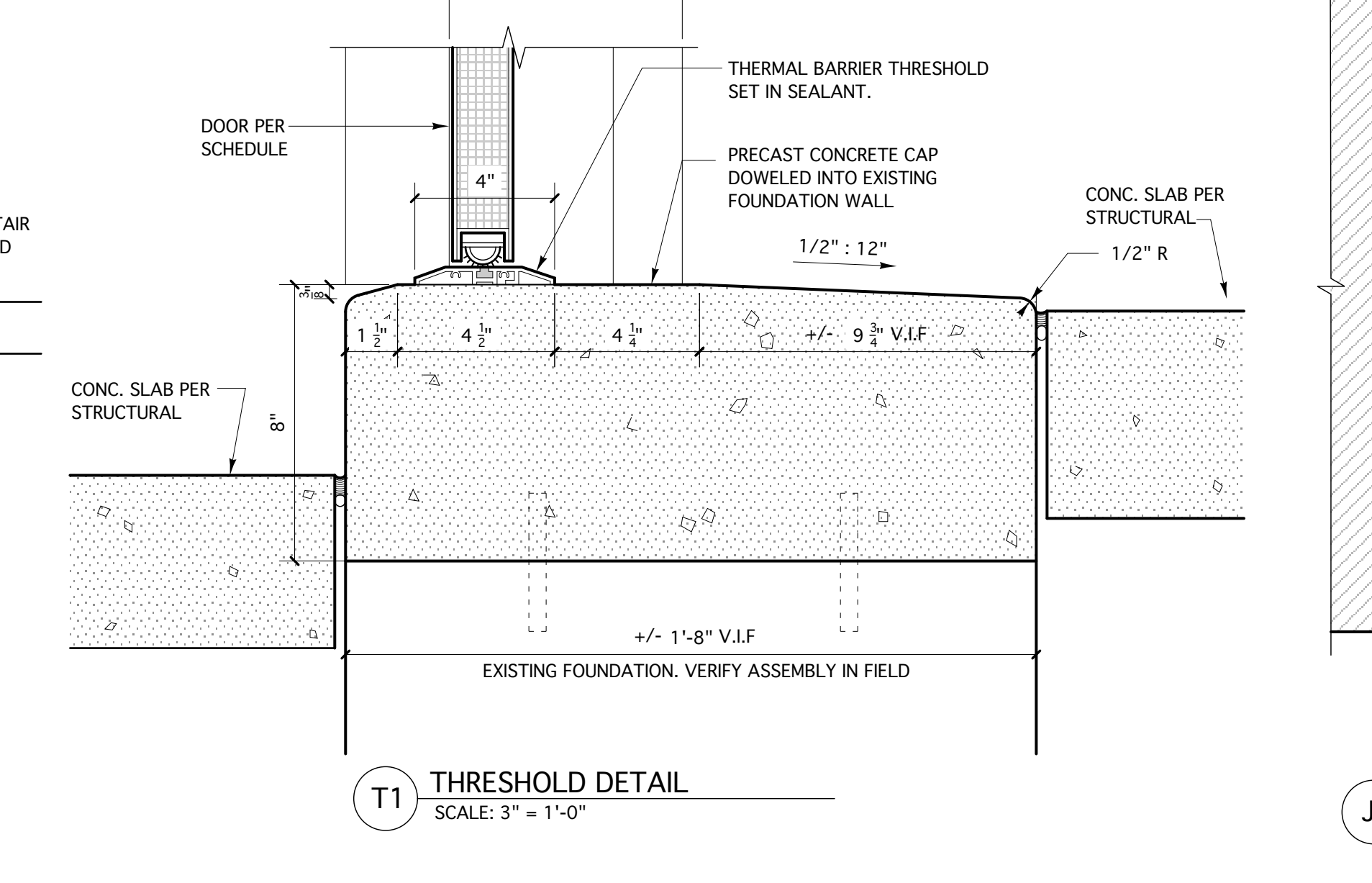
H3 HEAD DETAIL
SCALE: 3" = 1'-0"



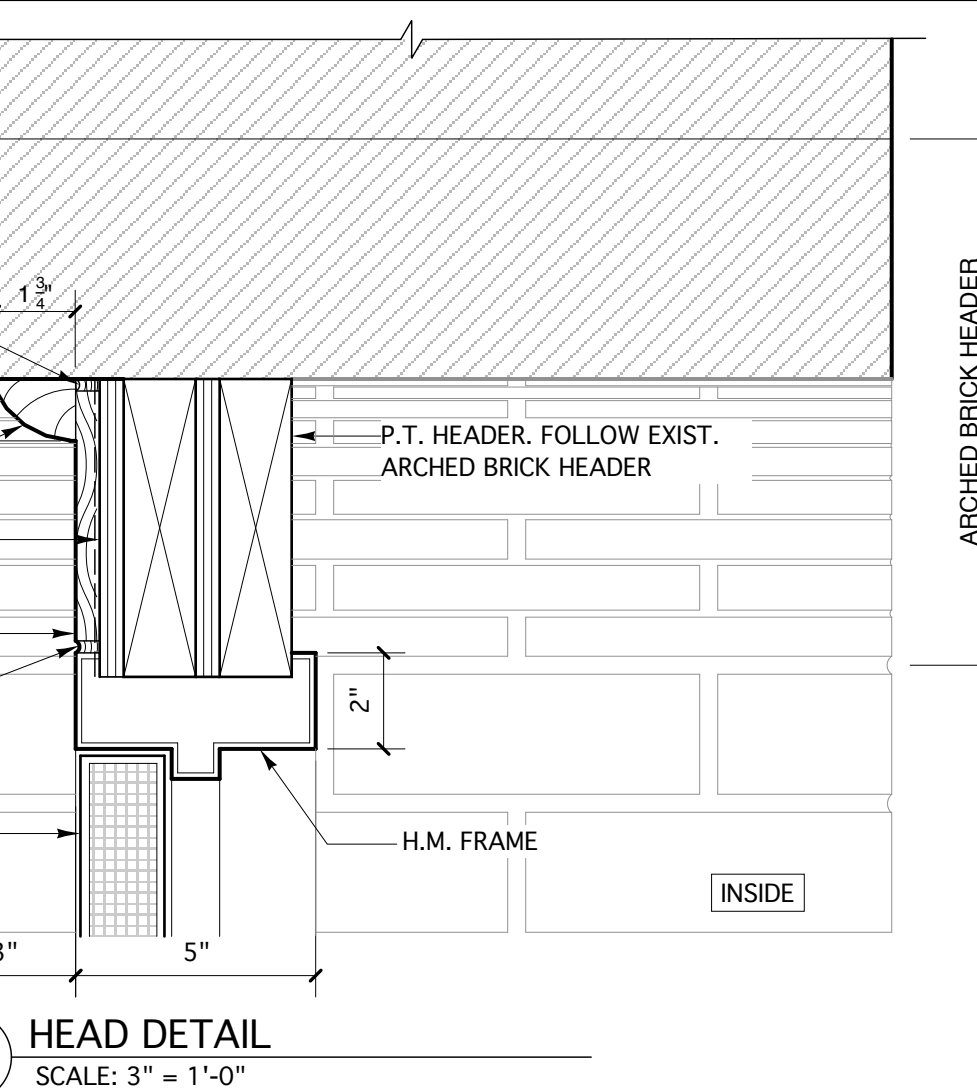
J9 H9 JAMB DETAIL / HEAD SIMILAR
SCALE: 3" = 1'-0"



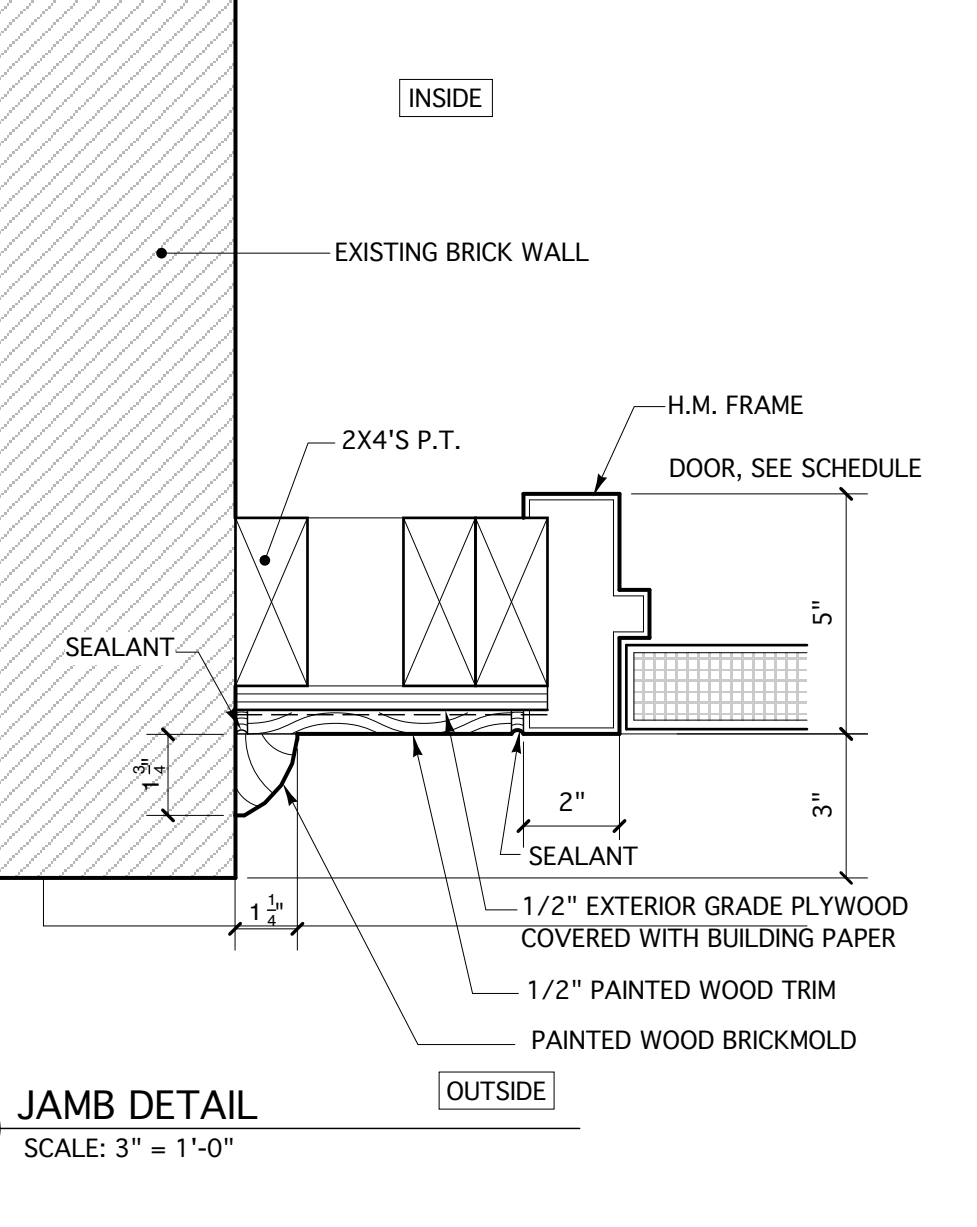
J3 JAMB DETAIL
SCALE: 3" = 1'-0"



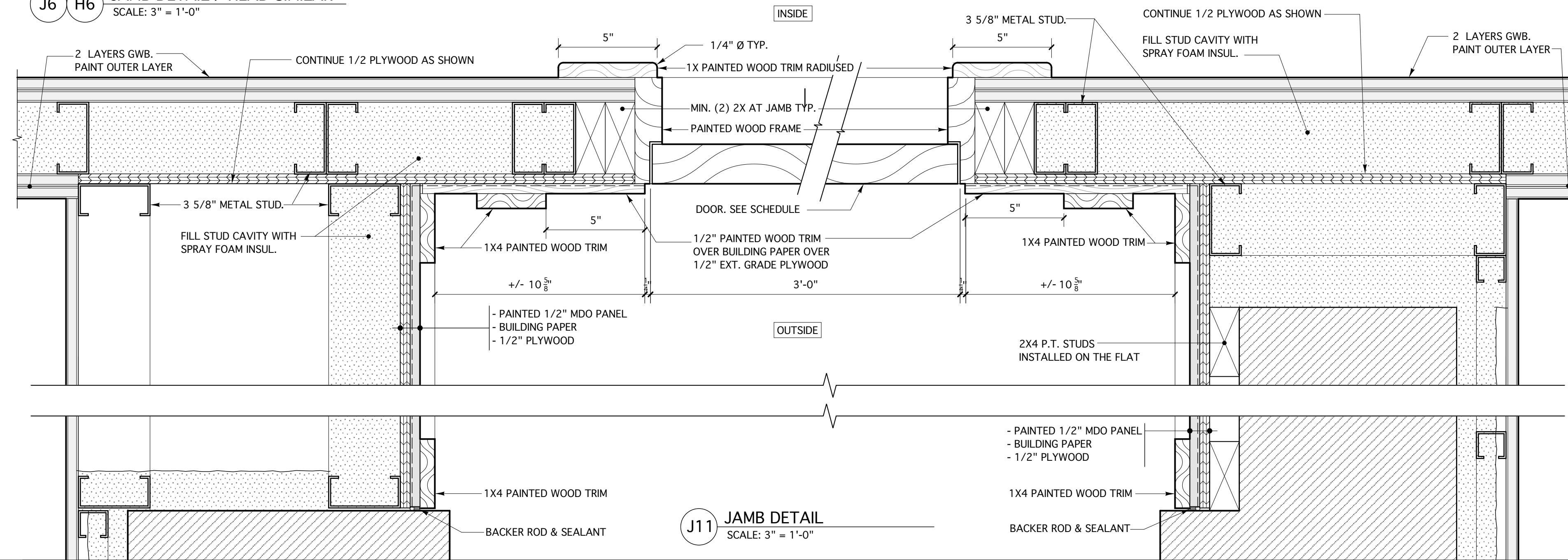
T1 THRESHOLD DETAIL
SCALE: 3" = 1'-0"



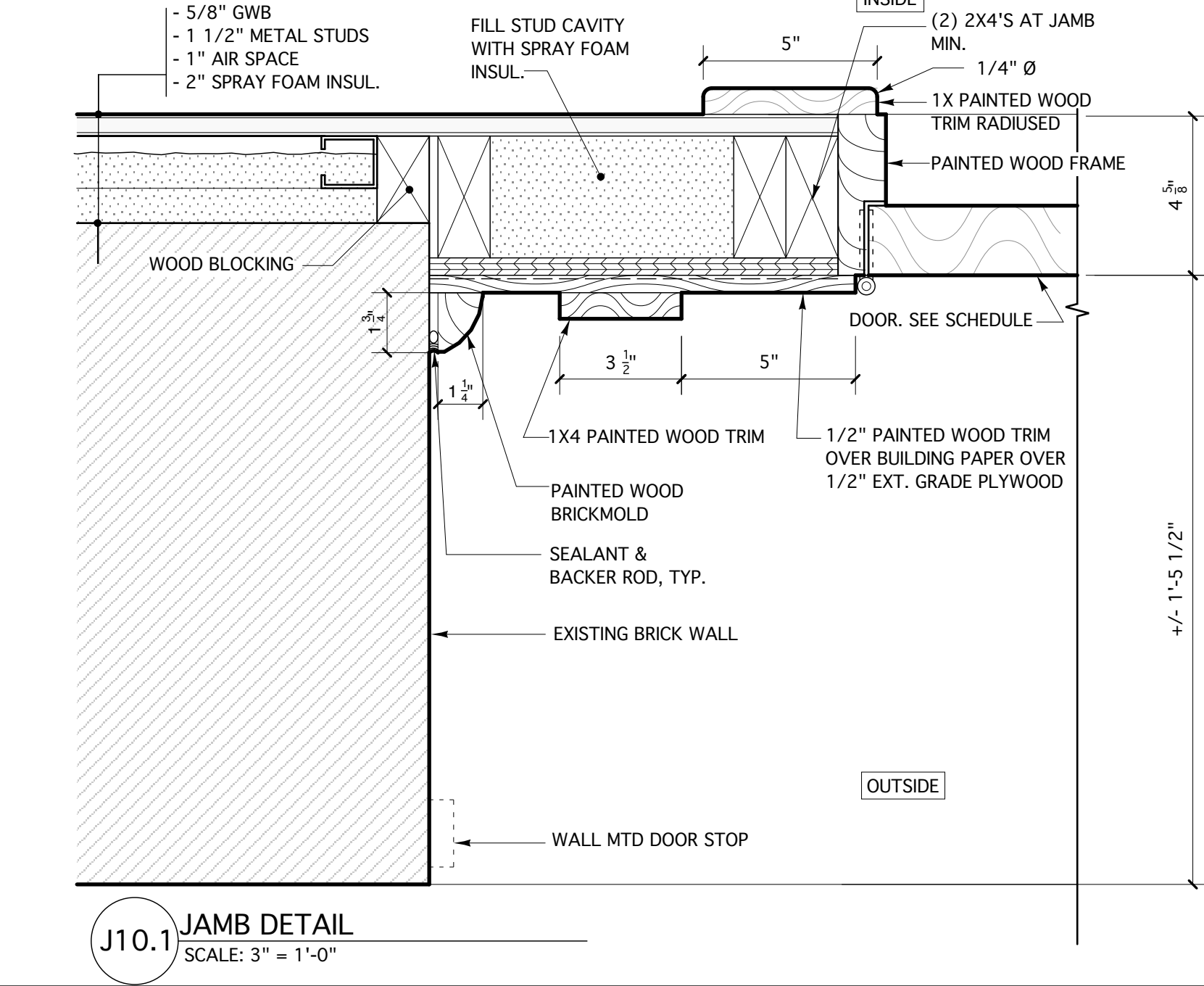
H4 HEAD DETAIL
SCALE: 3" = 1'-0"



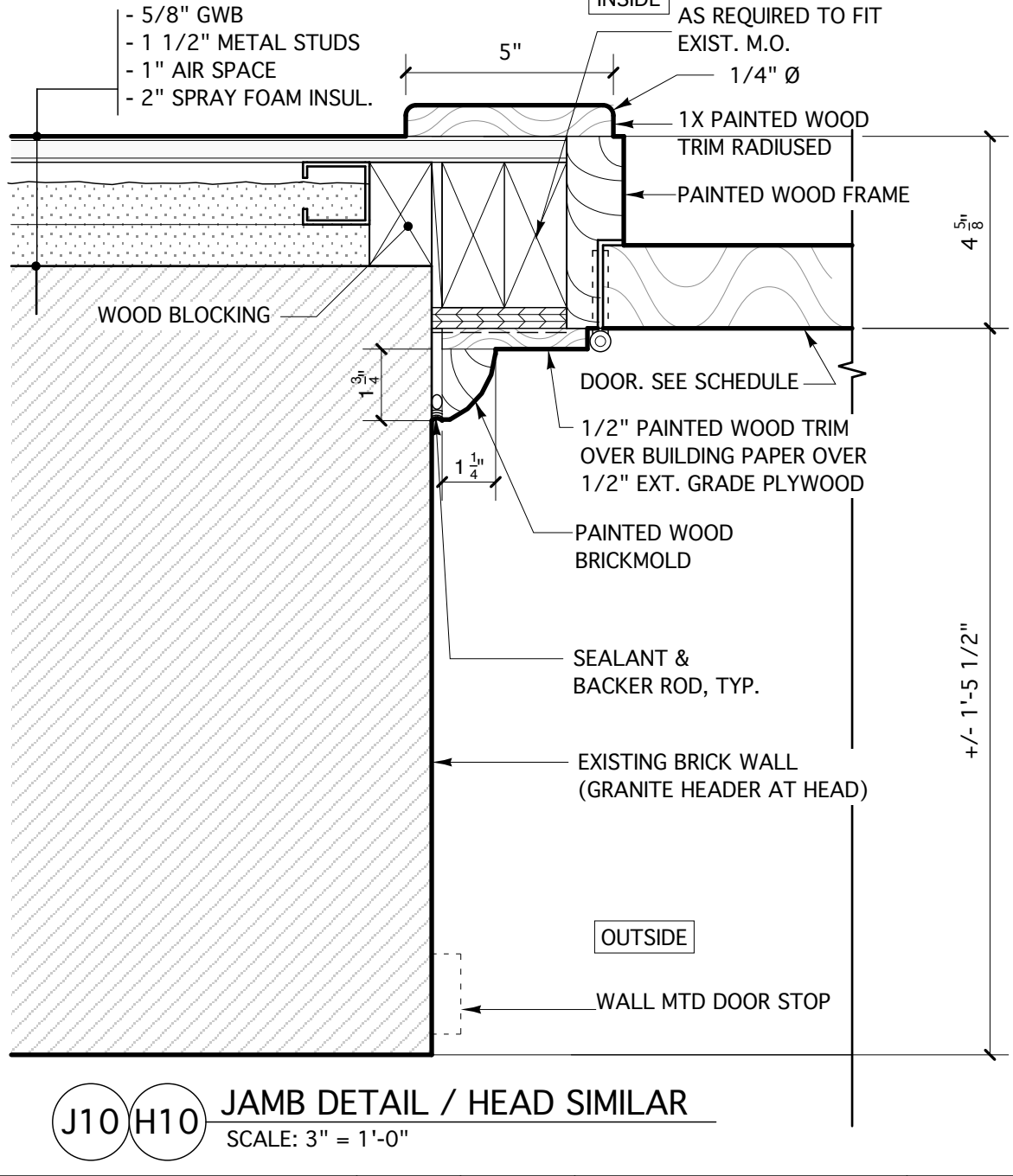
J4 JAMB DETAIL
SCALE: 3" = 1'-0"



J11 JAMB DETAIL
SCALE: 3" = 1'-0"



J10.1 JAMB DETAIL
SCALE: 3" = 1'-0"



J10 H10 JAMB DETAIL / HEAD SIMILAR
SCALE: 3" = 1'-0"

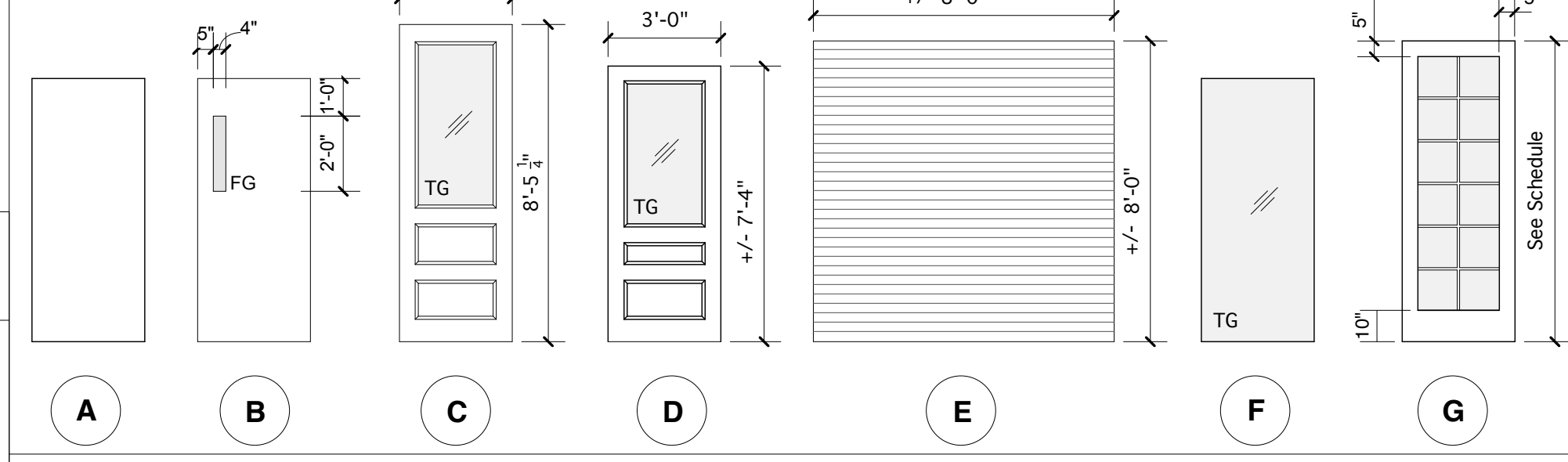
SCHEDULE NOTES & ABBREVIATIONS

- KEYED NOTES**
- Custom wood door. Match profiles of existing original remaining door.
 - Insulated rolling steel door
 - Provide accessible push-button door operator
 - Provide electronic lockset & Hinges w/ card reader and power module. See electrical drawings and Hardware Schedule.
 - Door height to be coordinated according to top of deck. Deck designed by Others.
- ABBREVIATIONS**
- | | |
|------|----------------------|
| FF | Factory Finished |
| PR | Pair |
| HM | Hollow Metal |
| ALUM | Aluminum |
| SCWD | Solid Core Wood Door |
| PTD | Painted |
| OH | Overhead |
- GENERAL NOTES**
- Refer to Specifications for Hardware set descriptions.
 - Contractor to field verify code requirements for tempered glass.
 - Refer to floor plans for door type location.

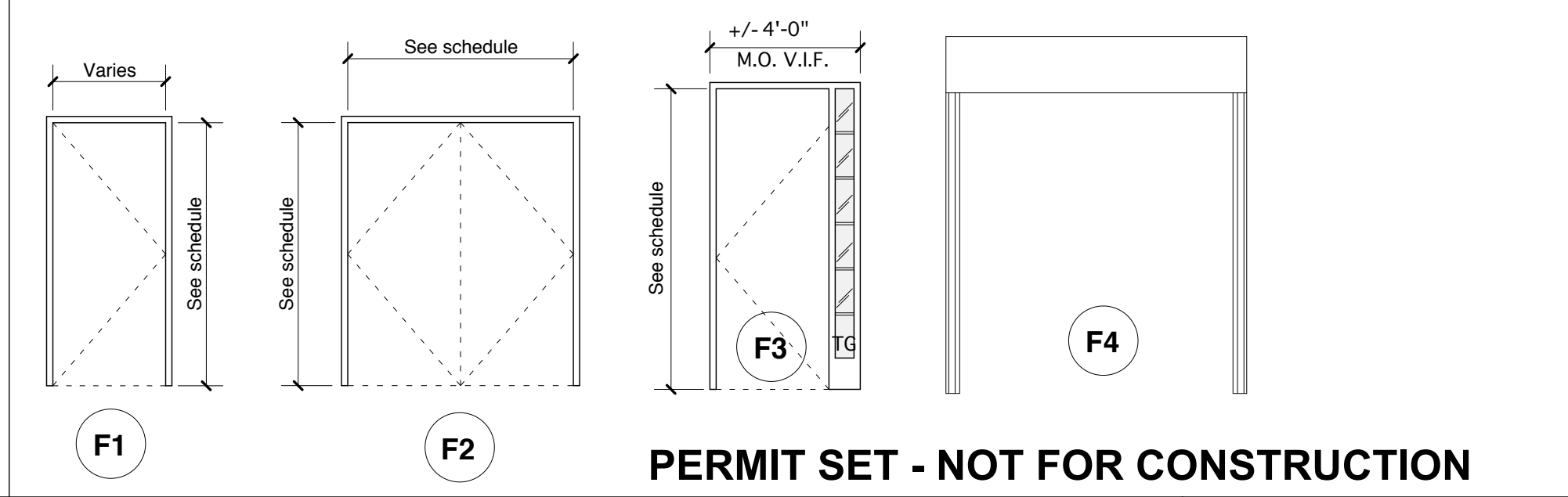
DOOR & FRAME SCHEDULE

Dr. No.	Door Size (WxH)	Thickness	Door				Frame			Details				
			Material	Finish	Type	Material	Finish	Type	Head	Jamb	Threshold	Label	Notes	
BASEMENT														
001	3'-0" x 6'-6" +/- V.I.F.	1 3/4"	HM	PTD	A	HM	PTD	F1	H1	J1	--	45	MIN	
001.1	3'-0" x 6'-8"	1 3/4"	HM	PTD	A	HM	PTD	F1	H2	J2	T1	45	MIN	
001.2	3'-0" x 5'-6" +/-	1 3/4"	HM	PTD	A	HM	PTD	F1	H3	J3	T2			
002	3'-0" x 6'-8"	1 3/4"	HM	PTD	A	HM	PTD	F1	H2	J2	T1			
003	PR 3'-0" x 6'-6" +/- V.I.F.	1 3/4"	HM	PTD	A	HM	PTD	F2	H1	J1	--			
007	3'-0" x 6'-6" +/- V.I.F.	1 3/4"	HM	PTD	A	HM	PTD	F1	H1	J1	--	90	MIN	
009	3'-0" x 4'-0" +/-	1 3/4"	HM	PTD	A	HM	PTD	F1	H4	J4	T3			
FIRST FLOOR														
100	3'-0" x 8'-5" +/-	1 3/4"	WOOD	PTD	C	WOOD	PTD	F1	H10	J10	T4			1
100.1	3'-0" x 8'-5"	1 3/4"	WOOD	PTD	C	WOOD	PTD	F1	H10	J10.1	T4			1
101	3'-0" x 7'-4" +/-	1 3/4"	WOOD	PTD	D	WOOD	PTD	F1	H11	J11	T5			1
101.1	3'-0" x 7'-0"	1 3/4"	HM	PTD	B	HM	PTD	F1	H5	J5	--	90	MIN	
101.2	3'-0" x 7'-0"	1 3/4"	HM	PTD	B	HM	PTD	F1	H5	J5	--	90	MIN	
101.3	3'-0" x 7'-0"	1 3/4"	HM	PTD	B	HM	PTD	F1	H5	J5	--	90	MIN	
106	3'-0" x 7'-0"	1 3/4"	SCWD	NATURAL	A	HM	PTD	F1	H7	J7	--			
107	3'-4" x 7'-0"	1 3/4"	SCWD	NATURAL	A	HM	PTD	F1	H5	J5	--	90	MIN	
108	OH 8'-0" X 8'-0" +/- V.I.F.	3 1/4"	STEEL	FF	E	STEEL	FF	F4	H13	J13	T6			2
109	3'-0" x 7'-4" +/-	1 3/4"	WOOD	PTD	D	WOOD	PTD	F1	H12	J12	T7			
109.1	3'-0" x 7'-0"	1 3/4"	SCWD	NATURAL	B	HM	PTD	F1	H7	J7	--	60	MIN	
109.2	3'-0" x 7'-0"	1 3/4"	SCWD	NATURAL	B	HM	PTD	F1	H7	J7	--	60	MIN	
110	3'-0" x 7'-0"	1 3/4"	SCWD	NATURAL	A	HM	PTD	F1	H7	J7	--	45	MIN	
112	PR 3'-0" x 7'-0"	1 3/4"	BUILT UP BUTT GLAZED	CLR	F	--	--	--	HX	JX	TX			3
112.1	PR 3'-0" x 7'-0"	1 3/4"	BUILT UP BUTT GLAZED	CLR	F	--	--	--	HX	JX	TX			3
114	3'-0" x 7'-0"	1 3/4"	SCWD	NATURAL	A	HM	PTD	F1	H7	J7	--	45	MIN	
115	3'-0" x 7'-0"	1 3/4"	SCWD	NATURAL	A	HM	PTD	F1	H7	J7	--	45	MIN	
120	3'-0" x 7'-0"	1 3/4"	SCWD	NATURAL	B	HM	PTD	F1	H5	J5	--	90	MIN	
SECOND FLOOR														
201A	3'-0" x 7'-0"	1 3/4"	SCWD	NATURAL	A	HM	PTD	F1	H8	J8	--			
247	3'-0" x 7'-0"	1 3/4"	SCWD	NATURAL	B	HM	PTD	F1	H9	J9	--	90	MIN	
255	3'-0" x 7'-0"	1 3/4"	SCWD	NATURAL	B	HM	PTD	F1	H6	J6	--	90	MIN	
THIRD FLOOR														
301A	3'-0" x 7'-0"	1 3/4"	SCWD	NATURAL	A	HM	PTD	F1	H8	J8	--			
305	3'-0" x 7'-0"	1 3/4"	SCWD	NATURAL	B	HM	PTD	F1	H6	J6	--	90	MIN	4
355	3'-0" x 7'-0"	1 3/4"	SCWD	NATURAL	B	HM	PTD	F1	H6	J6	--	90	MIN	4
FOURTH FLOOR														
401A	3'-0" x 7'-0"	1 3/4"	SCWD	NATURAL	A	HM	PTD	F1	H8	J8	--			
405	3'-0" x 7'-0"	1 3/4"	SCWD	NATURAL	B	HM	PTD	F1	H6	J6	--	90	MIN	4
456	3'-0" x 7'-0"	1 3/4"	SCWD	NATURAL	B	HM	PTD	F1	H6	J6	--	90	MIN	4
FIFTH FLOOR														
501A	3'-0" x 7'-0"	1 3/4"	SCWD	NATURAL	A	HM	PTD	F1	H8	J8	--			
523	3'-0" x 7'-0"	1 3/4"	SCWD	NATURAL	B	HM	PTD	F1	H6	J6	--	90	MIN	4
545.3	3'-0" x 8'-0" +/-	1 3/4"	ALUM	FF	G	ALUM	FF	F3	H14	J14	T8			5
546	3'-0" x 7'-0"	1 3/4"	SCWD	NATURAL	B	HM	PTD	F1	H6	J6	--	90	MIN	4
546.1	3'-0" x 7'-0"	1 3/4"	HM	PTD	A	HM	PTD	F1	H8	J8	--			

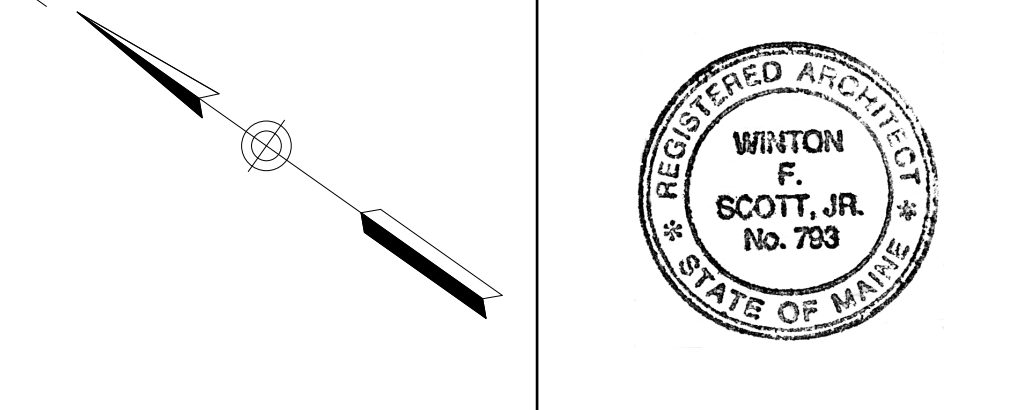
DOOR TYPES



FRAME TYPES



PERMIT SET - NOT FOR CONSTRUCTION



Blais Civil Engineers, PA
780 Broadway
South Portland, ME 04106
T. 207.767.7300
sblaise@blaisece.com

Bartlett Design
942 Washington Street
Bath, ME 04530
T. 207.443.5447 F. 207.443.5560
bartdes@blazenet.net

Mechanical Systems Engineers
Royal River Center, Unit #10
10 Forest Falls Drive, Yarmouth, ME 04096
T. 207.846.1441 F. 207.846.1443

Carroll Associates Landscape Architects
217 Commercial Street, Suite 200
Portland, ME 04101
T. 207.772.1552 F. 207.0712

Becker Structural Engineers, Inc.
75 York Street, Portland, ME 04101
T. 207.879.1838 F. 207.879.1822
www.beckerstructural.com

Winton Scott Architects, PA
5 Milk Street, Portland, ME 04101
207.774.4811 www.wintonscott.com

REV #	DATE	DESCRIPTION

Renovations To:
CUMBERLAND COLD STORAGE BUILDING
Merrill's Wharf, Portland, Maine

DOOR SCHEDULE AND DETAILS
A4.6
9.23.2010