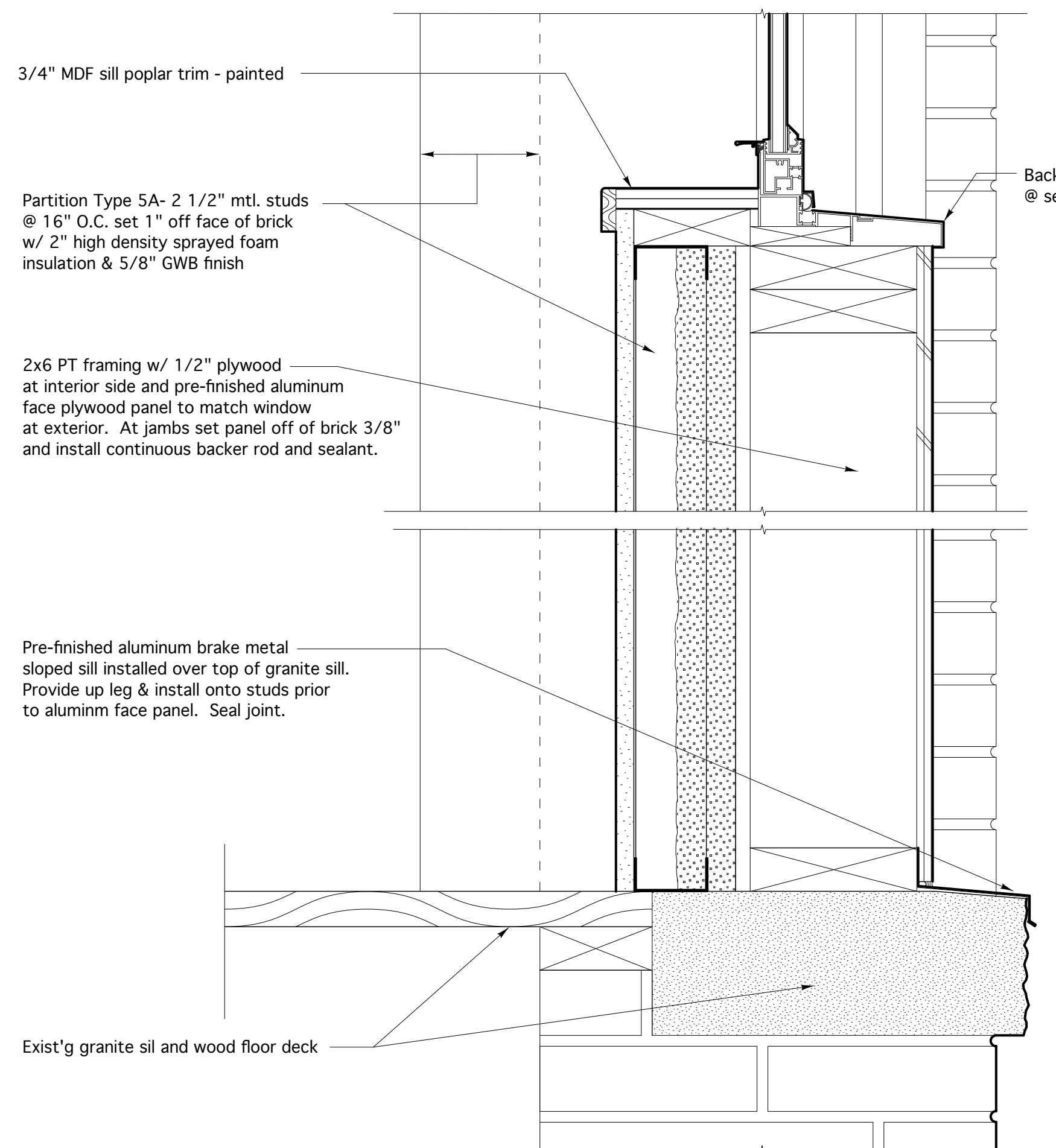
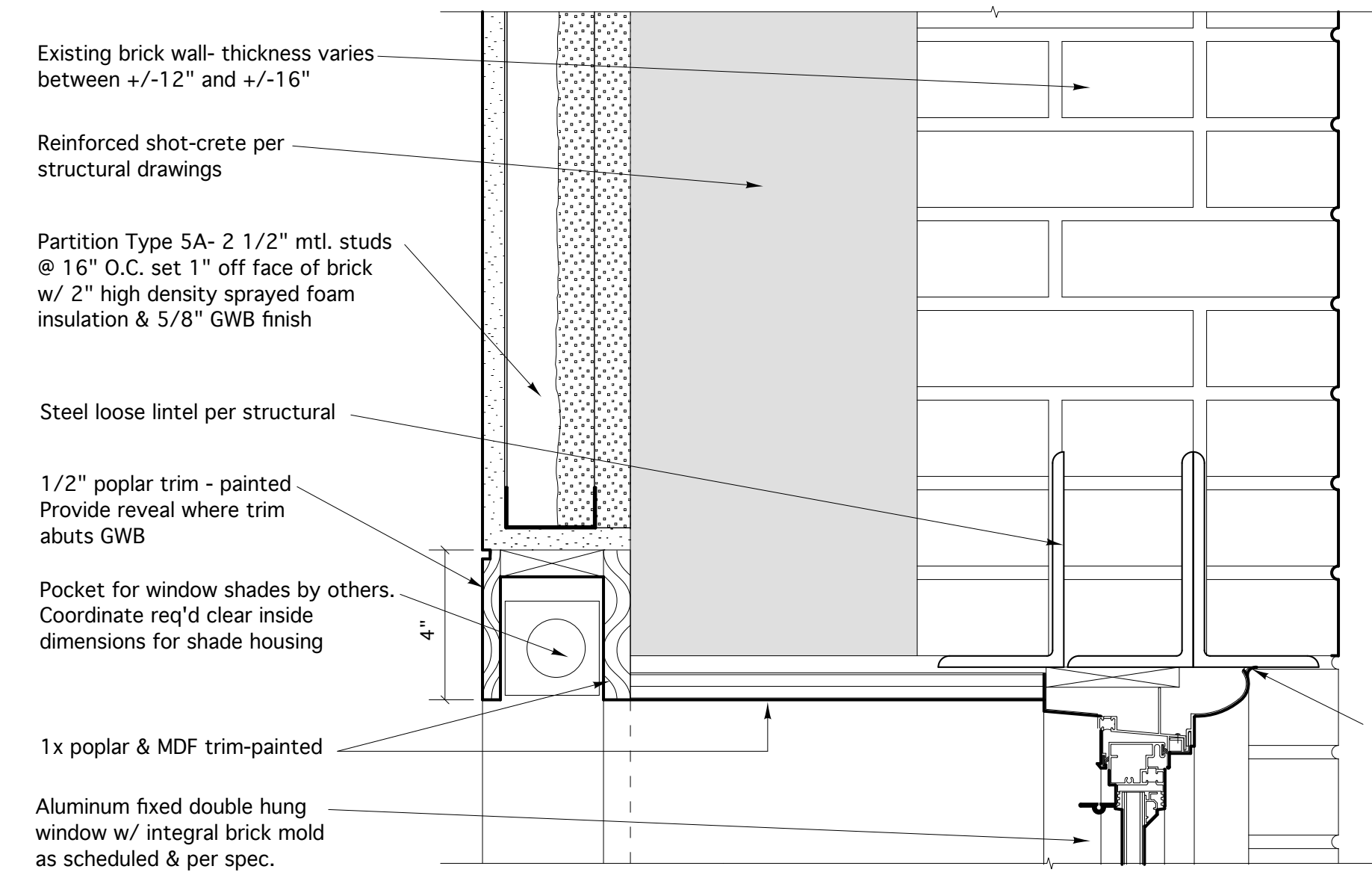


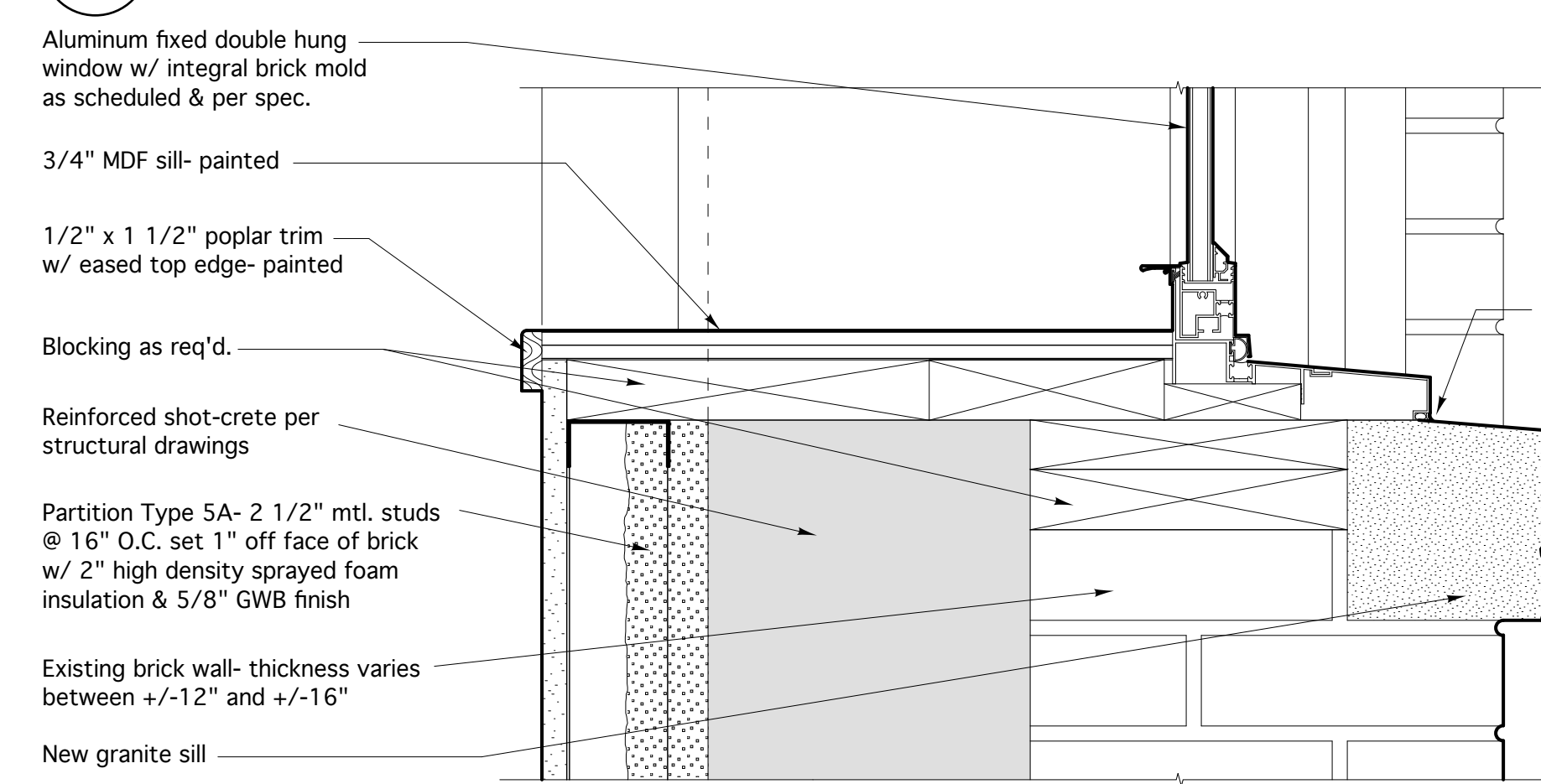
14 JOINING MULLION DETAIL @ NORTH WALL for floors 2,3,4,5
Scale: 3"=1'-0"



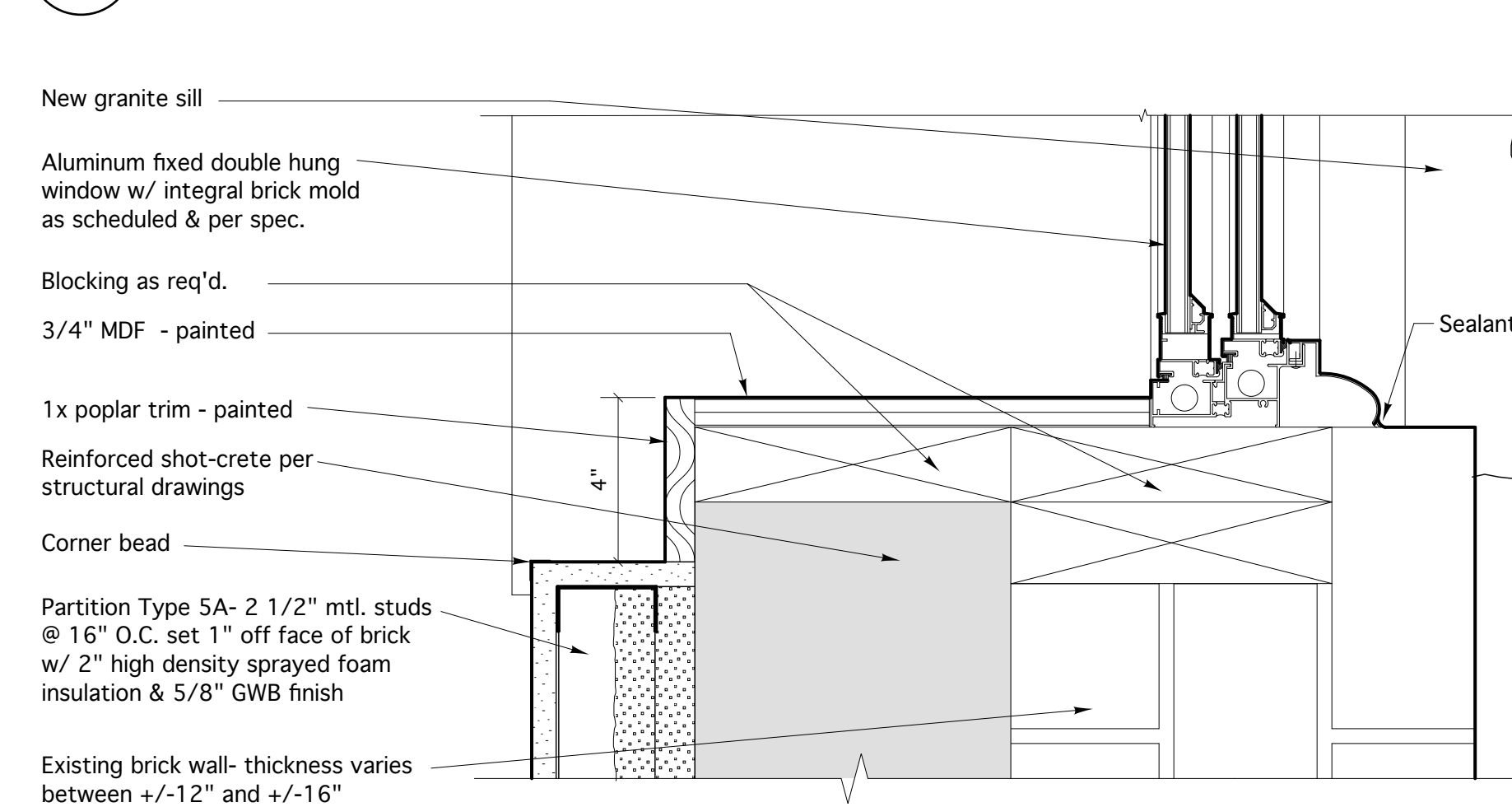
13 SILL/INFILL PANEL DETAIL @ floor 1
Scale: 3"=1'-0"



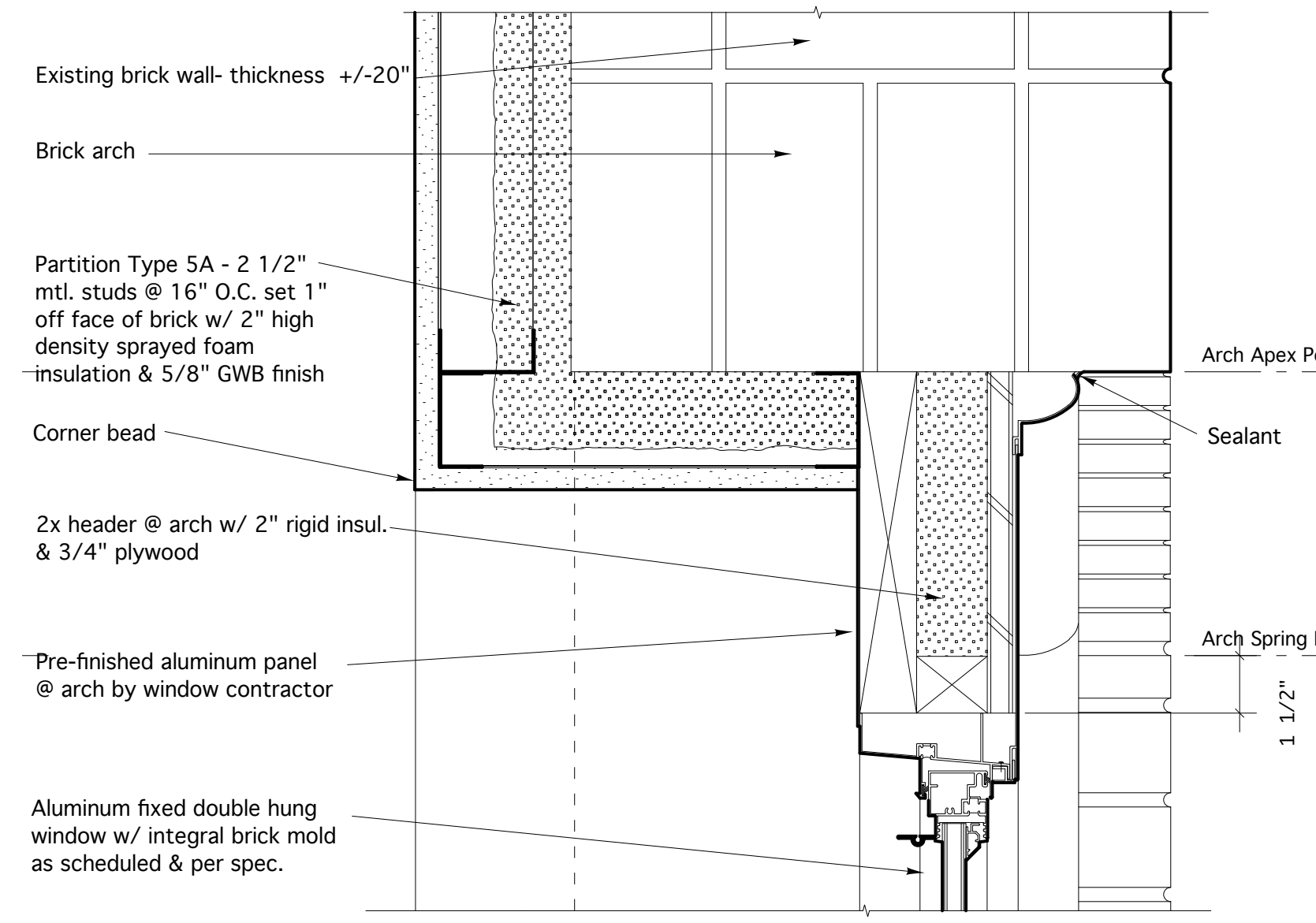
12 TYPICAL HEAD DETAIL @ SOUTH WALL for floors 2, 3,4,5
Scale: 3"=1'-0"



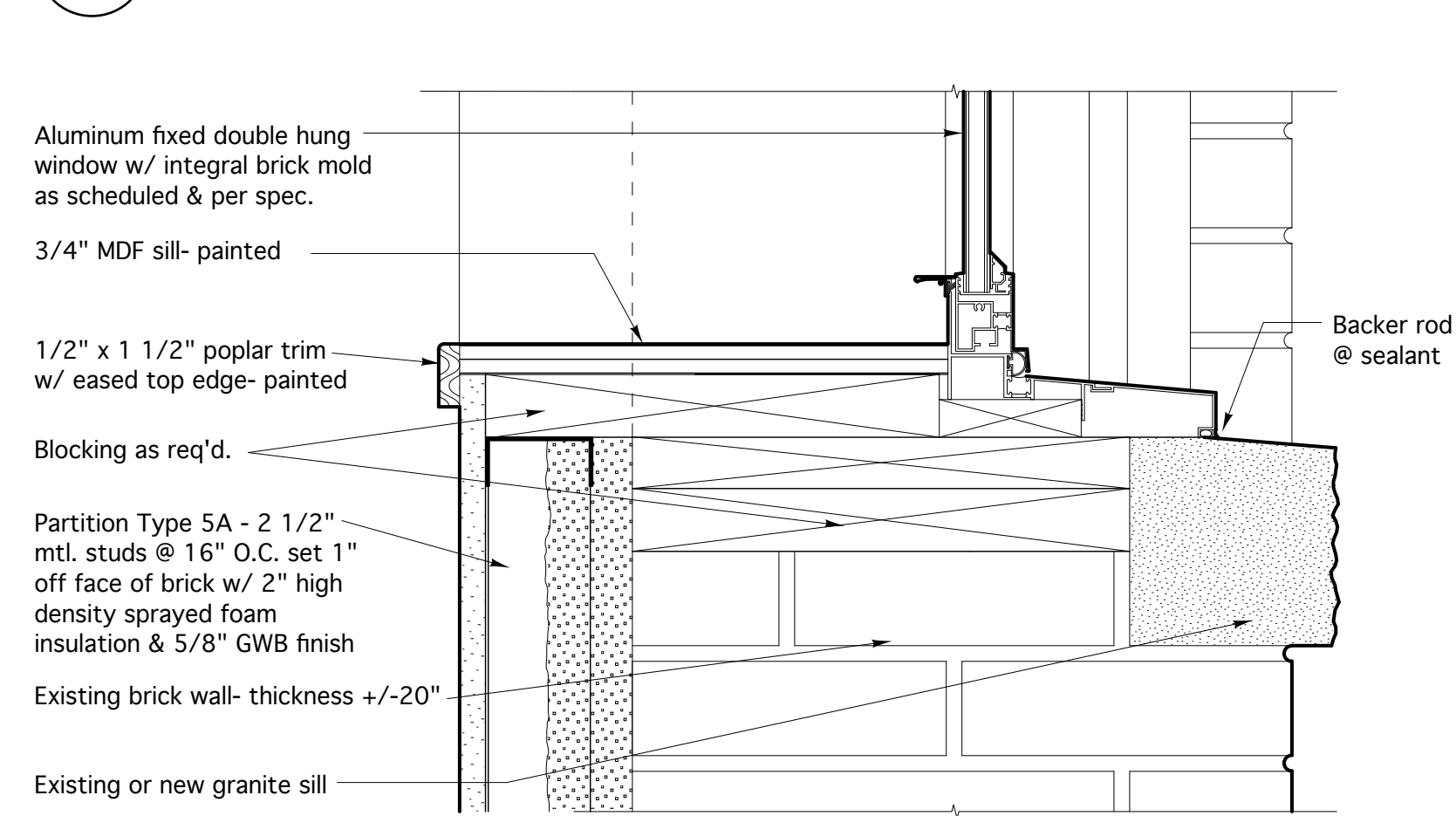
11 TYPICAL SILL DETAIL @ SOUTH WALL for floors 2,3,4,5
Scale: 3"=1'-0"



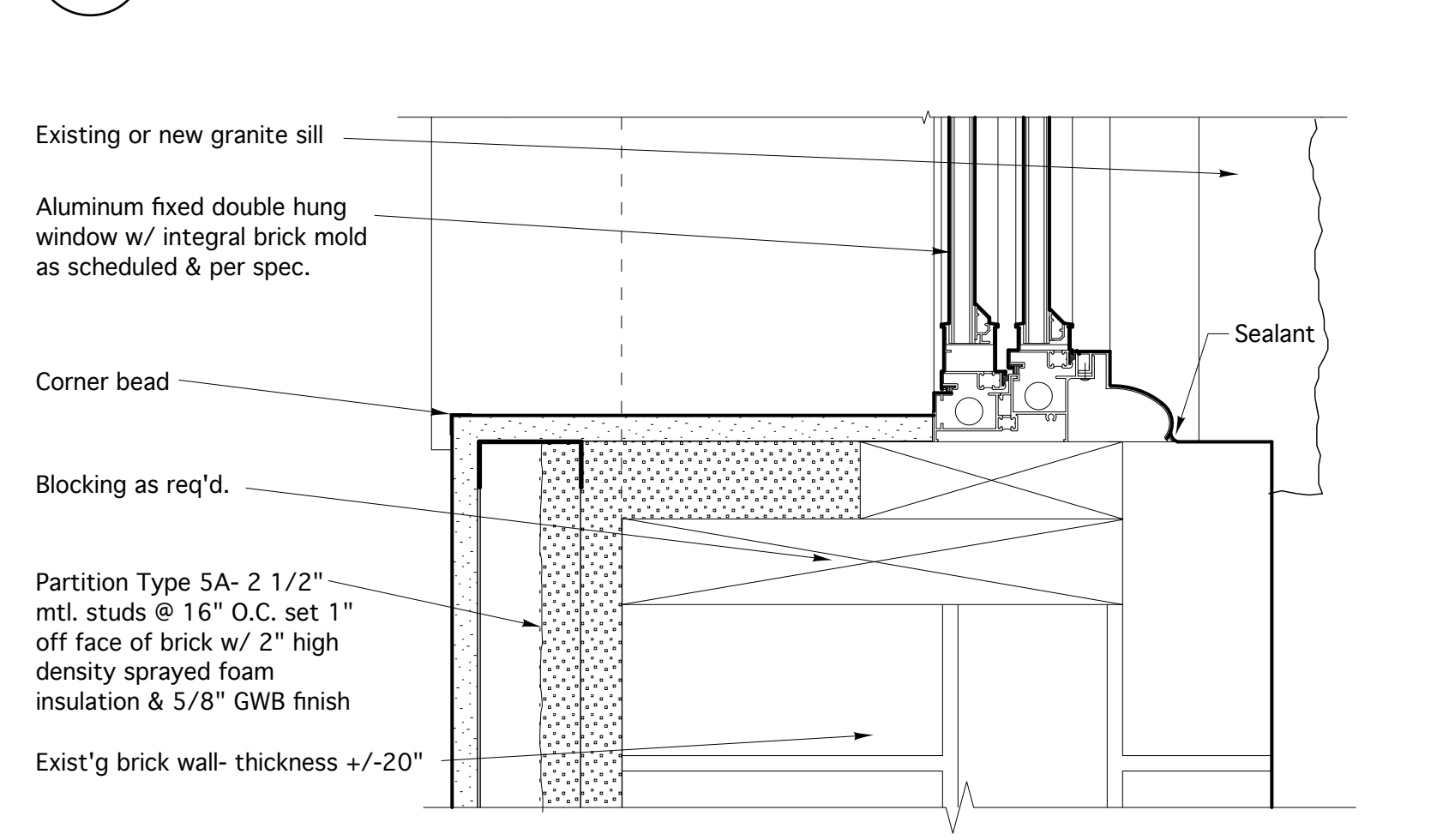
10 TYPICAL JAMB DETAIL @ SOUTH WALL for floors 2,3,4,5
Scale: 3"=1'-0"



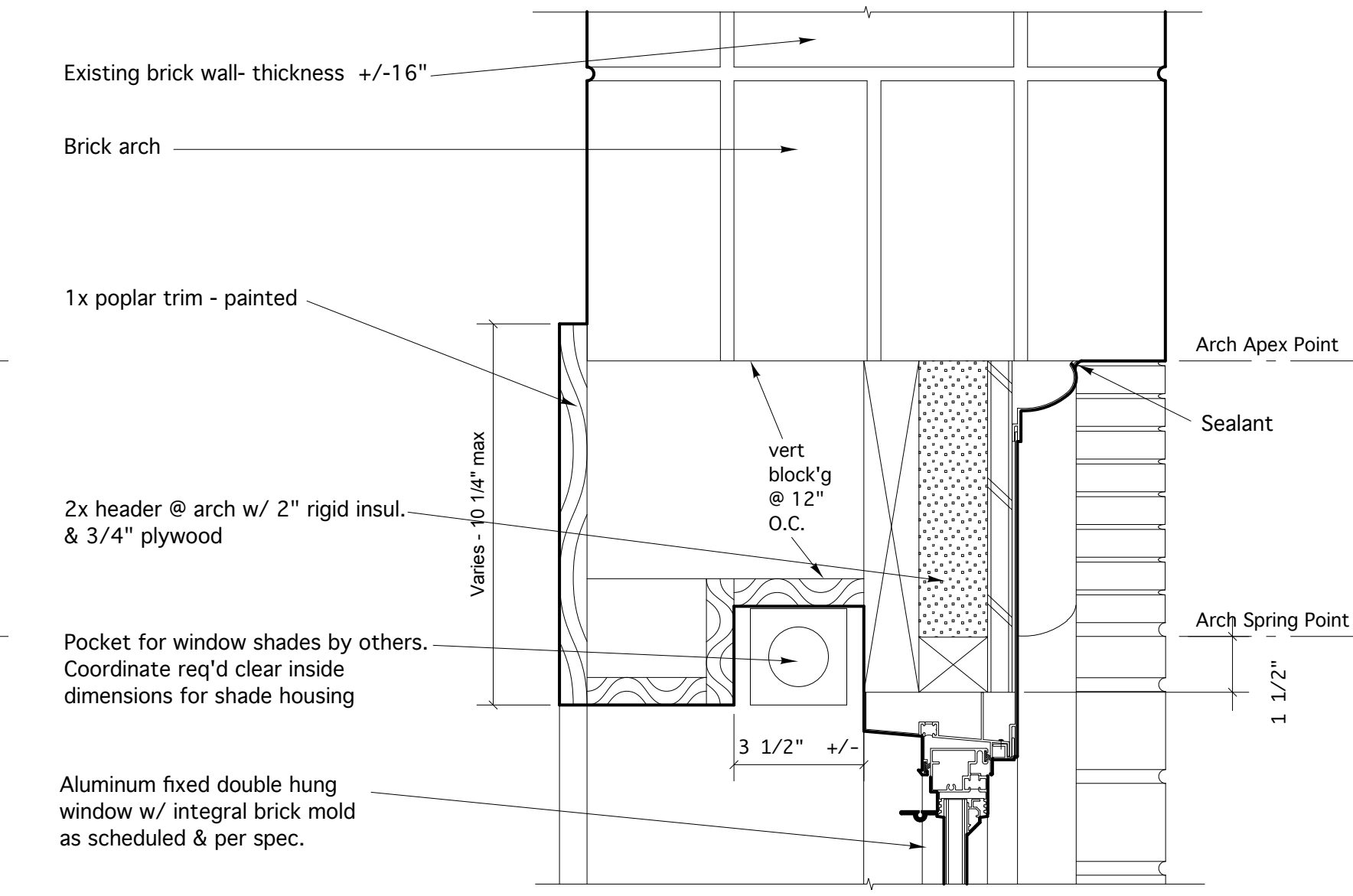
9 TYPICAL HEAD DETAIL @ BRICK ARCH for floor 1
Scale: 3"=1'-0"



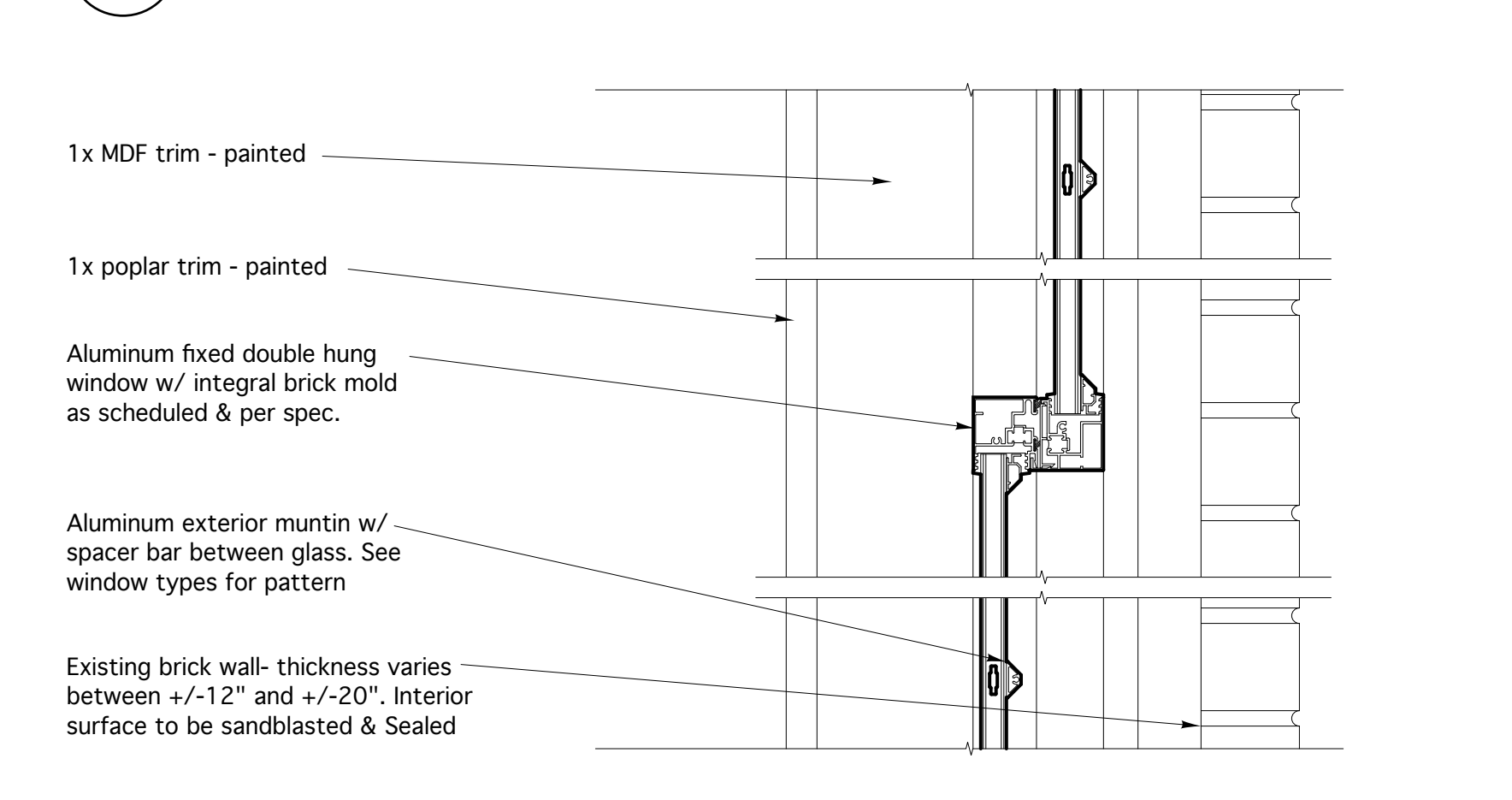
8 TYPICAL SILL DETAIL for floor 1
Scale: 3"=1'-0"



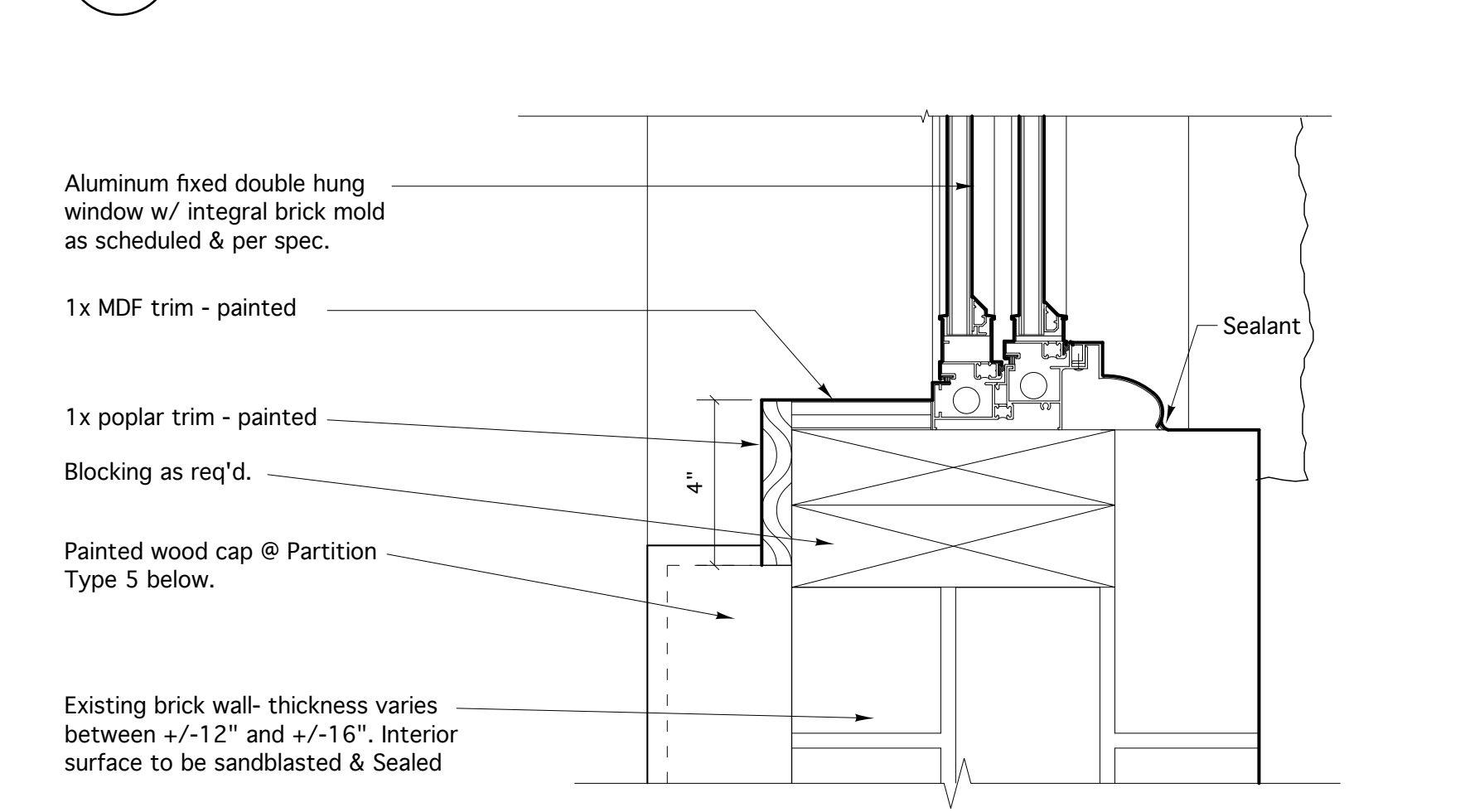
7 JAMB CONDITION @ floor 1
Scale: 3"=1'-0"



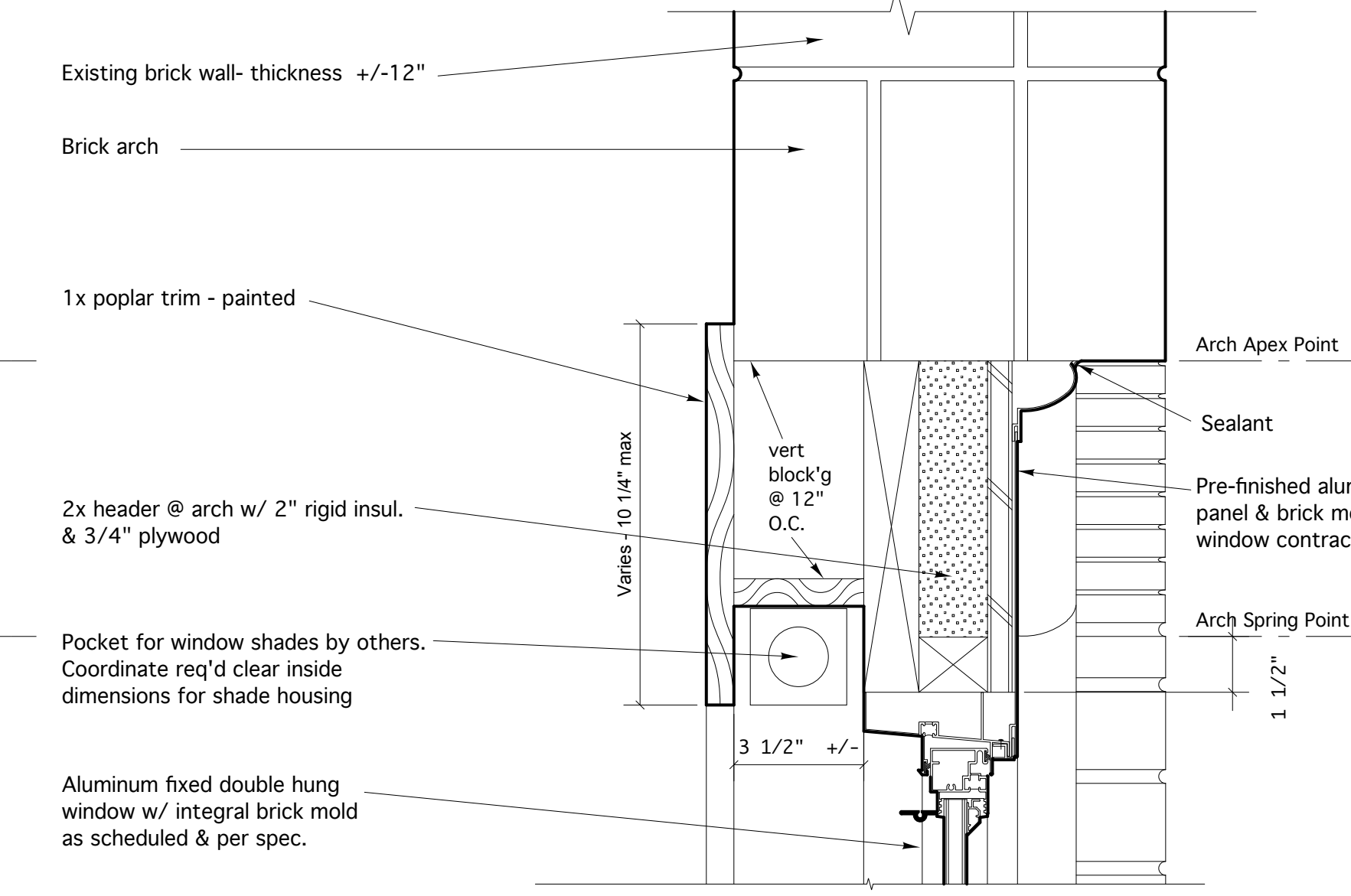
6 TYPICAL HEAD DETAIL @ BRICK ARCH for floors 2, 3
Scale: 3"=1'-0"



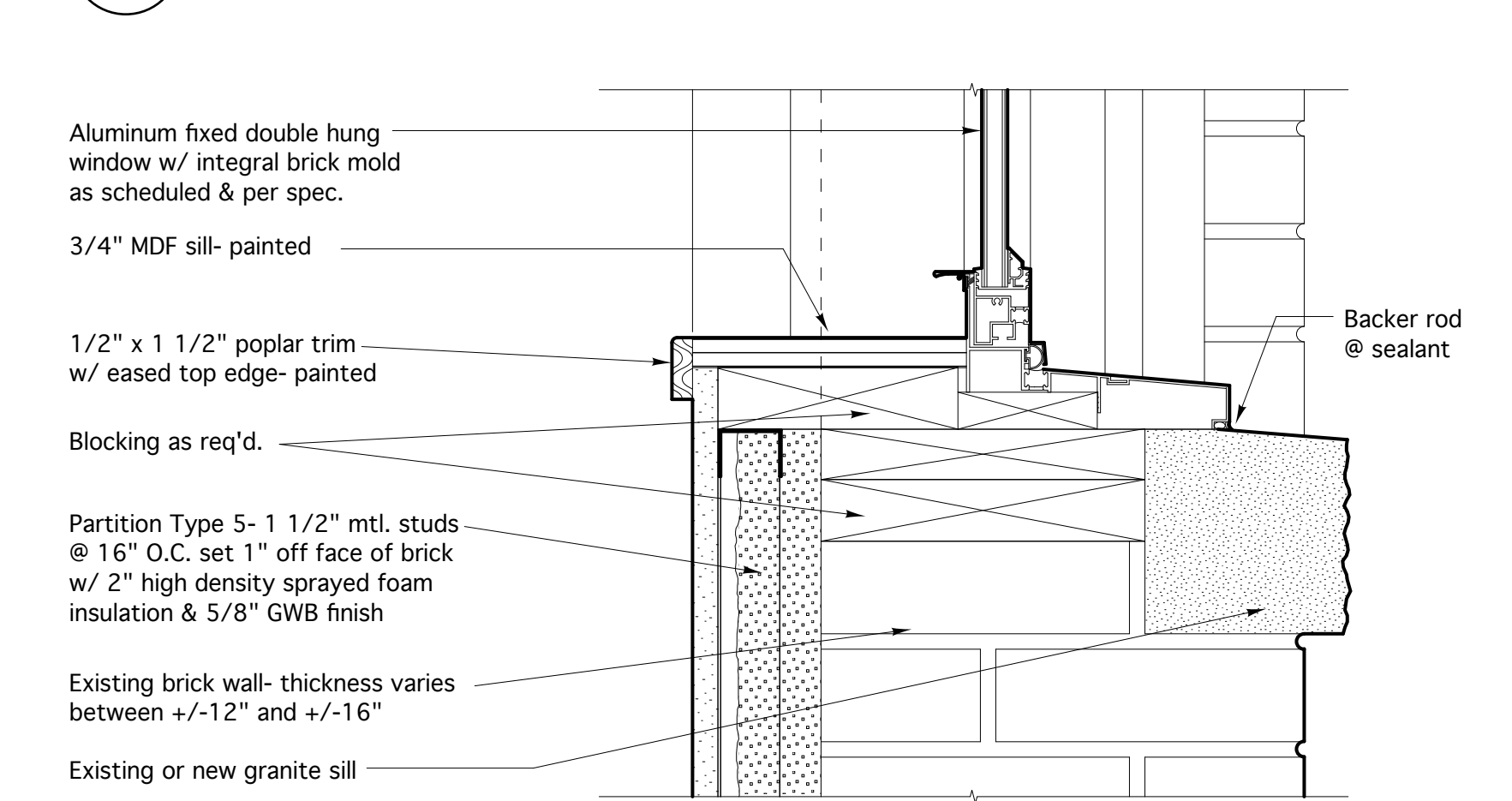
5 TYPICAL MEETING RAIL & MUNTIN DETAIL
Scale: 3"=1'-0"



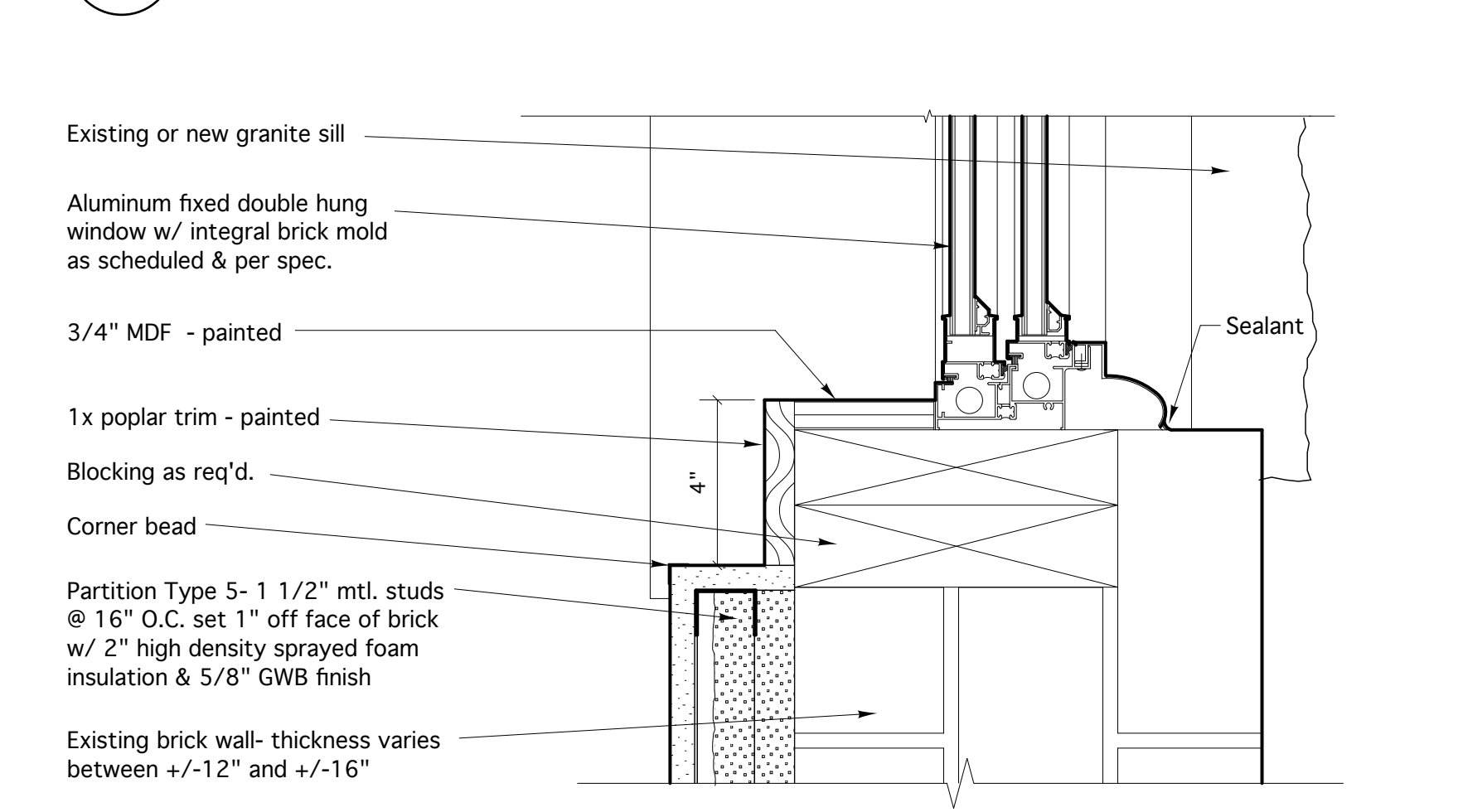
4 JAMB CONDITION @ Above 48" A.F.F. for floors 2,3,4,5
Scale: 3"=1'-0"



3 TYPICAL HEAD DETAIL @ BRICK ARCH for floors 4,5
Scale: 3"=1'-0"

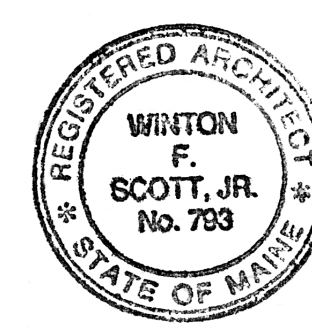


2 TYPICAL SILL DETAIL for floors 2,3,4,5
Scale: 3"=1'-0"



1 JAMB CONDITION @ Below 48" A.F.F. for floors 2,3,4,5
Scale: 3"=1'-0"

PERMIT SET - NOT FOR CONSTRUCTION



Blais Civil Engineers, PA
780 Broadway
South Portland, ME 04106
T. 207.767.7300
sblaise@blaisece.com

Bartlett Design
942 Washington Street
Bath, ME 04530
T. 207.443.5447 F. 207.443.5560
bartdes@blazenet.net

Mechanical Systems Engineers
Royal River Center, Unit #10
10 Forest Falls Drive, Yarmouth, ME 04096
T. 207.846.1441 F. 207.846.1443

Carroll Associates Landscape Architects
217 Commercial Street, Suite 200
Portland, ME 04101
T. 207.772.1552 F. 207.0712

Becker Structural Engineers, Inc.
75 York Street, Portland, ME 04101
T. 207.879.1838 F. 207.879.1822
www.beckerstructural.com

Winton Scott Architects, PA
5 Milk Street, Portland, ME 04101
207.774.4811 www.wintonscott.com

REV #	DATE	DESCRIPTION

Renovations To:
CUMBERLAND COLD STORAGE BUILDING
Merrill's Wharf, Portland, Maine

WINDOW DETAILS

A4.5