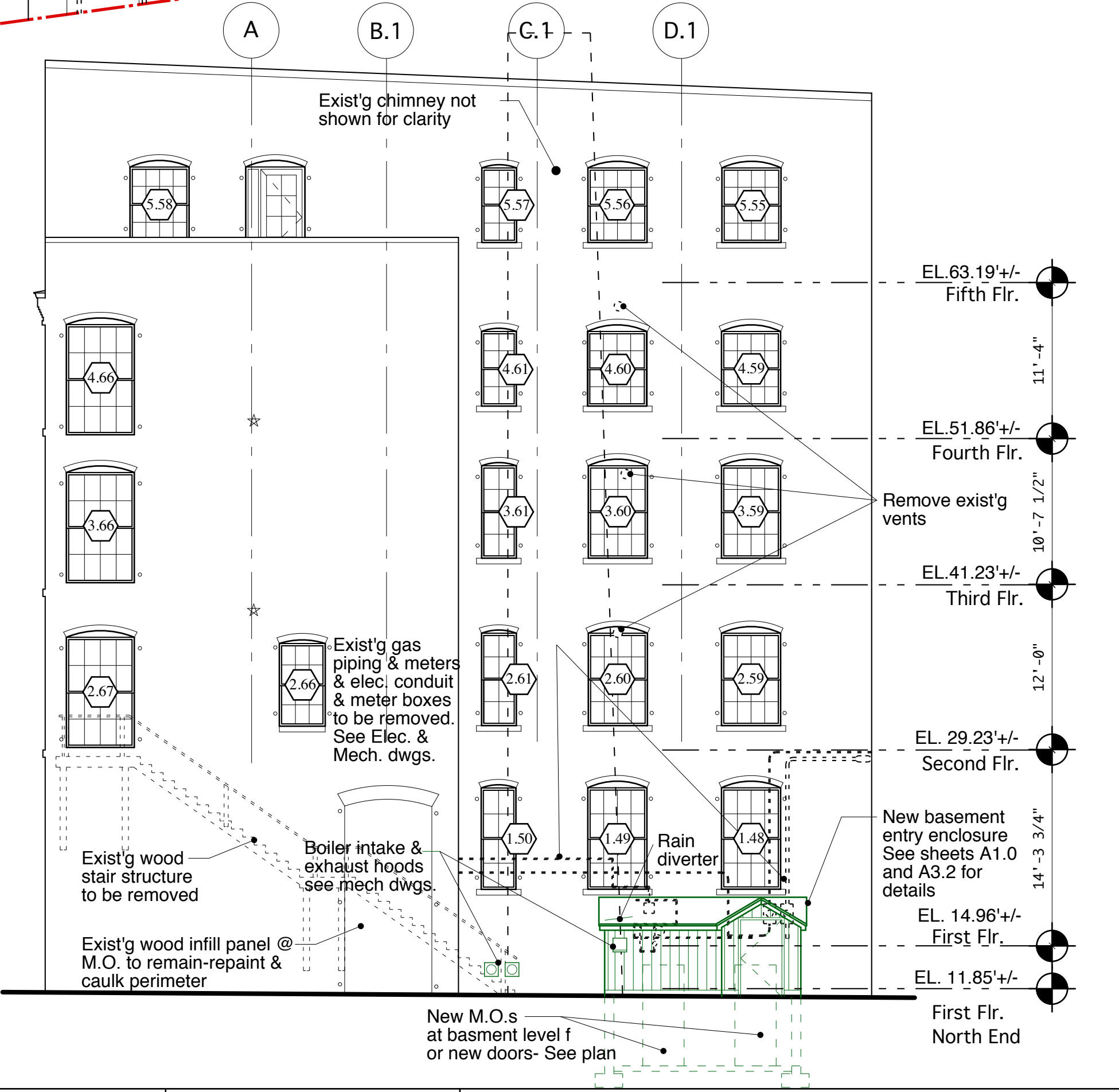


EAST ELEVATION

1/8" = 1'-0"

GENERAL NOTES:

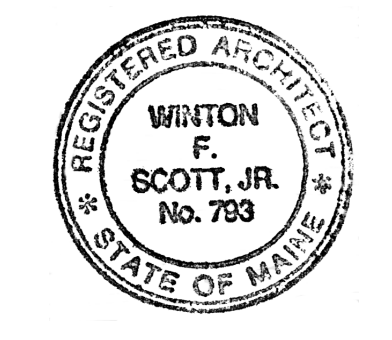
1. See Facade Restoration Drawings prepared by Becker Structural Engineers, Inc. for extent of masonry restoration work.
2. See Electrical Drawings for building mounted light fixtures



NORTH ELEVATION

1/8" = 1'-0"

PERMIT SET - NOT FOR CONSTRUCTION



Blais Civil Engineers, PA
780 Broadway
South Portland, ME 04106
T. 207.767.7300
slaise@blaisece.com

Bartlett Design
942 Washington Street
Bath, ME 04530
T. 207.443.5447 F. 207.443.5560
bartdes@blazenetme.net

Mechanical Systems Engineers

Royal River Center, Unit #10
10 Forest Falls Drive, Yarmouth, ME 04096
T. 207.846.1441 F. 207.846.1443

Carroll Associates Landscape Architects

217 Commercial Street, Suite 200
Portland, ME 04101
T. 207.772.1552 F. 207.0712

Becker Structural Engineers, Inc.

75 York Street, Portland, ME 04101
T. 207.879.1838 F. 207.879.1822
www.beckerstructural.com

Winton Scott Architects, PA

5 Milk Street, Portland, ME 04101
207.774.4811 www.wintonscott.com

| REV # | DATE | DESCRIPTION |
|-------|------|-------------|
| | | |
| | | |
| | | |
| | | |
| | | |
| | | |
| | | |
| | | |
| | | |
| | | |

Renovations To:
CUMBERLAND COLD STORAGE BUILDING
Merrill's Wharf, Portland, Maine

BUILDING ELEVATIONS
A2.2
9.23.2010