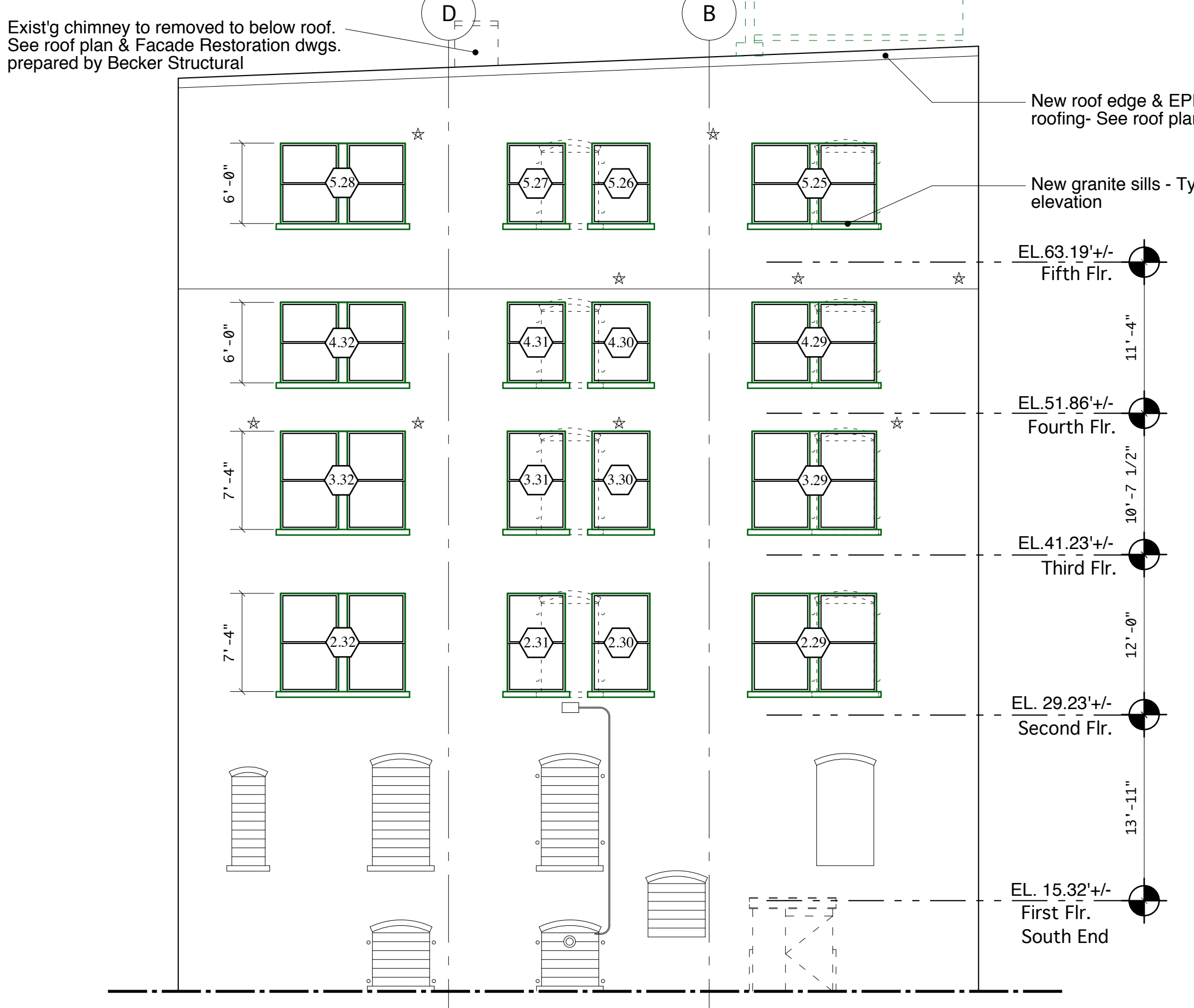


WEST ELEVATION

1/8" = 1'-0"

GENERAL NOTES:

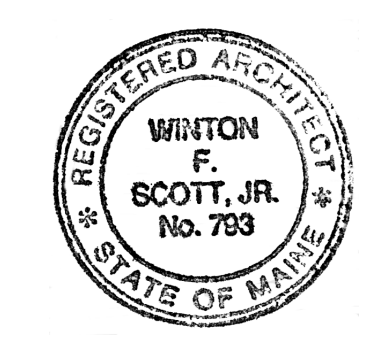
1. See Facade Restoration Drawings prepared by Becker Structural Engineers, Inc. for extent of masonry restoration work.
2. See Electrical Drawings for building mounted light fixtures



SOUTH ELEVATION

1/8" = 1'-0"

PERMIT SET - NOT FOR CONSTRUCTION



Blais Civil Engineers, PA
 780 Broadway
 South Portland, ME 04106
 T. 207.767.7300
 sblaise@blaisece.com

Bartlett Design
 942 Washington Street
 Bath, ME 04530
 T. 207.443.5447 F. 207.443.5560
 bartdes@blazenetme.net

Mechanical Systems Engineers
 Royal River Center, Unit #10
 10 Forest Falls Drive, Yarmouth, ME 04096
 T. 207.846.1441 F. 207.846.1443

Carroll Associates Landscape Architects
 217 Commercial Street, Suite 200
 Portland, ME 04101
 T. 207.772.1552 F. 207.0712

Becker Structural Engineers, Inc.
 75 York Street, Portland, ME 04101
 T. 207.879.1838 F. 207.879.1822
 www.beckerstructural.com

Winton Scott Architects, PA
 5 Milk Street, Portland, ME 04101
 207.774.4811 www.wintonscott.com

REV #	DATE	DESCRIPTION

Renovations To:
CUMBERLAND COLD STORAGE BUILDING
 Merrill's Wharf, Portland, Maine

BUILDING ELEVATIONS
A2.1
 9.23.2010