

**LEGEND**

- FIRE EXIT STAIR SERVING FIRST FLOOR TENANTS ONLY
- FIRE EXIT STAIR
- 2 HR. RATED PARTITION
- 1 HR. RATED PARTITION
- DEAD END CORRIDOR (50' MAX ALLOWED)
- COMMON PATH TO EXIT (100' MAX ALLOWED)
- PRIMARY EXIT PATH
- FIRE EXTINGUISHER LOCATION (REQUIRED EVERY 75' & AT STAIRS)
- EXIT SIGN
- E.L. EMERGENCY LIGHT

**1ST FLOOR  
CODE PLAN**

**CODE PLAN NOTES:**

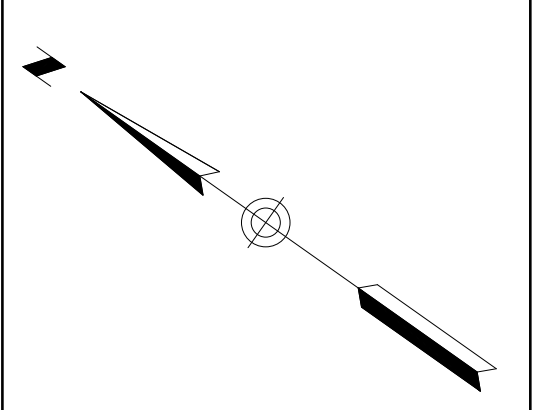
THE MAIN ELEVATOR LOBBY AND PRIMARY EXIT STAIRS (HIGHLIGHTED IN YELLOW) ARE SERVICING THE UPPER FLOORS ONLY. THE BALANCE OF THE FIRST FLOOR LEVEL WILL BE DIVIDED INTO INDIVIDUAL TENANT SPACES WITH INDEPENDENT EXITING COMPONENTS.

BECAUSE OF THE VARIETY OF FLOOR ELEVATIONS AT THE FIRST FLOOR AND BECAUSE SPECIFIC TENANTS RE NOT YET KNOWN, THE LAYOUT AND EXITING FOR THESE SPACES IS SUBJECT TO CHANGE. FOR THE PURPOSE OF THIS PLAN, A POSSIBLE LAYOUT FOR THE TENANT SPACES HAS BEEN ASSUMED TO ILLUSTRATE HOW EXITING COULD BE HANDLED.

ONCE SPECIFIC PROPOSED LAYOUTS CAN BE DETERMINED, THE OWNER WILL SUBMIT FINAL DRAWINGS FOR REVIEW.

CODE PLAN PREPARED BY:

**Winton Scott Architects**  
 5 Milk Street, Portland, ME 04101  
 207.774.4811 www.wintonscott.com



**Blais Civil Engineers, PA**  
 780 Broadway  
 South Portland, ME 04106  
 T. 207.767.7300  
 sblaise@blaisece.com

**Bartlett Design**  
 942 Washington Street  
 Bath, ME 04530  
 T. 207.443.5447 F. 207.443.5560  
 bartdes@blazenetme.net

**Mechanical Systems Engineers**  
 Royal River Center, Unit #10  
 10 Forest Falls Drive, Yarmouth, ME 04096  
 T. 207.846.1441 F. 207.846.1443

**Carroll Associates Landscape Architects**  
 217 Commercial Street, Suite 200  
 Portland, ME 04101  
 T. 207.772.1552 F. 207.0712

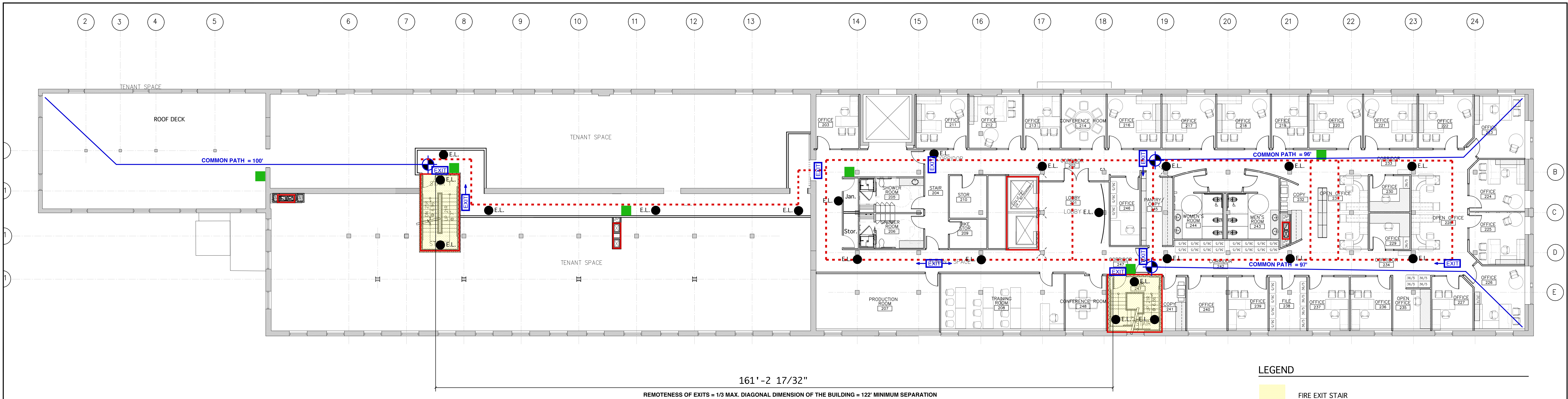
**Becker Structural Engineers, Inc.**  
 75 York Street, Portland, ME 04101  
 T. 207.879.1838 F. 207.879.1822  
 www.beckerstructural.com

**Winton Scott Architects, PA**  
 5 Milk Street, Portland, ME 04101  
 207.774.4811 www.wintonscott.com

REV #	DATE	DESCRIPTION

Renovations To:  
**CUMBERLAND COLD STORAGE BUILDING**  
 Merrill's Wharf, Portland, Maine

FIRST FLOOR PLAN  
**A1.1**  
 9.23.2010



161' - 2 17/32"

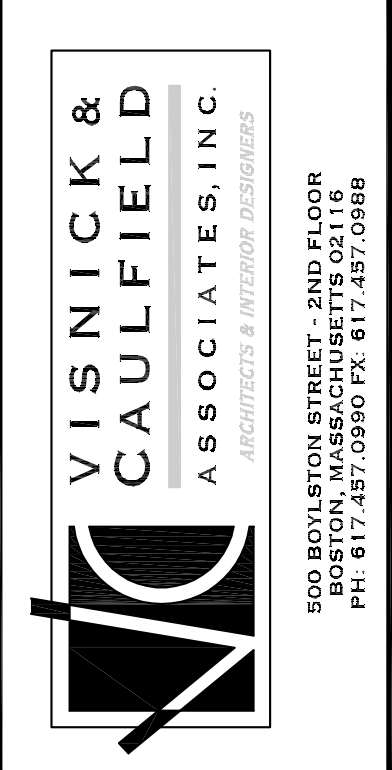
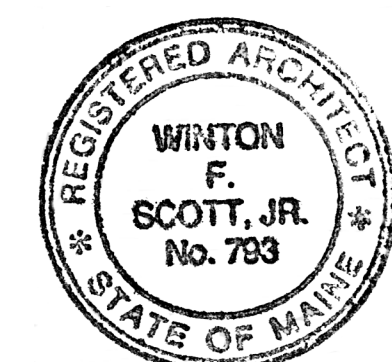
REMOVEDNESS OF EXITS = 1/3 MAX. DIAGONAL DIMENSION OF THE BUILDING = 122' MINIMUM SEPARATION

**LEGEND**

- FIRE EXIT STAIR
- 2 HR. RATED PARTITION
- DEAD END CORRIDOR (50' MAX ALLOWED)
- COMMON PATH TO EXIT (100' MAX ALLOWED)
- PRIMARY EXIT PATH
- FIRE EXTINGUISHER LOCATION (REQUIRED EVERY 75' & AT STAIRS)
- EXIT SIGN
- E.L. EMERGENCY LIGHT

CODE PLAN PREPARED BY:

**Winton Scott Architects**  
 5 Milk Street, Portland, ME 04101  
 207.774.4811 www.wintonscott.com

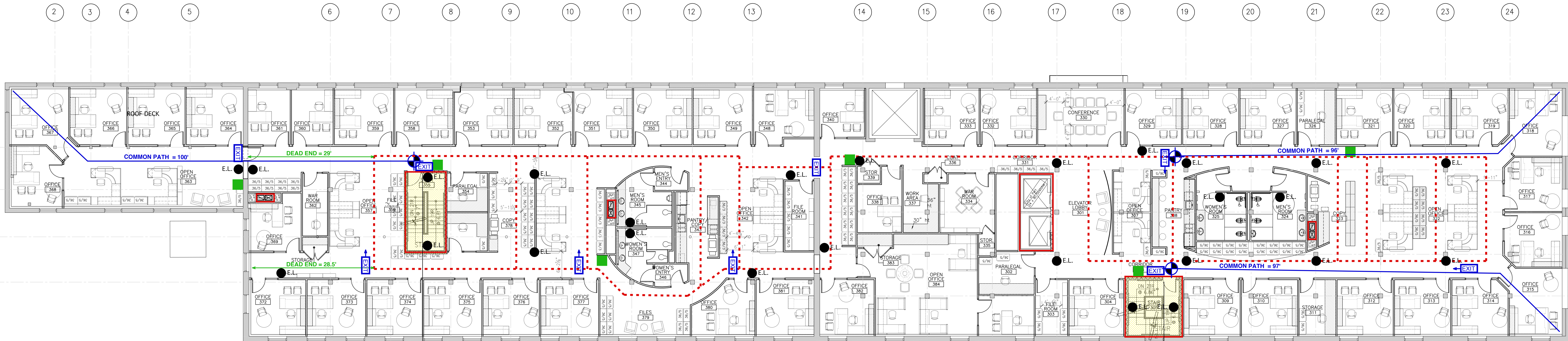


PROJECT  
**PIERCE ATWOOD**  
 WATERFRONT  
 PORTLAND, MAINE

NO.	DATE	REVISION

TITLE  
**2ND FLOOR  
 CODE PLAN**  
 SCALE: 1/8"=1'-0"  
 DATE: 07.27.10  
 PROJECT NO.: 2010.053  
 DRWN AD  
 CHK SN

DRAWING NO.  
**A-1.2**



168'-6 23/32"

REMOVEDNESS OF EXITS = 1/3 MAX. DIAGONAL DIMENSION OF THE BUILDING = 122' MINIMUM SEPARATION

**LEGEND**

- FIRE EXIT STAIR
- 2 HR. RATED PARTITION
- DEAD END CORRIDOR (50' MAX ALLOWED)
- COMMON PATH TO EXIT (100' MAX ALLOWED)
- PRIMARY EXIT PATH
- FIRE EXTINGUISHER LOCATION (REQUIRED EVERY 75' & AT STAIRS)
- EXIT EXIT SIGN
- E.L. EMERGENCY LIGHT



PROJECT  
**PIERCE ATWOOD**  
 WATERFRONT  
 PORTLAND, MAINE

NO.	DATE	REVISION

TITLE  
**3RD FLOOR  
 CODE PLAN**

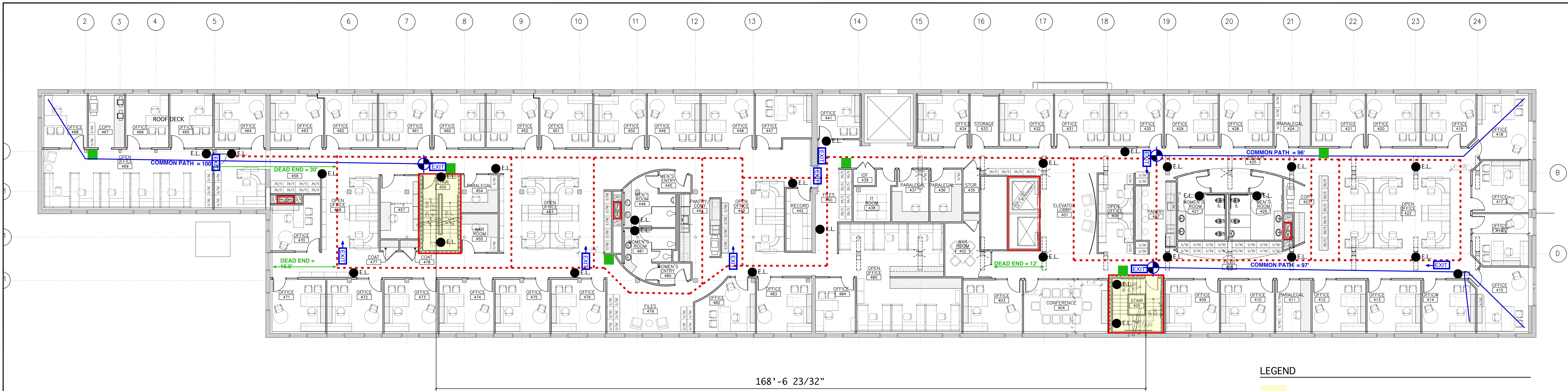
SCALE 1/8"=1'-0"  
 DATE 07.27.10

PROJECT NO. 2010.053  
 DRAWN BY AD  
 CHK BY SA

DRAWING NO.  
**A-1.3**

CODE PLAN PREPARED BY:

**Winton Scott Architects**  
 5 Milk Street, Portland, ME 04101  
 207.774.4811 www.wintonsscott.com



168'-6 23/32"

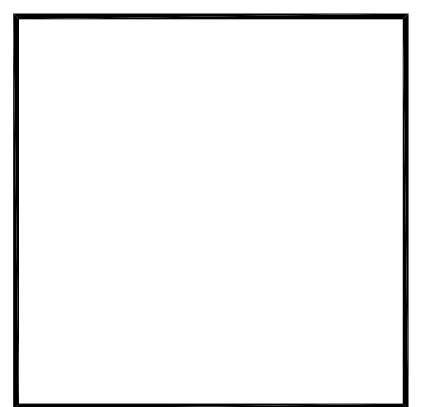
REMOVEDNESS OF EXITS = 1/3 MAX. DIAGONAL DIMENSION OF THE BUILDING = 122' MINIMUM SEPARATION

**LEGEND**

- FIRE EXIT STAIR
- 2 HR. RATED PARTITION
- DEAD END CORRIDOR (50' MAX ALLOWED)
- COMMON PATH TO EXIT (100' MAX ALLOWED)
- PRIMARY EXIT PATH
- FIRE EXTINGUISHER LOCATION (REQUIRED EVERY 75' & AT STAIRS)
- EXIT SIGN
- E.L. EMERGENCY LIGHT

CODE PLAN PREPARED BY:

**Winton Scott Architects**  
 5 Milk Street, Portland, ME 04101  
 207.774.4811 www.wintonsscott.com



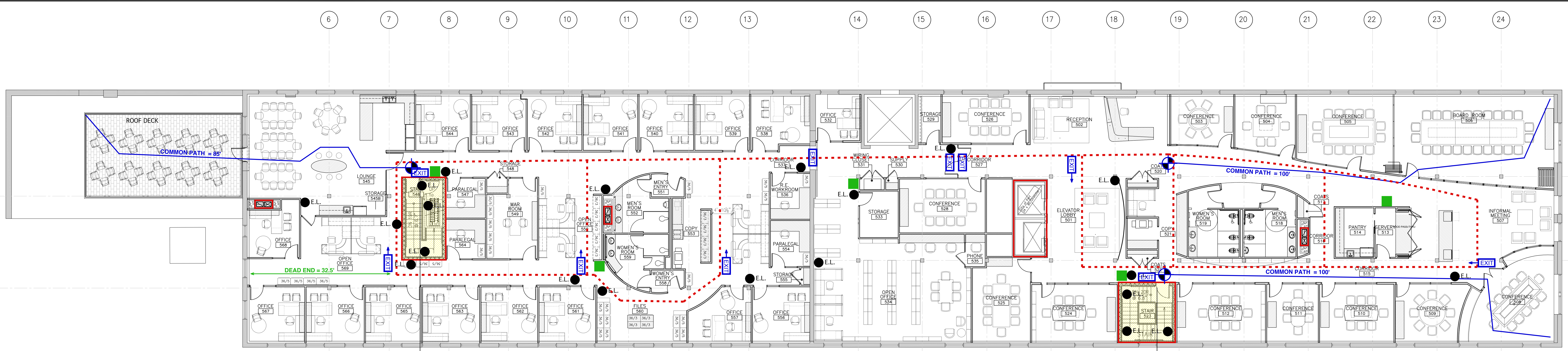
**VISNICK & CAULFIELD ASSOCIATES, INC.**  
 ASSOCIATES & AFFILIATE ORGANIZATIONS  
 500 ROYALTON STREET - 2ND FLOOR  
 PORTLAND, MAINE 04101  
 TEL: 207.774.4811 FAX: 207.774.4814

PROJECT  
**PIERCE ATWOOD**  
 WATERFRONT  
 PORTLAND, MAINE

NO.	DATE	REVISION

TITLE  
**4TH FLOOR CODE PLAN**  
 SCALE 1/8"=1'-0"  
 DATE 07.27.10  
 PROJECT NO. 2010.053  
 DRAWN AD CHK SN

DRAWING NO.  
**A-1.4**



168'-6 23/32"

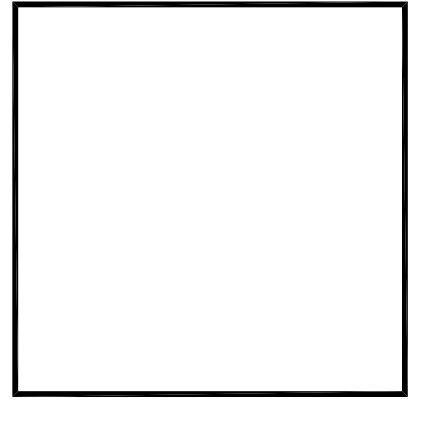
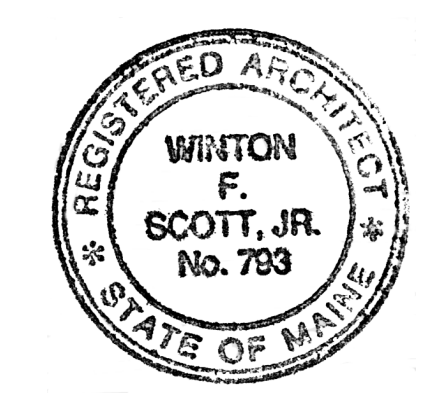
REMOVEDNESS OF EXITS = 1/3 MAX. DIAGONAL DIMENSION OF THE BUILDING = 122' MINIMUM SEPARATION

**LEGEND**

- FIRE EXIT STAIR
- 2 HR. RATED PARTITION
- DEAD END CORRIDOR (50' MAX ALLOWED)
- COMMON PATH TO EXIT (100' MAX ALLOWED)
- PRIMARY EXIT PATH
- FIRE EXTINGUISHER LOCATION (REQUIRED EVERY 75' & AT STAIRS)
- EXIT SIGN
- E.L. EMERGENCY LIGHT

CODE PLAN PREPARED BY:

**Winton Scott Architects**  
 5 Milk Street, Portland, ME 04101  
 207.774.4811 www.wintonsscott.com



**VISONICK & CAULFIELD ASSOCIATES, INC.**  
 ARCHITECTS & INTERIOR DESIGNERS  
 800 BOSTON STREET - 2ND FLOOR  
 BOSTON, MASSACHUSETTS 02118  
 TEL: 617.552.6100 FAX: 617.552.6101

PROJECT  
**PIERCE ATWOOD**  
 WATERFRONT  
 PORTLAND, MAINE

NO.	DATE	REVISION

TITLE  
**5TH FLOOR CODE PLAN**  
 SCALE 1/8"=1'-0"  
 DATE 07.27.10  
 PROJECT NO. 2010.053  
 DRAWN BY  
 CHK BY

DRAWING NO.  
**A-1.5**