

10

11

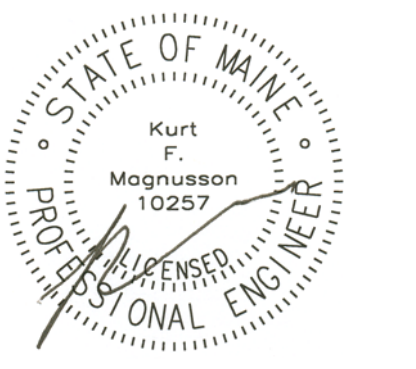
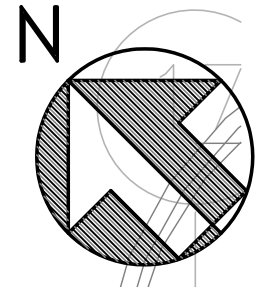
12

13

14

15

16



MERRILL'S WHARF First & Second Floor Fit Up Project

254 Commercial Street, Portland, Maine

Winton Scott Architects
5 Milk St. Portland, ME 04101
207.774.6680 | wintonscott.com

Mechanical Systems Engineers
Royal River Center #10
10 Forest Falls Drive, Yarmouth, ME 04096
207.846.1441
Facebook: Mechanical Systems Engineers

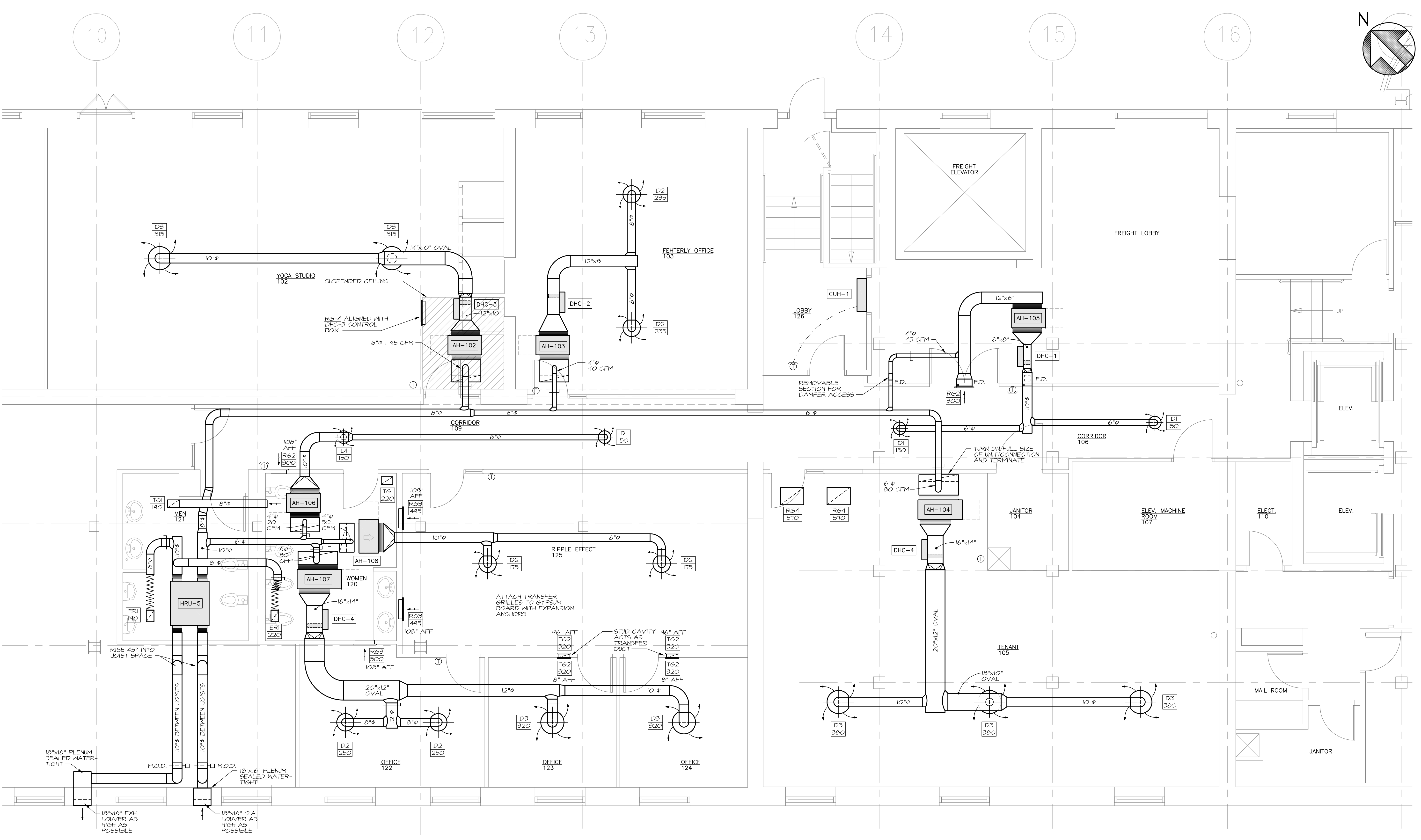
Bartlett Design
942 Washington St., Bath, ME 04530
207.443.5447 | bartlettdesigninc@comcast.net

SCALE: 1/4" = 1'-0"

FIRST FLOOR MECHANICAL DUCTWORK PLAN

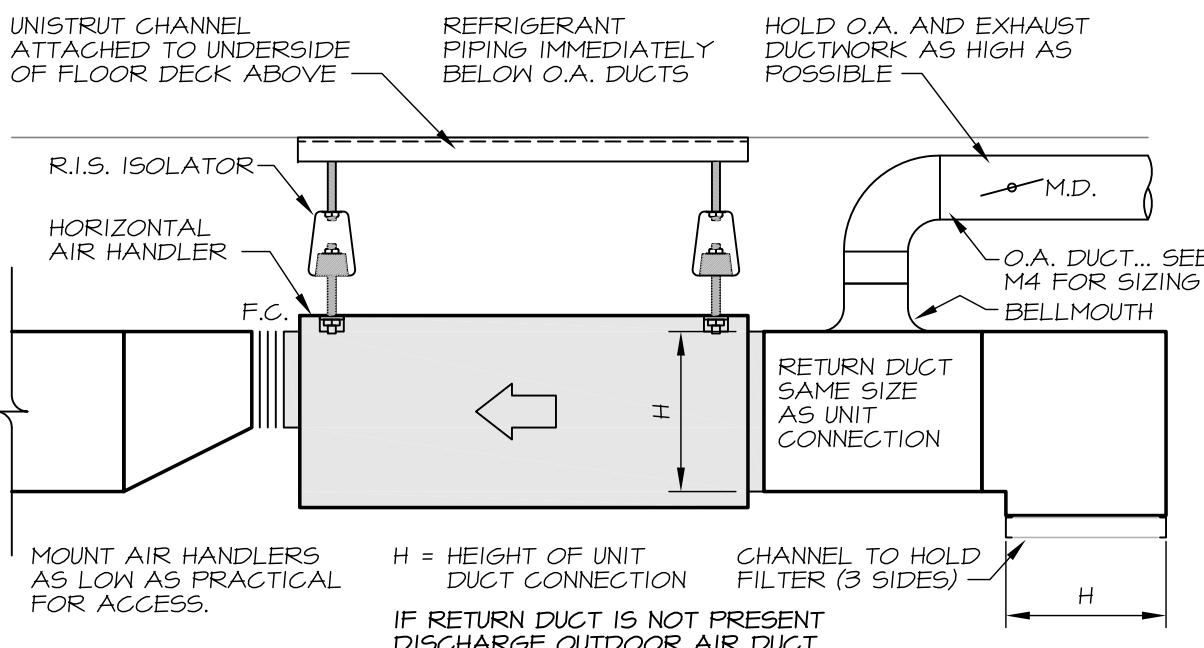
M1

DECEMBER 21, 2011



1 FIRST FLOOR DUCTWORK PLAN

SCALE: 1/4" = 1'-0"



2 AIR HANDLER MOUNTING

NO SCALE



MECHANICAL SYSTEMS ENGINEERS
ROYAL RIVER CENTER, UNIT #10
10 FOREST FALLS DRIVE
YARMOUTH, MAINE 04096
(207) 846-1441
© COPYRIGHT 2011 M.S.E. Proj. 1150

December 20, 2011 - 11:24 am
\\Merfies\Projects\1150 Merrill Wharf Floors 1 and 2\Drawings\1150 M1-M2.dwg