

MERRILL'S WHARF
First & Second Floor Fit Up Project
 254 Commercial Street, Portland, Maine

Winton Scott Architects
 5 Milk St. Portland, ME 04101
 207.774.6680 | wintonsscott.com

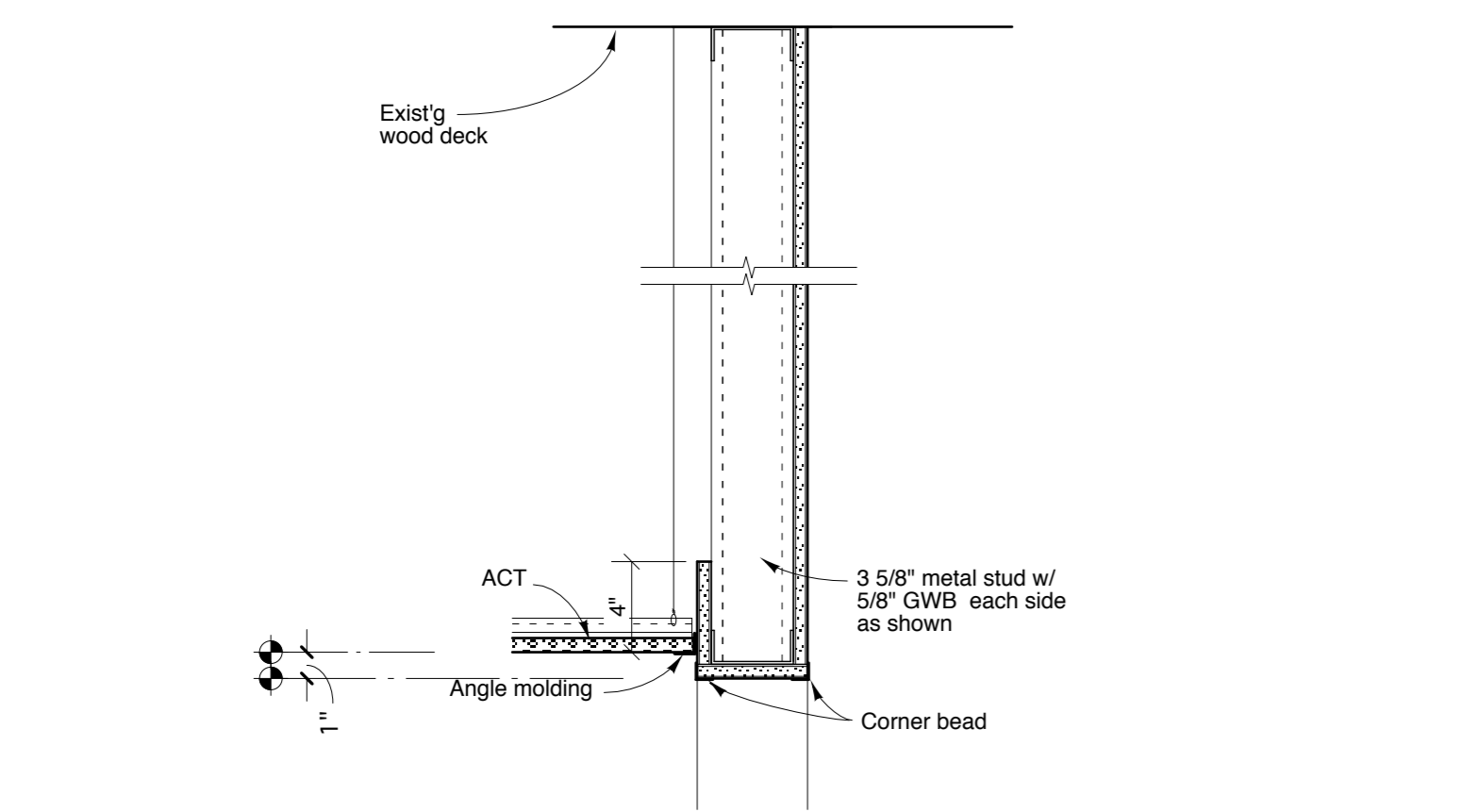
Mechanical Systems Engineers
 Royal River Center #10
 10 Forest Falls Dr., Yarmouth, ME 04096
 207.846.1441 |

Bartlett Design
 942 Washington St., Bath, ME 04530
 207.443.5447 | bartlettdesigninc@comcast.net>

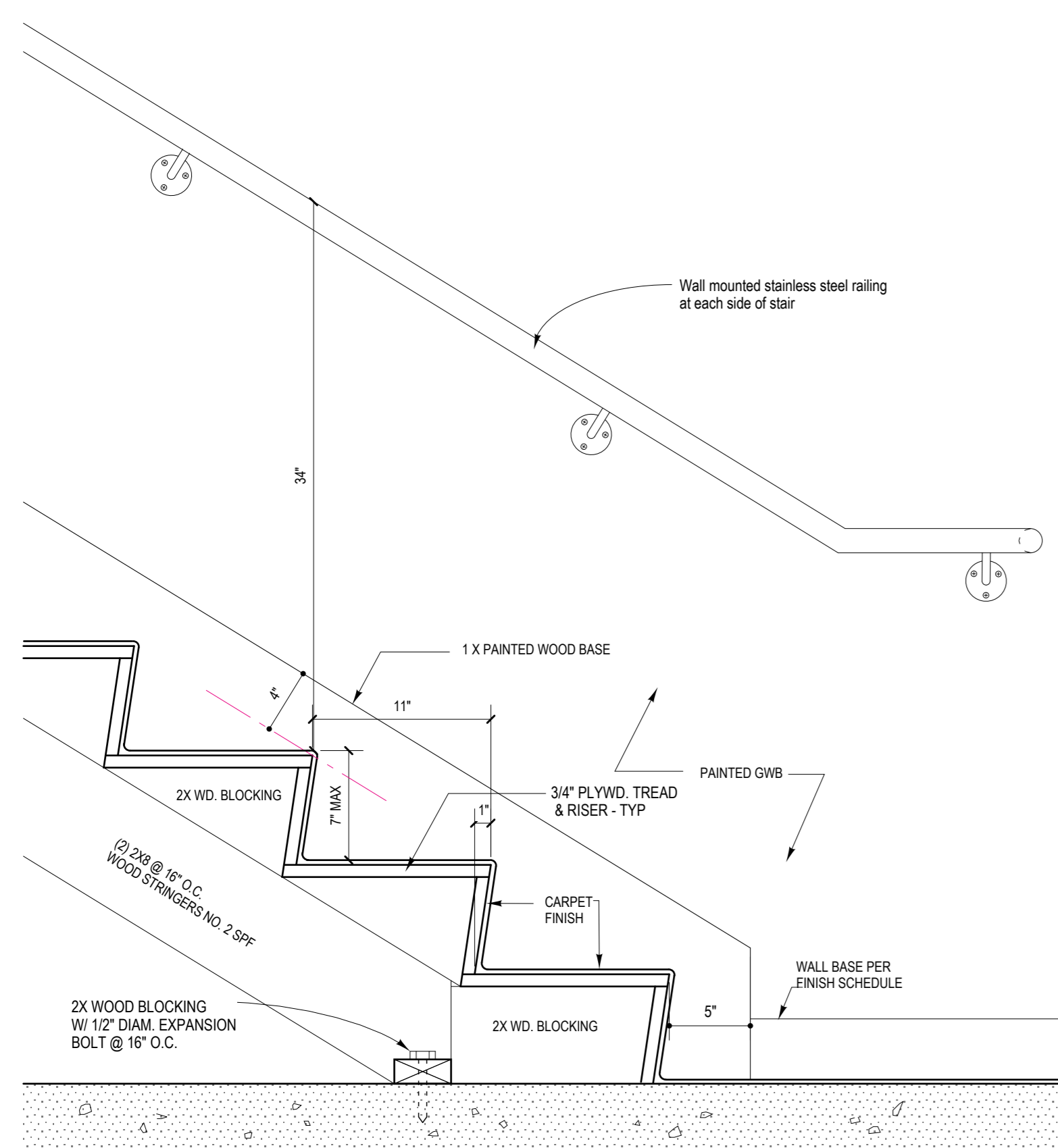
SCALE: AS NOTED

DETAILS

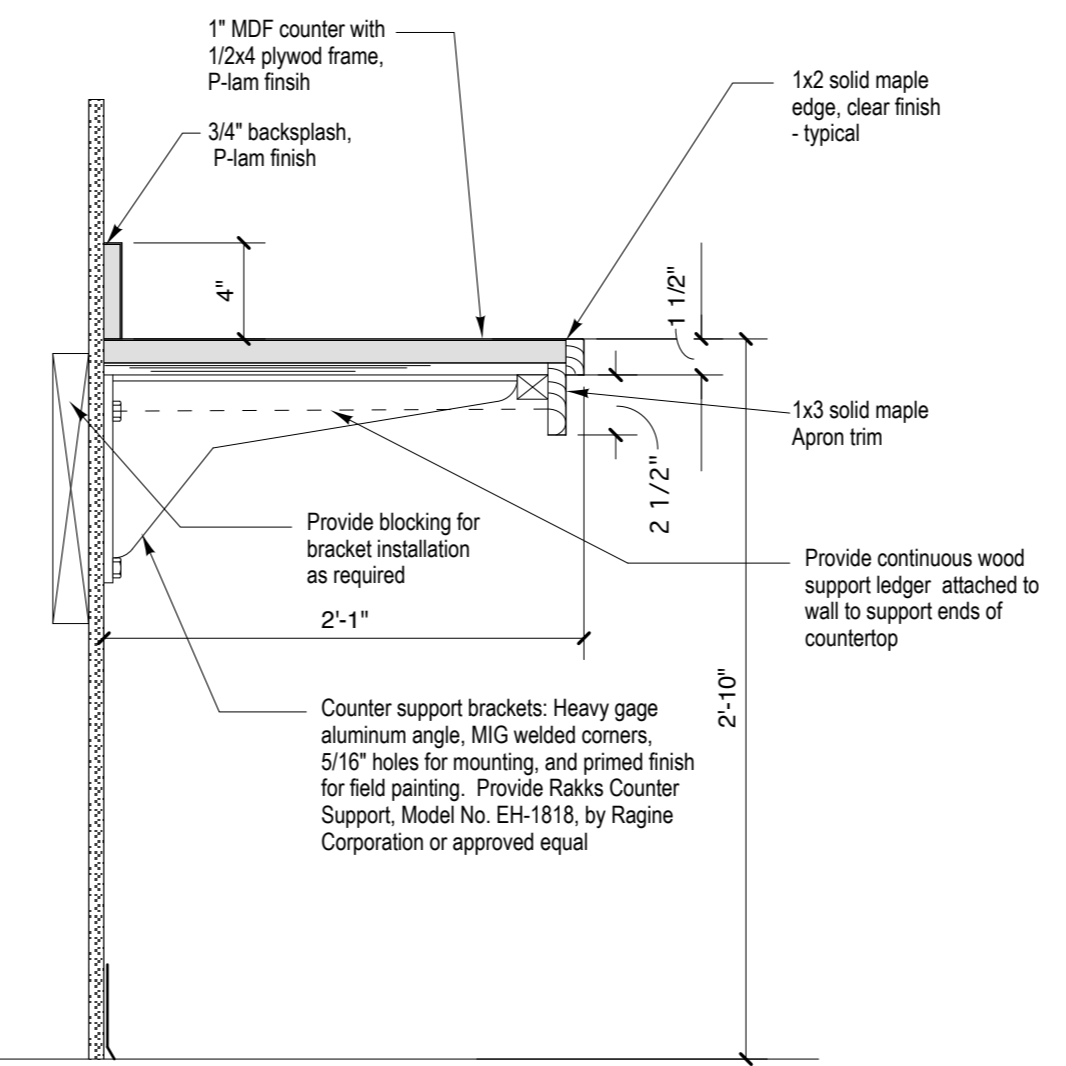
A3.1



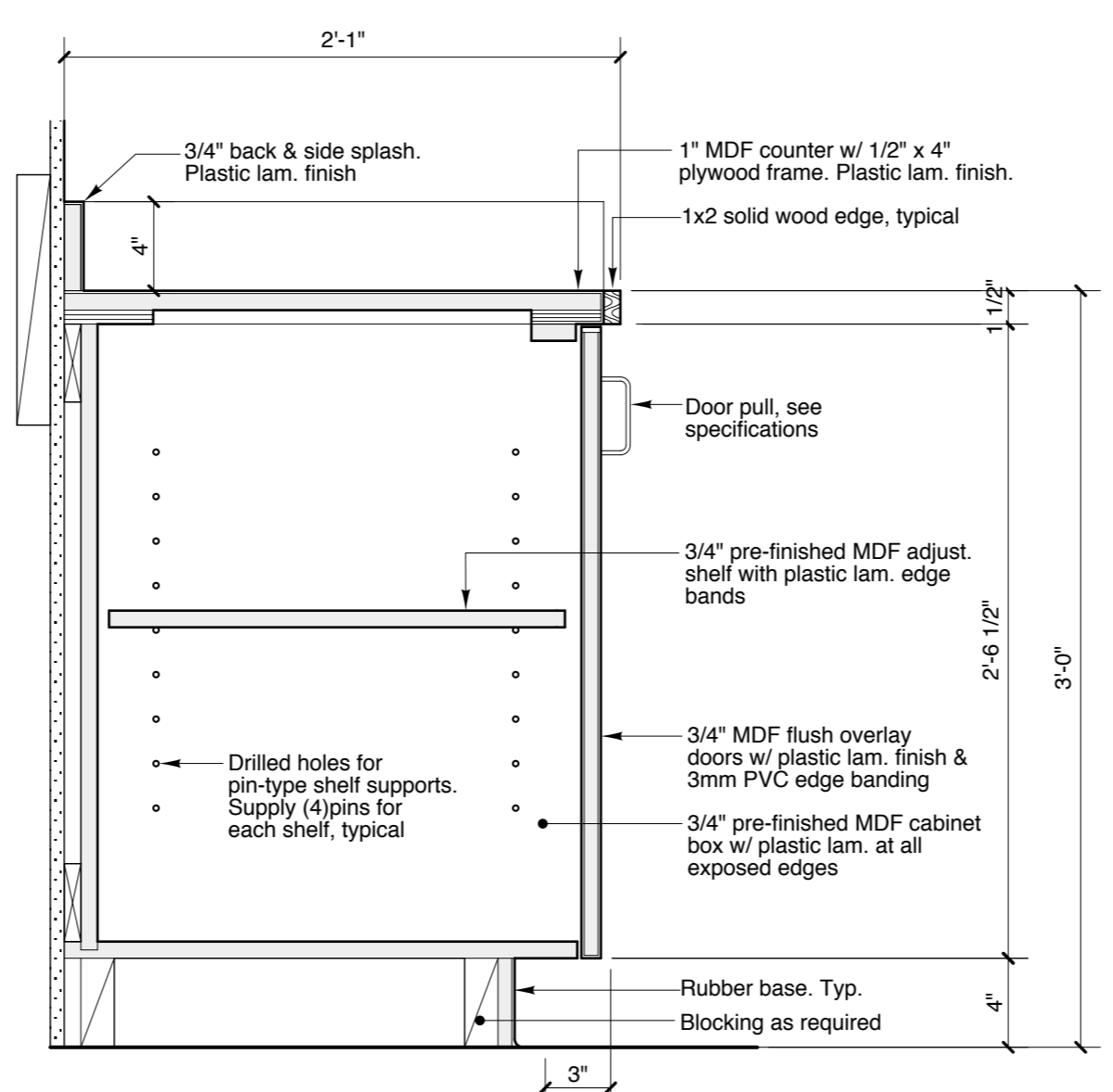
7 TYPICAL SOFFIT DETAIL
 1 1/2" = 1'-0"



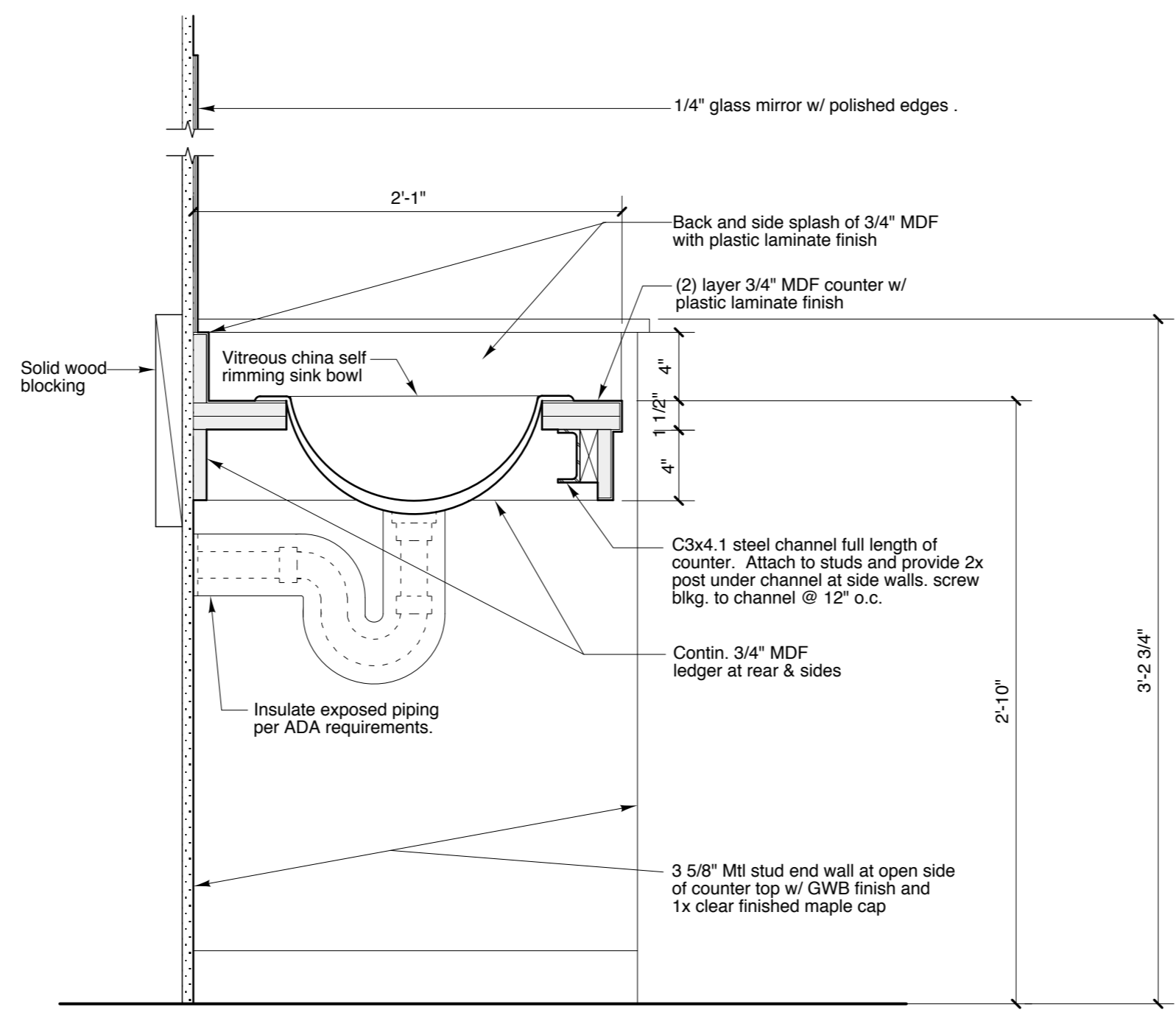
1 STAIR 2 - Section Detail
 1 1/2" = 1'-0"



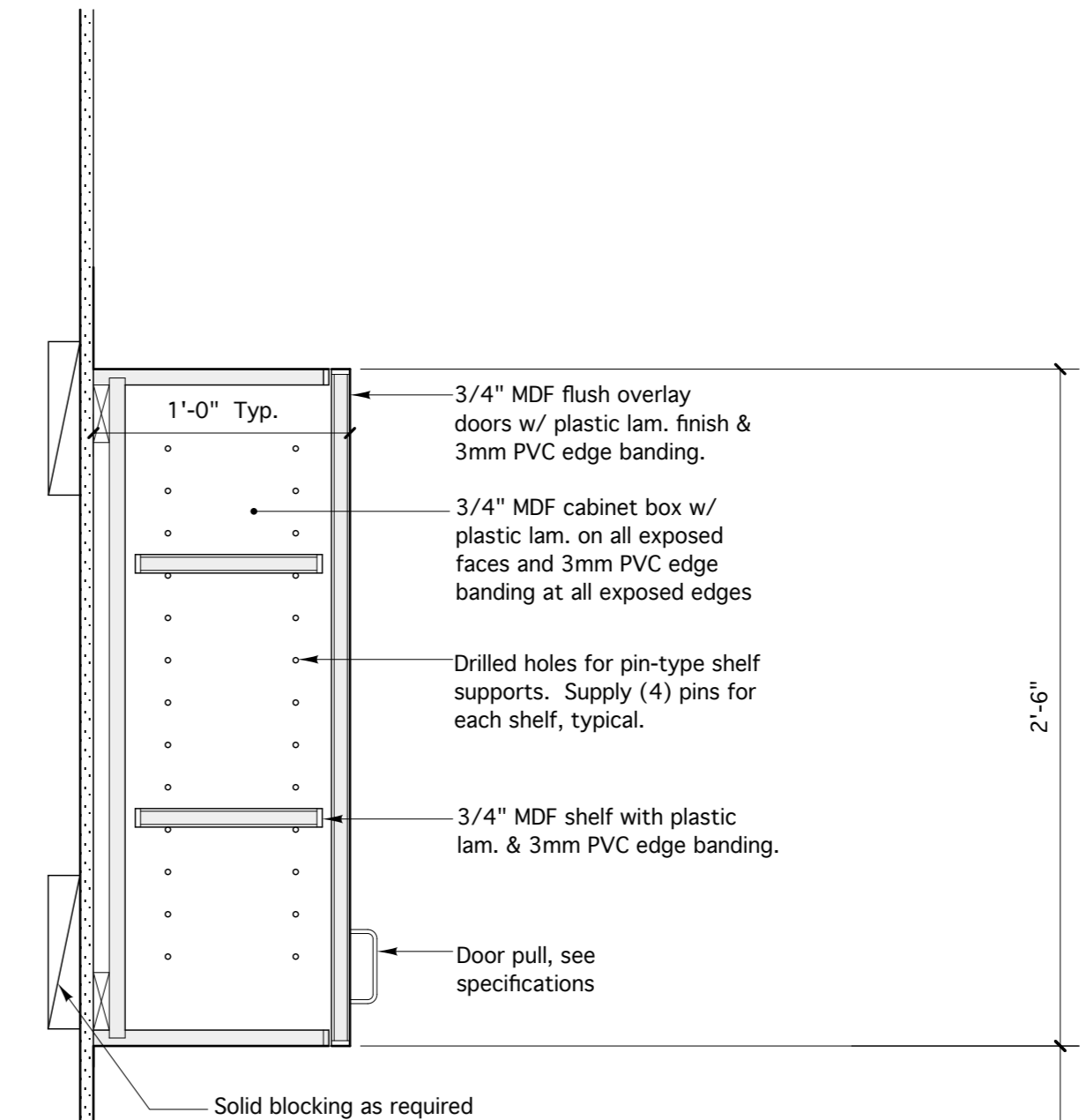
6 PRINTER AREA - Counter Section Detail
 1 1/2" = 1'-0"



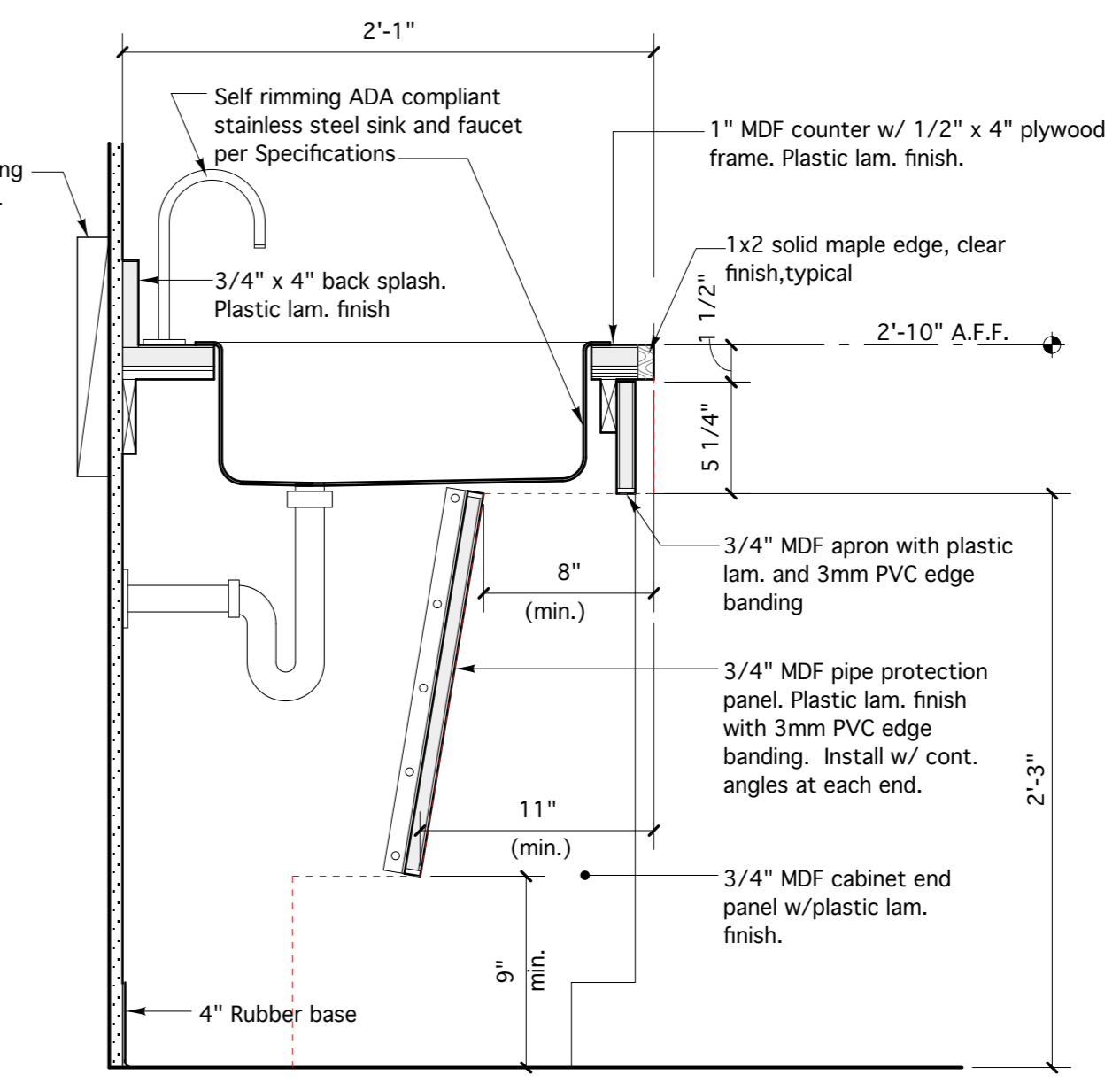
5 CONFERENCE ROOM - Counter Section Detail
 1 1/2" = 1'-0"



2 TOILET ROOM - Counter Section Detail
 1 1/2" = 1'-0"



4 KITCHEN - Counter Section Detail
 1 1/2" = 1'-0"



3 KITCHEN - Counter Section Detail @ Sink
 1 1/2" = 1'-0"