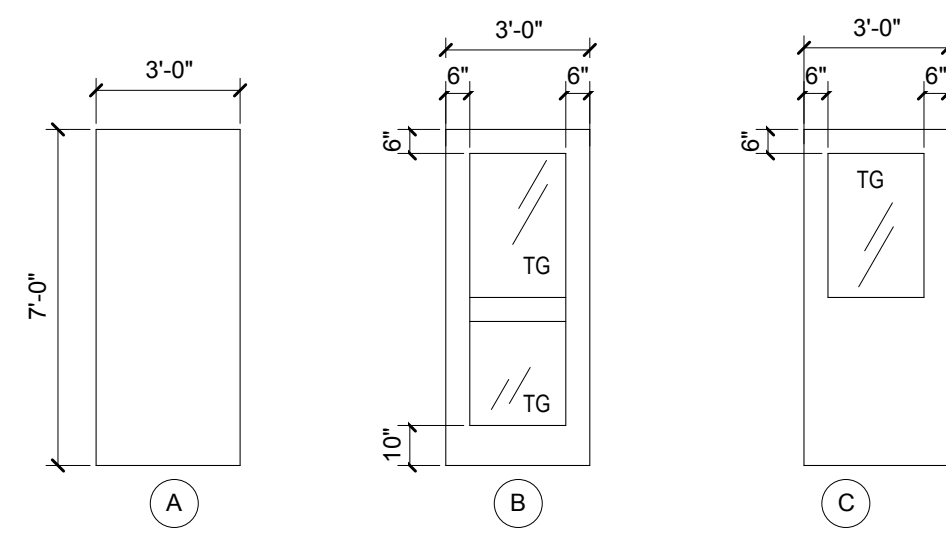


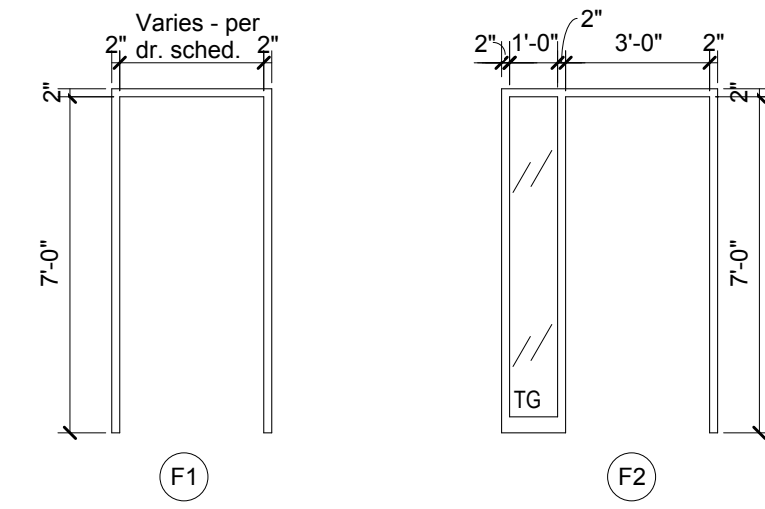
DOOR & FRAME SCHEDULE

General			Door			Frame			Details					Remarks	
Door No.	Size (W x H)	Thickness	Material	Finish	Type	Material	Finish	Type	Head	Jamb	Threshold	Hardware	Label		
SECOND FLOOR															
108	PR 3'-0" X 7'-0"	1 3/4"	SCWD	Clr. F.	B	HM	Ptd	F1	H1	J1	-	-	-	-	-
105	3'-0" X 7'-0"	1 3/4"	SCWD	Clr. F.	B	HM	Ptd	F2	H1	J1	-	-	-	-	-
103	3'-0" X 7'-0"	1 3/4"	SCWD	Clr. F.	B	HM	Ptd	F2	H1	J1	-	-	-	-	-
102	3'-0" X 7'-0"	1 3/4"	SCWD	Clr. F.	B	HM	Ptd	F2	H1	J1	T2	-	-	-	-
109	3'-0" X 7'-0"	1 3/4"	SCWD	Clr. F.	B	HM	Ptd	F2	H1	J1	-	-	-	-	-
121	3'-0" X 7'-0"	1 3/4"	SCWD	Clr. F.	A	HM	Ptd	F1	H1	J1	T1	-	-	-	1" Undercut
120	3'-0" X 7'-0"	1 3/4"	SCWD	Clr. F.	A	HM	Ptd	F1	H1	J1	T1	-	-	-	1" Undercut
125	3'-0" X 7'-0"	1 3/4"	SCWD	Clr. F.	B	HM	Ptd	F2	H1	J1	-	-	-	-	-
122	3'-0" X 7'-0"	1 3/4"	SCWD	Clr. F.	B	HM	Ptd	F1	H1	J1	-	-	-	-	-
123	2'-0" X 7'-0"	1 3/4"	SCWD	Clr. F.	B	HM	Ptd	F1	H1	J1	-	-	-	-	-
124	3'-0" X 7'-0"	1 3/4"	SCWD	Clr. F.	B	HM	Ptd	F1	H1	J1	-	-	-	-	-
257.1	3'-0" X 7'-0"	1 3/4"	SCWD	Clr. F.	B	HM	Ptd	F2	H2	J2	-	-	-	-	in exist. partn. VIF
281	3'-0" X 7'-0"	1 3/4"	SCWD	Clr. F.	B	HM	Ptd	F1	H1	J1	-	-	-	-	-
280	3'-0" X 7'-0"	1 3/4"	SCWD	Clr. F.	B	HM	Ptd	F1	H1	J1	-	-	-	-	-
279	3'-0" X 7'-0"	1 3/4"	SCWD	Clr. F.	B	HM	Ptd	F1	H1	J1	-	-	-	-	-
278	3'-0" X 7'-0"	1 3/4"	SCWD	Clr. F.	B	HM	Ptd	F1	H1	J1	-	-	-	-	-
257.2	3'-0" X 7'-0"	1 3/4"	SCWD	Clr. F.	C	HM	Ptd	F1	H1	J1	-	-	-	-	-
255.1	3'-0" X 7'-0"	1 3/4"	SCWD	Clr. F.	C	HM	Ptd	F1	H2	J2	T3	-	-	-	in exist. partn. VIF
255.3	3'-0" X 7'-0"	1 3/4"	SCWD	Clr. F.	A	HM	Ptd	F1	H1	J1	-	-	-	-	-
274	3'-0" X 7'-0"	1 3/4"	SCWD	Clr. F.	A	HM	Ptd	F1	H1	J1	-	-	-	-	-
273	3'-0" X 7'-0"	1 3/4"	SCWD	Clr. F.	A	HM	Ptd	F1	H1	J1	-	-	-	-	-
272	3'-0" X 7'-0"	1 3/4"	SCWD	Clr. F.	B	HM	Ptd	F1	H1	J1	-	-	-	-	-
252	3'-0" X 7'-0"	1 3/4"	SCWD	Clr. F.	B	HM	Ptd	F1	H1	J1	-	-	-	-	-
276	3'-0" X 7'-0"	1 3/4"	SCWD	Clr. F.	B	HM	Ptd	F1	H1	J1	-	-	-	-	-
275	3'-0" X 7'-0"	1 3/4"	SCWD	Clr. F.	B	HM	Ptd	F1	H1	J1	-	-	-	-	-
255.2	3'-0" X 7'-0"	1 3/4"	SCWD	Clr. F.	C	HM	Ptd	F1	H2	J2	-	-	-	-	in exist. partn. VIF



DOOR TYPES (Clear finish Maple)

1/4" = 1'-0"

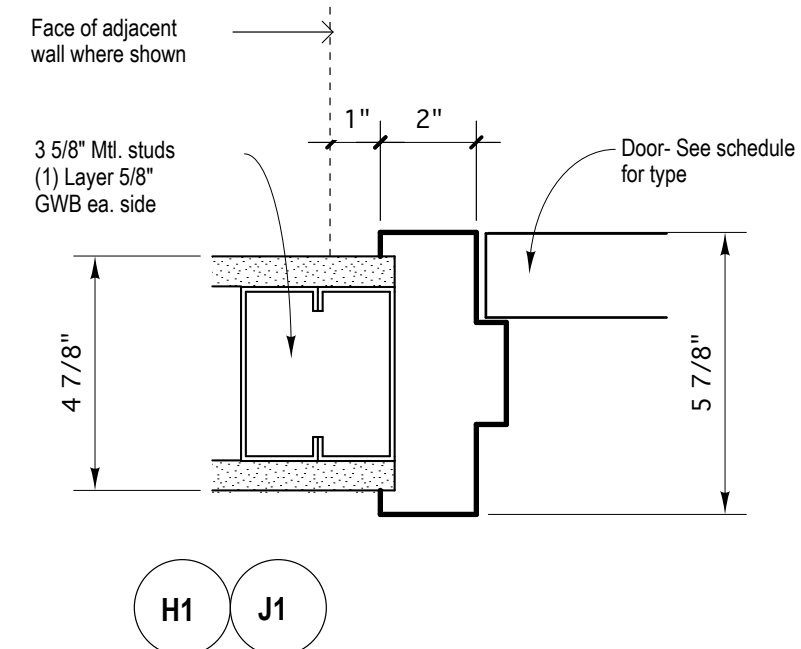


FRAME TYPES

1/4" = 1'-0"

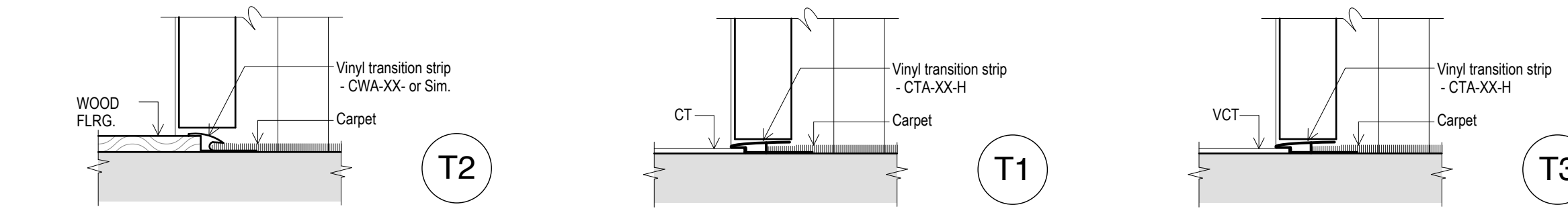
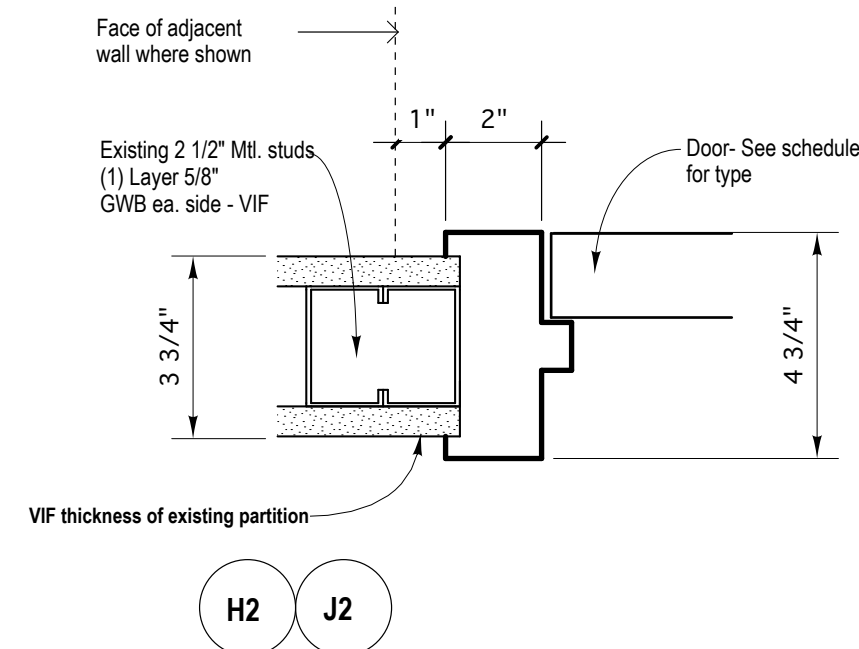
ABBREVIATIONS

SCWD	Solid Core wood door
Clr. F.	Clear Finish
HM	Hollow Metal
Ptd	Painted
HW	Hardware Set
TG	Tempered Glass



FRAME DETAILS

3" = 1'-0"

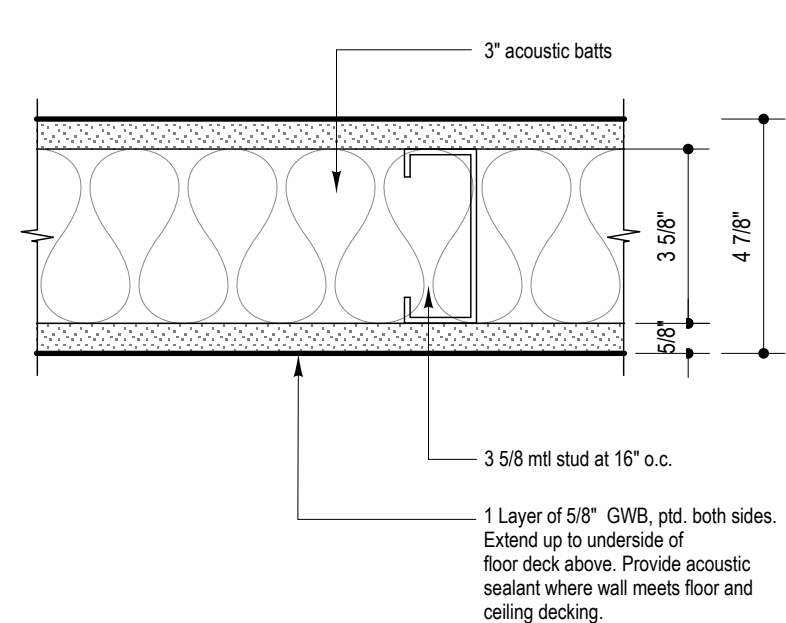


TRANSITION DETAILS

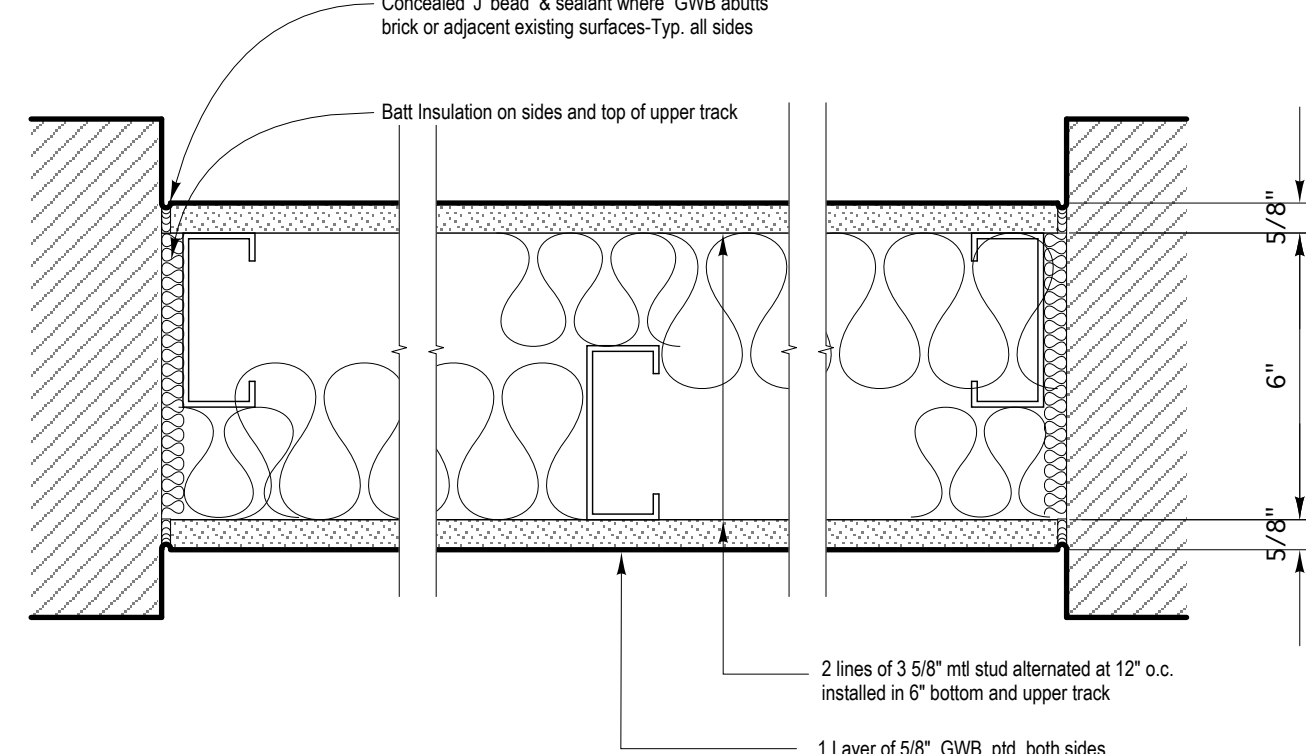
3" = 1'-0"

PARTITION TYPES

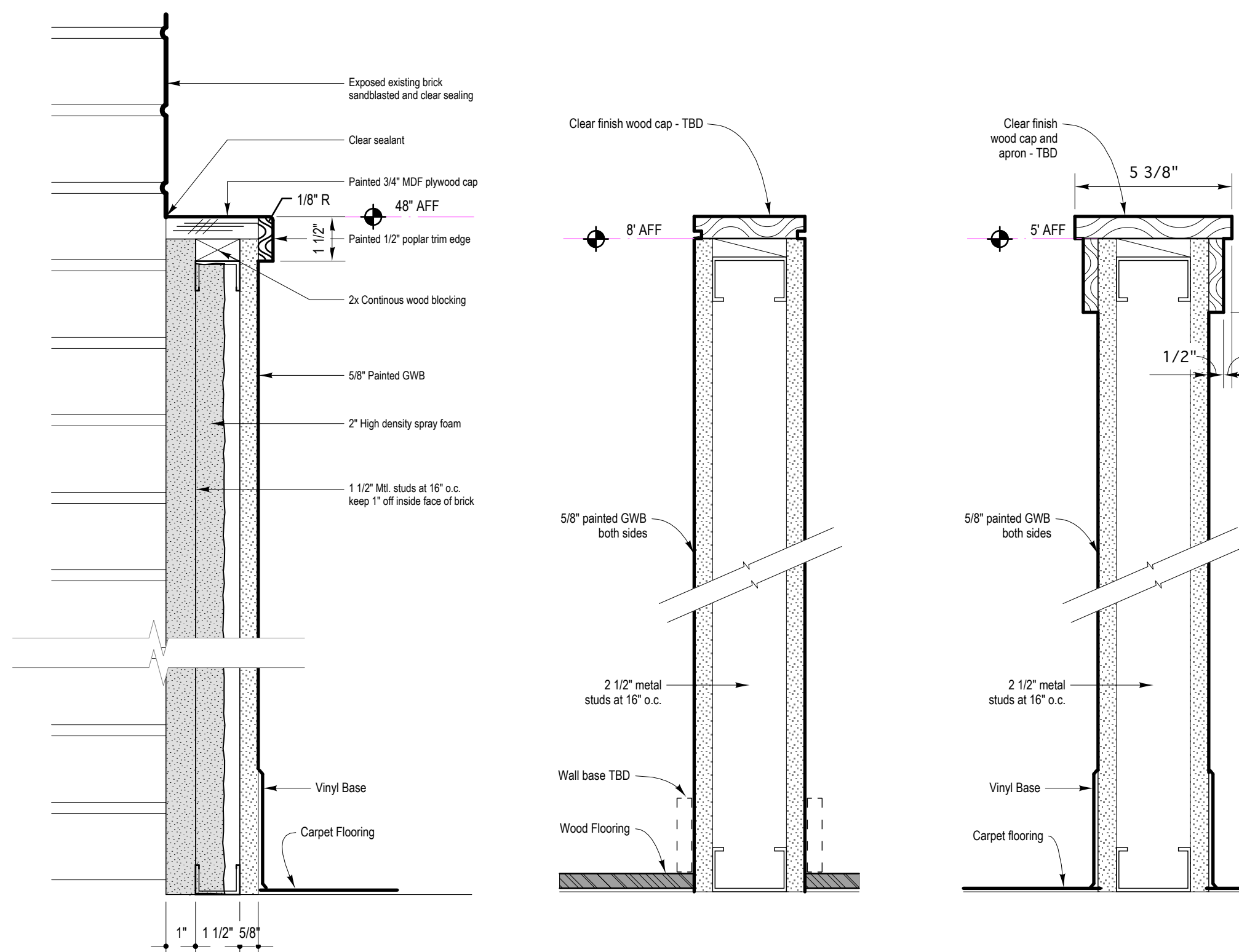
3" = 1'-0"



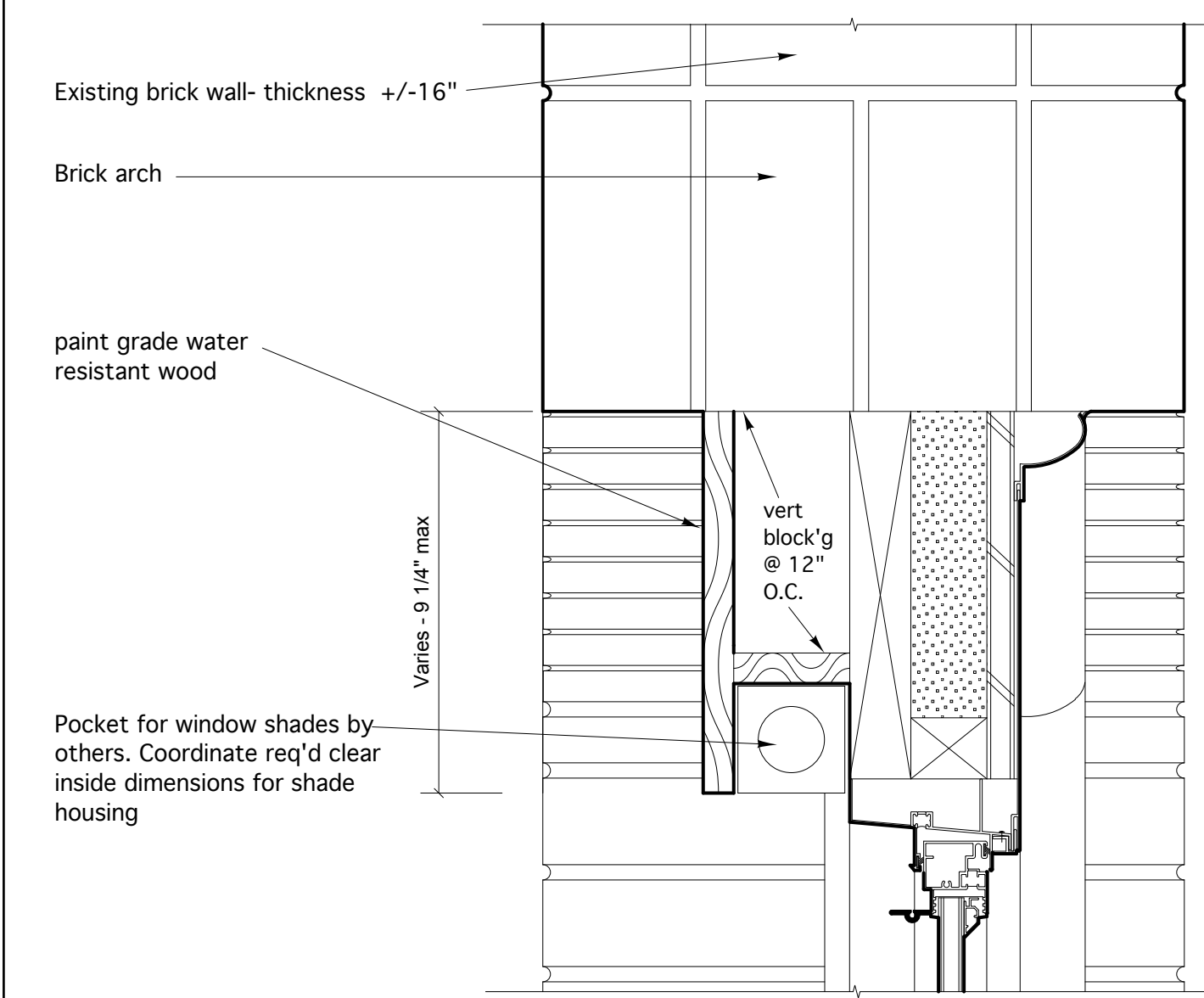
- 1 3/8" Metal Stud Partition
As shown
- 1A 3/8" Metal Stud Partition
Same as '1' except provide moisture resistant GWB at Shower Rm. side
- 1B 6" Metal Stud Partition
Same as '1' except USE 6" stud and provide moisture resistant GWB at Shower Rm. side
- 1C 3/8" Metal Stud Partition
Same as '1' except omit batt insulation
- 1D 3/8" Metal Stud Partition
Same as '1C' except 1 HOUR RATED



2 6" Infill Acoustical Partition @ Existing Brick Opening
As shown

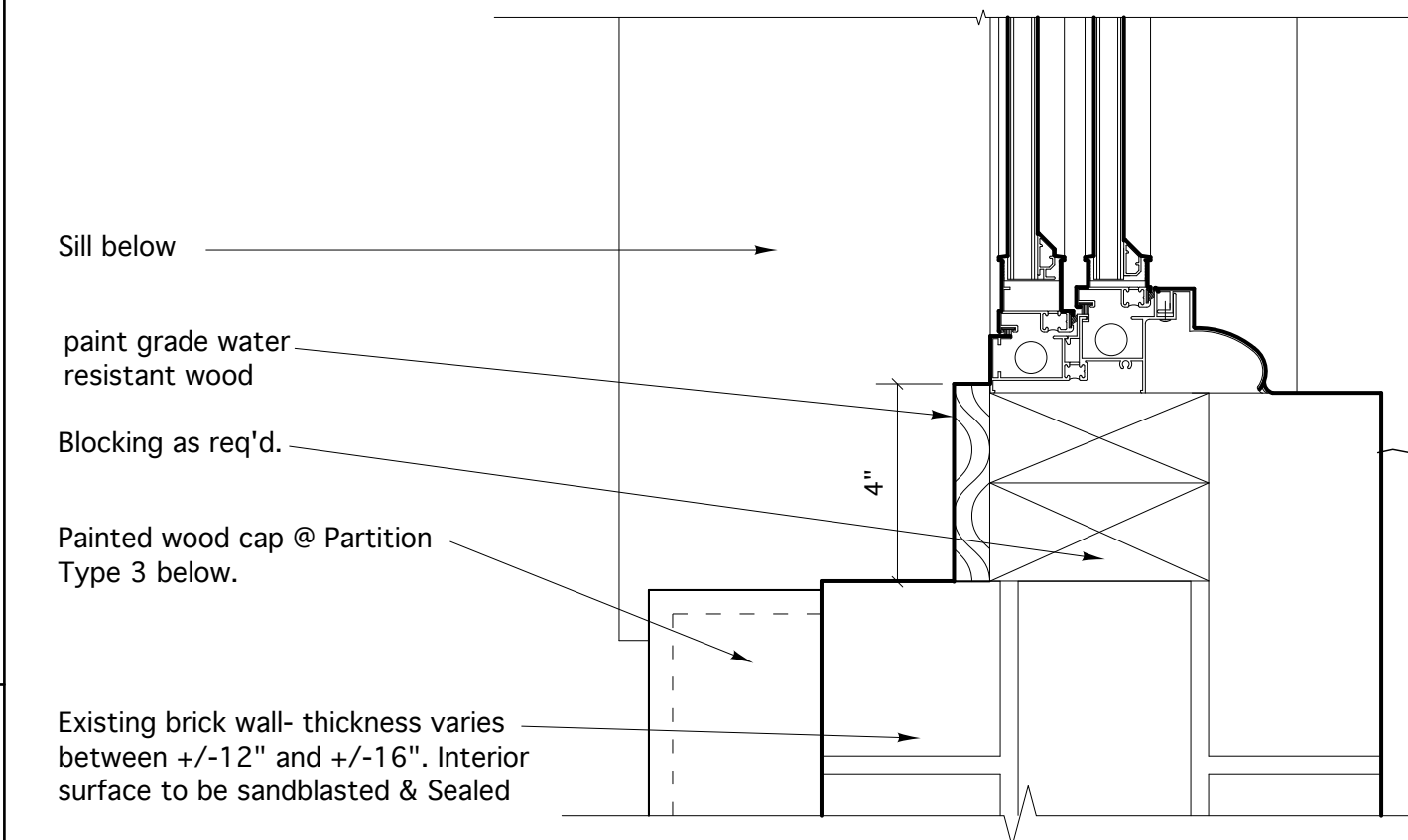


- 3 Exterior Wall Finish at Second Floor as shown
- 4 Closet partitions at Yoga Studio Room #102 as shown
- 5 Open Office Partition as shown



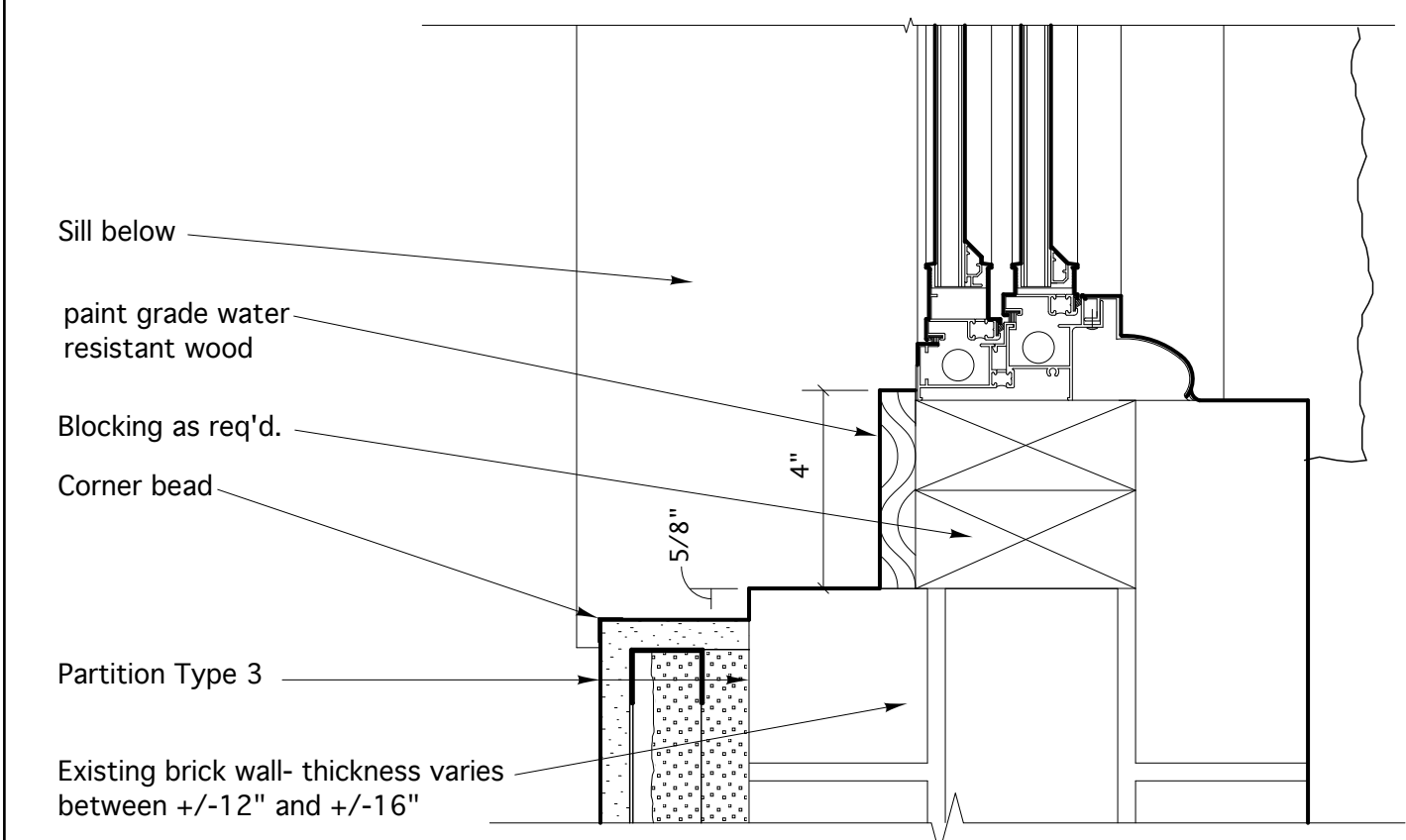
TYPICAL WINDOW HEAD TRIM DETAIL @ BRICK ARCH

Scale: 3" = 1'-0"



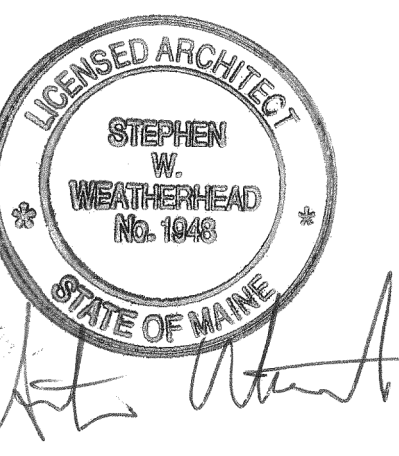
JAMB CONDITION @ Above 48" A.F.F. or as noted

Scale: 3" = 1'-0"



JAMB CONDITION @ Below 48" A.F.F. or as noted

Scale: 3" = 1'-0"



MERRILL'S WHARF
First & Second Floor Fit Up Project
 254 Commercial Street, Portland, Maine

Winton Scott Architects
 5 Milk St. Portland, ME 04101
 207.774.6680 | wintonsscott.com

Mechanical Systems Engineers
 Royal River Center #10
 10 Forest Falls Dr., Yarmouth, ME 04096
 207.846.1441 |

Bartlett Design
 942 Washington St., Bath, ME 04530
 207.443.5447 | bartlettdesigninc@comcast.net>

SCALE: AS NOTED

DOOR, WINDOW AND PARTITION DETAILS

A2.1