

SECTION 26 06 50.16

LIGHTING FIXTURE SCHEDULE

SEE ATTACHED

Project: **Merrill's Wharf 1st and 2nd Floor Fit-Up Project**
Location: Portland, Maine
Date: December 30, 2011

LIGHTING FIXTURE SCHEDULE

Only the luminaires listed in this schedule will be accepted for approval. Lamp numbers refer to *Osram Sylvania* designations. Also approved are equal lamps manufactured by *General Electric*, and *Philips*. All fixtures are 120 volt, unless specifically noted otherwise.



Dimensions: Width = 11-3/4" Length = 48" Recess Height = 3-3/4"

Type: **A6**

Description: Recessed 1 x 4 static fluorescent troffer with flush frame for suspended acoustic tile ceilings. and an acrylic prismatic lens diffuser. Provide an electronic, programmed start non-dimming ballast.

Lamps: (2) F028/835/XP/SS/ECO

Manufacturers: *Columbia* # 4PS14-232G-FSA12-EP120

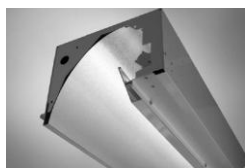
Dimensions: Width = 11-3/4" Length = 48" Recess Height = 3-3/4"

Type: **A8**

Description: Similar to Type A6 except with 3 lamps in cross section.

Lamps: (3) F028/835/XP/SS/ECO

Manufacturers: *Columbia* # 4PS14-332G-FAA12-EP120



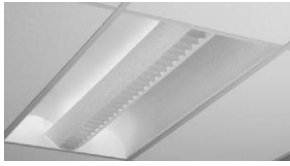
Dimensions: Length = 4' - 0" Width = 8 3/4" Recess Height = 7 3/4"

Type: **A15**

Description: Recessed open perimeter light with direct light distribution. Provide electronic, low harmonic ballast. Provide all necessary fittings including end caps, etc. to make a complete system. Provide trim suitable for installation in a suspended ceiling.

Lamps: (1) F028/835/XP/SS/ECO

Manufacturers: *Focal Point Lighting* # FW4-NS-1T8-1C-120-S-RC-HW-4'



Dimensions: Width = 23 3/4" Length = 47 11/16" Recess Height = 6"

Type: A20

Description: Recessed 2 x 4 direct/indirect troffer with perforated diffuser and a white perforated center radial louver. Fixture shall have flush frame for grid ceilings and electronic, low harmonic ballast. Provide separate switching control of two outside lamps from center lamp.

Lamps: (3) F028/835/XP/SS/ECO

Manufacturers: Alera Lighting # LUML24-332G-WPB-MPO-3EB8LH120



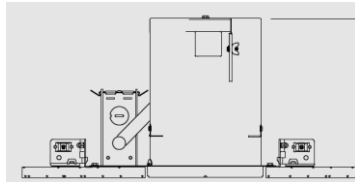
Dimensions: Aperture = 4 1/2" Diameter = 6"
Recess Height = 9 7/8"

Type: B5

Description: Recess down-light with regressed prismatic lens. Provide electronic non-dimming ballast.

Lamps: (1) CF26DT/E/IN/827ECO

Manufacturers: Prescolite # D432EB-4D5 BLANK LW-120V



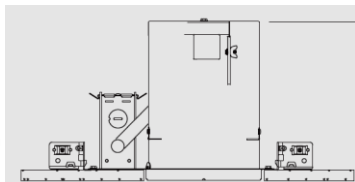
Dimensions: Aperture = 5" Diameter = 6 1/4"
Recess Height = 7 1/2"

Type: B7

Description: Recess down-light with regressed white baffle.

Lamps: (1) 50PAR30/HAL/FL40

Manufacturers: Juno# TC20/205W-WH



Dimensions: Aperture = 5" Diameter = 6 1/4"
Recess Height = 7 1/2"

Type: B8

Description: Recess down-light with adjustable white gimbal ring.

Lamps: (1) 50PAR30/HAL/NSP9

Manufacturers: Juno# TC20/209-WH



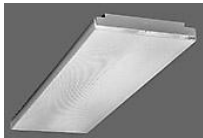
Dimensions: Length = 11 3/4" Height = 5 1/8" Projection = 2 3/4"

Type: E3

Description: Wall mounted emergency light with twin 6-watt halogen lamps and an integral 6-volt battery rated to operate the fixture for 90 minutes upon loss of normal power. Luminaire finish color shall be white.

Lamps: (2) 6W Halogen (by manufacturer)

Manufacturers: *Dual-Lite* # SL1-6H



Dimensions: Length = 48" Height = 2-5/8" Width = 8-1/2"

Type: J10

Description: Surface ceiling fluorescent fixture with prismatic acrylic lens. Provide electronic low harmonic ballast.

Lamps: (2) F028/835/XP/SS/ECO

Manufacturers: *Columbia* # WC4-232-EB8120



Dimensions: Length = 4' - 0" Width = 9" Luminaire Height = 2.6"

Type: N8

Description: Suspended luminaire with 72% downlight/28% uplight distribution. Luminaire shall have parabolic center downlight louvers and a top perforated metal shield. Luminaire finish shall be white. Suspend luminaire to a height of 8' 6" AFF. Provide electronic programmed start non-dimming ballast. Provide integral PIR occupancy sensor mounted at end of luminaire.

Lamps: (3) FO28/835/XP/SS/ECO

Manufacturers: *Finelite* # S10-PLV-4'-3T8-SC-91W-STO-120-FA50"-FE-C4-.88-OBO

Dimensions: Length = 8' - 0" Width = 9" Luminaire Height = 2.6"

Type: N9

Description: Similar to Type N8 except 8 foot length and without integral occupancy sensor and with dual circuit to operate two outside lamps separately from center lamp.

Lamps: (6) FO28/835/XP/SS/ECO

Manufacturers: *Finelite* # S10-PLV-8'-3T8-SC-91W-STO-120-FA50"-FE-C4

Dimensions: Length = 4' - 0" Width = 9" Luminaire Height = 2.6"

Type: N10

Description: Similar to Type N8 without integral occupancy sensor and with a diming ballast.

Lamps: (3) FO28/835/XP/SS/ECO

Manufacturers: *Finelite* # S10-PLV-4'-3T8-SC-91W-STO-120-FA50"-FE-C4

Dimensions: Length = 4' - 0" Width = 9" Luminaire Height = 2.6"

Type: N11

Description: Similar to Type N8 without integral occupancy sensor and with only two lamps in cross section.

Lamps: (2) FO28/835/XP/SS/ECO

Manufacturers: *Finelite* # S10-PLV-4'-3T8-SC-91W-STO-120-FA50"-FE-C4

Dimensions: Length = 4' - 0" Width = 9" Luminaire Height = 2.6"

Type: N12

Description: Similar to Type N8 without integral occupancy sensor.

Lamps: (3) FO28/835/XP/SS/ECO

Manufacturers: *Finelite* # S10-PLV-4'-3T8-SC-91W-STO-120-FA50"-FE-C4



Dimensions: Diameter = 12" Luminaire Height = 8" Overall Height = 22 1/2"

Type: R1

Description: Suspended luminaire with clear prismatic acrylic refractor. Fixture canopy and stem shall be white. Provide integral electronic non-dimming ballast. Install luminaire canopy directly to ceiling deck between joists.

Lamps: (1) CF42DT/E/IN/835/ECO

Manufacturers: *Luraline Lighting* # SL1200 STEM-42TE/120/O



Dimensions: Diameter = 9.75" Overall Height = 37.1"

Type: R9

Description: Suspended luminaire with blown glass diffuser and satin chrome trim finish. Install luminaire canopy directly to ceiling deck between joists. Suspend luminaire with cord with bottom of luminaire at 8'-0" AFF.

Lamps: (2) CF26DD/E/835

Manufacturers: *Eureka Lighting* # 4212LG-SC-2402G-2805-WH-2XCF.D.26



Dimensions: Diameter = 11.5" Luminaire Height = 10.125"

Type: R10

Description: Pendant hung cylindrical luminaire with clear Alzak reflector and brushed aluminum finish. Suspend luminaire at 8'-0" AFF (bottom of luminaire). Provide electronic non-dimming ballast.

Lamps: (2) CF26DD/E/835

Manufacturers: *Prescolite # CFP932EB CR BA*

Type: T7

Description: 24-foot long single circuit lighting track. Provide all necessary fittings including, but not limited to, connectors, live end fitting, end cap, and pendant stem hangers. Suspend track to a height equal to the bottom of the ceiling joists. Track, fittings, and stems shall have a black finish. Lighting fixture heads shall be provided by the tenant.

Manufacturers: *Juno # R8BL (3 lengths)*

Type: T8

Description: Identical to Type T7 except 8-foot track length and track to be mounted directly to ceiling deck. Lighting fixture heads shall be provided by the tenant.

Manufacturers: *Juno # R8BL*



Dimensions: Length= 13" Height = 9"

Type: X4

Description: Wall mounted, single sided exit sign with red letters and white housing. Provide directional arrows as indicated on the plans. Exit sign shall include an integral battery rated to operate the sign for 90 minutes upon loss of normal power.

Lamps: LED (by manufacturer)

Manufacturers: *Dual-Lite # LX-U-R-W-E*
