

Lawrence E. Bartlett

MERRILL'S WHARF First & Second Floor Fit Up Project 254 Commercial Street, Portland, Maine

Winton Scott Architects
5 Milk St. Portland, ME
04101
207.774.6680 |
wintonscott.com

Mechanical Systems
Engineers
Royal River Center #10
10 Forest Falls Dr.,
Yarmouth, ME 04096
207.846.1441 |

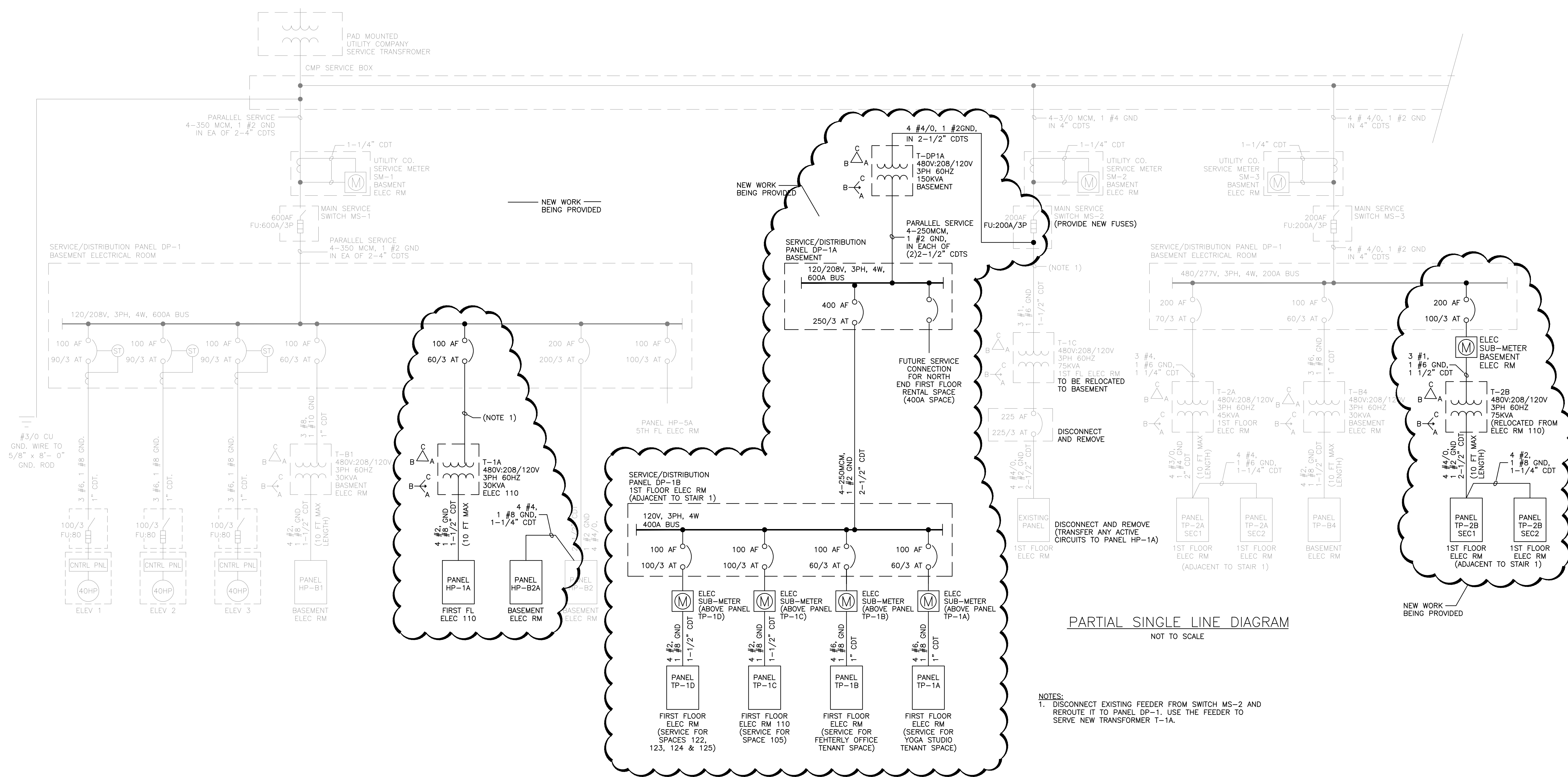
Bartlett Design
942 Washington St., Bath,
ME 04530
207.443.5447 |
bartlettdesigninc@comcast.net

SCALE: NONE

SINGLE LINE
DIAGRAM

E3.2

DECEMBER 29, 2011



PARTIAL SINGLE LINE DIAGRAM
NOT TO SCALE

- NOTES:
- DISCONNECT EXISTING FEEDER FROM SWITCH MS-2 AND REROUTE IT TO PANEL DP-1. USE THE FEEDER TO SERVE NEW TRANSFORMER T-1A.