

**MERRILL'S WHARF**  
**First & Second Floor Fit Up Project**  
**254 Commercial Street, Portland,**  
**Maine**

Winton Scott Architects  
 5 Milk St. Portland, ME  
 04101  
 207.774.6680 |  
 wintonsscott.com

Mechanical Systems  
 Engineers  
 Royal River Center #10  
 10 Forest Falls Dr.,  
 Yarmouth, ME 04096  
 207.846.1441 |

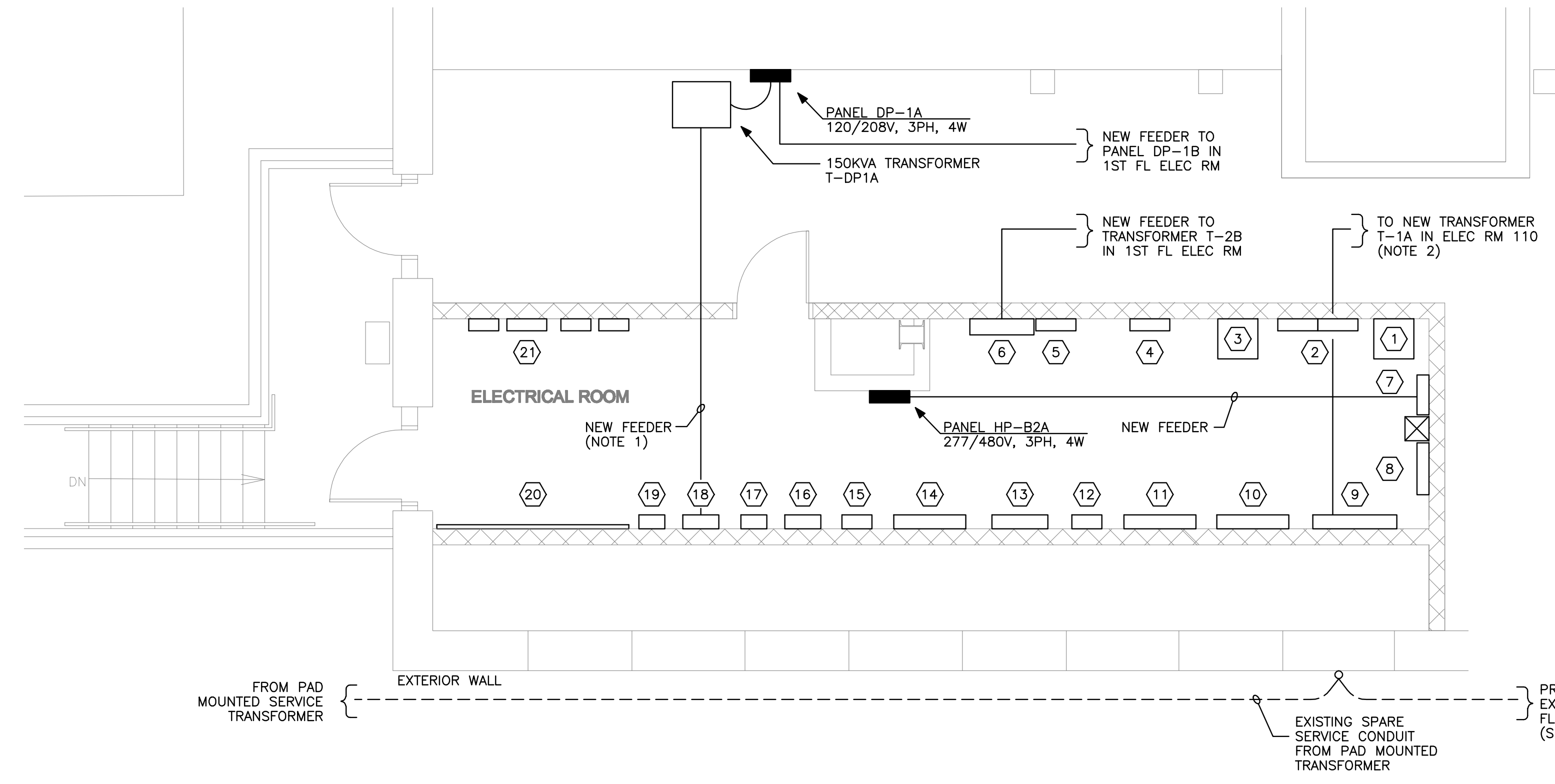
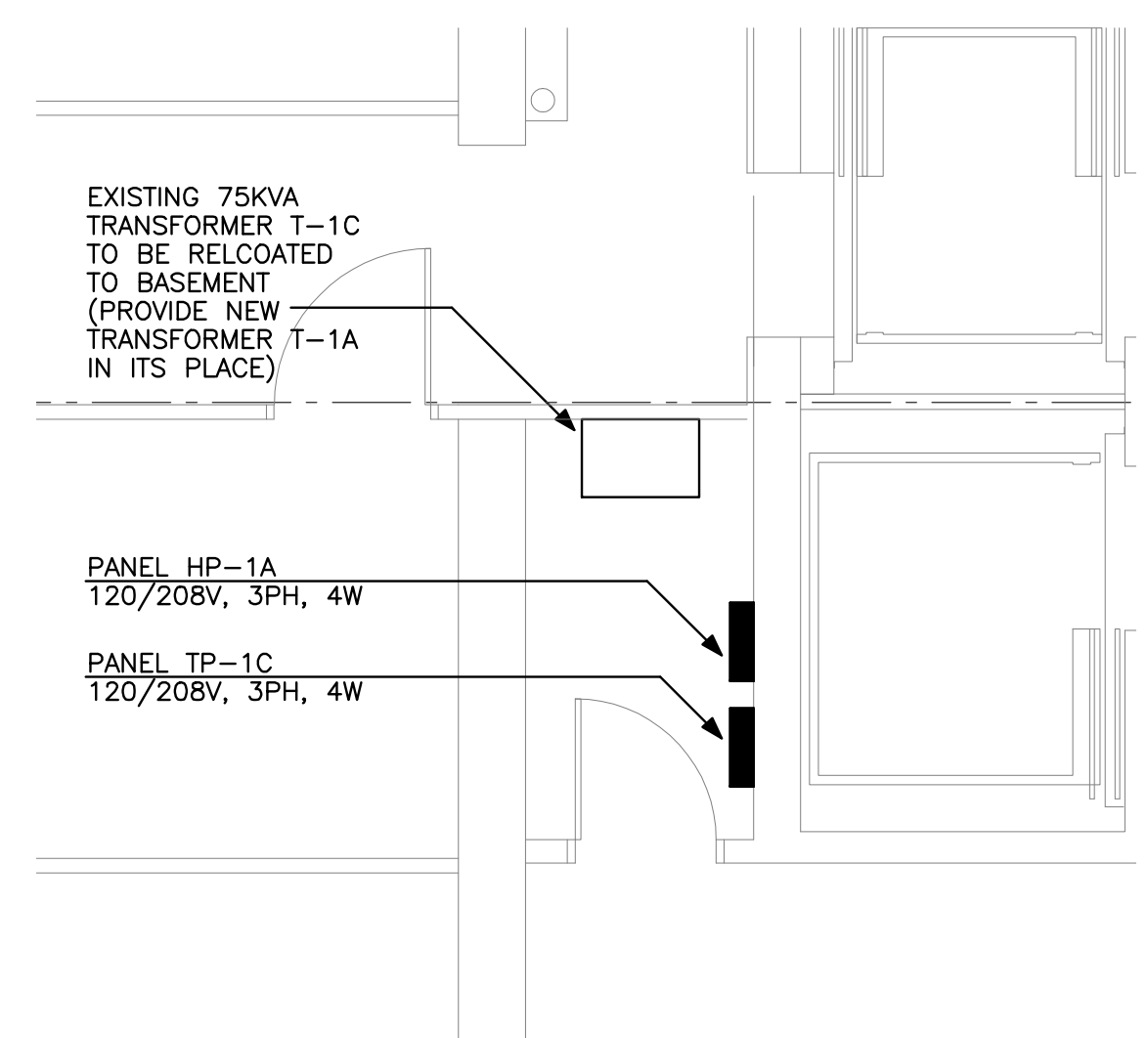
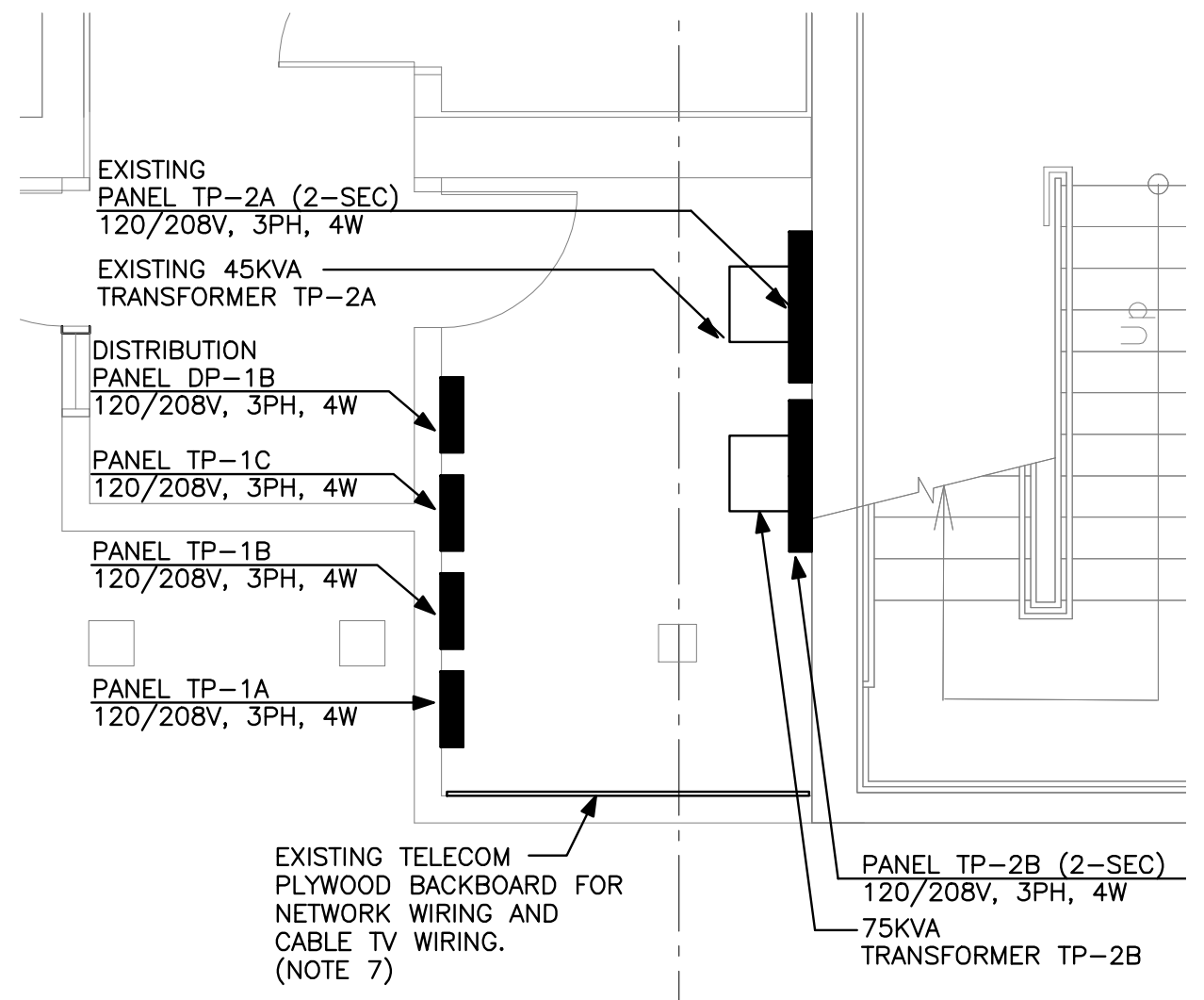
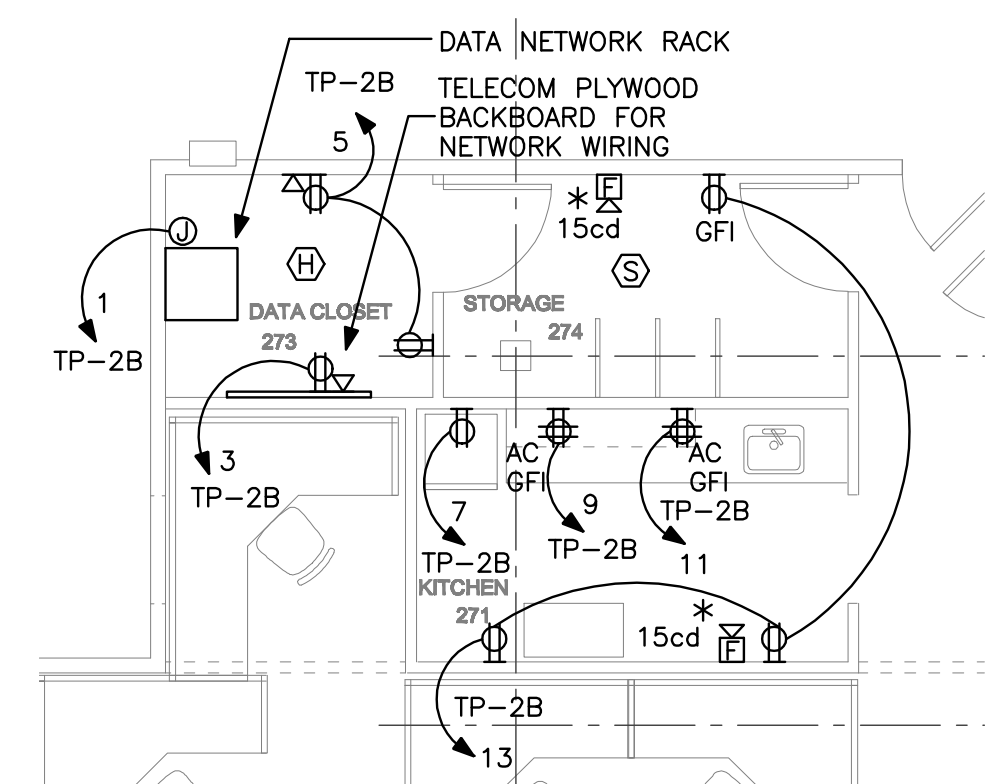
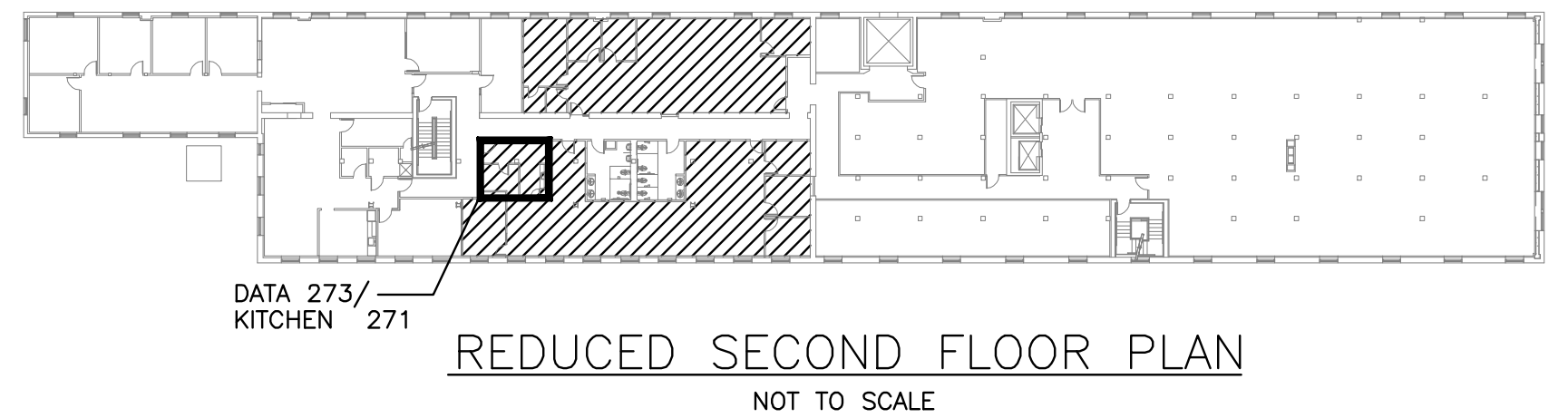
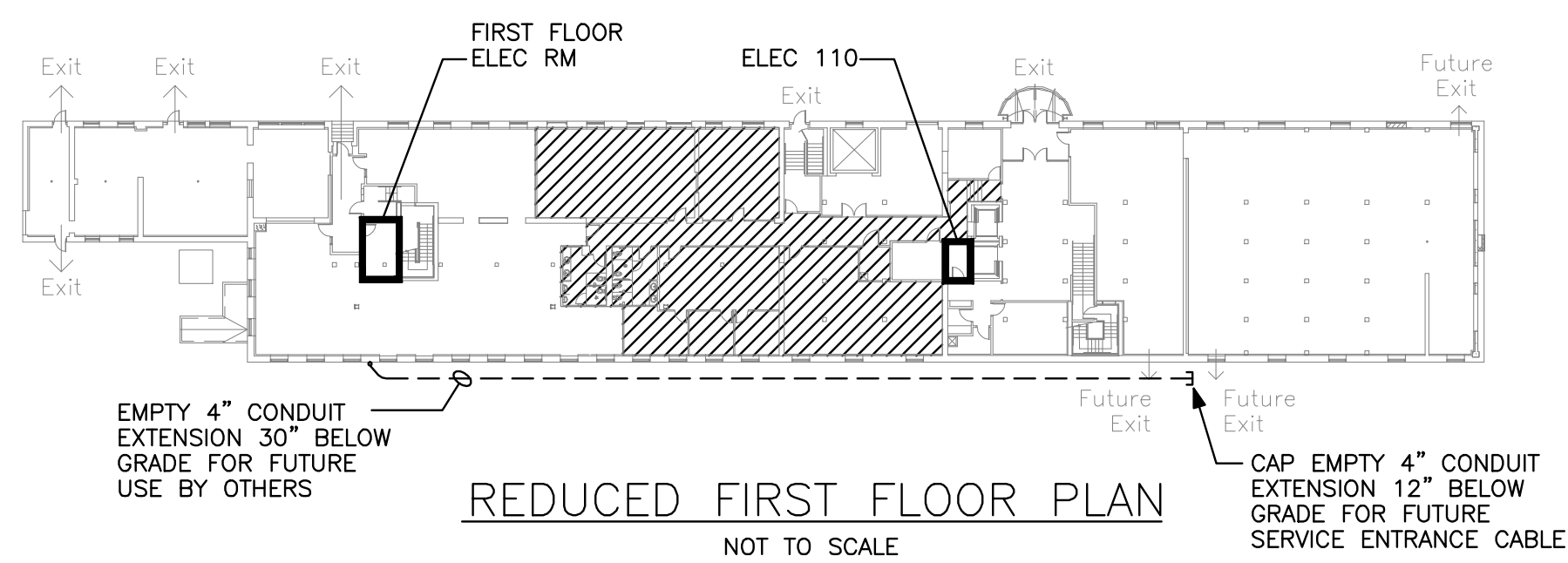
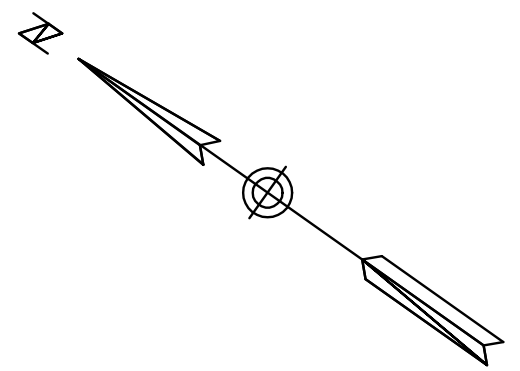
Bartlett Design  
 942 Washington St., Bath,  
 ME 04530  
 207.443.5447 |  
 bartlettdesigninc@comcast.net

SCALE: AS NOTED

PARTIAL PLANS

**E3.1**

DECEMBER 29, 2010



**BASEMENT PLAN NOTES:**  
 1. DISCONNECT EXISTING FEEDER FROM SWITCH (18) THAT PRESENTLY SERVES THE TRANSFORMER IN ELEC RM 110. INTERCEPT THE FEEDER AND REROUTE IT TO PANEL DP-1 (9). REUSE THE FEEDER TO SERVE NEW TRANSFORMER T-1A

- MISC ELEC EQUIPMENT**
- (1) 45KVA TRANSFORMER T-B1
  - (2) HOUSE PANEL HB-B1 (2-SECTION) 120/208V, 3PH, 4W, 225A
  - (3) 75KVA TRANSFORMER T-B3
  - (4) HOUSE PANEL HP-B3 120/208V, 3PH, 4W, 225A
  - (5) PANEL TP-B4 120/208V, 3PH, 4W, 225A
  - (6) DISTRIBUTION PANEL DP-2 277/480V, 3PH, 4W, 225A
  - (7) HOUSE PANEL HP-B2 277/480V, 3PH, 4W, 225A
  - (8) DISTRIBUTION PANEL DP-3 277/480V, 3PH, 4W, 600A
  - (9) DISTRIBUTION PANEL DP-1 277/480V, 3PH, 4W, 800A
  - (10) 800A MAIN FUSED SERVICE SWITCH (HOUSE POWER)
  - (11) SERVICE CABINET (HOUSE POWER)
  - (12) CMP METER (HOUSE POWER)
  - (13) 600A MAIN FUSED SWITCH (PIERCE-ATWOOD)
  - (14) SERVICE CABINET (PIERCE-ATWOOD)
  - (16) CMP METER (PIERCE-ATWOOD)
  - (16) 200A MAIN FUSED SERVICE SWITCH (COMPASS HEALTH)
  - (17) CMP METER (COMPASS HEALTH)
  - (18) 200A MAIN FUSED SERVICE SWITCH (1ST FLOOR - NOT YET LEASED)
  - (19) CMP METER (1ST FLOOR - NOT YET LEASED)
  - (20) TELEPHONE/CABLE TV SERVICE DEMARCATION EQUIPMENT
  - (21) FIRE ALARM PANEL

PROVIDE UNDERGROUND 4" CONDUIT EXTENSION FOR FUTURE USE AT FIRST FLOOR SOUTH END TENANT SPACE (SEE REDUCED 1ST FL PLAN)