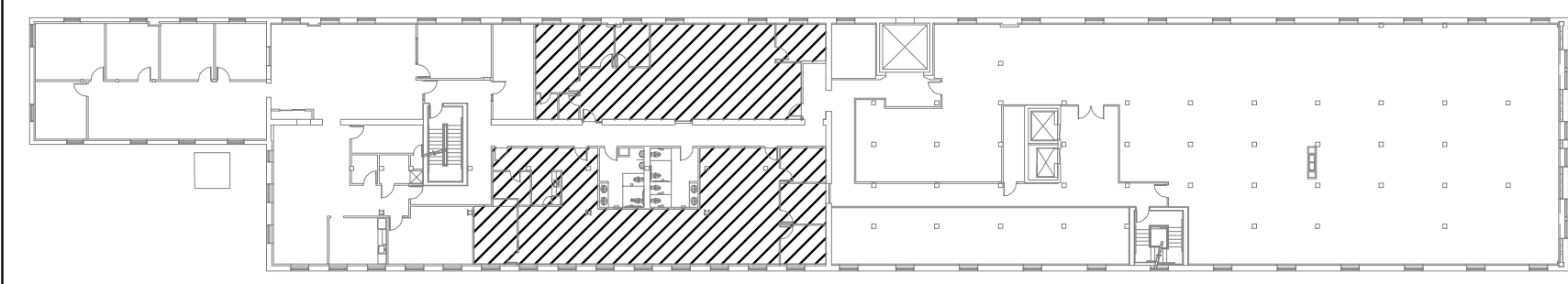


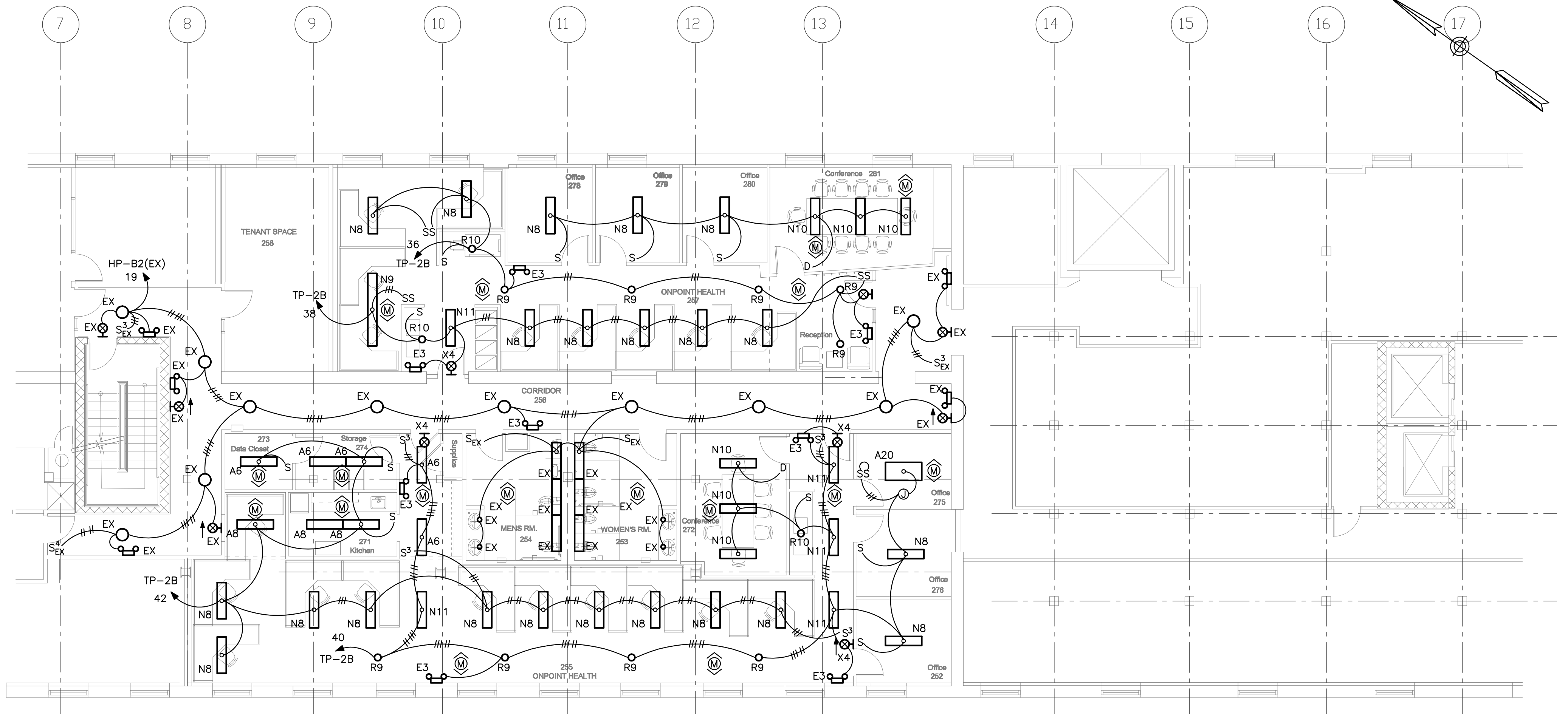
FIRST FLOOR KEY PLAN
NOT TO SCALE



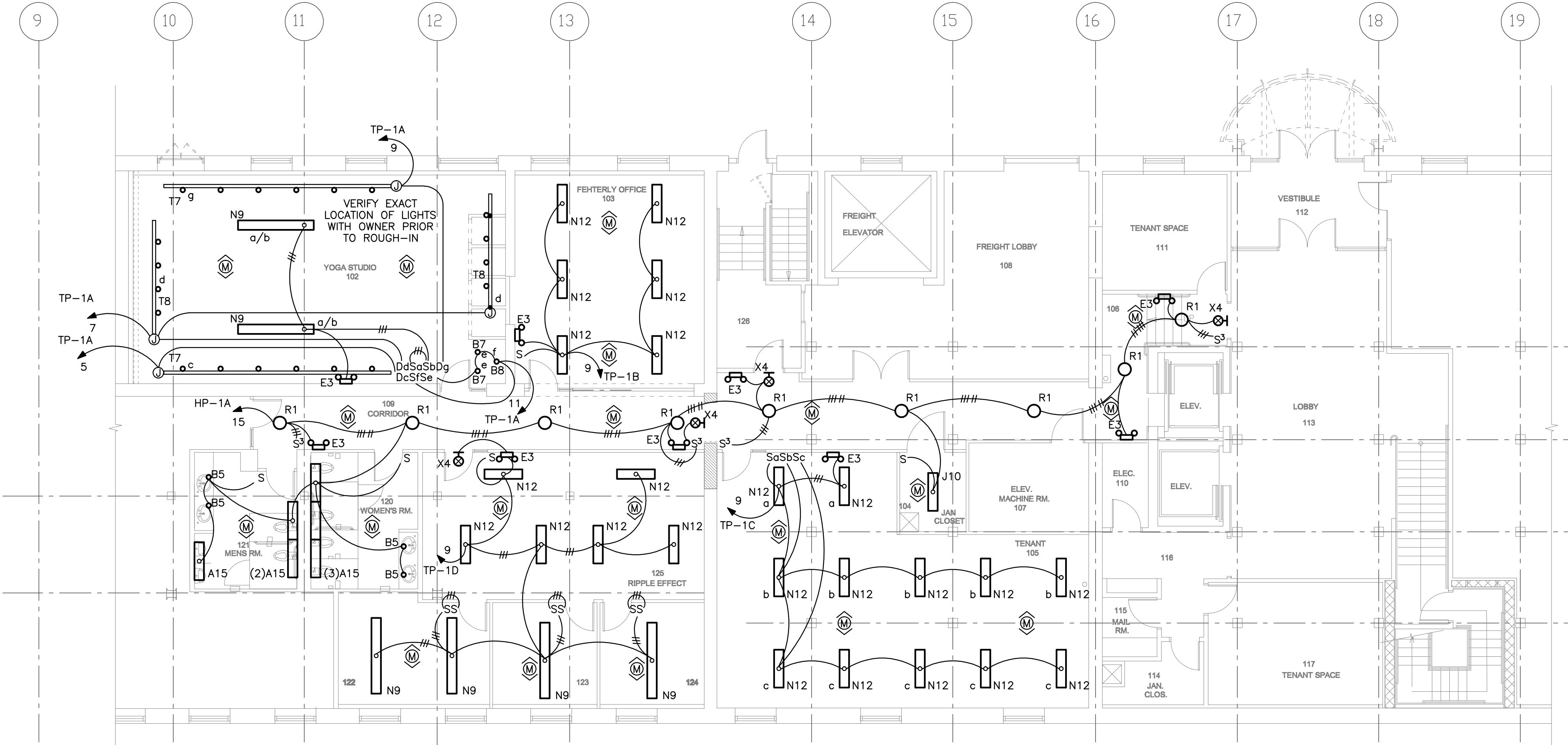
SECOND FLOOR KEY PLAN
NOT TO SCALE

ELECTRICAL PLAN & SINGLE LINE SYMBOLS

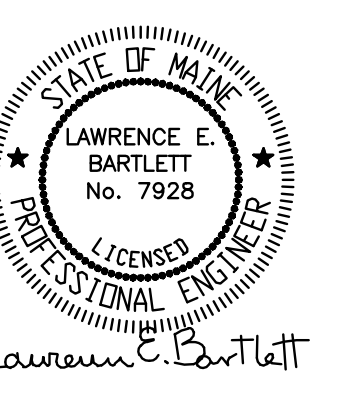
| SYMBOL | DESCRIPTION | SYMBOL | DESCRIPTION |
|--------|---|--------|---------------------------|
| | 125V, 20A, DUPLEX GROUNDED RECEPTACLE | | Ampere Frame Rating |
| | GFI = Ground Fault Interrupt | | CIRCUIT BREAKER |
| | AC = 6" Above Counter or Sink | | Ampere Trip Rating |
| | WN = Wireless Network Outlet (12" below the clg) | | ELECTRICAL CONNECTION |
| | QUAD RECEPTACLE | | GROUND CONNECTION |
| | 250V, SINGLE GROUNDED RECEPTACLE Indicates Ampere Rating | | EQUIPMENT ENCLOSURE |
| | DUPLEX NETWORK OUTLET | | TRANSFORMER |
| | JUNCTION BOX | | Fuse Rating |
| | ELECTRICAL PANELBOARD (See Plan for Details and Mounting) | | DISCONNECT SWITCH |
| | MOTOR STARTER | | No. of Poles |
| | UNFUSED DISCONNECT SWITCH FU = Fused No. of Poles Ampere Rating | | UTILITY CO. SERVICE METER |
| | MANUAL MOTOR STARTER | | SHUNT TRIP |
| | WALL MTD MOTION DETECTOR | | ENCLOSED CIRCUIT BREAKER |
| | CLG MTD MOTION DETECTOR | | |
| | FIRE ALARM AUDIO/VISUAL INDICATOR Indicates Visual Only, No Horn Candela Rating | | |
| | FIRE ALARM PULL STATION | | |
| | FIRE ALARM HEAT DETECTOR | | |
| | FIRE ALARM SMOKE DETECTOR Indicates Duct Mounted | | |
| | MOTOR OPERATED DAMPER Provided Under Div 15 Wired Under Div 16 | | |
| | RECESSED/SURFACE MOUNTED 1X4 LIGHTING FIXTURE Fixture Designation Switching Control Designation (See Lighting Fixture Schedule for Details) | | |
| | RECESSED/SURFACE MOUNTED 2X4 LIGHTING FIXTURE Fixture Designation Switching Control Designation (See Lighting Fixture Schedule for Details) | | |
| | RECESSED/SURFACE MOUNTED CIRCULAR LIGHTING FIXTURE Fixture Designation Switching Control Designation (See Lighting Fixture Schedule for Details) | | |
| | WALL MOUNTED EMERGENCY LIGHTING FIXTURE Fixture Designation (See Lighting Fixture Schedule for Details) | | |
| | WALL MOUNTED EXIT SIGN Fixture Designation (See Lighting Fixture Schedule for Details) Provide Directional Arrows as Indicated on Plans | | |
| | CEILING MOUNTED EXIT SIGN Fixture Designation (See Lighting Fixture Schedule for Details) Provide Directional Arrows as Indicated on Plans | | |
| | LIGHTING/DEVICE SWITCH 3 = Three-Way Type 4 = Four-Way Type WP = Weatherproof EX = Existing Switching Control Designation (See Plans for Details) | | |
| | LIGHTING DIMMER 3 = Three-Way Type 4 = Four-Way Type EX = Existing Switching Control Designation (See Plans for Details) | | |
| | HOMERUN TO PANELBOARD Indicates No. of Wires, Excluding Ground Circuit No. Panelboard Designation | | |



SECOND FLOOR LIGHTING
1/8" = 1'-0"



FIRST FLOOR LIGHTING
1/8" = 1'-0"



MERRILL'S WHARF
First & Second Floor Fit Up Project
254 Commercial Street, Portland,
Maine

Winton Scott Architects
 5 Milk St. Portland, ME
 04101
 207.774.6680 |
 wintonsscott.com

Mechanical Systems
 Engineers
 Royal River Center #10
 10 Forest Falls Dr.,
 Yarmouth, ME 04096
 207.846.1441 |

Bartlett Design
 942 Washington St., Bath,
 ME 04530
 207.443.5447 |
 bartlettdesigninc@comcast.net

SCALE: AS NOTED

LIGHTING PLANS

E2.1

DECEMBER 29, 2011