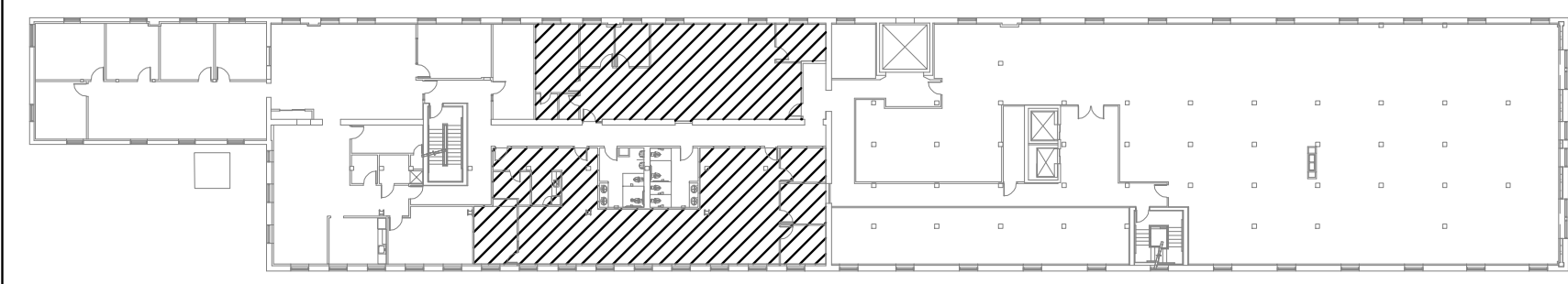
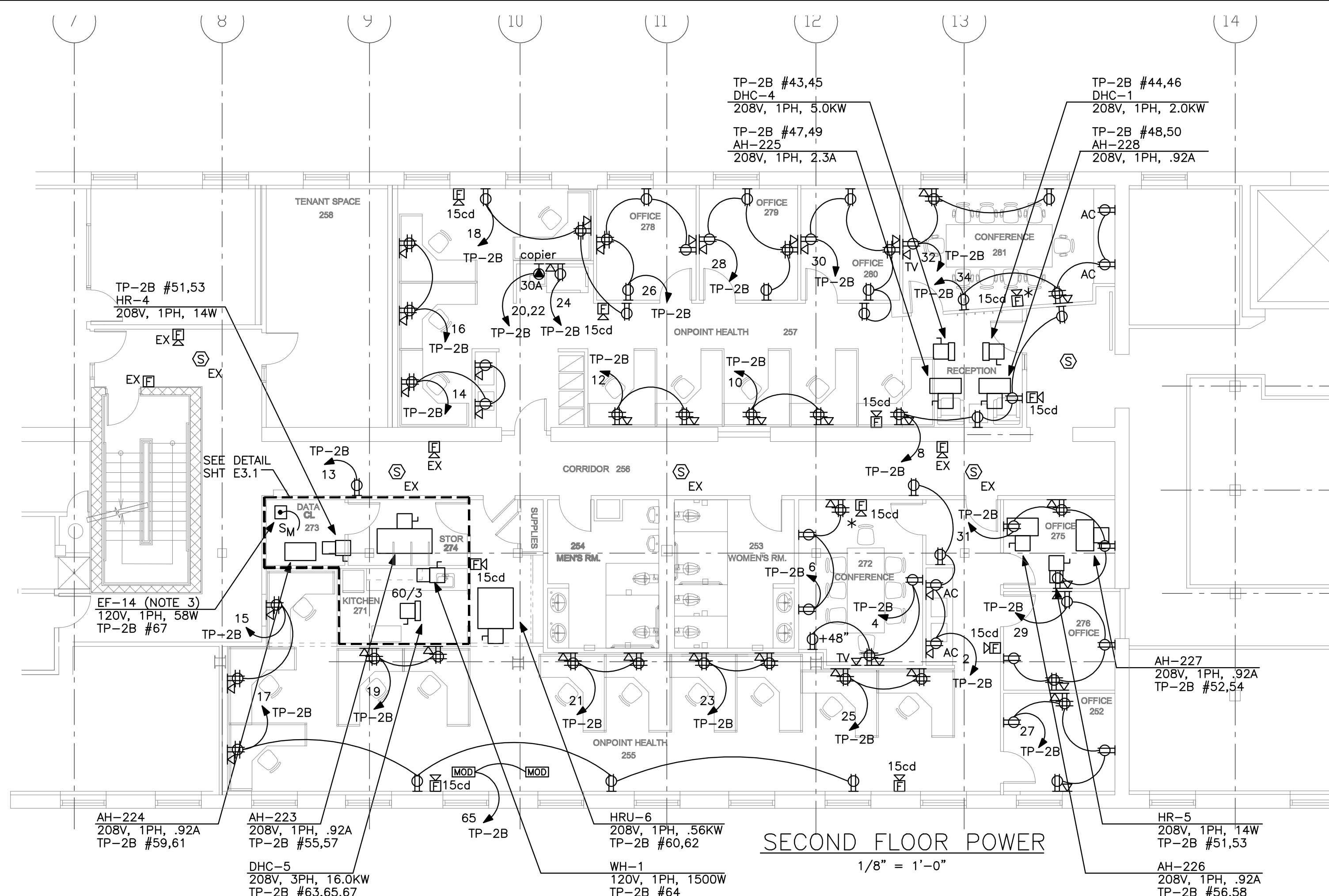


FIRST FLOOR KEY PLAN  
NOT TO SCALE

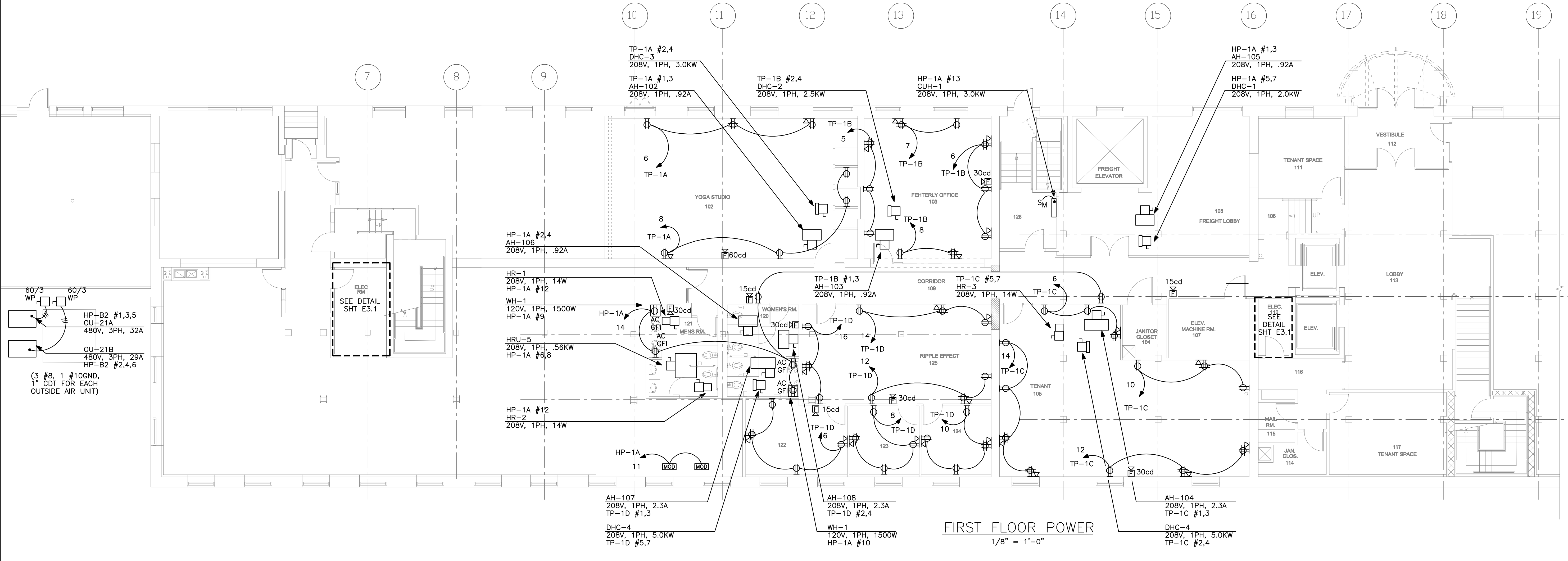


SECOND FLOOR KEY PLAN  
NOT TO SCALE

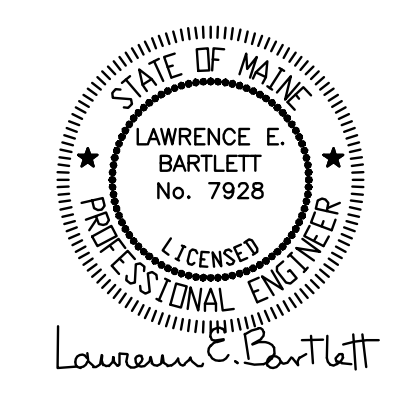


SECOND FLOOR POWER  
1/8" = 1'-0"

- DRAWING E1.1 NOTES:**
- COORDINATE EXACT LOCATION OF ALL MECHANICAL EQUIPMENT PRIOR TO ROUGH-IN.
  - EXCEPT WHERE SPECIFICALLY NOTED OTHERWISE, ALL DISCONNECT SWITCH SIZES SHALL BE 30A/2P.
  - EXHAUST FAN EF-14 SHALL OPERATE FROM ATC SYSTEM.
  - FIRE ALARM DEVICES IN EXISTING SPACES THAT ARE NOT PART OF THIS CONTRACT ARE NOT SHOWN.
  - WHERE EXISTING FIRE ALARM DEVICES ARE NOT SHOWN IN CONTRACT AREA THE DEVICES ARE TO BE REMOVED (REUSE IF POSSIBLE) AND A BLANK FACEPLATE SHALL BE PROVIDED IN ITS PLACE.
  - PROVIDE NEW FIRE ALARM DEVICES AS SHOWN AND WIRE TO EXISTING FIRE ALARM CONTROL PANEL.
  - WIRE NETWORK OUTLETS IN SECOND FLOOR ONPOINT RENTAL SPACE TO EQUIPMENT RACK IN DATA CLOSET 273. WIRE ALL OTHER OUTLETS TO PATCH PANELS TO BE PROVIDED AT THE EXISTING TELECOM BACKBOARD IN THE FIRST FLOOR ELEC RM YOGA STUDIO 102 12 PORT PATCH PANEL FEETLERLY OFFICE 103 12 PORT PATCH PANEL RIPPLE EFFECT 125 24 PORT PATCH PANEL TENANT 105 24 PORT PATCH PANEL
  - WIRE TO CABLE TV OUTLETS IN SECOND FLOOR ONPOINT RENTAL SPACE TO TELECOM BACKBOARD IN DATA CLOSET 273. PROVIDE TWO 2" EMPTY CONDUITS FROM DATA CLOSET 273 TO THE INCOMING TELECOM SERVICE BOARD IN THE BASEMENT ELECTRICAL ROOM FOR NETWORK SERVICE CABLES AND CABLE TV SERVICE CABLE (SERVICE CABLES BY TENANT).



FIRST FLOOR POWER  
1/8" = 1'-0"



**MERRILL'S WHARF**  
**First & Second Floor Fit Up Project**  
**254 Commercial Street, Portland,**  
**Maine**

Winton Scott Architects  
 5 Milk St. Portland, ME 04101  
 207.774.6680 | wintonscott.com

Mechanical Systems Engineers  
 Royal River Center #10  
 10 Forest Falls Dr., Yarmouth, ME 04096  
 207.846.1441 |

Bartlett Design  
 942 Washington St., Bath, ME 04530  
 207.443.5447 | bartlettdesigninc@comcast.net

SCALE: AS NOTED

POWER PLANS

**E1.1**

DECEMBER 29, 2010