

MERRILL'S WHARF
First & Second Floor Fit Up Project
 254 Commercial Street, Portland, Maine

Winton Scott Architects
 5 Milk St. Portland, ME 04101
 207.774.6680 | wintonscott.com

Mechanical Systems Engineers
 Royal River Center #10
 10 Forest Falls Dr., Yarmouth, ME 04096
 207.846.1441
 Facebook: Mechanical Systems Engineers

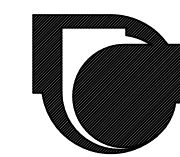
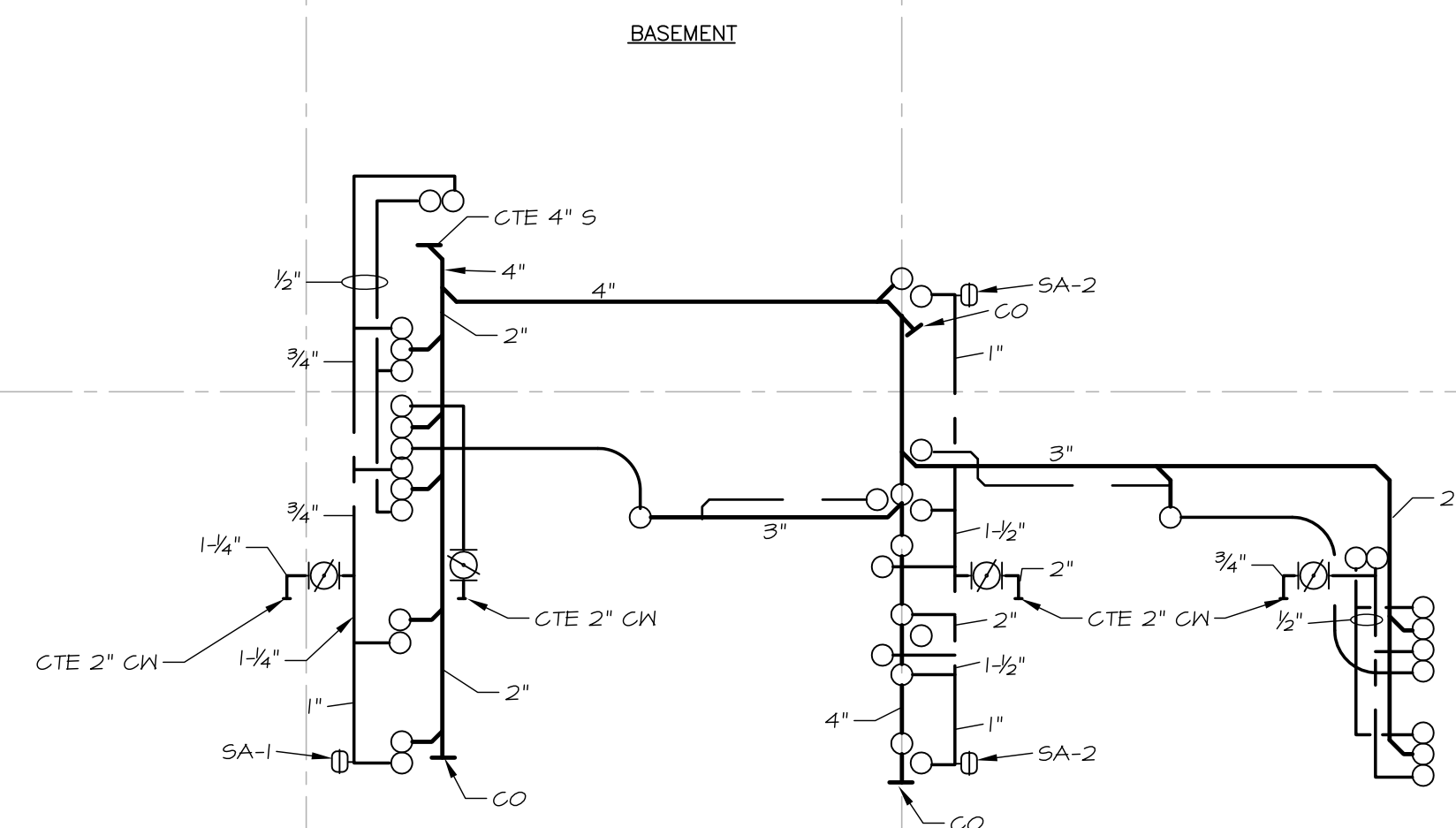
Bartlett Design
 942 Washington St., Bath, ME 04530
 207.443.5447 | bartlettdesigninc@comcast.net

SCALE: 1/4" = 1'-0"

**BASEMENT
 PLUMBING
 PLAN**

P1

DECEMBER 21, 2011



MECHANICAL SYSTEMS ENGINEERS
 ROYAL RIVER CENTER, UNIT #10
 10 FOREST FALLS DRIVE
 YARMOUTH, MAINE 04096
 (207) 846-1441

© COPYRIGHT 2011 M.S.E. Proj. 1150