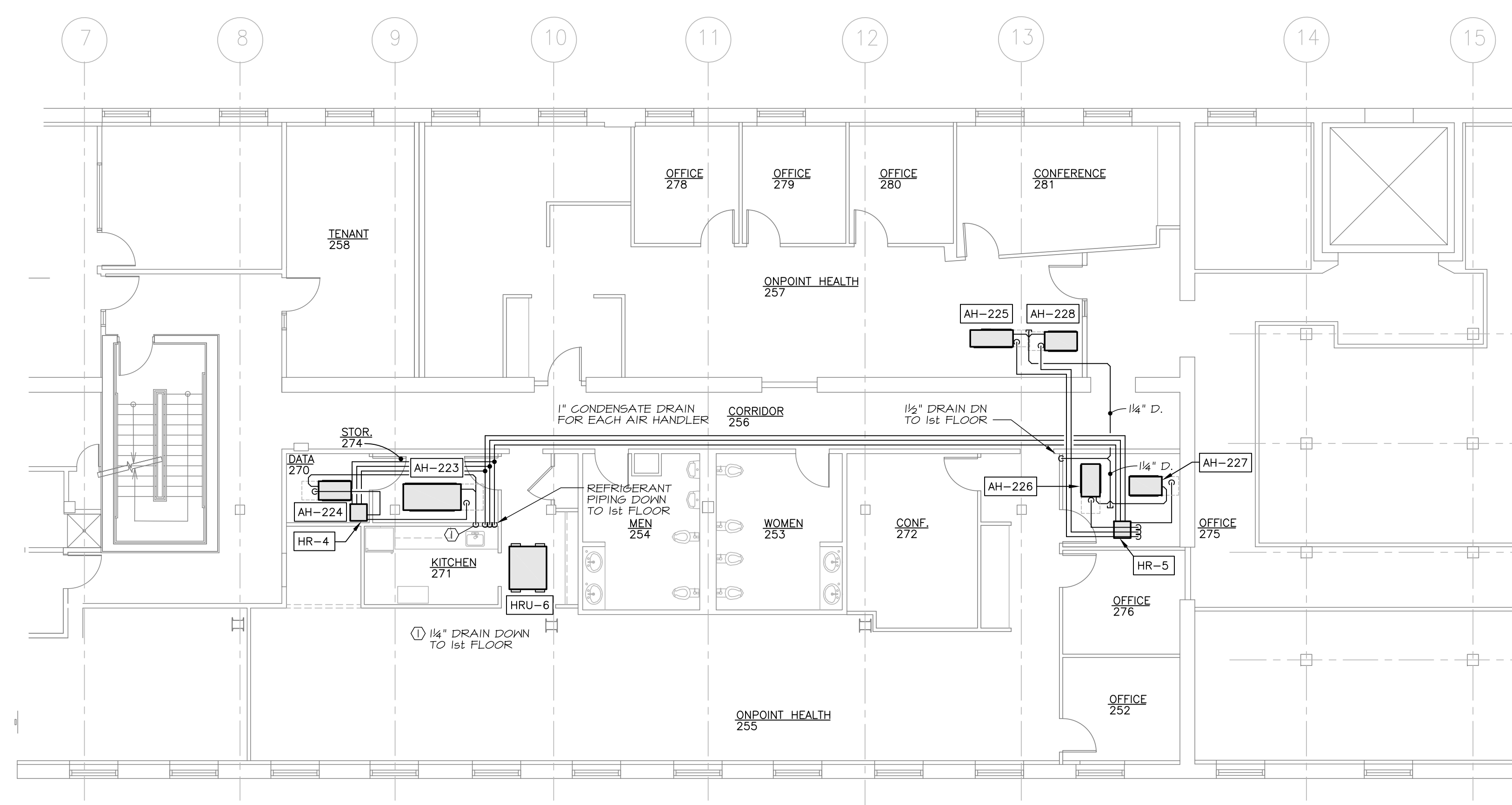
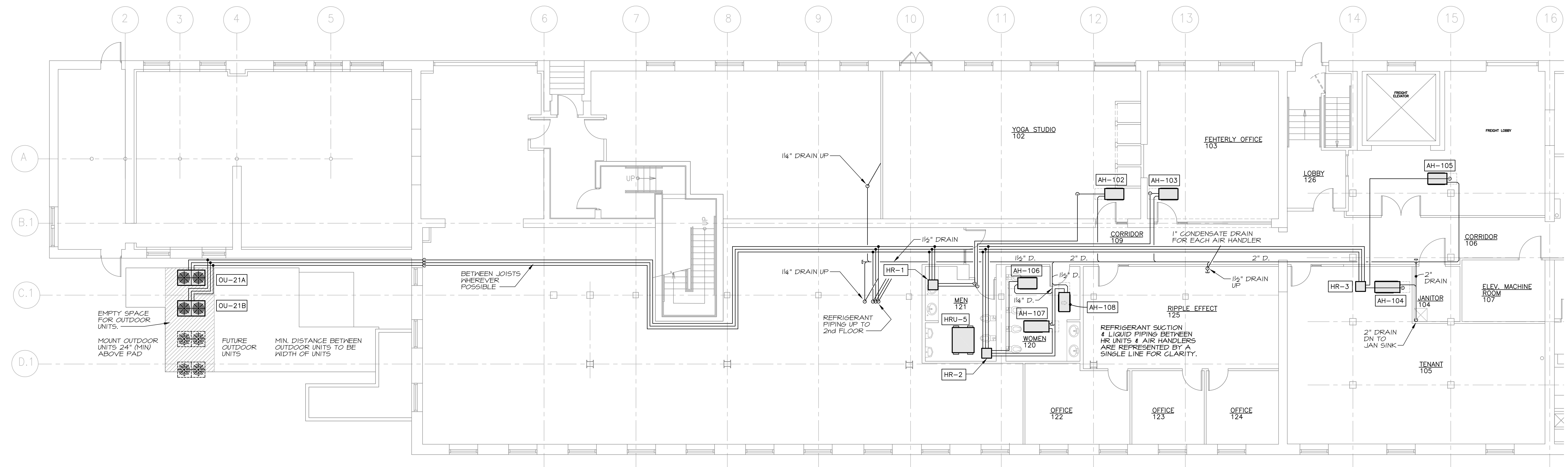


HEAT RECOVERY (HR) UNITS
 UNITS ARE CONTROL DEVICES TO DISTRIBUTE REFRIGERANT TO AIR HANDLERS AS REQUIRED BY LOAD DEMANDS. DEVICES SHALL BE CAPABLE OF CONNECTING UP TO FOUR (4) AIR HANDLERS AND SHALL OPERATE ON 208V-60-1P POWER, 14 WATTS INPUT FOR BOTH HEATING AND COOLING, 0.10 MCA EACH.



1 SECOND FLOOR REFRIGERANT PIPING
 SCALE: 1/8" = 1'-0"



2 FIRST FLOOR REFRIGERANT PIPING
 SCALE: 1/8" = 1'-0"

MERRILL'S WHARF
First & Second Floor Fit Up Project
 254 Commercial Street, Portland, Maine

Winton Scott Architects
 5 Milk St. Portland, ME 04101
 207.774.6680 | wintonsscott.com

Mechanical Systems Engineers
 Royal River Center #10
 10 Forest Falls Dr., Yarmouth, ME 04096
 207.846.1441
 Facebook: Mechanical Systems Engineers

Bartlett Design
 942 Washington St., Bath, ME 04530
 207.443.5447 | bartlettdesigninc@comcast.net

SCALE: 1/8" = 1'-0"

REFRIGERANT PIPING PLANS

M3

DECEMBER 21, 2011



MECHANICAL SYSTEMS ENGINEERS
 ROYAL RIVER CENTER, UNIT #10
 10 FOREST FALLS DRIVE
 YARMOUTH, MAINE 04096
 (207) 846-1441
 © COPYRIGHT 2011 M.S.E. Proj. 1150

December 20, 2011 - 11:23 am
 \\merrill\projects\1150 Merrill Wharf Floors 1 and 2\Drawings\1150_M3-M4.dwg