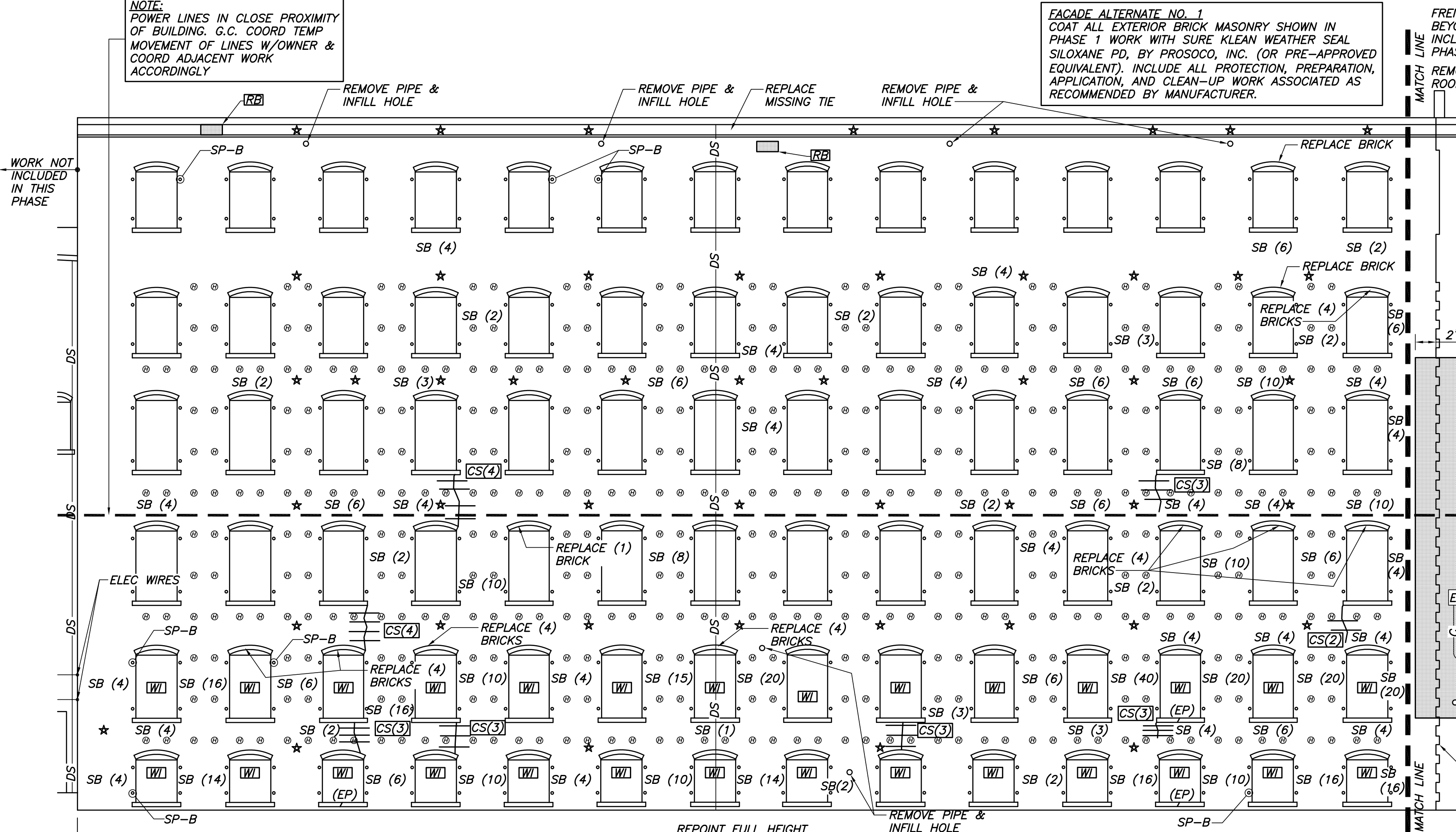
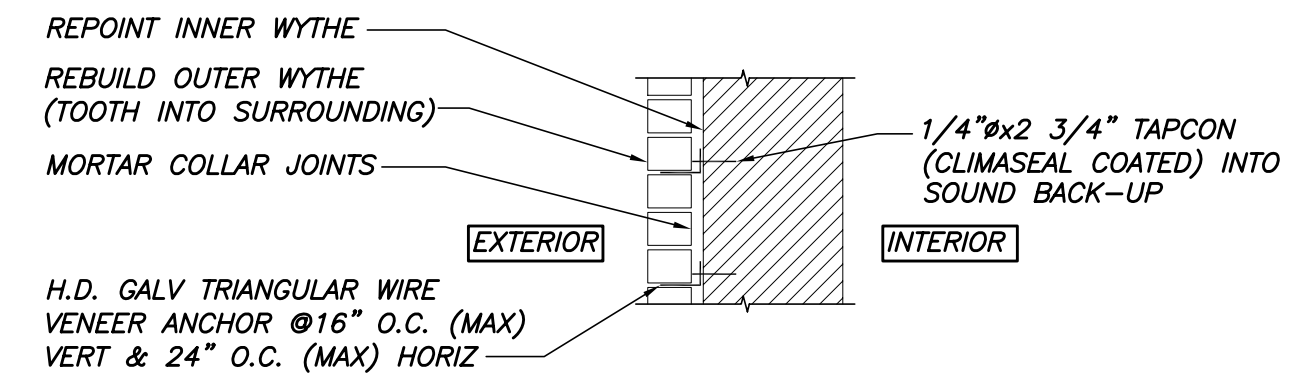


NOTE: POWER LINES IN CLOSE PROXIMITY OF BUILDING. G.C. COORD TEMP MOVEMENT OF LINES W/OWNER & COORD ADJACENT WORK ACCORDINGLY

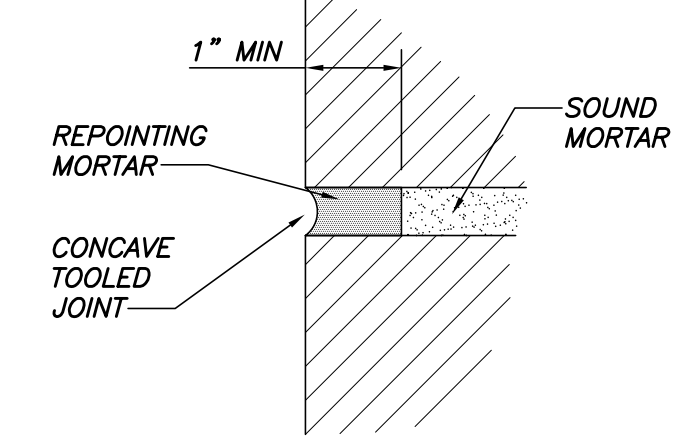
FAÇADE ALTERNATE NO. 1
COAT ALL EXTERIOR BRICK MASONRY SHOWN IN PHASE 1 WORK WITH SURE KLEAN WEATHER SEAL SILOXANE PD. BY PROSOCO, INC. (OR PRE-APPROVED EQUIVALENT). INCLUDE ALL PROTECTION, PREPARATION, APPLICATION, AND CLEAN-UP WORK ASSOCIATED AS RECOMMENDED BY MANUFACTURER.



SOUTHWEST ELEVATION
1/8"=1'-0"

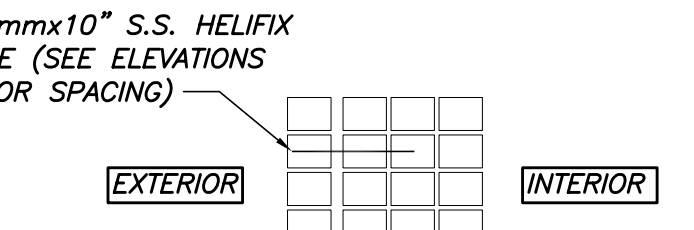


TYP OUTER WYTHE REBUILDING DETAIL



NOTES:
1. DO NOT DAMAGE EXISTING MASONRY.
2. REPOINTING MORTAR COLOR SHALL BE APPROVED BY ARCH & OWNER.
3. REFERENCE THE PROJECT SPECIFICATIONS FOR ADDITIONAL REQUIREMENTS

TYPICAL REPOINTING DETAIL



TYP HELIFIX WYTHE REPINNING DETAIL

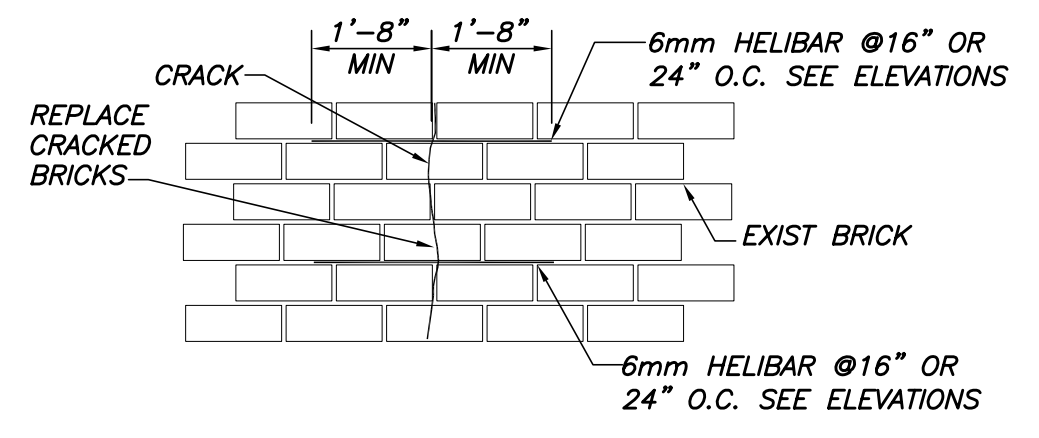
HELIFIX WYTHE PINNING PROCEDURE:
1. AREAS SHOWN ON THE DRAWINGS TO BE REINFORCED BY MEANS OF A "HELIFIX DRYFIX PINNING" TECHNIQUE SHALL UTILIZE THE 8mm HELIFIX 304 STAINLESS STEEL HELICAL ROD AS MANUFACTURED BY HELIFIX NORTH AMERICA, 110 MAPLECRETE ROAD, CONCORD, ONTARIO, CANADA, 888-992-9989. REFERENCE MANUFACTURER FOR PROCEDURE.
2. PATCH HOLES WITH PATCHING MORTAR TO MATCH BRICK COLOR.

GENERAL NOTES

1. WORK ASSOCIATED WITH OTHER FAÇADE AREAS, CMU WINDOW INFILL AT SECOND FLOOR & ABOVE, RESTORING/TIGHTENING WALL TIES (EXCEPT AS NOTED ON PARTIAL ROOF FRAMING), INTERIOR MASONRY, AND WOOD FRAMING IS NOT INCLUDED IN THIS PHASE AND WILL BE ISSUED IN LATER DRAWING SETS.
2. REMOVE ALL MISC. FERROUS METAL, BOLTS, AND HARDWARE (WITH EXCEPTION OF SHUTTER PINS AND WALL TIES) AND PATCH.
3. RESET TOP COURSE AT TOP OF ALL WALLS. COORDINATE WORK WITH RE-ROOFING REQUIREMENTS. PROVIDE ALLOWANCE FOR REPOINTING/REBUILDING AREAS CONCEALED BY ROOFING.
4. INFILL LOCATIONS WHERE BRICK REMOVED FOR OBSERVATION - APPROX 12 BRICKS REMOVED.

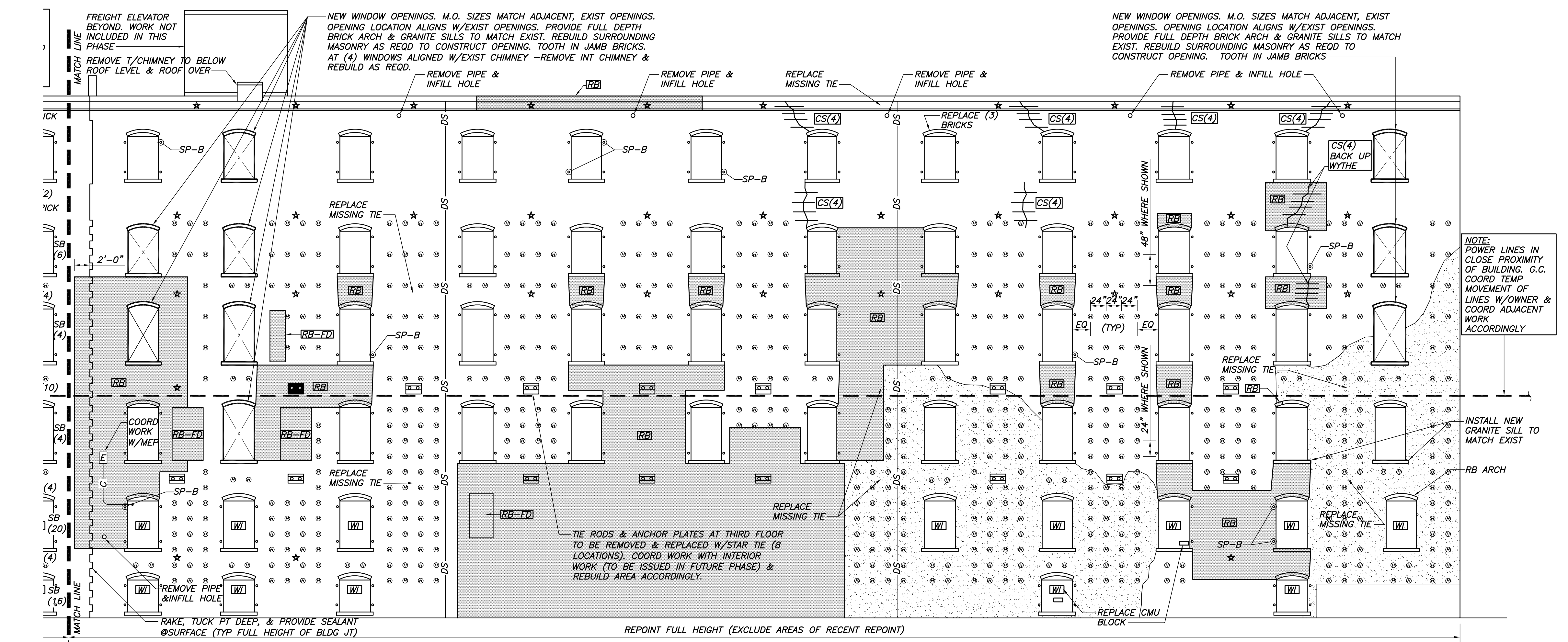
LEGEND

- RB** REBUILD OUTER WYTHE, RAKE & REPOINT BACK-UP WYTHE. ANCHOR NEW OUTER WYTHE TO SOUND BRICK PER TYP DETAIL & SPECIFICATIONS. REBUILD WITH SOUND SALVAGED BRICK AND/OR WITH NEW BRICK APPROVED BY OWNER. TOOTH REBUILD INTO SURROUNDING MASONRY.
- RB-FD** IN ADDITION TO REBUILDING OUTER WYTHE AS NOTED ABOVE, PROVIDE NEW CMU BACK UP. CMU WYTHES TO BE COMPRISED AS PER TYP DETAIL. PROVIDE EXIST WALL HORIZONTAL JOINT REINFORCEMENT AT 16" O.C. VERTICAL. GROUT CMU SOLID & TOOTH INTO SURROUNDING MASONRY.
- SB (#)** EXCESSIVELY SPALLED, OR CRACKED BRICK REQUIRING REPLACEMENT. "(#)" INDICATES QUANTITY TO BE REPLACED IN VICINITY OF MARK. "CARRY 25% CONTINGENCY TO QUANTITY SHOWN."
- RE** AREA OF EXISTING REPOINTED BRICK NOT REQUIRING NEW REPOINTING.
- H** HELIFIX 8MM STAINLESS STEEL DRYFIX MASONRY REPAIR PER TYPICAL DETAIL AND SPECIFICATIONS AT SPACING SHOWN ON ELEVATIONS.
- CS(#)** HELIBAR 6MM STAINLESS STEEL CRACK STITCH PER TYPICAL DETAILS AND SPECIFICATIONS. "(#)" INDICATES QUANTITY PER LOCATION. "CNR" INDICATES TIE TO BE BENT AROUND CORNER.
- EP** CRACK TO BE EPOXY INJECTED WITH HILTI CI 060 CRACK INJECTION OR PRE-APPROVED EQUIVALENT. (EP) INDICATES CRACK TO BE EPOXYED WHEN CMU INFILL IS REMOVED - WORK NOT INCLUDED IN THIS PHASE.
- WI** EXISTING CMU INFILL BELOW SECOND FLOOR. REPOINT ANY OPEN JOINTS, SEAL CRACKS, AND PAINT CMU WITH THOROSEAL PAINT. SUBMIT PRODUCT DATA AND COLOR FOR OWNER APPROVAL. PAINT AFTER FINAL MASONRY CLEANING. WORK AT UPPER CMU INFILL NOT INCLUDED IN THIS PHASE.
 - o EXISTING SHUTTER PIN. REMOVE RUST SCALE, PRIME WITH RUST-INHIBITIVE ALKYL PRIMER AND TOP COAT WITH BLACK ENAMEL. SUBMIT PRODUCT DATA AND COLOR FOR OWNER APPROVAL.
- SP-B** BROKEN SHUTTER PIN. ADD 1/2 BRICK AND CLEAN AND PAINT REMAINDER.
- L-I** REMOVE AND REPLACE OUTER LINTEL WITH H.D. GALV W8x24. PROVIDE 8" BEARING EACH SIDE. PROVIDE 3/8" WEB STIFFENERS EACH SIDE OF WEB, EACH END, OVER CENTER OF BEARING. PROVIDE 1/2" GALV BEARING PLATE. PROVIDE NEW LEAD FLASHING OVER LINTEL. EXPOSE INNER LINTELS FOR REVIEW BY ENGINEER.
- *** CAST IRON STAR MEDALLION WALL TIE. WORK ASSOCIATED WITH CLEANING, PAINTING, AND TIGHTENING IS NOT INCLUDED IN THIS PHASE. (EXCEPT AS NOTED)
- G-G** EXISTING GAS UTILITY/PIPING. COORDINATE WORK WITH MEP AS REQUIRED TO FACILITATE MASONRY WORK. INFILL AREAS WHERE BEING REMOVED/RELOCATED.
- E** EXISTING ELECTRIC UTILITY. COORDINATE WORK WITH MEP AS REQUIRED TO FACILITATE MASONRY WORK. INFILL AREAS WHERE BEING REMOVED/RELOCATED.
- C-** EXISTING CONDUIT. COORDINATE WORK WITH MEP AS REQUIRED TO FACILITATE MASONRY WORK. INFILL AREAS WHERE BEING REMOVED/RELOCATED.
- F** EXISTING FIRE UTILITY/SPRINKLER. COORDINATE WORK WITH MEP AS REQUIRED TO FACILITATE MASONRY WORK. INFILL AREAS WHERE BEING REMOVED/RELOCATED.
- DS-** EXISTING DOWNSPOUT. COORDINATE WORK AT THIS AREA WITH ARCH AND OWNER.



TYP HELIBAR CRACK STITCHING DETAIL

HELIBAR CRACK STITCHING PROCEDURE:
1. SPLIT AND CRACKED SECTIONS OF MULTI-WYTHE MASONRY SHOWN ON THE DRAWINGS TO BE REINFORCED BY MEANS OF A "CRACK STITCHING" TECHNIQUE SHALL UTILIZE THE 6mm HELIBAR 304 STAINLESS STEEL HELICAL ROD AS MANUFACTURED BY HELIFIX NORTH AMERICA, 110 MAPLECRETE ROAD, CONCORD, ONTARIO, CANADA, 888-992-9989.
2. RAKE OUT OR SAWCUT SLOTS IN THE HORIZONTAL MORTAR JOINTS A MINIMUM OF 20 INCHES EITHER SIDE OF THE CRACK TO THE DEPTH OF 1 1/2 - 2 INCHES.
3. CLEAN OUT THE JOINTS WITH COMPRESSED AIR OR WATER PRIOR TO THE INSTALLATION OF THE CEMENTITIOUS GROUT.
4. INJECT CEMENTITIOUS GROUT INTO THE BACK OF THE JOINT WITH A GROUT GUN.
5. PUSH THE 6mm HELIBAR INTO THE BACK OF THE JOINT. APPLY A BEAD OF GROUT OVER THE EXPOSED HELIBAR AND "IRON" INTO THE JOINT WITH A FINGER TROWEL.
6. REPOINT THE JOINT AND FILL THE VERTICAL CRACK WITH A BOND BREAKER AND URETHANE SEALANT SUCH AS SIKAFLEX-1a. MATCH COLOR.
7. WHERE THE DISTANCE FROM THE CRACK TO A TERMINATION POINT DOES NOT EXCEED 20 INCHES THE HELIBAR IS TO BE BENT 90° AND INSERTED INTO A 6mm DRILLED HOLE TO A DEPTH OF 3 - 4 INCHES PRIOR TO GROUTING.
8. WHERE A CRACK IS LESS THAN 20 INCHES FROM THE END OF A WALL THE HELIBAR SHOULD BE BENT AROUND THE CORNER AND BONDED INTO THE RETURN WALL AT LEAST 6 INCHES.



SOUTHWEST ELEVATION
1/8"=1'-0"

THIS DRAWING IS AN INSTRUMENT OF SERVICE AND SHALL REMAIN THE PROPERTY OF BECKER STRUCTURAL ENGINEERS INC. IT SHALL NOT BE REPRODUCED, COPIED, LENT OR DISPOSED OF DIRECTLY OR INDIRECTLY NOR USED FOR ANY PURPOSE OTHER THAN FOR WHICH IT IS SPECIFICALLY FURNISHED AND MUST BE RETURNED TO BECKER STRUCTURAL ENGINEERS INC. ON COMPLETION OF WORK, IF REQUESTED.

BECKER
Structural Engineers, Inc.
75 New Street
Portland, ME 04101-4701
Tel: 207-875-1832
Fax: 207-875-1822
www.beckerstructural.com



Agreed	
Revised	
Issued For	
Date	
Rev No	

RENOVATIONS TO CUMBERLAND COLD STORAGE BUILDING - PORTLAND, ME
PHASE 2 FAÇADE RESTORATION

Designed	DSB	Scale	AS NOTED
Drawn	DSF	Date	08/27/10
Checked	DSB	Becker Job Number	2314.10

PH2-S1