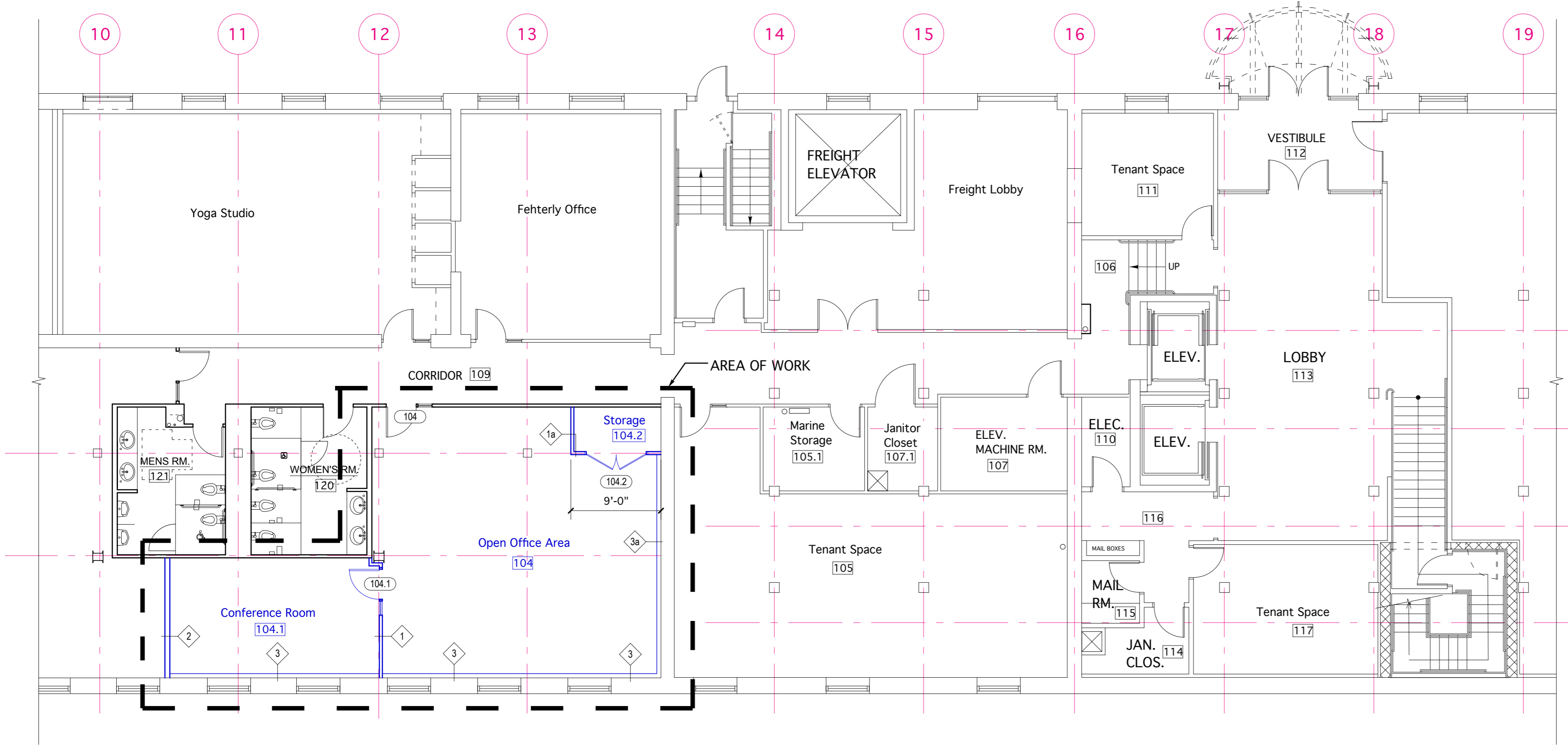
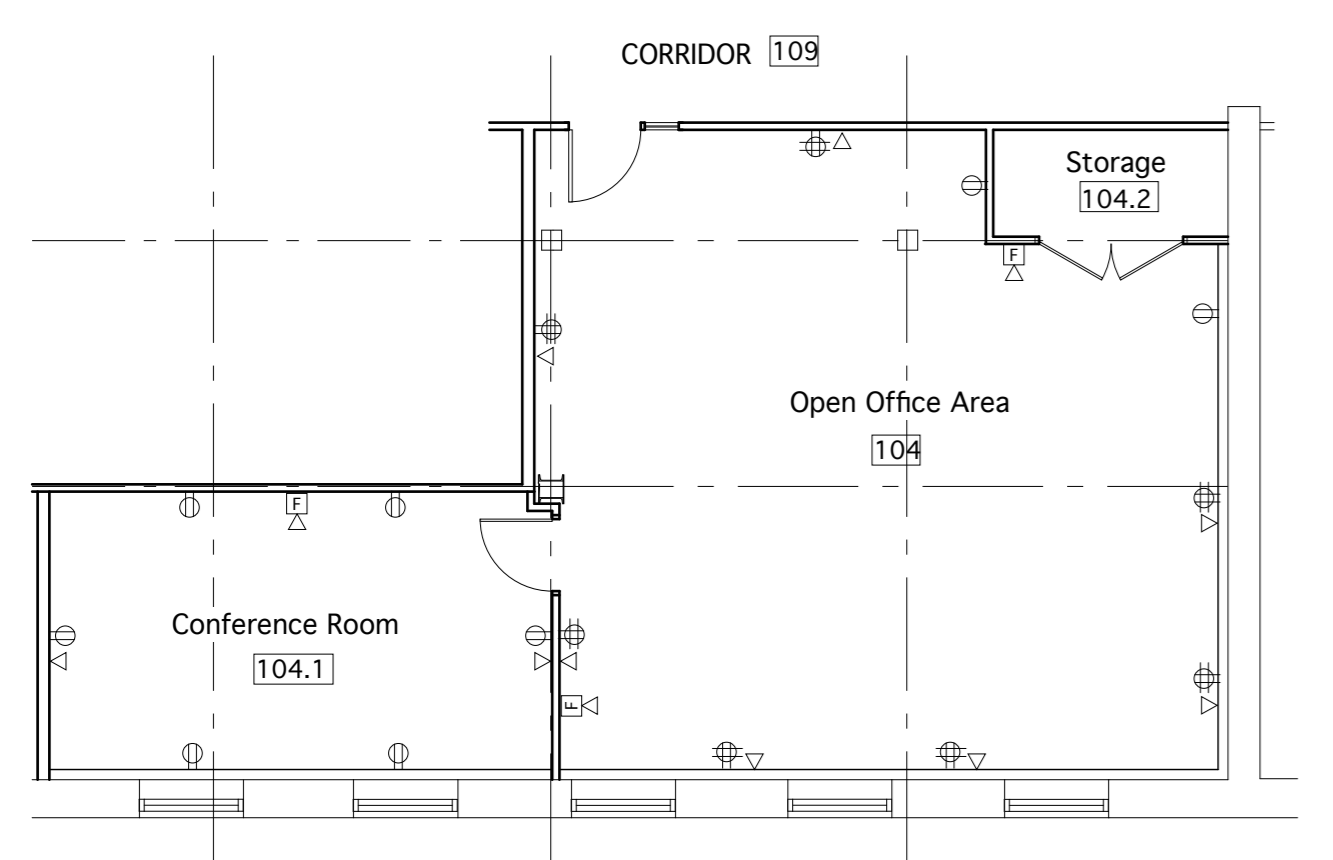


FIRST FLOOR KEY PLAN (Shaded Area = New work to be constructed as part of this project)
Not To Scale

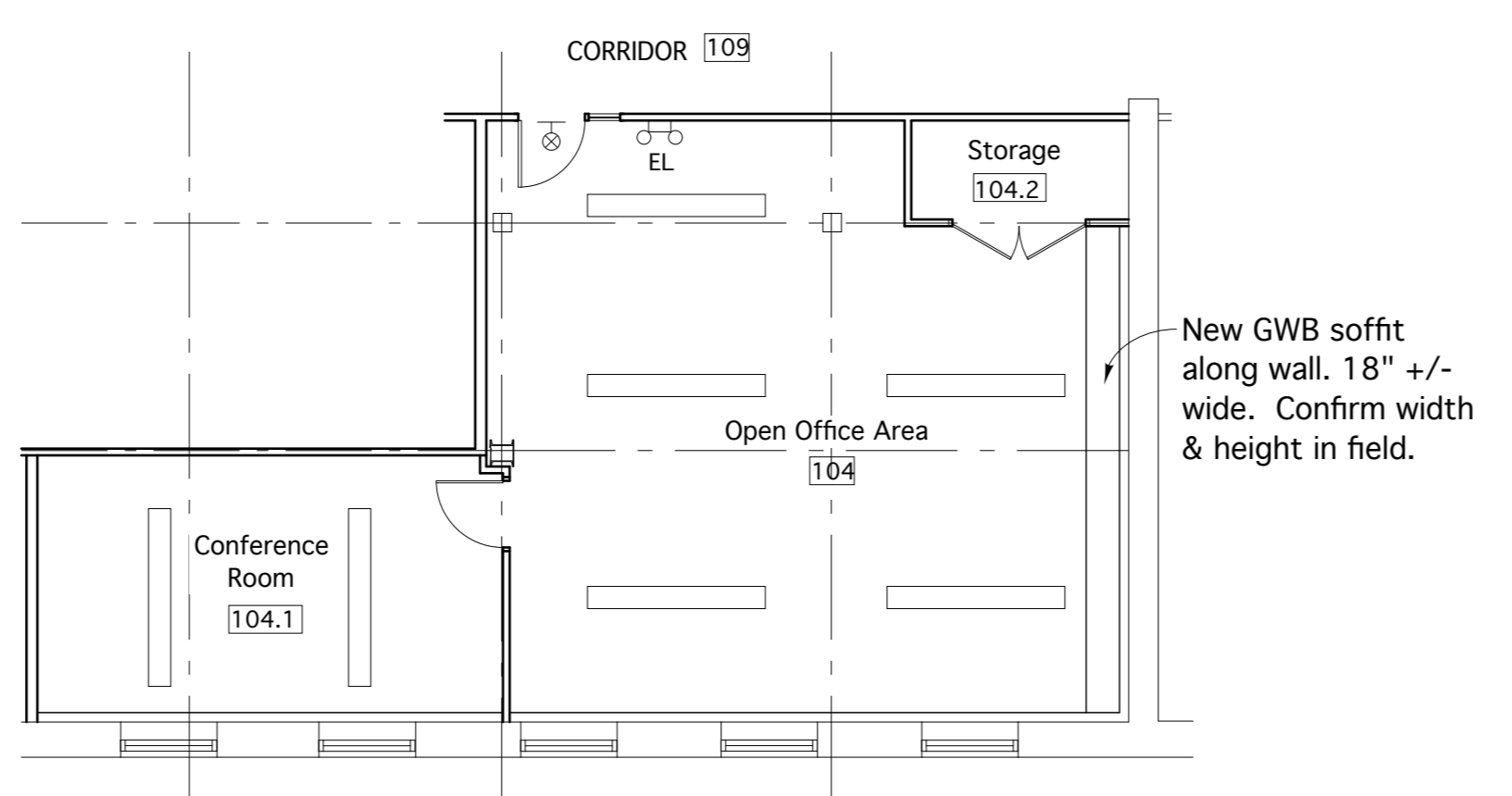
DOOR & FRAME SCHEDULE															
General			Door			Frame			Details						
Door No.	Size (W x H)	Thickness	Material	Finish	Type	Material	Finish	Type	Head	Jamb	Threshold	Hardware	Label	Remarks	
SECOND FLOOR															
104	3'-0" X 7'-0"	1 3/4"	Exist	Exist	B	Exist	Exist	F2	Exist	Exist	--	Exist	Exist	Exist	
104.1	3'-0" X 7'-0"	1 3/4"	SCWD	Clr. F.	B	HM	Pld	F2	H1	J1	--	Lockset	--	ADA Hdw	
104.2	PR 3'-0" X 7'-0"	1 3/4"	SCWD	Clr. F.	A	HM	Pld	F1	H1	J1	--	Passageset	--	ADA Hdw	



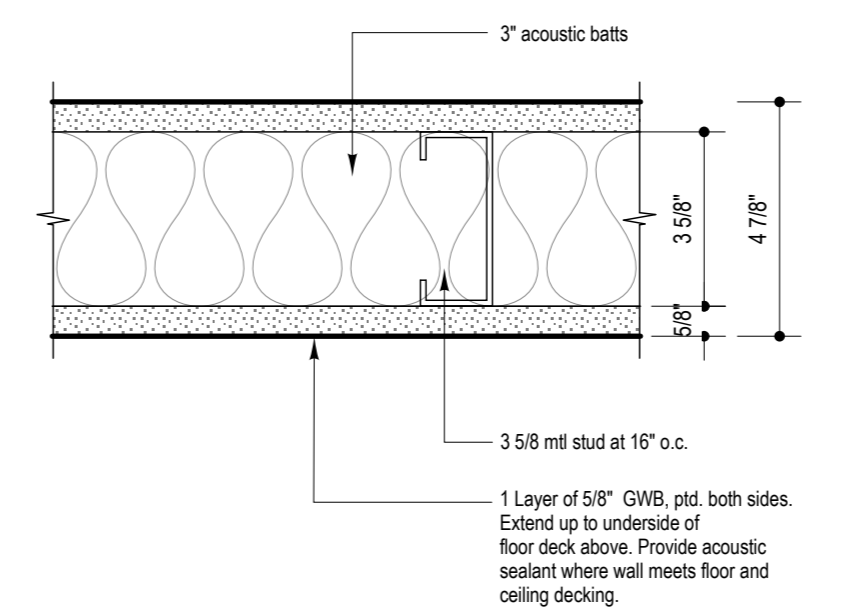
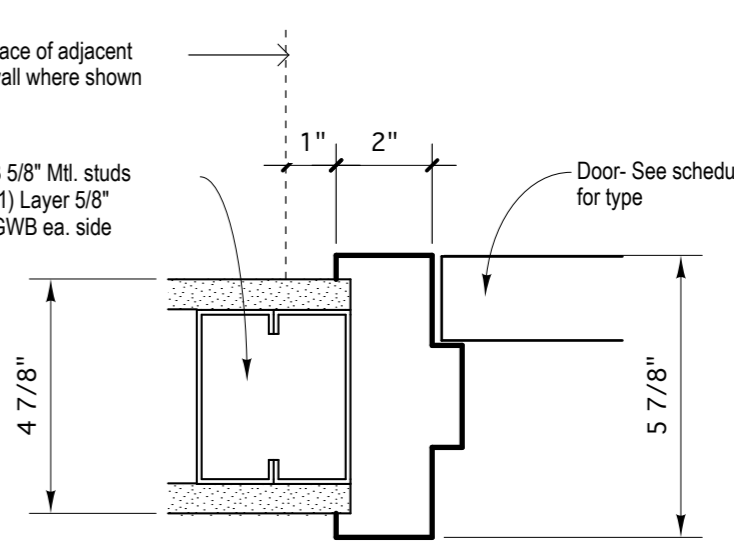
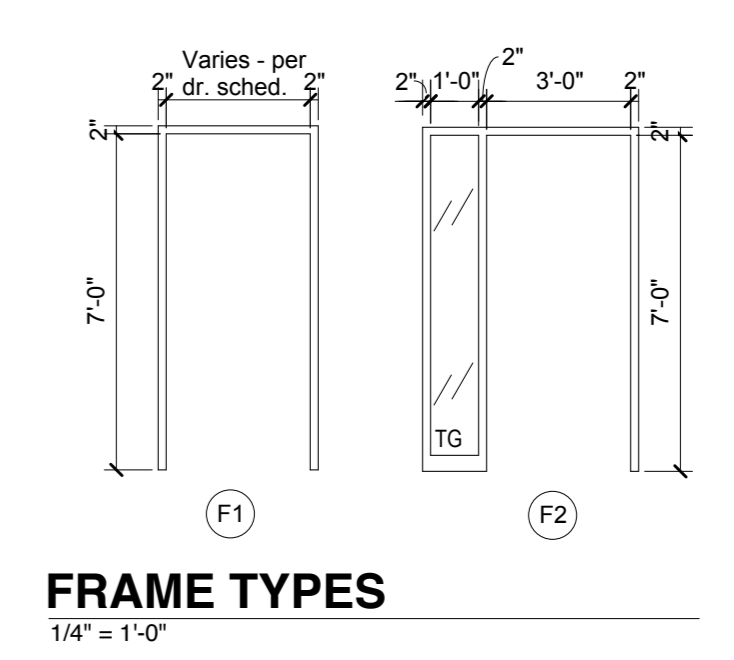
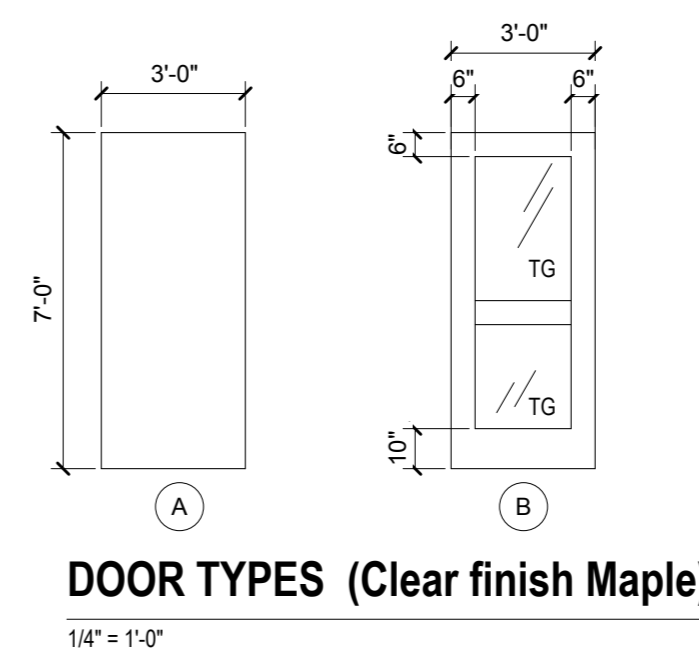
FIRST FLOOR LAYOUT PLAN
1/8" = 1'-0"



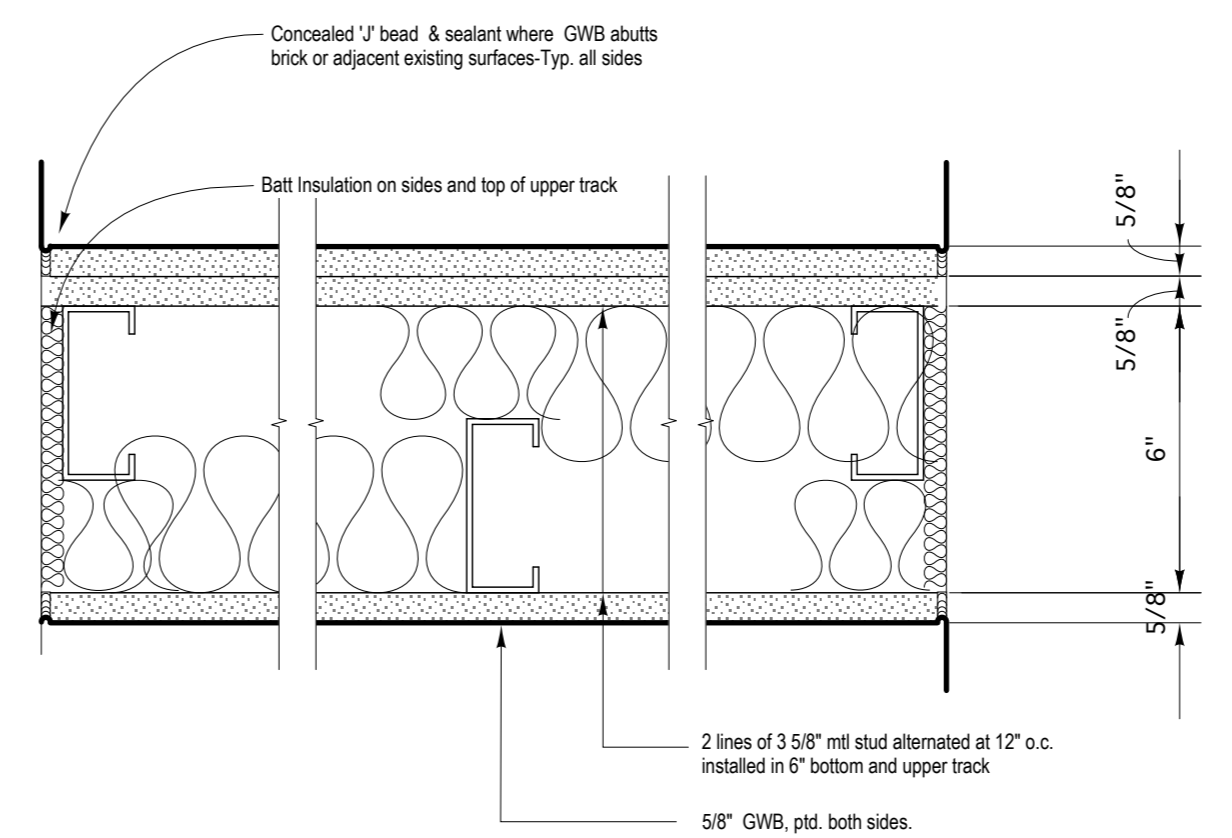
FIRST FLOOR POWER PLAN
1/8" = 1'-0"



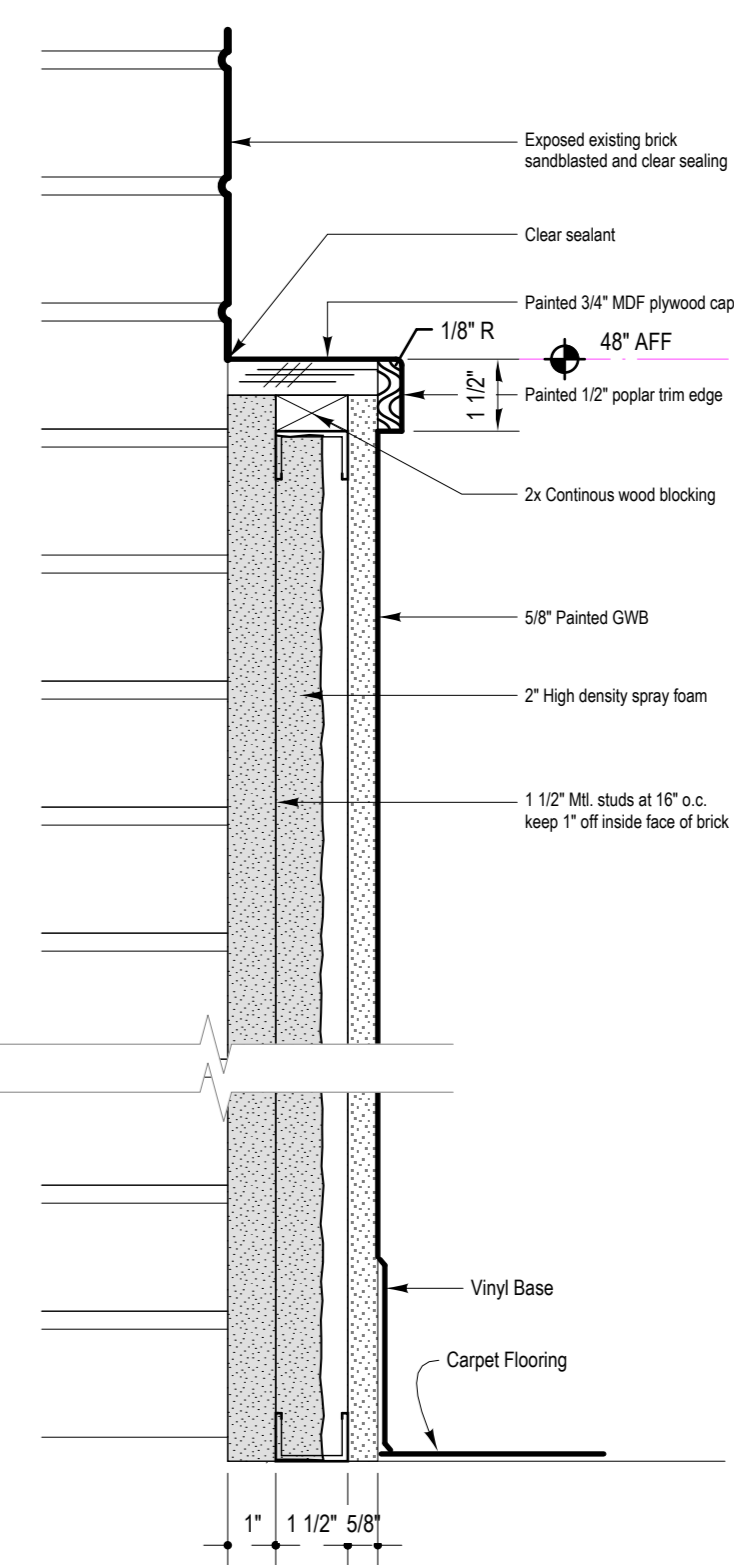
FIRST FLOOR LIGHTING PLAN OPTION B
1/8" = 1'-0"



- 1 3 5/8" Metal Stud Partition As shown
- 1a 3 5/8" Metal Stud Partition Same as "1" except omit batt insulation



- 2 6" Acoustical Partition As shown



- 3 Exterior Wall Finish at First Floor +/- 3' high - coordinate with Owner
- 3a Same as Type 3 except batt insulation in lieu of foam +/- 3' high - coordinate with Owner

MERRILL'S WHARF
First Floor Fit Up Project
254 Commercial Street, Portland, Maine

Winton Scott Architects
5 Milk St. Portland, ME 04101
207.774.6680 | wintonscott.com

Mechanical Systems Engineers
Royal River Center #10
10 Forest Falls Dr., Yarmouth, ME 04096
207.846.1441 |

Bartlett Design
942 Washington St., Bath, ME 04530
207.443.5447 | bartlettdesigninc@comcast.net>

SCALE: AS NOTED

FIRST FLOOR PLAN

A1.1

December 11, 2012