

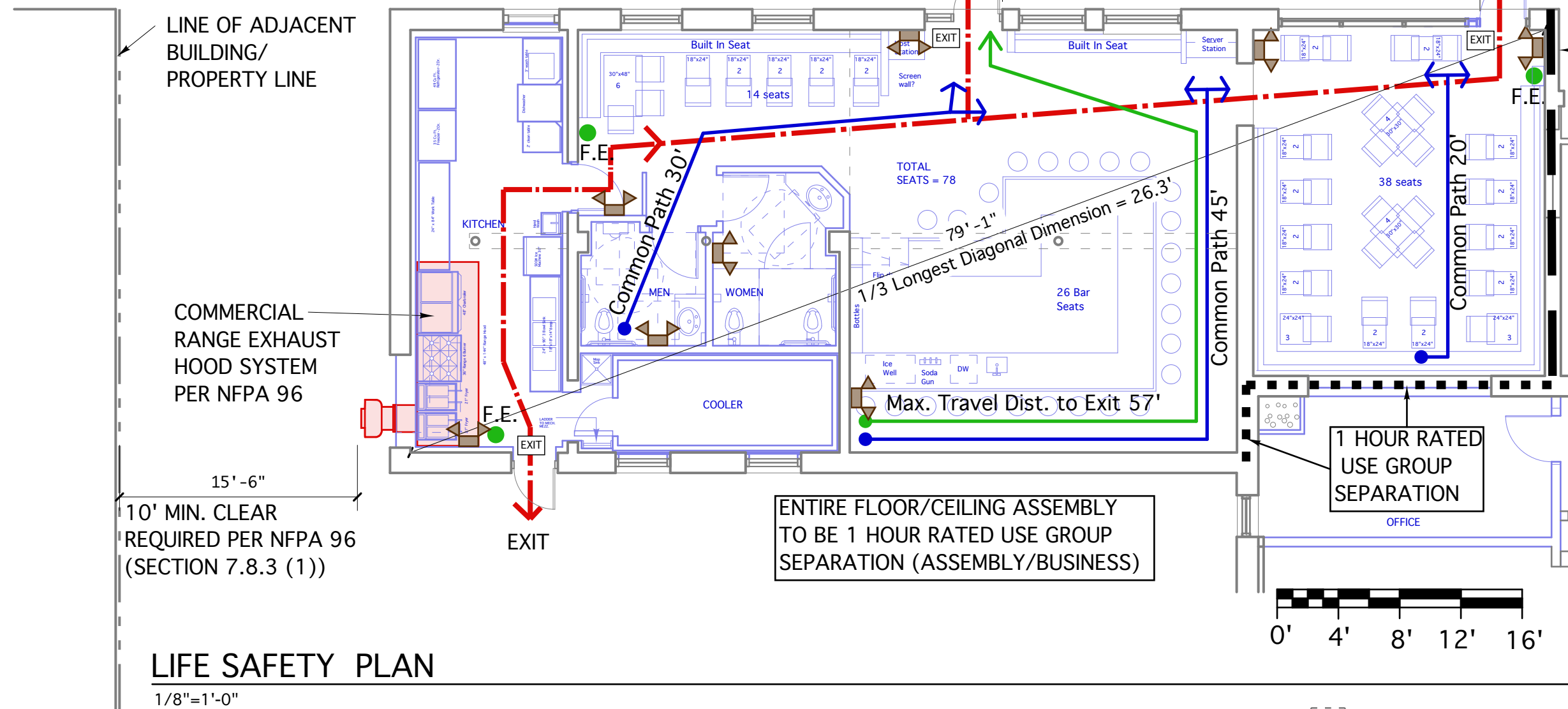
FIRST FLOOR KEY PLAN (Shaded Area = New work to be constructed as part of this project)

Not To Scale

CODE SUMMARY:

2009 - NFPA 101 / 2009 - IBC

- Work Area Square Footage: 1,952 S.F.
- Building Fire Safety Features: Automatic supervised sprinkler, detection, & alarm systems installed.
- Construction Type: IBC: Type IIIB, NFPA: Type III (200)
- Tenant Use Group: IBC: Assembly (A2-Restaurant) / NFPA: Assembly
- Occupant Load Factor: Dining Areas: 15 S.F./person; 1,065/15 = 71 People
Kitchen/Bar/Toilets: 100 S.F./person; 816/100 = 9 People
TOTAL CALCULATED OCCUPANT LOAD = 80 People
ACTUAL PLANNED OCCUPANT LOAD= 78 Customers+6 staff=84
- Required Occupancy Separation (Business Use above & adjacent):
-Per IBC Table 508.4 - 1 Hour separation required (sprinkled building)
-Per IBC Table 508.4, Footnote D, No separation is required between the kitchen & dining areas.
-Per NFPA Table 6.1.14.4.1(b) - 1 Hour separation required (sprinkled building)
-Per NFPA 12.7.2.3 - Rated separation between kitchen and dining area not required.
- Egress: Per NFPA 7.4.1.1, minimum of two exits required. Dining area has two separate exits; Kitchen has two separate exits, one directly to exterior, one exits through dining area. Each 36" Exit Door provides a 34" clear opening. Per NFPA Table 7.3.3.1 Capacity Factors, the capacity factor for an exit door is .2" per person. 34"/.2" = 170 person egress capacity per door.
- Minimum Distance Between Exits: Per NFPA 7.5.1.3.3, In sprinkled buildings, the minimum distance between exits shall be not less than 1/3 the maximum overall diagonal dimension of the area served. See Life Safety Plan.
- Maximum Common Path of Travel: Per NFPA 12.2.5.1.2, Common Path of Travel of 20' is permitted when the path serves any number of people. A Common Path of 75' is permitted when the path serves less than 50 people.
- Maximum Dead End Corridor: Per NFPA 12.2.5.1.3, Maximum allowable dead end corridor is 20' (Not Applicable).
- Maximum Travel Distance to Exit: Per NFPA Table A.7.6, sprinklered building, Maximum distance to exit is 250'.

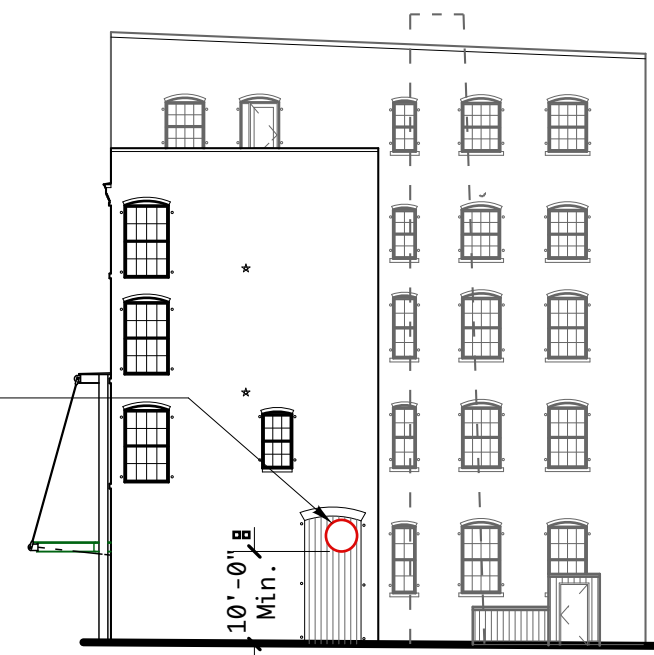


LIFE SAFETY PLAN

1/8"=1'-0"

10' MIN. CLEAR FROM BOTTOM OF HOOD EXHAUST FAN TO GRADE REQUIRED PER NFPA 96 (SECTION 7.8.3 (1)).

NFPA 96, FIGURE 7.8.3 DESCRIBES NECESSARY CLEARANCE FROM EXHAUST UNIT TO ADJACENT AIR INTAKES OR OPERABLE WINDOWS. ALL WINDOWS IN THE BUILDING ARE FIXED UNITS THAT DO NOT OPEN SO CLEARANCE REQUIREMENTS ARE MET.



NORTH ELEVATION

NOT TO SCALE



5 Milk Street
Portland, Maine 04101
207 774 4811
www.wintonscott.com



Winton Scott

KING'S HEAD Tenant Fit Up

Merrill's Wharf
Portland, Maine

REVISIONS
5/9/13
6/8/13

PERMIT DOCUMENTS
JUNE 8, 2013

Key Plan & Code
Summary
Scale: As Noted