

- General Mechanical Notes
1. Refrigerant piping shall be run in the existing refrigerant pipe chase, run for future use a set of refrigerant pipes changed with a holding charge.
 2. The duct shall run under the refrigerant pipe chase.
 3. Gases, registers and diffusers shall be light and cooling or equal Model VAD, RFF45 and RFF45.
 4. Supply air and outside air make ductwork shall be insulated with 1" thick fibreglass ductwrap w/ R5K.

ERV PERFORMANCE SCHEDULE

TAG	AERIOU (CFM)	ESP (in wd)	FAN HP	VOLTAGE	EFFECTIVENESS (WINTER)	BASIS OF DESIGN Requirement	
						SEER WEIGHT (LBS)	MODEL
TA6	295	0.5	1/4	120/1	16%	FILTERS	MODEL EY200
						VENTILATION	

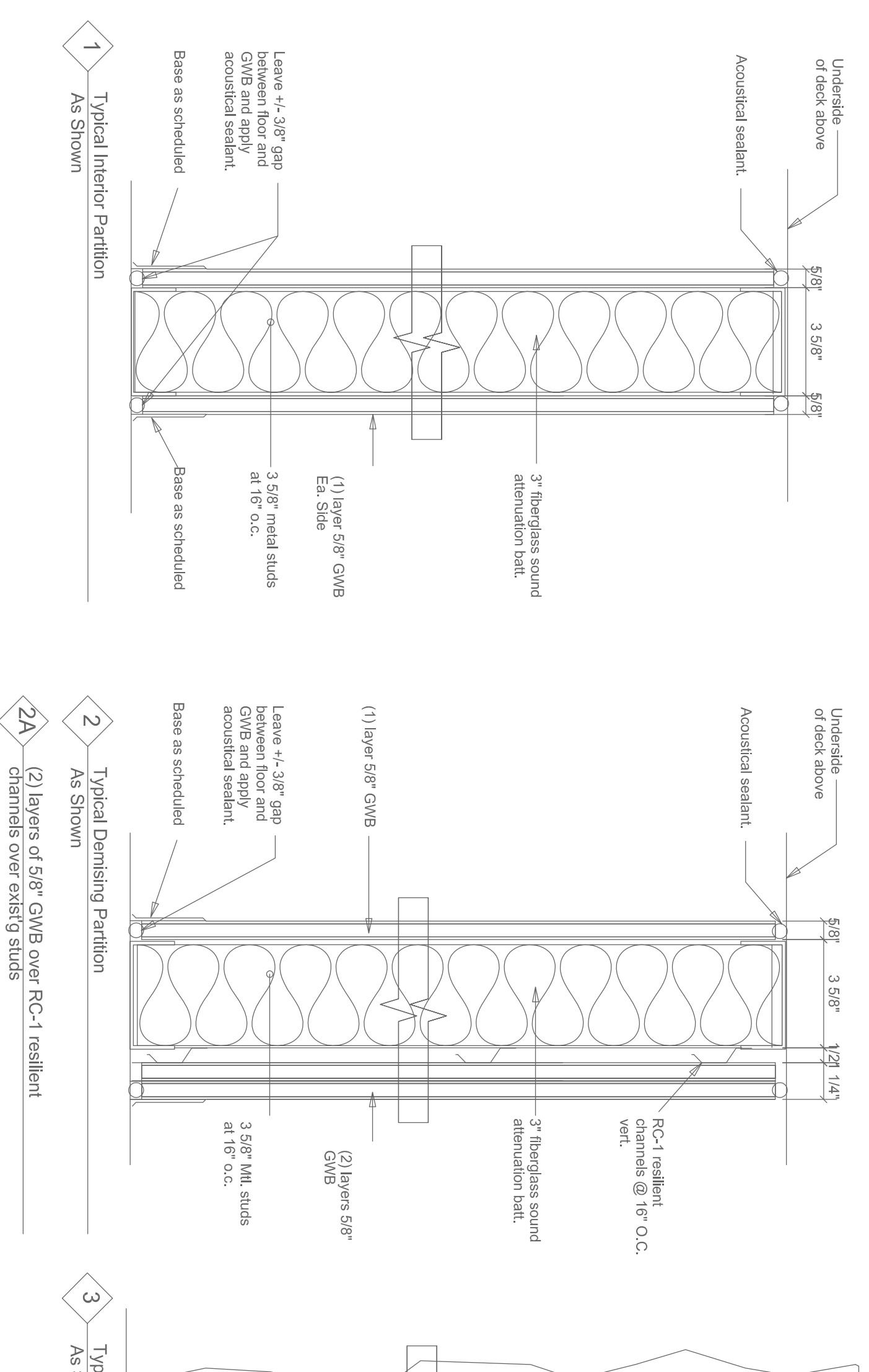
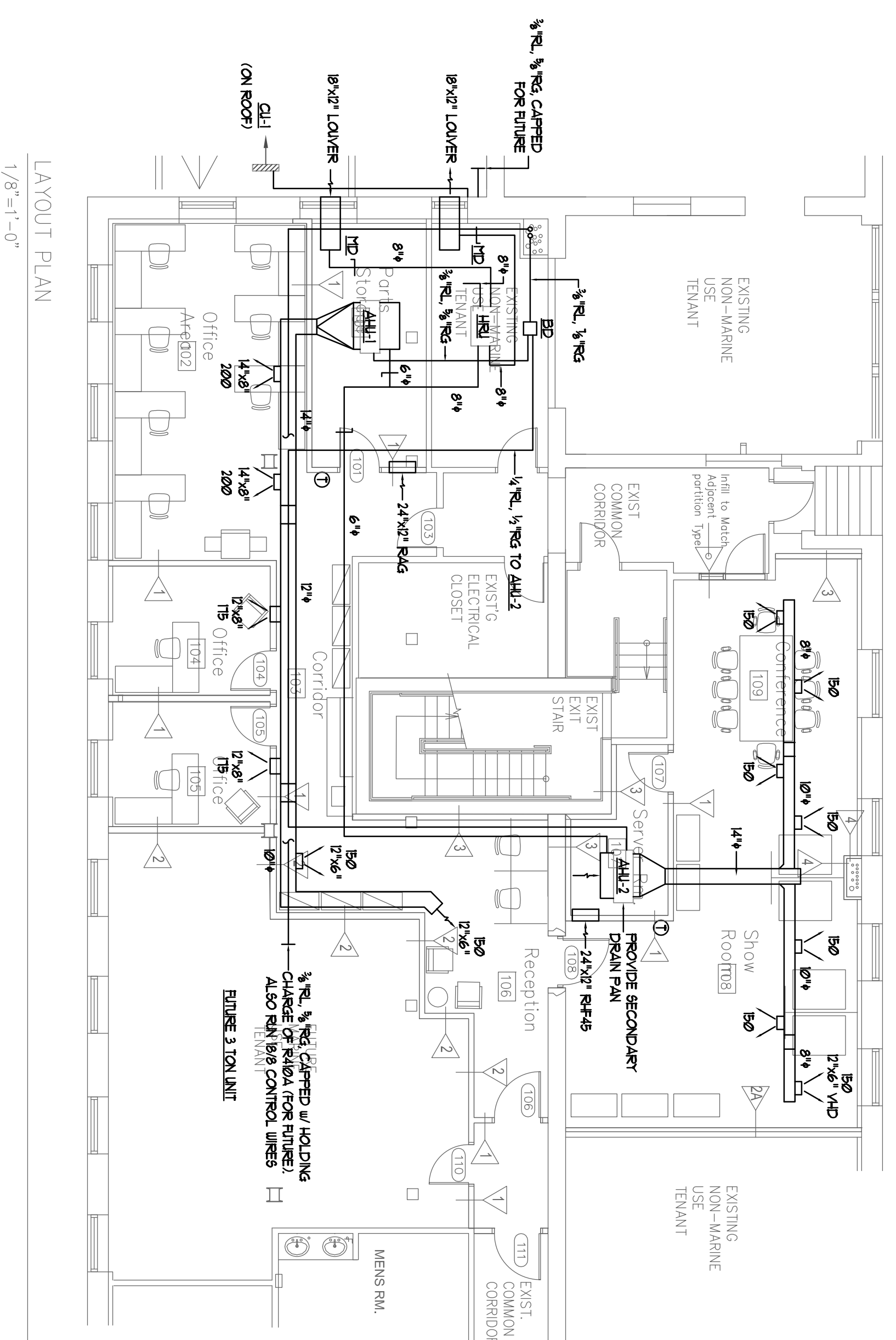
SPLIT-SYSTEM AIR CONDITIONER PERFORMANCE SCHEDULE

TAG	TOTAL COOLING (TBLU)	AERIOU (CFM)	MOISTURE REMOVAL (PINTS/HR)	COND DRAIN (IN)	ERV UNIT (LBS)	COND RATING (LBS)	WEIGHT (LBS)	REFRIGERANT PIPE SIZE (IN)		ELECTRICAL REQUIREMENTS		BASIS OF DESIGN LG	
								LIQUID	GAS	NCA MAX FUSE	V/F/Hz	SCAND (BEL)	SERVICE
AHU-1	36.0	993	-	1"	-	40	91	3/4	1/2	1.4	5.0	200/160	OFFICES
AHU-2	24.0	618	-	1"	-	40	80	3/4	1/2	1.0	5.0	200/160	OFFICES

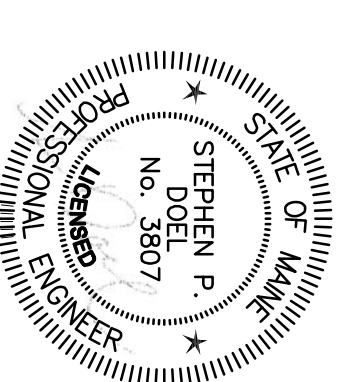
SPLIT-SYSTEM CONDENSING UNIT PERFORMANCE SCHEDULE

TAG	TOTAL COOLING (TBLU)	REFRIGERANT	SEER	MINIMUM AMBIENT TEMP (F)	SCAND (INCHES)	OPERATING HEIGHT (LBS)	ELECTRICAL REQUIREMENTS	BASIS OF DESIGN LG	
								SCAND (BEL)	SERVICE
CU-1	54.0	R-410A	13.1	0"	37x3	163	3/4 .4	40.0	200/160

.. AT ARI CONDITIONS OF 95°F AMBIENT / 61°F INDOOR WB
 .. AT 45°F SATURATED SUCTON TEMPERATURE



Atlantic Comfort Systems, Inc.
 Mechanical Contractor • 207-284-4390
 882 Hill Street, Biddeford, ME 04005
 www.atlanticcomfort.com



Revisions
 8/23/2013 - FOR PERMIT.

Ricoh Offices Fit-Up
 Merrill's Wharf
 Portland, ME

BENNETT ENGINEERING
 MECHANICAL • ELECTRICAL
 (207) 865-9475

Job No.: 3489
 Date: 8/23/13
 Scale: 1/8" = 1'-0" or A.N.
 Drawn by: SF Doel
 Checked by: SF Doel
 Drawing Title:
 HVAC Plan

M.1