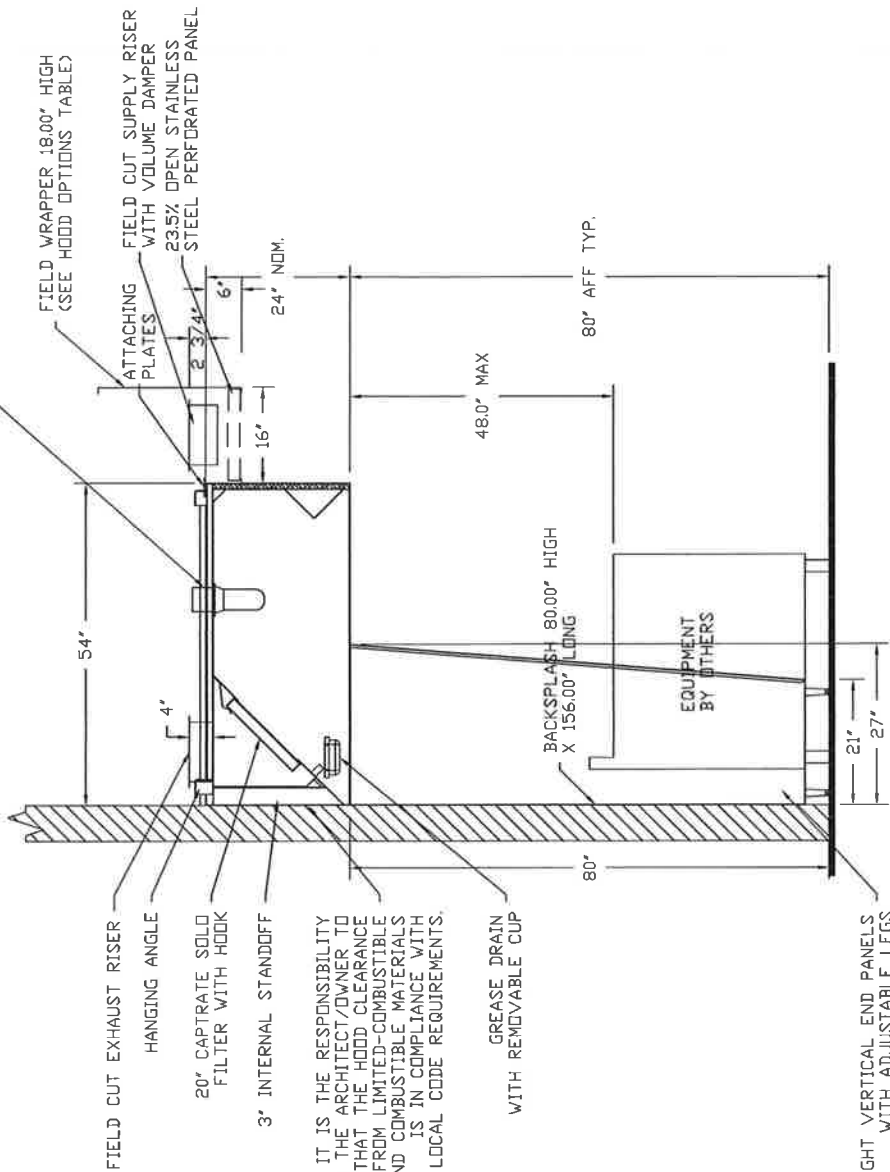


Page 8 - Hood Spec - 254 Commercial St.

SCREW IN COMPACT FLUORESCENT BULB, INCANDESCENT LIGHT FIXTURE-HIGH TEMP ASSEMBLY, INCLUDES CLEAR THERMAL AND SHOCK RESISTANT GLOBE



IT IS THE RESPONSIBILITY OF THE ARCHITECT/DOWNER TO ENSURE THAT THE HOOD CLEARANCE FROM LIMITED-COMBUSTIBLE AND COMBUSTIBLE MATERIALS IS IN COMPLIANCE WITH LOCAL CODE REQUIREMENTS.

SECTION VIEW -- MODEL 5424ND-2--PSP-F HOOD -- #1

LEFT AND RIGHT VERTICAL END PANELS WITH ADJUSTABLE LEGS

CUSTOMER APPROVAL TO MANUFACTURE:

Approved as Noted

Approved with NO Exception Taken

Revise and Resubmit

SIGNATURE \_\_\_\_\_ Date \_\_\_\_\_

Your Title \_\_\_\_\_





**CAPTIVEAIRE**

JOB Commercial St - Portland, ME (heated) r1	
LOCATION	Lewiston, ME
DATE	11/14/2013
DWG #	2
REV.	SCALE 3/8" = 1'-0"
JOB #	1912251
DRAWN BY	BFC-21