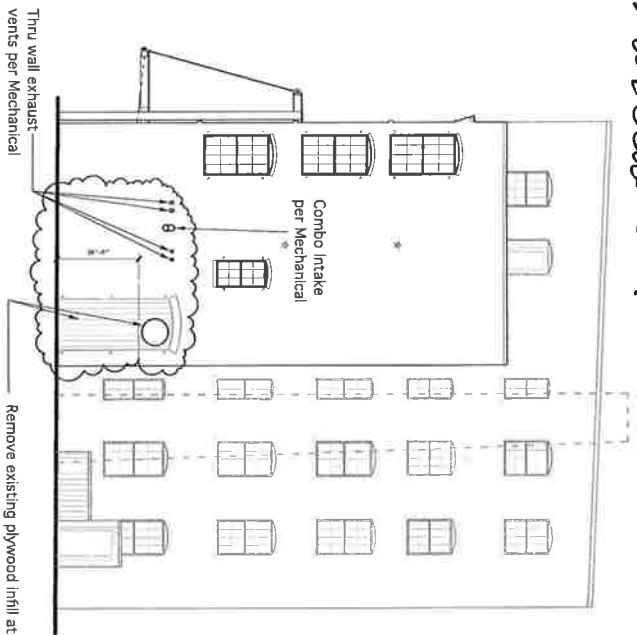


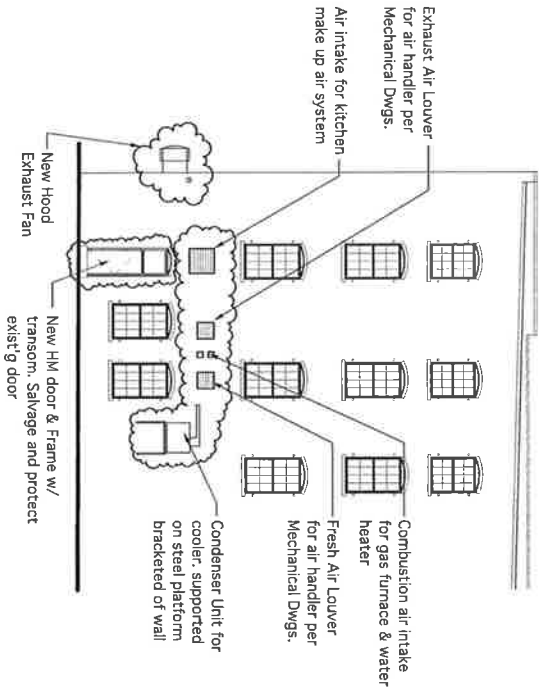
PARTIAL EAST ELEVATION

Scale: 3/32" = 1'-0"



NORTH ELEVATION

Scale: 3/32" = 1'-0"



PARTIAL WEST ELEVATION

Scale: 3/32" = 1'-0"



WISA  
WINTON SCOTT ARCHITECTS

5 Milk Street  
Portland, Maine 04101  
207.774.4811  
www.wintonscott.com



KING'S HEAD  
Tenant Fit Up

Merrill's Wharf  
Portland, Maine

REVISIONS  
5/9/13  
6/8/13

PERMIT DOCUMENTS  
JUNE 8, 2013

Exterior Elevations  
Scale: As Noted

A 801