

PROJECT

WELLS FARGO

254 COMMERCIAL STREET
PORTLAND, ME 04101

ARCHITECT

THE SWITZER GROUP

3 EAST 54th STREET, 7th FLOOR
NEW YORK, NY 11022
Project Principal: KENT HIKIDA
T. 212.922.1313

CONSULTANTS

MEP
MECHANICAL SYSTEMS ENGINEERS
KURT MAGNUSSON
10 FOREST FALLS DRIVE
YARMOUTH, ME 04096 SUITE 10B
207-846-1441 X202

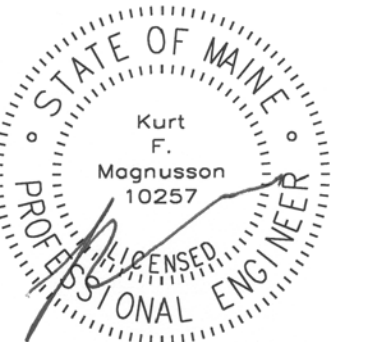
ELECTRICAL ENGINEER
BARTLETT DESIGN, INC.
LARRY BARTLETT
942 WASHINGTON STREET
BATH, ME 04530
207-443-5447

ARCHITECT OF RECORD
TOMI KENT HIKIDA, AIA
c/o The Switzer Group, Inc.
3 East 54th Street
New York, NY 10022
T: 212.922.1313
State of Maine License No. ARC4456

DEPARTMENT OF BUILDINGS SCAN

FOR CONSTRUCTION
10/06/2017

SEAL



ISSUE

No.	Rev.	Issued for	Date
1		LANDLORD REVIEW	09.18.17
2		UPDATED REVIEW	09.25.17
3		ISSUED FOR CONSTRUCTION	10.06.17

PROJECT NUMBER

116145.00

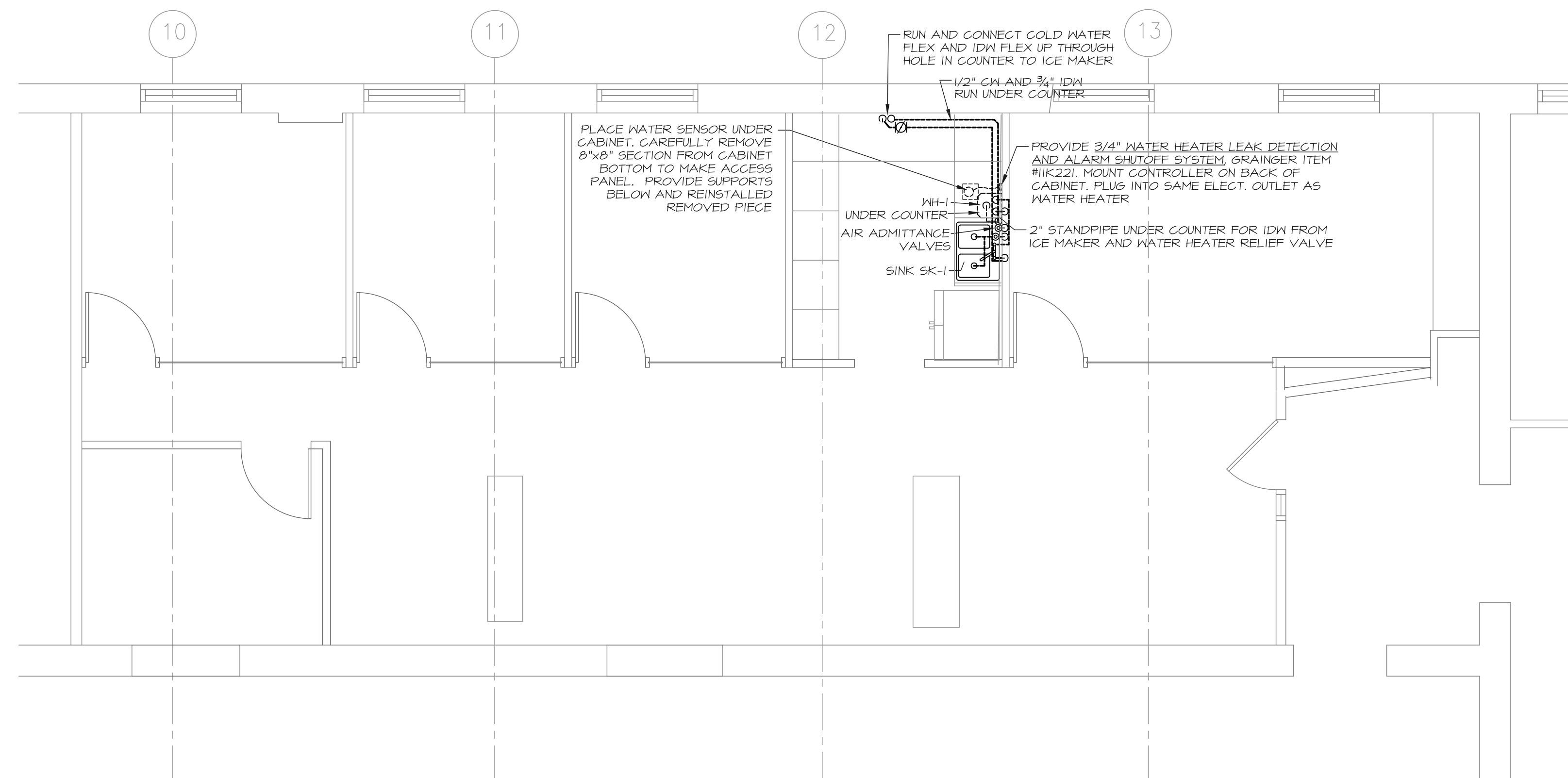
SHEET TITLE

**PLUMBING
FLOOR
PLANS**

SHEET NUMBER

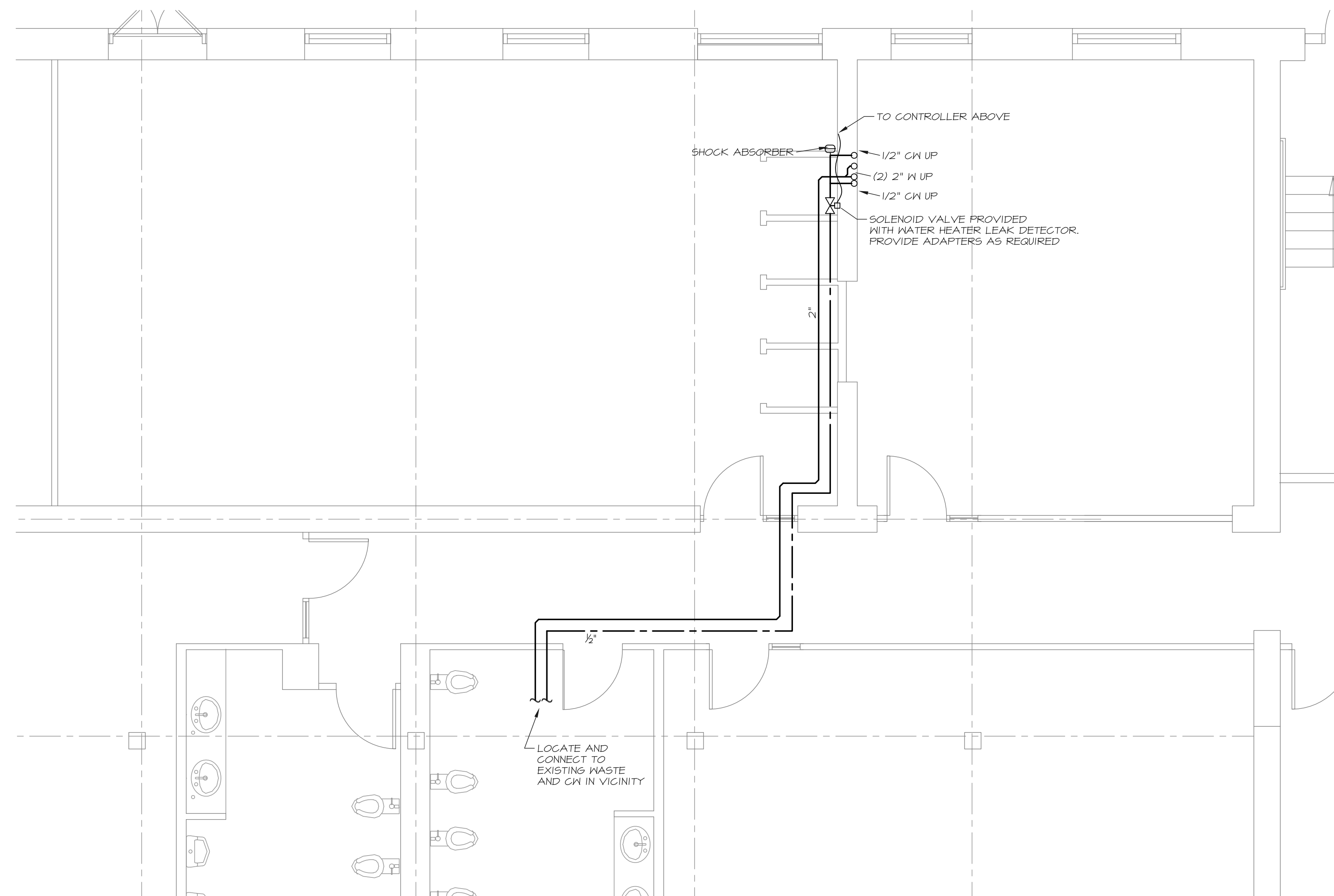
P1

© 2017 The Switzer Group, Inc.



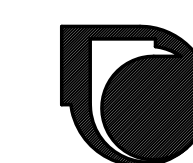
SECOND FLOOR PLAN

SCALE: 1/4" = 1'-0"



FIRST FLOOR PLAN

SCALE: 1/4" = 1'-0"



MECHANICAL SYSTEMS ENGINEERS
ROYAL RIVER CENTER, UNIT 108
10 FOREST FALLS DRIVE, YARMOUTH, MAINE 04096
(207) 846-1441
FACEBOOK: MECHANICAL SYSTEMS ENGINEERS
© COPYRIGHT 2017
M.S.E. Proj. 1728

