

PROJECT

**WELLS FARGO**

254 COMMERCIAL STREET  
PORTLAND, ME 04101

ARCHITECT

**THE SWITZER GROUP**

3 EAST 54TH STREET, 7TH FLOOR  
NEW YORK, NY 10022  
Project Principal: KENT HIKIDA  
T. 212.922.1313

CONSULTANTS

MEP  
MECHANICAL SYSTEMS ENGINEERS  
KURT MAGNUSSON  
10 FOREST FALLS DRIVE  
YARMOUTH, ME 04096 SUITE 10B  
207-846-1441 X202

ELECTRICAL ENGINEER  
BARTLETT DESIGN, INC.  
LARRY BARTLETT  
942 WASHINGTON STREET  
BATH, ME 04530  
207-443-5447

ARCHITECT OF RECORD  
TOMI KENT HIKIDA, AIA  
c/o The Switzer Group, Inc.  
3 East 54th Street  
New York, NY 10022  
T: 212.922.1313  
State of Maine License No. ARC4456

DEPARTMENT OF BUILDINGS SCAN

**FOR CONSTRUCTION**  
**10/06/2017**

SEAL



ISSUE

No.	Rev.	Issued for	Date
1		LANDLORD REVIEW	09.18.17
2		UPDATED REVIEW	09.25.17
3		ISSUED FOR CONSTRUCTION	10.06.17

PROJECT NUMBER

**116145.00**

SHEET TITLE

**MECHANICAL  
FLOOR  
PLAN**

SHEET NUMBER

**M1**

© 2017 The Switzer Group, Inc.

**DAIKIN AC** Submittal Data Sheet

Project Name: Wells Fargo  
Location:  
Engineer:  
Submitted by:  
Revision:

Approved:  
Date:  
Checked by:  
Unit #:  
Drawing #:

**Performance**

Indoor Unit Model No.:	AH-229	Indoor Unit Type:	Mini Split
Outdoor Unit Model No.:	32011R201	Outdoor Unit Type:	SM 1831 Mini Split
Capacity (Cooling):	12.000	Capacity (Cooling):	12.000
Capacity (Heating):	12.000	Capacity (Heating):	12.000

**Dimensions - Cooling Unit**

Power Supply Connection:	208-230/1Ph	Refrigerant:	R410A
Min. Circuit Amps (MCA):	11.1	Refrigerant Charge (lb):	11.1
Max. Circuit Amps (MCA):	15.0	Refrigerant Charge (kg):	5.0
Capacity (Cooling):	12.000	Refrigerant Charge (lb):	11.1
Capacity (Heating):	12.000	Refrigerant Charge (kg):	5.0

**DAIKIN AC** Submittal Data Sheet

Project Name:  
Location:  
Engineer:  
Submitted by:  
Revision:

Approved:  
Date:  
Checked by:  
Unit #:  
Drawing #:

**Dimensions - Indoor Unit**

**AH-229**

Indoor Unit Type: Mini Split

Capacity (Cooling): 12.000

Capacity (Heating): 12.000

Refrigerant: R410A

Refrigerant Charge (lb): 11.1

Refrigerant Charge (kg): 5.0

**DAIKIN AC** Submittal Data Sheet

Project Name:  
Location:  
Engineer:  
Submitted by:  
Revision:

Approved:  
Date:  
Checked by:  
Unit #:  
Drawing #:

**Dimensions - Condensing Unit**

**OU-229**

Outdoor Unit Type: SM 1831 Mini Split

Capacity (Cooling): 12.000

Capacity (Heating): 12.000

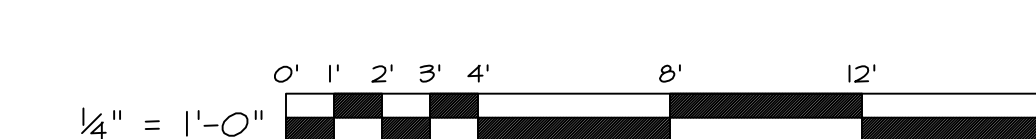
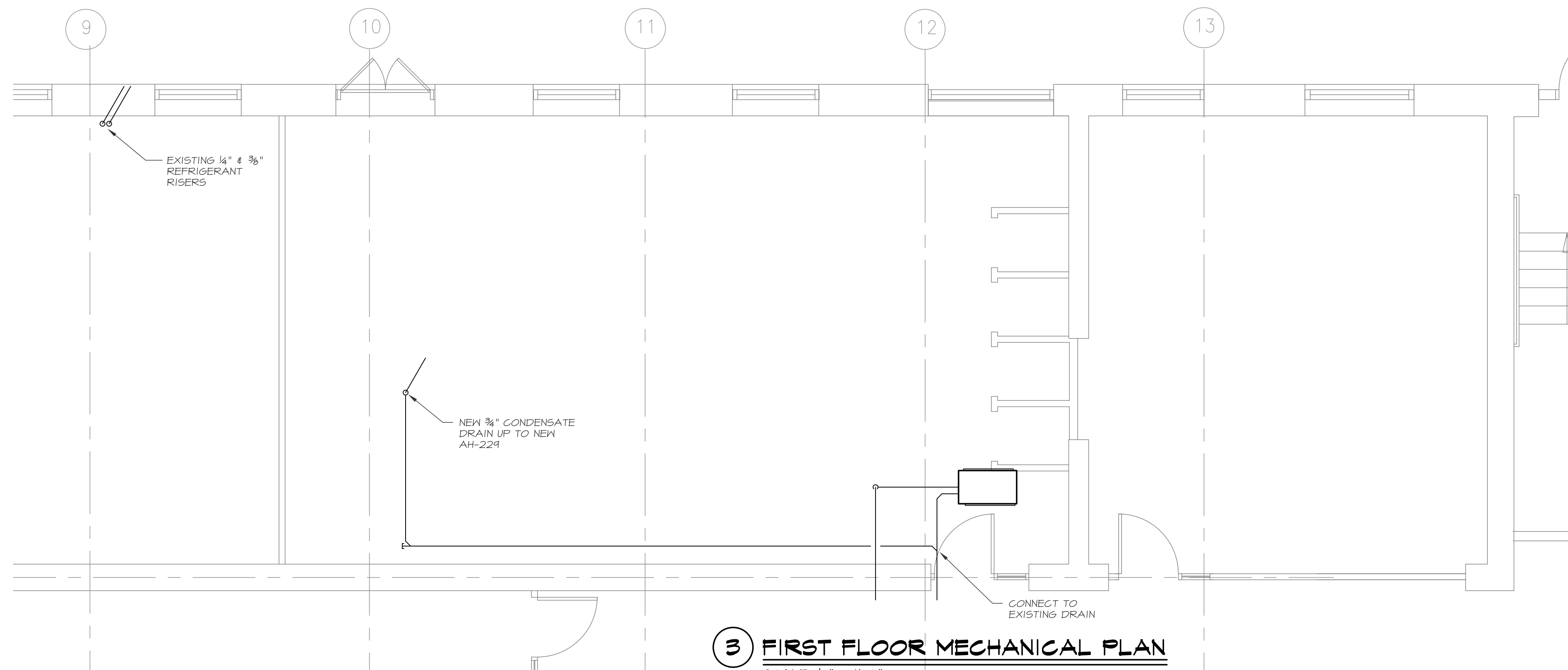
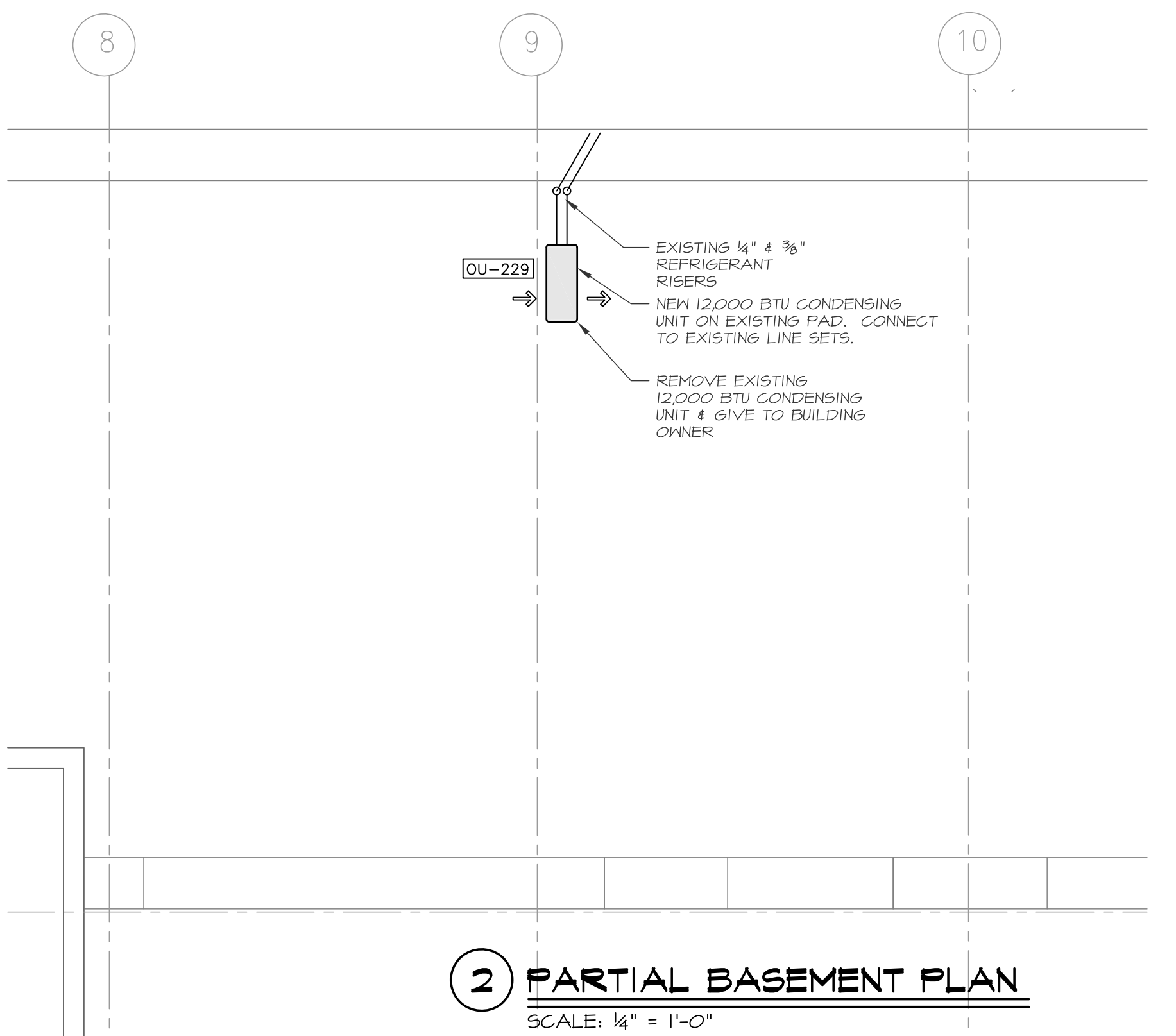
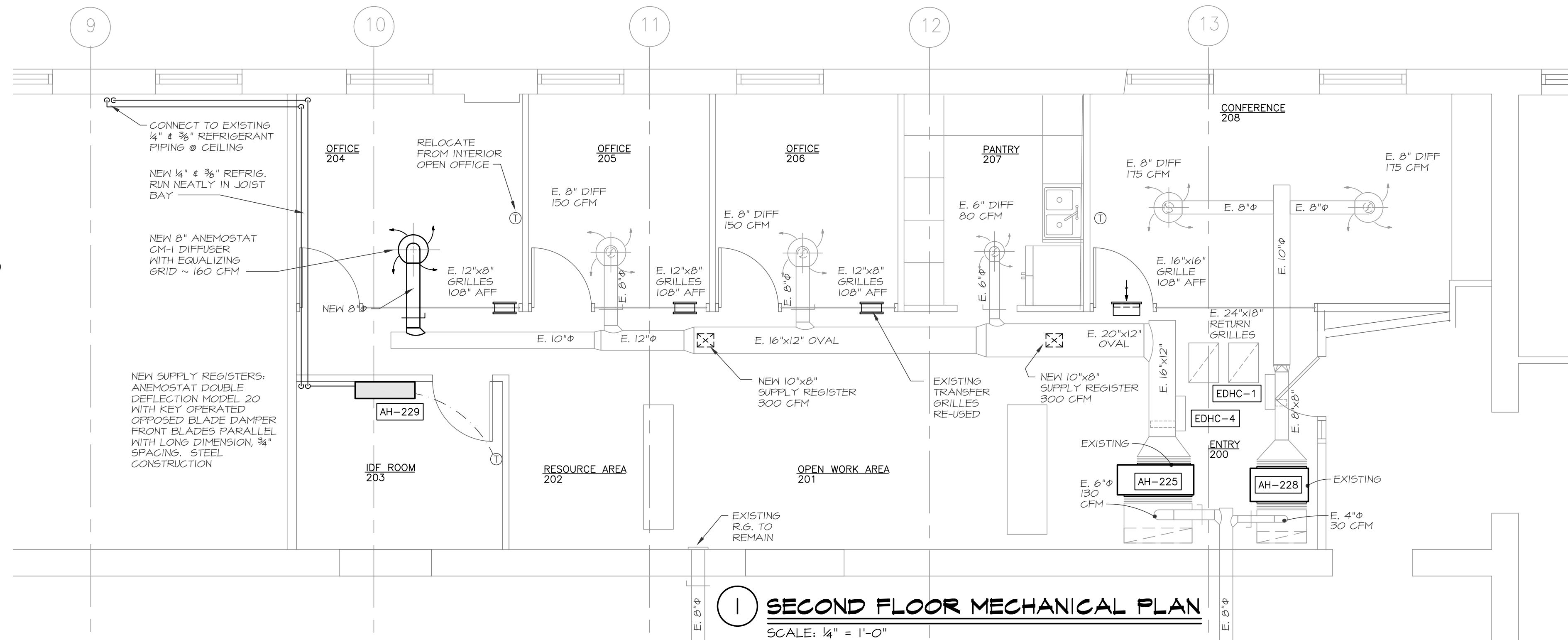
Refrigerant: R410A

Refrigerant Charge (lb): 11.1

Refrigerant Charge (kg): 5.0

COVER NEW PORTIONS OF REFRIGERANT PIPING WITH 1 INCH CLOSED CELL ELASTOMERIC THERMAL INSULATION 25/50 RATED WHEN TESTED IN ACCORDANCE WITH ASTM E84. ARMAFLEX OR EQUAL.

ENGAGE THE SERVICES OF A NEBB CERTIFIED TESTING AND BALANCING CONTRACTOR TO MEASURE AND ADJUST AIR VOLUMES AT DIFFUSERS & REGISTERS ASSOCIATED WITH AH-225 TO VALUES INDICATED.



**MECHANICAL SYSTEMS ENGINEERS**  
ROYAL RIVER CENTER UNIT 108  
10 FOREST FALLS DRIVE, YARMOUTH, MAINE 04096  
(207) 846-1441  
FACEBOOK: MECHANICAL SYSTEMS ENGINEERS  
© COPYRIGHT 2017  
M.S.E. Proj. 1728

