

PROJECT

WELLS FARGO

254 COMMERCIAL ST. SECOND FLOOR
PORTLAND, ME 04101

ARCHITECT

THE SWITZER GROUP

3 EAST 54th STREET, 7th FLOOR
NEW YORK, NY 11022
Project Principal: KENT HIKIDA
T. 212.922.1313

CONSULTANTS

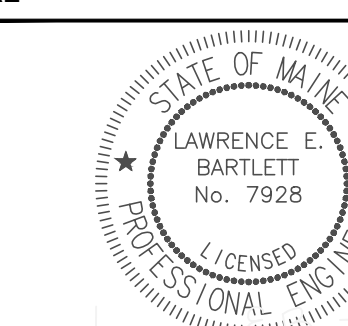
MEP
MECHANICAL SYSTEMS ENGINEERS
KURT MAGNUSON
10 FOREST FALLS DRIVE
YARMOUTH, ME 04096 SUITE 10B
207-849-1441 X202

ELECTRICAL ENGINEER
BARTLETT DESIGN, INC.
LARRY BARTLETT
5 PALMER STREET
BATH, ME 04530
207-443-5447

ARCHITECT OF RECORD
TOMI KENT HIKIDA, AIA
c/o The Switzer Group, Inc.
3 East 54th Street
New York, NY 10022
T: 212.922.1313
State of Maine License No. ARC4456

DEPARTMENT OF BUILDINGS SCAN

SEAL



ISSUE

No.	Rev.	Issued for	Date
1		LANDLORD REVIEW	09.18.17
2		UPDATED REVIEW	09.25.17
3		ISSUED FOR CONSTRUCTION	10.06.17

PROJECT NUMBER

SHEET TITLE

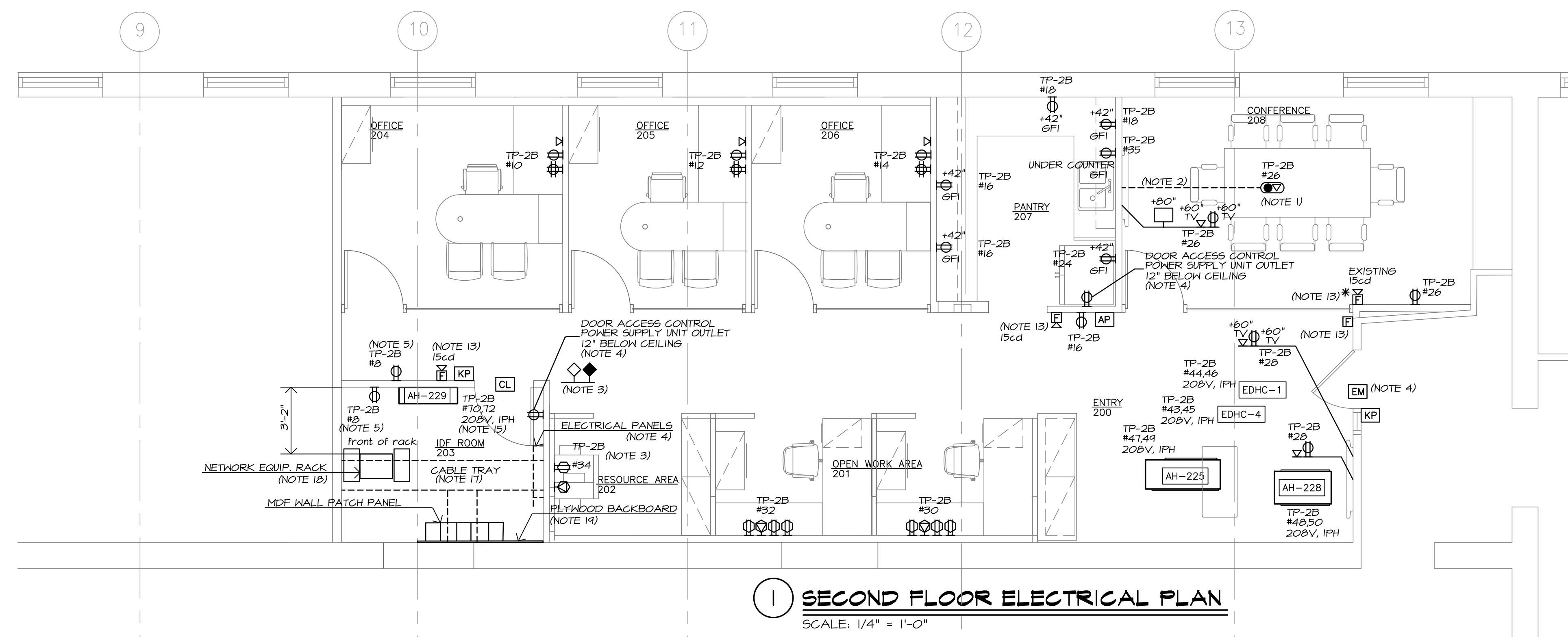
ELECTRICAL
FLOOR
PLAN

SHEET NUMBER

E1

© 2017 The Switzer Group, Inc.

- COORDINATE WITH FURNITURE VENDOR AND THE SWITZER GROUP FOR LOCATION OF FLOOR BOX AT THE CONFERENCE ROOM TABLE. VERIFY CONDUIT SIZES WITH OWNER'S AV VENDOR.
- ROUTE CONDUITS AND WIRING FOR CONFERENCE ROOM FLOOR BOX ABOVE CEILING OF FLOOR BELOW.
- COORDINATE FURNITURE OUTLETS AND WIRING CONNECTIONS WITH FURNITURE VENDOR AND THE SWITZER GROUP PRIOR TO ANY CORE DRILLS OR TERMINATIONS. CABLES AND CONDUITS SHALL NOT BE RUN EXPOSED AND MUST FEED DIRECTLY INTO FURNITURE AS CLOSE AS POSSIBLE.
- PROVIDE ALL NECESSARY WIRING FOR OWNER'S DOOR CONTROL SYSTEM. PROVIDE A 120V, 20A CIRCUIT TP-2B #33 FOR SYSTEM POWER SUPPLY UNITS.
- WHERE NOTED ON PLAN, RECEPTACLE BOX SHALL BE FIRE RATED.
- WHERE RECEPTACLE OUTLETS ARE SHOWN BACK-TO-BACK ON THE SAME WALL, STAGGER BOX LOCATIONS TO ACCOMMODATE BOXES (VERIFY IN FIELD).
- ALL RECEPTACLE OUTLETS HIGHER THAN 2'-0" AFF SHALL BE MOUNTED HORIZONTALLY.
- ALL RECEPTACLE OUTLETS SHALL BE GANGED OR STACKED TOGETHER WITH MINIMUM CLEARANCE WHERE NECESSARY.
- ALL WALLPLATES AND RECEPTACLES SHALL BE LUTROM 'CLARO DESIGNER STYLE' WITH WHITE FINISH EXCEPT WHERE NOTED OTHERWISE.
- CONTRACTOR SHALL OBTAIN PERMISSION FOR ANY WORK IN ANY ADJACENT FLOOR (INCLUDING ABOVE AND BELOW) WHERE WORK AFFECTING THE COMPLETION OF THIS PROJECT IS REQUIRED. CONTRACTOR SHALL BE RESPONSIBLE FOR ANY DAMAGE INCURRED.
- BOTH NEW AND EXISTING ELECTRICAL AND NETWORK OUTLETS, AND FIRE ALARM DEVICES, SHALL BE RECESSED WHENEVER POSSIBLE, ESPECIALLY WHEN LOCATED ON DRYWALL SURFACES.
- ALL POWER AND COMMUNICATIONS TERMINATIONS IN FURNITURE SYSTEM PANELS SHALL MATCH SYSTEMS FINISH.
- PROVIDE FIRE ALARM DEVICES SHOWN, AS WELL AS ASSOCIATED WIRING, AND SYSTEM RE-PROGRAMMING AS REQUIRED. NEW FIRE ALARM DEVICES SHALL MATCH EXISTING SYSTEM MANUFACTURER AND EQUIPMENT MODELS.
- CIRCUIT NUMBERS REFER TO EXISTING PANEL TP-2B LOCATED IN THE FIRST FLOOR ELECTRICAL ROOM BETWEEN COLUMN LINES 6 AND 7 AND COLUMN LINES C.1 AND B.1. CIRCUIT NUMBERS INDICATED ARE TO BE CONNECTED TO EXISTING CIRCUIT BREAKERS EXCEPT AS FOLLOWS WHERE NEW CIRCUIT BREAKERS ARE TO BE PROVIDED AND INSTALLED:
CIRCUIT 70.72 15A/2P AH-229
CIRCUIT 74.76 15A/2P OU-229
- PROVIDE 30A/2P UNFUSED DISCONNECT SWITCHES AT AIR HANDLING UNIT AH-229, AND AT OUTSIDE AIR UNIT OU-229 WHERE DISCONNECTING MEANS IS NOT SUPPLIED WITH EITHER UNIT.
- PROVIDE 30A/2P UNFUSED DISCONNECT SWITCHES AT AIR HANDLING UNIT AH-229, AND AT OUTSIDE AIR UNIT OU-229 WHERE DISCONNECTING MEANS IS NOT SUPPLIED WITH EITHER UNIT.
- INSTALL CABLE TRAY IN IDF ROOM WITH BOTTOM OF TRAY AT 7'-6" AFF. CABLE TRAY SHALL BE ALUMINUM LADDER TRAY, 18 INCHES WIDE WITH RUNGS SPACED AT 9 INCHES, AND WITH ALL NECESSARY FITTINGS. CABLE TRAY SHALL BE MANUFACTURED BY T&B, OR APPROVED EQUAL.
- PROVIDE FOUR QUAD 20A, 120V RECEPTACLE OUTLETS AT THE NETWORK EQUIPMENT RACK IN THE IDF ROOM. RECEPTACLES SHALL INCLUDE AN ISOLATED GROUND AND SHALL BE SEPARATELY CIRCUIT TO: TP-2B #69; TP-2B #71; TP-2B #73; AND TP-2B #75.
- PROVIDE A 3/4" THICK, BY 6'-0" WIDE BY 8'-0" TALL FIRE RESISTANT PLYWOOD BACKBOARD IN THE IDF ROOM WHERE INDICATED. THE BACKBOARD SHALL BE INSTALLED ON THE WALL VERTICALLY WITH THE BOTTOM LOCATED 2" ABOVE THE FLOOR.
- FLOOR BOX IN CONFERENCE ROOM SHALL BE LEGRAND SERIES 10AT POKE-THRU BOX WITH TWO DUPLEX 20A, 120V GROUND RECEPTACLES, A DUPLEX CAT6 NETWORK OUTLET, AN HDMI OUTLET, A VGA OUTLET, AND AN AUDIO JACK (AUDIO/VIDEO CABLES BY OTHERS). PROVIDE A BRASS COVER PLATE.
- MINIMUM WIRE SIZE SHALL BE #12 AWG. MINIMUM CONDUIT SIZE SHALL BE 3/4". CONDUIT SHALL BE EMT. BRANCH CIRCUIT WIRING SHALL BE CONCEALED WITHIN PARTITIONS OR ABOVE CEILINGS AND SHALL BE TYPE MC CABLE.
- ALL ELECTRICAL WORK SHALL CONFORM TO NFPA 70-2017.
- COORDINATE ALL WORK ASSOCIATED WITH MODIFYING THE EXISTING FIRE ALARM SYSTEM WITH THE LANDLORD AND WITH THE SEACOAST SECURITY MONITORING AGENCY 48 HOUR IN ADVANCE OF PERFORMING WORK.
- DELIVER ALL EXISTING ELECTRICAL ITEMS REMOVED AS PART OF DEMOLITION TO THE OWNER IN WORKING CONDITION.



1 SECOND FLOOR ELECTRICAL PLAN

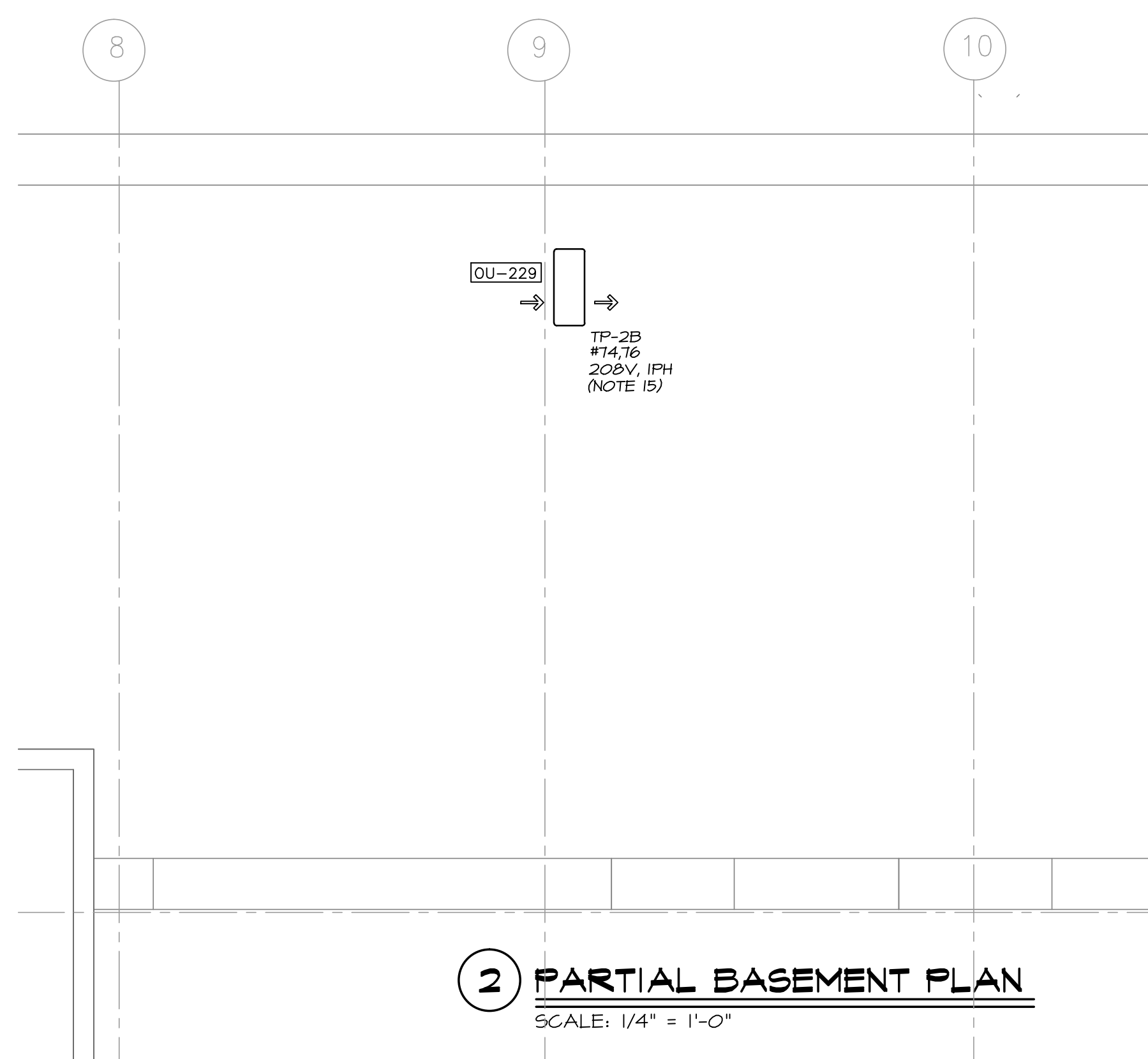
SCALE: 1/4" = 1'-0"

AIPHONE DOOR CONTROLS:

- MONITOR STATION ("AP"):
 - AIPHONE MODEL # JK-1MEDSS:
 - WALL STATION WITH LCD VIDEO SCREEN, PAN/TILT/ZOOM CONTROLS FOR ENTRY STATION, MICROPHONE, TALK BUTTON, VOLUME CONTROLS, AND ENTRY DOOR LOCK RELEASE BUTTON.
- DOOR ENTRY STATION ("ES"):
 - AIPHONE MODEL # JK-DVF-AC:
 - WALL STATION WITH CAMERA, CALL BUTTON, AND KEYPAD FOR DOOR LOCK RELEASE.
- DOOR ENTRY KEYPAD ("KP"):
 - AIPHONE MODEL # AC-10S:
 - WALL STATION WITH KEYPAD FOR DOOR LOCK RELEASE.
- DOOR ACCESS CONTROL RELAY:
 - AIPHONE MODEL # RY-18L:
 - FORM C CONTROL RELAY FOR DOOR LOCK RELEASE.
- POWER SUPPLY:
 - AIPHONE MODEL # PS-1820UL:
 - POWER SUPPLY UNIT FOR DOOR ACCESS CONTROLS.
- NOTES:
 - PROVIDE ALL NECESSARY WIRING PER AIPHONE REQUIREMENTS.
 - PROVIDE A POWER SUPPLY UNIT FOR THE ENTRY DOOR AND FOR THE DOOR TO IDF ROOM 203. PROVIDE A SINGLE RECEPTACLE OUTLET FOR EACH POWER SUPPLY UNIT.
 - CONSULT ARCHITECT FOR WALL STATION MOUNTING HEIGHTS.

2 PARTIAL BASEMENT PLAN

SCALE: 1/4" = 1'-0"



- 20A, 125V, DUPLEX GROUNDED RECEPTACLE OUTLET WITH A FLUSH FACEPLATE AND RECESSED RECEPTACLE
- 20A, 125V, DUPLEX RECEPTACLE OUTLET
- DUPLEX CAT6 NETWORK OUTLET
- SINGLE CAT6 NETWORK OUTLET FOR TELEVISION
- WALL MOUNTED VOICE/DATA FEED FOR SYSTEMS FURNITURE INSTALLED AT 6" AFF
- WALL MOUNTED POWER FEED FOR SYSTEMS FURNITURE INSTALLED AT 6" AFF
- 20A, 125V, DUPLEX RECEPTACLE OUTLET INSTALLED IN FURNITURE PARTITION
- DUPLEX CAT6 NETWORK OUTLET INSTALLED IN FURNITURE PARTITION
- RECESSED FLOOR BOX (SEE NOTE 20 FOR DESCRIPTION)
- AIPHONE DOOR ACCESS CONTROL KEYPAD STATION
- DOOR ACCESS CONTROL ELECTRIC MORTISE PROVIDED WITH DOOR HARDWARE
- AIPHONE MONITOR STATION
- AIPHONE DOOR ENTRY STATION
- DOOR ACCESS CONTROL CIPHER LOCK PROVIDED WITH DOOR HARDWARE
- FIRE ALARM SYSTEM PULL STATION
- FIRE ALARM SYSTEM HORN/STROBE
- FIRE ALARM SYSTEM STROBE
- TELEVISION OUTLET FOR COAXIAL CABLE
- CEILING MOUNTED MOTION SENSOR
- LIGHTING WALL DIMMER



MECHANICAL SYSTEMS ENGINEERS
 ROYAL RIVER CENTER, UNIT 10B
 10 FOREST FALLS DRIVE, YARMOUTH, MAINE 04096
 (207) 846-1441
 FACEBOOK: MECHANICAL SYSTEMS ENGINEERS
 © COPYRIGHT 2017
 M.S.E. Proj. 1728