

PROJECT

WELLS FARGO
254 COMMERCIAL ST., SECOND FLOOR
PORTLAND, ME 04101

ARCHITECT

THE SWITZER GROUP
3 EAST 54th STREET, 7th FLOOR
NEW YORK, NY 11022
Project Principal: KENT HIKIDA
T. 212.922.1313

CONSULTANTS

MEP
MECHANICAL SYSTEMS ENGINEERS
KURT MAGNUSSON
10 FOREST FALLS DRIVE
YARMOUTH, ME 04096 SUITE 10B
207-849-1441 X202

ELECTRICAL ENGINEER
BARTLETT DESIGN INC.
LARRY BARTLETT
942 WASHINGTON STREET
BATH, ME 04530
207-443-5447

ARCHITECT OF RECORD
TOMI KENT HIKIDA, AIA
c/o The Switzer Group, Inc.
3 East 54th Street
New York, NY 10022
T: 212.922.1313
State of Maine License No. ARC4456

DEPARTMENT OF BUILDINGS SCAN

SEAL

ISSUE

No.	Rev.	Issued for	Date
1		LANDLORD REVIEW	08.30.2017
2		ISSUE FOR BID	10.06.2017

PROJECT NUMBER

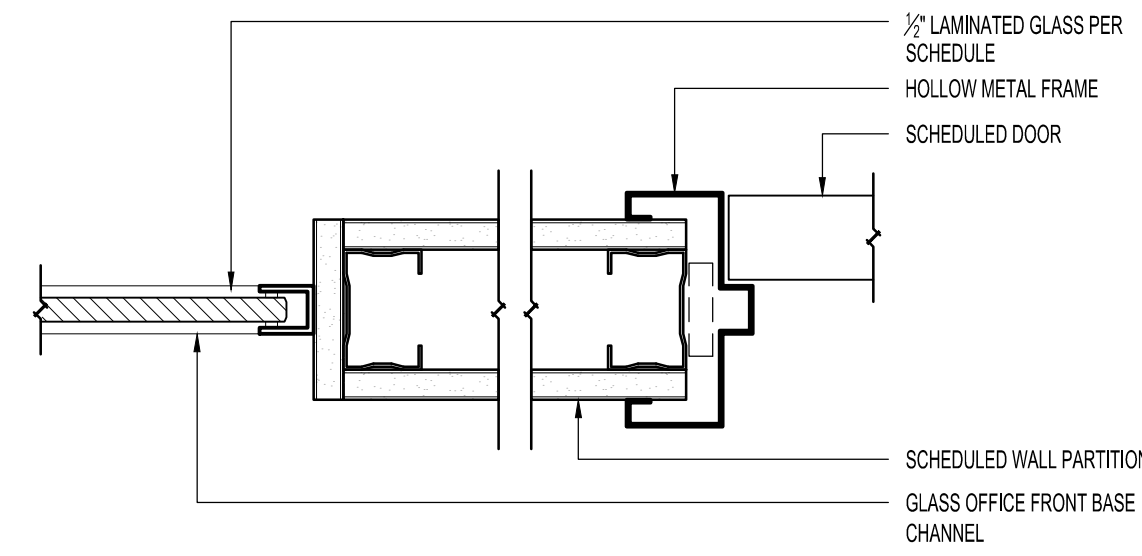
116145.00

SHEET TITLE

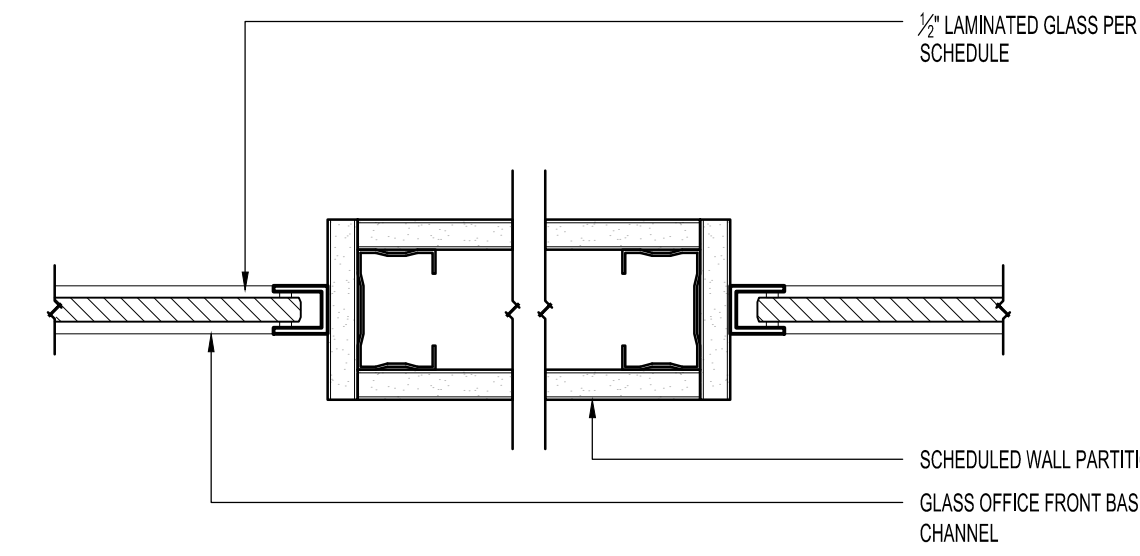
DETAILS - MISCELLANEOUS

SHEET NUMBER

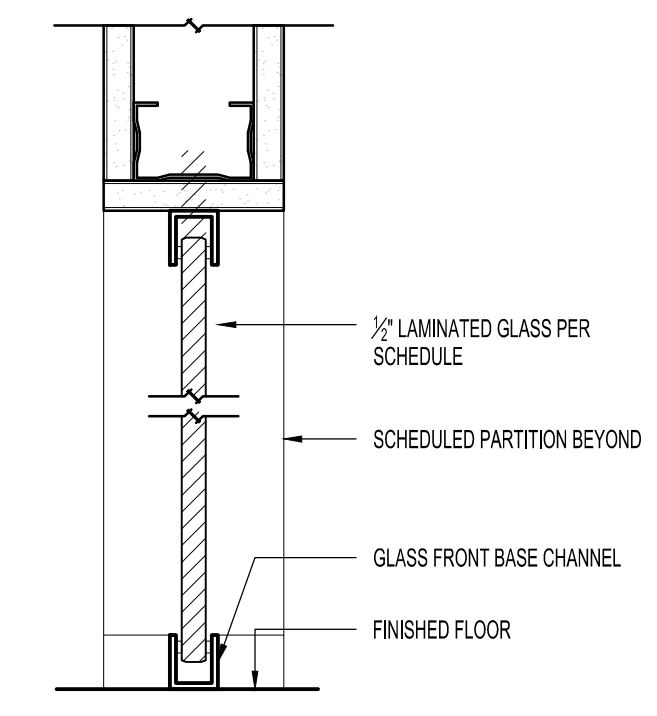
A-501



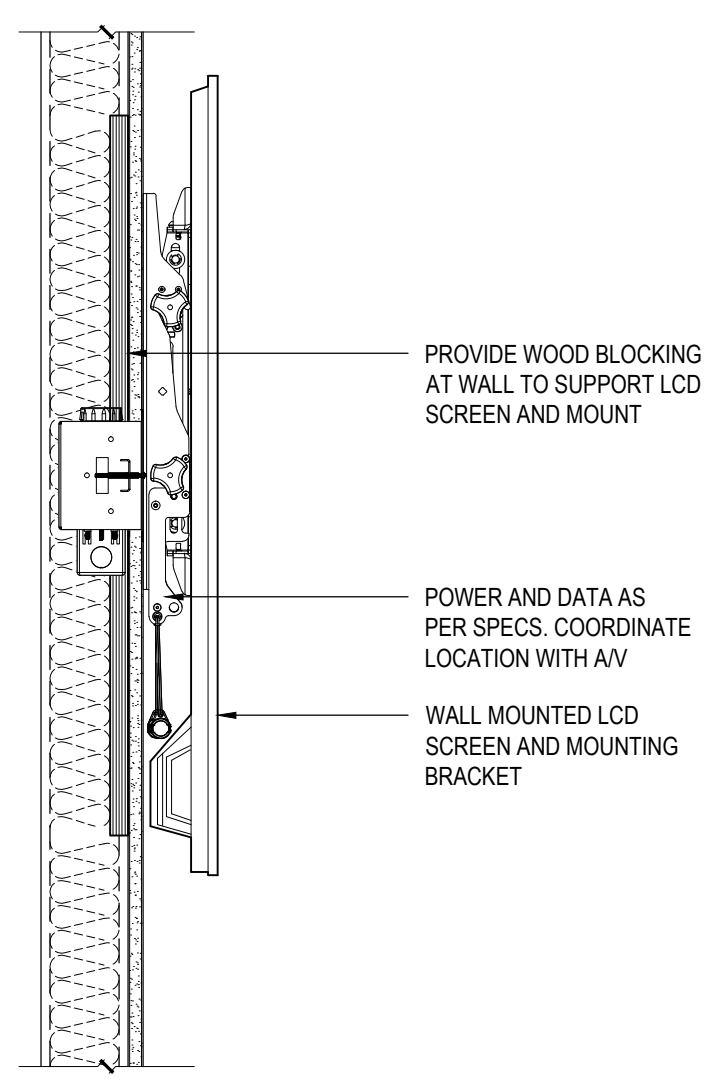
D1 JAMB DETAIL
Scale : 3" = 1'-0"



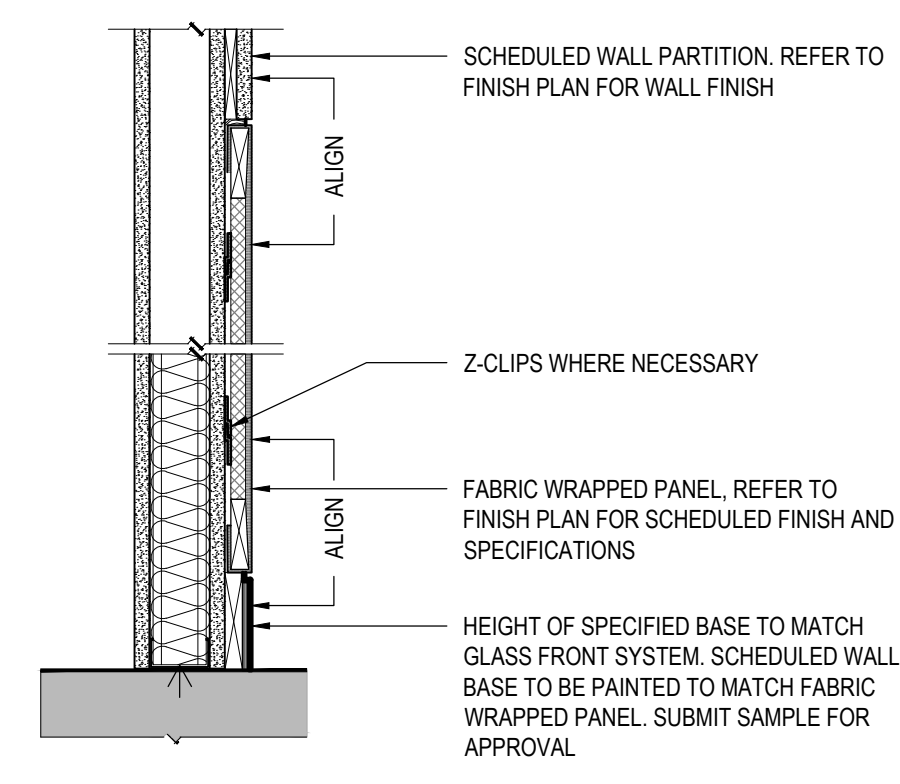
D2 JAMB DETAIL
Scale : 3" = 1'-0"



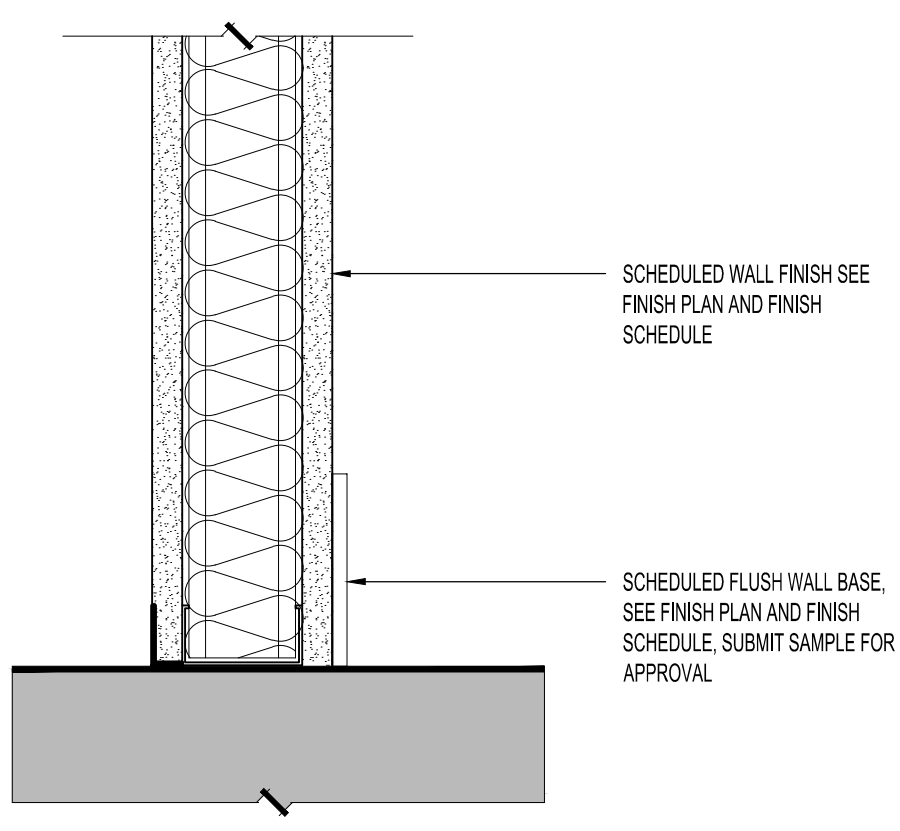
D3 HEAD DETAIL
Scale : 3" = 1'-0"



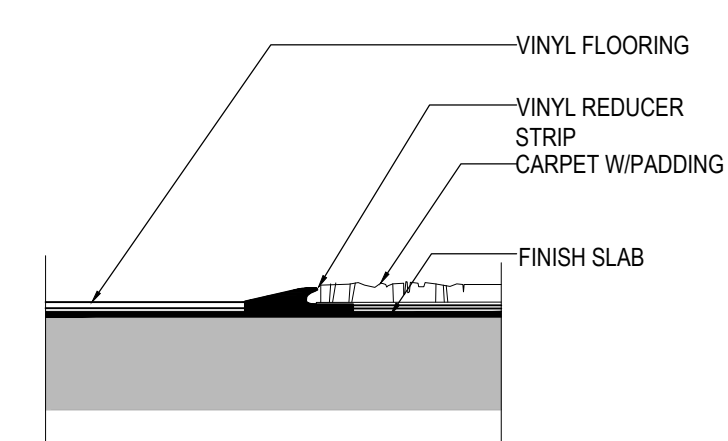
D4 TYPICAL DETAIL @ SURFACE MOUNTED LCD TV
Scale : 1-1/2" = 1'-0"



D5 FABRIC WRAPPED PANEL WALL DETAIL
Scale : 1-1/2" = 1'-0"



D6 RUBBER BASE DETAIL
Scale : 3" = 1'-0"



D7 SILL DETAIL: VINYL TO CARPET
Scale : 3" = 1'-0"