

PROJECT



254 COMMERCIAL ST., SECOND FLOOR
PORTLAND, ME 04101

ARCHITECT

THE SWITZER GROUP

3 EAST 54th STREET, 7th FLOOR
NEW YORK, NY 11022
Project Principal: KENT HIKIDA
T. 212.922.1313

CONSULTANTS

MEP
MECHANICAL SYSTEMS ENGINEERS
KURT MAGNUSSON
10 FOREST FALLS DRIVE
YARMOUTH, ME 04096 SUITE 10B
207-849-1441 X202

ELECTRICAL ENGINEER
BARTLETT DESIGN INC.
LARRY BARTLETT
942 WASHINGTON STREET
BATH, ME 04530
207-443-5447

ARCHITECT OF RECORD
TOMI KENT HIKIDA, AIA
c/o The Switzer Group, Inc.
3 East 54th Street
New York, NY 10022
T: 212.922.1313
State of Maine License No. ARC4456

DEPARTMENT OF BUILDINGS SCAN

SEAL

ISSUE

No.	Rev.	Issued for	Date
1		LANDLORD REVIEW	08.30.2017
2		ISSUE FOR BID	10.06.2017

PROJECT NUMBER

116145.00

SHEET TITLE

**SECOND FLOOR
REFLECTED CEILING
PLAN, LEGEND, AND
NOTES**

SHEET NUMBER

A-101

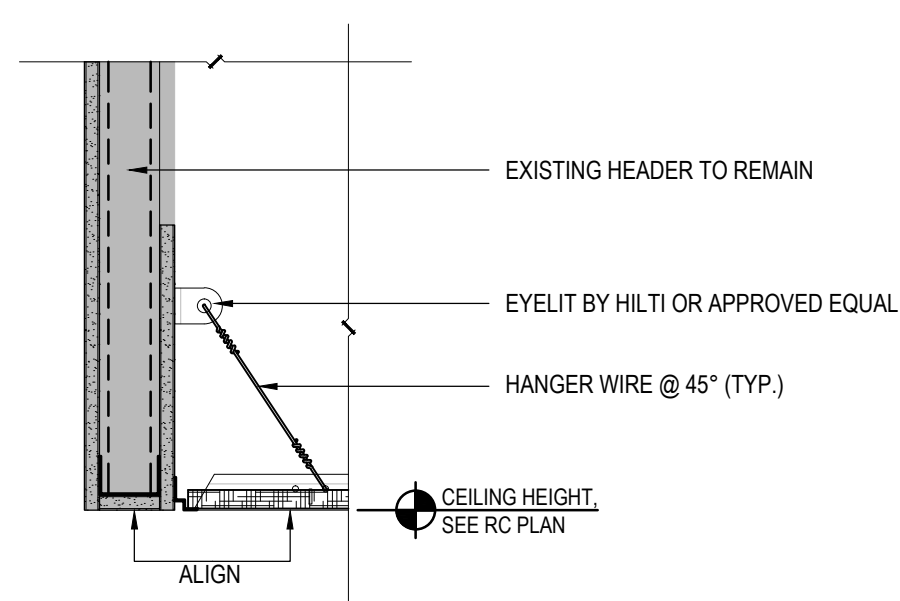
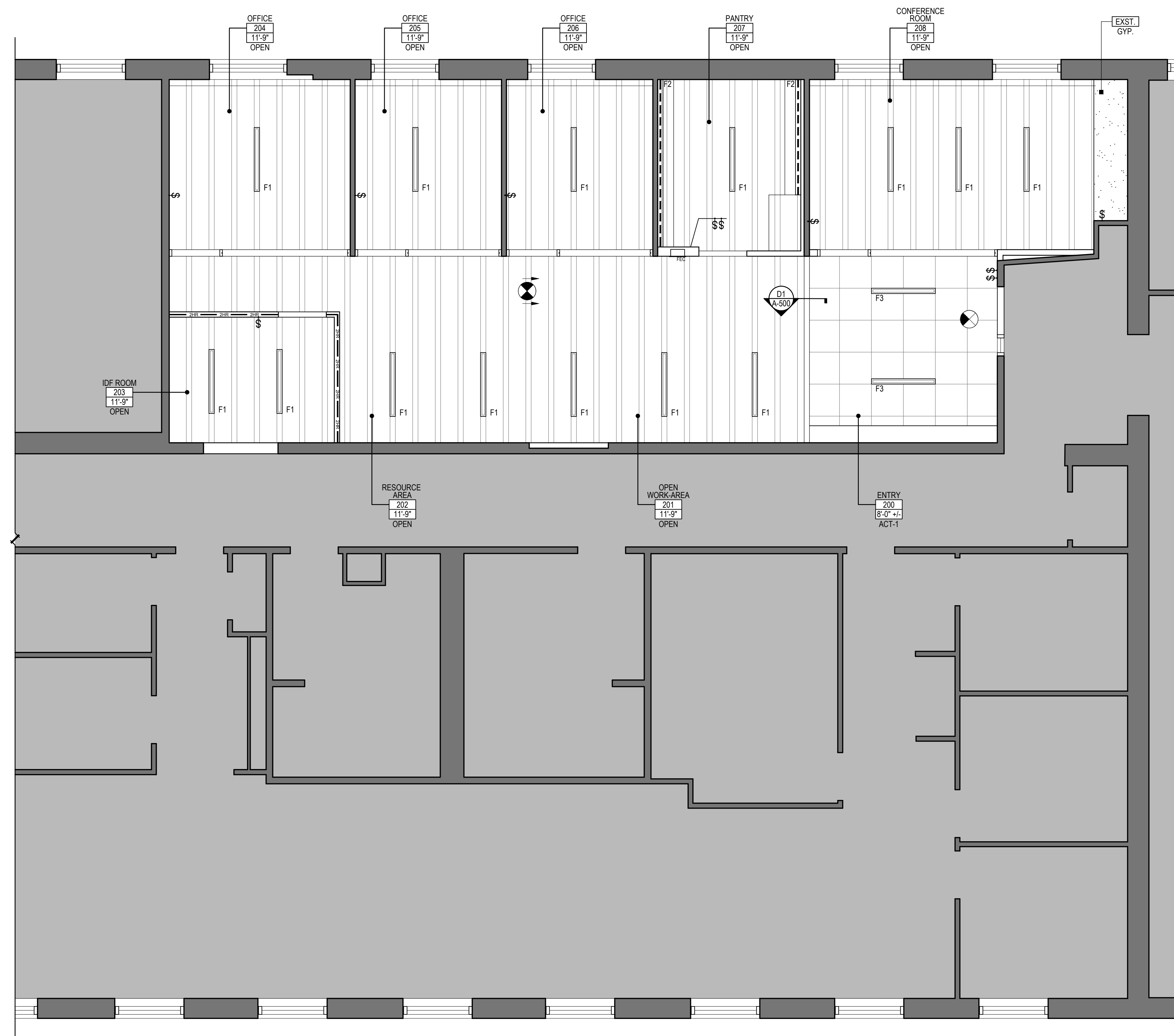
REFLECTED CEILING PLAN NOTES

- DO NOT SCALE THE DRAWINGS.
- ALL CEILING HEIGHTS TO BE 8'-0" ABOVE FINISHED FLOOR UNLESS OTHERWISE NOTED.
- REFER TO THE ENGINEERING DRAWINGS FOR CIRCUITING, SWITCHING, SPECIFICATIONS, ETC.
- ALL LIGHT SWITCHES AND DIMMERS TO BE GANGED AND STACKED TOGETHER AS REQUIRED. SWITCHES TO BE MOUNTED 3'-6" ABOVE FINISHED FLOOR TO THE CENTER LINE UNLESS OTHERWISE NOTED.
- ALL LIGHT SWITCHES TO BE "LUTRON MAESTRO" SERIES; ALL DIMMERS TO BE "LUTRON MAESTRO WITH C-L DIMMER"; ALL WALL MOUNTED OCCUPANCY / VACANCY SENSORS TO BE "LUTRON MAESTRO SENSOR"; ALL WALL MOUNTED OCCUPANCY / VACANCY SENSOR WITH DIMMERS TO BE "LUTRON MAESTRO SENSOR WITH C-L DIMMER"; UNLESS OTHERWISE NOTED. SEE ENGINEERING DRAWINGS FOR EXACT SPECIFICATIONS.
- ALL CEILING GRID STARTING POINTS AND LIGHT FIXTURE LOCATIONS TO BE CHALKED ON THE FLOOR AND/OR WALLS FOR APPROVAL BY THE SWITZER GROUP PRIOR TO THE INSTALLATION.
- ALL THERMOSTATS AND FIRE SAFETY DEVICES INDICATED ON ENGINEERS DRAWINGS ARE TO BE LOCATED ABOVE LIGHT SWITCHES AND ALIGNED ON CENTERLINE IN ALL ENCLOSED ROOMS (OFFICES, CONFERENCE ROOMS, ETC).
- ALL CONTROL DEVICES TO BE WHITE UNLESS OTHERWISE NOTED.
- CONTRACTOR TO SUBMIT COORDINATED SHOP DRAWINGS FOR ALL CEILING RELATED TRADES. NOTIFY THE SWITZER GROUP IMMEDIATELY IF CEILING HEIGHTS, OR DETAILS SHOWN, CANNOT BE OBTAINED. NO CEILING INSTALLATION IS TO BEGIN UNTIL CONFLICTS ARE RESOLVED.
- CONTRACTOR SHALL PRICE ANY CEILING TAKE-DOWN AND RE-INSTALLATION REQUIRING ACCESS IN AREAS NOT INDICATED ON DRAWINGS. (INCLUDING WORK REQUIRED ON FLOOR BELOW).
- ALL LAY-IN CEILING TO BE ACT-1 UNLESS OTHERWISE NOTED. SEE SCHEDULES SHEET FOR ALL CEILING TILE AND GRID SYSTEM SPECIFICATIONS.
- ALL GYPSUM BOARD CEILINGS TO BE PAINTED P-1 WHITE UNLESS OTHERWISE NOTED.
- OPEN AREA LIGHTING TO BE CONTROLLED BY OCCUPANCY SENSOR WITH LOCAL OVERRIDE SWITCH. SEE ENGINEERING DRAWINGS FOR SWITCH LOCATIONS AND CIRCUITING.
- REPAINT INTERIOR FACES OF ALL REMAINING EXISTING LINEAR DIFFUSERS. SEE FINISH PLAN FOR MORE INFORMATION.
- GYPSUM BOARD CEILING CONSTRUCTION SHOULD BE ISOLATED BY CONTROL JOINTS WHERE:
 - PARTITIONS OR CEILINGS OF DISSIMILAR CONSTRUCTION MEET AND REMAIN IN THE SAME PLANE;
 - WINGS OF "L", "U", AND "T" SHAPED CEILINGS ARE JOINED;
 - EXPANSION OR CONTROL JOINTS OCCUR IN THE BASE WALL OR CEILING CONSTRUCTION AND/OR BUILDING STRUCTURE;
 - INTERIOR CEILING WITH PERIMETER RELIEF EXTENDING 50'-0" IN ANY DIRECTION
 - INTERIOR CEILING WITHOUT PERIMETER RELIEF EXTENDING 30'-0" IN ANY DIRECTION
- FIRE SPRINKLER NOTES
DEMOLITION AND CONSTRUCTION SHOULD BE PERFORMED IN A MANNER WHERE FIRE PROTECTION SERVICES (DETECTION, SUPPRESSION, ANNUNCIATION) ARE INOPERABLE FOR ABSOLUTE MINIMUM PERIODS OF TIME. EXISTING FIRE SPRINKLER ESCUTCHEONS AND AUDIO/VISUAL DEVICES ARE TO BE RETURNED TO CLIENT/BUILDING MANAGEMENT.
 - ALL SPRINKLER HEADS & COVERS IN OPEN AREAS WITH EXPOSED STRUCTURE & MECHANICAL WORK PAINTED WHITE.

LEGEND

- NAME - INDICATES ROOM OR AREA DESIGNATION
- XXX - INDICATES ROOM OR AREA NUMBER
- REFERENCE NOTES
- AREA NOT IN CONTRACT
- GYPSUM CEILING
- 2' X 2' LAY-IN TILE CEILING
- SECTION NUMBER
- DRAWING NUMBER
- LAY-IN CEILING GRID START POINT
- HEIGHT - CEILING HEIGHT
- HEIGHT - CEILING TRANSITION
- HEIGHT - CEILING HEIGHT
- HEIGHT - CEILING HEIGHT
- TYPE - CEILING TYPE
- CEILING MOUNTED EXIT SIGN (LIGHTED), DARKENED QUADRANTS INDICATE LIGHT FACES. ARROWS INDICATE DIRECTION OF EXIT.
- WALL MOUNTED EXIT SIGN (LIGHTED), DARKENED QUADRANTS INDICATE LIGHT FACES.
- DECORATIVE PENDANT LIGHT FIXTURE
- RECESSED LINEAR LIGHT FIXTURE
- DECORA LIGHT SWITCH (GANG MULTIPLE SWITCHES)
- CIRCUITING AND SUBSCRIPTS (IF REQUIRED)
 - 3 - THREE WAY SWITCH
 - D - DIMMING LIGHT CONTROL
 - F - EXHAUST FAN
 - S - PROJECTION SCREEN
- SECURITY CAMERA
- CEILING MOUNTED EQUIPMENT
 - SP - SPEAKER
 - WAP - WIRELESS ACCESS POINT

REFERENCE NOTES



D1 CEILING DETAIL @ TRANSITION FLUSH HEADER
Scale: 1-1/2" = 1'-0"