



Consultant  
Logo / Info

CPB2, LLC  
Tenant Fit Up  
Expansion

Merrill's Wharf  
252/254 Commercial St.  
Portland, Maine

REVISIONS

PERMIT DOCUMENTS  
JUNE 22, 2015

Code Summary &  
Life Safety Plan

CODE SUMMARY:

2009 - NFPA 101 / 2009 - IBC

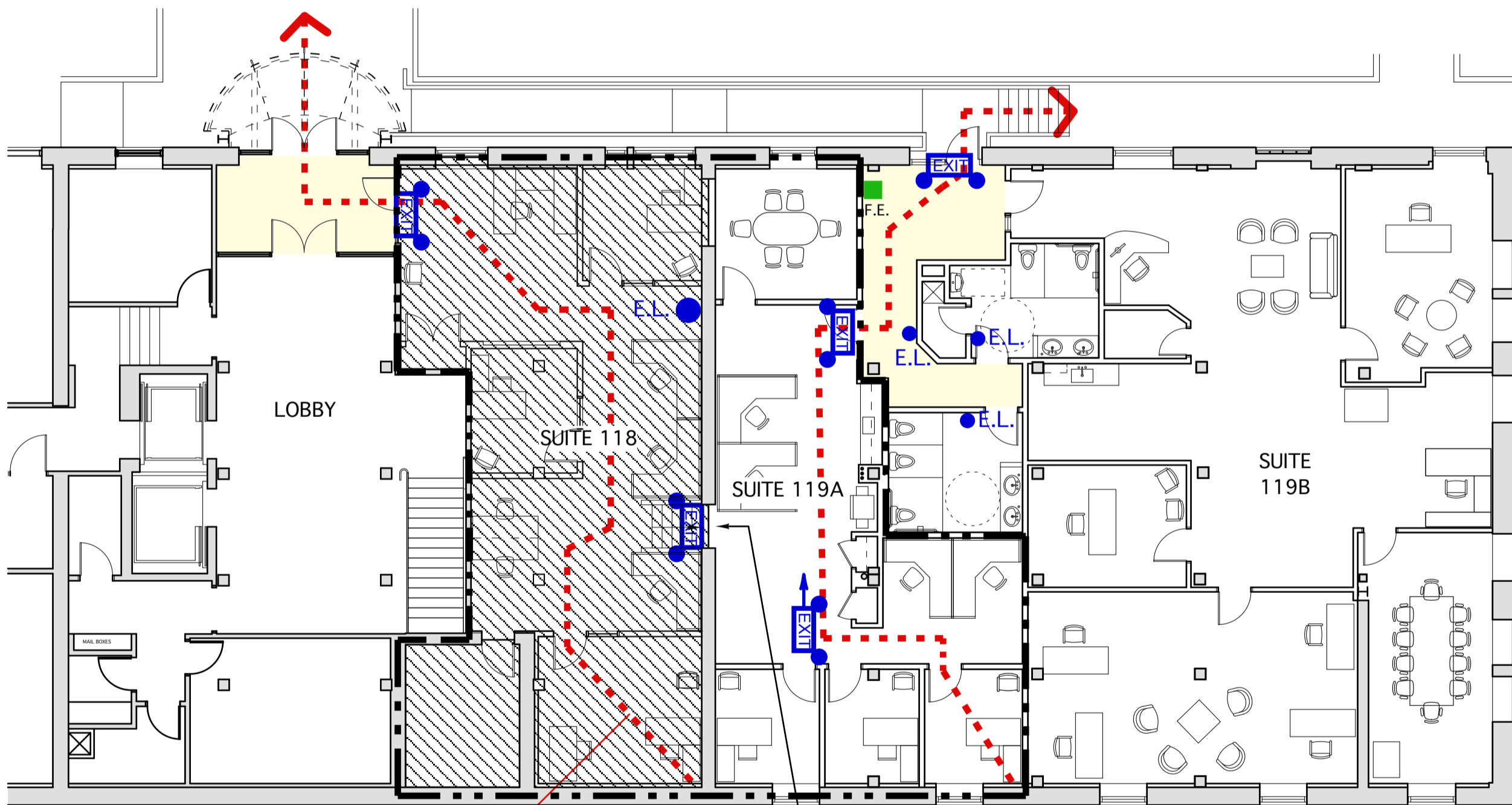
- Work Area Square Footage: 1,422 S.F.
- Building Fire Safety Features: Automatic supervised sprinkler, detection, & alarm systems installed.
- Construction Type: IBC: Type IIIB, NFPA: Type III (200)
- Tenant Use Group: IBC: Business / NFPA: Business
- Occupant Load Factor: Business Use= 100 S.F. per person (NFPA Table 7.3.1.2)  
1,422/100 = 14.22 = 15 person occupant load

MEANS OF EGRESS REQUIREMENTS:

- Max. Common Path - (Sprinkled) 100' REQUIREMENT MET
- Max. Dead End - (Sprinkled) 50' REQUIREMENT MET
- Travel Distance to Exit - (Sprinkled) 300' REQUIREMENT MET

LEGEND

- EXIT ACCESS CORRIDOR  
(No Rating required- All Business Use, Sprinkled Bldg.)
- EXIT SIGN/COMB EMERGENCY LIGHT
- EMERGENCY LIGHT
- TRAVEL DISTANCE TO EXIT DISCHARGE  
(INCLUDES DISTANCE TRANSVERSING EXTERIOR STAIR TO GRADE)
- FIRE EXTINGUISHER LOCATION  
(REQUIRED EVERY 75' & AT STAIRS)
- BOUNDARY OF TENANT SPACE AFTER PROPOSED RENOVATION.
- EXPANSION AREA OF EXIST'G TENANT SUITE TO BE CONSTRUCTED AS PART OF THIS PERMIT



TRAVEL  
DISTANCE  
TO EXIT  
DISCHARGE  
= 66'-0"

NEW OPENING IN WALL AND NEW  
STAIR CONNECTING SUITES 118 & 119A

LIFE SAFETY PLAN

3/32"=1'-0"