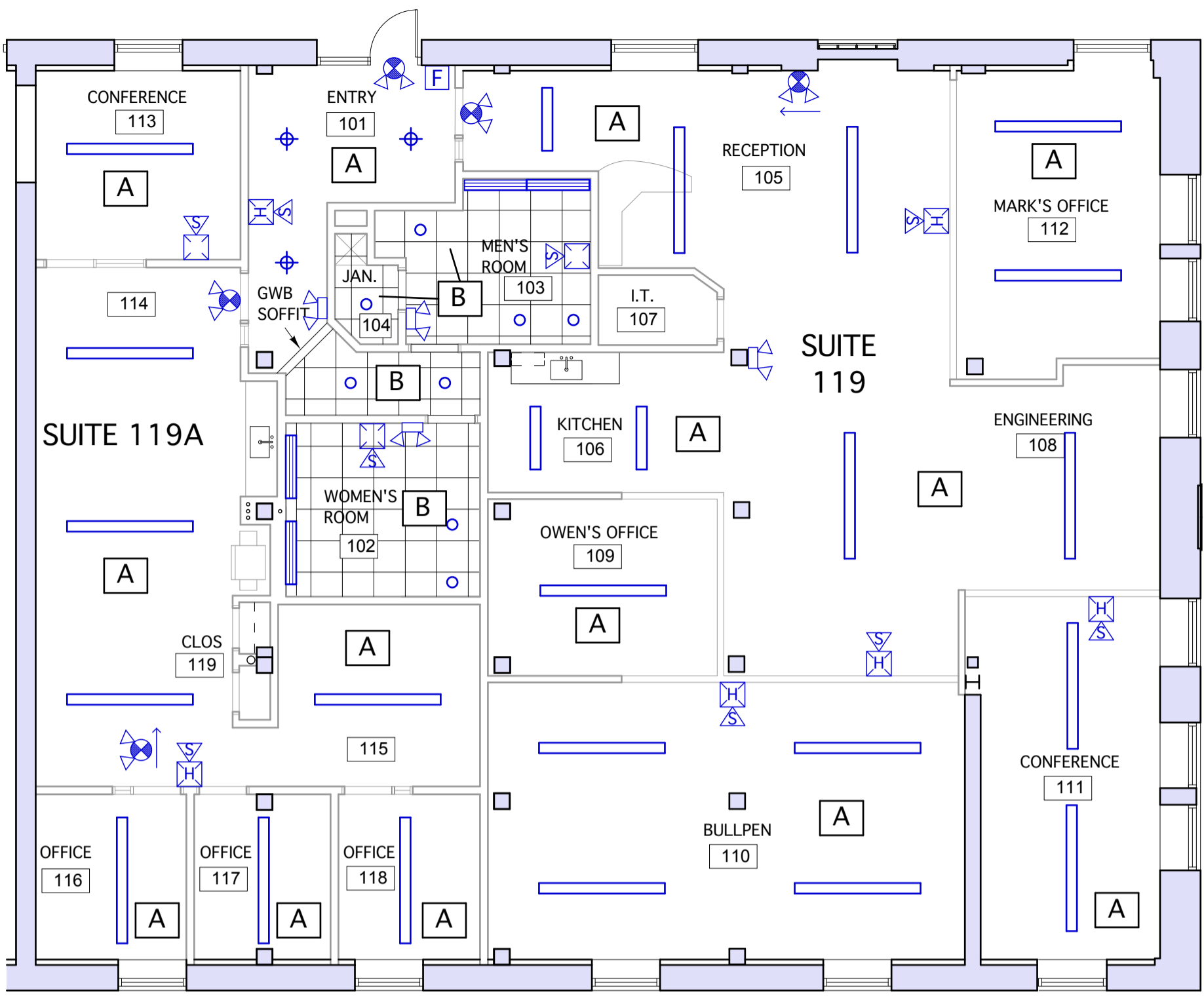
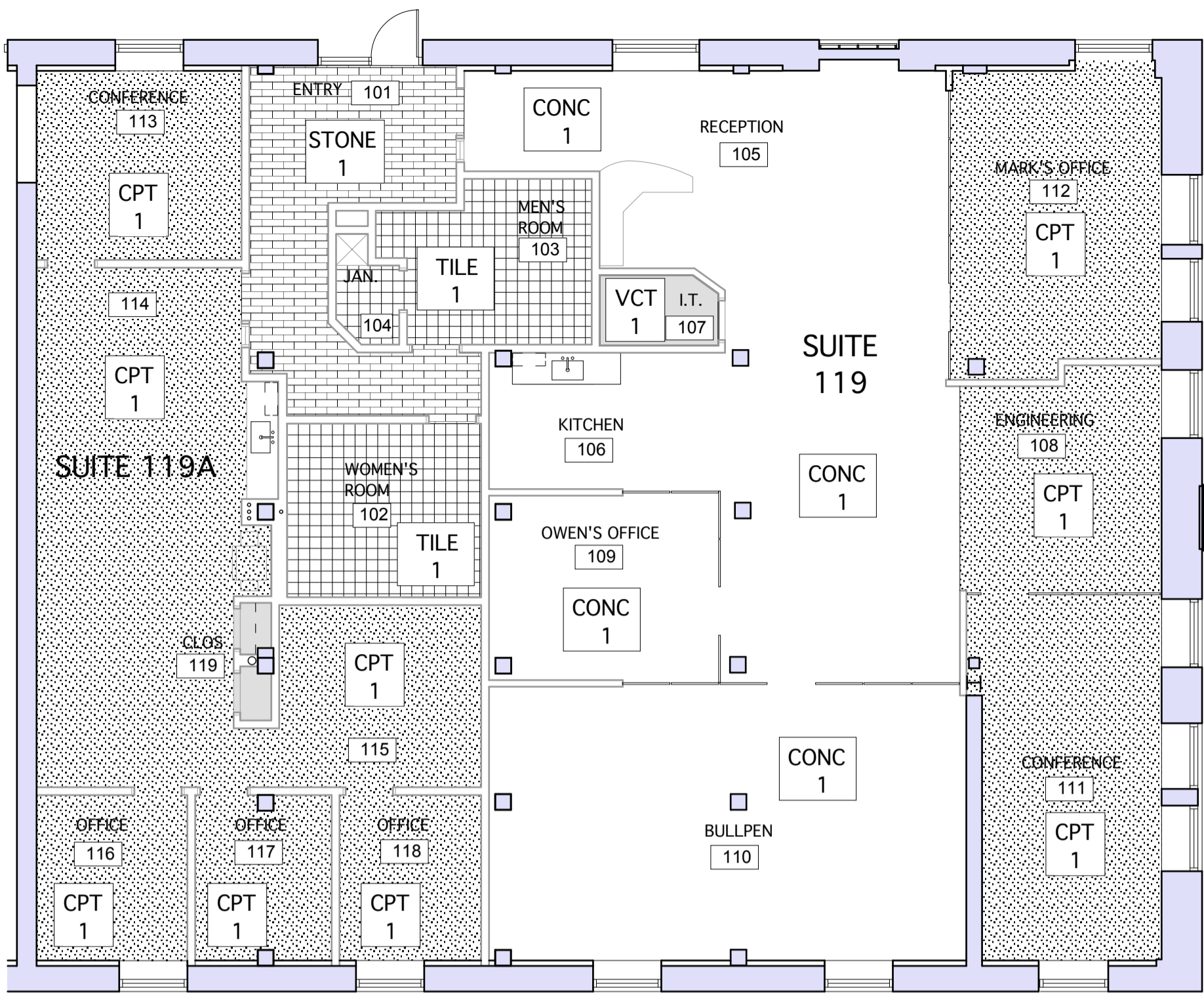




Consultant
Logo / Info



REFLECTED CEILING PLAN
1/8"=1'-0"



FLOOR FINISH PLAN
1/8"=1'-0"

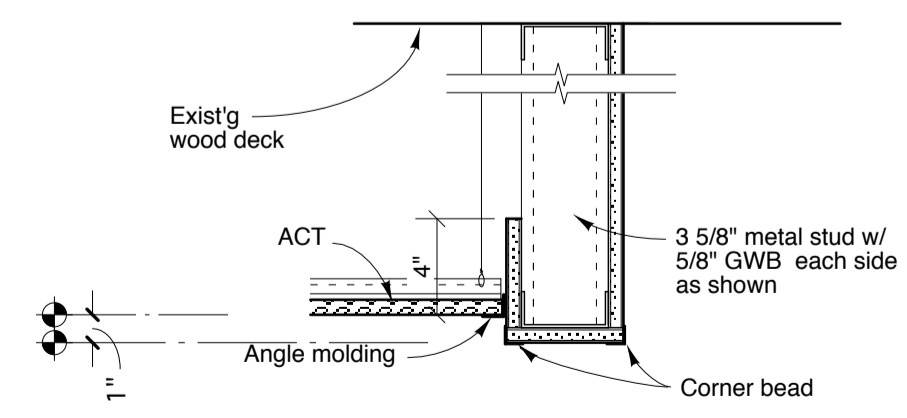
ELECTRICAL LEGEND

- 8' fluorescent linear pendant fixture
- 4' fluorescent linear pendant fixture
- Decorative Pendant Fixture
- Recessed Can Fixture
- Fire Alarm Strobe/Horn Unit
- Fire Alarm Strobe Unit
- Fire Alarm Pull Station
- Combination Emergency Light/Exit Sign
- Emergency Light
- Duplex Outlet
- Quadraplex Outlet
- Floor J Box for powering Work Stations
- Single Pole Switch
- Three Pole Switch

CEILING TYPES LEGEND

- A** Existing wood beams and deck to remain. New beams to be stained to match as closely as possible the color of exist'g beams.
- B** 2x2 ACT: Building Standard Tenant Tile & Grid

ELECTRICAL NOTE: All existing exposed armored cable located at exposed ceilings shall be removed and replaced with new wire running in EMT.



TYPICAL SOFFIT DETAIL
1 1/2" = 1'-0"

FLOORING TYPES LEGEND

- CPT 1** BUILDING STANDARD TENANT CARPET w/ VINYL BASE
- STONE 1** "CANYON GOLD" QUARTZITE STONE TILE - 12"x24"
- TILE 1** CERAMIC TILE w/ CERAMIC TILE BASE
- VCT 1** BUILDING STANDARD TENANT VCT w/ VINYL BASE
- CONC 1** POLISHED CONCRETE

QUEST & CASEY PRENTICE
Tenant Fit Ups

Merrill's Wharf
252/254 Commercial St.
Portland, Maine

REVISIONS

PERMIT DOCUMENTS
MARCH 18, 2014

Ceiling & Flooring Plans
Scale: As Noted