

AREAS OF PROPOSED WORK:

SCOPE:

- PAINT EXISTING PARTITIONS.
- INSTALL CARPETING AND RUBBER BASE.
- INSTALL BRANCH DUCTWORK AND DIFFUSERS FROM EXIST'G HVAC SYSTEM.
- INSTALL PENDENT FLUORESCENT LIGHT FIXTURES.
- INSTALL LIGHT SWITCHES, AND STANDARD POWER OUTLETS AT EXIST'G PARTITIONS.
- INSTALL EXIT SIGNS, + EMERGENCY LIGHTS.
- SPRINKLER SYSTEM AND FIRE ALARM ARE ALREADY IN PLACE.

KEY PLAN
NOT TO SCALE

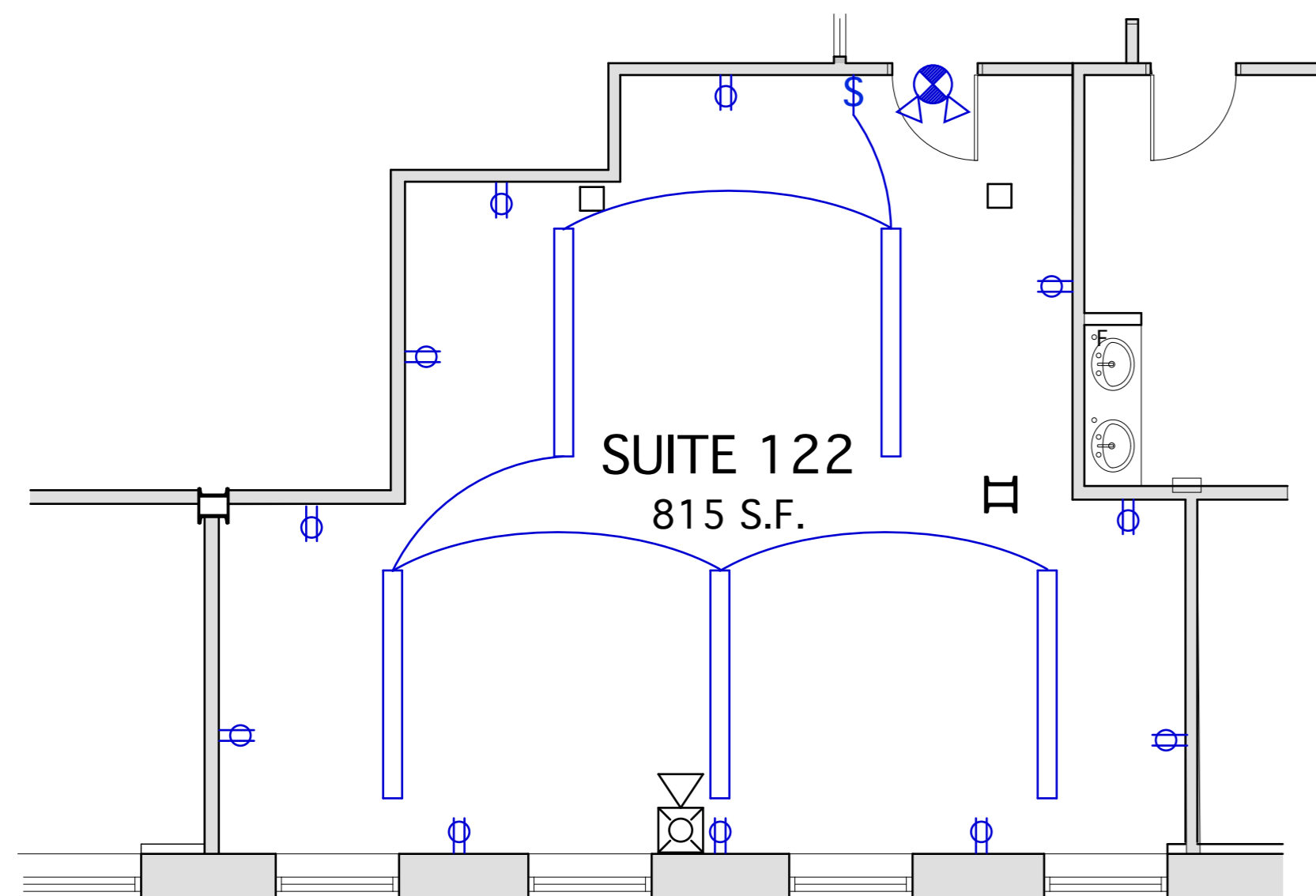
**MERRILL'S WHARF
Tenant Fit Ups**

252/254 Commercial St.
Portland, Maine

REVISIONS

CONSTRUCTION DOCUMENTS
Date, 12/3/13

Layout Plan
Scale: As Noted

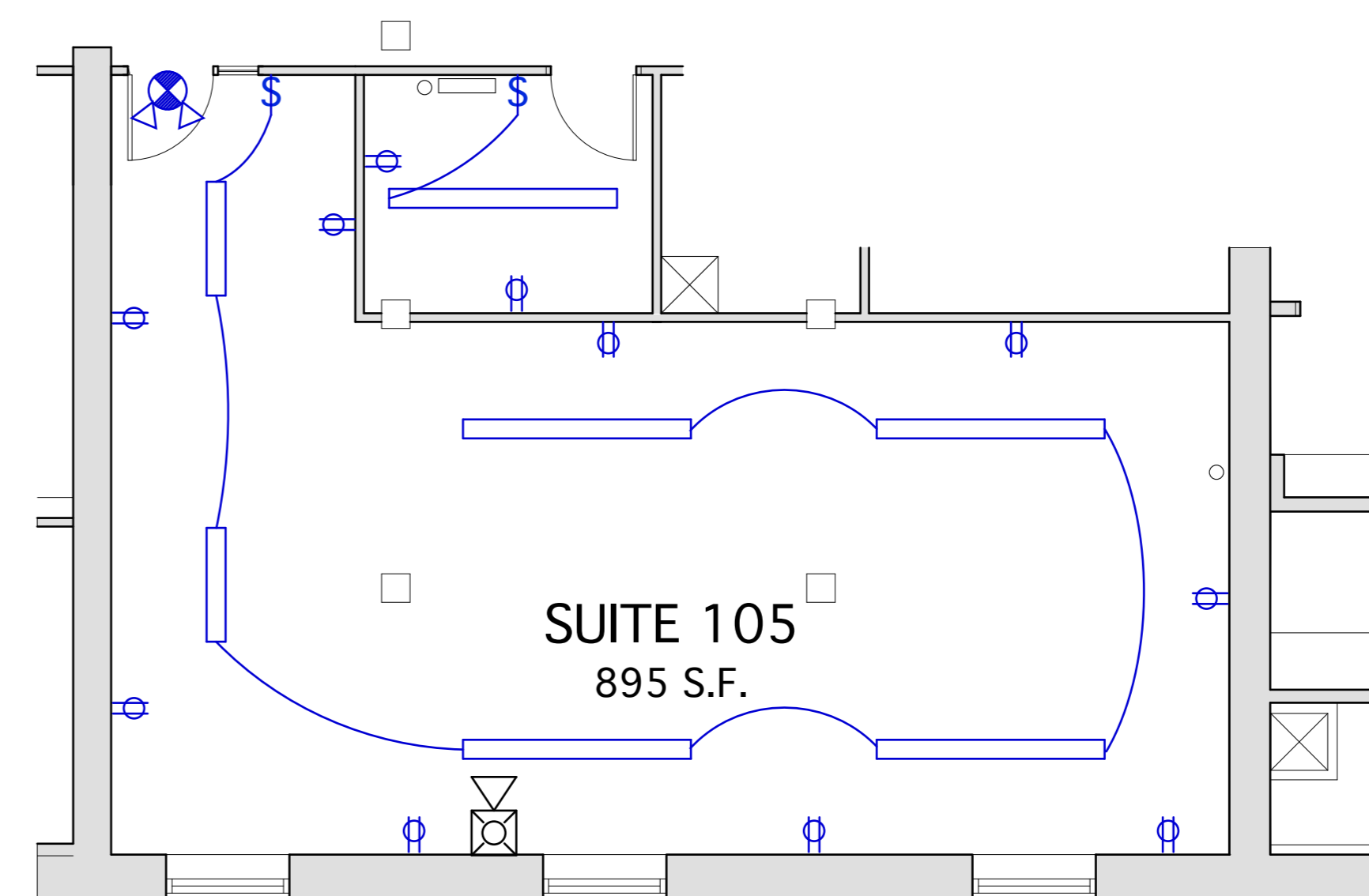


TENANT SPACE PLAN
Scale: 3/16" = 1'-0"

ELECTRICAL LEGEND

	8' fluorescent linear pendant fixture
	4' fluorescent linear pendant fixture
	Existing Fire Alarm Strobe/Horn Unit
	Combination Emergency Light/Exit Sign
	Emergency Light
	Duplex Outlet
	Quadraplex Outlet
	Single Pole Switch
	Three Pole Switch

ELECTRICAL NOTE: All existing exposed armored cable located at exposed ceilings shall be removed and replaced with new wire running in EMT.



TENANT SPACE PLAN
Scale: 3/16" = 1'-0"