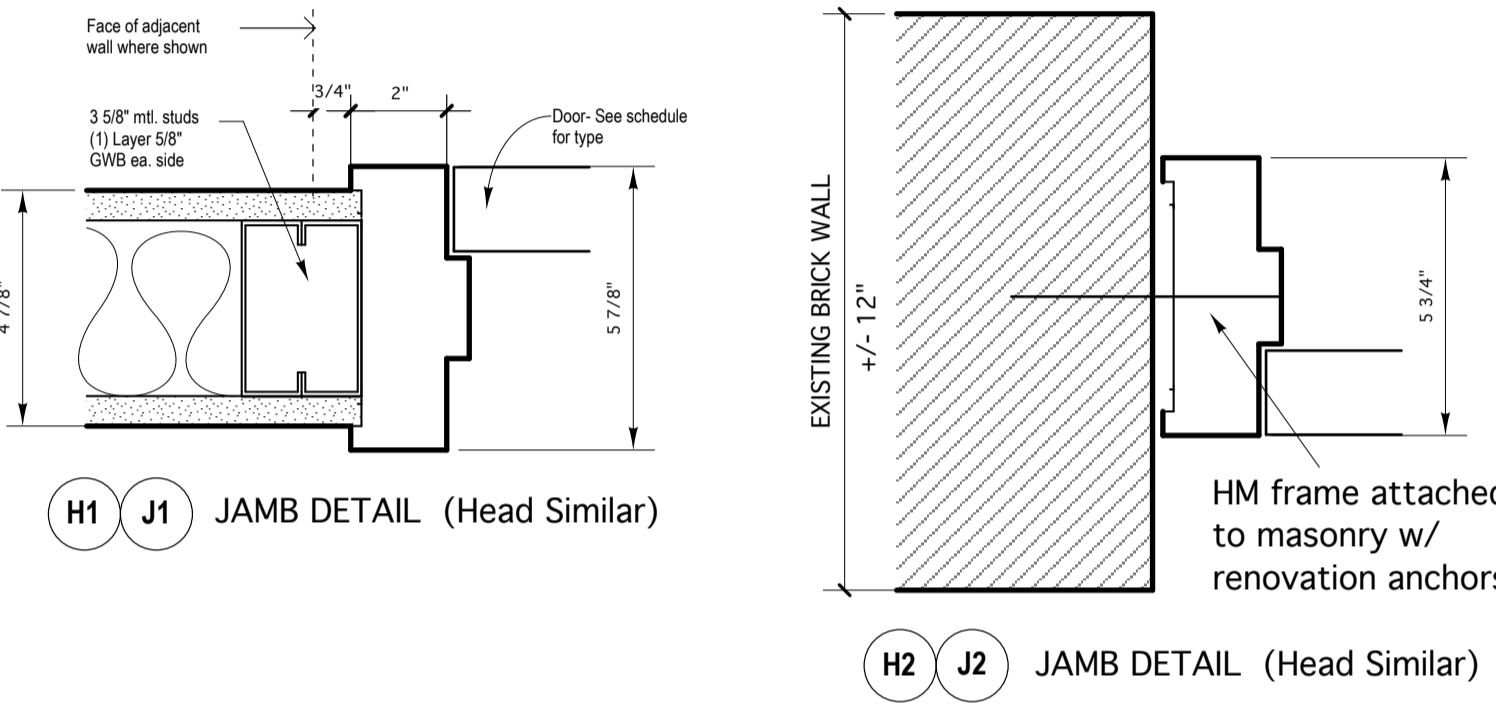


DOOR & FRAME SCHEDULE

General			Door			Frame			Details					Remarks
Door No.	Size (W x H)	Thickness	Material	Finish	Type	Material	Finish	Type	Head	Jamb	Threshold	Hardware	Label	Remarks
SECOND FLOOR														
101	3'-0" X 7'-0"	1 3/4"	SCWD	CLR. F.	A	HM	PNTD.	F1	H1	J1	--	HDWR 2	--	
103	3'-0" X 7'-0"	1 3/4"	SCWD	CLR. F.	Exist'g	HM	PNTD.	Exist'g	Exist'g	Exist'g	--	HDWR 1	90 Min.	
104	3'-0" X 7'-0"	1 3/4"	SCWD	CLR. F.	B	HM	PNTD.	F1	H1	J1	--	HDWR 3	--	
105	3'-0" X 7'-0"	1 3/4"	SCWD	CLR. F.	B	HM	PNTD.	F1	H1	J1	--	HDWR 3	--	
106	3'-6" X 7'-0"	1 3/4"	SCWD	CLR. F.	B	HM	PNTD.	F2	H1	J1	--	HDWR 4	--	
107	3'-0" X 7'-0"	1 3/4"	SCWD	CLR. F.	A	HM	PNTD.	F1	H1	J1	--	HDWR 2	--	
108	3'-6" X 7'-0"	1 3/4"	SCWD	CLR. F.	B	HM	PNTD.	F1	H2	J2	--	HDWR 3	--	
110	3'-0" X 7'-0"	1 3/4"	SCWD	CLR. F.	B	HM	PNTD.	F1	H1	J1	--	HDWR 4	--	
111	3'-6" X 7'-0"	1 3/4"	SCWD	CLR. F.	A	HM	PNTD.	F1	H1	J1	--	HDWR 5	--	

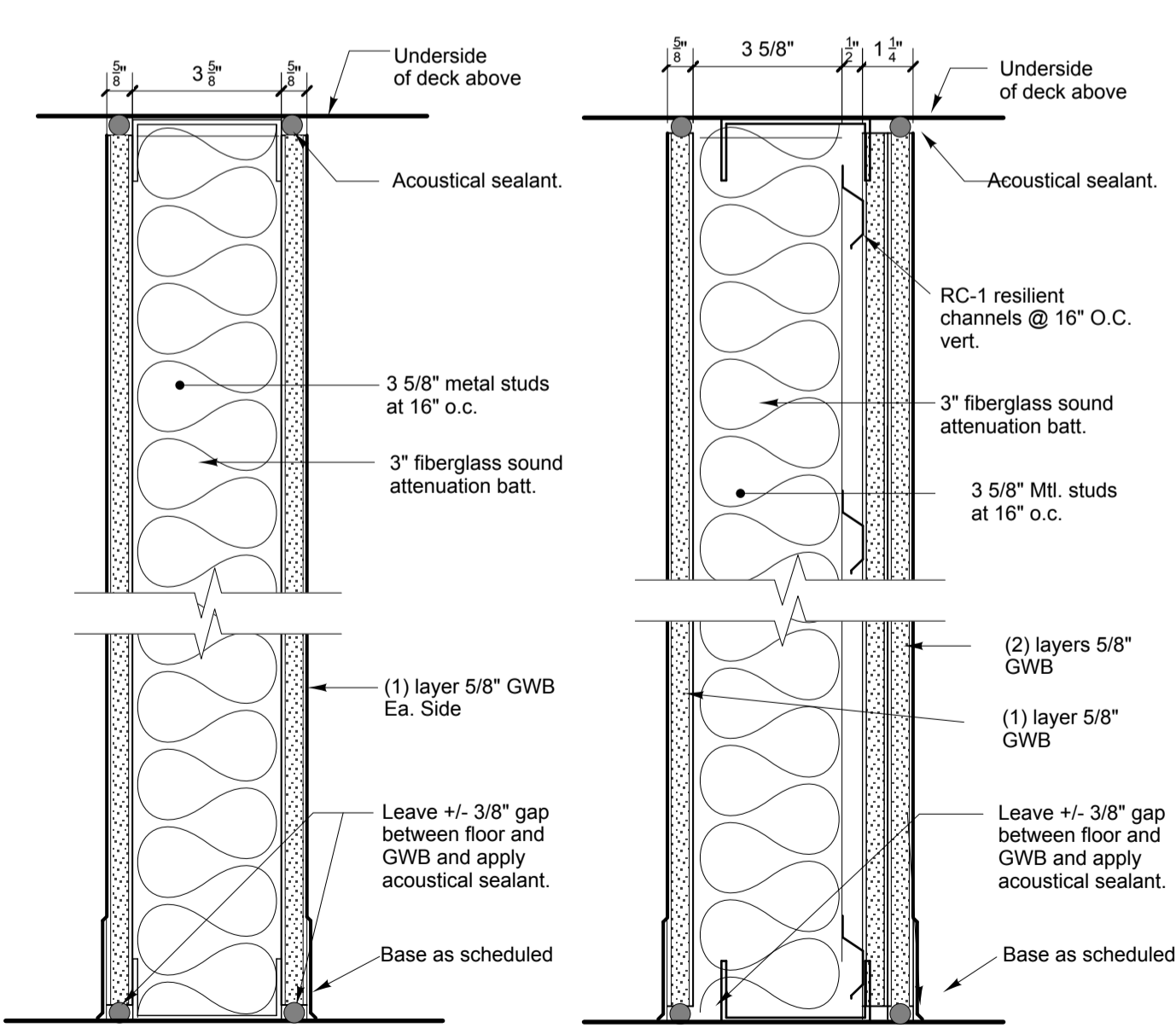
Hardware Sets:
 HDWR 1: Install Closer on existing Rated Door.
 HDWR 2: Hinges, Silencers, Stop, Commercial Duty Lever Lockset - Supply Rm. Function.
 HDWR 3: Hinges, Silencers, Stop, Commercial Duty Lever Lockset - Office Function.
 HDWR 4: Hinges, Closer, Silencers, Stop, Commercial Duty Lever Lockset - Entry Function.
 HDWR 5: Hinges, Closer, Silencers, Stop, Commercial Duty Lever Lockset - Passage Function, Electro-Magnetic Hold Open - tied to Fire alarm System.

ABBREVIATIONS
 ALUM Aluminum
 SCWD Solid Core wood door
 CLR. F. Clear Finish
 HM Hollow Metal
 GHM Galvanized Hollow Mtl.
 PNTD. Painted
 F.F. Factory Finish
 HW Hardware Set
 TG Tempered Glass



LAYOUT PLAN

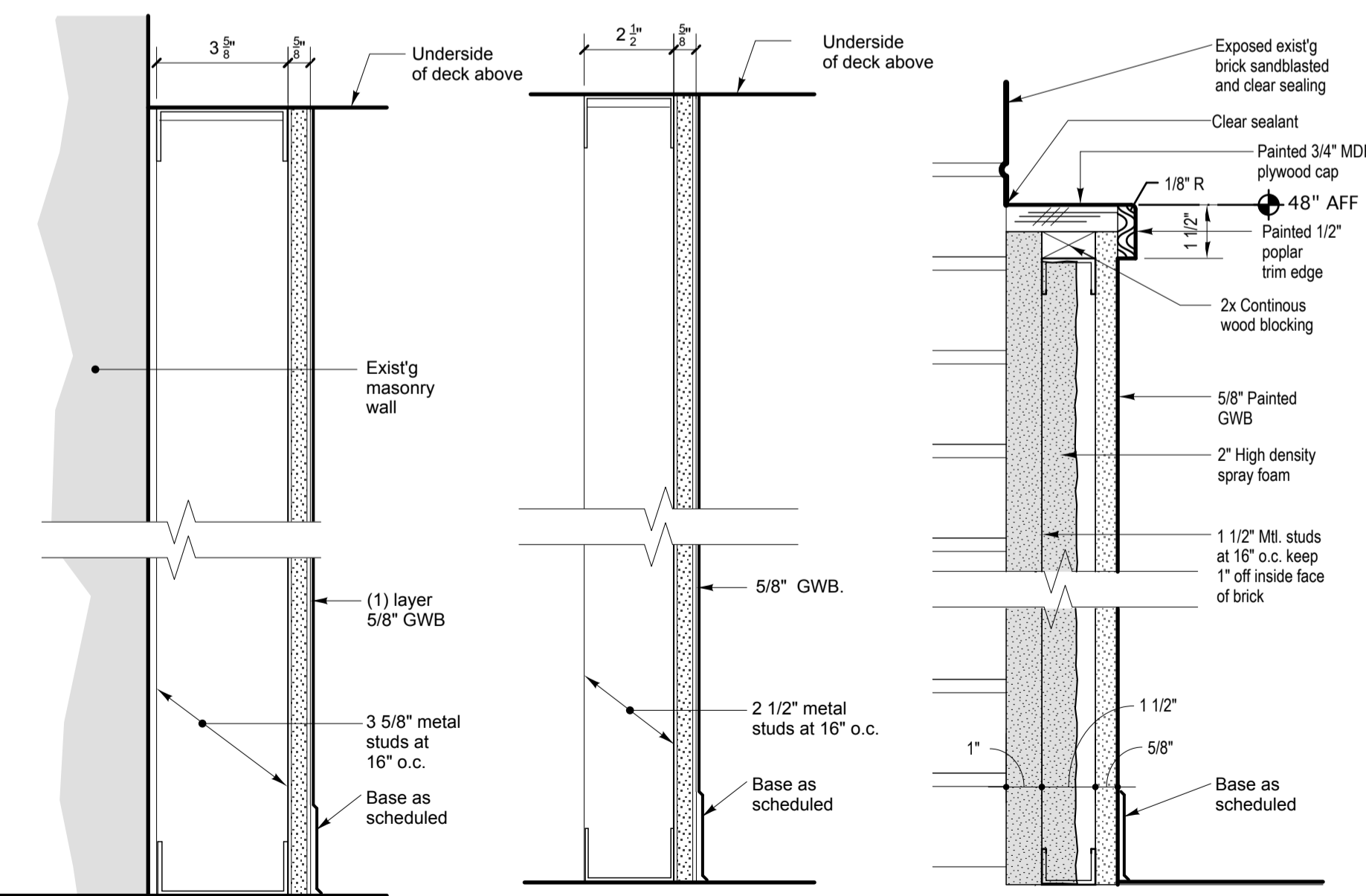
1/8" = 1'-0"



1 Typical Interior Partition As Shown
2 Typical Demising Partition As Shown
2A (2) layers of 5/8" GWB over RC-1 resilient channels over exist'g studs

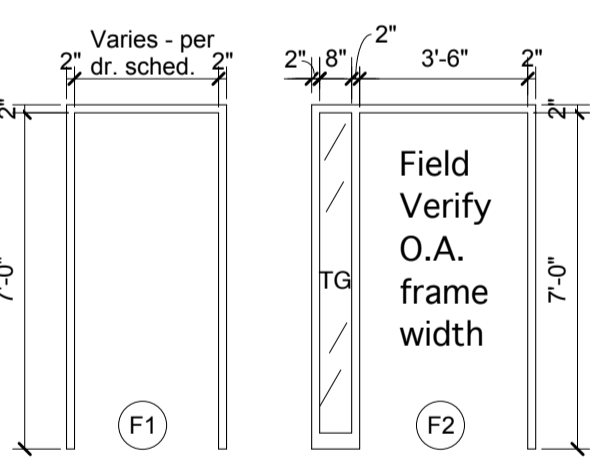
DOORS & FRAMES

1/4" = 1'-0"

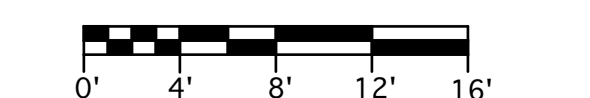
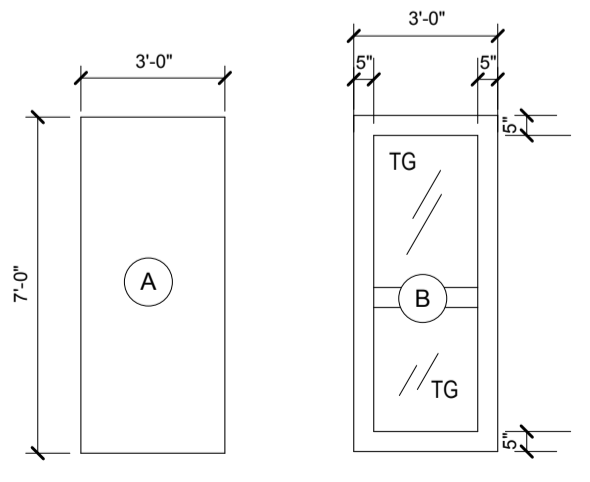


3 Typical Partition at Existing Masonry As Shown
4 Typical Partition at Pipe Enclosure As Shown
5 Typical Exterior Wall Partition As Shown

FRAME TYPES



DOOR TYPES



WSA
 WINTON SCOTT ARCHITECTS
 5 Milk Street
 Portland, Maine 04101
 207 774 4811
 www.wintonscott.com



RICOH OFFICES
 Tenant Fit Up
 Merrill's Wharf
 Portland, Maine

REVISIONS

PERMIT DOCUMENTS
 JULY 31, 2013

Layout Plan +
 Partition Types + Doors

Scale: As Noted

A 101